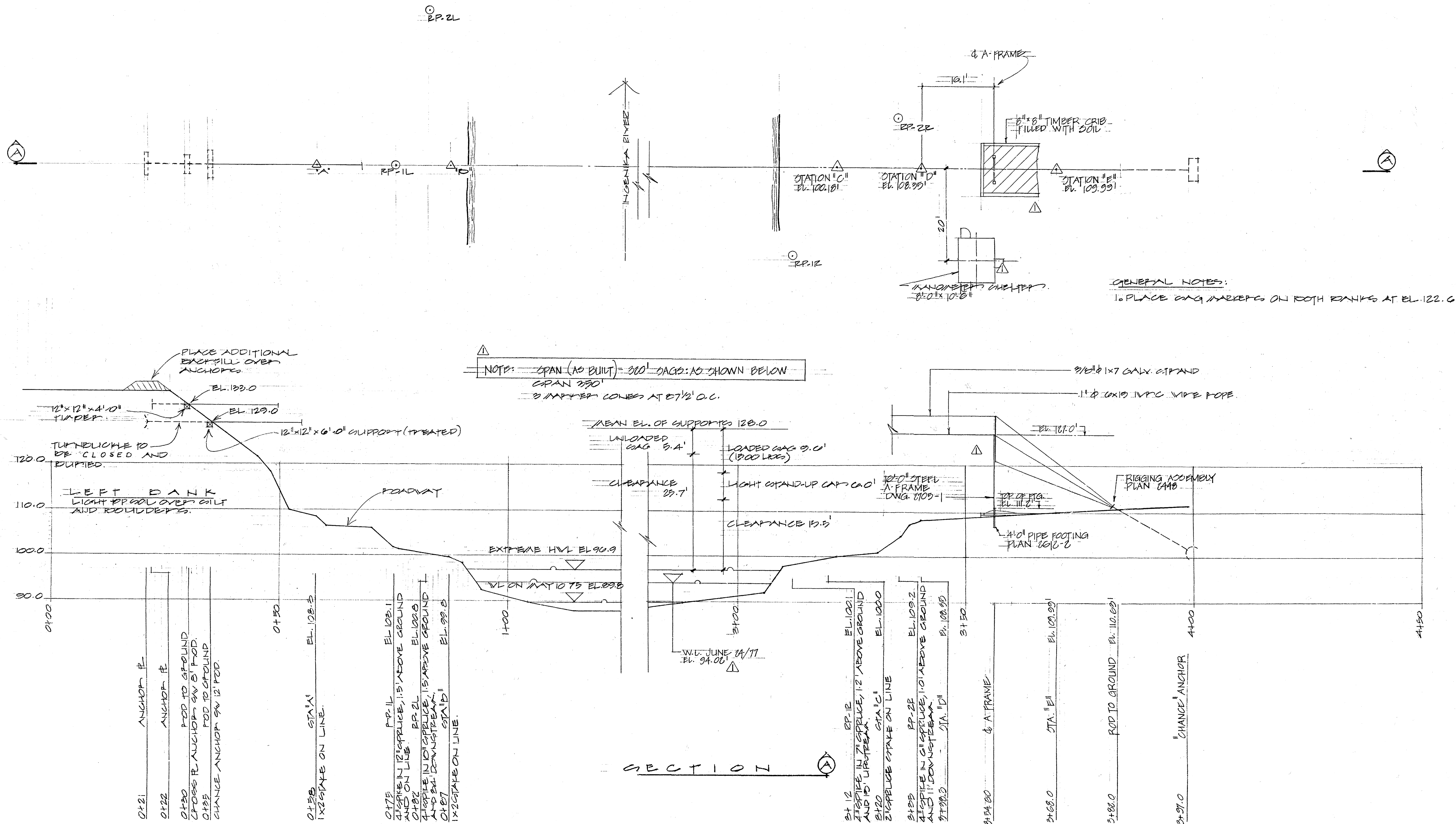


INGENIKA RIVER ABOVE SWANNEL RIVER
CABLEWAY - AS BUILT



NOTE: SPAN (AS BUILT) = 300' SAGS: AS SHOWN BELOW
SPAN 290'
3 MARKER CONES AT 57 1/2' O.C.

GENERAL NOTES:
1. PLACE GANG MARKERS ON BOTH BANKS AT EL. 122.0

SECTION I

Dwg. No.	Title	Dwg. No.	Title	No.	Remarks	By	Date	Chk'd.	App.	Drawing	Tracing	By	Date	Checked	Date	Approved	Date	DEPT. OF THE ENVIRONMENT WATER SURVEY OF CANADA, VANCOUVER, B.C.	FIELD BOOK 756
		2448	RIGGING ASSEMBLY																Scale 1"=10'-0"
		2442-2	PIPE FOOTING							Survey		LEP	10/76						Sheet 1 of 2
		2705-1	10' STEEL A-FRAME							Design		ASP	10/76						Station No.
												ASP	10/76	ZW	11/12/76		June 7/76		
																			Dwg. No. 2804-1
REFERENCE		REFERENCE		REVISIONS															
				REVISIONS: 1. REVISED TO AS BUILT (SHELTER & CABLES) ALLEN JULY 7 1977 2. SPAN (AS BUILT) = 300'															
INGENIKA RIVER ABOVE SWANNEL RIVER HYDROMETRIC STATION CABLEWAY (AS BUILT)																			