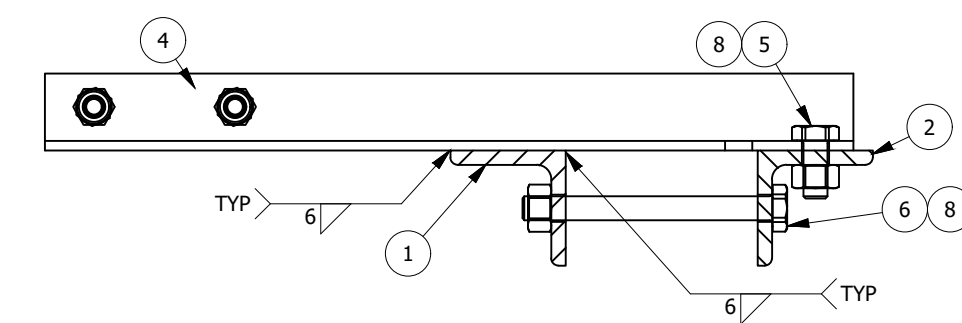
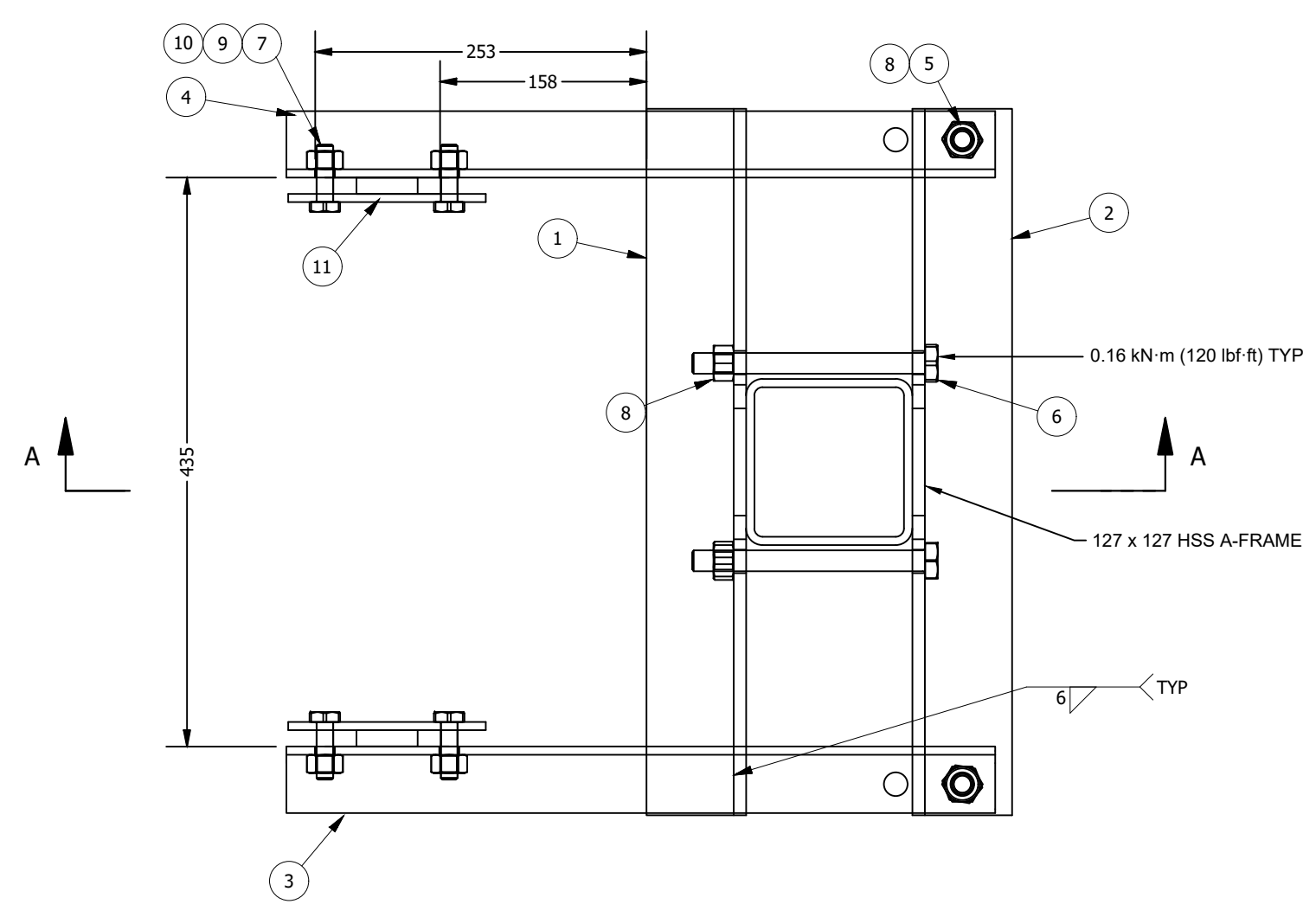
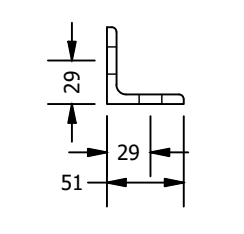
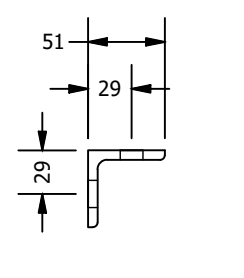
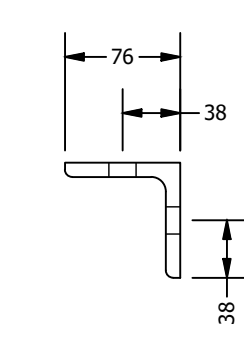
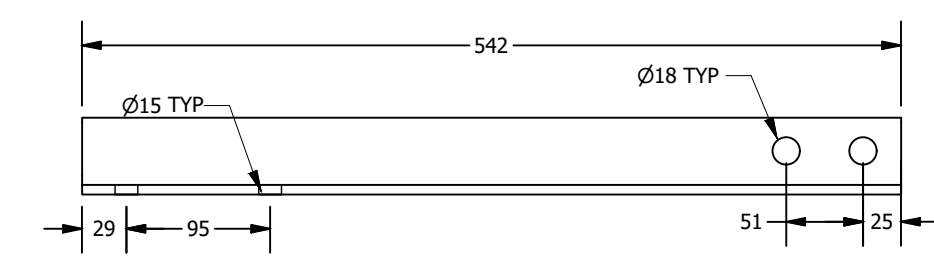
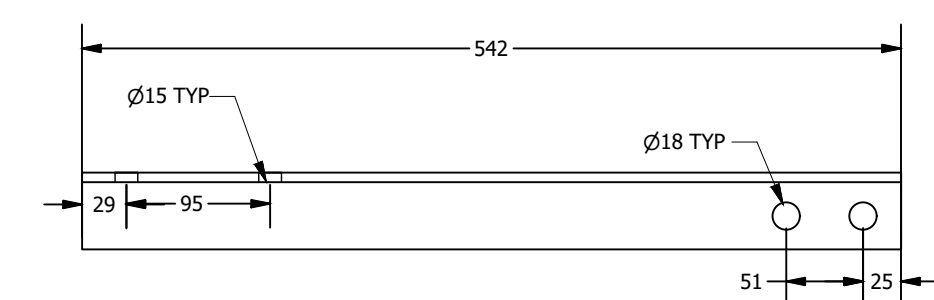
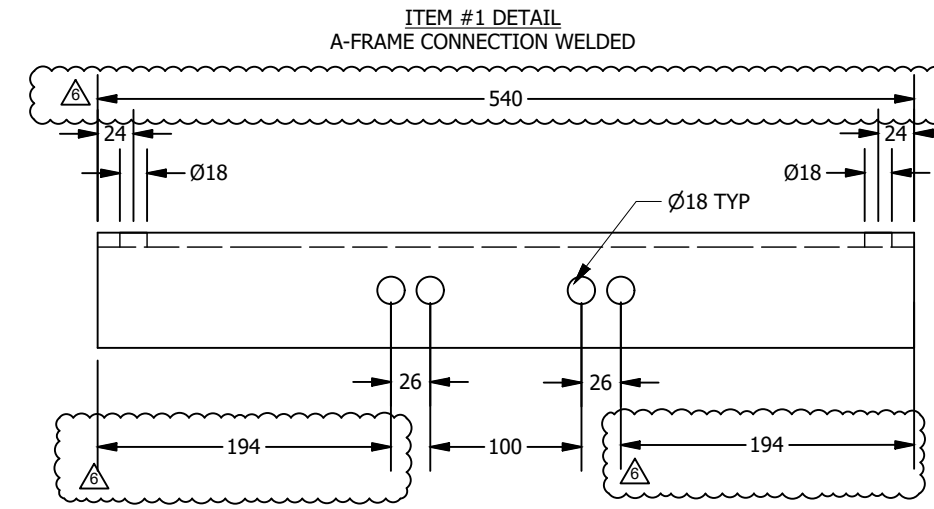
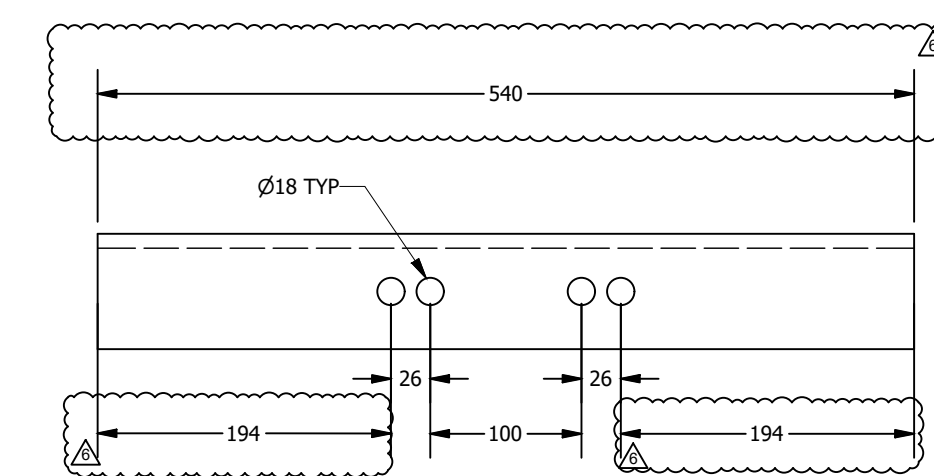
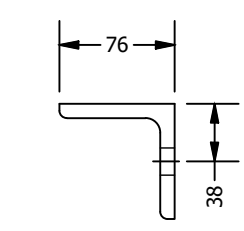


FOR BIDDING PURPOSES

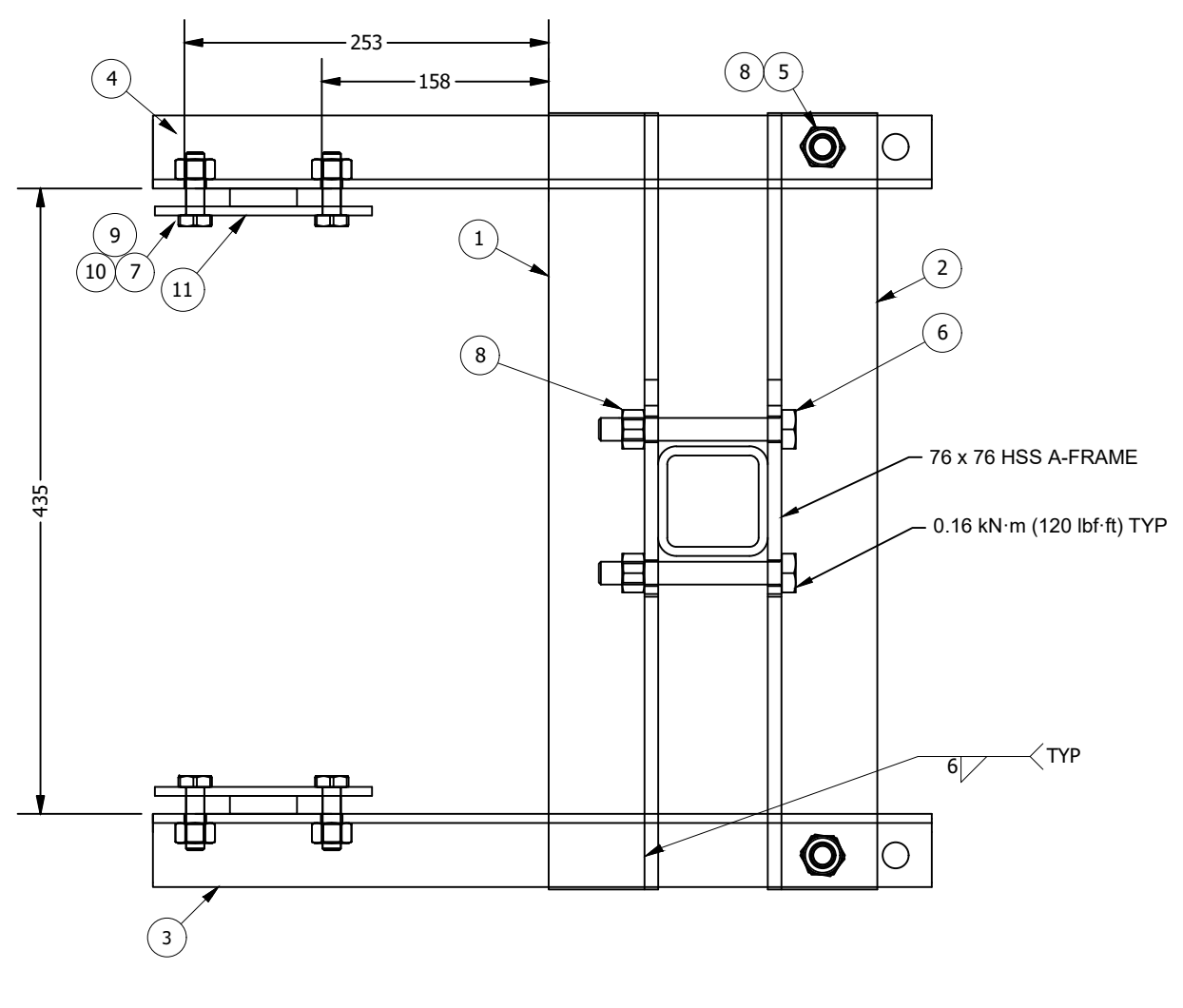


SECTION A-A  
A-FRAME HSS OMITTED FOR CLARITY

ASSEMBLY ALLOWS FOR ONE ASSEMBLY FOR THE TWO DIFFERENT SIZES OF HSS CONNECTION. ONLY DIFFERENCE IS THE LENGTH OF THE CLAMPING BOLTS.



LADDER BRACKET HEAVY DUTY (HD)  
COMPATIBLE WITH 127 x 127 HSS



LADDER BRACKET LIGHT DUTY (LD)  
COMPATIBLE WITH 76 x 76 HSS

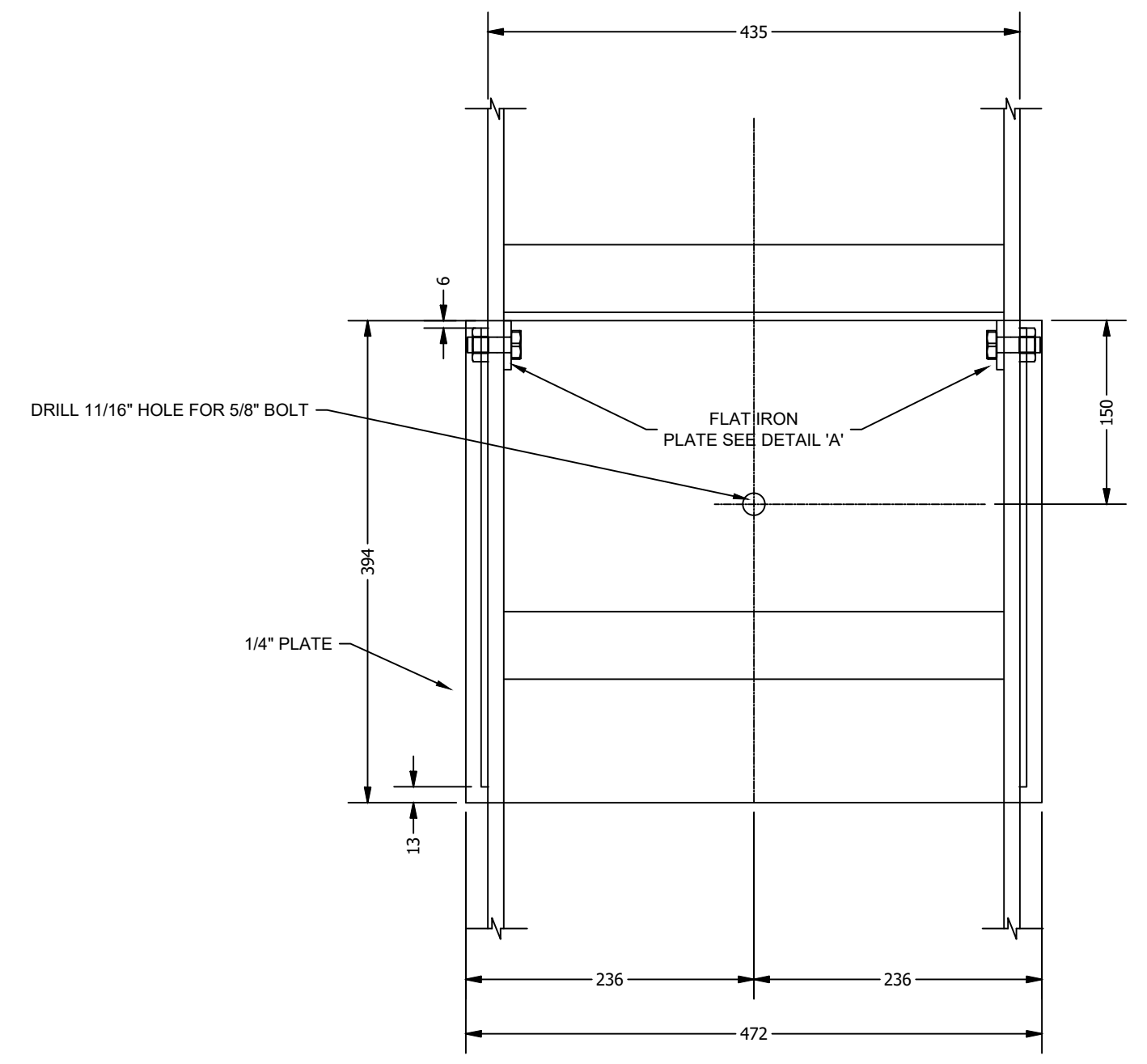
HD LADDER BRACKET BILL OF MATERIALS

ITEM	QTY	DESCRIPTION	SIZE	LENGTH	MATERIAL	FINISH	DWG#
1	1	A-FRAME WELDED	ANGLE - 3" x 3" x 3/8"	540	CSA G40.21 350W	GALVANIZED	
2	1	A-FRAME BOLTED	ANGLE - 3" x 3" x 3/8"	540	CSA G40.21 350W	GALVANIZED	
3	1	LADDER MOUNT ANGLE LEFT	ANGLE - 2" x 2" x 1/4"	542	CSA G40.21 350W	GALVANIZED	
4	1	LADDER MOUNT ANGLE RIGHT	ANGLE - 2" x 2" x 1/4"	542	CSA G40.21 350W	GALVANIZED	
5	2	HEX BOLT	5/8"	1-1/2"	ASTM A325	GALVANIZED	
6	2	HEX BOLT	5/8"	3"	ASTM A325	GALVANIZED	
7	4	HEX BOLT	1/2"	1-1/2"	ASTM A325	GALVANIZED	
8	4	HEX NUT	5/8"		ASTM A325	GALVANIZED	
9	4	LOCK WASHER	1/2"		ASTM A325	GALVANIZED	
10	4	HEX NUT	1/2"		ASTM A325	GALVANIZED	
11	2	FLAT BAR - SEE DETAIL "A"	FB 1-1/2" x 1/4"	151	CSA G40.21 300W	GALVANIZED	

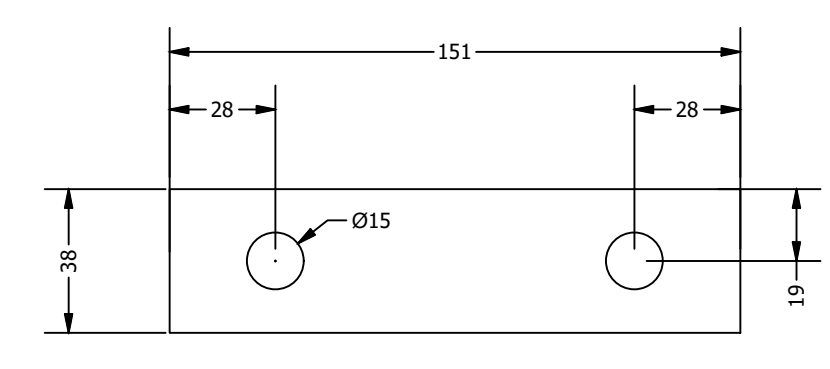
LD LADDER BRACKET BILL OF MATERIALS

ITEM	QTY	DESCRIPTION	SIZE	LENGTH	MATERIAL	FINISH	DWG#
1	1	A-FRAME WELDED	ANGLE - 3" x 3" x 3/8"	540	CSA G40.21 350W	GALVANIZED	
2	1	A-FRAME BOLTED	ANGLE - 3" x 3" x 3/8"	540	CSA G40.21 350W	GALVANIZED	
3	1	LADDER MOUNT ANGLE LEFT	ANGLE - 2" x 2" x 1/4"	542	CSA G40.21 350W	GALVANIZED	
4	1	LADDER MOUNT ANGLE RIGHT	ANGLE - 2" x 2" x 1/4"	542	CSA G40.21 350W	GALVANIZED	
5	2	HEX BOLT	5/8"	1-1/2"	ASTM A325	GALVANIZED	
6	2	HEX BOLT	5/8"	3"	ASTM A325	GALVANIZED	
7	4	HEX BOLT	1/2"	1-1/2"	ASTM A325	GALVANIZED	
8	4	HEX NUT	5/8"		ASTM A325	GALVANIZED	
9	4	LOCK WASHER	1/2"		ASTM A325	GALVANIZED	
10	4	HEX NUT	1/2"		ASTM A325	GALVANIZED	
11	2	FLAT BAR - SEE DETAIL "A"	FB 1-1/2" x 1/4"	151	CSA G40.21 300W	GALVANIZED	

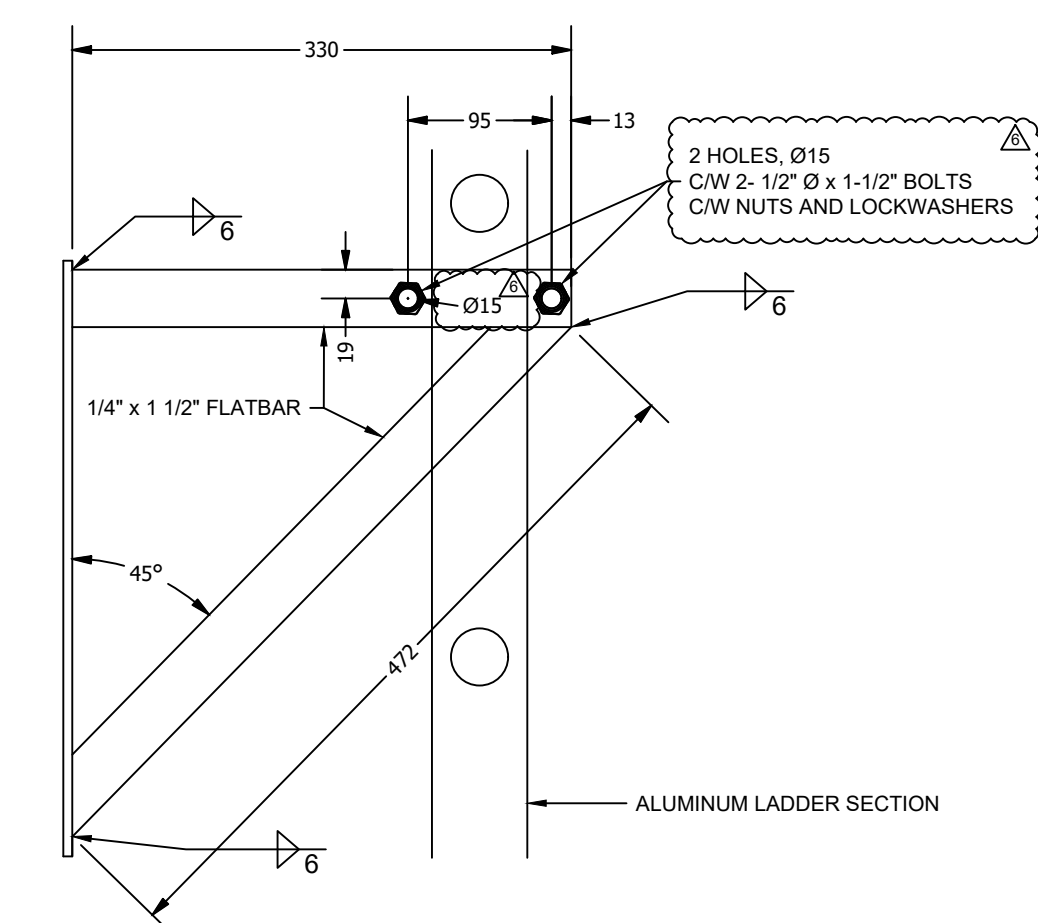
GENERAL NOTES  
 1. FABRICATE AND ERECT STRUCTURAL STEEL TO CAN/CSA S16 LIMIT STATES DESIGN OF STEEL STRUCTURES.  
 2. WELDING TO CONFORM TO CSA W-58 BY FABRICATORS CERTIFIED BY CANADIAN WELDING BUREAU (CWB) TO THE REQUIREMENTS OF CSA W47.1 DIVISION 1 OR 2. L WELDS SHALL BE MADE WITH ELECTRODES AND FILLER MATERIAL RATED E60XX (E70XX) OR BETTER, UNLESS NOTED OTHERWISE.  
 3. ALL MATERIALS USED IN FABRICATION SHALL BE NEW, ACCOMPANIED BY MILL CERTIFICATES.  
 4. ALL EDGES SHOULD BE SMOOTH AND FREE FROM BURRS.  
 5. COMPLETE ASSEMBLIES SHALL BE HOT DIPPED GALVANIZED AS PER ASTM A123/A123M.



FRONT ELEVATION  
PIPE 'A' FRAME LADDER BRACKET



DETAIL 'A'



SIDE ELEVATION  
PIPE 'A' FRAME LADDER BRACKET

PIPE 'A' FRAME LADDER BRACKET BILL OF MATERIALS

ITEM	QTY	DESCRIPTION	SIZE	LENGTH	MATERIAL	FINISH
1	1	PIPE 'A' FRAME LADDER BRACKET	FB 1-1/2" x 1/4"	151	GSA G40.21 350W	GALVANIZED
2	2	DETAIL 'A'	FB 1-1/2" x 1/4"	151	GSA G40.21 300W	GALVANIZED
3	4	HEX BOLT	1/2"	1-1/2"	ASTM A325	GALVANIZED
4	4	HEX NUT	1/2"		ASTM A325	GALVANIZED
5	4	LOCK WASHER	1/2"		ASTM A325	GALVANIZED
6	1	HEX BOLT	5/8"	6"	ASTM A325	GALVANIZED
7	1	HEX NUT	5/8"		ASTM A325	GALVANIZED
8	1	LOCK WASHER	5/8"		ASTM A325	GALVANIZED

Revision	Description	Date
0	ISSUED FOR CONSTRUCTION	2020-02-09

LADDER BRACKET DETAILS

Location: \_\_\_\_\_ Employment: \_\_\_\_\_  
 VARIOUS

Designed by: ECCC  
 Drawn by: ECCC  
 Approved by: ECCC  
 ECCC Project Manager: \_\_\_\_\_  
 Drawing title: \_\_\_\_\_

LADDER BRACKET DETAILS