

DESIGN

0. Design to conform with supplied project documentation. These shop drawings are to be executed by Skyhigh Ladders and Guardrails only.
1. Designed in accordance with ANSI A14.3 2018, WorkSafeBC regulations & the BC Building Code 2018.
 2. Intended for interior and exterior landings less than 10 m above adjacent ground level for access ways to equipment platforms and similar areas where the gathering of many people is improbable.
 3. Intended for industrial areas where children are not to be present.

DESIGN LOADS

1. Ladder:
 - Live Load: 2 workers 1.1kn ea. (250lbs ea.)
 - Dead Load: Self Weight

PRODUCT

1. ALUMINUM: The design and fabrication of all aluminum components shall be in accordance to CAS S157-05 "Strength Design in Aluminum"

- Aluminum Flat Bar: 6061 - T6, Fu= 260MPa, Fy=240MPa, Fwy=110MPa
- Aluminum Round Bar: 6061 - T6 Fu= 260MPa Fy=240MPa Fwy=110MPa

WELDING

- Aluminum
1. Mig weld to CSA W59 by fabricator qualified to CSA W47.2 Div. 2.
 2. Welding design and practice to conform to the requirements of CSA S244.
 3. Welding electrode shall not be less than ultimate strength of 6061-T6 aluminum.

EXECUTION

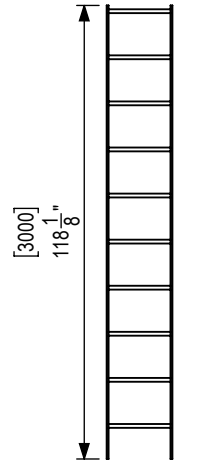
1. Break all sharp edges.
2. Weld all shop connections with a cont. 3/16" (5mm) fillet weld U.N.O. exposed fillet welds to be smooth; butt welds to be ground flush.

INSPECTION

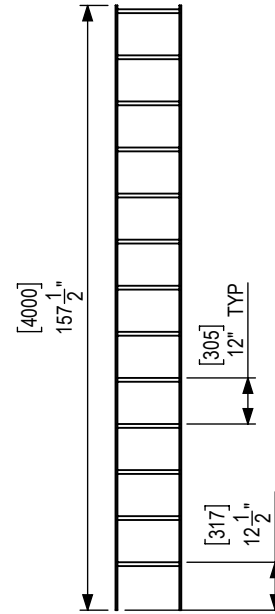
1. Fixed access ladder installations must be periodically inspected by a competent person for rust, corrosion and structural integrity, and must be maintained in a good condition not likely to endanger any worker. These inspections should be conducted at least once per year.
2. Records of inspections and maintenance to fixed access ladder systems should be maintained.
3. For further information on inspection, test & maintenance refer to ANSI A14.3.2018
4. It is the responsibility of the client to check and verify all dimensions prior to releasing fabrication approval.

SCHEDULE OF MATERIALS

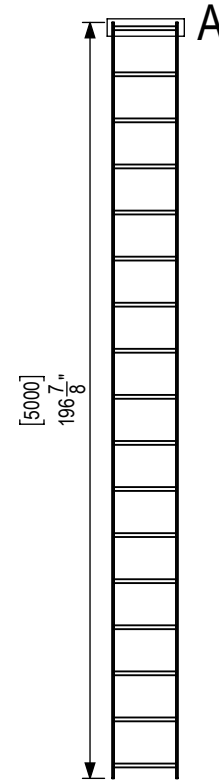
SIDERAILS: PL 1/2 x 3
RUNGS: Ø 1" SOLID ROUND



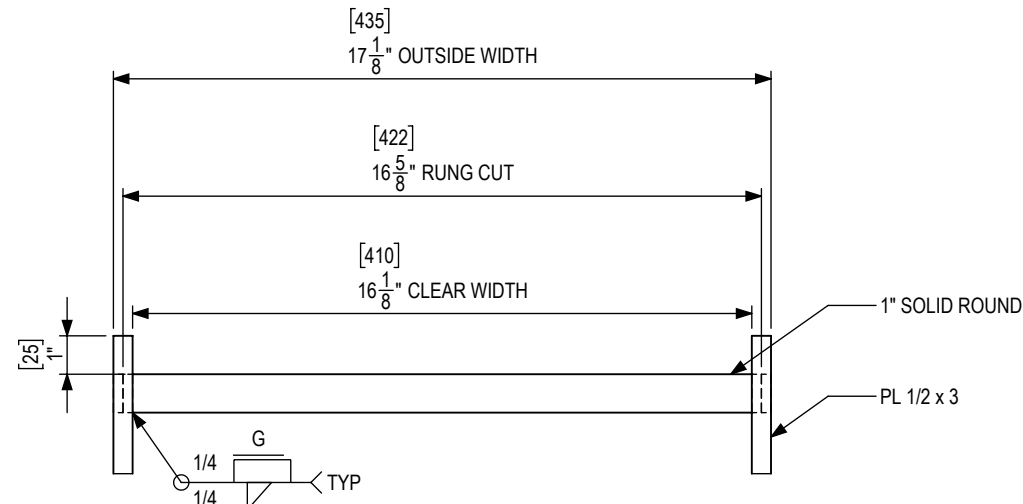
3m LENGTH
N=7+5
SCALE 1 : 50



4m LENGTH
N=5+1
SCALE 1 : 50



5m LENGTH
N=5+1
SCALE 1 : 50



DETAIL A
TYP ALL LADDERS
SCALE 1 : 5



#6 - 9520 192nd St
Surrey, BC, V4N 3R9
604-474-4060
www.SkyHighLadders.com

© Copyright Reserved. This plan and design is and at all times remains the exclusive property of SkyHigh Ladders & Guardrails Inc. and in no part herein shall be used, except for the specific project, without the written consent of SkyHigh Ladders & Guardrails Inc.

This document does not, neither in whole nor in part, constitute any direction or instruction to any contractor with regard to construction means methods or techniques. All dimensions on the project must be checked by the contractor.

DATE	ISSUED FOR	R
2021-03-10	Review	R0
2021-03-24	Review	R1

Drawn By: MS

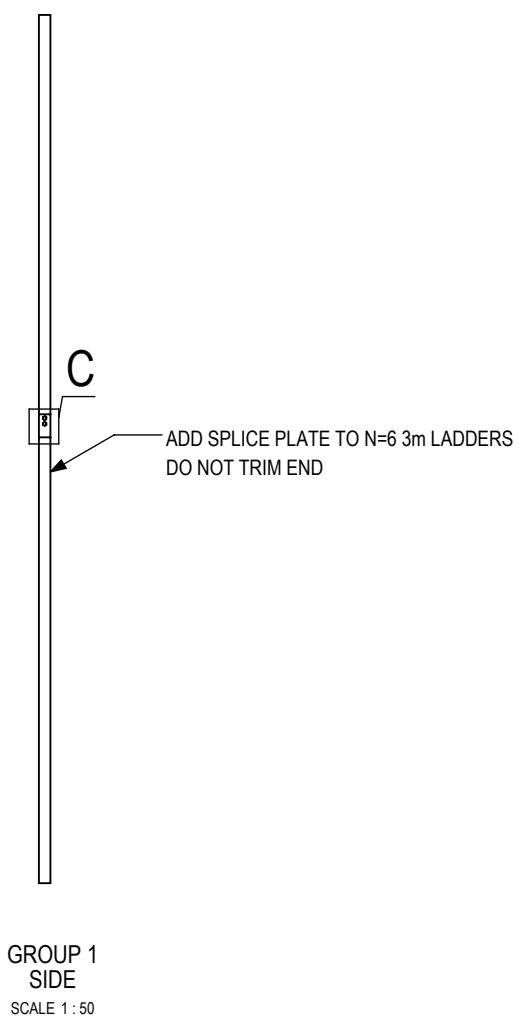
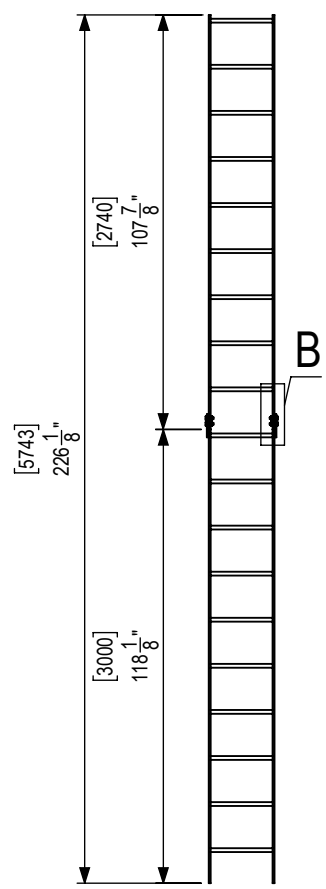
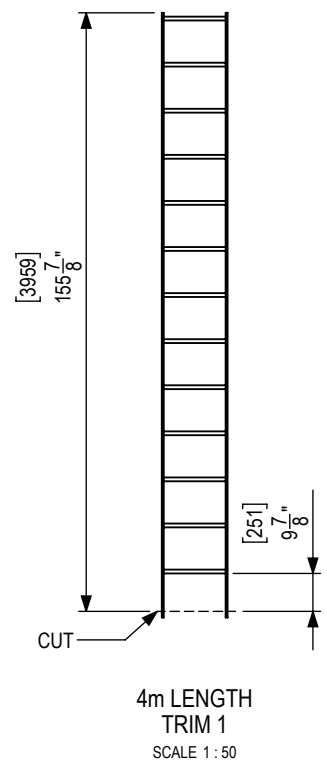
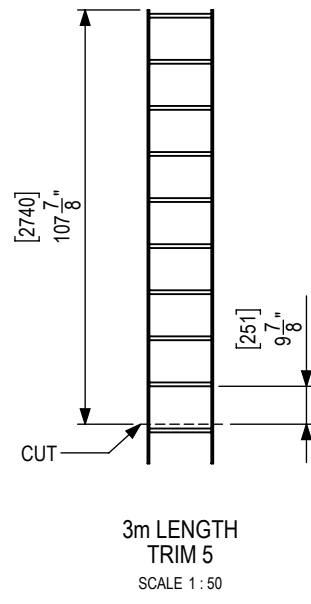
Standard Alum Ladders

PROJECT
Various NHS Cableway Projects

CLIENT
Environment and Climate Change
Canada
201 - 401 Burrard St
Vancouver, BC. V6C 3R2

Materials:	Alum 6061-T6
Finishing:	None
Quantity:	See Enclosed
Scope:	Supply Only
Project #:	6961,6991

AS-BUILT



THIS PAGE INDICATES REQUIRED MODIFICATIONS TO SPLICED LADDERS.

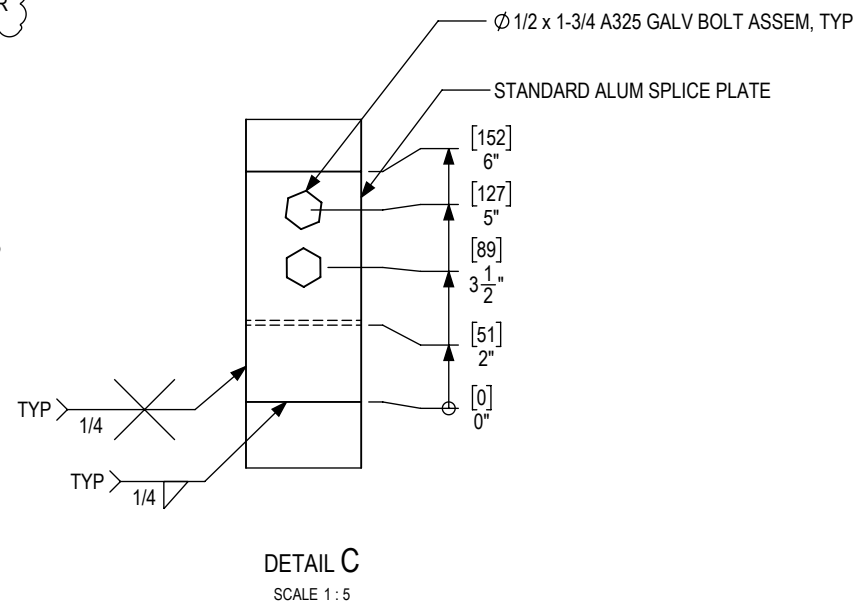
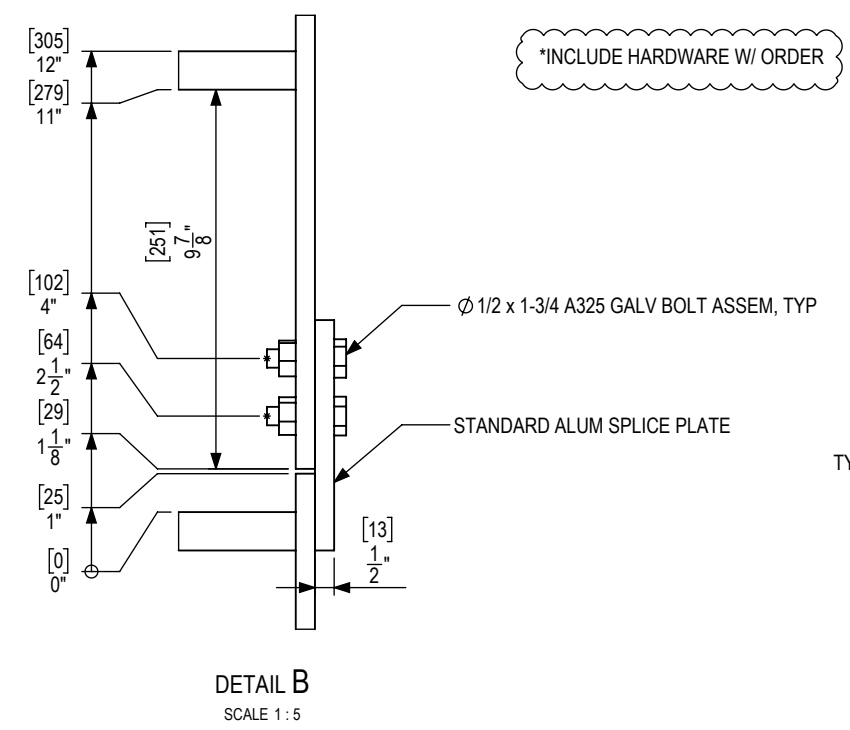
LADDERS THAT ARE NOT INCLUDED IN THE SPLICE SCHEDULE MAY REMAIN AT 3m, 4m, 5m RESPECTIVELY. (DO NOT ALTER IF NOT SPLICED.)

GROUP 1-6 UPPER LADDERS TO RECEIVE END TRIM AND BOLT HOLES AT BOTTOM.
GROUP 1-6 LOWER LADDERS TO RECEIVE STANDARD ALUM SPLICE PLATE AT TOP.

- QTY SCHEDULE:
- 6961-
3m: N=7 (SPLICE 3+3)
4m: N=5 (NOT MODIFIED)
5m: N=5 (NOT MODIFIED)
 - 6991-
3m: N=5 (SPLICE 3+2)
4m: N=1 (SPLICE 1)
5m: N=1 (NOT MODIFIED)

- SPLICE SCHEDULE:
- 6961-
GROUP 1: 3m + 3m
GROUP 2: 3m + 3m
GROUP 3: 3m + 3m
 - 6991-
GROUP 4: 3m + 3m
GROUP 5: 3m + 3m
GROUP 6: 3m + 4m

ONE SPLICE PER GROUP.



SKY HIGH
LADDERS & GUARDRAILS Inc.

#6 - 9520 192nd St
Surrey, BC, V4N 3R9
604-474-4060
www.SkyHighLadders.com

© Copyright Reserved. This plan and design is and at all times remains the exclusive property of SkyHigh Ladders & Guardrails Inc. and in no part herein shall be used, except for the specific project, without the written consent of SkyHigh Ladders & Guardrails Inc.

This document does not, neither in whole nor in part, constitute any direction or instruction to any contractor with regard to construction means methods or techniques. All dimensions on the project must be checked by the contractor.

DATE	ISSUED FOR	R
2021-03-10	Review	R0
2021-03-24	Review	R1

Drawn By: MS

Standard Alum Ladders

PROJECT
Various NHS Cableway Projects

CLIENT
Environment and Climate Change
Canada
201 - 401 Burrard St
Vancouver, BC. V6C 3R2

Materials:	Alum 6061-T6
Finishing:	None
Quantity:	See Enclosed
Scope:	Supply Only
Project #:	6961,6991

MODIFY