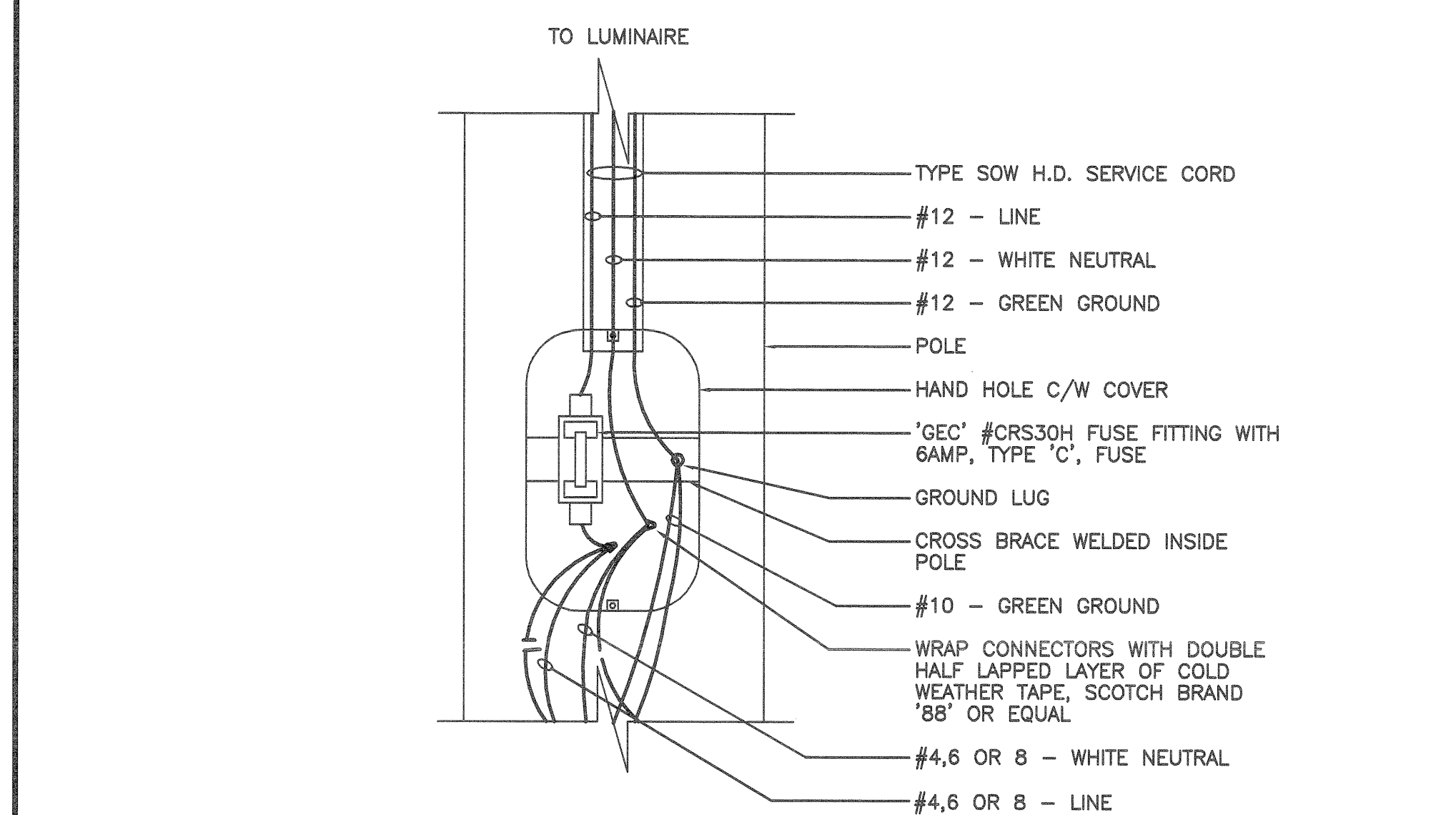


TYPICAL TYPE 'A' & 'B' LIGHT FIXTURE DETAILS

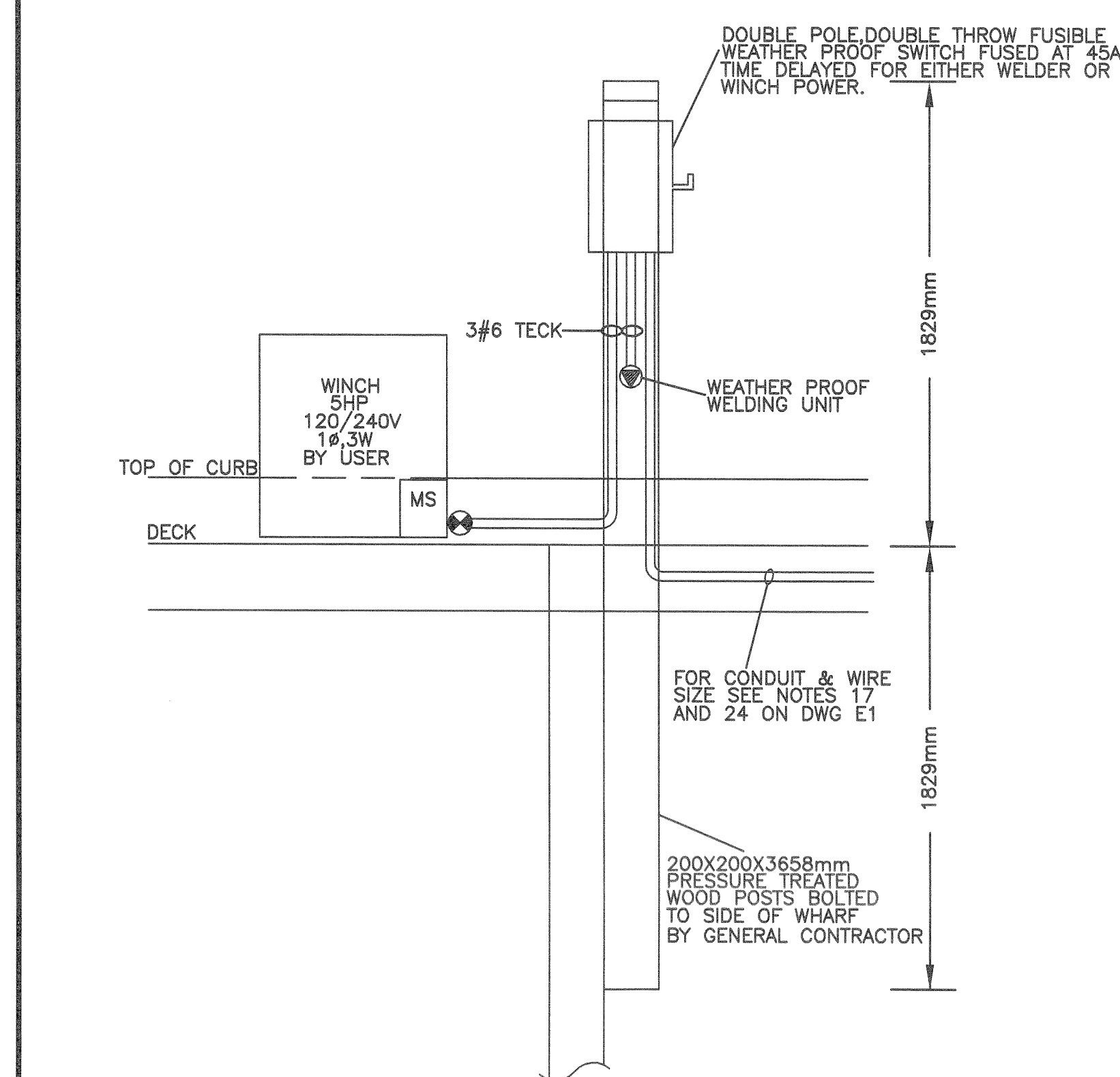
METERS & PANEL 'A' & 'B' c/w DISTRIBUTION
IN ELECTRICAL POWER CENTER

SCALE : N.T.S.

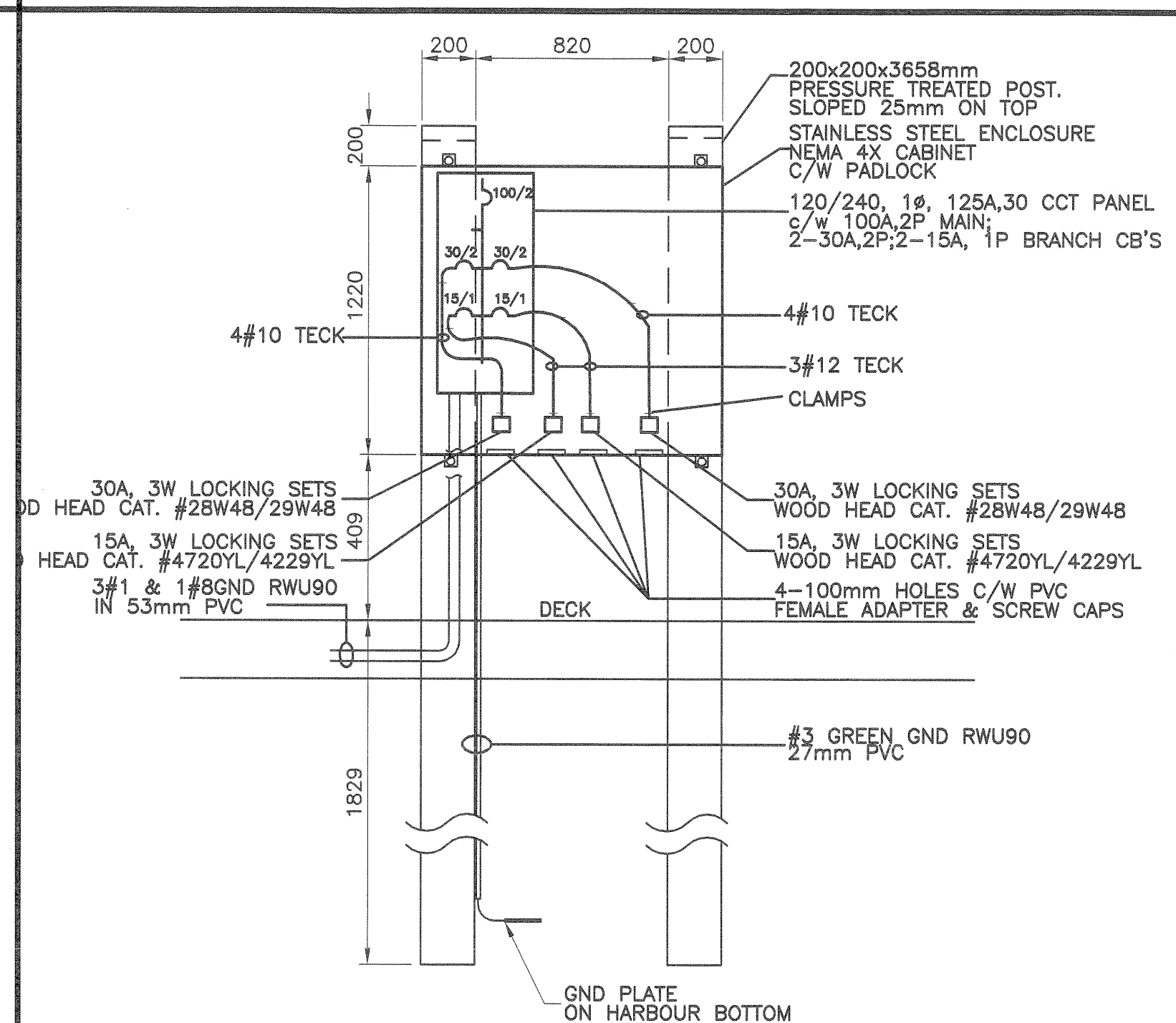


HAND HOLE DETAIL

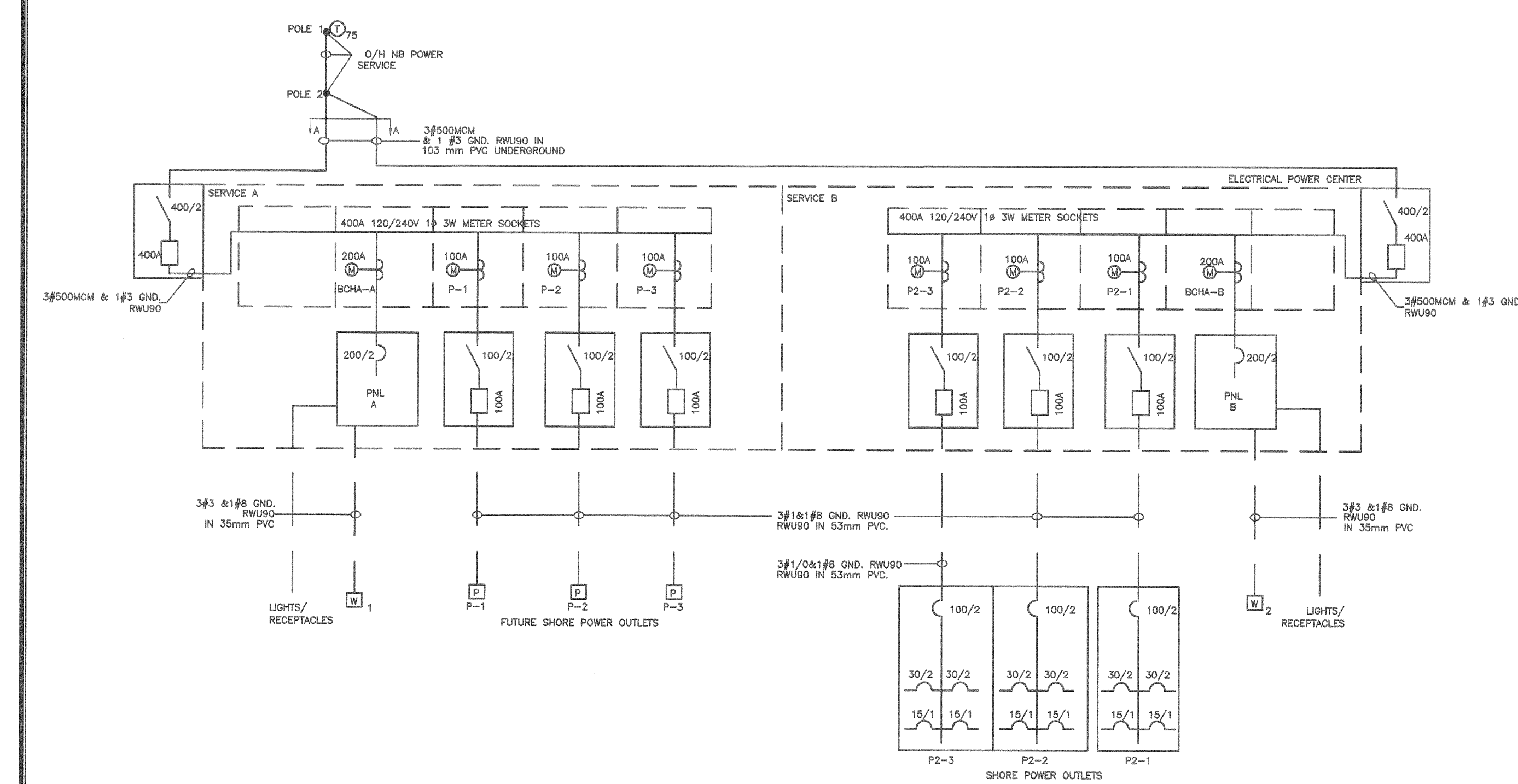
SCALE : N.T.S.



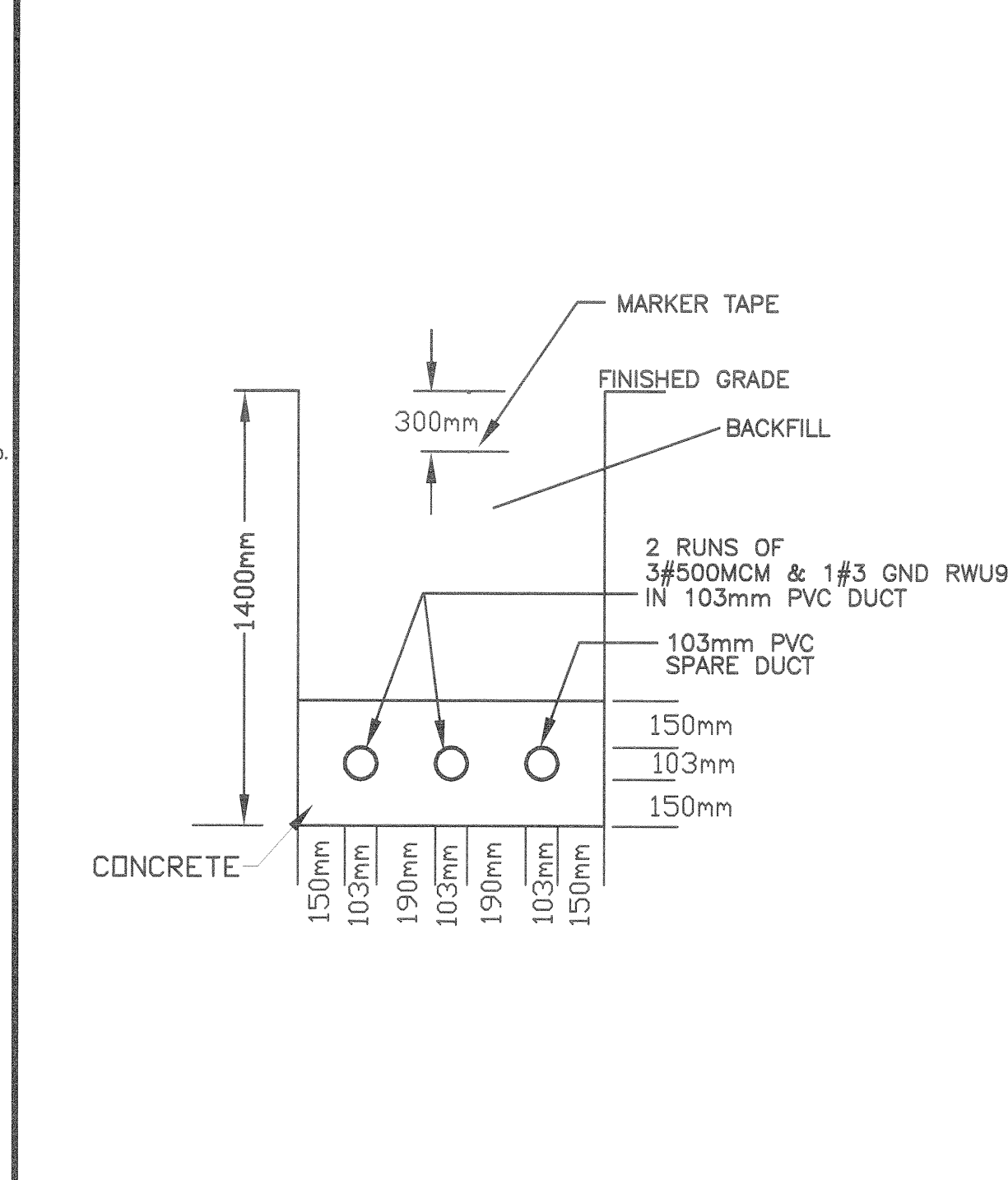
WHINCH/WELDER POWER DETAIL



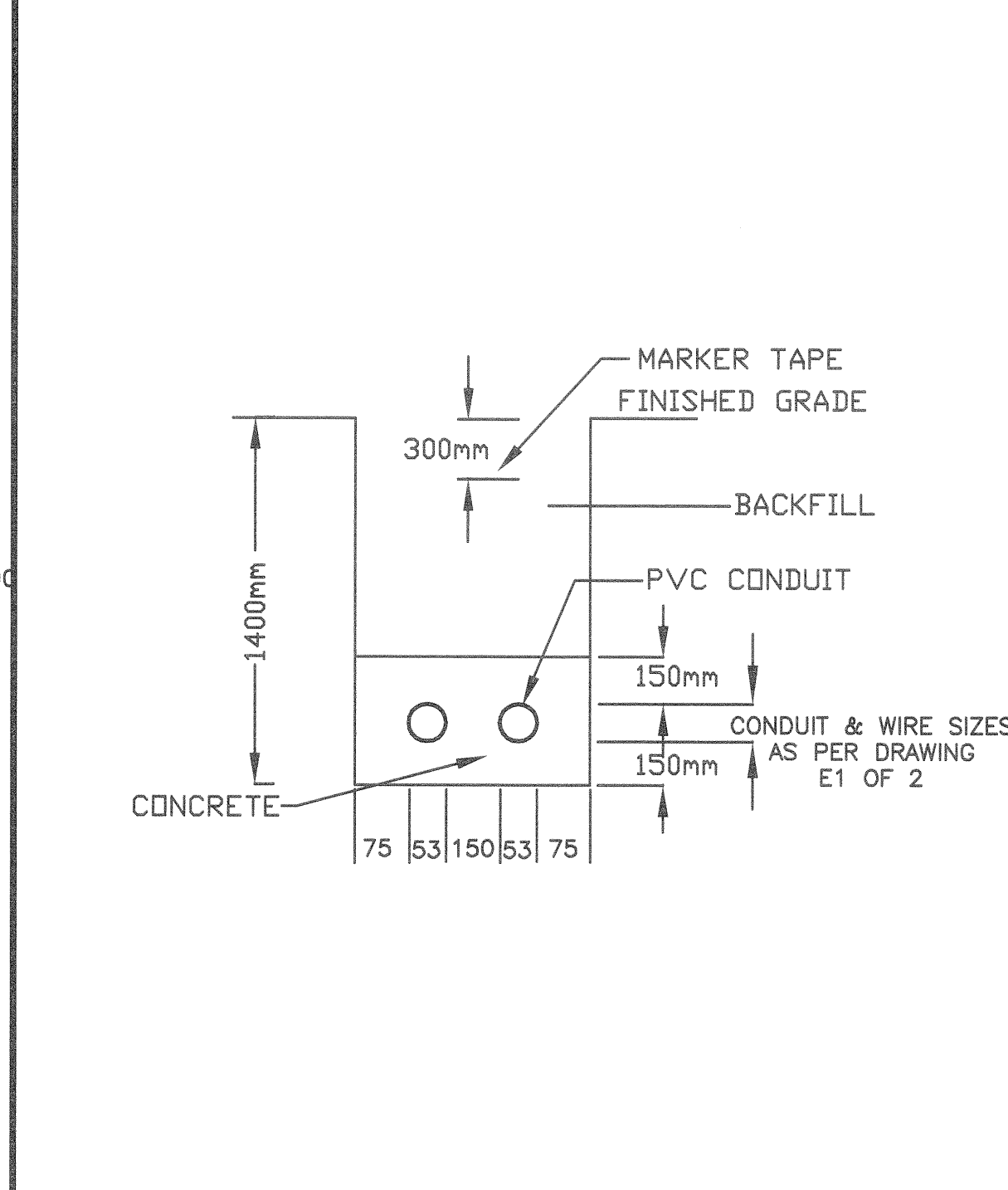
SHORE POWER DETAIL-P2



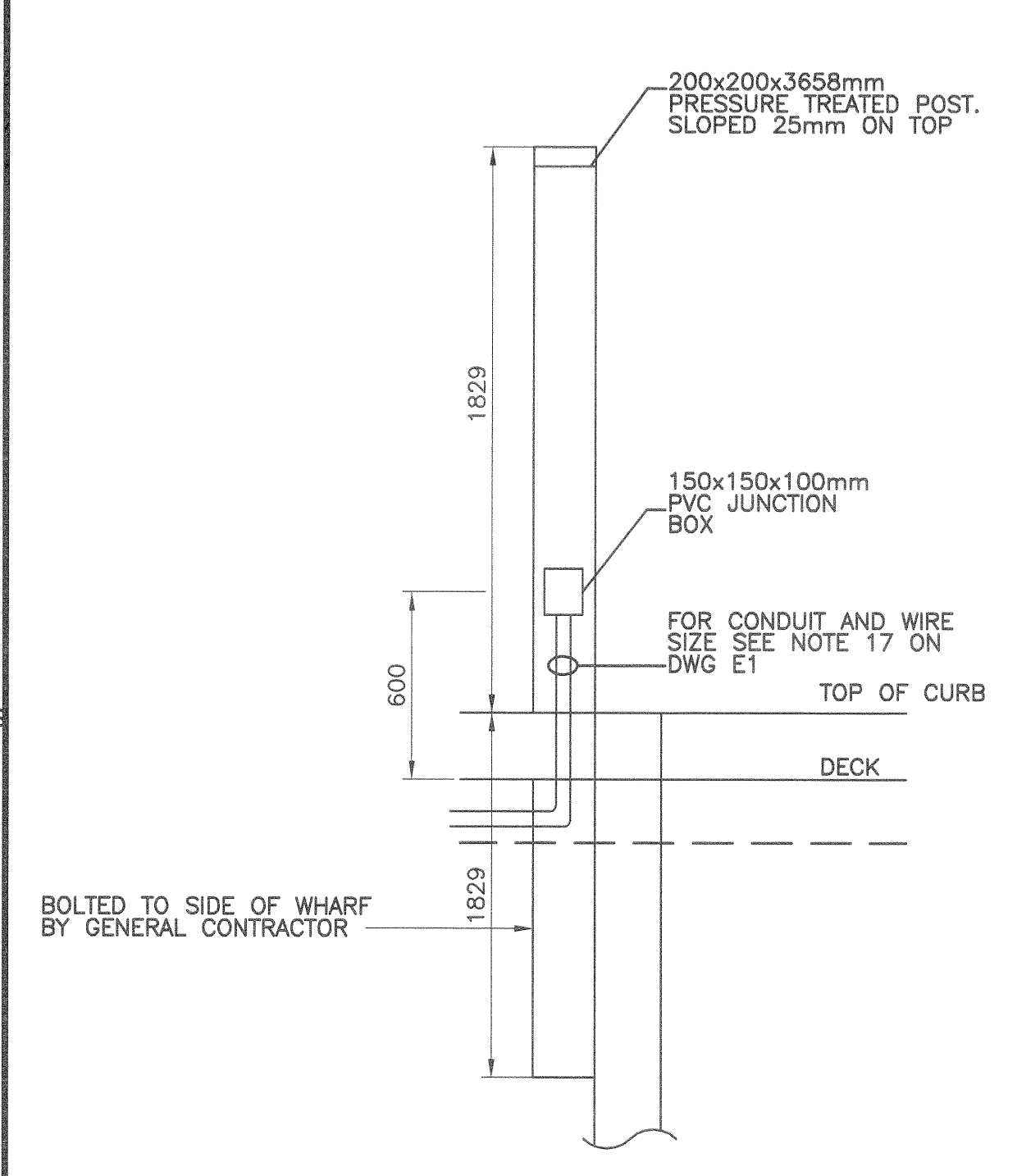
POWER RISER DIAGRAM




TRENCH DETAIL 'A-A'



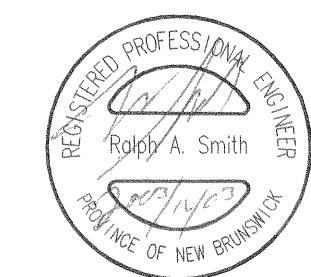
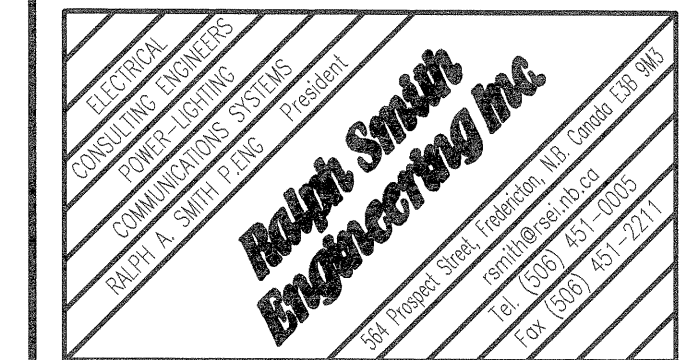
TRENCH DETAIL 'B-B'



POST AND JUNCTION BOX
FOR FUTURE SHORE POWER DETAIL SCALE : N.T.S

 Public Works and
Government Services
Canada

Electrical Consultant:



A detail no.
no. du detail


B location drawing no.
sur dessin no.

C drawing no.
dessin no.

HARBOUR
IMPROVEMENTS
BOYNE'S COVE

CHARLOTTE CO., N.B.

ELECTRICAL SYSTEMS
LAYOUTS & DETAILS

designed	RALPH SMITH, P.ENG, L.C.		conçu
date	2003.07.31		
drawn	ANTHONY BONNAR		dessiné
date	2003.07.31		
approved	RALPH SMITH, P.ENG, L.C.		approuvé
date	2003.07.31		
Tender	 P. Eng <div style="float: right;"> Submission 03/12/04 </div>		
PWGSS Project Manager		Administrateur de projets TPSSC	
project number	no. du projet		

project number	310307	no. du projet
drawing no.	E2 OF 2	no. du dessin