



Royal Canadian Mounted Police  
Gendarmerie royale du Canada

Doc. no: G.S. 1045-305  
Date: 2022-01-31

## Specification

### Shirt, Hybrid, Blue, F.R. Special Duty

This document has 20 pages including the drawings.

This document was created in English.

The document is available in English and French.

English/Anglais  
Français/French

The photograph on this page is for reference only.





## **RCMP VIEWING SAMPLE**

A viewing sample, when available, will be supplied to the successful bidder.

This will be used for the guidance of the manufacturer in all factors not covered by this specification or referred to therein. Variation from the specification may appear in the sample in which case the specification must govern.

It may be obtained from:

Royal Canadian Mounted Police  
ATTN: Uniform and Equipment Program  
(440 Coventry Road, Warehouse Building)  
73 Leikin Drive  
Ottawa, Ontario  
K1A 0R2

It will be sent “prepaid” and is to be returned “prepaid”.

The viewing sample must be returned to the RCMP in the same condition as received by the manufacturer. Lost or damaged viewing samples must be replaced by an identical item or the RCMP must be reimbursed for the cost of an acceptable replacement.

**SPECIFICATION**

**Shirt, Hybrid, Blue, FR, Special Duty**

**1 Definitions**

- 1.1 This specification must govern the manufacture and inspection of the Shirt, Blue, FR, Special Duty. The specific item covered under this specification with stock number is as follows:
  - i. 6057 Shirt, Hybrid, Blue, FR, Special Duty / Chemise hybride de fonction spéciale bleue ignifuge
  - ii. 6058-100 Shirt, Hybrid, Blue, FR, Special Duty, Special / Chemise hybride de fonction spéciale bleue ignifuge, tailles spéciales
- 1.2 This specification, pattern, drawing, viewing sample, or other information issued in connection therewith, may only be used for specific enquiries, solicitations, or orders placed on behalf of the Royal Canadian Mounted Police.
- 1.3 This specification supersedes all previous specifications for Shirt, Combat, FR Blue and Shirt, Blue, FR, Special Duty.
- 1.4 This specification has been translated into French from this original English language document.

**2 Applicable Specifications**

- 2.1 The following publications are applicable to this specification and to the issues in effect on the date of the solicitation, unless otherwise specified.
- 2.2 **American Society for Testing and Materials (ASTM)**
  - D5169 – 98 (R2021) Standard Test Method for Shear Strength (Dynamic Method) of Hook and Loop Touch Fasteners
  - D5170 – 98 (R2021) Standard Test Method for Peel Strength (“T” Method) of Hook and Loop Touch Fasteners
- 2.3 **General Services Administration, Commercial Item Description (CID)**
  - A-A-55217C Thread, Aramid, Spun Staple
- 2.4 **International Standards Organization (ISO);**
  - 4915:1991 Textiles – Stitch types

### 3 **General Requirements**

- 3.1 The article or material covered by this specification must be free from material and manufacturing defects that may affect its appearance or serviceability. In all particulars not covered by this specification or contract documents, production must be equivalent in all respects to the pattern and viewing sample.
- 3.2 **Design** – The Shirt, Hybrid, Blue, FR, Special Duty must be a semi-fitted, long sleeve shirt constructed with knit front and back body panels, and woven ripstop sleeves, collar, and front and back yokes. There must be sleeve cargo pockets with loop tape patches for attaching RCMP shoulder badges and rank insignia.

### 4 **Detail Requirements**

#### 4.1 **Components**

- 4.1.1 **Shell Material I (Woven)** – The Shell Material I is RCMP stock item number 9195-000, Cloth, Ripstop FR, Dark navy in colour and must be purchased from the RCMP.
- 4.1.2 **Shell Material II (Knit)** – The Shell Material II is RCMP stock number 9175-000, Cloth, Jersey, FR, Dark navy in colour and must be purchased from the RCMP.
- 4.1.3 **Fusible** – The interfacing must be 100% cotton woven fusible interfacing with a polyamide dot coating, with a mass of  $70 \text{ g/m}^2 \pm 5 \text{ g/m}^2$ .
- 4.1.4 **Thread**
- 4.1.4.1 **Thread for Seams (Fire Resistant)** – The thread must be aramid, Tex 40, Type I of matching colour, meeting standard A-A-55217C.
- 4.1.4.2 **Thread for Serging (Fire Resistant)** – The thread must be aramid, Tex 27, Type I of matching colour, meeting standard A-A-55217C.
- 4.1.5 **Slide Fastener (Fire Resistant)** – The slide fastener must be closed ended, injection molded #3 Vislon®, with an automatic locking slider. The tape must be Nomex® and the slide fastener must be black in colour. The slide fastener must come complete with one bottom stop and two top stops. YKK 23150 VSHRC 36 DA E 1/2\*3VSHR-NMX\*UL\* has been known to meet this requirement.

- 4.1.6 **Hook and Loop Tape** – The hook and loop tape must be fire retardant and black in colour, with a high life cycle. The combined hook and loop must have no less than 8 P.S.I length-wise shear strength with initial peel strength of not less than 1 P.I.W. when tested to ASTM D5169-98 (R2021), standard test method for shear strength [dynamic method] of hook and loop touch fasteners and ASTM D5170-98 (R2021), standard test method for peel strength ["T" method] of hook and loop touch fasteners.
- 4.2 **Size and Dimensions** – Shirt, Hybrid, Blue FR, Special Duty must be supplied in the sizes specified by the RCMP and to the dimensions given in the scale of measurements and drawings forming part of this specification. The garment components must be shaped, dimensioned and positioned in accordance with the pattern components and pattern requirements as outlined in Appendix A forming part of this specification.
- 4.3 **Construction**
- 4.3.1 **Cutting** – All component parts of the shirt must be cut from the same piece of corresponding material and must be cut following the grain line on the pattern piece to ensure uniformity of shade.
- 4.3.2 **Stitching** – Using the specified thread, there must be not less than three or more than four stitches per centimetre. All stitching must conform to the specified type outlined in ISO 4915. The construction of the shirt body and underarm seams must be cover stitch type 605. The stitching at the hem must be cover stitch type 406. All other stitching must be lockstitch. The beginning and ending of all stitching must be securely backstitched and tacked, unless secured by other stitching. Where seaming, turning and stitching are required the edges must be properly worked out before stitching. Bar tacks must be 10 mm in length and made with no less than 18 cover stitches per tack. Care must be taken to minimize unsightly gathering and puckering.
- 4.3.3 **Body**
- 4.3.3.1 **Torso** – The torso is made from Shell Material II as specified in para. 4.1.2. It includes a front torso with a centre front slit for a zippered placket closure, a back torso and two side torso panels. They must be joined together by means of a cover stitch Type 605.
- 4.3.3.2 **Underarm Sleeve** – The front underarm sleeve and the back underarm sleeve are made from Shell Material II as specified in para. 4.1.2. The front and back underarm sleeves must be joined together by means of a cover stitch type 605. The completed

underarm sleeve must be joined to the torso at the armhole means of a cover stitch Type 605.

- 4.3.4 **Sleeve Pockets** – The four-piece cargo pockets must be made from Shell Material I as per para. 4.1.1. The pocket bag must be made of Shell Material II as per para. 4.1.2. The pocket has a slide fastener as specified in para. 4.1.5 for closure. It must be inserted and topstitched with 2 mm gauge. There must be a zipper garage made from Shell Material I to cover the bottom stop of the slide fastener. There must be a pen pocket inserted between the slide fastener and the centre portion of the pocket. The top edge of the pen pocket must be serged and turned, and then topstitched with a 6 mm gauge. The outer layer of the cargo pocket must have one piece of loop tape, as per para. 4.1.6, topstitched with a 2 mm gauge, dimensioned and positioned as per the patterns and the drawings. The centre portion of the pocket, when combined with adjoining pieces, must be topstitched with a 2 mm gauge. When the cargo pocket is sewn to the yoke/upper sleeve piece, the side with the slide fastener and the pen pocket must be towards the front of the garment. The cargo pocket assembly must be sewn to the yoke upper sleeve piece and topstitched with a 6 mm gauge. All components of the cargo pockets must be constructed as per the patterns and Drawing 2.
- 4.3.5 **Yokes**
- 4.3.5.1 **Front & Front Yoke & Upper Sleeves** – The two yoke/upper sleeve pieces made from Shell Material I as per para. 4.1.1 must be stitched to the front torso and front sleeve underarm pieces, and then topstitched with a 6 mm gauge. The front and front yoke when finished must be shaped and dimensioned as per the pattern and viewing sample.
- 4.3.5.2 **Back & Back Yoke & Upper Sleeves** – The two yoke/upper sleeve pieces made from Shell Material I as per para. 4.1.1 must be stitched together, forming a centre back seam, and then topstitched with a 6 mm gauge on one side. The combined yoke/upper sleeve pieces must then be stitched to the back torso and back underarm sleeve pieces, and then topstitched with a 6 mm gauge.
- 4.3.6 **Bottom Hem** – The bottom edge of the shirt front and back must be hemmed by means of a two needle cover stitch Type 406.
- 4.3.7 **Collar & Front Placket** – The collar must be made from Shell Material I as per para. 4.1.1. The front placket facings and zipper garage must be made from Shell Material I as per para. 4.1.1. The front placket must be made from Shell Material II as per para. 4.1.2. The front placket must be folded, with the top and bottom edges stitched together, then turned and topstitched with a 2 mm gauge. The top edge of

the collar must be topstitched with a 2 mm gauge. The collar, once attached to the under collar, must be turned with corners worked out. Then the under collar must be stitched in the ditch to secure lower edge to neck seam. A slide fastener as specified in para. 4.1.5 must be applied to the centre front of the shirt and topstitched with a 2 mm gauge. The zipper garage must be inserted at the base of the slide fastener to cover the bottom stop. The collar, placket, and placket facing must be shaped and dimensioned as per the patterns and constructed as per drawings 1 and 3.

4.3.8 **Lower Sleeves** – The lower sleeve pieces must be constructed from Shell Material I as per para. 4.1.1. The lower sleeve pieces must be stitched to the four-piece cargo pocket as described in para. 4.3.4 and the underarm sleeves, and then topstitched with a 6 mm gauge. The sleeve hem must be turned at 1 cm, then again at 5.5 cm and topstitched with a 1.5 mm gauge from the folded edge. There must be a piece of loop tape dimensioned as per Table II and positioned within the hem of the sleeve as per the patterns and the Drawing 3. A sleeve hem adjuster tab, made of Shell Material I as specified in para. 4.1.1, must be stitched to the sleeve, positioned as per the pattern drill holes, to correspond with the loop tape on the hem. A piece of hook tape as specified in para. 4.1.6, 2 cm x 5 cm ± 0.2 cm must be applied to the back section of the sleeve adjuster tab as per the pattern template. The hem adjuster tab must be folded and stitched together, turned, edges and corners worked out, and topstitched with a 2 mm gauge. The sleeve hem adjuster tab must be secured to the sleeve with a row of vertical stitching, then turned and topstitched to the sleeve with a second row of vertical topstitching with a 6 mm gauge, and then finished with 2 vertical bar tacks. The lower sleeve and sleeve hem tab must be shaped and dimensioned as per the patterns and constructed as per the drawings.

#### 4.3.9 **Marking & Cleaning Instructions Labels**

4.3.9.1 **Marking Label (Fire Resistant)** – Each shirt must have either a direct silk screen printed label or a polyurethane adhesive heat transfer label that is heat bonded with inks. It must be applied to the centre back just below the yoke seam. The label material must not melt, separate, or ignite when tested for Heat Resistance to standard CAN/CGSB 155.20-2017 and/or NFPA 2112. The text must be of permanent inks of a contrasting colour and must withstand at least 50 wash cycles with no apparent change in appearance. All text except for the RCMP stock number and size must be in size 6 font. The RCMP stock number and size must appear in size 8 font. The manufacturer's identification must not appear anywhere on the garment except where indicated on the garment label. The label must contain the following information in English and French. Any portion of a hand written label is not acceptable.




1. Item name in English as written in para. 1.1
2. Item name in French as written in para. 1.1
3. RCMP stock number - reference contract documents. (Ex. 6058-100)
4. Size, height group of the article and fit designation, combining the size designation referenced in the English and French contract documents. (Ex. L/R Regular Fit - G/R Coupe régulière)
5. Date of manufacture, in numeric format year/month (Ex. 2020/11)
6. Your manufacturer identification (Company name or number).

4.3.9.2 **Cleaning Instructions Label (Fire Resistant)** – Each shirt must have either a direct silk screen printed label or a polyurethane adhesive heat transfer label that is heat bonded with inks. It must be applied to the lower centre back panel as per drawing 3. The label material must not melt, separate, or ignite when tested for Heat Resistance to standard CAN/CGSB 155.20-2017 and/or NFPA 2112. The text must be of permanent inks of a contrasting colour and must withstand at least 50 wash cycles with no apparent change in appearance. All text must appear in size 8 font. The manufacturer’s identification must not appear anywhere on the garment except where indicated on the garment label. The label must contain the following information in English and French. Any portion of a hand written label is not acceptable.

1. Print information as shown below.

1

	
Machine wash - cold (30°C)	Laver à la machine – à l’eau froide (30 °C)
<b>Do Not</b> use fabric softener or chlorine bleach	<b>Ne pas</b> utiliser d’agent assouplissant ou d’agent de blanchiment
Tumble dry- low ( <b>Do Not</b> use dryer sheets)	Séchage par culbutage – à basse température ( <b>Ne pas</b> utiliser d’assouplissant en feuilles)
Steam iron - low	Repassage à vapeur - à basse température
DO NOT DRY CLEAN.	NE PAS NETTOYER À SEC.
<p><b>WARNING</b></p> <p>FOR LIMITED PROTECTION AGAINST FLASH FIRES ONLY KEEP CLEAN – SOILING MAY REDUCE PROTECTIVE QUALITIES DO NOT REMOVE THIS LABEL</p> <p><b>AVERTISSEMENT</b></p> <p>PROTECTION LIMITÉE CONTRE LES FEUX À INFLAMMATION INSTANTANÉE GARDER LE VÊTEMENT PROPRE – LES SALETÉS PEUVENT DIMINUER LES QUALITÉS IGNIFUGES NE PAS RETIRER CETTE ÉTIQUETTE</p>	
Name/Nom :	

## 5 **Quality Assurance Provisions**

- 5.1 **Responsibility for Inspection** – Unless otherwise stipulated in the Contract, it is the Contractor's responsibility to satisfy the RCMP, Uniform and Equipment Program that the components and material being supplied conform to this specification. This may be accomplished by performing the tests specified in this specification or by demonstrating to the satisfaction of the RCMP, Uniform and Equipment Program that conformity to this specification of manufacturing processes is assured. The Contractor must use an independent commercial testing establishment.
- 5.2 The RCMP, Uniform and Equipment Program reserves the right to perform any inspection considered necessary to ensure the material and services conform to the specified requirements. For the purpose of inspection, a portion of each delivery not exceeding two percent or two out of any number delivered under 100 may be put to tests that could destroy the articles. If found to be inferior or not in accordance with this specification, all articles so destroyed must be replaced by others of proper quality and pattern at the expense of the Contractor. The entire delivery may also be rejected if it is found that articles previously rejected due to non-repairable defects are redelivered for inspection.
- 5.3 The Contractor will be promptly notified when any articles are not accepted and such articles will be returned at the contractor's risk and expense.

## 6. **Scale of Measurement Definitions and Location References**

(Refer to the Scale of Measurements and Drawing 4).

- 6.1 **Chest Circumference (total circumference)** – When placed flat, the chest circumference is the distance across the shirt, measured at the widest part of the chest. The result must be doubled to measure total circumference. (A).
- 6.2 **Waist Circumference (total circumference)** – When placed flat, the waist circumference is the distance across the shirt, measured at the narrowest part of the waist. The result must be doubled to measure total circumference. (B).
- 6.3 **Bottom Circumference (total circumference)** – When placed flat, the bottom is measured across the shirt bottom. The result must be doubled to measure total circumference. (C).
- 6.4 **Back Length** – The length is the distance measured from the bottom of the collar at the back to the hem. (D).
- 6.5 **Side Length** – The length is the distance measured on the side panel from the underarm sleeve seam to the hem. (E).
- 6.6 **Sleeve Length from Centre Back Neck** – The sleeve length is the distance from the neck seam at the centre back to the neck/shoulder seam, down the sleeve to the bottom edge of the sleeve hem. (F).
- 6.7 **Bicep Circumference** – The bicep is measured across the width of the sleeve at 2.5 cm below the armhole seam. The result must be doubled to measure total circumference. (G).
- 6.8 **Sleeve Hem Circumference** – The sleeve hem is measured at the bottom edge of the sleeve. The result must be doubled to measure total circumference. (H).
- 6.9 **Collar Length** – The collar length is measured along the seam from slide fastener opening edge to slide fastener opening edge. (J).

Scale of Measurements – Shirt, Hybrid, Blue, FR, Special Duty – Regular Fit												
Size Designation		Body Measurements		Garment Measurements								
Height Group	Size	Chest		Chest Circumference	Waist Circumference	Bottom Circumference	Back Length from CB Neck	Side Length	Sleeve Length from CB Neck	Bicep Circumference	Sleeve Hem Circumference	Collar Length
		Inches	cm									
Short	XS	34" - 36"	86 - 91	106.4	100.2	96.2	69.1	43.2	85.4	40.3	30.8	42.5
	S	37" - 39"	94 - 99	111.4	105.2	101.0	70.9	44.5	86.5	42.3	31.8	44.4
	M	40" - 42"	102 - 107	116.4	110.2	105.8	72.7	45.8	87.6	44.2	32.8	46.4
	L	43" - 45"	109 - 114	121.3	115.2	110.7	74.5	47.1	88.7	46.1	33.8	48.3
	XL	46" - 48"	117 - 122	126.3	120.2	115.7	76.3	48.4	89.8	48.1	34.8	50.3
	2XL	49" - 51"	124 - 129	131.3	125.2	120.6	78.1	49.7	90.9	50.0	35.8	52.3
	3XL	52" - 54"	132 - 137	136.3	130.2	125.6	79.8	51.0	92.1	52.0	36.8	54.2
Regular	XS	34" - 36"	86 - 91	106.4	100.2	96.2	73.1	47.2	89.4	40.3	30.8	42.5
	S	37" - 39"	94 - 99	111.4	105.2	101.0	74.9	48.5	90.5	42.3	31.8	44.4
	M	40" - 42"	102 - 107	116.4	110.2	105.8	76.7	49.8	91.6	44.2	32.8	46.4
	L	43" - 45"	109 - 114	121.3	115.2	110.7	78.5	51.1	92.7	46.1	33.8	48.3
	XL	46" - 48"	117 - 122	126.3	120.2	115.7	80.3	52.4	93.8	48.1	34.8	50.3
	2XL	49" - 51"	124 - 129	131.3	125.2	120.6	82.1	53.7	94.9	50.0	35.8	52.3
	3XL	52" - 54"	132 - 137	136.3	130.2	125.6	83.8	55.0	96.0	52.0	36.8	54.2
Tall	XS	34" - 36"	86 - 91	106.4	100.2	96.2	77.1	51.2	93.4	40.3	30.8	42.5
	S	37" - 39"	94 - 99	111.4	105.2	101.0	78.9	52.5	94.5	42.3	31.8	44.4
	M	40" - 42"	102 - 107	116.4	110.2	105.8	80.7	53.8	95.6	44.2	32.8	46.4
	L	43" - 45"	109 - 114	121.3	115.2	110.7	82.5	55.1	96.7	46.1	33.8	48.3
	XL	46" - 48"	117 - 122	126.3	120.2	115.7	84.3	56.4	97.8	48.1	34.8	50.3
	2XL	49" - 51"	124 - 129	131.3	125.2	120.6	86.1	57.7	98.9	50.0	35.8	52.3
	3XL	52" - 54"	132 - 137	136.3	130.2	125.6	87.8	59.0	100.0	52.0	36.8	54.2
X-Tall	XS	34" - 36"	86 - 91	106.4	100.2	96.2	81.1	55.2	97.3	40.3	30.8	42.5
	S	37" - 39"	94 - 99	111.4	105.2	101.0	82.9	56.5	98.4	42.3	31.8	44.4
	M	40" - 42"	102 - 107	116.4	110.2	105.8	84.7	57.8	99.6	44.2	32.8	46.4
	L	43" - 45"	109 - 114	121.3	115.2	110.7	86.5	59.1	100.7	46.1	33.8	48.3
	XL	46" - 48"	117 - 122	126.3	120.2	115.7	88.3	60.4	101.8	48.1	34.8	50.3
	2XL	49" - 51"	124 - 129	131.3	125.2	120.6	90.1	61.7	102.9	50.0	35.8	52.3
	3XL	52" - 54"	132 - 137	136.3	130.2	125.6	91.8	63.0	104.0	52.0	36.8	54.2
Tolerance ±				2 cm	2 cm	2 cm	1.5 cm	1 cm	1.5 cm	1 cm	1 cm	1 cm
Measurement Location				A	B	C	D	E	F	G	H	J

**NOTE:** All dimensions are in centimetres unless otherwise indicated.

Scale of Measurements – Shirt, Hybrid, Blue, FR, Special Duty – Relaxed Fit												
Size Designation		Body Measurements		Garment Measurements								
Height Group	Size	Chest		Chest Circumference	Waist Circumference	Bottom Circumference	Back Length from CB Neck	Side Length	Sleeve Length from CB Neck	Bicep Circumference	Sleeve Hem Circumference	Collar Length
		Inches	cm									
Short	XS	34" - 36"	86 - 91	107.6	107.5	108.2	69.1	43.2	85.4	40.3	30.8	42.5
	S	37" - 39"	94 - 99	112.6	112.5	113.0	70.9	44.5	86.5	42.3	31.8	44.4
	M	40" - 42"	102 - 107	117.6	117.5	117.8	72.7	45.8	87.6	44.2	32.8	46.4
	L	43" - 45"	109 - 114	122.6	122.5	122.7	74.5	47.1	88.7	46.1	33.8	48.3
	XL	46" - 48"	117 - 122	127.6	127.5	127.7	76.3	48.4	89.8	48.1	34.8	50.3
	2XL	49" - 51"	124 - 129	132.6	132.5	132.6	78.1	49.7	90.9	50.0	35.8	52.3
	3XL	52" - 54"	132 - 137	137.6	137.5	137.6	79.8	51.0	92.1	52.0	36.8	54.2
Regular	XS	34" - 36"	86 - 91	107.6	107.5	108.2	73.1	47.2	89.4	40.3	30.8	42.5
	S	37" - 39"	94 - 99	112.6	112.5	113.0	74.9	48.5	90.5	42.3	31.8	44.4
	M	40" - 42"	102 - 107	117.6	117.5	117.8	76.7	49.8	91.6	44.2	32.8	46.4
	L	43" - 45"	109 - 114	122.6	122.5	122.7	78.5	51.1	92.7	46.1	33.8	48.3
	XL	46" - 48"	117 - 122	127.6	127.5	127.7	80.3	52.4	93.8	48.1	34.8	50.3
	2XL	49" - 51"	124 - 129	132.6	132.5	132.6	82.1	53.7	94.9	50.0	35.8	52.3
	3XL	52" - 54"	132 - 137	137.6	137.5	137.6	83.8	55.0	96.0	52.0	36.8	54.2
Tall	XS	34" - 36"	86 - 91	107.6	107.5	108.2	77.1	51.2	93.4	40.3	30.8	42.5
	S	37" - 39"	94 - 99	112.6	112.5	113.0	78.9	52.5	94.5	42.3	31.8	44.4
	M	40" - 42"	102 - 107	117.6	117.5	117.8	80.7	53.8	95.6	44.2	32.8	46.4
	L	43" - 45"	109 - 114	122.6	122.5	122.7	82.5	55.1	96.7	46.1	33.8	48.3
	XL	46" - 48"	117 - 122	127.6	127.5	127.7	84.3	56.4	97.8	48.1	34.8	50.3
	2XL	49" - 51"	124 - 129	132.6	132.5	132.6	86.1	57.7	98.9	50.0	35.8	52.3
	3XL	52" - 54"	132 - 137	137.6	137.5	137.6	87.8	59.0	100.0	52.0	36.8	54.2
X-Tall	XS	34" - 36"	86 - 91	107.6	107.5	108.2	81.1	55.2	97.3	40.3	30.8	42.5
	S	37" - 39"	94 - 99	112.6	112.5	113.0	82.9	56.5	98.4	42.3	31.8	44.4
	M	40" - 42"	102 - 107	117.6	117.5	117.8	84.7	57.8	99.6	44.2	32.8	46.4
	L	43" - 45"	109 - 114	122.6	122.5	122.7	86.5	59.1	100.7	46.1	33.8	48.3
	XL	46" - 48"	117 - 122	127.6	127.5	127.7	88.3	60.4	101.8	48.1	34.8	50.3
	2XL	49" - 51"	124 - 129	132.6	132.5	132.6	90.1	61.7	102.9	50.0	35.8	52.3
	3XL	52" - 54"	132 - 137	137.6	137.5	137.6	91.8	63.0	104.0	52.0	36.8	54.2
Tolerance ±				2 cm	2 cm	2 cm	1.5 cm	1 cm	1.5 cm	1 cm	1 cm	1 cm
Measurement Location				A	B	C	D	E	F	G	H	J

**NOTE:** All dimensions are in centimetres unless otherwise indicated.

**TABLE I**  
**Slide Fastener Lengths in Inches**

Slide Fastener Lengths							
Height Group	Sizes	Centre Front	Sleeve Pockets	Height Group	Sizes	Centre Front	Sleeve Pockets
Short	XS	8	6½	Tall	XS	8	8
	S	8	6½		S	8	8
	M	8	6½		M	8	8
	L	8	7		L	8	8½
	XL	8	7		XL	8	8½
	2XL	8	7		2XL	8	8½
	3XL	8	7		3XL	8	8½
Regular	XS	8	7½	X Tall	XS	8	9
	S	8	7½		S	8	9
	M	8	7½		M	8	9
	L	8	8		L	8	9½
	XL	8	8		XL	8	9½
	2XL	8	8		2XL	8	9½
	3XL	8	8		3XL	8	9½

**TABLE II**  
**Loop Tape for Sleeve adjustment in centimeters**

Sleeve Adjustment Loop Tape Lengths		
Height Group	Sizes	Loop Tape
All Height Groups	XS	13.5
	S	14.5
	M	15.5
	L	16.5
	XL	17.5
	2XL	18.5
	3XL	19.5

## APPENDIX A

### Sealed Pattern Identifier

Pattern Titles:

Shirt, Blue, Hybrid, FR, Special Duty, Regular Fit

Shirt, Blue, Hybrid, FR, Special Duty, Relaxed Fit

Patterns – Patterns are available from the RCMP, Uniform and Equipment Program. Firms requested to produce Pre-Award Samples will be provided with the base pattern only. The full set of patterns either in individual sizes or as a graded nest will be provided to the successful bidder after the contract is awarded. The bidder will receive the files electronically in a .DXF format unless paper is requested.

The patterns include seam allowances, drill holes and/or placement templates. All pieces must be cut in the direction indicated on the grain line of the pattern pieces. The scale of measurements indicates the finished garment measurements however the patterns may not reflect the same measurements. The manufacturer is responsible for making changes to the pattern, if necessary, in order to meet the scale of measurements, adjust for shrinkage/stretch and/or to suit the production process, however, the design and grade must not be affected or changed.

All patterns are the property of the RCMP and must be returned upon completion of the contract. Electronic patterns must be deleted from the Contractor’s files.

Pattern Pieces: 22 pattern components

<p><b><u>Legend:</u></b>                  Shell Material I = Para. 4.1.1                  Shell Material II = Para. 4.1.2                  Fusible = Para. 4.1.3</p>
<p>Cut 1 Single = Cut 1                  Cut 1 Paired = Cut 2                  Cut 2 Paired = Cut 4                  (RSU) = Right Side Up                  (GSU) = Glue Side Up</p>

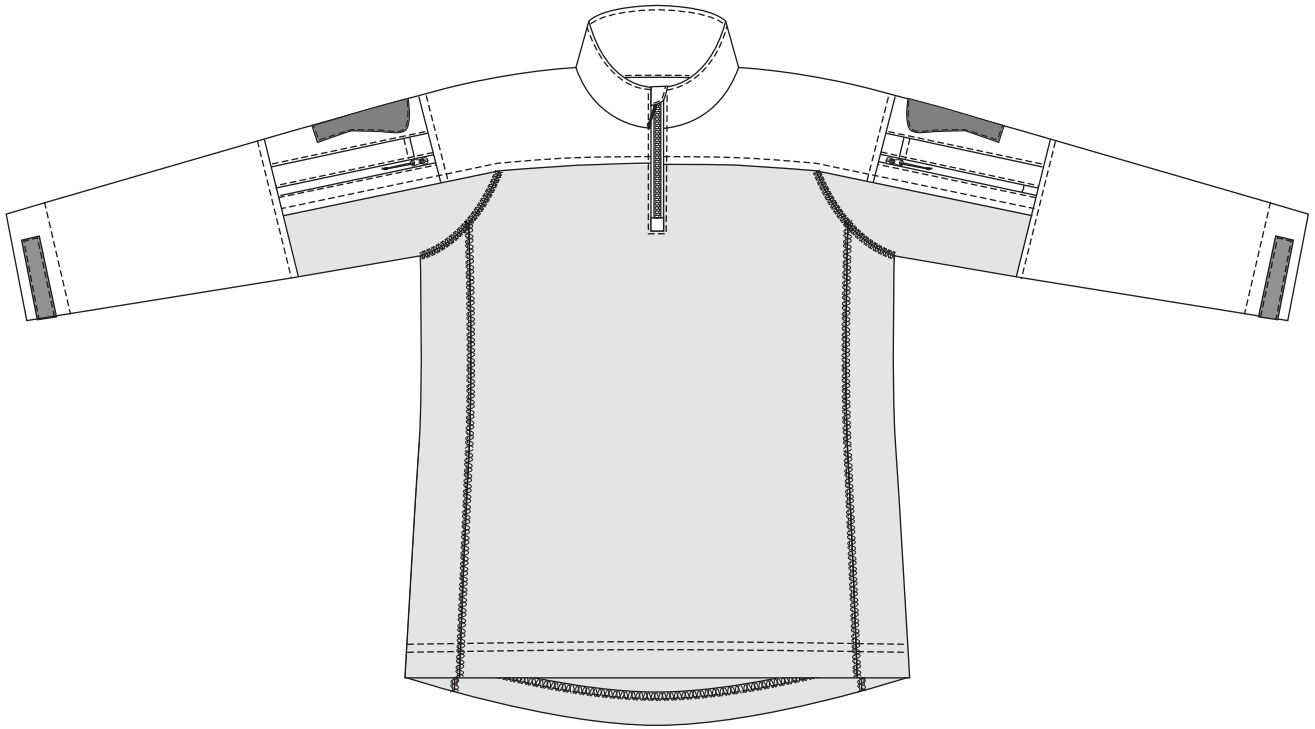
<b>Pattern Components</b>	<b>Nomenclature</b>	<b>Quantity to be cut</b>	<b>Material</b>
# 1 of 22	Torso – Front	1 Single	Shell Material II (RSU)
# 2 of 22	Torso – Back	1 Single	Shell Material II (RSU)
# 3 of 22	Torso – Side	1 Paired	Shell Material II
# 4 of 22	Sleeve Underarm – Front	1 Paired	Shell Material II
# 5 of 22	Sleeve Underarm – Back	1 Paired	Shell Material II
# 6 of 22	Front Placket	1 Single	Shell Material II
# 7 of 22	Sleeve Pocket Bag	1 Paired	Shell Material II
# 8 of 22	Upper Sleeve	1 Paired	Shell Material I
# 9 of 22	Lower Sleeve	1 Paired	Shell Material I
# 10 of 22	Top Collar	1 Single	Shell Material I (RSU)
# 11 of 22	Under Collar	1 Single	Shell Material I (RSU)
# 12 of 22	Fusible – Top Collar	1 Single	Fusible (GSU)
# 13 of 22	Sleeve Pocket – Part A	1 Paired	Shell Material I
# 14 of 22	Sleeve Pocket – Part B	1 Paired	Shell Material I
# 15 of 22	Sleeve Pocket – Part C	1 Paired	Shell Material I
# 16 of 22	Sleeve Pocket – Part D	1 Paired	Shell Material I
# 17 of 22	Pen Pocket	1 Paired	Shell Material I
# 18 of 22	Front Placket Facing	1 Paired	Shell Material I
# 19 of 22	Sleeve Tab	1 Paired	Shell Material I
# 20 of 22	Zipper Garage	3 Single	Shell Material I
# 21 of 22	Facing – Interior Zipper Base	1 Single	Shell Material I
# 22 of 22	Shoulder Flash Template – Velcro	1 Paired	Loop Tape



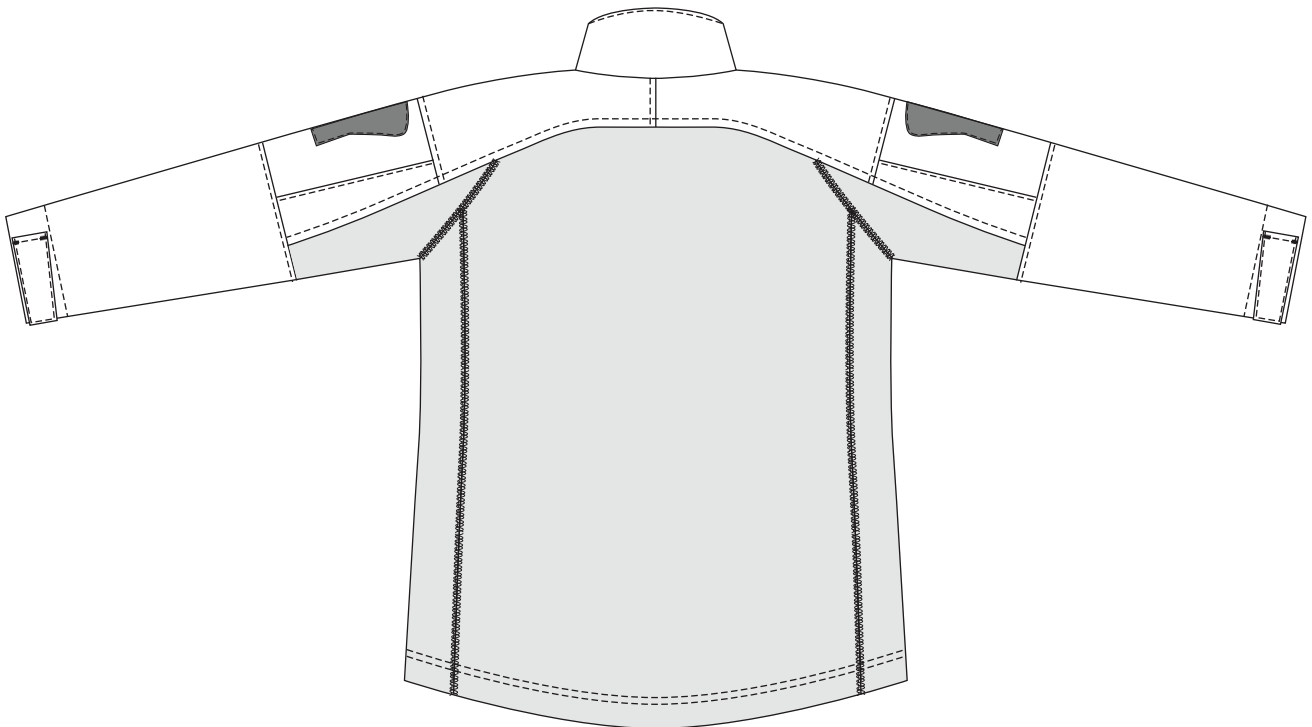
# Drawing 1

GS 1045 - 305

Shirt, Hybrid, Blue, FR, Special Duty



**Front View**



**Back View**

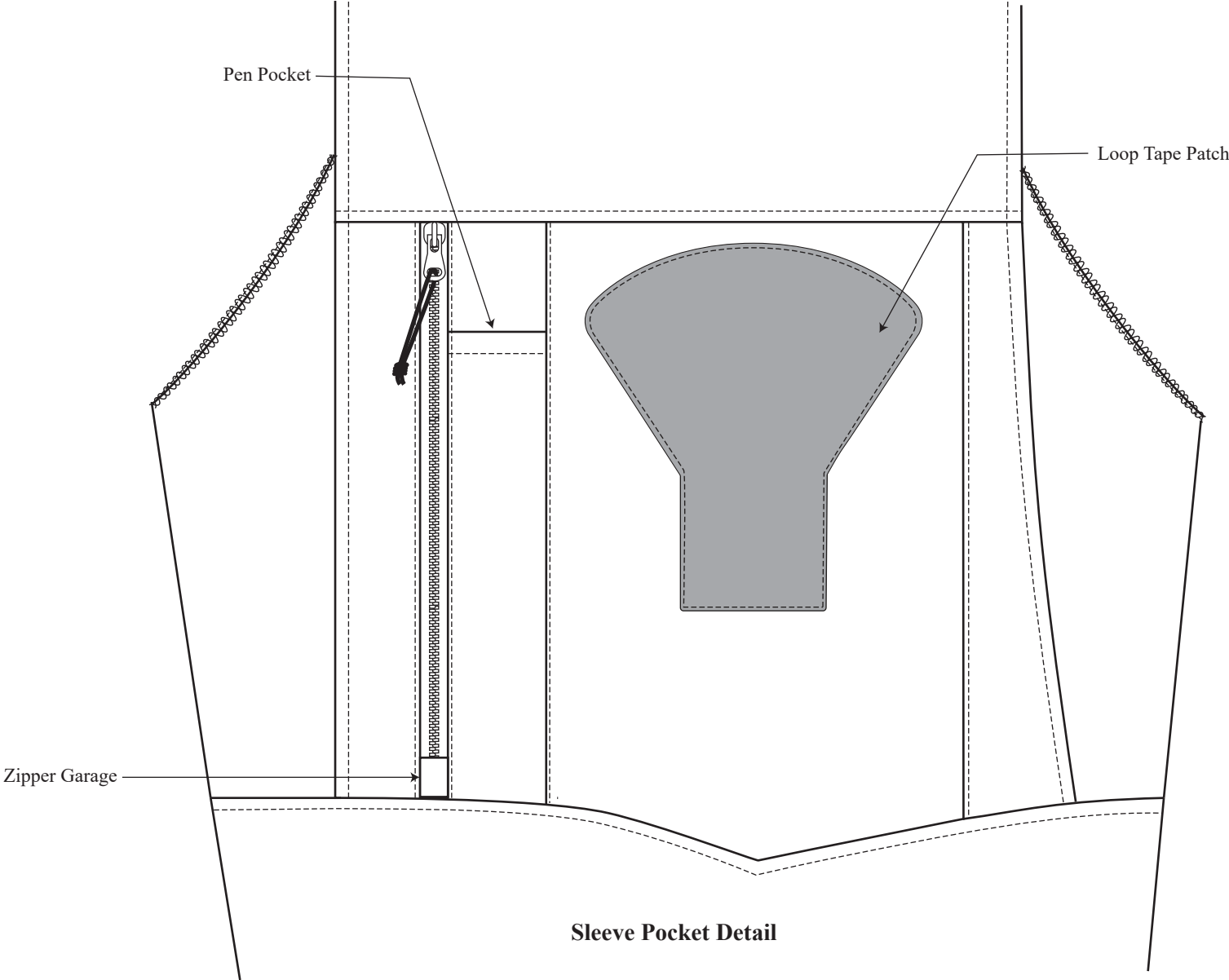
NOT TO SCALE

All measurements are shown in centimeters.

± 0.5 cm tolerance acceptable unless otherwise indicated.

# Drawing 2

Shirt, Hybrid, Blue, FR, Special Duty

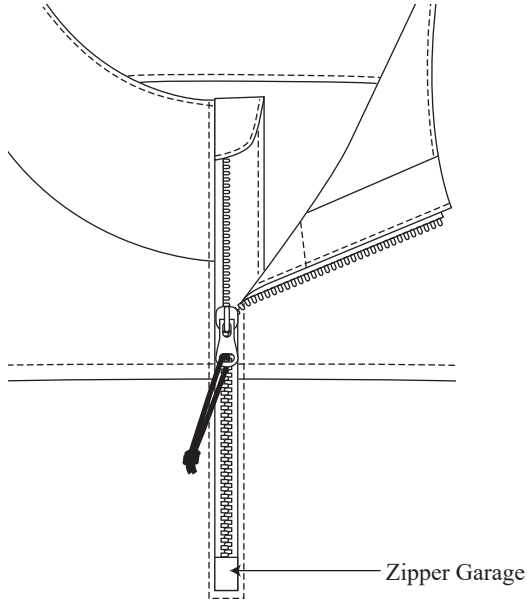


NOT TO SCALE  
All measurements are shown in centimeters.  
± 0.5 cm tolerance acceptable unless otherwise indicated.

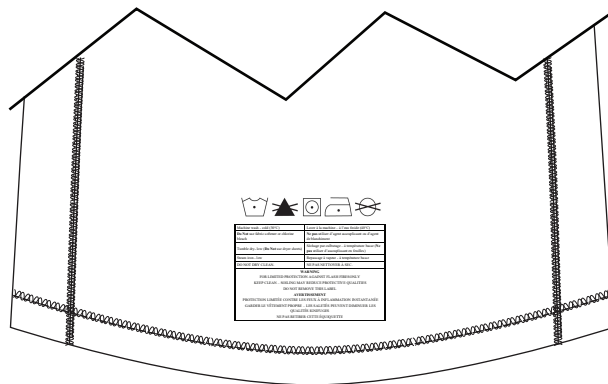
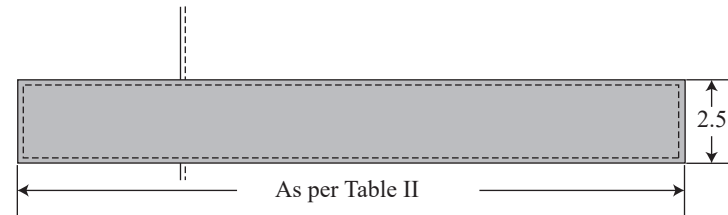
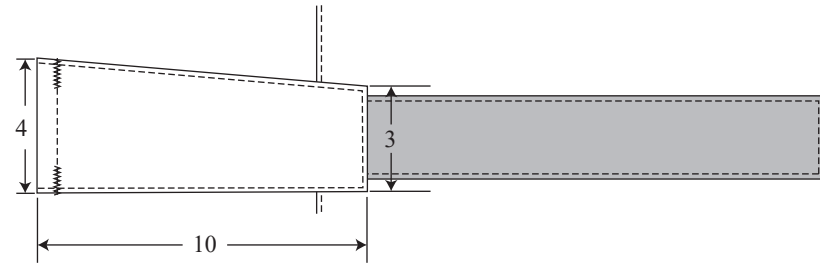
# Drawing 3

GS 1045 - 305

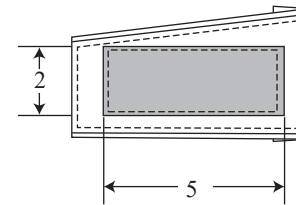
Shirt, Hybrid, Blue, FR, Special Duty



**Front Placket Detail**



**Cleaning Instructions Label**



**Sleeve Hem Adjuster Detail**

NOT TO SCALE

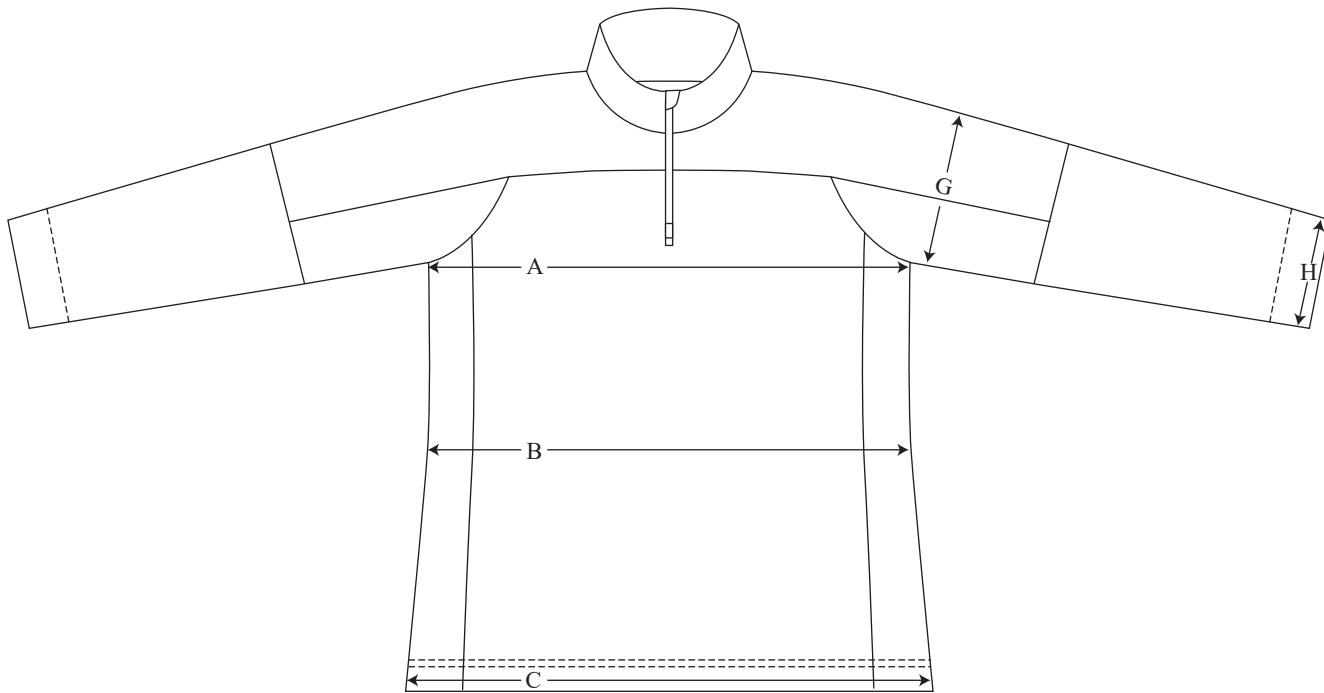
All measurements are shown in centimeters.

± 0.5 cm tolerance acceptable unless otherwise indicated.

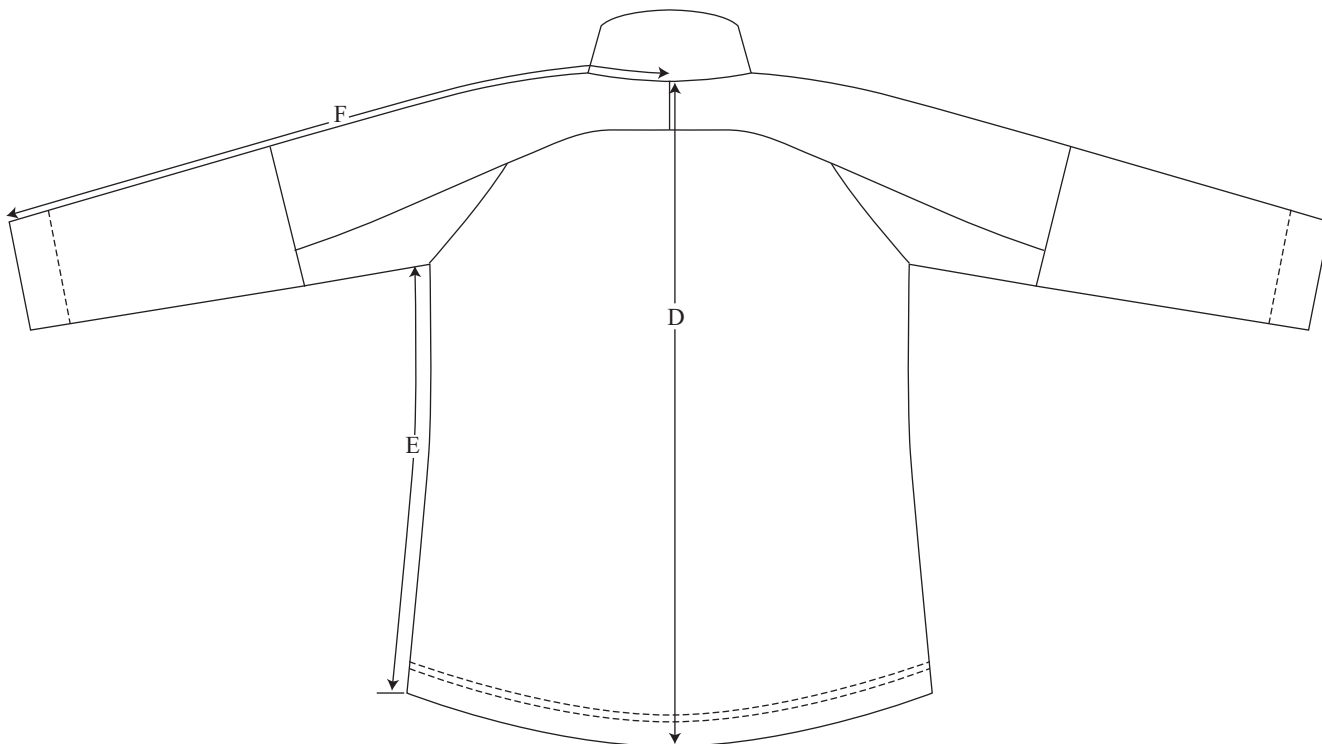
# Drawing 4

GS 1045 - 305

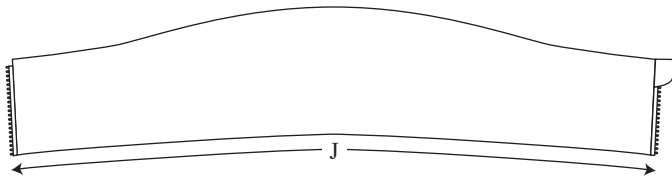
Shirt, Hybrid, Blue, FR, Special Duty  
Measurement Location



Front View



Back View



Collar View

NOT TO SCALE