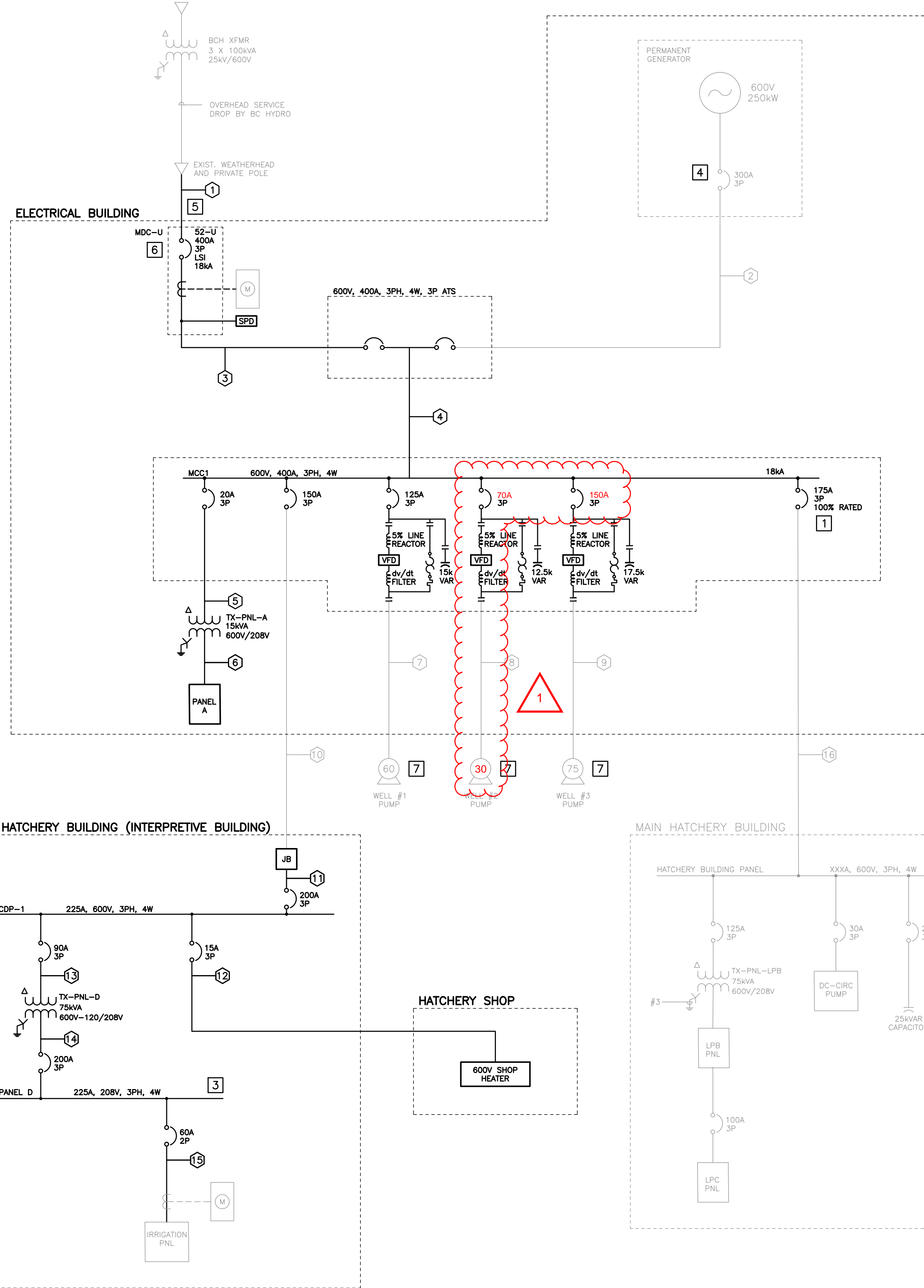


P:\2025\0 - Cowichan - Hatchery - Distribution - Upgrades\01 - Consultation - Engineering - Services\Drawings\0001 - 00 - 2025\2025\_01 - 21 - P1 - ROBERT PETERSON



FEEDER CABLE SCHEDULE								
ID	FROM	TO	RUNS	CABLE SIZE	BOND	CONDUCTOR TYPE	CONDUIT	NOTES:
1	PRIVATE WEATHERHEAD	MAIN BREAKER (52-U)	1	4-No. 600 kCMIL Cu	No. 2 Cu	RW90	EXIST-103mm	1,4
2	GENERATOR	ATS	1	4-No. 500 kCMIL Cu	Incl.	TECK	N/A	2
3	MAIN BREAKER (52-U)	ATS	2	4-No. 3/0 Cu	No. 6 Cu	RW90	53mm EMT	
4	ATS	MCC1	2	4-No. 3/0 Cu	No. 6 Cu	RW90	53mm EMT	
5	MCC1	TX-PNL-A	1	3-No. 12 Cu	No. 12 Cu	RW90	21mm EMT	
6	TX-PNL-A	PANEL A	1	4-No. 8 Cu	No. 10 Cu	RW90	35mm EMT	
7	MCC1	WELL #1 PUMP	1	3-No. 4 Cu	Incl.	TECK-EXIST	N/A	2
8	MCC1	WELL #2 PUMP	1	3-No. 4 Cu	Incl.	TECK-EXIST	N/A	2
9	MCC1	WELL #3 PUMP	1	3-No. 3 Cu	Incl.	TECK-EXIST	N/A	2
10	MCC1	JB	1	4-No. 1/0 Cu	No. 6 Cu	RW90	53mm EMT	2
11	JB	CDP-1	1	4-No. 1/0 Cu	No. 6 Cu	RW90	53mm EMT	
12	CDP-1	600V SHOP HEATER	1	3-No. 12 Cu	No. 12 Cu	RW90	21mm EMT	2,3
13	CDP-1	TX-PNL-D	1	3-No. 1/0 Cu	No. 6 Cu	RW90	41mm EMT	
14	TX-PNL-D	PANEL D	2	4-No. 4/350	No. 3 Cu	RW90	78mm EMT	
15	PANEL D	IRRIGATION PANEL	1	4-No. 6 Cu	No. 8 Cu	RW90	35mm EMT	
16	MCC1	HATCHERY BUILDING PANEL	1	4-No. 2/0 Cu	No. 6 Cu	RW90	53mm EMT	2
17								

- NOTES:
1. Re-use existing conduit
  2. Re-use existing conduit and conductors
  3. Contractor to confirm the size and adequacy of installed cable with the load
  4. Contractor to confirm conduit size and notify Consultant if it is less than 103mm

**NOTES:**

1. CONTRACTOR TO CONFIRM EXISTING BREAKER SIZE PRIOR TO ORDERING EQUIPMENT.
2. ITEMS IN LIGHT LINETYPE ARE EXISTING OUTSIDE OF SCOPE OF WORK. ITEMS IN DARK LINETYPE ARE TO BE PROVIDED UNLESS NOTED OTHERWISE.
3. PROVIDE NEW PANELBOARD TO REPLACE EXISTING FPE STABLOK 240V PANEL.
4. CONTRACTOR TO CONFIRM EXISTING BREAKER SIZE. PRIOR TO ORDERING EQUIPMENT, NOTIFY ENGINEER IF SIZE DEVIATES FROM DRAWING.
5. CONTRACTOR TO CONFIRM EXIST. CONDUIT SIZE. NOTIFY CONSULTANT IF CONDUIT IS SMALLER THAN 103mm.
6. PROVIDE ELECTRONIC TRIP BREAKER COMPLETE WITH CURRENT, POWER FACTOR, KW, AND KVA METERING CAPABILITIES.
7. CONTRACTOR TO CONFIRM EXISTING WELL PUMP HORSEPOWER AND FULL LOAD AMPS. PRIOR TO ORDERING EQUIPMENT.
8. CONTRACTOR SHALL PROVIDE ALL AS-CONSTRUCTED FIELD INFORMATION TO CONSULTANT REQUIRED FOR COMPLETION OF A SITE-WIDE ARC FLASH STUDY INCLUDING BUT NOT LIMITED TO: CONDUCTOR SIZES, CONDUCTOR LENGTHS, EQUIPMENT CONFIGURATIONS, BREAKER FRAME AND TRIP UNIT MODELS AND PHOTOS, TRANSFORMER NAMEPLATE DATA, AND MOTOR NAMEPLATE DATA.

**ISSUED FOR TENDER  
NOT FOR CONSTRUCTION**

ALL EQUIPMENT IS PROPOSED  
UNLESS NOTED OTHERWISE

**FISHERIES AND OCEANS CANADA**  
REAL PROPERTY AND TECHNICAL SUPPORT

 <b>PBX ENGINEERING</b> PBX ENGINEERING Ltd. Suite 200 - 2612 Bridge St. Victoria BC, V8T 4S9 Tel 250.388.7222	<b>COWICHAN HATCHERY ELECTRICAL UPGRADES</b>  <b>PROPOSED SINGLE LINE DIAGRAM</b>	SCALE N/A DATE 26-JAN-21 DRAWING NUMBER <span style="font-size: 2em; font-weight: bold;">E051</span> REVISION <span style="border: 1px solid black; padding: 2px;">1</span>
--	---	--

NO.	DATE	REVISIONS
1	2022-04-22	ISSUED FOR ADDENDUM #1
0	2021-02-08	ISSUED FOR TENDER

NOTES