

FOR BIDDING PURPOSES

CABLEWAY UPGRADES & REPAIRS TASEKO RIVER (08MA003)

LIST OF DRAWINGS:

- DWG-01: TITLE BLOCK
- DWG-02: ASSET REMOVAL AND INSTALLATION PLAN
- DWG-03: PLATE ANCHOR AND ROPE ATTACHMENT WITH DETAILS
- DWG-04: STEEL FOOTINGS AND ROPE ATTACHMENTS
- DWG-05: STEEL PLATE ANCHOR DETAILS
- DWG-06: 1982 AS-BUILT DRAWING
- DWG-07: PIPE A-FRAME GENERAL ASSEMBLY

Item	Description	Quantity	Unit
0	STANDARD TENDER	1	2022-08

Project:
 CABLEWAY UPGRADES &
 REPAIRS
 TASEKO RIVER
 08MA003

Location:
 TASEKO RIVER AT OUTLET
 OF TASEKO LAKES
 BRITISH COLUMBIA

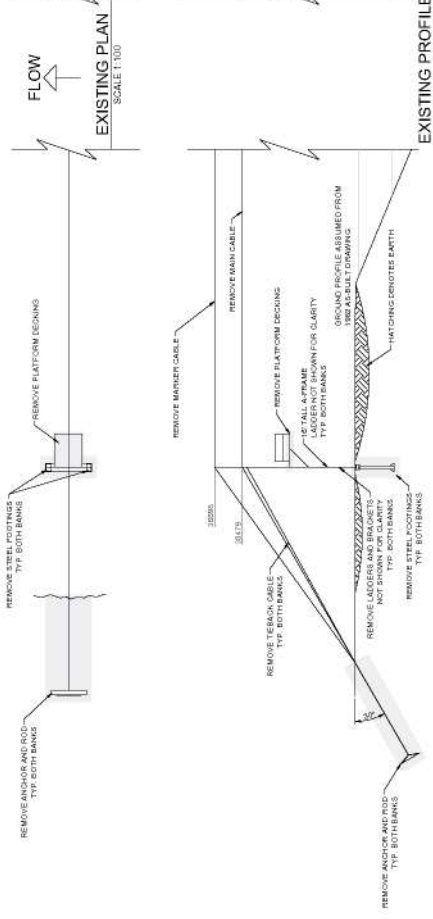
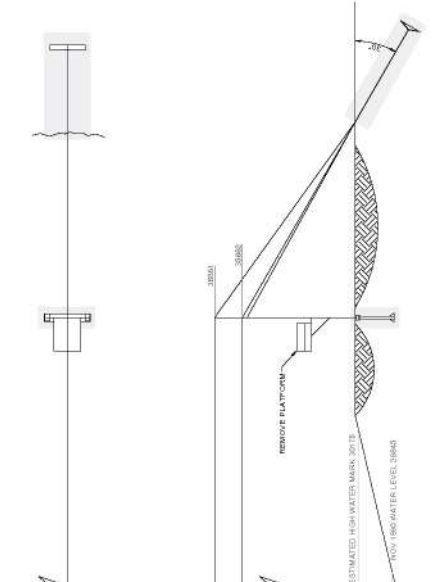
Contract No.:
ECG:
ECG2:
ECG3:
ECG4:
ECG5:
ECG6:
ECG7:
ECG8:
ECG9:
ECG10:

TITLE BLOCK

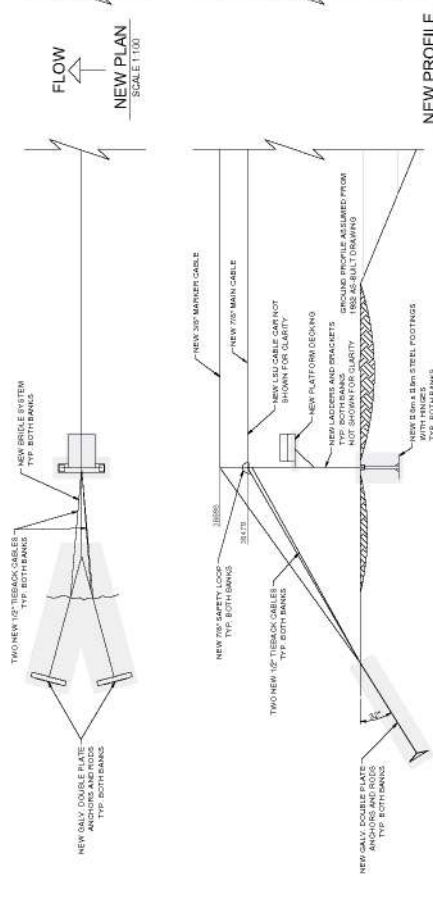
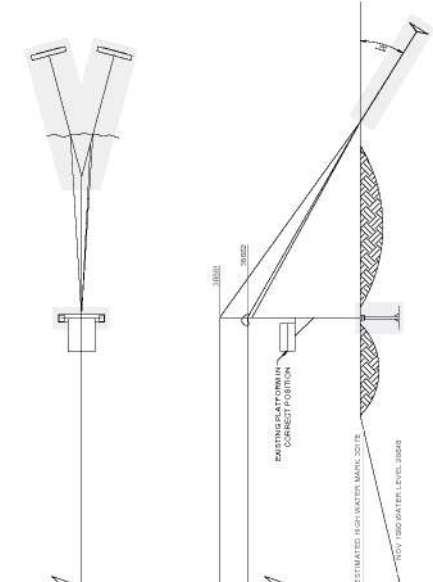
ASSET REMOVAL

FOR BIDDING PURPOSES

- NOTES:**
- 1. REMOVE MAIN CABLE.
 - 2. REMOVE TIEBACK CABLES ON BOTH BANKS.
 - 3. REMOVE ANCHOR PLATES AND ROSS BANKS (FOR FOOTINGS TOTAL).
 - 4. REMOVE LADDERS AND BRACKETS.
 - 5. REMOVE PLATFORM DECKING ON BOTH BANKS.
 - 6. REMOVE PLATFORM ON FAR-SIDE.
 - 7. REMOVE CABLE CAR.
 - 8. INSTALL NEW MAIN CABLE INCLUDING CABLE HANGDOWN AND INSTALL NEW MAIN CABLE.
 - 9. INSTALL NEW MAIN CABLE PER BANK INCLUDING CABLE PER BANK INCLUDING CABLE.
 - 10. INSTALL TWO NEW ANCHOR PLATES HINGED ON BOTH BANKS.
 - 11. INSTALL NEW BRICKLE SYSTEM BOTH BANKS.
 - 12. NEW FOOTINGS WITH NEW HINGED ON BOTH BANKS AND BRACKETS ON BOTH BANKS.
 - 13. INSTALL NEW PLATFORM DECKING ON BOTH BANKS.
 - 14. REINSTATE EXISTING PLATFORM IN ORIGINAL POSITION ON FAR-SIDE.
 - 15. INSTALL NEW LADDERS AND BRACKETS ON FAR-SIDE.
 - 16. INSTALL NEW 1/2" TIEBACK CABLES.
 - 17. SET MAIN AND MAIN CABLE SAGS.
- SEE STATEMENT OF WORK FOR FULL DESCRIPTION OF WORKS REQUIRED. CABLE ELEVATIONS TO REMAIN THE SAME BEFORE AND AFTER REPAIRS.



ASSET INSTALLATION



Water Safety
Asset Protection
Rehabilitation Program

Item	Description	Quantity	Unit
0	1000000 TRUCK	1000.00	TRUCK

CABLEWAY UPGRADES & REPAIRS TASEKO RIVER 08MA003

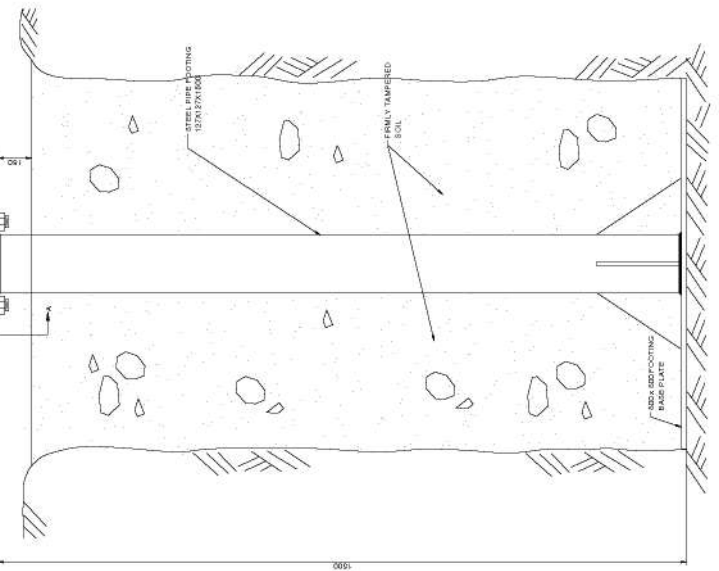
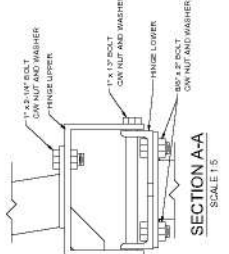
TASEKO RIVER AT OUTLET OF TASEKO LAKES BRITISH COLUMBIA

Project No: 08MA003
Revision: 01
Date: 2022-03-01
Scale: 1:100

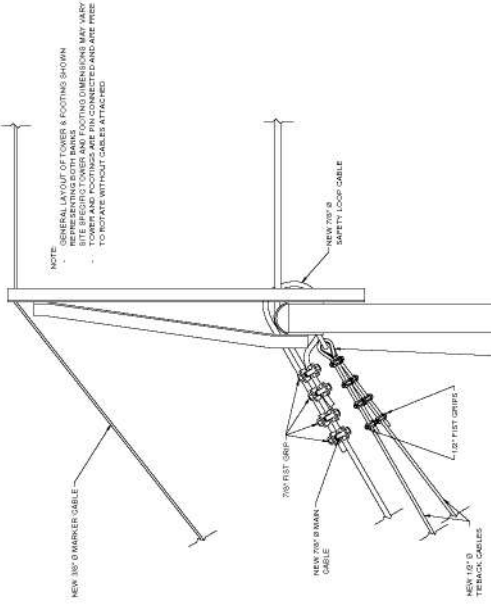
ASSET REMOVAL AND INSTALLATION PLAN

2022-03 DWG-02 0

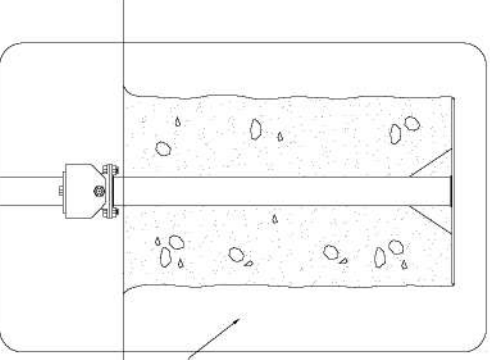
FOR BIDDING PURPOSES
 NOTES:
 - ALL DIMENSIONS IN MILLIMETERS
 - CONTRACTOR TO VERIFY ALL DIMENSIONS PRIOR TO START OF CONSTRUCTION
 - CONTRACTOR RESPONSIBLE FOR REPLACING DAMAGED PARTS
 - PROVIDE ALL WORK EQUIPMENT AND MATERIALS
 - CABLEWAY AS INTENDED IN THIS PROJECT



SOIL FOOTING ARRANGEMENT
SIDE VIEW
 SCALE 1:5

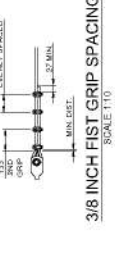
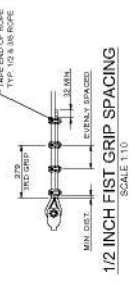
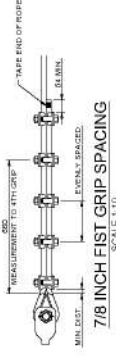


HEAVY DUTY 10\"/>



SEE SOIL FOOTING ARRANGEMENT SIDE VIEW FOR DIMENSIONED FOOTING LAYOUT

TOWER
 SCALE 1:10



NOTE: MEASUREMENTS TO NEXT GRIP ARE TO CENTER OF NEXT GRIP UNLESS OTHERWISE SPECIFIED. TO DETERMINE SPACING BETWEEN ALL GRIPS FOR EACH FIBRE, SUBTRACT MIN. DIST. FROM MEASUREMENT TO NEXT GRIP AND DIVIDE BY TOTAL NUMBER OF CLAMPS MINUS ONE (EVEN SPACING).

Item	Quantity	Unit	Notes
1	1	PIECE	STEEL PLATE FOOTING (125x125x100)
2	1	PIECE	EXISTING CIRCULAR PIPE FRAME
3	1	PIECE	FINELY TAMPERED SOIL
4	1	PIECE	AND REINFORCING BASE PLATE

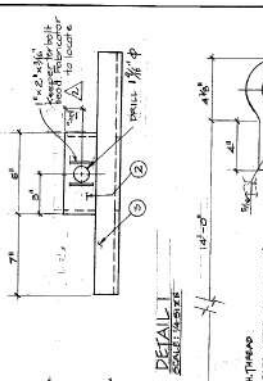
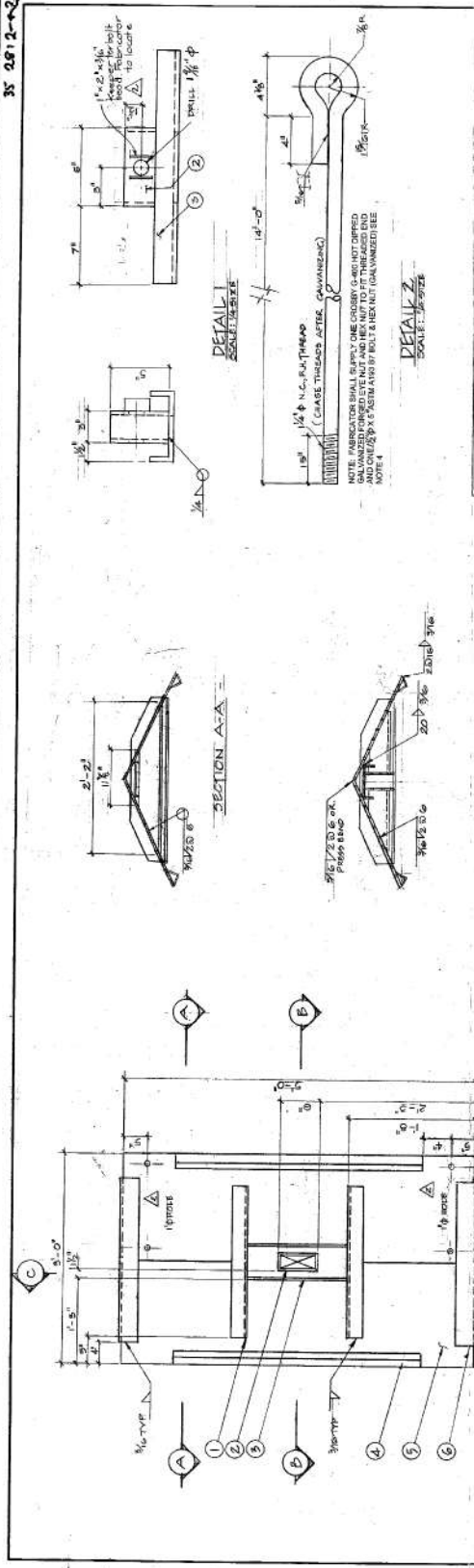
CABLEWAY UPGRADES & REPAIRS
TASEKO RIVER 08MMA003

TASEKO RIVER AT OUTLET OF TASEKO LAKES BRITISH COLUMBIA

Project No.	08MMA003
Revision	0
Date	2022-03
Drawn by	
Checked by	
Scale	AS SHOWN

FOR BIDDING PURPOSES
 NOTES:
 ANCHOR BOWWARE GAME AS SHOWN IN THIS DRAWING AND ANCHORS TO BE INSTALLED.

35-2812-R3
 35-2812-R2



NOTE: ALL PARTS TO BE GALVANIZED AFTER FABRICATION.
 ANCHOR TO BE GALVANIZED AFTER FABRICATION.
 ALL WELDS TO USE E70XX ELECTRODES.
 FOR 100% OF BOLT CONNECTOR (1/2" x 1/2") FOR 100% OF BOLT.



ITEM	QUANTITY	DESCRIPTION
1	2	3/16" x 3/16" x 1/2" ANGLE 21'-21" LONG
2	1	2" x 2" x 1/4" ANGLE 1'-0" LONG
3	1	2" x 2" x 1/4" ANGLE 1'-0" LONG
4	2	3/8" x 1/2" x 1/4" ANGLE 1'-0" LONG
5	2	3/8" x 1/2" x 1/4" ANGLE 1'-0" LONG
6	1	1/2" x 1/2" x 1/4" ANGLE 1'-0" LONG
7	1	1/2" x 1/2" x 1/4" ANGLE 1'-0" LONG
8	1	1/2" x 1/2" x 1/4" ANGLE 1'-0" LONG

- GENERAL NOTES:
 1. ALL PARTS TO BE GALVANIZED AFTER FABRICATION.
 2. ANCHOR TO BE GALVANIZED AFTER FABRICATION.
 3. ALL WELDS TO USE E70XX ELECTRODES.
 4. FOR 100% OF BOLT CONNECTOR (1/2" x 1/2") FOR 100% OF BOLT.

NO.	DATE	BY	CHKD.	APP.	REVISIONS
1					ISSUED FOR BIDDING
2					REVISED PER COMMENTS
3					REVISED PER COMMENTS
4					REVISED PER COMMENTS
5					REVISED PER COMMENTS
6					REVISED PER COMMENTS
7					REVISED PER COMMENTS
8					REVISED PER COMMENTS
9					REVISED PER COMMENTS
10					REVISED PER COMMENTS

DEPT. OF THE ENVIRONMENT
 WATER BERRY OF CANADA, VANCOUVER, B.C.
 STEEL ANCHOR PLATE
 CABLEWAYS
 FABRICATION DETAILS

2012-R3

FOR BIDDING PURPOSES

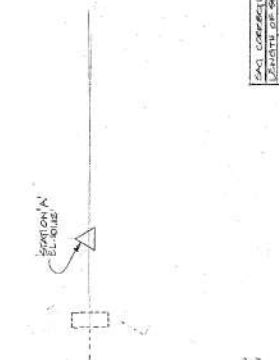
 NOTES:

 1. THIS DRAWING IS NOT TO BE USED TO

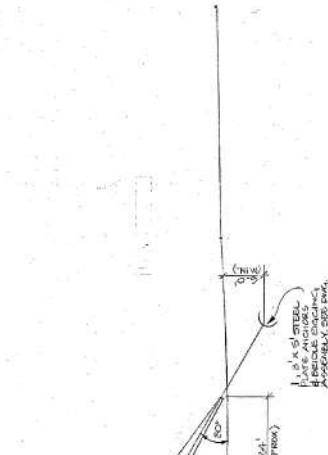
 2. THIS DRAWING IS SOLELY FOR BIDDING INFORMATION

SAG CORRECTION FOR TEMPERATURE

LENGTH OF SPAN	TEMPERATURE	SAG CORRECTION
100'	15.0°C	115.8 mm
100'	15.5°C	115.7 mm
100'	16.0°C	115.6 mm
100'	16.5°C	115.5 mm



1. LENGTH OF SPAN = 100.00'
2. MEAN ELEVATION = 115.7'
3. ALL CANT WAREHOUSE CABLES TO BE PLACED AT EQUAL INTERVALS ACROSS WAREHOUSE CABLE.



AS BUILT

DATE	BY	CHKD	APP'D
10/10/20
11/10/20
12/10/20

DATE	BY	CHKD	APP'D	REVISIONS
10/10/20
11/10/20
12/10/20

DEPT. OF THE ENVIRONMENT
 WATER SERVICE OF CANADA, VANCOUVER, B.C.
**TASEKO RIVER AT
 OUTLET TO TASEKO
 LAKE,
 CABLEWAY**

DRAWING NO. 2022-03
 SHEET NO. 01 OF 02
 PROJECT NO. 2022-03-01

2705-1

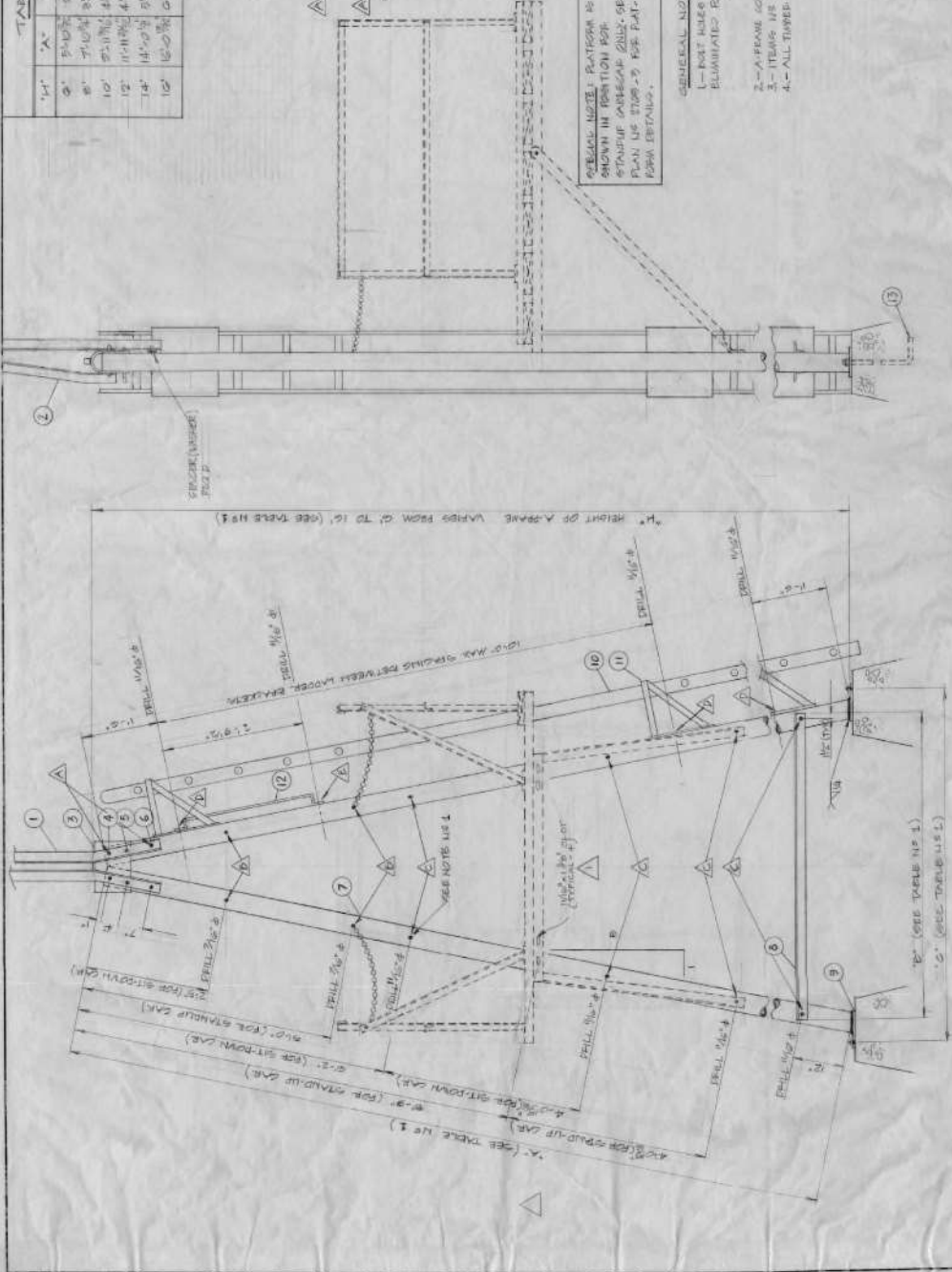
FOR BIDDING PURPOSES

TABLE NO. 1

14'	A	B	C	REMARKS
0'	5'-0"	5'-0"	4'-0"	NO PLATFORM REQ'D
0'	5'-0"	5'-0"	4'-0"	NO PLATFORM REQ'D
10'	5'-0"	5'-0"	4'-0"	NO PLATFORM REQ'D
12'	11'-0"	4'-0"	5'-0"	NO PLATFORM REQ'D
14'	14'-0"	5'-0"	5'-0"	NO PLATFORM REQ'D
16'	16'-0"	5'-0"	7'-0"	NO PLATFORM REQ'D

BILL OF MATERIALS

ITEM QUANTITY	DESCRIPTION
1	ALUMINUM ANGLE 4" X 4" X 1/8" (SEE PLAN 2206-2)
2	ALUMINUM ANGLE 4" X 4" X 1/8" (SEE PLAN 2206-2)
3	SADDLE AND TIE B.
4	100' X 11' H.G. X 1/8" LONG
5	U-BOLT
6	800' X 11' H.G. X 1/8" LONG
7	4" X 4" X 1/8" (LENGTH IS DIMENSION 'A')
8	3" X 3" X 1/8" (LENGTH IS DIMENSION 'B')
9	RODTYPE B
10	ALUMINUM LATER 'SEATHERITE' 4" X 4"
11	ALUMINUM LATER 'SEATHERITE' 4" X 4"
12	1" CAR. HOOP ASSEMBLY
13	ALUMINUM BELLS



DEPT. OF THE ENVIRONMENT
WATER SURVEY OF CANADA, VANCOUVER, B.C.

PIPE FRAME ASSEMBLY
ASSEMBLY TO SIXTEEN FT.
GENERAL ASSEMBLY

DATE: 11/15/88
BY: J. J. J. J.

REVISIONS

No.	Description	Date
1	ISSUE FOR BIDDING PURPOSES	11/15/88

REFERENCE

Doc No.	Title
2205-1	PIPE FRAME DETAILS
2206-1	PIPE FRAME PLATFORM