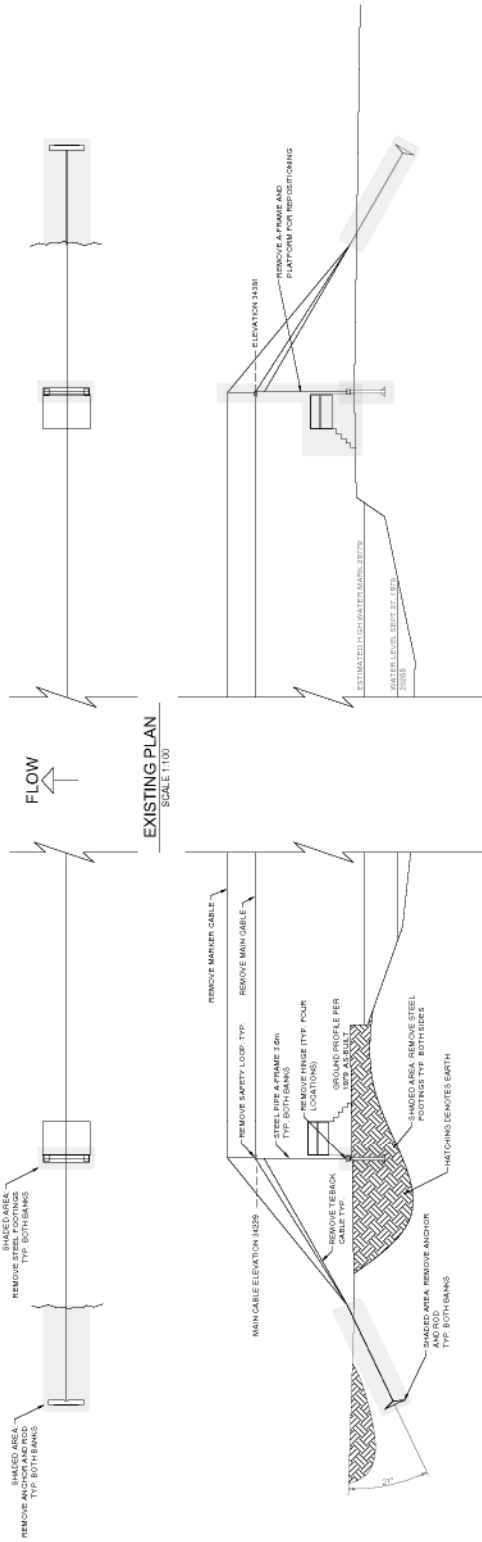




**ASSET REMOVAL**



**EXISTING PLAN**  
SCALE 1:100

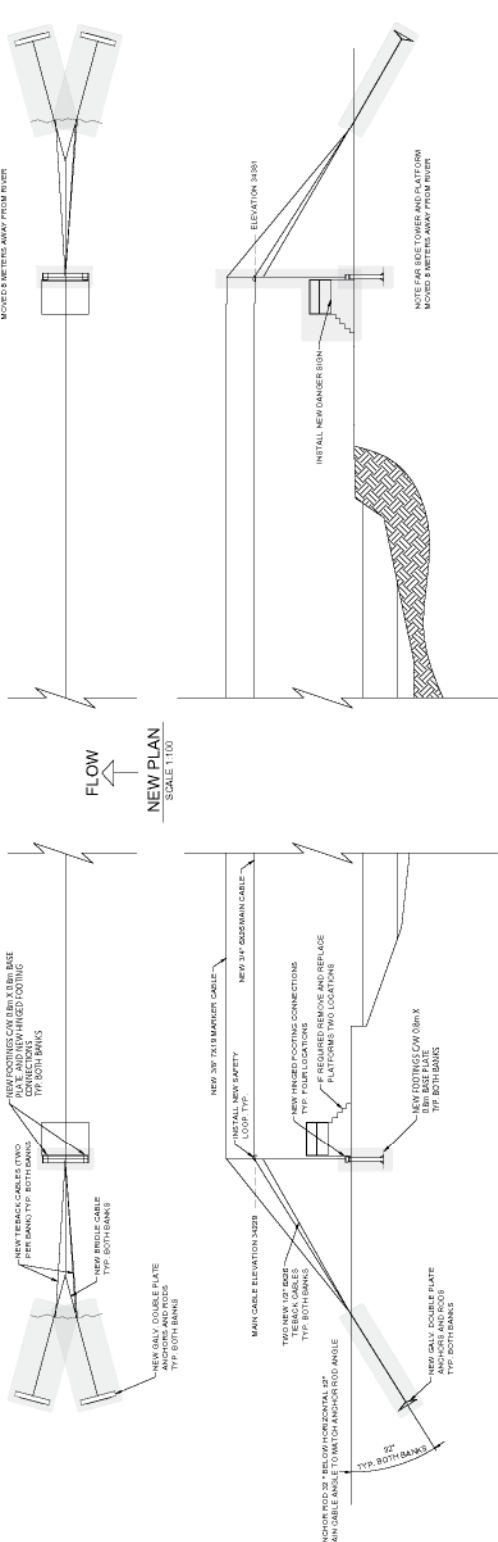
**EXISTING PROFILE**  
SCALE 1:100

- FOR BIDDING PURPOSES**
- NOTE: REMOVE MAIN CABLE AND SAFETY LOOPS
  - REMOVE MAIN CABLE
  - REMOVE TEAROUTS
  - REMOVE ANCHOR PLATES AND RODS UNDERNEATH TOWERS (FOUR FOOTINGS TOTAL)
  - INSTALL NEW MAIN CABLE INCLUDING HARDWARE AND SAFETY
  - INSTALL NEW MARKER CABLE INCLUDING HARDWARE
  - REMOVE AND REINSTALL MARKER CABLE PER BANK INCLUDING HARDWARE AND RODS PER BANK
  - INSTALL NEW BRIDLE SYSTEM BOTH
  - INSTALL NEW FOOTINGS WITH NEW HINGES ON BOTH BANKS
  - REMOVE ANCHOR PLATES AND RODS
  - REMOVE AND REINSTALL
  - REMOVE AND REINSTALL FALSE SIDE
  - REMOVE AND REINSTALL PLATFORM FROM EXISTING POSITION AWAY FROM CREEK
  - REMOVE FROM EXISTING MARKER CABLE AND RE-INSTALL ON NEW MARKER CABLE ALL MARKER CONES
  - SET MAIN AND MARKER CABLE SAGS
- SEE STATEMENT OF WORK FOR FULL DESCRIPTION OF WORKS REQUIRED

**BC Hydro**  
Water Utility  
Renewable Hydroelectric Program  
Project 2022-04

Project Name	CABLEWAY UPGRADES & REPAIRS RASPBERRY CREEK 10CD0003
Client	RASPBERRY CREEK NEAR THE MOUTH BRITISH COLUMBIA
Contract No.	
Contract Date	
Contract Value	
Contract Type	
Contract Status	
Contract Description	
Contract Location	
Contract Start Date	
Contract End Date	
Contract Manager	
Contract Engineer	
Contract Designer	
Contract Checker	
Contract Approver	
Contract Date	2022-04
Contract Version	0
Contract Status	DWG-02

**NEW PLAN**  
SCALE 1:100



**ASSET INSTALLATION**

NOTE: FOR ALL TOWER AND PLATFORM MOVES & RELOCATIONS FROM RIVER

NOTE: FAR SIDE TOWER AND PLATFORM MOVED 5 METERS AWAY FROM RIVER

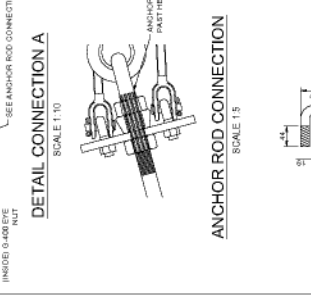
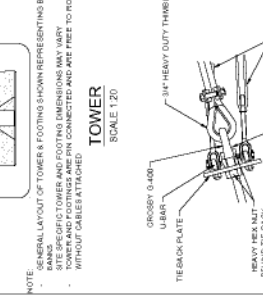
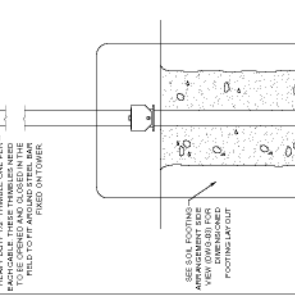
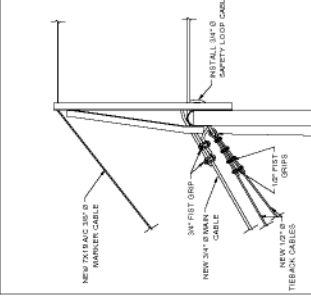
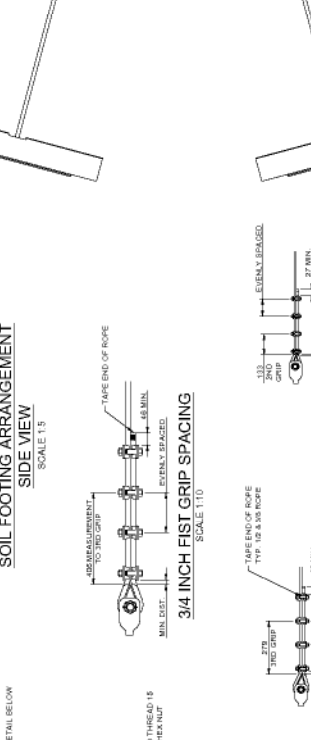
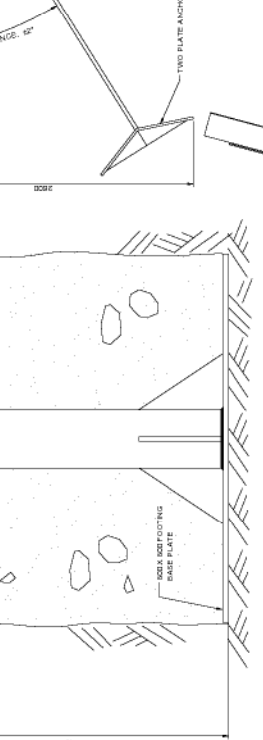
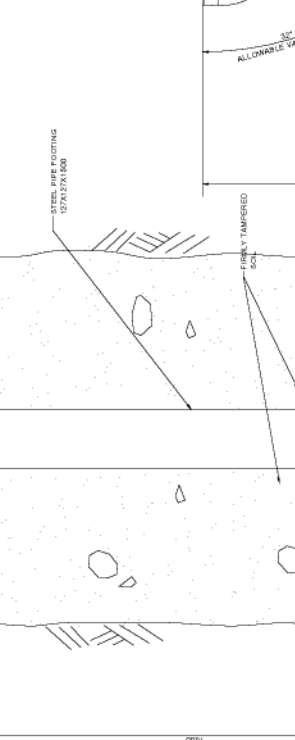
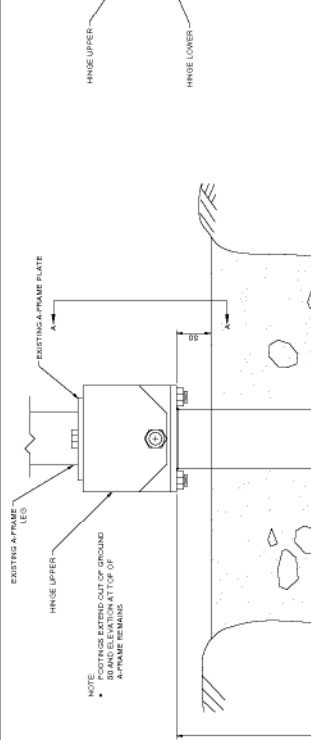
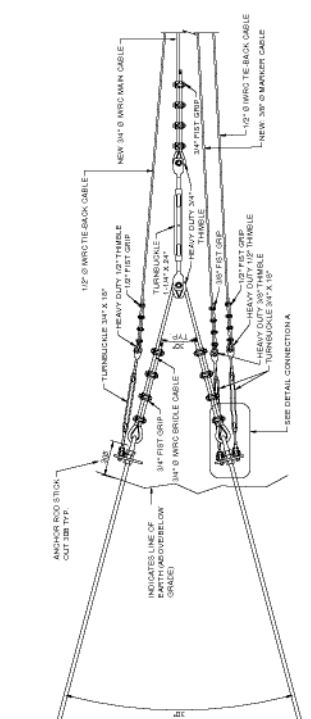
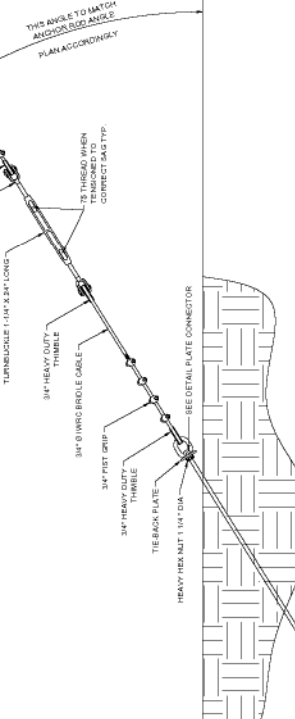
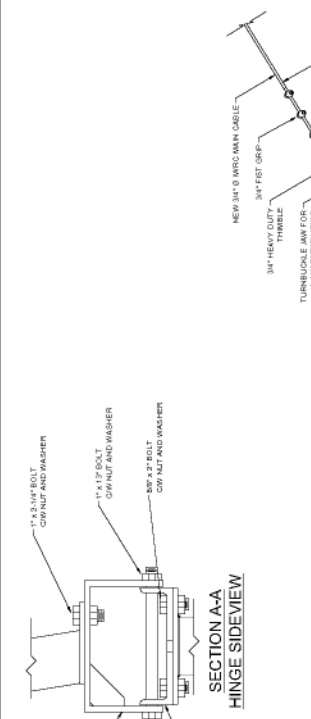
**FOR BIDDING PURPOSES**
  
 NOTE: ALL DIMENSIONS IN MILLIMETERS UNLESS STATED OTHERWISE. DIMENSIONS PRIOR TO START OF WORK. ALL PLATE THIMBLE AROUND 5/8" Ø 3/4" NUT. DIMENSIONS FOR SPARE PARTS REQUIRED TO REPLACE DAMAGED DURING PROJECT. CONTRACTOR RESPONSIBLE TO VERIFY ALL DIMENSIONS AND MATERIALS REQUIRED TO MAKE FUNCTIONAL CABLEWAY AS INTENDED IN THIS PROJECT.

**CABLEWAY UPGRADES & REPAIRS**
  
**RASPBERRY CREEK**
  
**10C0003**

**RASPBERRY CREEK NEAR THE MOUTH**
  
**BRITISH COLUMBIA**

**PLATE ANCHOR AND ROPE ATTACHMENTS WITH DETAILS**

Project No: 10C0003  
 Revision: 0  
 Date: 2022-03  
 DWG-03



NOTE: GENERAL LAYOUT OF TOWERS & FOOTINGS SHOWN REPRESENTING BOTH BANKS. DIMENSIONS OF TOWERS AND FOOTINGS DIMENSIONS MAY VARY. TOWERS AND FOOTINGS ARE TO BE CONNECTED AND ARE FREE TO ROTATE WITHOUT CABLES ATTACHED.

NOTE: MEASUREMENTS TO HINGE ARE TO CONFORM WITH DIMENSIONS OF AS-BUILT SPECIFICATIONS. NOTE: MEASUREMENTS TO HINGE ARE TO CONFORM WITH DIMENSIONS OF AS-BUILT SPECIFICATIONS. DIVIDE BY TOTAL NUMBER OF CLAMPS UNLESS OTHERWISE SPECIFIED.

NOTE: MEASUREMENTS TO HINGE ARE TO CONFORM WITH DIMENSIONS OF AS-BUILT SPECIFICATIONS. NOTE: MEASUREMENTS TO HINGE ARE TO CONFORM WITH DIMENSIONS OF AS-BUILT SPECIFICATIONS. DIVIDE BY TOTAL NUMBER OF CLAMPS UNLESS OTHERWISE SPECIFIED.

NOTE: MEASUREMENTS TO HINGE ARE TO CONFORM WITH DIMENSIONS OF AS-BUILT SPECIFICATIONS. NOTE: MEASUREMENTS TO HINGE ARE TO CONFORM WITH DIMENSIONS OF AS-BUILT SPECIFICATIONS. DIVIDE BY TOTAL NUMBER OF CLAMPS UNLESS OTHERWISE SPECIFIED.

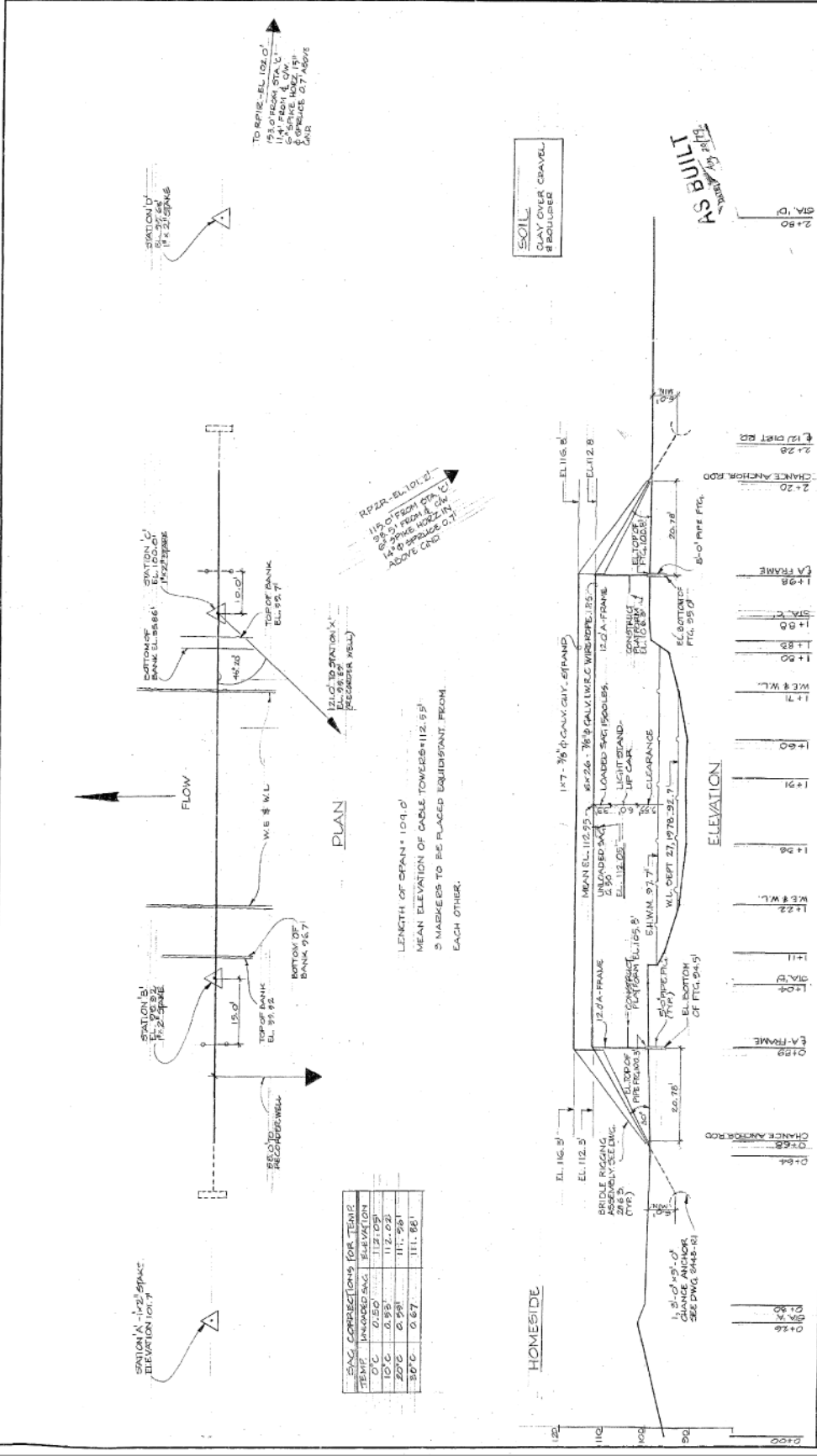
NOTE: MEASUREMENTS TO HINGE ARE TO CONFORM WITH DIMENSIONS OF AS-BUILT SPECIFICATIONS. NOTE: MEASUREMENTS TO HINGE ARE TO CONFORM WITH DIMENSIONS OF AS-BUILT SPECIFICATIONS. DIVIDE BY TOTAL NUMBER OF CLAMPS UNLESS OTHERWISE SPECIFIED.



RASPBERRY RIVER  
BELOW ALASKA HIGHWAY  
CABLEWAY SITE

**FOR BIDDING PURPOSES**

NOTES:  
1. RESULT IS NOT TO BE USED TO DETERMINE CURRENT SITUATION IS SOLELY FOR BIDDING INFORMATION



DATE	BY	CHKD.	APP.	REVISIONS
1+26				
1+27				
1+28				
1+29				
1+30				
1+31				
1+32				
1+33				
1+34				
1+35				
1+36				
1+37				
1+38				
1+39				
1+40				
1+41				
1+42				
1+43				
1+44				
1+45				
1+46				
1+47				
1+48				
1+49				
1+50				
1+51				
1+52				
1+53				
1+54				
1+55				
1+56				
1+57				
1+58				
1+59				
1+60				
1+61				
1+62				
1+63				
1+64				
1+65				
1+66				
1+67				
1+68				
1+69				
1+70				
1+71				
1+72				
1+73				
1+74				
1+75				
1+76				
1+77				
1+78				
1+79				
1+80				
1+81				
1+82				
1+83				
1+84				
1+85				
1+86				
1+87				
1+88				
1+89				
1+90				
1+91				
1+92				
1+93				
1+94				
1+95				
1+96				
1+97				
1+98				
1+99				
1+100				