

CABLEWAY UPGRADES & REPAIRS

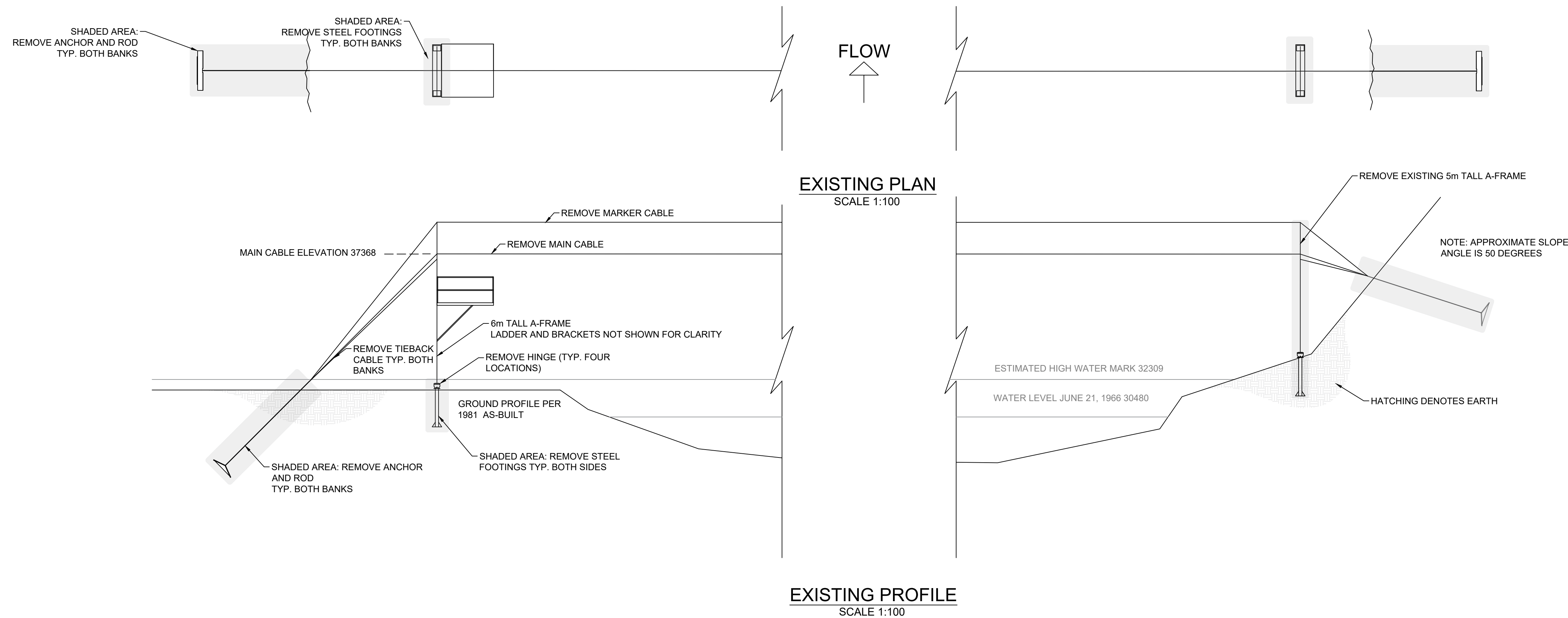
SURPRISE CREEK NEAR THE MOUTH

(08DA005)

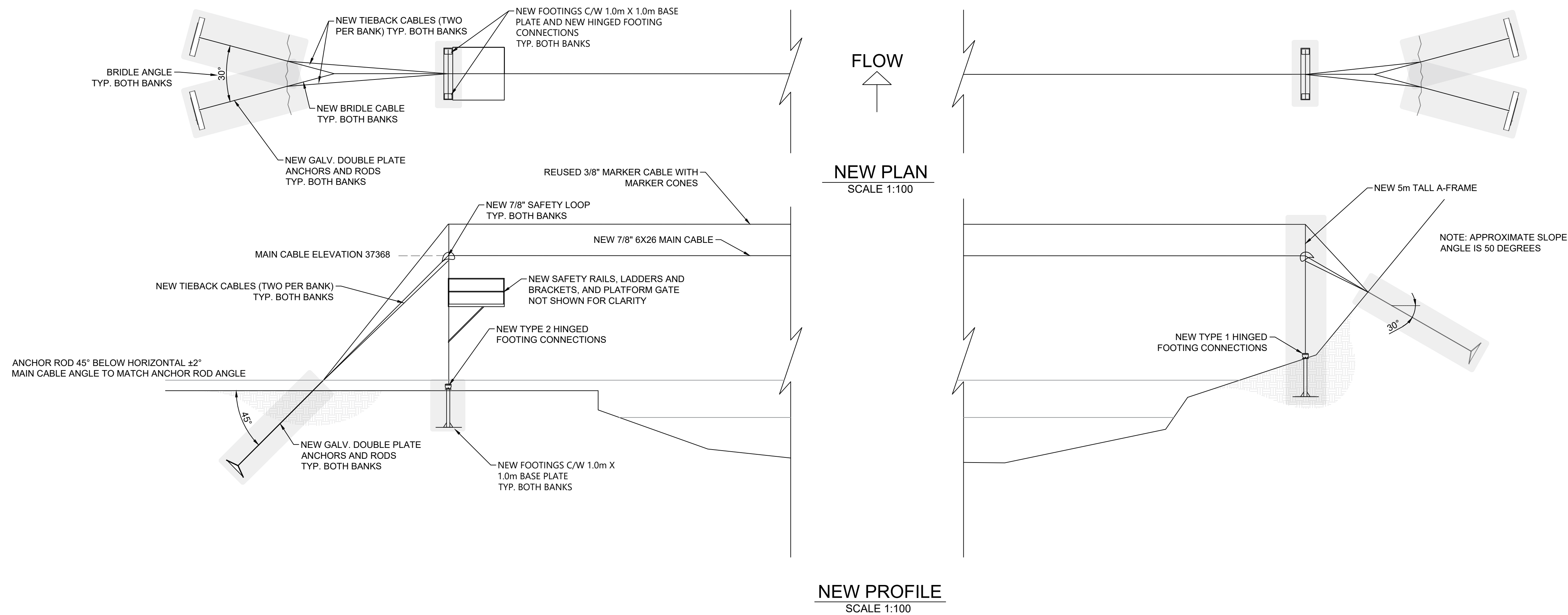
LIST OF DRAWINGS:

- DWG-01: TITLE BLOCK
- DWG-02: ASSET REMOVAL AND INSTALLATION PLAN
- DWG-03: PLATE ANCHOR AND ROPE ATTACHMENTS WITH DETAILS
- DWG-04: STEEL FOOTINGS AND ROPE ATTACHMENTS
- DWG-05: STEEL PLATE ANCHOR DETAILS
- DWG-06: NEW FAR-SIDE HD A-FRAME

ASSET REMOVAL



ASSET INSTALLATION



FOR BIDDING PURPOSES

- NOTES:
- REMOVE MAIN CABLE AND SAFETY LOOPS
- REMOVE TIE-BACK CABLES
- REMOVE ANCHOR PLATES AND RODS
- REMOVE FOOTINGS FROM UNDERNEATH TOWERS (FOUR FOOTINGS TOTAL)
- REMOVE FAR-SIDE A-FRAME
- REMOVE EXISTING SAFETY CHAIN ON HOME-SIDE A-FRAME
- REMOVE EXISTING HOME-SIDE LADDERS AND BRACKETS
-
- INSTALL NEW FAR-SIDE A-FRAME
- INSTALL NEW MAIN CABLE INCLUDING CABLE HARDWARE AND SAFETY LOOPS
- INSTALL NEW MARKER CABLE HARDWARE AND CONES
- INSTALL TWO NEW TIE-BACK CABLES PER BANK INCLUDING CABLE HARDWARE
- INSTALL TWO NEW ANCHOR PLATES AND RODS PER BANK
- INSTALL NEW BRIDLE SYSTEM BOTH BANKS
- INSTALL NEW FOOTINGS WITH NEW HINGES ON BOTH BANKS
- INSTALL DANGER SIGNS ON BOTH BANKS
- INSTALL NEW SAFETY RAILS AND PLATFORM GATE ON HOME-SIDE A-FRAME
- INSTALL NEW HOME-SIDE LADDERS AND BRACKETS
-
- REMOVE FROM EXISTING MARKER CABLE AND RE-INSTALL ON NEW MARKER CABLE ALL MARKER CONES SPACED EVENLY
- SET MAIN AND MARKER CABLE SAGS

SEE STATEMENT OF WORK FOR FULL
DESCRIPTION OF WORKS REQUIRED

CABLE ELEVATIONS TO REMAIN THE SAME
BEFORE AND AFTER REPAIRS

1	ISSUED FOR TENDER	2022-05
Revision	Description	Date
Project	Project	

CABLEWAY UPGRADES &
REPAIRS
SURPRISE CREEK
08DA005

location

Emplacement

SURPRISE CREEK NEAR
THE MOUTH
BRITISH COLUMBIA

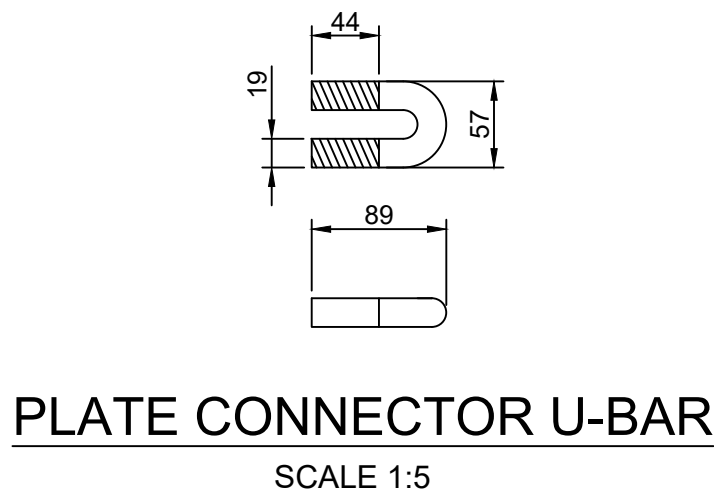
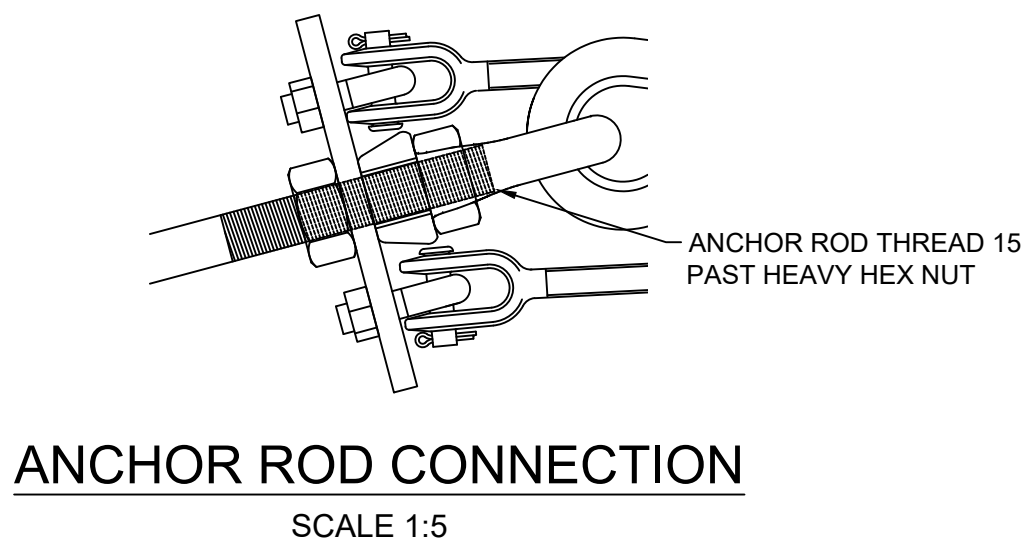
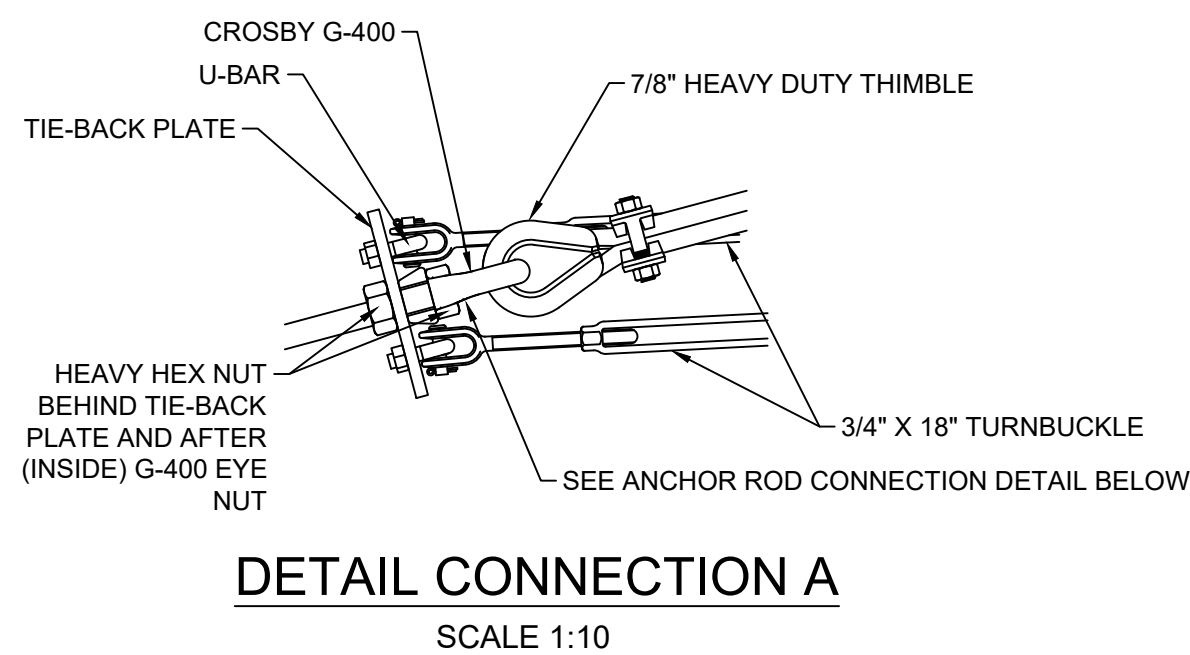
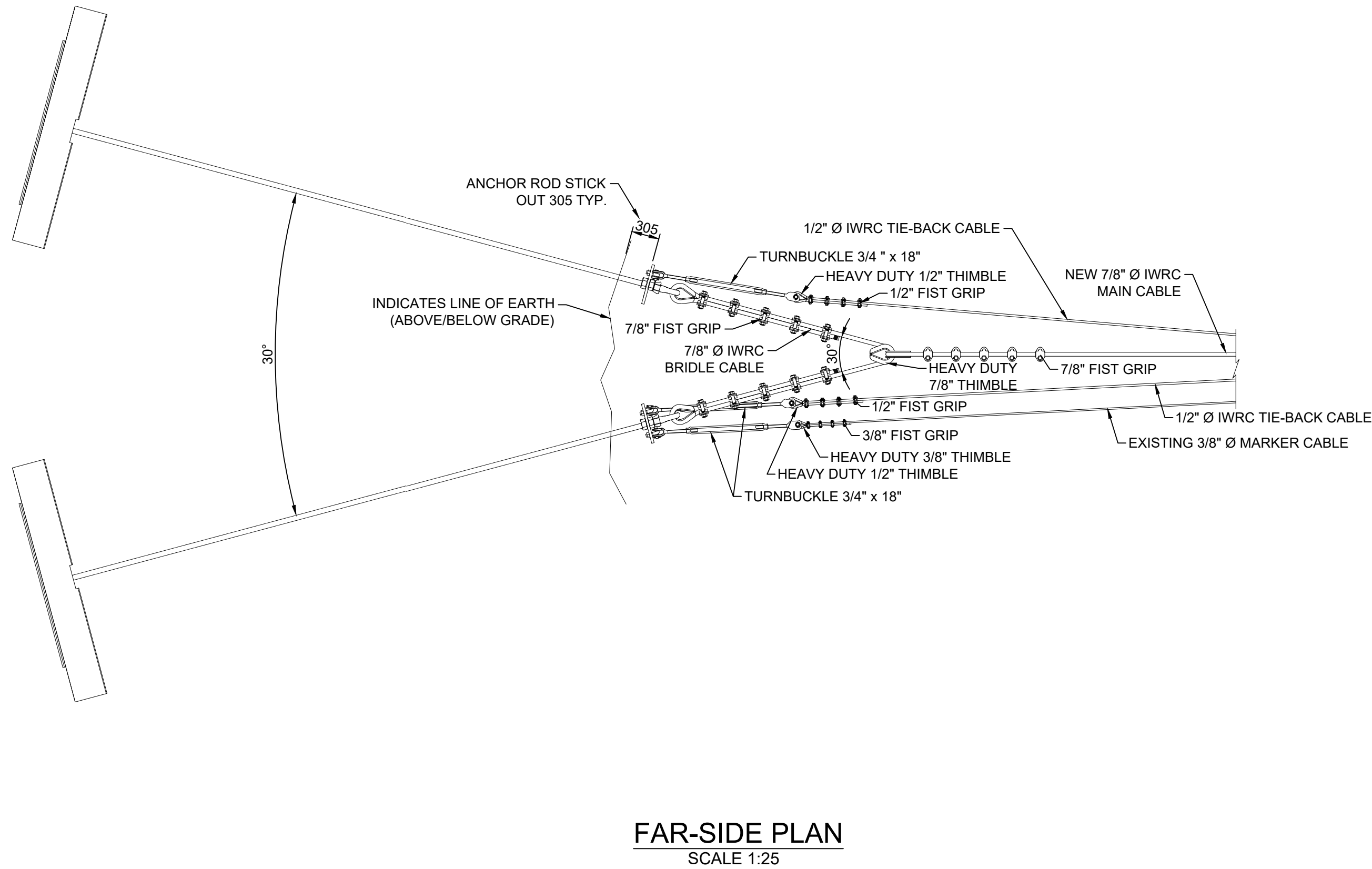
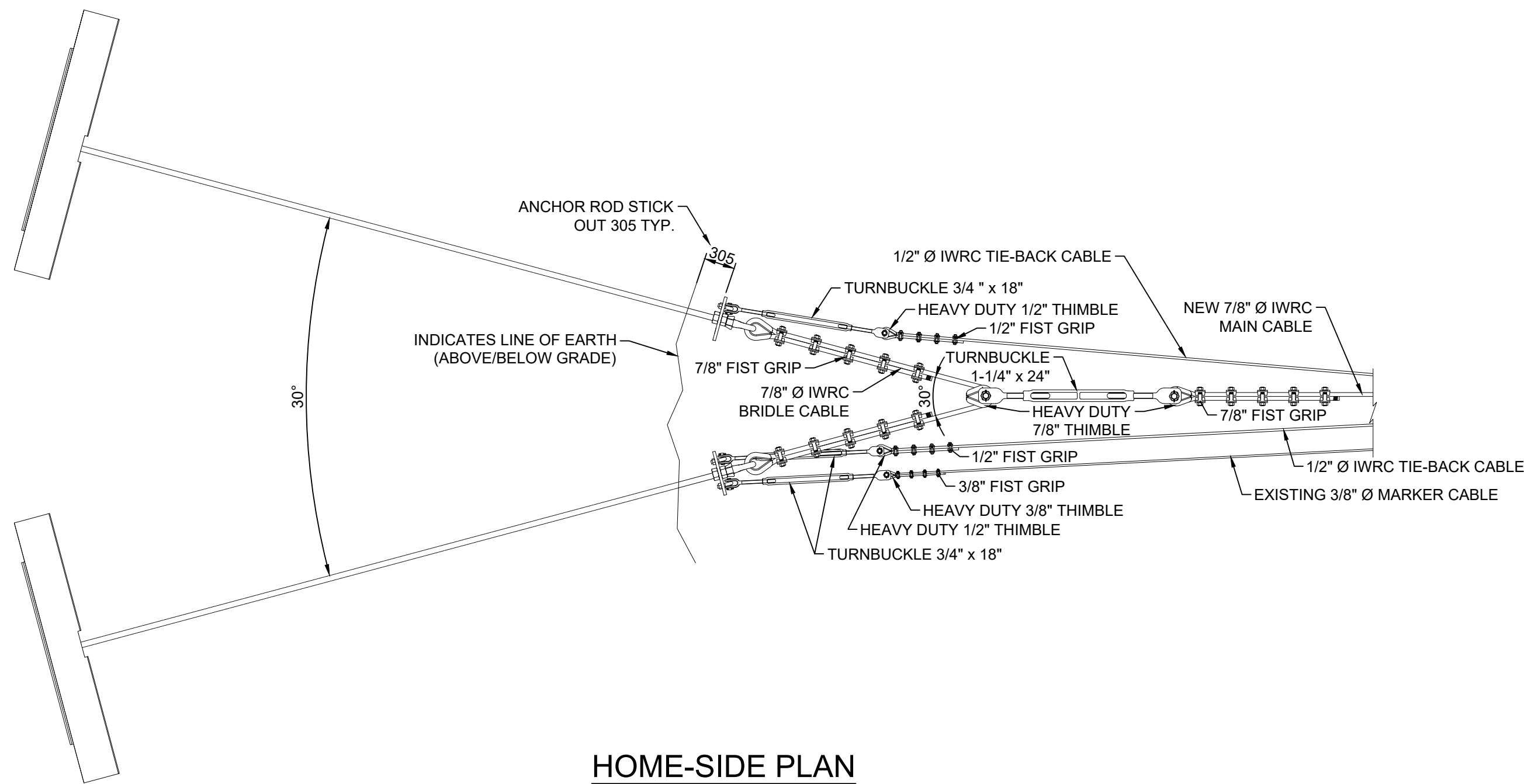
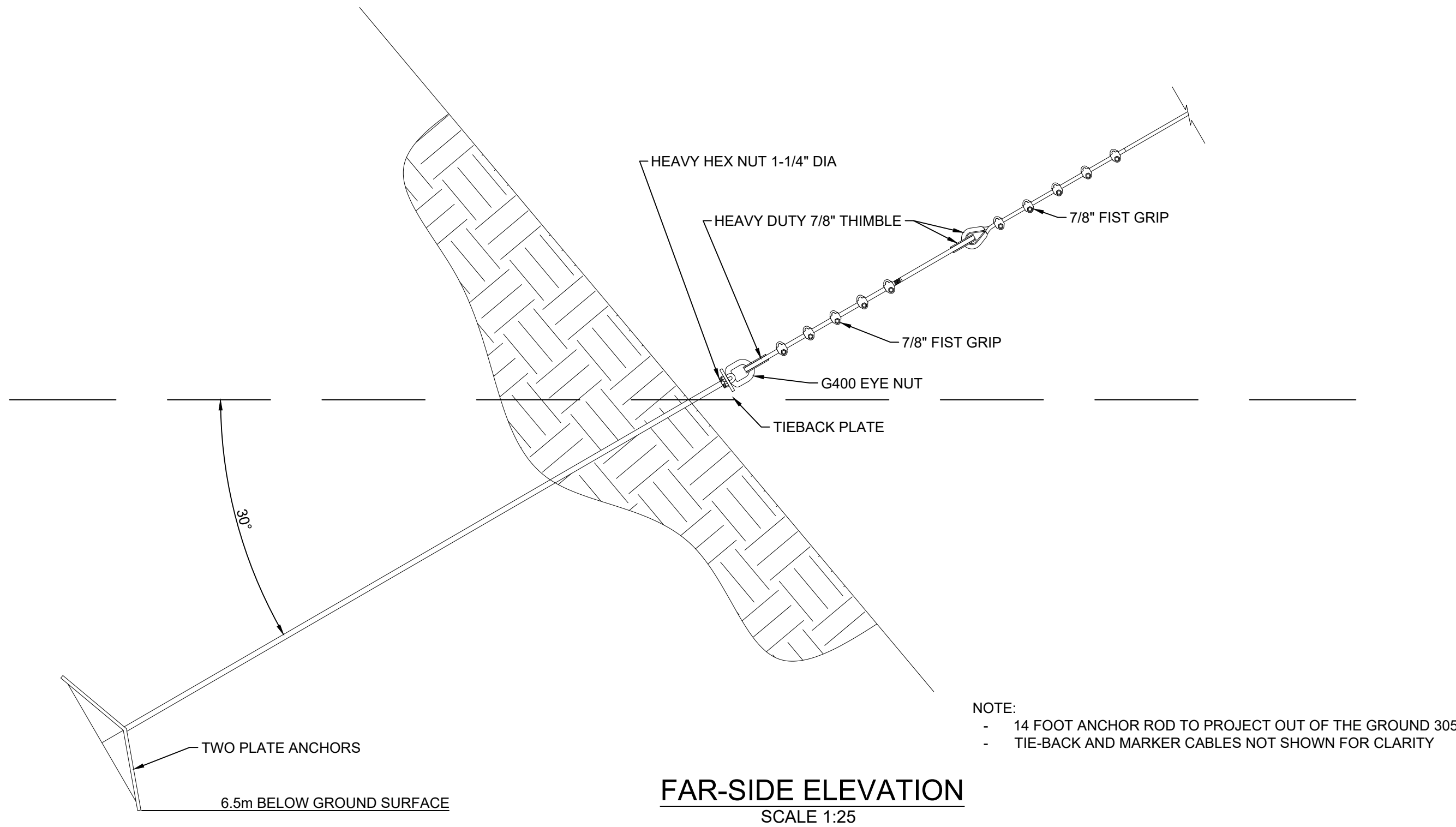
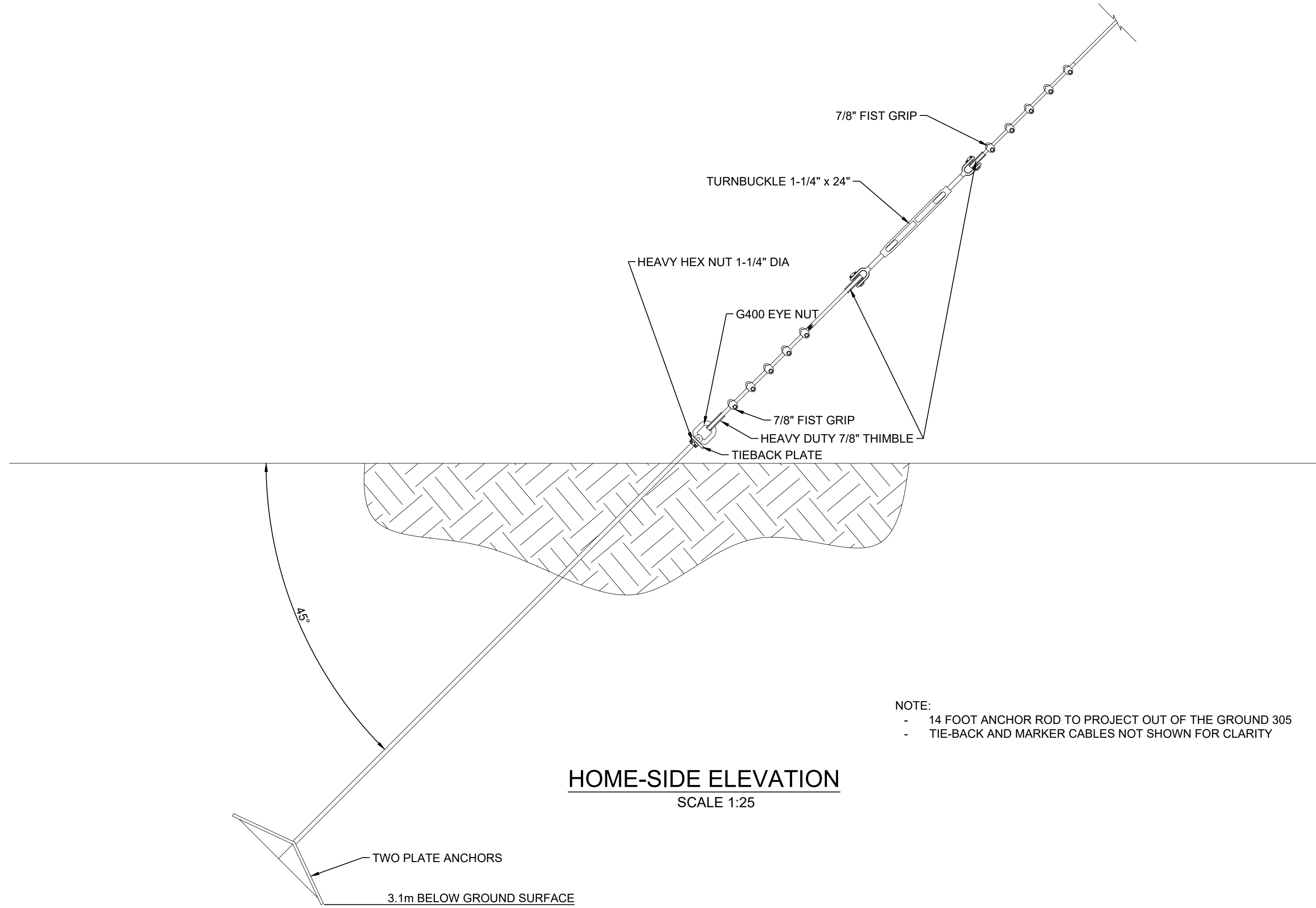
Designed by ECCC	Conçu par
Drawn by ECCC	Dessiné par
Approved by ECCC	Approuvé par
ECCC Project Manager ECCC	Administrateur de Projets ECCC
Drawing title	Titre du dessin

ASSET REMOVAL AND INSTALLATION PLAN

Project no./No. du projet	Drawing no./No. du dessin	Revision no.
2022-07	DWG-02	1

FOR BIDDING PURPOSES

- NOTES:
- ALL DIMENSION IN MILLIMETERS UNLESS STATED OTHERWISE
 - CONTRACTOR TO VERIFY ALL DIMENSIONS PRIOR TO START OF WORK
 - ECCC WILL PLACE THIMBLE AROUND G-400 EYE NUT
 - CONTRACTOR RESPONSIBLE FOR SPARE PARTS REQUIRED TO REPLACE DAMAGED DURING CONSTRUCTION PARTS
 - CONTRACTOR RESPONSIBLE TO PROVIDE ALL WORK/EQUIPMENT REQUIRED TO HAVE FUNCTIONAL CABLEWAY AS INTENDED IN THIS PROJECT
 - ECCC WILL PLACE THIMBLE AROUND G-400 EYE NUT



1	ISSUED FOR TENDER	2022-05
Revision	Description	Date
Project		Projet

CABLEWAY UPGRADES & REPAIRS
SURPRISE CREEK
08DA005

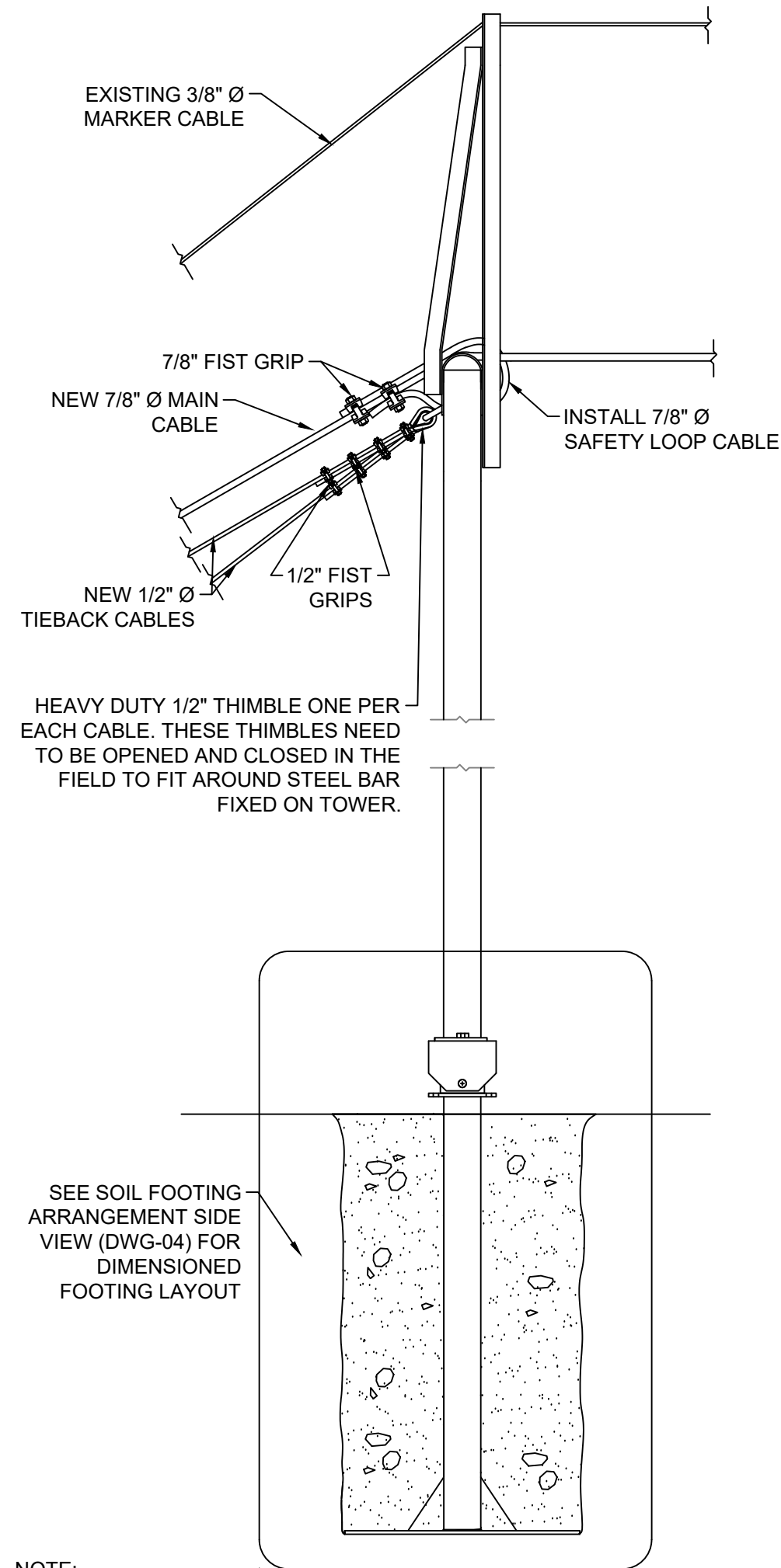
LocationEmplacement

SURPRISE CREEK NEAR THE MOUTH
BRITISH COLUMBIA

Designed by ECCC	Conçu par
Drawn by ECCC	Designé par
Approved by ECCC	Approuvé par
ECCC Project Manager ECCC	Administrateur de Projets ECCC
Drawing title	Titre du dessin

PLATE ANCHOR AND ROPE ATTACHMENTS WITH DETAILS

Project no./No. du projet	Drawing no./No. du dessin	Revision no.
2022-07	DWG-03	1

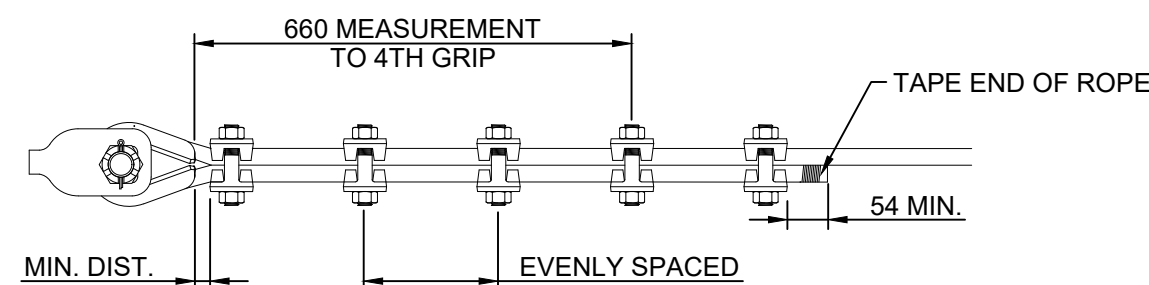


NOTE:

- GENERAL LAYOUT OF TOWER & FOOTING SHOWN REPRESENTING BOTH BANKS
- SITE SPECIFIC TOWER AND FOOTING DIMENSIONS MAY VARY
- TOWER AND FOOTINGS ARE PIN CONNECTED AND ARE FREE TO ROTATE WITHOUT CABLES ATTACHED

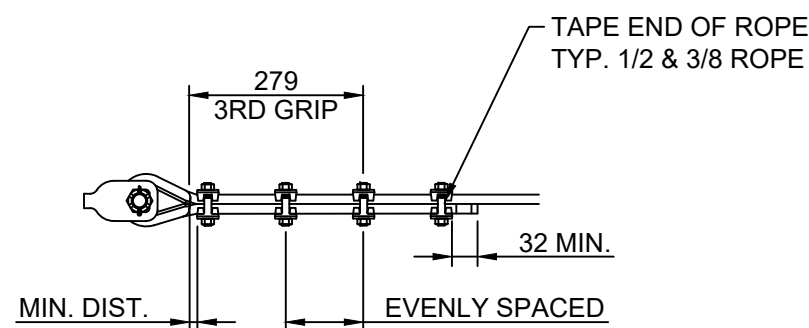
TOWER

SCALE 1:20



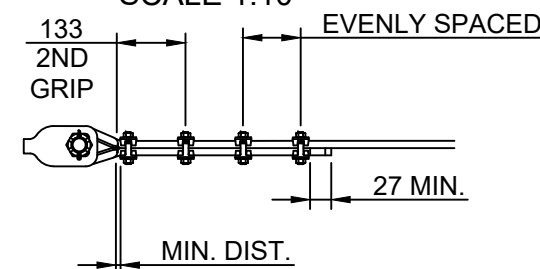
7/8 INCH FIST GRIP SPACING

SCALE 1:10



1/2 INCH FIST GRIP SPACING

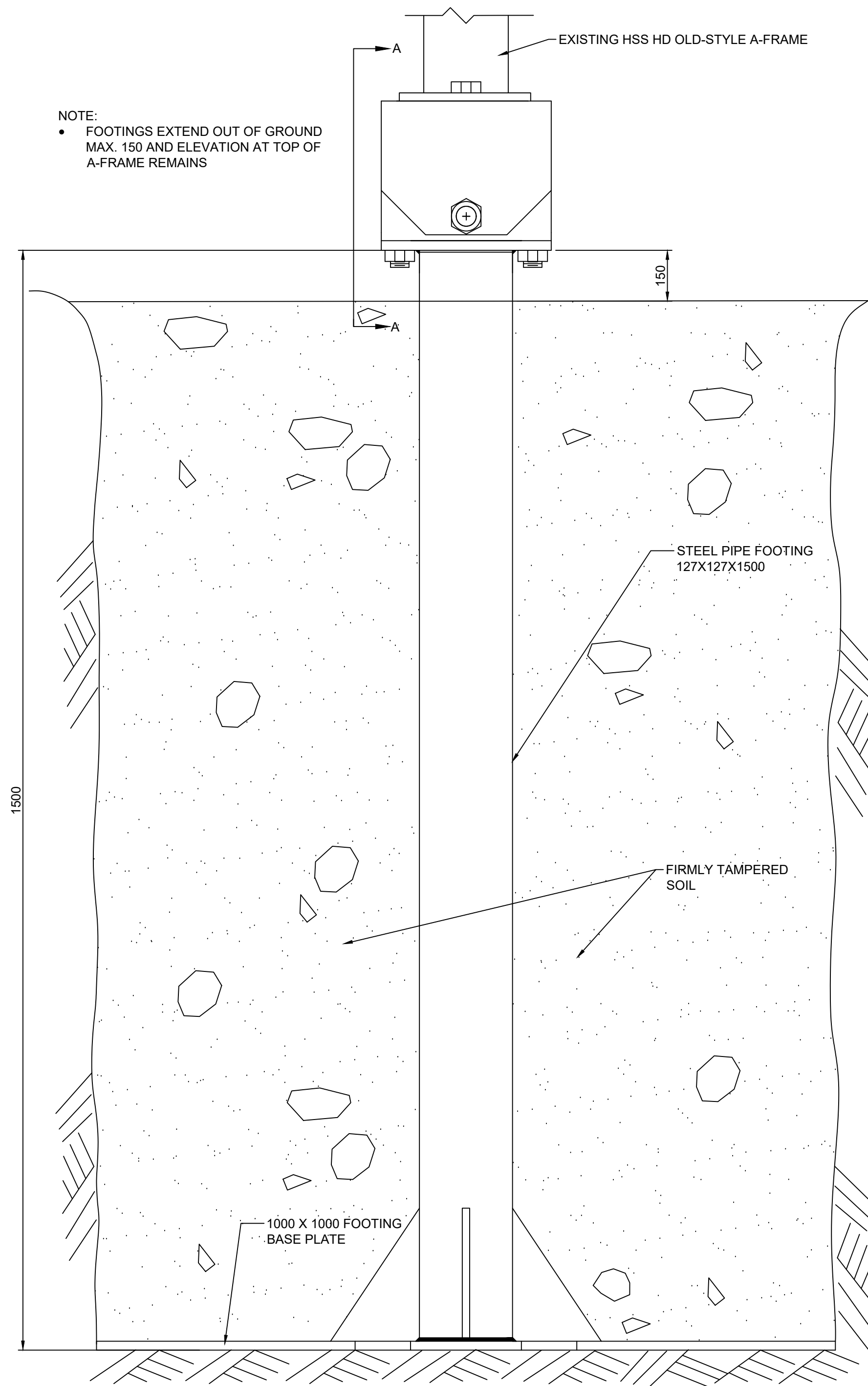
SCALE 1:10



3/8 INCH FIST GRIP SPACING

SCALE 1:10

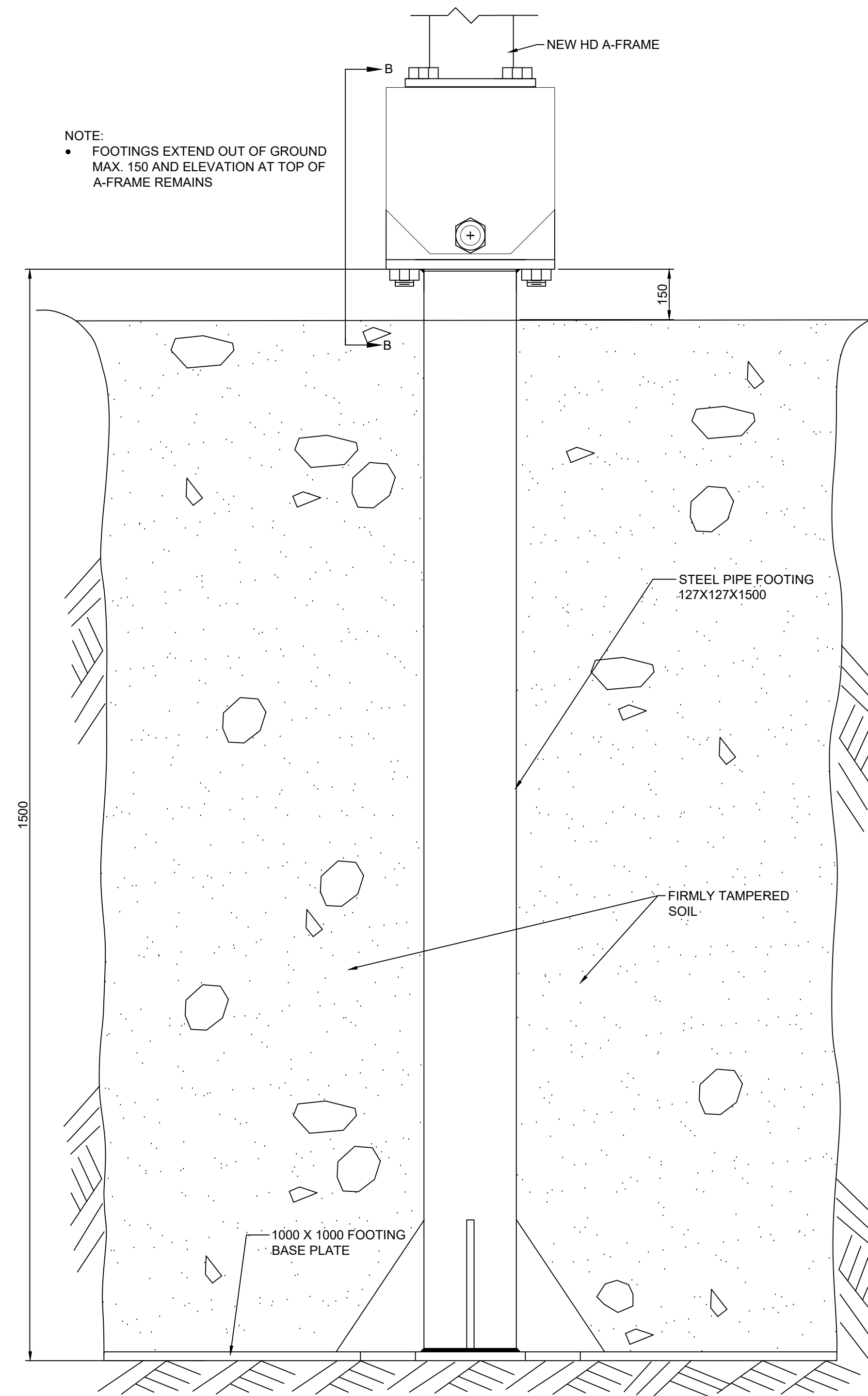
NOTE: MEASUREMENTS TO NTH GRIP ARE TO CONFORM WITH CROSBY CATALOGUE SPECIFICATIONS. TO DETERMINE SPACING BETWEEN ALL GRIPS FOR EACH FIGURE, SUBTRACT MIN.DIST. FROM MEASUREMENT TO NTH GRIP AND DIVIDE BY TOTAL NUMBER OF CLAMPS MINUS ONE (EVEN SPACING)



SOIL FOOTING ARRANGEMENT

HOME-SIDE SIDE VIEW

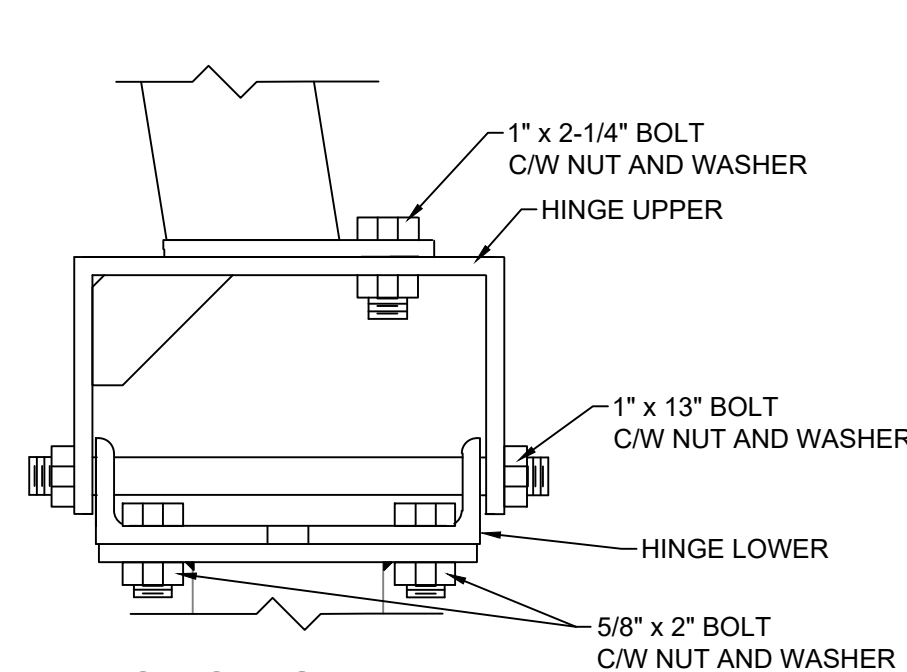
SCALE 1:5



SOIL FOOTING ARRANGEMENT

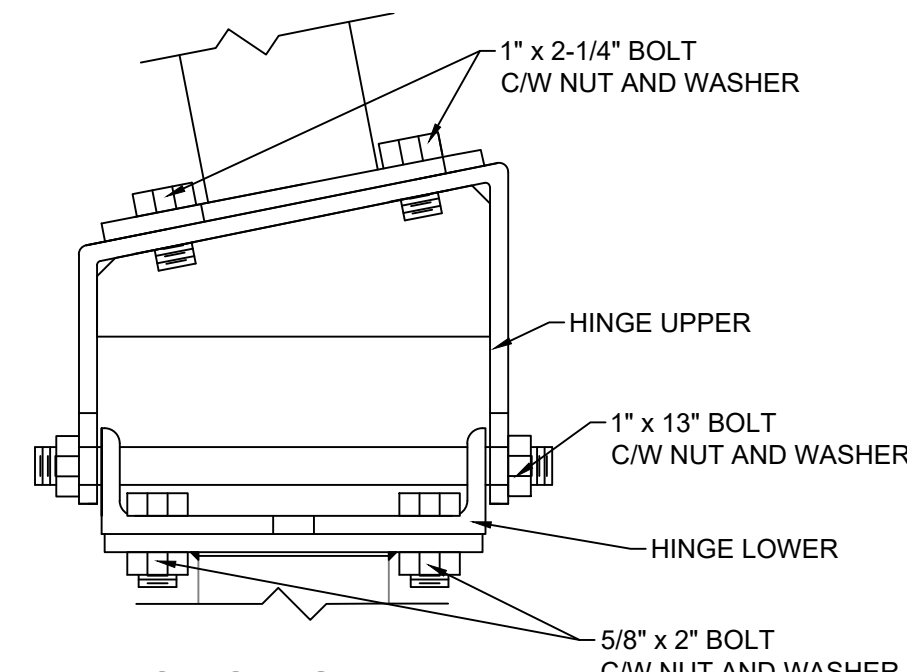
FAR-SIDE SIDE VIEW

SCALE 1:5



SECTION A-A

SCALE 1:5



SECTION B-B

SCALE 1:5

FOR BIDDING PURPOSES

NOTES:

- ALL DIMENSION IN MILLIMETERS UNLESS STATED OTHERWISE
- CONTRACTOR TO VERIFY ALL DIMENSIONS PRIOR TO START OF WORK
- CONTRACTOR RESPONSIBLE FOR SPARE PARTS REQUIRED TO REPLACE DAMAGED DURING CONSTRUCTION PARTS
- CONTRACTOR RESPONSIBLE TO PROVIDE ALL WORK/EQUIPMENT REQUIRED TO HAVE FUNCTIONAL CABLEWAY AS INTENDED IN THIS PROJECT

0 ISSUED FOR TENDER 2022-03

Revision Description Date

Project

CABLEWAY UPGRADES &
REPAIRS
SURPRISE CREEK
08DA005

Location

SURPRISE CREEK NEAR
THE MOUTH
BRITISH COLUMBIA

Designed by

ECCC

Drawn by

ECCC

Approved by

ECCC

ECCC Project Manager

Administrateur de Projets ECCC

Drawing title

STEEL FOOTINGS AND
ROPE ATTACHMENTS

Project no./No. du projet

2022-07

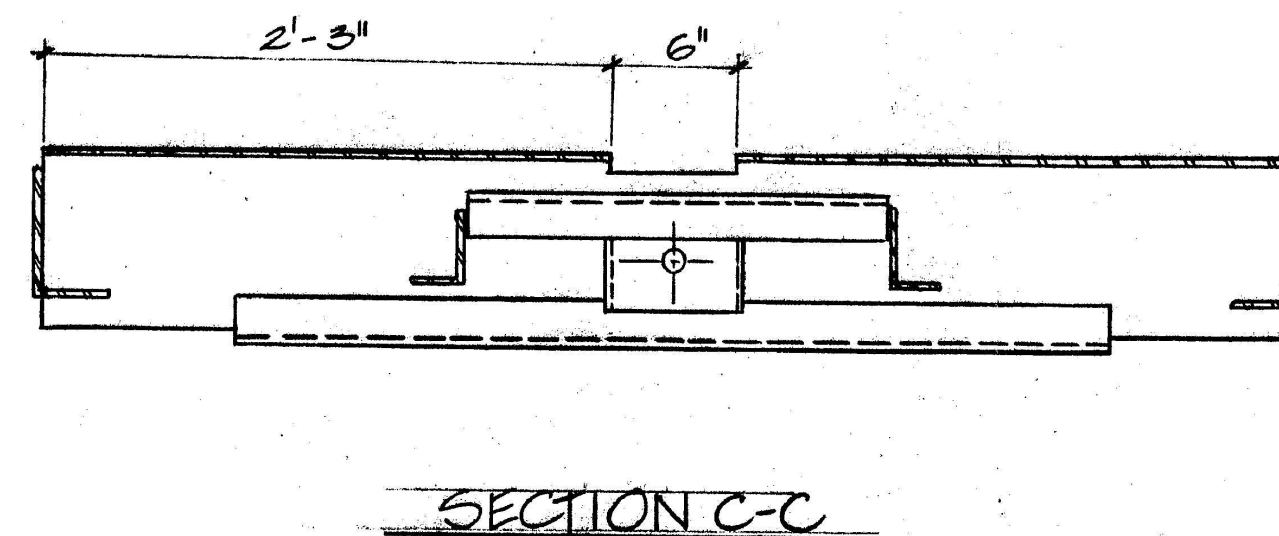
Drawing no./No. du dessin

DWG-04


Revision no.

0

35. 2812 JR2



GENERAL NOTES

1. ALL PARTS TO BE GALVANIZED AFTER FABRICATION.
2. ANCHOR PL TO BE G40.12-44W STEEL, ANCHOR ROD TO BE CSA G40.21-44W  OR EQUIVALENT.
3. ALL WELDS TO USE E70 XX ELECTRODES
4. USE ASTM A193 B7 BOLT CONNECTOR (1 1/2" x 5") FOR ROD TO PL.

Project no./No. du projet	Drawing no./No. du dessin	Revision no.
2022-07	DWG-05	0

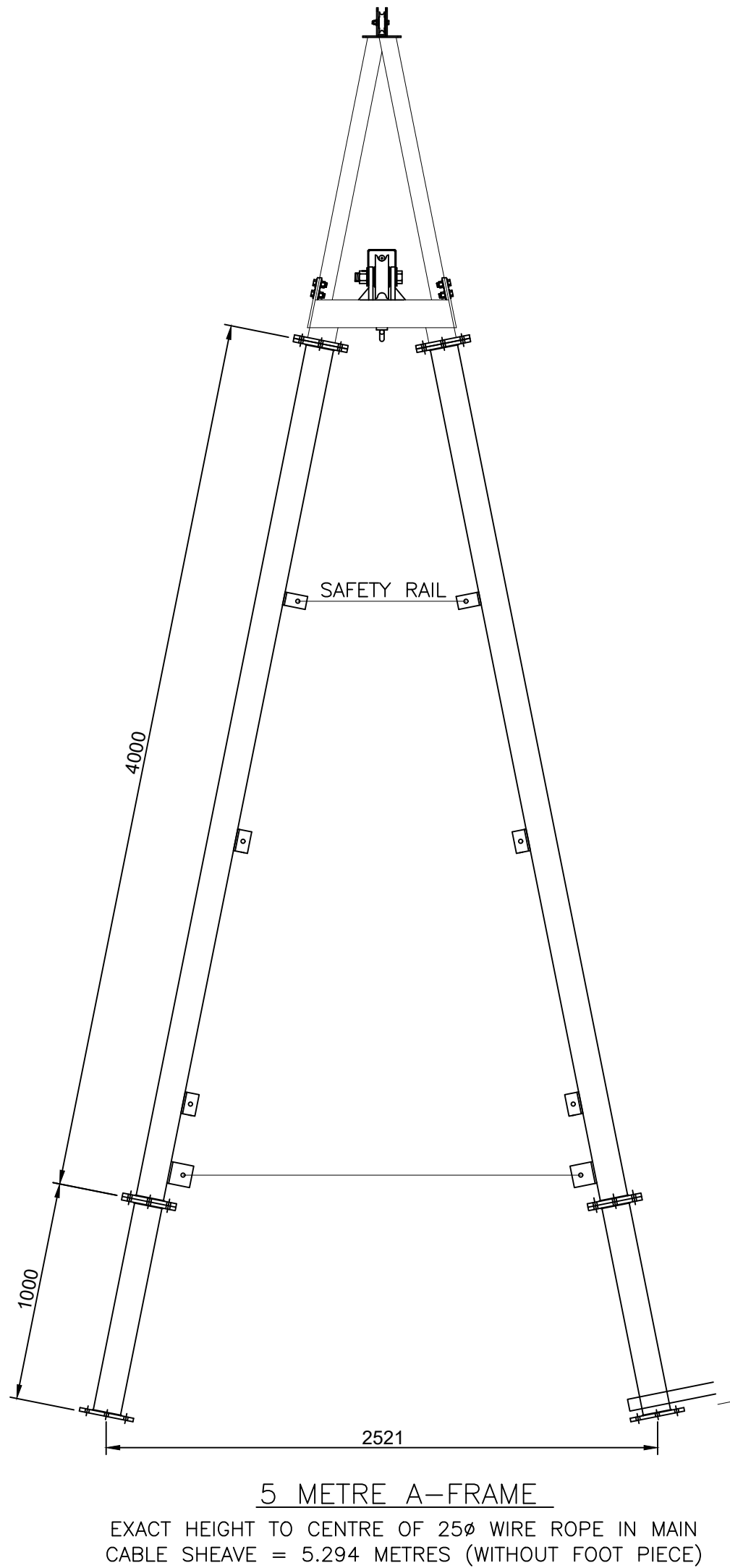
Destroy all prints bearing previous number

FOR BIDDING PURPOSES

0	ISSUED FOR TENDER	2022-03
Revision	Description	Date
Project	Project	
CABLEWAY UPGRADES & REPAIRS SURPRISE CREEK 08DA005		
Location	Emplacement	
SURPRISE CREEK NEAR THE MOUTH BRITISH COLUMBIA		
Designed by ECCC	Conçu par	
Drawn by ECCC	Dessiné par	
Approved by ECCC	Approuvé par	
ECCC Project Manager ECCC	Administrateur de Projets ECCC	
Drawing title	Titre du dessin	
NEW FAR-SIDE HD A-FRAME		
Project no./No. du projet	Drawing no./No. du dessin	Revision no.
2022-07	DWG-06	0

A COMPLETE 5 METRE A-FRAME ASSEMBLY CONSISTS OF THE FOLLOWING:			
QTY	DESCRIPTION	DWG No.	SUPPLIER
1	A-FRAME TOP ASSEMBLY	3136-4	CONTRACTOR
1	4 METRE LEG ASSEMBLY	3136-5	CONTRACTOR
1	1 METRE LEG ASSEMBLY	3136-5	CONTRACTOR
1	1.9 METRE HORIZONTAL BRACE ASSEMBLY	3136-6	CONTRACTOR
1	CAR HOOK ASSEMBLY LEG	3136-10	CONTRACTOR

EST. W.T. 668.0 kg
* WATER SURVEY OF CANADA



NOTES:

1. ALL PARTS TO BE HOT-DIPPED GALVANIZED C.S.A. G-164.
2. ALL BOLTS & NUTS TO BE M16 A325M TYPE 2 GALVANIZED.
3. ALL STEEL SHALL CONFORM TO C.S.A. G40.21M GRADE 350W GALVANIZED.

ALL DIMENSIONS IN MILLIMETRES
UNLESS OTHERWISE NOTED