



Parks  
Canada

Parcs  
Canada

Canada

# **Appendix A**

## **Crab Winch Refurbishment Project**

### **Ontario Waterways – Trent Severn Waterway**

**Prepared by: Ben Hollinger**

**Date: November 2021**

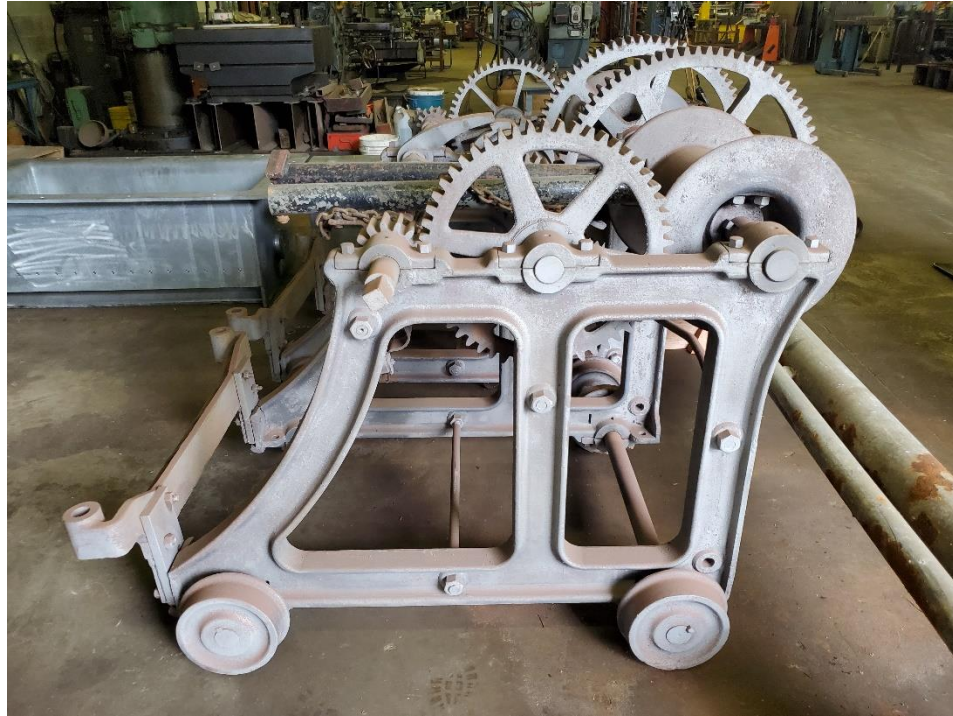


Figure 1.0 – Crab winch set – Sand blasted



Figure 1.1 – Crab winch set – Sand Blasted





Figure 2.0 – Crab winch typical condition



Figure 2.1 – Crab winch typical condition



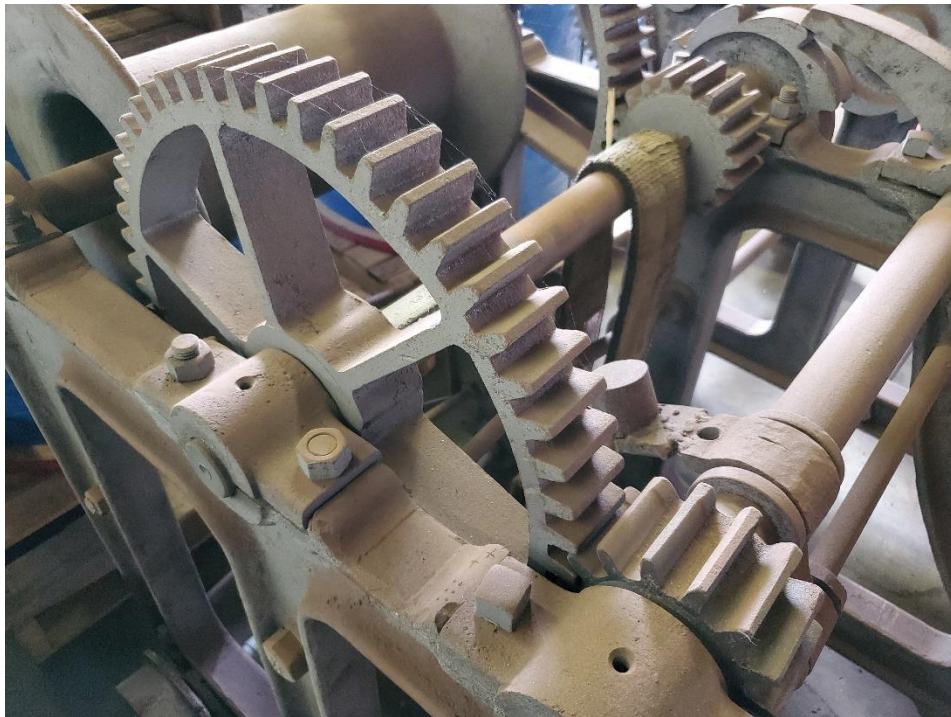


Figure 3.0 – Gearing requiring shielding/guarding



Figure 3.1 – Gearing requiring shielding/guarding





Figure 4.0 – Split pillow block housing with shims installed

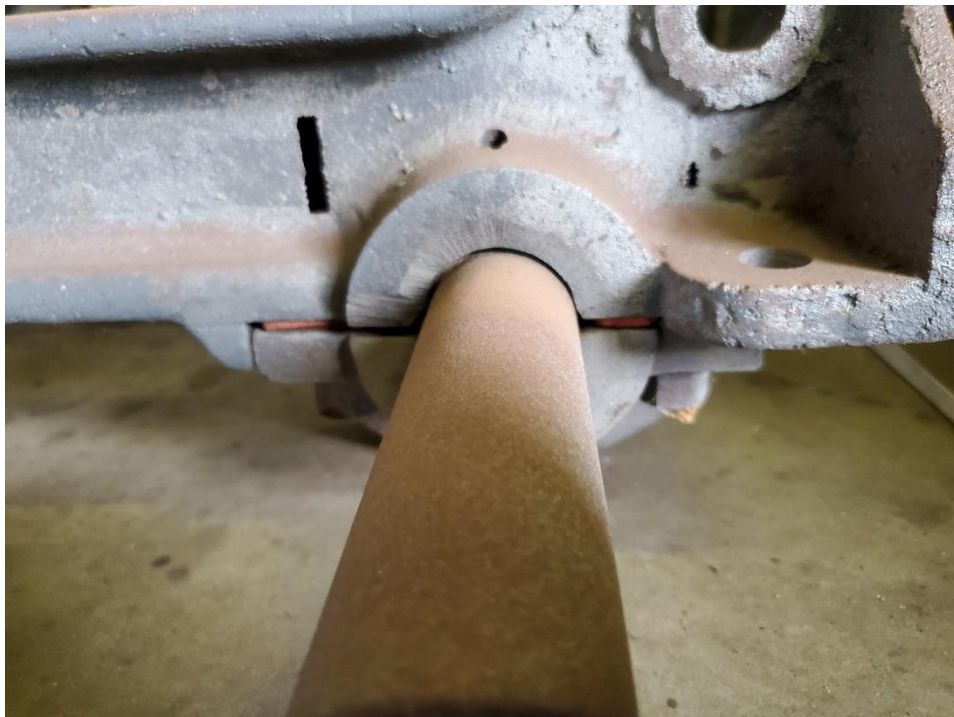


Figure 4.1 – Split pillow block housing with shims installed



Figure 5.0 – Split pillow block housing with brass bushing



Figure 5.1 – Split pillow block housing with brass bushing





Figure 6.0 – Structural rod



Figure 6.1 – Structural rod





Figure 7.0 – Bracket for rail clamps



Figure 7.1 – Rail clamp for 40lb rails



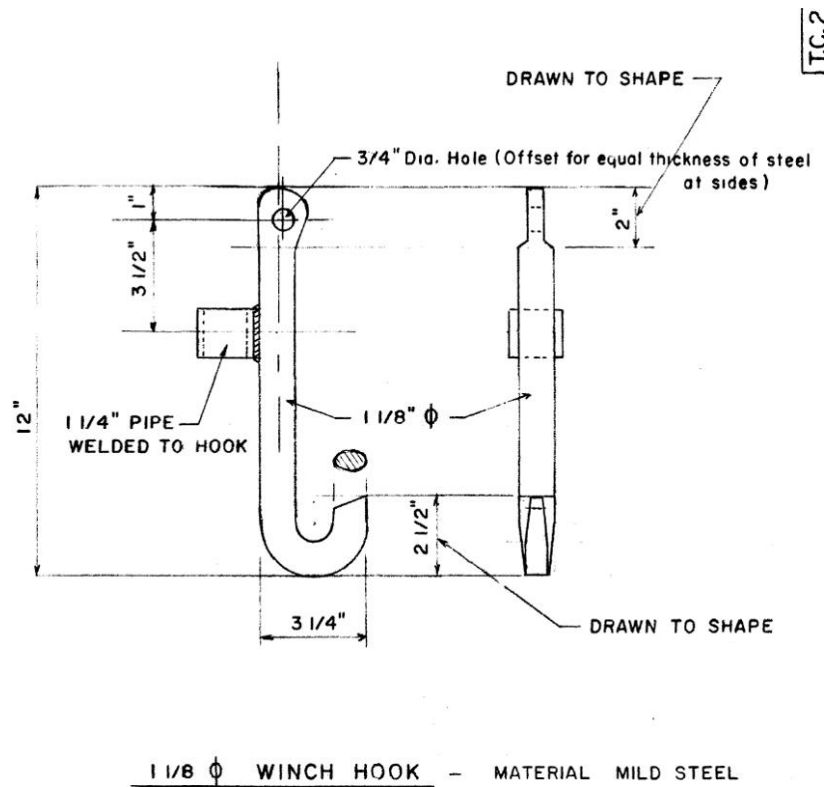


Figure 8.0 – Lifting hook example

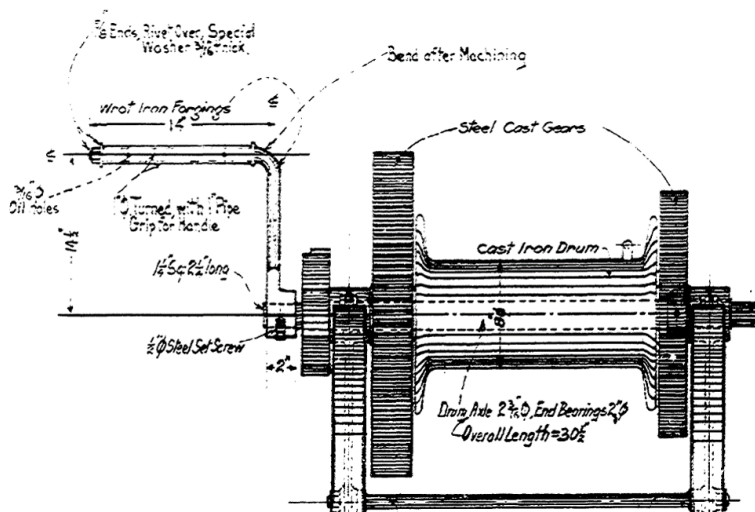


Figure 9.0 – Crank handle example

