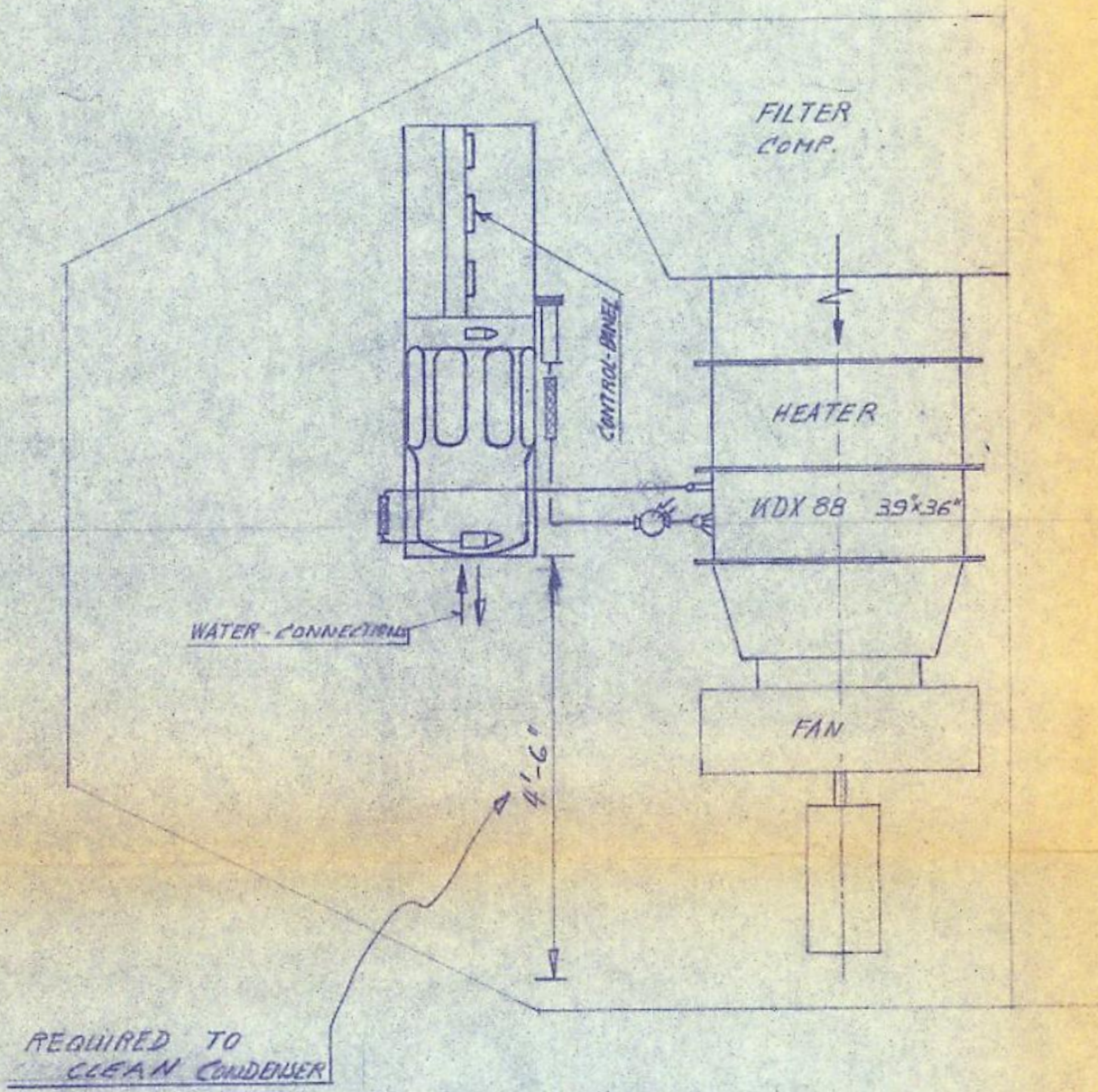
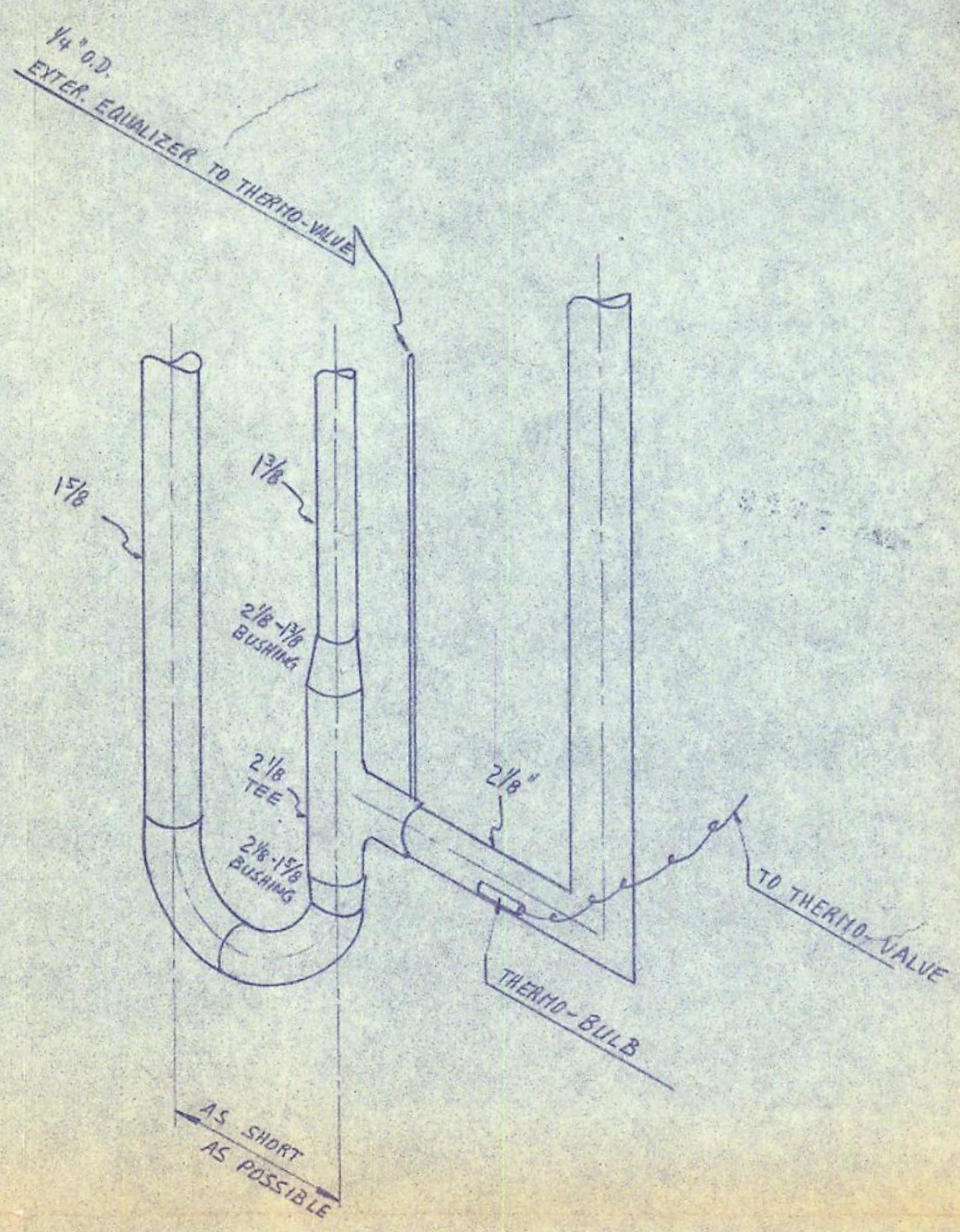
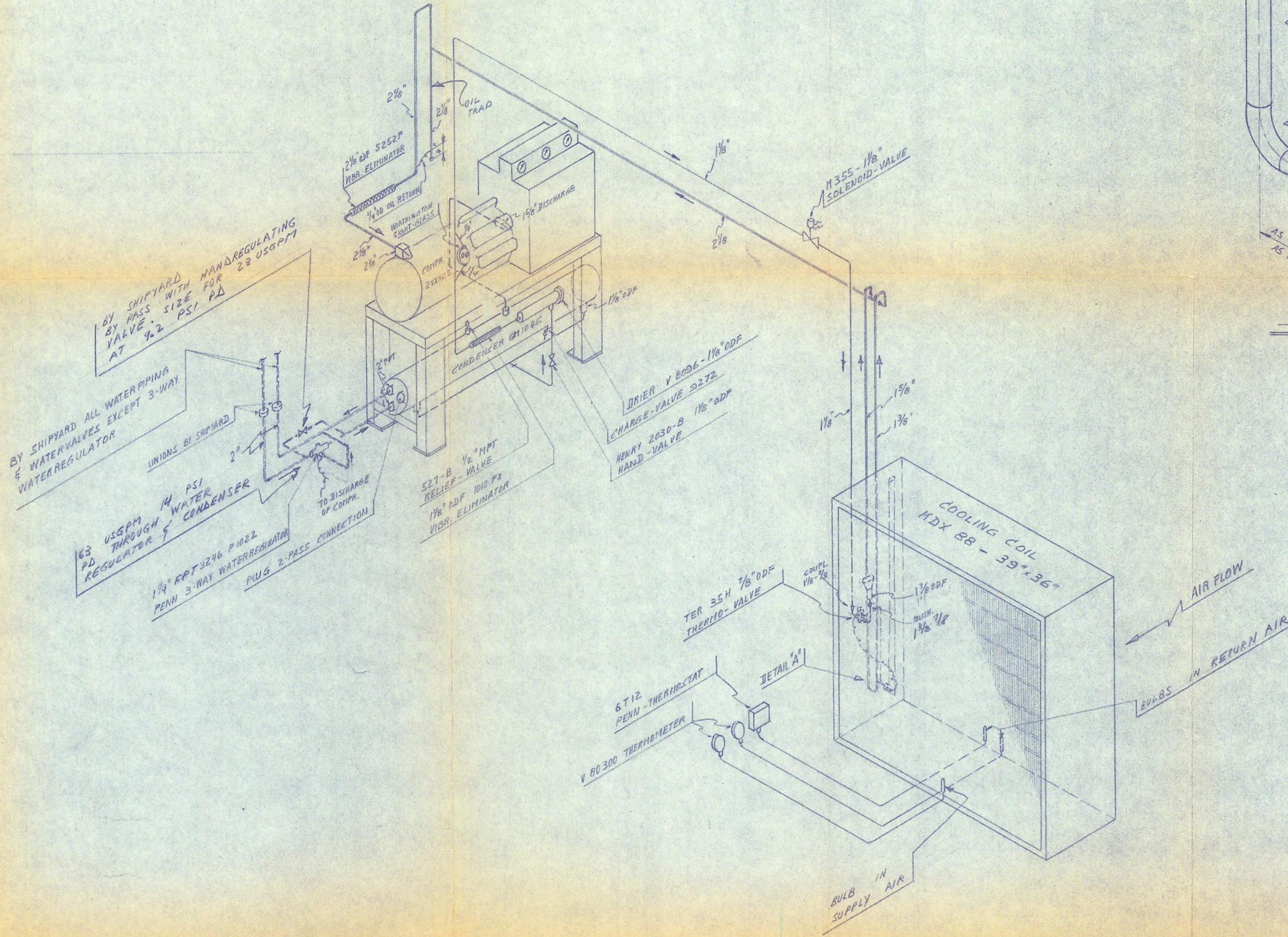


WEIGHT LIST
 CONDENSING UNIT 1940 LB
 COOLING COIL
 KDX 88 39x36 470 LB



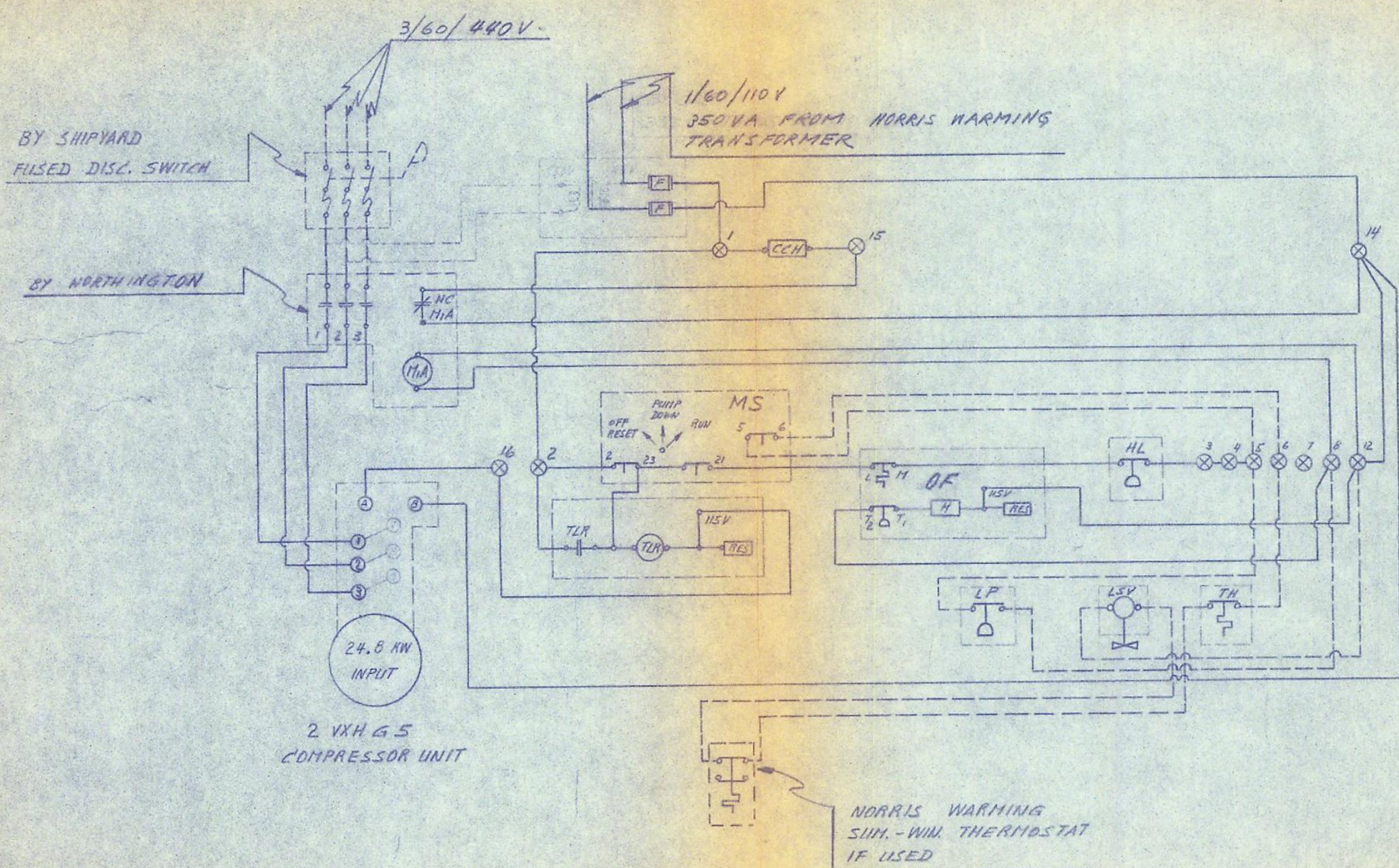
PLAN-VIEW SCALE: 1/2" = 1'-0"



DETAIL 'A'

ANTICIPATED OPERATING PRESSURE AND CONTROL SETTINGS

- 1 - SUCTION - PRESSURE 68 PSIG
- 2 - OIL - PRESSURE 113 PSIG
- 3 - DISCHARGE - PRESSURE 220 PSIG
- 4 - NET OIL - PRESSURE 45 PSI
- 5 - DISCHARGE TEMP. MAX. 275 °F
- 6 - HIGH PRESS. SWITCH SETT. 240 PSIG
- 7 - LOW PRESS. SWITCH SETT. 50 PSIG
- 8 - OIL FAILURE SWITCH SETT. 25 PSI
- CUT OUT 35 PSI



ELECTRICAL WIRING

LEGEND TO ELECTRICAL WIRING

- WIRING BY SHIPYARD
- WIRING BY WORTHINGTON
- TERMINAL ON WORTHINGTON TERMINAL STRIP
- CH CRANKCASE HEATER 1/60/110V
- NC NORMALLY CLOSED CONTACT
- N/A HOLDING COIL IN COMP. MOTOR STARTER
- F FUSE
- MS MANUAL SWITCH ON WORTHINGTON CONTR. PANEL
- HL HIGH-LOW PRESSURE SWITCH
- TH THERMOSTAT 6 T12 BULB IN RETURN AIR
- LV LIQUID-SOLENOID-VALVE M 355-1/8 ODF
- OF OIL FAILURE CONTROL
- H HEATER
- RES RESISTOR
- TLR MOTOR TERMINAL PROTECTION LOCK OUT RELAY
- LP P70 A62 LOW PRESS. SWITCH

ISOMETRIC PIPING

NOTE: PIPE SIZES SHOWN ARE OUTSIDE DIAMETERS.

USE THIS DRAWING FOR GUIDANCE ONLY. INSTALL EQUIPMENT IN ACCORDANCE WITH 6000 REFRIGERATION STANDARDS.

GALT EQUIPMENT LIMITED 47 MARIE VICTORIN BLVD. CANDIAC, P.Q.			
ISOMETRIC PIPING WIRING DIAGRAM			
7	NOV 1 1967		
5	JUN 9 1967	PRELIMINARY	JUNE 9 1967 W.G.
N.O.	DATE	DESCRIPTION	DATE INT'L
ISSUES	REVISIONS		
CUSTOMER			HULL 66M 102
DRAWN			W.G.
CHECKED			W.N.
SCALE			AS NOTED
CONTRACT			C-1433
DWG			1769-A