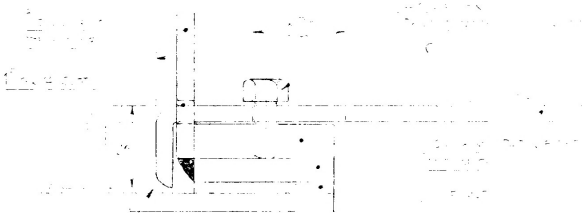
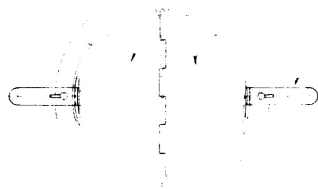


SECTION THROUGH FIRE FLAP
 SHOWING DETAIL OF DOOR

DOOR AND FLAP TO BE
 FLAME RESISTANT

VENTILATION SYSTEM
 SHALL BE AS SHOWN
 SEE PLAN # 4

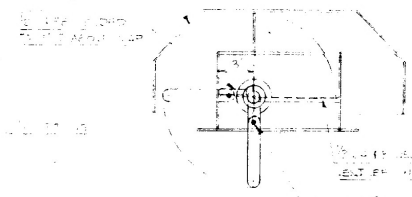
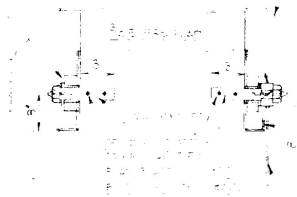


DOOR AND FLAP TO BE
 FLAME RESISTANT
 SEE PLAN # 4

SECTION THROUGH FIRE FLAP
 EX-AUGUST FAN FROM GALLERY (PLANT # 4)
 SHALL BE AS SHOWN

SECTION THROUGH FIRE FLAP
 TO EXHAUST FAN FROM GALLERY
 (SEE PLAN # 4)

SECTION THROUGH FIRE FLAP
 TO EXHAUST FAN FROM GALLERY
 (SEE PLAN # 4)



DOOR AND FLAP TO BE
 FLAME RESISTANT

VENTILATION SYSTEM
 SHALL BE AS SHOWN
 SEE PLAN # 4

FIRE FLAP FOR MUS-ROOM TOP ON
 EXHAUST FAN FROM LABORATORY
 (PLANT # 3) - SEE PLAN # 4

PORT WELLER DRY DOCKS LTD. ST. CATHARINES, ONTARIO		
SECTION THROUGH FIRE FLAP TO EXHAUST FAN FROM GALLERY (PLANT # 4)		
SCALE: 1/4" = 1'-0"	DRAWN BY: A. W. [unclear]	COMPLETED: 08 FEBRUARY 1967
PLANT # 4	ACCOUNT No.	FLY # 1 TO PLAN No. 47-H-205/4