



GENERAL NOTES

- CONTRACTOR TO VERIFY ALL DIMENSIONS AND CLEARANCES ON SITE PRIOR TO CONSTRUCTION AND REPORT ANY DISCREPANCIES AND/OR OMISSIONS TO DEPARTMENTAL REPRESENTATIVE.
- CONTRACTOR MUST VISIT THE SITE AND FULLY FAMILIARIZE THEMSELVES WITH THE SCOPE OF THE WORK PRIOR TO PROJECT COMMENCEMENT.
- ALL TRADES TO COORDINATE WORK ON SITE, WITH APPROVAL OF DEPARTMENTAL REPRESENTATIVE TO AVOID ANY CONFLICTS AND/OR INTERFERENCE.
- ANY AND ALL REQUIRED SHUTDOWNS SHALL BE COORDINATED WITH DEPARTMENTAL REPRESENTATIVE.
- INSTALLATION OF ALL SYSTEMS SHALL BE IN ACCORDANCE WITH APPLICABLE CODES AND STANDARDS.
- CONTRACTOR TO BE RESPONSIBLE FOR REINSTATEMENT AND REPAIR OF ANY DAMAGE CAUSED BY WORK.
- CONTRACTOR SHALL PREVENT THE SPREAD OF DUST AND DEBRIS BEYOND AREA OF WORK AND CLEAN ALL SURFACES AT COMPLETION.

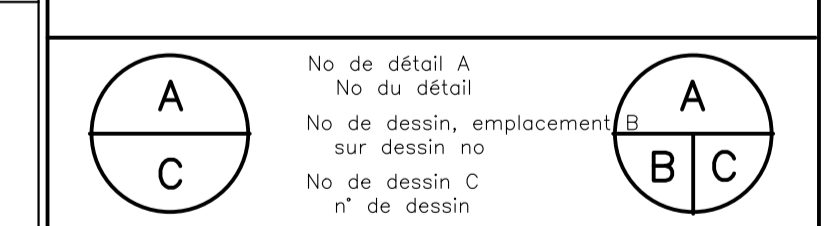
No.	Date	Revision	By:	For:
1	AUG 2022	RE-ISSUED FOR TENDER	JCW	
2	APR 2022	RE-ISSUED FOR TENDER - CANCELLED	JCW	
3	JUN 2021	ISSUED FOR TENDER - CANCELLED	JCW	
4	JUN 2021	ISSUED FOR TRANSLATION	JCW	
5	NOV 2020	DESIGN FINAL REVIEW - ISSUED FOR BIDDING & BUDGETARY APPROVALS	JCW	

KEY PLAN



MTL CAMPUS KEY PLAN  
NOT TO SCALE

- Verify all dimensions and site conditions and be responsible for same
- Vérifier toutes les dimensions et l'état des lieux et en assumer la responsabilité



Montreal Rd Campus Exterior Vent Enclosure Upgrades  
(NOTE ALL SHEETS TO BE PRINTED IN COLOR)

MONTREAL ROAD CAMPUS

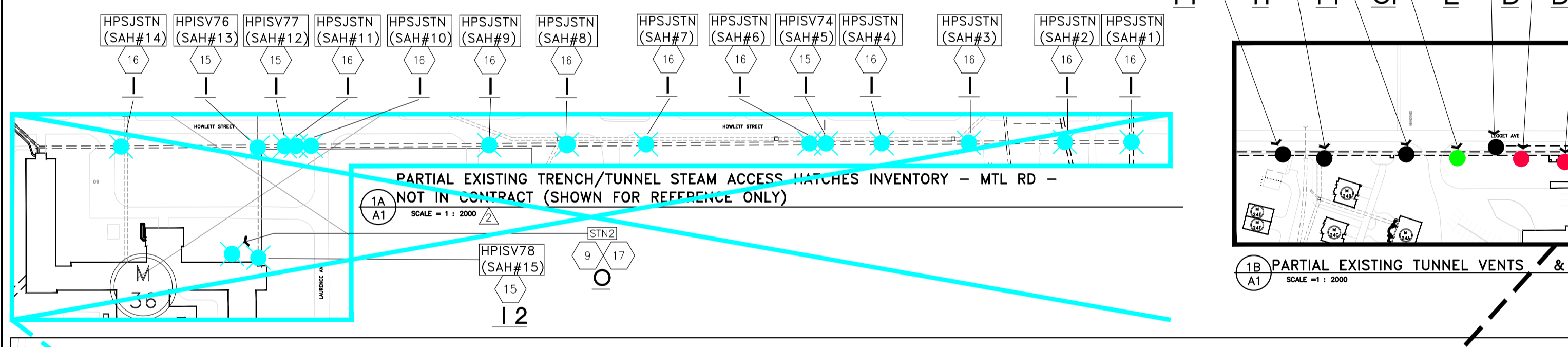
- TUNNEL / VENTS / HATCHES PLAN
- PROJECT INFO
- KEY PLANS / LEGEND
- EXISTING PICS OF HATCH/VENT TYPES
- SPECIFIC INSTRUCTIONS NOTES

designed	JCW	conçu	Date	MAY 2021	Date
drawn	JCW	dessiné	scale	AS SHOWN	échelle
checked	J.L./D.S./M.P.	vérifié	sheet	A1 of/de A3	feuille
approved	J.L./D.S.	approuvé	W.O.no. / N° d'ordre de travail	A1-011388-01	

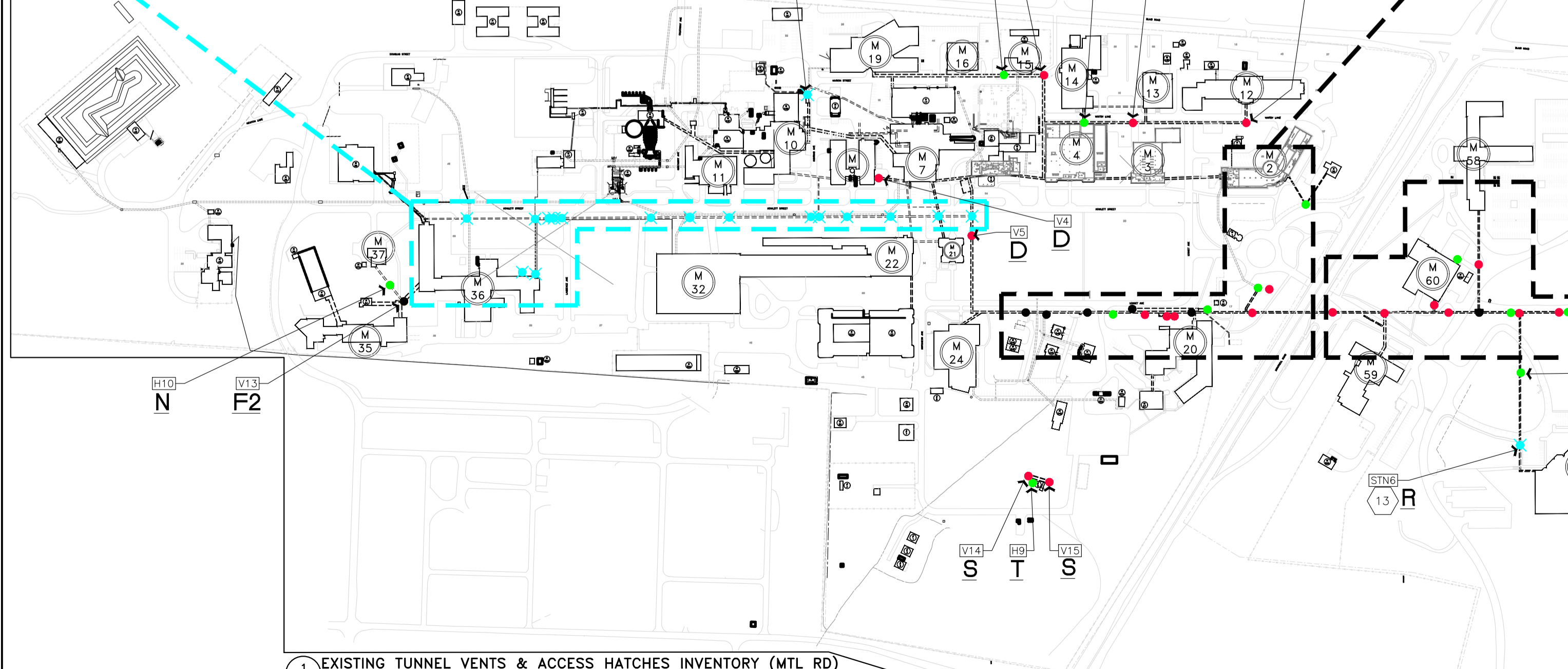
5876-A1  
Fichier ACAD 5876-A56VENTS-ARCH-TENDER2022-Rev3a-All.dwg



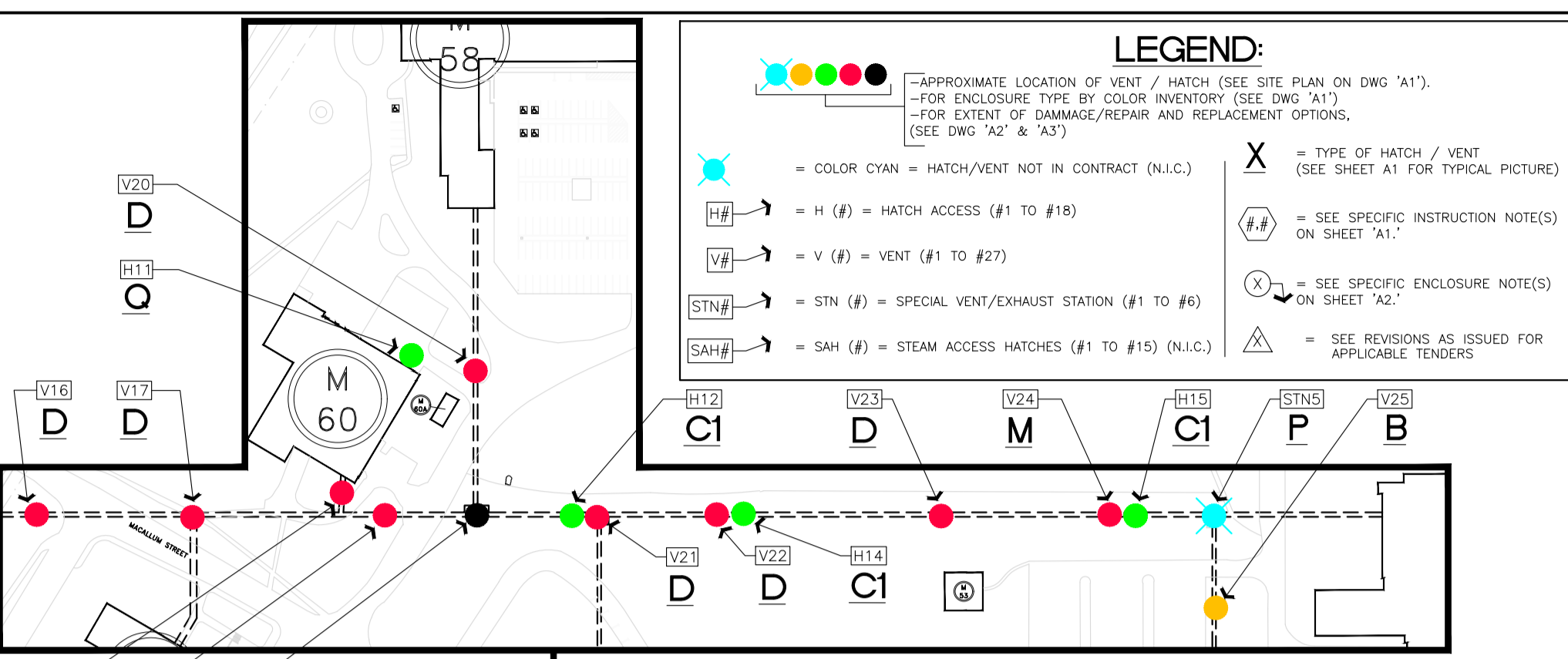
EXISTING TUNNEL VENTS INVENTORY (MTL RD)  
SCALE = 1:1000



PARTIAL EXISTING TRENCH/TUNNEL STEAM ACCESS HATCHES INVENTORY - MTL RD - NOT IN CONTRACT (SHOWN FOR REFERENCE ONLY)  
SCALE = 1:1000



EXISTING TUNNEL VENTS & ACCESS HATCHES INVENTORY (MTL RD)  
SCALE = 1:1000



PARTIAL EXISTING TUNNEL VENTS & ACCESS HATCHES INVENTORY (MTL RD)  
SCALE = 1:1000

SPECIFIC INSTRUCTIONS NOTES:

- EXISTING METAL ENCLOSURE FULL ASSEMBLY (SEE TYPE 'A') TO BE REMOVED AND DISCARDED. PREPARE CONCRETE CURB SURFACE TO BE SMOOTH. CLEAN ALL DEBRIS WITHIN STEEL GRATE BELOW. SEE DETAIL 1/A2. INSTALL NEW METAL ENCLOSURE AS PER NOTE 1/A2.
- AT EXISTING ACCESS HATCH (SEE TYPE 'C1', 'C2', 'E', 'G', 'J', 'N', 'P' & 'Q'), PREPARE ALL EXPOSED METAL SURFACES FOR NEW PAINT. REMOVE OLD PAINTING AT ALL JOINTS. RE-CAULK ALL JOINTS WITH CLEAR EXTERIOR SEALANT. ABRASE, DECREASE AND GRIND SMOOTH IF NECESSARY ALL EXPOSED SURFACES. APPLY PRIMER COAT. APPLY TWO COATS OF TOP COAT EXTERIOR METAL PAINT GRADE TO FINISH. REPAIRS TO BE ACCORDANCE TO MANUFACTURER SPECIFICATIONS. TOP COAT TO BE SOFT GRAY, VERTICAL METAL STOCK AND FLASHING METAL TO BE SOFT GRAY. ALSO SEE (17) FOR ACTUAL DAMAGE PIECES TO BE REPLACED.
- WHERE EXISTING PIPING EXISTS AND/OR WHERE REBAR LADDER RODS EXISTS, PROVIDE AND ENSURE FULL SEAL AT PENETRATIONS WITH EXTERIOR SEALANT (SOFT GRAY COLOR).
- AT EXISTING CONCRETE CURB AND METAL GRATE ACCESS HATCH (SEE TYPE 'B'), SUPPLY, PRE-MANUFACTURED METAL ENCLOSURE. SEE DETAILS 1,2 & 3 ON SHEET A2. ALSO REFER TO STEEL ASSEMBLY NOTES ON SHEET A2. PRIOR TO INSTALLATION, PREPARE CONCRETE CURB SURFACE TO BE SMOOTH. CLEAN FROM ALL DEBRIS AND WITHIN STEEL GRATE BELOW.
- AT EXISTING CONCRETE TOWER VENTS (SEE TYPE 'D', 'M'), DEMOLISH TOP CONCRETE ENCLOSURE ABOVE TOP CHAMFERED EDGE LEVEL. INCLUDING METAL GRILL AND LOUVER. GRIND SMOOTH AND LEVEL EXPOSED PERIMETER FLAT EDGE SURFACE. AT TUNNEL BELOW, REMOVE TRAP DOOR ASSEMBLY. SUPPLY PRE-MANUFACTURED METAL ENCLOSURE C/W NEW LOUVER ASSEMBLY. SEE DETAILS 6 & 7 ON SHEET A2. ALSO REFER TO STEEL ASSEMBLY NOTES ON SHEET A2.
- AT EXISTING CONCRETE TOWER VENTS (SEE TYPE 'S'), MAINTAIN FULL HEIGHT CONCRETE ENCLOSURE AND LOUVER GRILLS. SANDBLAST ALL ABOVE GRADE. INSTALL NECESSARY BOTTOM METAL TRIM C/W DRIP EDGE. INSTALL NEW PERIMETER METAL TRIM AROUND ALL EXISTING LOUVERS. CONSTRUCT & INSTALL & FASTENED NEW TOP METAL CAP AND DRIP EDGE ASSEMBLY ONLY. (SIMILAR TO DETAILS 6/A2 - NO VERTICAL EDGES BELOW CAP). (TOP CAP TO BE SOFT GRAY) (PARPING AND TRIM TO BE DARK GRAY COLOR).
- AT EXISTING CONCRETE TOWER VENTS (SEE TYPE 'T'), MAINTAIN FULL HEIGHT CONCRETE ENCLOSURE. SANDBLAST ALL CONCRETE EXPOSED SURFACES. PREPARE CLEAN SMOOTH SURFACE FOR PROPER ADHESION. INSTALL NEW PARPING TO ALL SURFACE ABOVE GRADE. INSTALL NECESSARY BOTTOM METAL TRIM C/W DRIP EDGE. (PARPING AND TRIM TO BE DARK GRAY COLOR).
- AT EXISTING CONCRETE TOWER VENTS (SEE TYPE 'K'), SUPPLY, PRE-MANUFACTURED METAL ENCLOSURE ONLY. MAINTAIN FULL HEIGHT CONCRETE ENCLOSURE. SEE DETAIL 11 ON SHEET A2. ALSO REFER TO STEEL ASSEMBLY NOTES ON SHEET A2.
- WHERE ELECTRICAL CONDUIT / BOXES / MISC EVACUATION PIPING EXISTS, COORDINATE NEW FRAMING/FLAT STOCK METAL TO TUNNEL. WHERE EXISTING METAL MESH ENCLOSURE BOX/COAGE ARE ATTACHED TO OCCUR, REMOVE AND RE-FASTENED TO NEW FRAME, ENSURE METAL FLASHING IS CONTINUOUS AND PROPERLY SEAL AT PENETRATIONS WITH WEATHERPROOF CAULK (SOFT GRAY COLOR). WHERE EXISTING PIPING EXISTS THROUGH NEW LOUVER, ADAPT OPENING WITHIN LOUVER ASSEMBLY FOR SMOOTH EDGES AND TRIM AT PERIMETER SURROUNDING PIPING.
- AT EXISTING EXHAUST STATION TYPE 'Y', MAINTAIN FULL HEIGHT CONCRETE ENCLOSURE. SUPPLY NEW PRE-MANUFACTURED METAL ENCLOSURE. SEE DETAIL 4 ON SHEET A2. ALSO REFER TO STEEL ASSEMBLY NOTES ON SHEET A1. REPAIR DAMAGED BRID WIRE SCREEN WITH MATCHING NEW GRILL. COORDINATE SIZE ON SITE. EXISTING LOUVER TO REMAIN.
- AROUND FULL PERIMETER OF CONCRETE EXISTING CURB/BASE, PROVIDE IN A 610mm CONTINUOUS CIRCULAR/RECTANGULAR WIDTH. A 300mm DEEP GRANULAR (CLEAR 20mm) COMPACTED BASE C/W TEXTILE MEMBRANE BELOW. CLEAN THE CONCRETE SURFACE BY PRESSURE WASHING. PROVIDE ADEQUATE SURROUNDING STRUCTURE (ENSURE COMPLETE GRANULAR COVERAGE OF TEXTILE MEMBRANE). WHERE ASPHALT SIDEWALKS ARE PRESENT, TERMINATE GRANULAR INFILL LEVEL TO EDGE OF EXISTING SIDEWALK.
- CONCRETE BASE. REPAIR DAMAGED BLUE/STAIN MEMBRANE/WATERPROOFING AND REPLACE WITH NEW. ENSURE REPLACEMENT TO FULL PERIMETER 300mm DEEP. ALLOW PROPER ADHERENCE TO SURFACE BELOW GRADE WITH APPLICABLE FASTENERS APPROVED BY MANUFACTURER. REPAIR EXISTING METAL FLASHING AS NEEDED. ENSURE PROPER OVERLAPS FOR DRAINAGE. COORDINATE WITH (8) ABOVE.
- SANDBLAST VERTICAL CONCRETE EXPOSED BLACK/GRAY FOUNDATION SURFACE (ALL SIDES). PREPARE CLEAN SMOOTH ALL SURFACES FOR PROPER NEW PARPING ADHESION AS PER MANUFACTURER'S SPECIFICATIONS. INSURE ALL CRACKS, ANY VISIBLE PENETRATIONS ARE RE-SEALED. INSTALL NEW PARPING TO SURFACE ABOVE-GRADE. INSTALL NECESSARY BOTTOM METAL TRIM C/W DRIP EDGE. (PARPING AND TRIM TO BE DARK GRAY COLOR). COORDINATE WITH (9) ABOVE. (PARPING AT BOTTOM OF WALLS TO BE PREMIUM QUALITY, CEMENT MIXTURE WITH SUPERIOR BONDING. PROVIDE SMOOTH FINISH FOR EASY LEVELING AND SMOOTHING. ACCEPTANCE SHALL BE SAKRETE PARPING MIX AS MANUFACTURED BY KING, OR APPROVED EQUIVALENT. SURFACE PREPARATION SHALL BE AS PER MANUFACTURER'S WRITTEN INSTRUCTIONS.)
- REMOVE ALL DAMAGED METAL FLASHING COMPONENTS AND REPLACE WITH NEW (MATCH ADJACENT COLOR). RE-CAULK ALL JOINTS WITH WEATHER SEALANT WHERE NECESSARY. WHERE LARGER GAPS EXIST AT JUNCTIONS WITH EXISTING FRAMING COMPONENTS, ENSURE TIGHT TOP BACKING FOR PROPER CAULKING APPLICATIONS.
- REPLACE DAMAGED CIRCULAR INSERTS WITH MATCHING ADJACENT PIECES.
- (N.I.C./SPECIAL EXHAUST / ACCESS STATION TYPE 'P' & 'R', NO REPAIRS.
- SPECIAL VENT / ACCESS HATCH TYPE 'F1', DEMOLISH AND REPLACE WITH NEW STEEL ENCLOSURE AS PER DETAIL 6/A2. (SIZE OF BOX DIFFERS AND PROVIDE 4 LOGWRES).
- SPECIAL VENT / ACCESS HATCH TYPE 'F2', DEMOLISH AND REPLACE WITH NEW STEEL ENCLOSURE AS PER DETAIL 6/A2. MAINTAIN CIRCULAR TOP EXHAUST FOR RE-INSTALLMENT OVER NEW. (SIZE OF BOX DIFFERS AND PROVIDE NO SIDE LOUVER). ENSURE PIPING PENETRATIONS ARE SEALED THROUGH NEW FLATSTOCK METAL SIDE ENVELOP. ADAPT NEW TOP CAP TO BE FLAT TO ACCOMMODATE RE-INSTALLMENT OF CIRCULAR TOP EXISTING EXHAUST.
- (N.I.C.) HIGH PRESSURE STEAM VALVE (HPSV) HATCH ACCESS. TYPE 'Y' & 'Z'.
- (N.I.C.) HIGH PRESSURE STEAM JUNCTION STATION (HPSJ) HATCH ACCESS. TYPE 'Y'.
- (N.I.C.) SPECIFIC HATCH ACCESS TO M36 SUB-GRATE MECH'L ROOM BELOW. NO REPAIRS. TYPE 'O'.
- ROOF TOP HATCH ACCESS TO M108 NO REPAIRS. TYPE 'U'.
- PROVIDE ADDITIONAL COUNTER FLASHING PIECES TO COVER GAP IN BETWEEN EXISTING WINDOW FRAME AND EXISTING HATCH ASSEMBLY SURFACES WHILE ENSURING MINOR SLOP TOWARDS EXTREMES. AD FLASHING TO FULL PERIMETER BY LOOSENING AND/OR TEMPORARY REMOVING SCREWS TO ALLOW NEW FLASHING TO BE INSTALLED BELOW EXISTING SURFACES. RE-FASTENED TIGHTLY AND CAULK FULL PERIMETER OVERLAP. ALLOW DRIP EDGE.

GENERAL NOTES:

- (APPLIES TO ALL SHEETS INCLUDED IN THIS PACKAGE (A1-A2-A3))
- DEMOLITION OF CONCRETE STRUCTURES AND MISC ASSEMBLIES (COORDINATE WITH NRC REPRESENTATIVE IN ALL PHASES):
    - MANDATORY VISUAL ASSESSMENT OF ALL VENT/HATCHES BY THE CONTRACTOR IS REQUIRED AT THE BEGINNING OF THE CONSTRUCTION.
    - SURVEY PLAN OF EXISTING CONCRETE TOWER ELEMENTS DESIGNATED TO REMAIN AND TO BE DEMOLISHED.
    - DEMOLITION / DECONSTRUCTION PLAN IDENTIFYING MEANS AND METHODS OF DECONSTRUCTION WORK.
    - DEMOLITION / DECONSTRUCTION OF CONCRETE TOWER ELEMENTS TO BE UNDERTAKEN BY A QUALIFIED CONTRACTOR IN ACCORDANCE WITH ALL PREVAILING LEGISLATION, CODES AND STANDARDS.
    - PROVIDE TEMPORARY WORK REQUIRED IN ORDER TO MAINTAIN THE STABILITY OF THE EXISTING TOWER COMPONENTS ELEMENTS AND STRUCTURES DESIGNED TO REMAIN.
    - PREVENT DEBRIS AND WATER FROM BLOCKING MEANS OF EGRESS.
    - STOCKPILING OF THE MATERIAL ON SITE IS NOT PERMITTED.
    - DISPOSE OF MATERIAL IN ACCORDANCE WITH PREVAILING CODES AT LICENSED FACILITIES.
    - DEMOLITION MAY UTILIZE ANY LEGAL MEANS OR METHODS PERMITTED INCLUDING HYDRAULIC OR MECHANICAL TECHNIQUES.
    - WORK SITE TO BE KEPT CLEANED AND FREE OF DEBRIS AT ALL TIMES.
    - MAKE GOOD ALL EXISTING WORK DISTURBED BY DEMOLITION OR DECONSTRUCTION PROCEDURES. REINSTATE DISTURBED GRASS AREA WITH TOPSOIL AND SO2.
    - BACKFILLING MATERIAL (COORDINATE WITH NRC REPRESENTATIVE IN ALL PHASES):
      - BEFORE EXCAVATION WORK BEGINS, CONTRACTOR IS TO VERIFY THE EXISTENCE OF UNDERGROUND SERVICES FOR CONDUITS OR SERVICES THAT MAY INTERFERE WITH THE EXECUTION OF WORK. THE CONTRACTOR IS RESPONSIBLE TO PROTECT AND TEMPORARILY SUPPORT FOUND UTILITIES.
      - CARRY OUT EXCAVATION WORK FOLLOWING RECTILINEAR CONTOURS TO SUIT MAX DEPTH OF 300mm.
      - IF APPLICABLE, THE CONTRACTOR SHALL COMPLY WITH ALL LAWS CONCERNING THE MANAGEMENT OF EXCAVATED MATERIALS. THE CONTRACTOR SHOULD ALSO INCLUDE THE CODES AND REGULATIONS OF THESE LAWS.
      - THE GRANULAR BACKFILL TO BE INSTALLED MUST MEET ONTARIO PROVINCIAL STANDARD SPECIFICATIONS. BACKFILL MUST BE FREE OF SHALES OR ANY OTHER MATERIALS POTENTIALLY CAUSING SWELLING.
      - UNLESS OTHERWISE SPECIFIED ON PLANS, GRANULAR FOUNDATION MUST CONSIST OF 300mm GRANULAR CRUSHED STONES (E20mm) WITH FABRIC MEMBRANE.
      - BACKFILLING MATERIAL TOPPING TO MATCH EXISTING (CLEAR STONE) WHERE APPLICABLE. FINAL THICKNESS AFTER COMPACTION TO BE 300mm.
      - DEGREE OF COMPACTION TO BE 98% SP1000 REQUIRED FOR GRANULAR 'A'. MAINTAIN OPTIMUM MOISTURE CONTENT IN BACKFILL MATERIAL TO ACHIEVE THE COMPACTION DENSITY REQUIRED.
      - SLOPE NEW GRASSES AROUND THE VENTS AND HATCHES AWAY FROM THE STRUCTURES TO ENSURE PROPER DRAINAGE AWAY FROM VENTS AND HATCHES.
  - ADDITIONAL REPAIR WORK (COORDINATE WITH NRC REPRESENTATIVE IN ALL PHASES):
    - REPAIR EXISTING METAL FLASHING IN AREAS WHERE DAMAGED AND INDICATED ON PLANS. AT EACH VENT/HATCH, INSPECT FLASHING. CORRECT DEFICIENCIES SUCH AS: BENT FLASHING, MISALIGNED FLASHING, HOLES, REPLACE FLASHING IF LOCAL. I DEFICIENCIES ARE INSUFFICIENT PROVIDE ADHESIVE SEALANT.
    - ABRASE, DECREASE AND GRIND SMOOTH IF NECESSARY ALL EXPOSED SURFACES. APPLY PRIMER COAT. APPLY TWO COATS OF TOP COAT EXTERIOR METAL PAINT GRADE TO FINISH SURFACES IN ACCORDANCE TO MANUFACTURER SPECIFICATIONS.
    - PROVIDE LOCAL FOUNDATION/MASONRY REPAIRS. VISUALLY INSPECT ALL COMPONENTS AROUND VENTS/HATCHES AND FILL ANY CRACKS, CHIPS IN SURFACES WITH COLOR-MATCHING REPAIR MORTAR. (SHATOR-123 PLUS), REPOINT DAMAGED MASONRY JOINTS WHERE APPLICABLE TO ENSURE INSTALLATION OF REPAIR SEALANT.
  - DESIGNATED SUBSTANCE REPORT (DSR):
    - REFER TO DSR REPORT (INCLUDED AS PART OF THIS TENDER) FOR EXTENT OF DESIGNATED SUBSTANCES.
    - REFER TO SPECIFIC SECTIONS (02 80 01, 02 83 00 & 02 89 00) FOR MORE INFO ON PRECAUTIONARY MEASURES.
  - THE FOLLOWING SITE RE-INSTATEMENT NOTES APPLIES TO ALL (A)(B)(C)(D) (COORDINATE WITH NRC REPRESENTATIVE IN ALL PHASES):
    - ALL DISTURBED AREAS INCLUDING BUT NOT LIMITED TO ASPHALT, GRASS, CONCRETE BARRIERS AND CURBS ETC SHALL BE REINSTATED TO MATCH EXISTING CONDITIONS OR BETTER AS DIRECTED BY THE DEPARTMENTAL REPRESENTATIVE.
    - EXISTING TREES ARE TO BE PRESERVED AND PROTECTED DURING CONSTRUCTION AND REINSTATEMENT ACTIVITIES IN ACCORDANCE WITH OPSS 801 AND OPSS 220.010.
    - PATHWAYS, WALKWAYS AND RELATED LANDSCAPE OR ASPHALT AREAS SHALL BE REINSTATED TO MATCH EXISTING MATERIAL IN TYPE AND THICKNESS.
    - ASPHALT REINSTATEMENT MUST BE IN ACCORDANCE WITH OPSS 310.
    - LANDSCAPE AREAS TO BE REINSTATED WITH 150MM OF TOPSOIL AND SO2 IN ACCORDANCE WITH OPSS 802 AND OPSS 803.



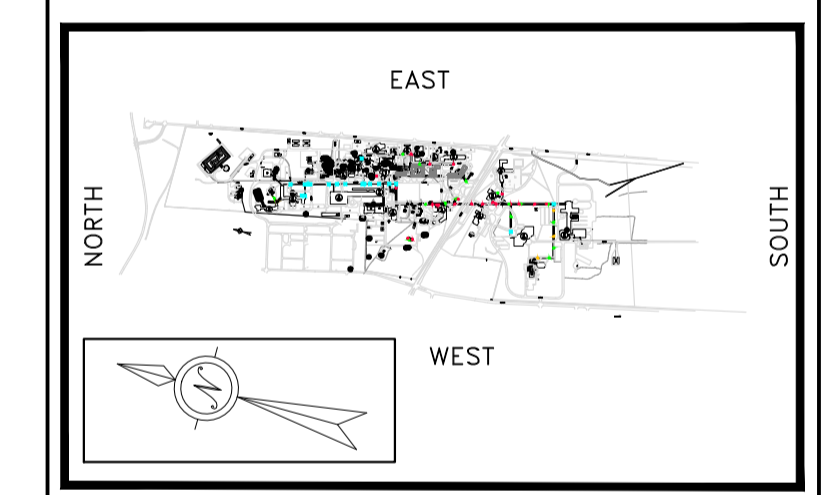
GENERAL NOTES

- CONTRACTOR TO VERIFY ALL DIMENSIONS AND CLEARANCES ON SITE PRIOR TO CONSTRUCTION AND REPORT ANY DISCREPANCIES AND/OR OMISSIONS TO DEPARTMENTAL REPRESENTATIVE.
- CONTRACTOR MUST VISIT THE SITE AND FULLY FAMILIARIZE THEMSELVES WITH THE SCOPE OF THE WORK PRIOR TO PROJECT COMMENCEMENT.
- ALL TRADES TO COORDINATE WORK ON SITE, WITH APPROVAL OF DEPARTMENTAL REPRESENTATIVE TO AVOID ANY CONFLICTS AND/OR INTERFERENCE.
- ANY AND ALL REQUIRED SHUTDOWNS SHALL BE COORDINATED WITH DEPARTMENTAL REPRESENTATIVE.
- INSTALLATION OF ALL SYSTEMS SHALL BE IN ACCORDANCE WITH APPLICABLE CODES AND STANDARDS.
- CONTRACTOR TO BE RESPONSIBLE FOR REINSTATEMENT AND REPAIR OF ANY DAMAGE CAUSED BY WORK.
- CONTRACTOR SHALL PREVENT THE SPREAD OF DUST AND DEBRIS BEYOND AREA OF WORK AND CLEAN ALL SURFACES AT COMPLETION.

No.	Date	Revision	By:	For:
1	AUG 2022	RE-ISSUED FOR TENDER	JCW	
2	APR 2022	RE-ISSUED FOR TENDER - CANCELLED	JCW	
3	JUN 2021	ISSUED FOR TENDER - CANCELLED	JCW	
4	JUN 2021	ISSUED FOR TRANSLATION	JCW	
5	NOV 2020	DESIGN FINAL REVIEW - ISSUED FOR BIDDING & BUDGETARY APPROVALS	JCW	

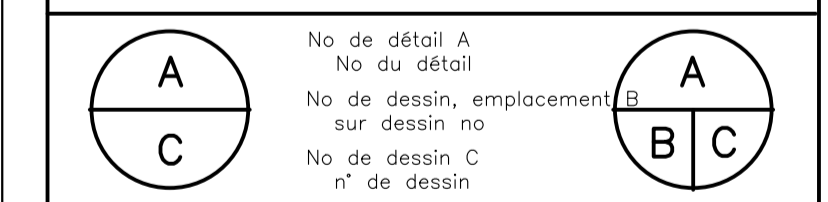
Date Printed

KEY PLAN



MTL CAMPUS KEY PLAN  
 NOT TO SCALE

- Verify all dimensions and site conditions and be responsible for same
- Vérifier toutes les dimensions et l'état des lieux et en assumer la responsabilité



projet  
**Montreal Rd Campus Exterior Vent Enclosure Upgrades**  
 (NOTE: ALL SHEETS TO BE PRINTED IN COLOR)

MONTREAL ROAD CAMPUS

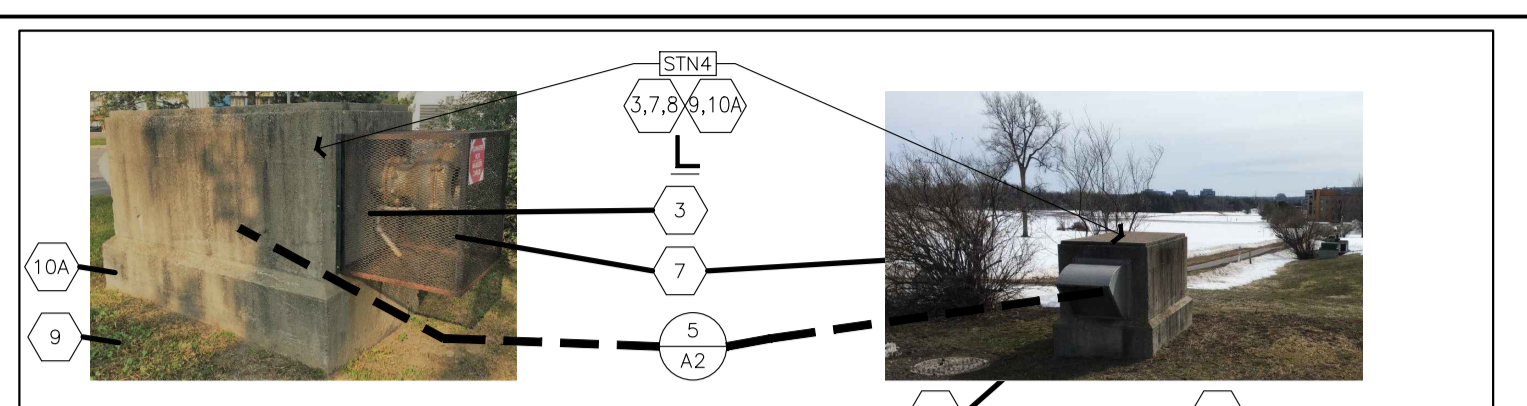
dessin  
 - VENTS / HATCHES 'A', 'B', 'D', 'K', 'L', 'M'  
 - EXTENT OF DAMAGES AND DETERIORATION  
 - SPECIFIC INSTRUCTIONS NOTES

designed	conçu	Date	Date
JCW	JCW	MAY 2021	
drawn	dessiné	scale	échelle
JCW	JCW	AS SHOWN	
checked	vérifié	sheet	feuille
J.L./D.S./M.P.	J.L./D.S.	A1 of/ de A3	
approved	approuvé	W.D.no.	N° d'ordre de travail
J.L./D.S.	J.L./D.S.	A1-011388-01	

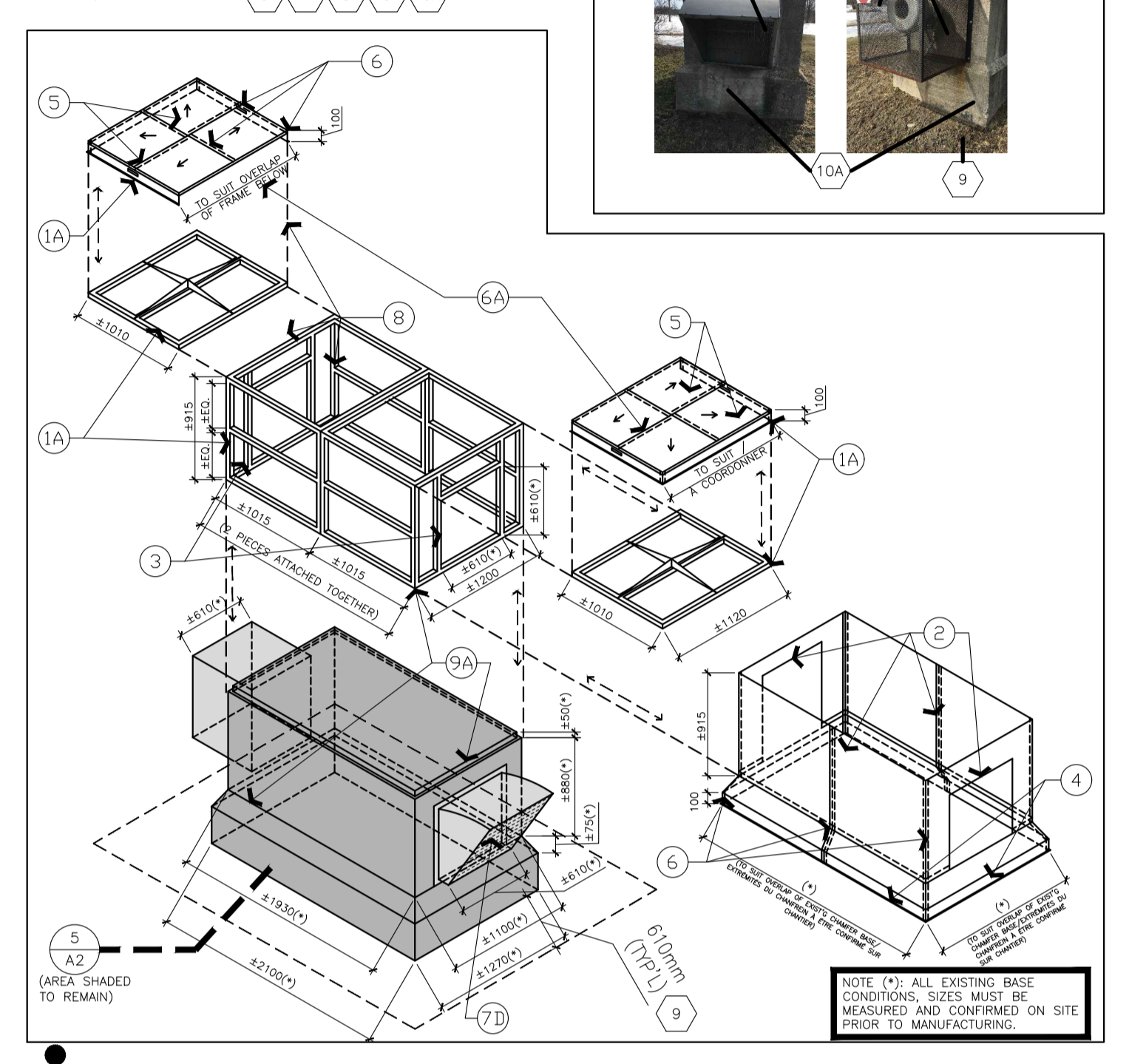
dwg.no. 5876-A2  
 Fichier ACAD 5876-M56VENTS-ARCH-TENDER2022-Rev3a-Alt1.rvt  
 n° de dessin

STEEL ENCLOSURE ASSEMBLY NOTES AND ACCESSORIES

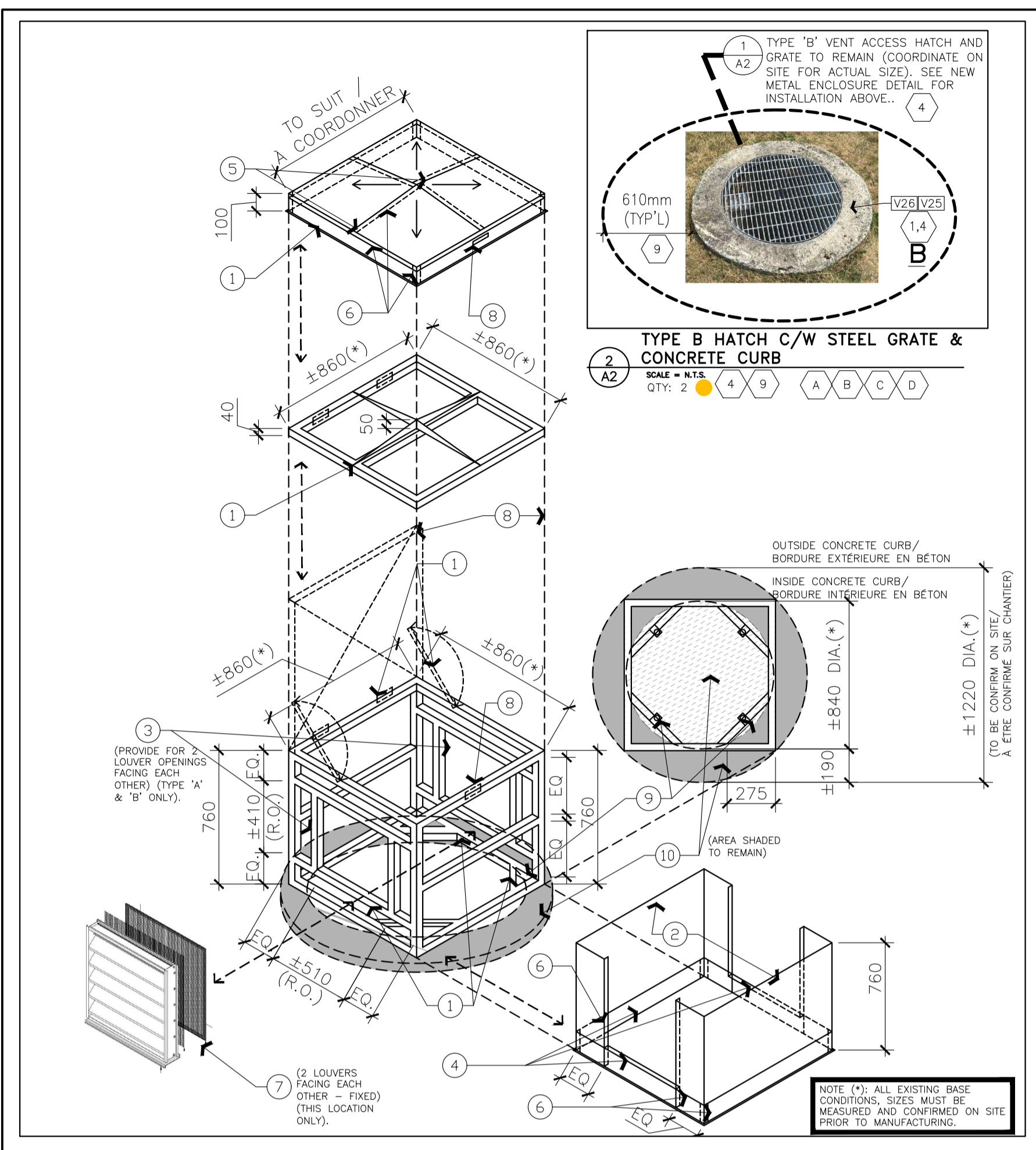
- NEW ENCLOSURE OVERALL SIZE TO BE COORDINATED ON SITE AT EACH LOCATION. ASSEMBLY TO INCLUDE SLOPED CAP AT THE TOP SECURED AND LOCKABLE TO ACCOMMODATE 4-80 TUBULAR HINGE AND SLIDING BRACKET. THE ENCLOSURE TO BE BUILT WITH STRUCTURAL FRAME MADE OF NEW GALVANIZED UNSTRUT 40mmx40mm (1.59") STEEL HOLLOW SQUARE SHAPES. ALL PIECES TO BE SHIP WELDED AWAY FROM SITE AND TO ACCOMMODATE PRE-DRILLED HOLES. ASSEMBLY INCLUDES 4-HOLE HINGES, 2-7 HOLES FITTINGS, BASE PLATE-POSTS, PRE-HOLED FRAMES, BASE PLATES AND NON-CORROSIVE FASTENERS/SCREWS AS PER MANUFACTURERS SPECS.
  - NEW ENCLOSURE SIMILAR TO (1), BUT SIZE TO BE COORDINATED AND MEASURED ON SITE. MOST TOWER TYPE 'D', 'M' & 'K' ARE THE SAME SIZE WITH THE EXCEPTION OF TYPE 'L' & 'S'.
  - PROVIDE NEW OUTER ENVELOP METAL CLADDING TO BE FACTORY PRE-PAINTED FINISH METAL (REFER TO ALL STEEL NOTE BELOW), ALL EDGES TO BE CUT EDGES TO BE INCLUDED. SCREEN METAL SHEETS, IN CONFIGURATION SHOWN, FASTEN WITH SELF-TAPPING WEATHERPROOF SEAL, STAINLESS STEEL, MAX. SPACING 150mm (4") O. C.
  - INSTALL ADPT' VERTICAL TUBULAR STEEL FRAMING (AS PER (1)) TO SUIT R.O. OPENINGS OF NEW LOUVER INSTALLATION (TO SUIT NEW LOUVER ASSEMBLY SIZES). COORDINATE R.O. WITH ACTUAL LOUVER SELECTION AND TOWER TYPE LOCATION. (NOTE: COORDINATE OPENINGS IN NEW ENCLOSURE WITH TYPE 'L' STATION SPECIAL REQUIREMENTS).
  - INSULATED CONTROLLED DAMPER (±510mm x ±510mm) TO BE BROKEN FRAME FRONT-FRAME MOUNT C/W JACK SHAFT AND HAND QUADRANTS. OPPOSED BLADES (CLEAR ANODIZED FINISH). TYPICAL DAMPER INSTALLATION TO ENSURE HANDLES ACCESSIBLE ON OPENING LOUVER PANEL SIDE. ADAPT FLAT HORIZONTAL CONNECTION OF EXTENDED FRAMING TO SUIT BENTON ROUGH OPENING. COORDINATE ON SITE FOR ALL (FOR TYPE 'M' VENT, ADAPT FOR A SMALLER SIZE DAMPER TO SUIT PENETRATIONS BELOW. SEE ALSO NOTE (11)).
  - PROVIDE BOTTOM METAL FLASHING 100mm High WITH DRIP EDGE AT BOTTOM PERIMETER. INSTALL PIECES BEHIND MAIN PANELS.
  - TOP CAP ASSEMBLY TO BE PRE-FINISHED SHEET METAL (SEE ALL STEEL NOTES BELOW). PIECES TO BE SLOPED TO ENSURE OUTWARD DRAINAGE. USE GUSSET FITTINGS TO SUIT. SECURE FASTENING TO TOP STRUCTURE ASSEMBLY FOR ALL PIECES. ENSURE PROPER 25mm OVERLAPS OF JOINTS. ENSURE BOTTOM DRIP EDGE AT FULL PERIMETER. ENSURE JOINTS CONTINUOUS CAULK. SAME COLOR OF METAL SHEETS.
  - SAME AS (6). ONE FULL CAP OR TWO PIECES FASTENED AND CAULK TOGETHER AT SEAM. FOR TOWER 'L' ONLY, THESE TWO PIECES CAN BE PRE-ASSEMBLED AS ONE PIECE.
  - NEW STORMPROOF LOUVER ASSEMBLY (±510mm x ±510mm X 50mm) TO BE FLANGE-FRAME MOUNT, C/W JACK SHAFT AND HAND QUADRANTS. PROVIDE BOTTOM EXTENDED ALUMINUM SILL (14G), GALVANIZED STANDARD BIRDSCREEN (14G-INTER CRIMPED ALUMINUM WITH 12mm/12mm MESH). PROVIDE FULL PERIMETER 40mm FLANGE. STAINLESS STEEL FASTENERS. ALL WELDED CONSTRUCTIONS. ALL STAINLESS STEEL.
  - SAME AS (7), BUT LOUVER SIZE AND ROUGH OPENING (R.O.) VARIES.
  - UNLESS NOTED OTHERWISE, SAME AS (7). PROVIDE THREE (3) FIXED LOUVERS AND ONE (1) HINGED LOUVER AT OPENING PANEL (PROVIDE LOCKABLE HARDWARE). ENSURE DAMPER HANDLES INSIDE IS ON THE OPENING LOUVER PANEL SIDE (DAMPER OPERATION FOR OPEN/CLOSE SEQUENCE READY ACCESSIBLE FOR MAINTENANCE).
  - AT TOWER TYPE 'K' ONLY, MAINTAIN METAL PLATES AS IS. COORDINATE CONFIGURATION OF FRAMING TO SUIT EXISTING METAL PLATES.
  - AT TOWER STATION TYPE 'L' ONLY REPLACE DAMAGED BIRD WIRE SCREEN WITH MATCHING NEW GRILL. COORDINATE SIZE ON SITE. EXISTING LOUVER TO REMAIN.
  - ENSURE TOP CAP ASSEMBLY TO BOTTOM ASSEMBLY FOR SECURED FIT. PROVIDE LOCKABLE HANDLE HARDWARE TO SUIT.
  - THE COMPLETE ASSEMBLY TO BE BOLTED AND SECURED TO EXISTING GALVANIZED HATCH GRATE BELOW. FLUSH WITH ADJACENT CONCRETE CURB WITH METAL REMOVABLE CLAMPS FROM THE INSIDE. ENSURE BOTTOM TUBULAR ASSEMBLY TO HAVE ADPT' L MEMBERS PRE-WELDED TO SUIT ANCHORAGE, INSTALLED AT 45° WITH 275mm OFFSETS FROM CORNERS. ENSURE BOTTOM CAULKING TO SEAL CAPS BETWEEN STEEL TUBE AND CONCRETE.
  - THE COMPLETE ASSEMBLY INCLUDING BASE STEEL PLATE (WHERE APPLICABLE), TO BE SCREWED WITH ADEQUATE STEEL BRACKETS/ANCHORS TO EXISTING CONCRETE BASE. ENSURE BASE IS LEVEL AND FREE OF DEBRIS. ENSURE ANCHORS TO BE 75mm DEEP INTO CONCRETE.
  - TYPE 'A' & 'B' EXISTING GRATE HATCH AND CONCRETE CURB BELOW TO REMAIN. CLEAN THE CONCRETE SURFACE BY PRESSURE WASHING. SEE 2/A01 PICTURE.
  - AT PIPING PENETRATION ADJACENT TO NEW DAMPER, PROVIDE FLAT METAL PLATE WITH PIPE SIZE HOLE TO ACCOMMODATE PIPING PENETRATION INSIDE. CAULK PERIMETER.
  - INSIDE TUNNEL LOCATED IN UPPER CEILING SPACE, REMOVE WOODEN AIR TRAP ASSEMBLY ALLOW FOR DEBRIS CLEANUP AREA THE UTILITY TUNNELS IN THE VICINITY OF EACH VENTS AND HATCHES WORK AREA.
- STEEL NOTE FOR (2,4,5,8). PROVIDE FLAT STOCK 24G TO ALL METAL MATERIAL. -ACCEPTABLE PROVIDERS (IDEALROOFING-VICWEST-KAYCAN-DIMETALS).  
 -ALL FACTORY PRE-FINISHED GALVANIZED STEEL (ASTM-A653/GR50/SS 33)  
 -ALL FACTORY PRE-COATED TO ZINC HOT DIP (GRADE - G90)  
 -ALL PRE-PAINT FINISH IS STONE-GRAY (#8325 LR).



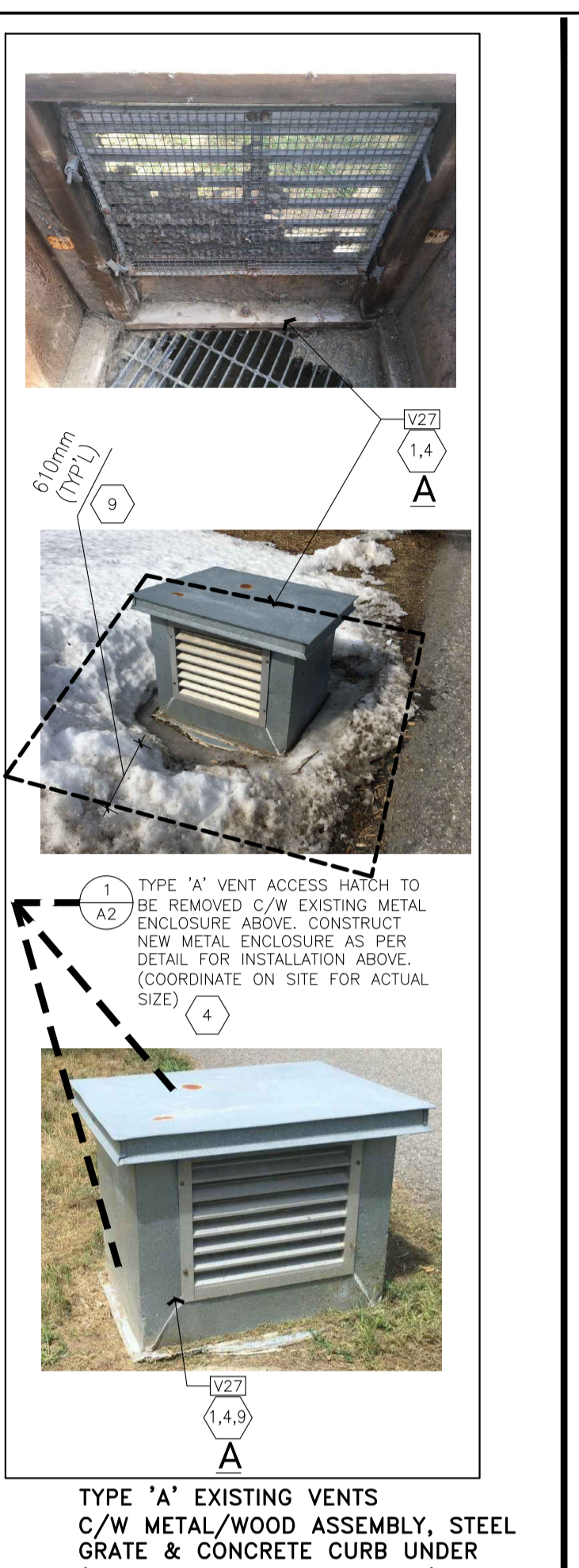
TYPE 'L' VENT STATION - EXTENT OF DETERIORATION AND DAMAGES  
 SCALE = N.T.S.  
 QTY: 1



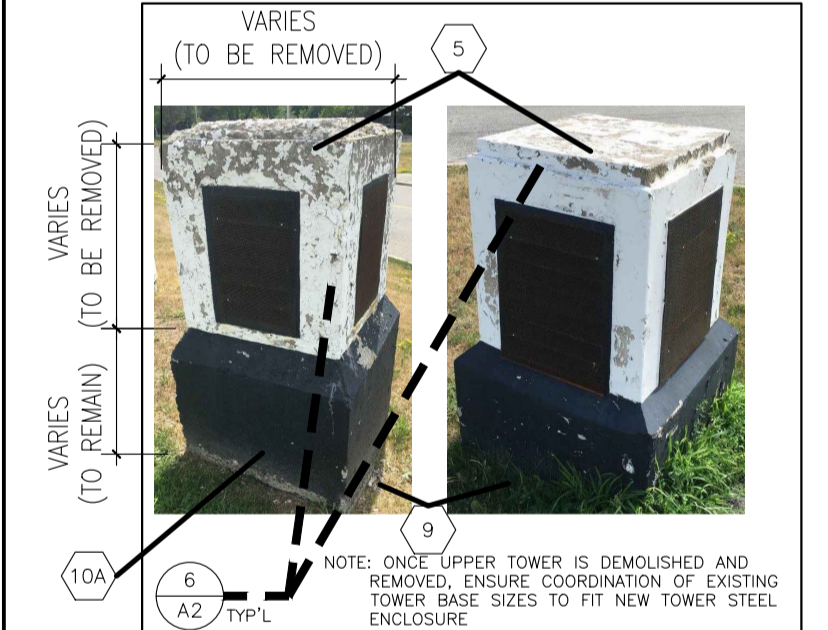
NEW STEEL ENCLOSURE OVER EXISTING VENT HATCHES (STATION TYPE 'L')  
 SCALE = 1:50



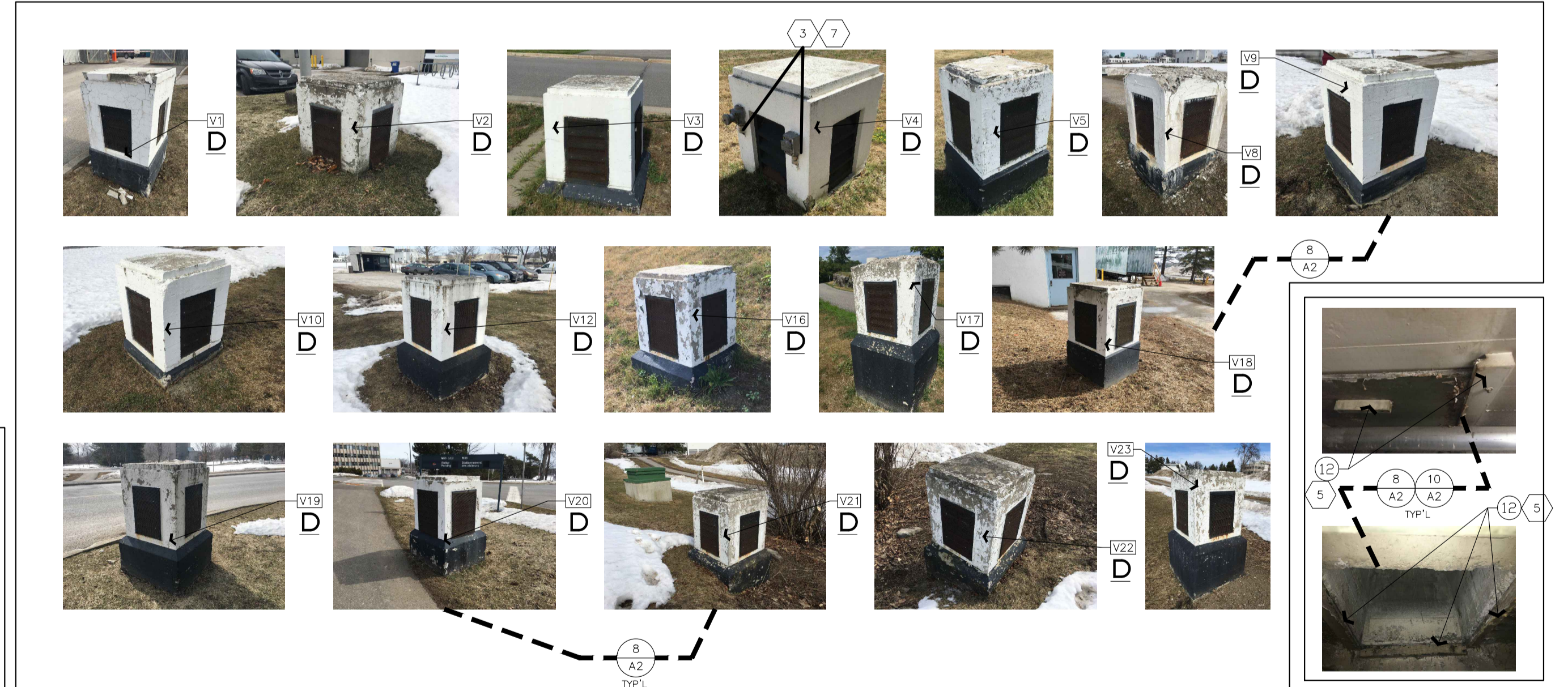
NEW STEEL ENCLOSURE OVER EXISTING GRATE HATCHES (TYPE 'A' & 'B')  
 SCALE = 1:25



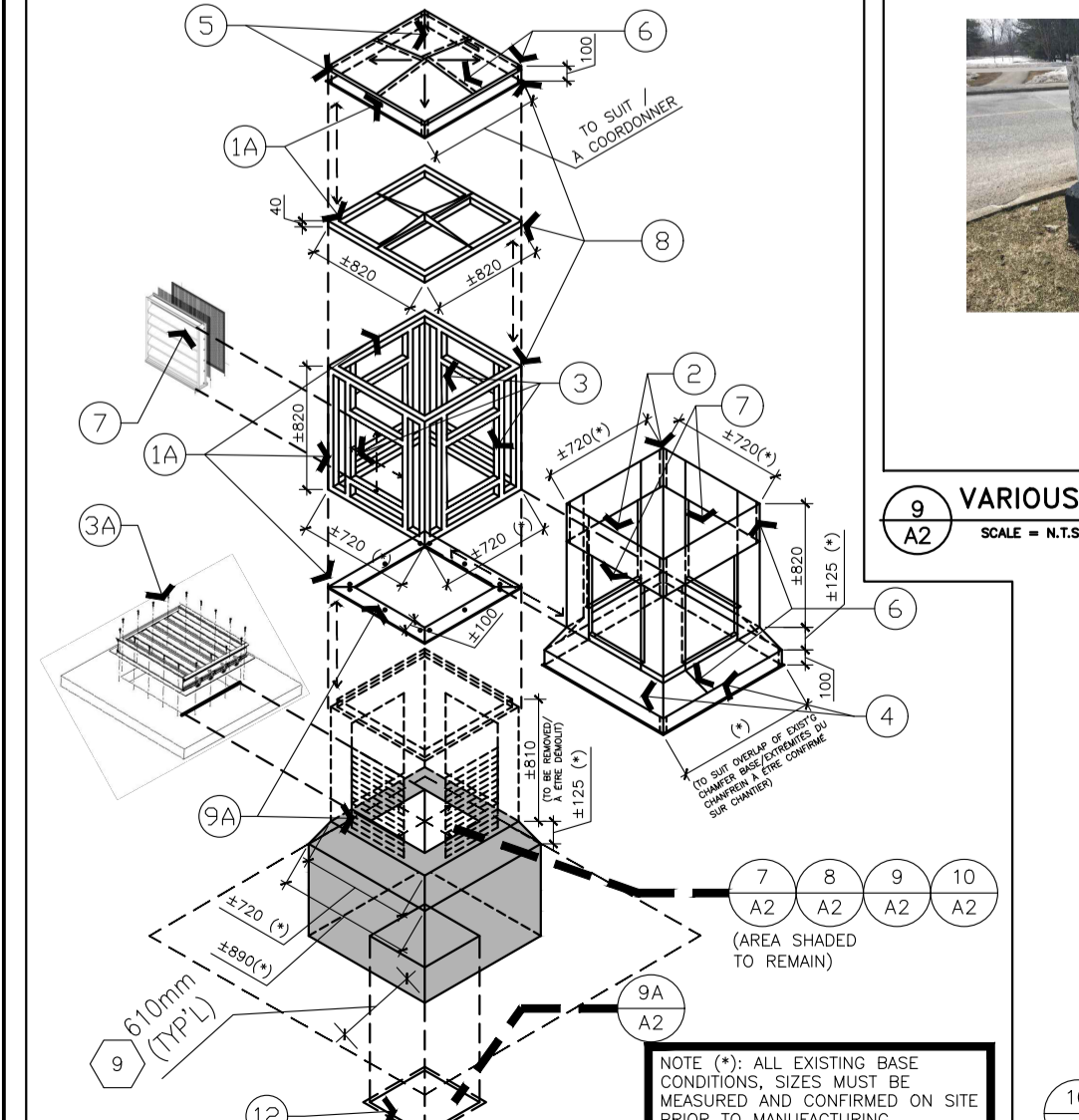
TYPE 'A' VENT ACCESS HATCH TO BE REMOVED C/W EXISTING METAL ENCLOSURE ABOVE. CONSTRUCT NEW METAL ENCLOSURE AS PER DETAIL FOR INSTALLATION ABOVE. (COORDINATE ON SITE FOR ACTUAL SIZE)



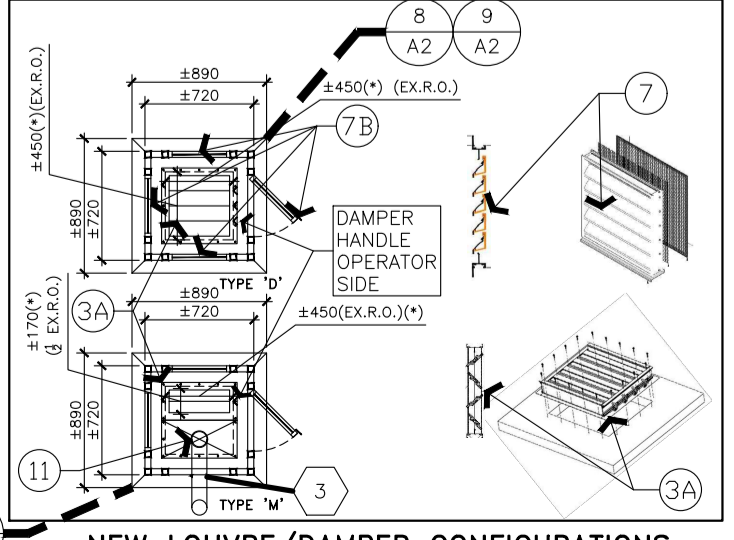
TYPE 'D' TOWER VENTS (TYPICAL)  
 SCALE = N.T.S.  
 QTY: 17



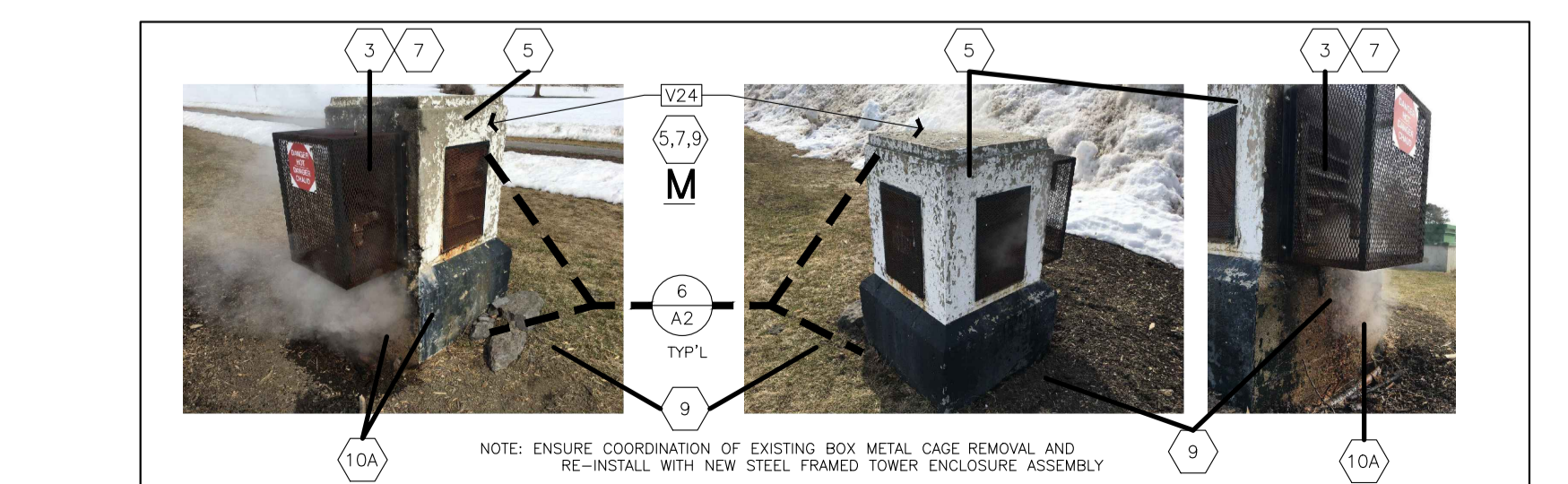
VARIOUS VENT TOWERS (TYPE 'D') - EXTENT OF DETERIORATION AND DAMAGES  
 SCALE = N.T.S.



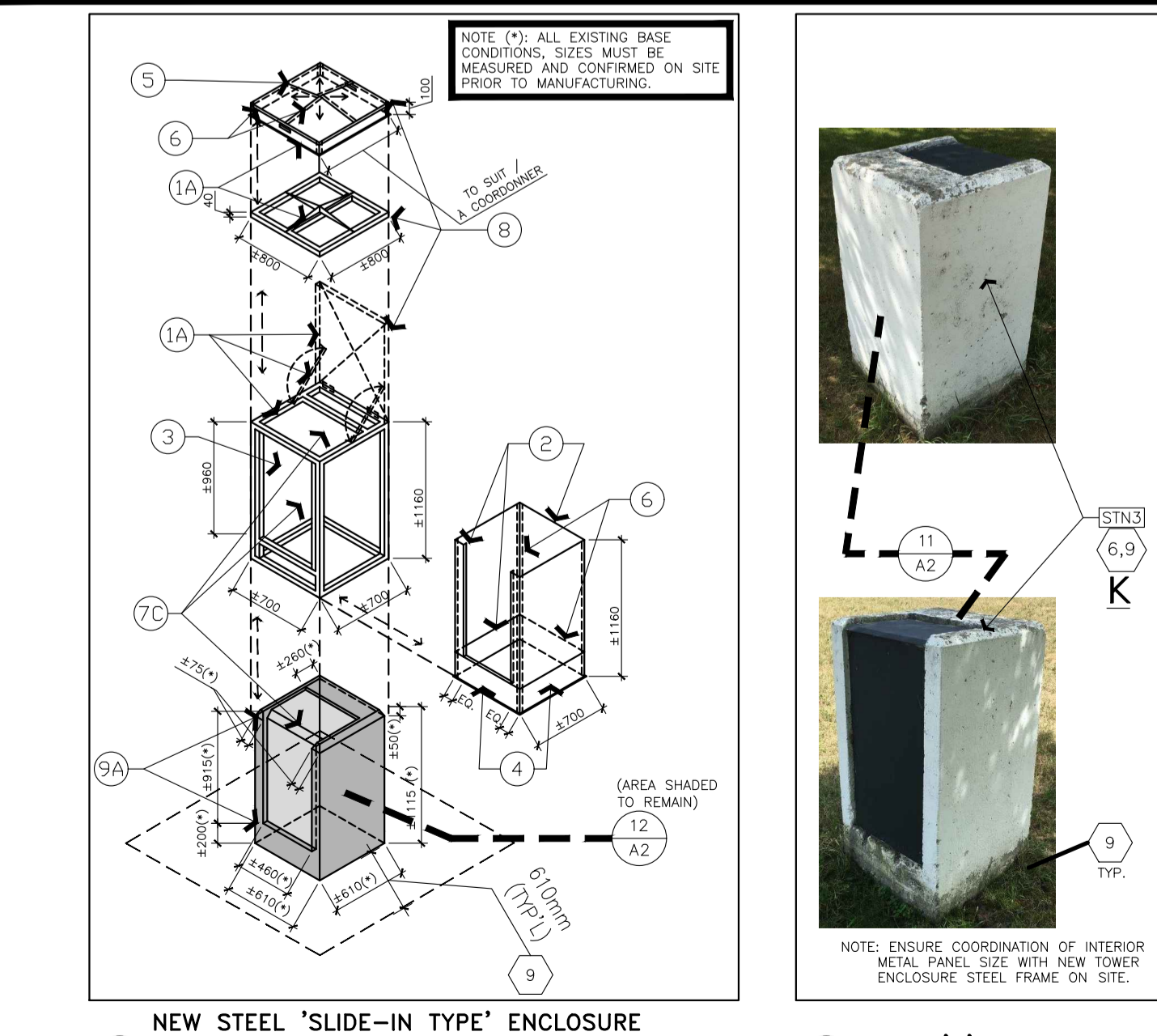
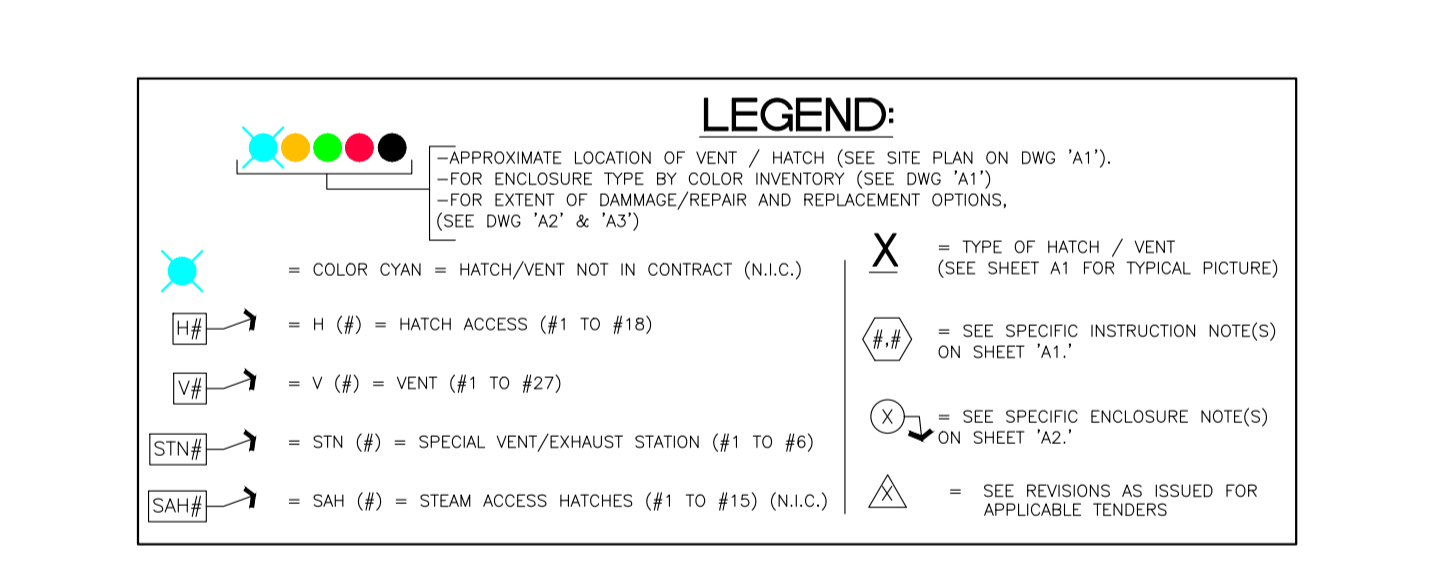
NEW STEEL ENCLOSURE OVER EXISTING VENT (TYPE 'D' & 'M')  
 SCALE = 1:50



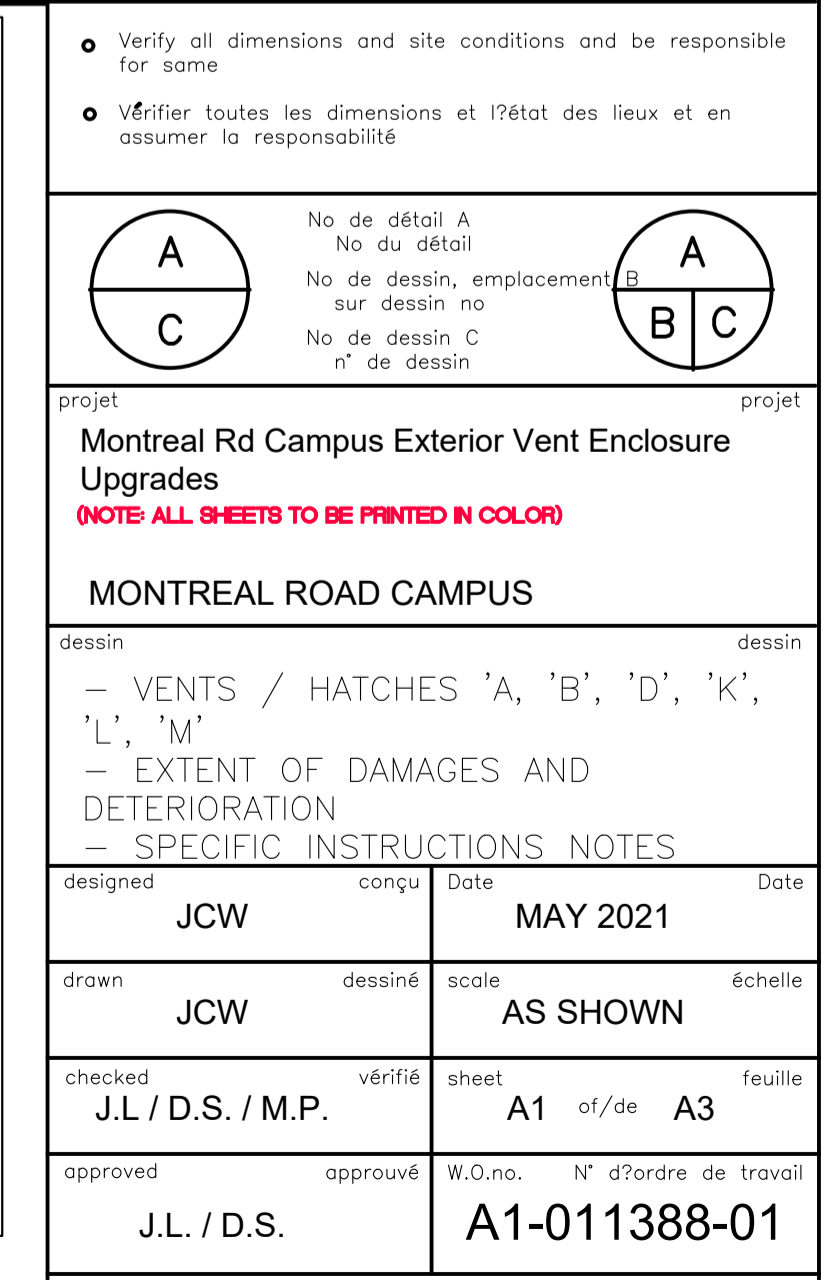
NEW LOUVER/DAMPER CONFIGURATIONS (TYP.) (VENT TYPE 'D' & 'M')  
 SCALE = 1:50



TYPE 'M' TOWER VENTS  
 SCALE = N.T.S.  
 QTY: 1



NEW STEEL 'SLIDE-IN' TYPE ENCLOSURE OVER EXISTING VENT (TYPE 'K')  
 SCALE = 1:50



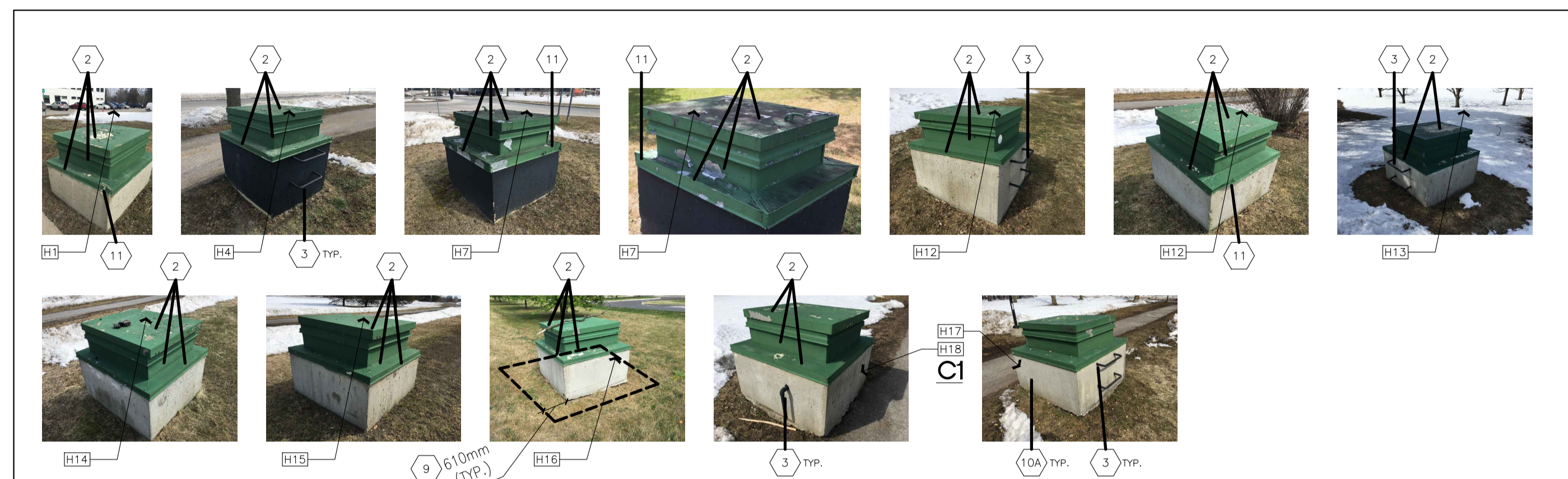
TYPE 'K' TOWER VENTS  
 SCALE = N.T.S.  
 QTY: 1

GENERAL NOTES

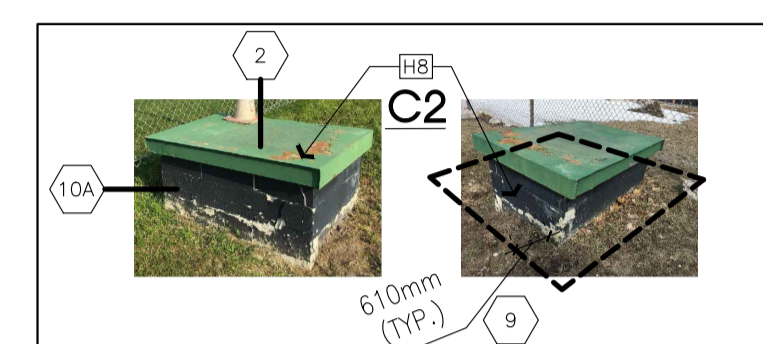
- CONTRACTOR TO VERIFY ALL DIMENSIONS AND CLEARANCES ON SITE PRIOR TO CONSTRUCTION AND REPORT ANY DISCREPANCIES AND/OR OMISSIONS TO DEPARTMENTAL REPRESENTATIVE.
- CONTRACTOR MUST VISIT THE SITE AND FULLY FAMILIARIZE THEMSELVES WITH THE SCOPE OF THE WORK PRIOR TO PROJECT COMMENCEMENT.
- ALL TRADES TO COORDINATE WORK ON SITE, WITH APPROVAL OF DEPARTMENTAL REPRESENTATIVE TO AVOID ANY CONFLICTS AND/OR INTERFERENCE.
- ANY AND ALL REQUIRED SHUTDOWNS SHALL BE COORDINATED WITH DEPARTMENTAL REPRESENTATIVE.
- INSTALLATION OF ALL SYSTEMS SHALL BE IN ACCORDANCE WITH APPLICABLE CODES AND STANDARDS.
- CONTRACTOR TO BE RESPONSIBLE FOR REINSTATEMENT AND REPAIR OF ANY DAMAGE CAUSED BY WORK.
- CONTRACTOR SHALL PREVENT THE SPREAD OF DUST AND DEBRIS BEYOND AREA OF WORK AND CLEAN ALL SURFACES AT COMPLETION.

**LEGEND:**

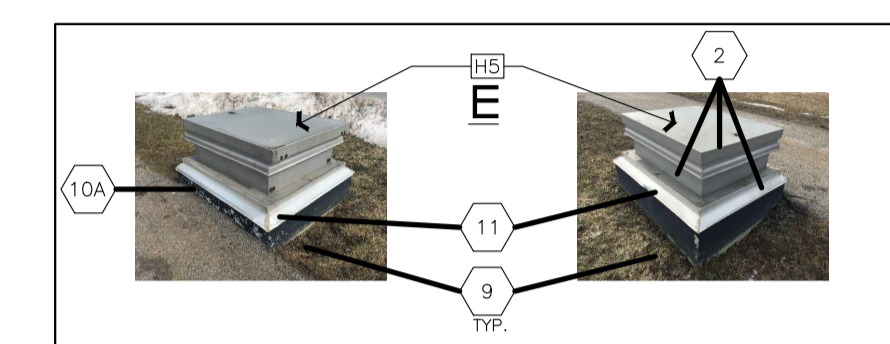
- APPROXIMATE LOCATION OF VENT / HATCH (SEE SITE PLAN ON DWG 'A1').
- FOR ENCLOSURE TYPE BY COLOR INVENTORY (SEE DWG 'A1').
- FOR EXTENT OF DAMAGES/REPAIR AND REPLACEMENT OPTIONS. (SEE DWG 'A2' & 'A3')
- = COLOR CYAN = HATCH/VENT NOT IN CONTRACT (N.I.C.)
- = TYPE OF HATCH / VENT (SEE SHEET A1 FOR TYPICAL PICTURE)
- H# → H (#) = HATCH ACCESS (#1 TO #18)
- V# → V (#) = VENT (#1 TO #27)
- STN# → STN (#) = SPECIAL VENT/EXHAUST STATION (#1 TO #6)
- SAH# → SAH (#) = STEAM ACCESS HATCHES (#1 TO #15) (N.I.C.)
- # → SEE SPECIFIC INSTRUCTION(S) ON SHEET 'A1.'
- X → SEE SPECIFIC ENCLOSURE NOTE(S) ON SHEET 'A2.'
- △ → SEE REVISIONS AS ISSUED FOR APPLICABLE TENDERS



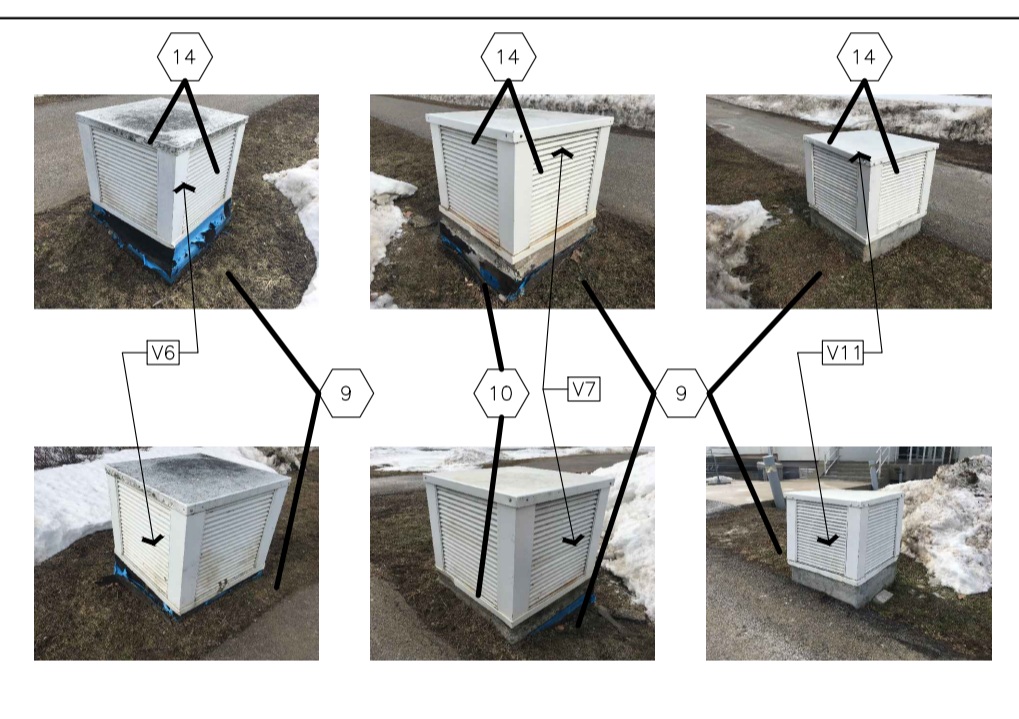
1 TYPE 'C1' ACCESS HATCH – EXTENT OF DETERIORATION AND DAMAGES  
 SCALE = N.T.S. QTY: 10



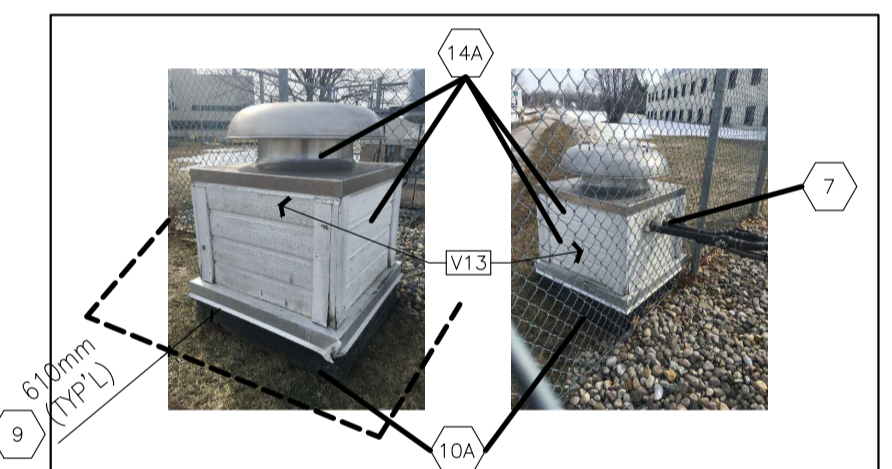
2 TYPE 'C2' ACCESS HATCH – EXTENT OF DETERIORATION  
 SCALE = N.T.S. QTY: 1



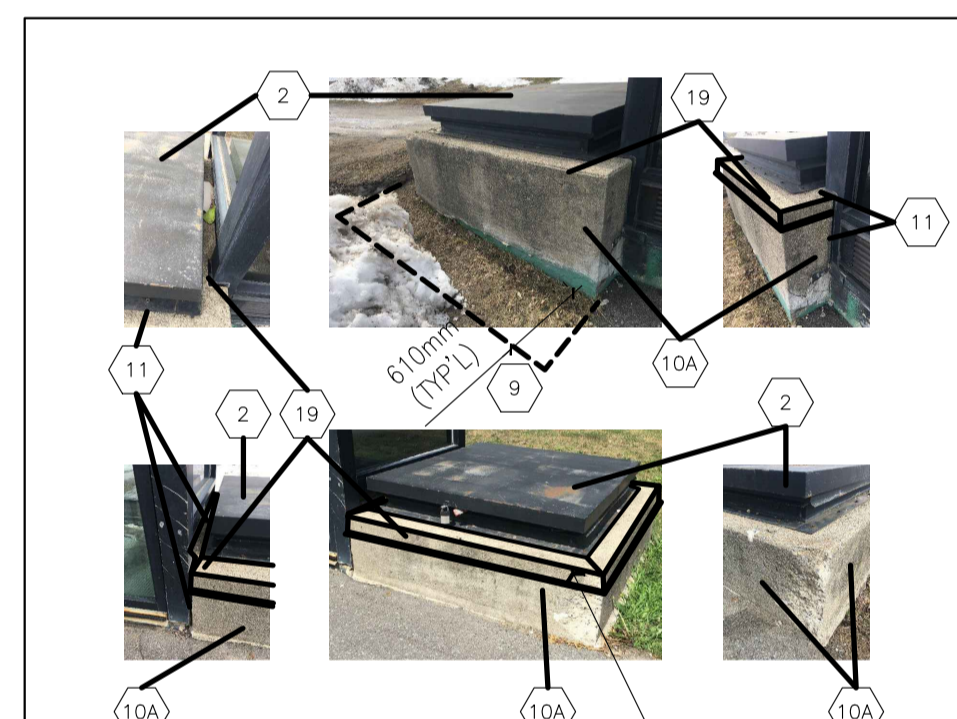
3 TYPE 'E' ACCESS HATCH – EXTENT OF DETERIORATION  
 SCALE = N.T.S. QTY: 1



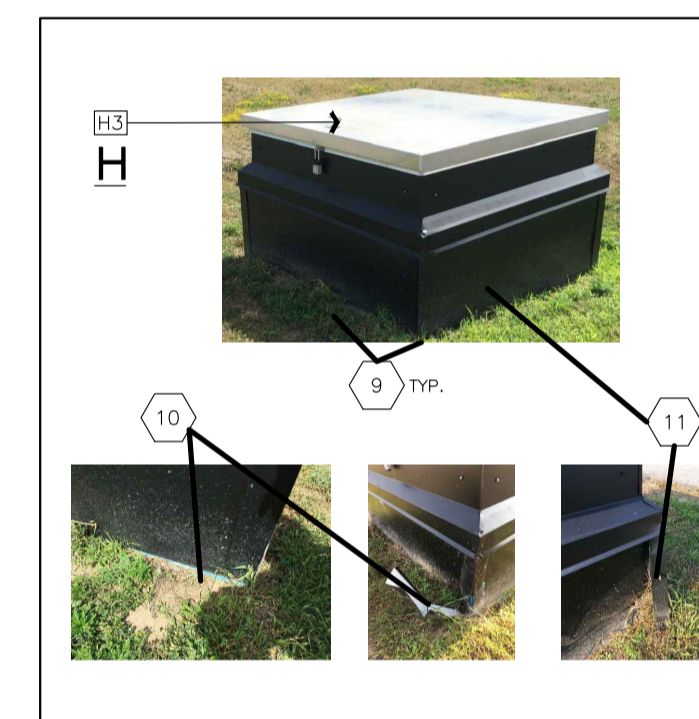
4 TYPE 'F1' VENTS – EXAMPLES OF DETERIORATION AND DAMAGES  
 SCALE = N.T.S. QTY: 3



5 TYPE 'F2' VENTS – EXAMPLES OF DETERIORATION AND DAMAGES  
 SCALE = N.T.S. QTY: 1

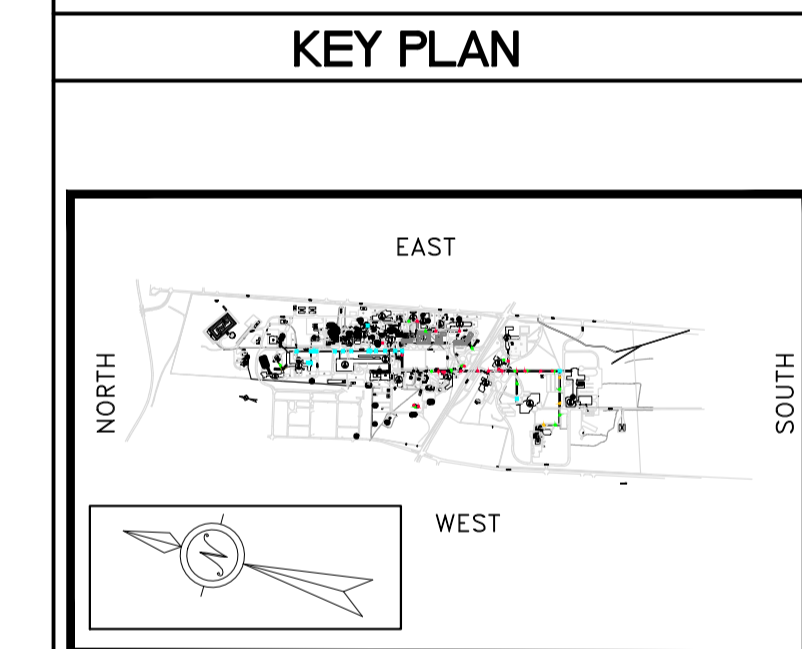


6 TYPE 'G' ACCESS HATCH – EXTENT OF DAMAGES AND DETERIORATION  
 SCALE = N.T.S. QTY: 1



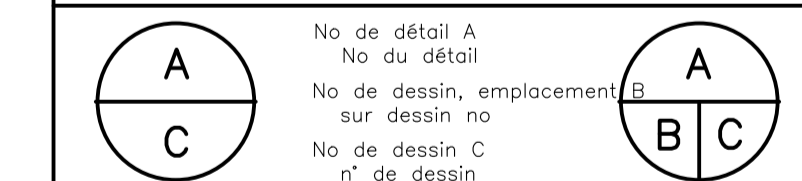
7 TYPE 'H' ACCESS HATCH – EXTENT OF DAMAGES  
 SCALE = N.T.S. QTY: 1

No.	Date	Revision	By:
1	AUG 2022	RE-ISSUED FOR TENDER	JCW
2	APR 2022	RE-ISSUED FOR TENDER – CANCELLED	JCW
3	JUN 2021	ISSUED FOR TENDER – CANCELLED	JCW
4	JUN 2021	ISSUED FOR TRANSLATION	JCW
5	NOV 2020	DESIGN FINAL REVIEW – ISSUED FOR PRICING & BUDGETARY APPROVALS	JCW



MTL CAMPUS KEY PLAN  
 NOT TO SCALE

- Verify all dimensions and site conditions and be responsible for same
- Vérifier toutes les dimensions et l'état des lieux et en assumer la responsabilité



projet Montreal Rd Campus Exterior Vent Enclosure Upgrades  
 (NOTE: ALL SHEETS TO BE PRINTED IN COLOR)

MONTREAL ROAD CAMPUS  
 dessin – VENTS / HATCHES 'C1', 'C2', 'E', 'F1', 'F2', 'G', 'H' – EXTENT OF DAMAGES AND DETERIORATION

designed	JCW	conçu	Date	MAY 2021	Date
drawn	JCW	dessiné	scale	AS SHOWN	échelle
checked	J.L./D.S./M.P.	vérifié	sheet	A1 of/de A3	feuille
approved	J.L./D.S.	approuvé	W.D.no.	N° d'ordre de travail	
				A1-011388-01	
dwg.no.	5876-A3				n° de dessin
	Fichier ACAD 5876-M56VENTS-ARCH-TENDER2022-Rev3a-All.dwg				DA0