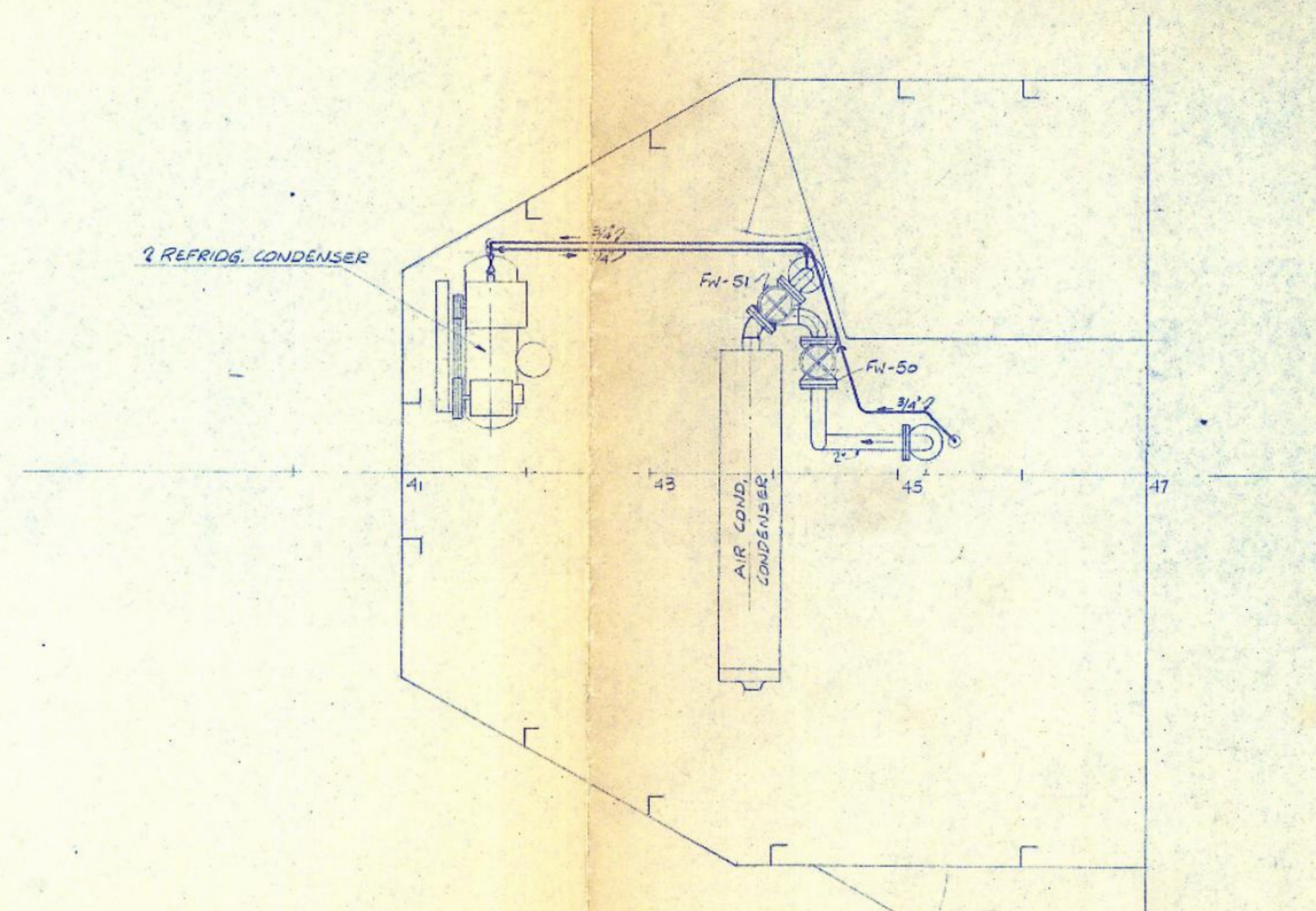
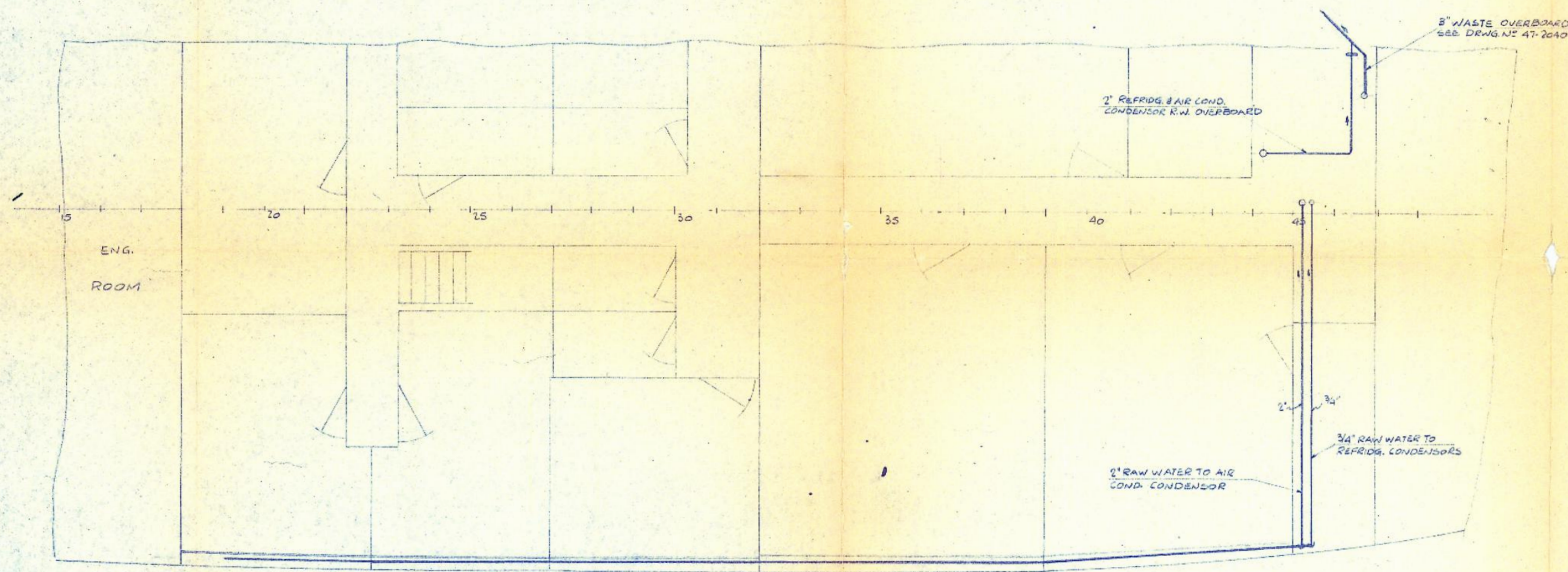


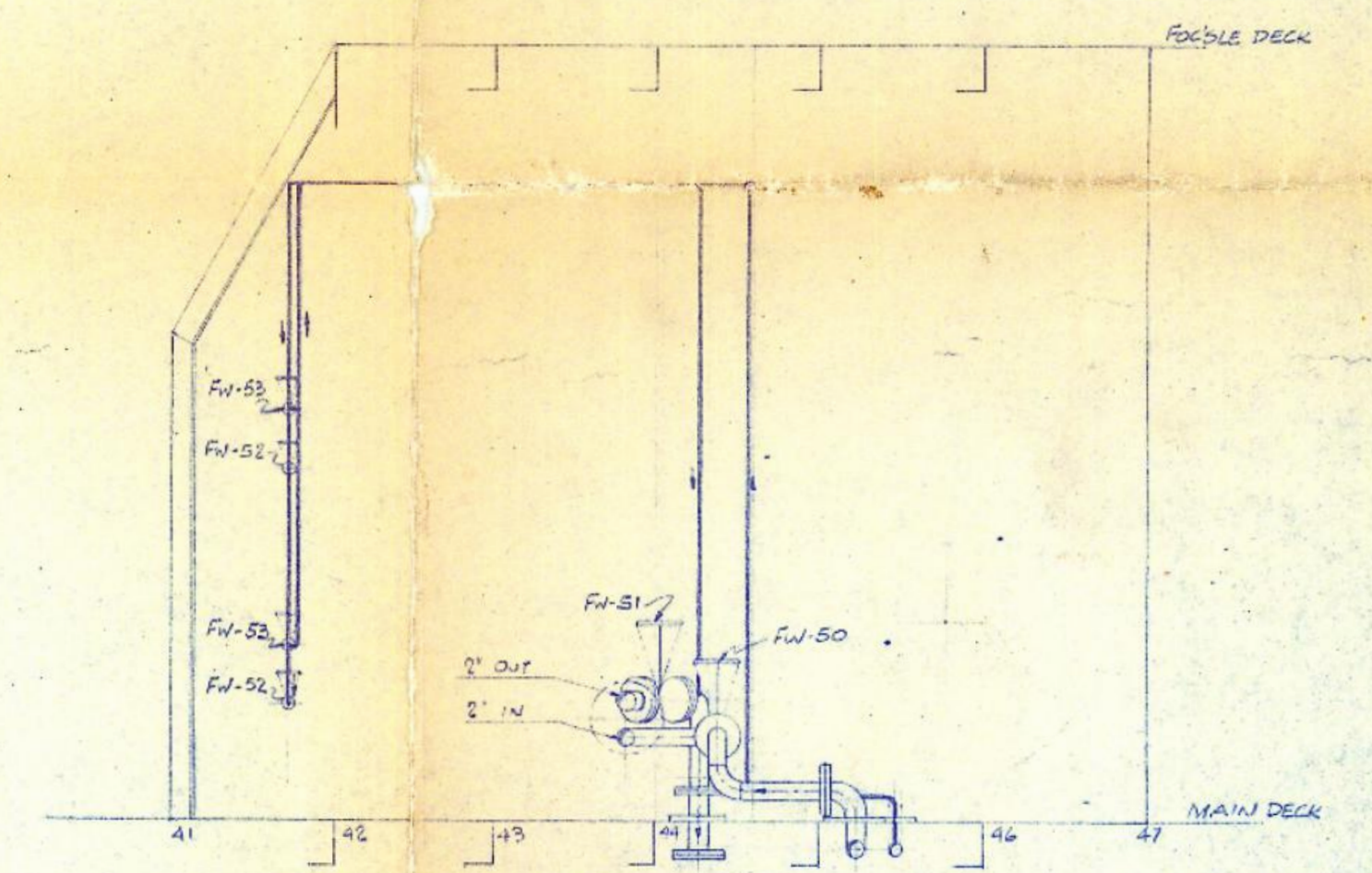
ELEVATION



PLAN VIEW AT FAN ROOM



PLAN VIEW



ELEVATION LOOKING TO PORT

LIST OF VALVES								
FTG. NO.	NO. OFF.	SIZE	PRES.	CONN.	MATL.	DESCRIPTION	PURPOSE	PURCH. NO.
FV-50	1	2"	150"	FLG.	BRONZE	GLOBE VALVE S.L.	AIR COND. CONDENSOR INLET	
FV-51	1	2"	"	"	"	" S.D.N.R.	" " " " OUTLET	
FV-52	2	1 1/2"	"	SCD.	"	" S.L.	REFRIG. CONDENSOR INLET	
FV-53	2	1 1/2"	"	"	"	" S.D.N.R.	" " " " OUTLET	
	12	2"	STD. WEIGHT	BUTT WELD	STEEL	90° ELBOW L.R.		
	18	3/4"	2000"	SOCKET WELD	FORGED STEEL	" " "		
	1	1 1/2" - 3/4"	"	"	"	REDUCER		
	4	1 1/2" - 3/4"	"	"	"	"		
	20	2"	SCD.	GALV.	"	COUPLINGS		
	30	3/4"	"	"	"	"		

1 PIPES TO BE DOUBLE GALVANIZED AFTER FABRICATION AND TESTING.
2 PIPES TO BE TESTED TO 100 PSIG.

MARK	PARTICULARS	DATE
REVISIONS		
APPROVALS		

2030-4

PORT WELLER DRY DOCKS LTD.
ST. CATHARINES, ONTARIO

RAW WATER PIPING ARRGT FOR AIR COND. & REFRDG. UNITS

ACCOUNT No. _____

SCALE 1/4" = 1'-0"; 1/2" = 1'-0"

CHECKED BY T. S. La Roche.

DRAWN BY H. Schuster

APPROVED BY _____

COMPLETED JAN 11th 1969

HULL No. 47

PLAN No. 47-2030-4

DATE	TO	NO. OFF.	DATE	TO	NO. OFF.
ISSUES					