

FOR BIDDING PURPOSES

CABLEWAY UPGRADES & REPAIRS TELKWA RIVER (08EE020)

LIST OF DRAWINGS:

- DWG-01: TITLE BLOCK
- DWG-02: ASSET REMOVAL AND INSTALLATION PLAN
- DWG-03: PLATE ANCHOR AND ROPE ATTACHMENT WITH DETAILS
- DWG-04: STEEL FOOTINGS AND ROPE ATTACHMENTS
- DWG-05: STEEL PLATE ANCHOR DETAILS
- DWG-06: 1975 AS-BUILT DRAWING
- DWG-07: NEW HOME-SIDE AND FAR-SIDE HD A-FRAME

0	ISSUED FOR TENDER	2022-08
---	-------------------	---------

Revision	Description	Date

Project	Projet
---------	--------

**CABLEWAY UPGRADES &
REPAIRS
TELKWA RIVER 08EE020**

Location	Emplacement
----------	-------------

**TELKWA RIVER BELOW
TSAI CREEK
BRITISH COLUMBIA**

Designed by	Conçu par
-------------	-----------

ECCC	ECCC
------	------

Drawn by	Designé par
----------	-------------

ECCC	ECCC
------	------

Approved by	Approuvé par
-------------	--------------

ECCC	ECCC
------	------

ECCC Project Manager	Administrateur de Projets ECCC
----------------------	--------------------------------

Drawing title	Titre du dessin
---------------	-----------------

TITLE BLOCK

Project no./No. du projet	Drawing no./No. du dessin	Revision no.
---------------------------	---------------------------	--------------

2022-01	DWG-01	0
---------	--------	---

ASSET REMOVAL

FOR BIDDING PURPOSES

- NOTES:
- REMOVE MAIN CABLE AND SAFETY LOOPS
 - REMOVE TIE-BACK CABLES
 - REMOVE ANCHOR PLATES AND RODS
 - REMOVE A-FRAMES INCLUDING PLATFORMS, LADDERS, AND ALL OTHER ATTACHED ACCESSORIES
 - REMOVE FOOTINGS FROM UNDERNEATH TOWERS (FOUR FOOTINGS TOTAL)
 - INSTALL NEW 6m HD A-FRAMES INCLUDING NEW PLATFORMS, LADDERS, SAFETY RAILS, PLATFORM GATES, AND ALL OTHER ACCESSORIES ON BOTH BANKS
 - INSTALL NEW MAIN CABLE INCLUDING HARDWARE AND SAFETY LOOPS
 - INSTALL NEW MARKER CABLE INCLUDING HARDWARE
 - INSTALL TWO NEW TIE-BACKS PER BANK INCLUDING HARDWARE
 - INSTALL TWO NEW ANCHOR PLATES AND RODS PER BANK
 - INSTALL NEW BRIDLE SYSTEM ON BOTH BANKS
 - INSTALL NEW FOOTINGS WITH NEW HINGES ON BOTH BANKS
 - INSTALL DANGER SIGNS
 - INSTALL LSU CABLE CAR

SEE STATEMENT OF WORK FOR FULL DESCRIPTION OF WORKS REQUIRED

0	ISSUED FOR TENDER	2022-08
---	-------------------	---------

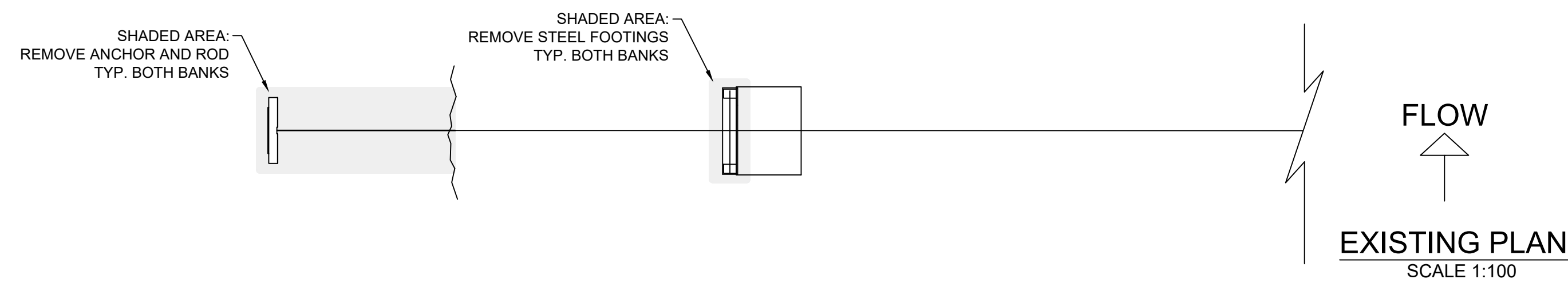
CABLEWAY UPGRADES & REPAIRS
TELKWA RIVER 08EE020

Location: TELKWA RIVER BELOW TSAI CREEK
Emplacement: BRITISH COLUMBIA

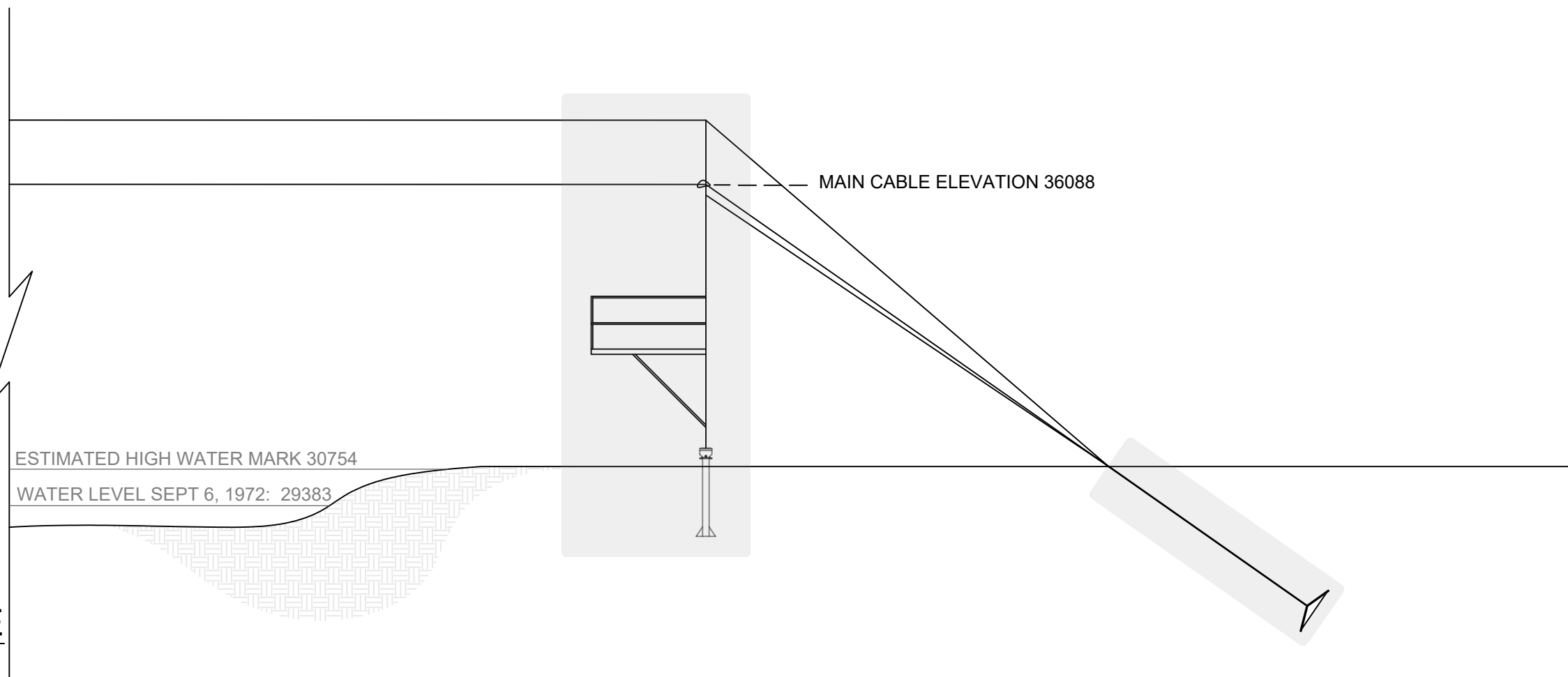
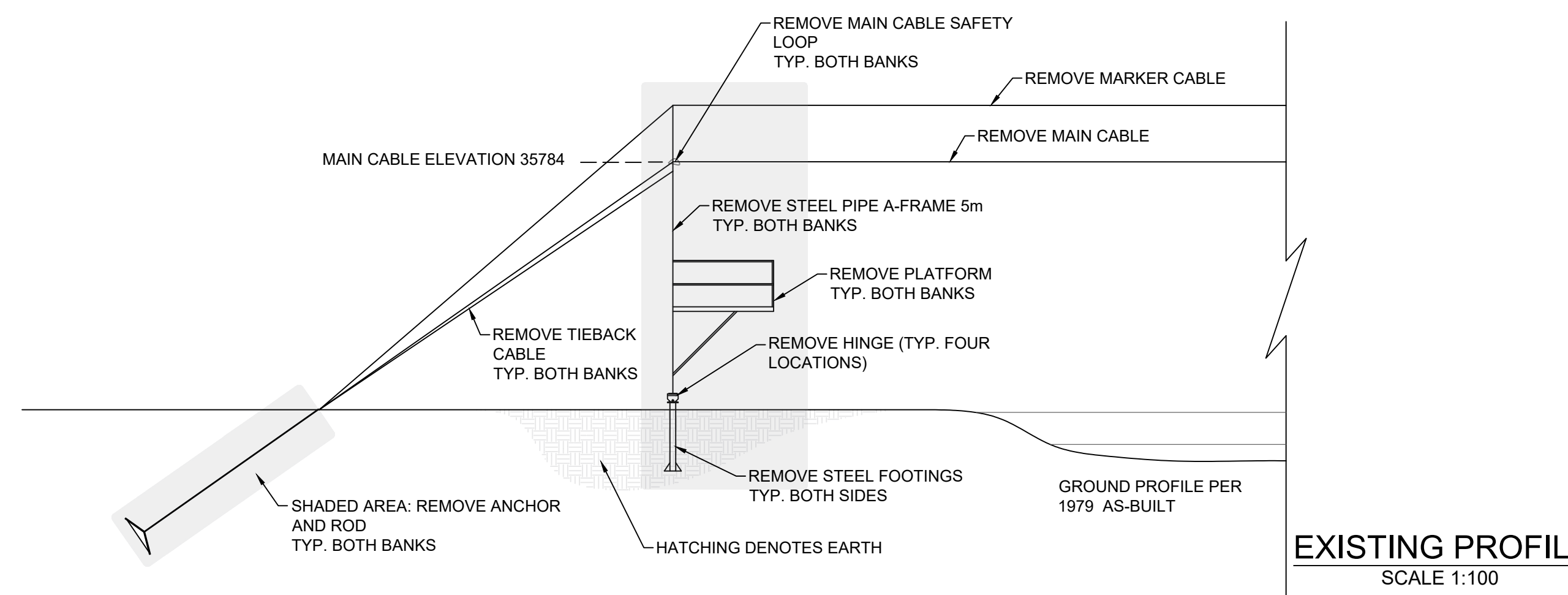
Designed by ECCC	Conçu par ECCC
Drawn by ECCC	Dessiné par ECCC
Approved by ECCC	Approuvé par ECCC
ECCC Project Manager	Administrateur de Projets ECCC
Drawing title	Titre du dessin

ASSET REMOVAL AND INSTALLATION PLAN

Project no./No. du projet	Drawing no./No. du dessin	Revision no.
2022-01	DWG-02	0

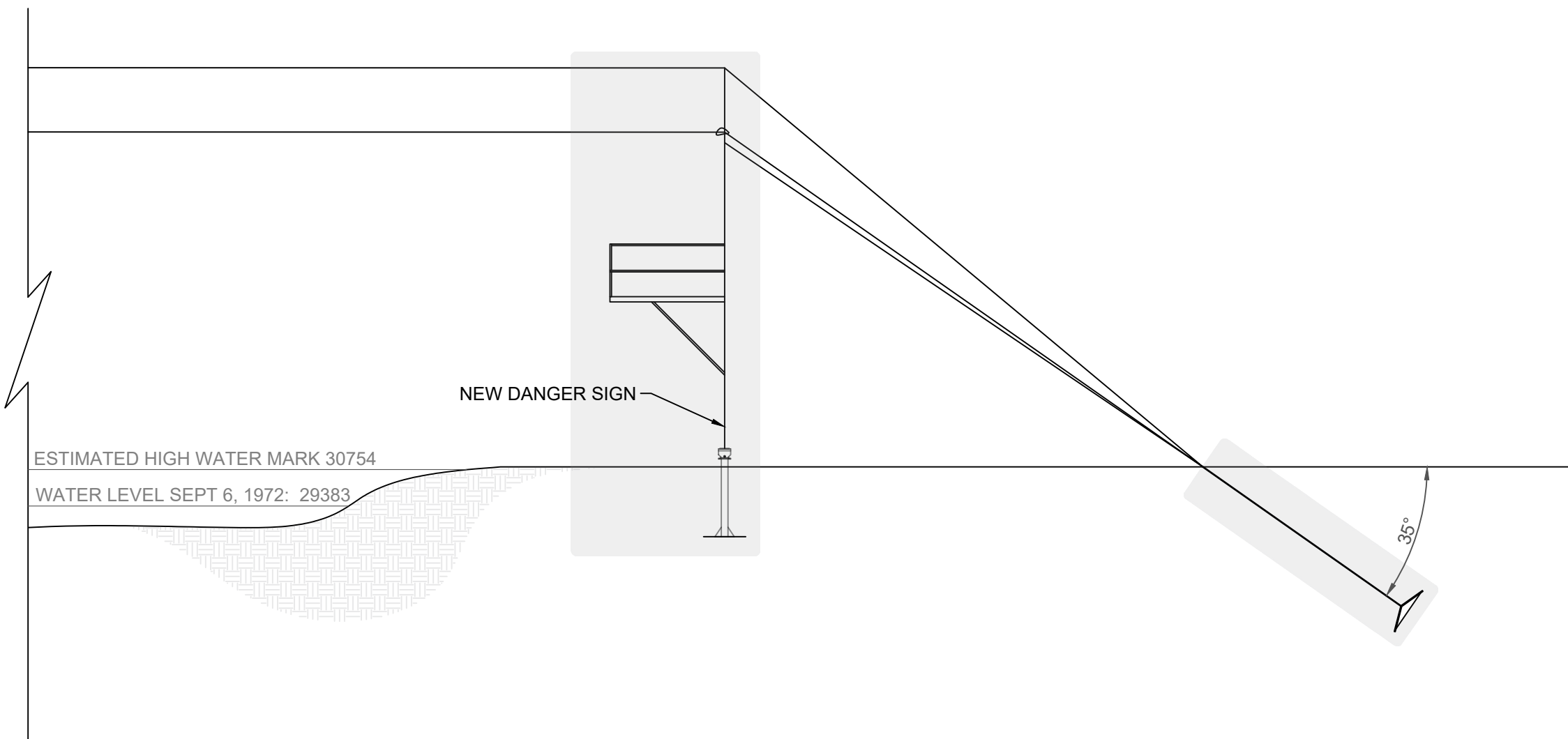
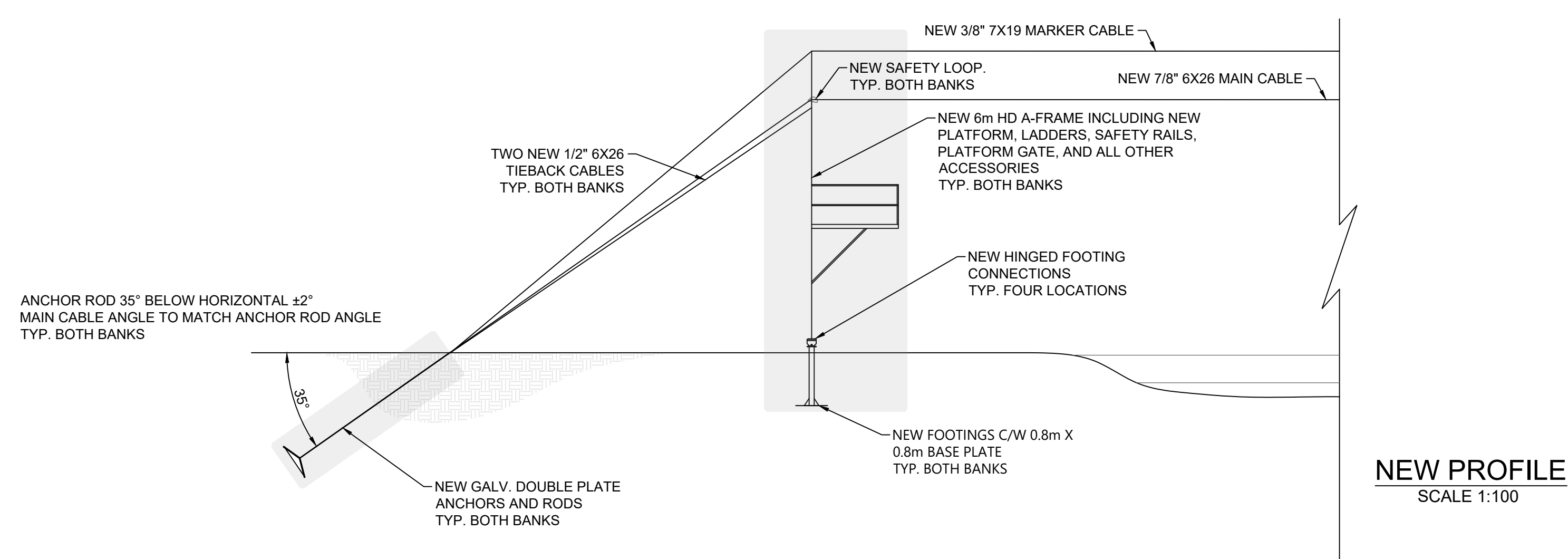
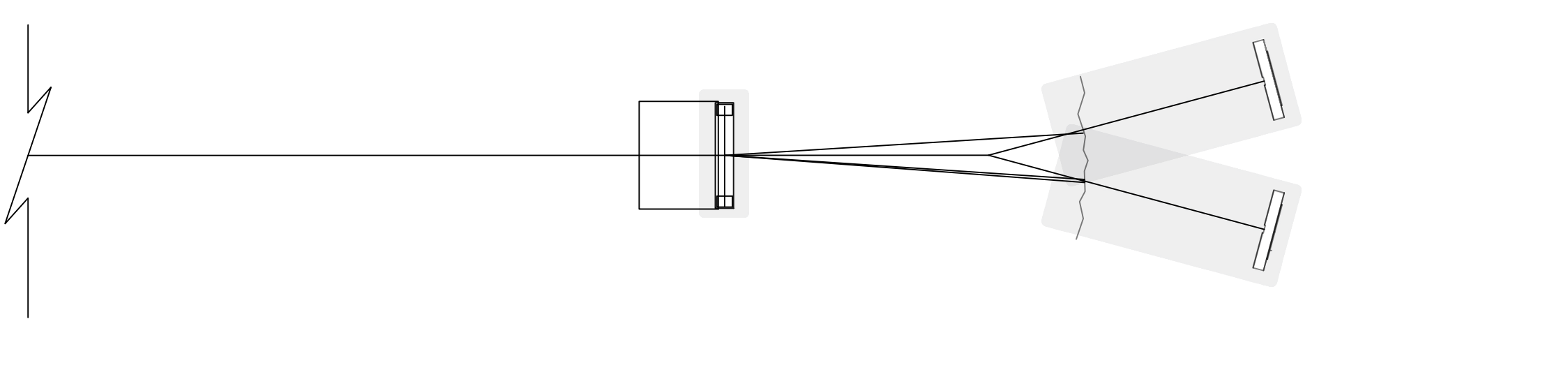
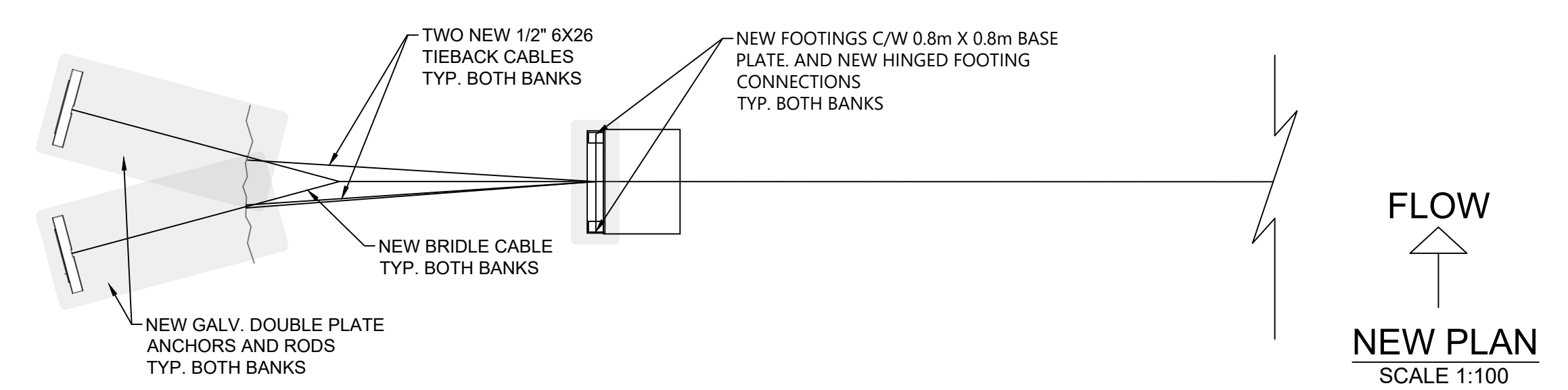


NOTE: EXISTING PLAN SHOWN IS THAT OF A TYPICAL CABLEWAY, NOT THE CABLEWAY AT TELKWA RIVER BELOW TSAI CREEK. FOR EXACT ANCHOR STICKOUT LENGTHS AND ANGLES AT TELKWA CABLEWAY, PLEASE REFER TO STATEMENT OF WORK



NOTE: EXISTING PROFILE SHOWN IS THAT OF A TYPICAL CABLEWAY, NOT THE CABLEWAY AT TELKWA RIVER BELOW TSAI CREEK. FOR EXACT ANCHOR STICKOUT LENGTHS AND ANGLES AT TELKWA CABLEWAY, PLEASE REFER TO STATEMENT OF WORK

ASSET INSTALLATION

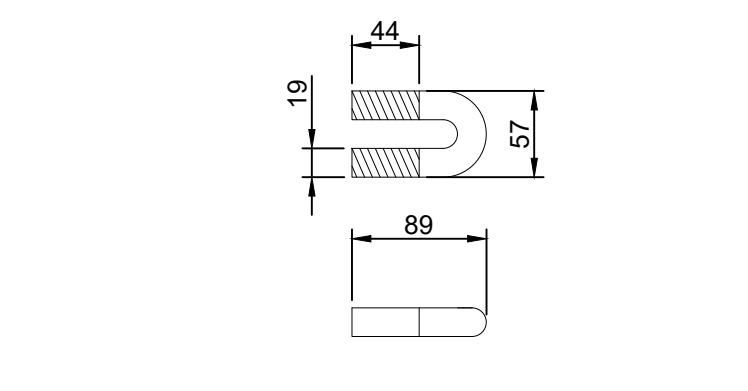
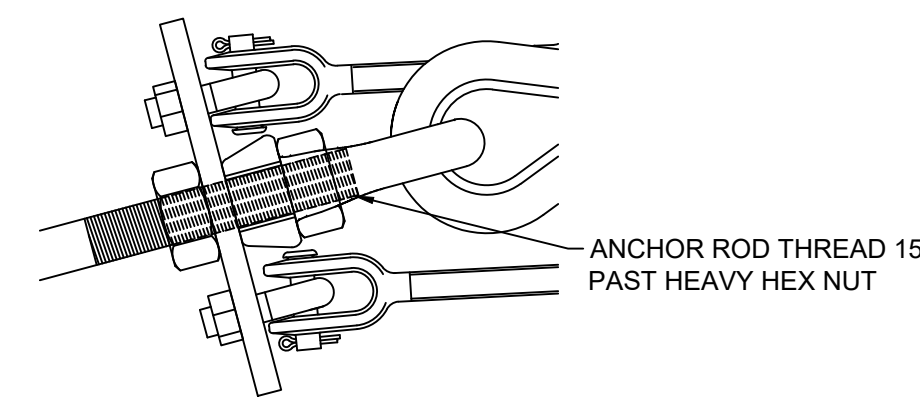
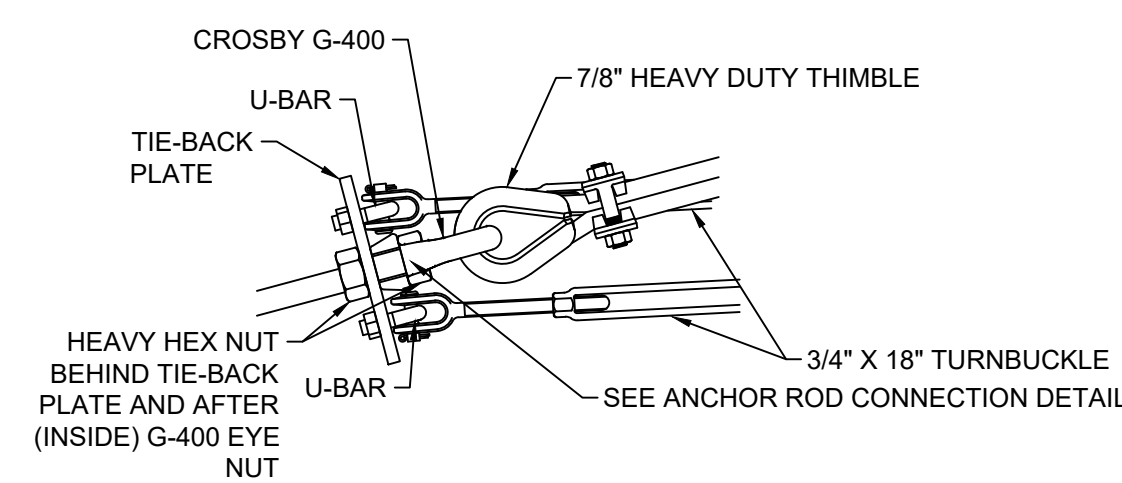
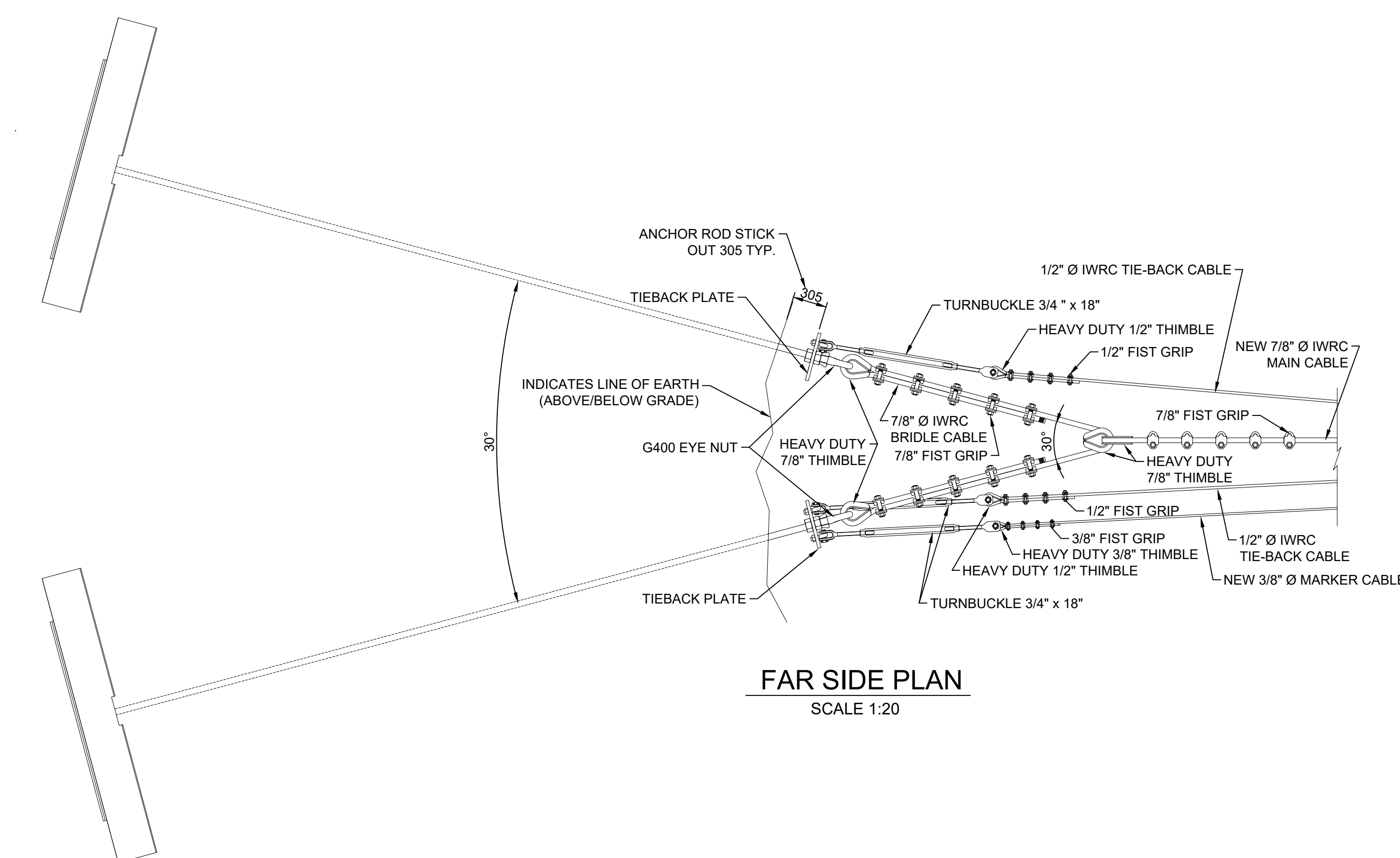
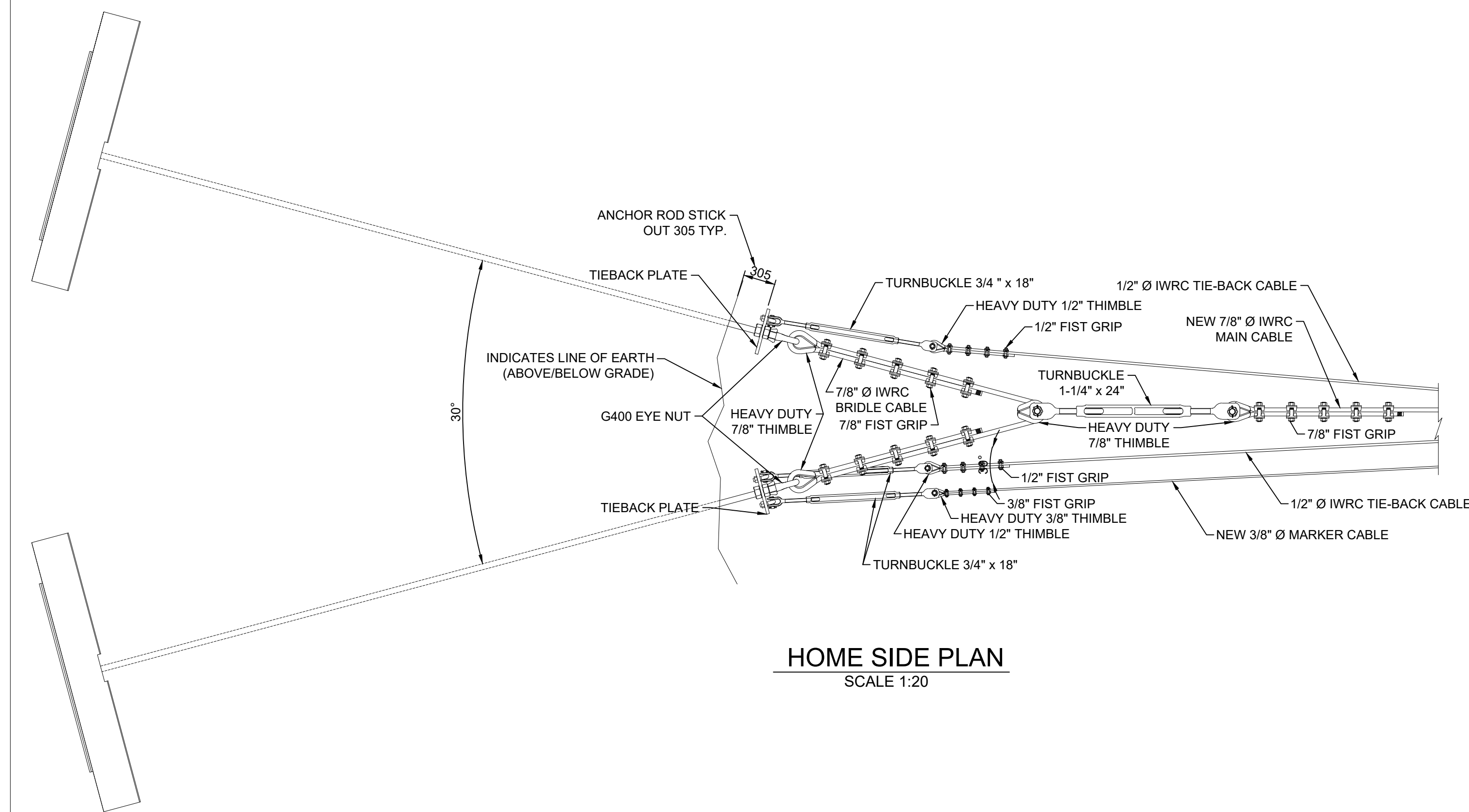
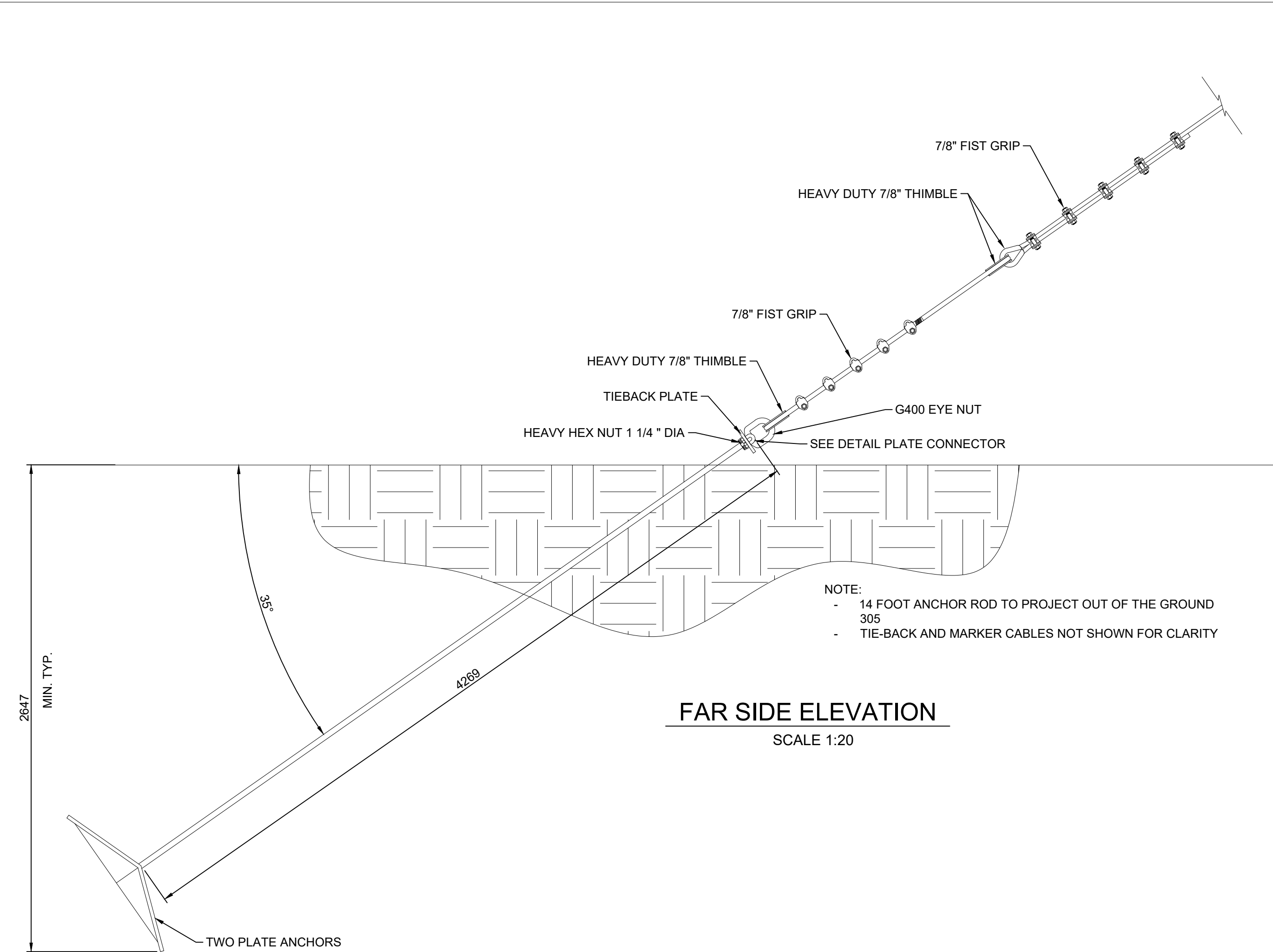
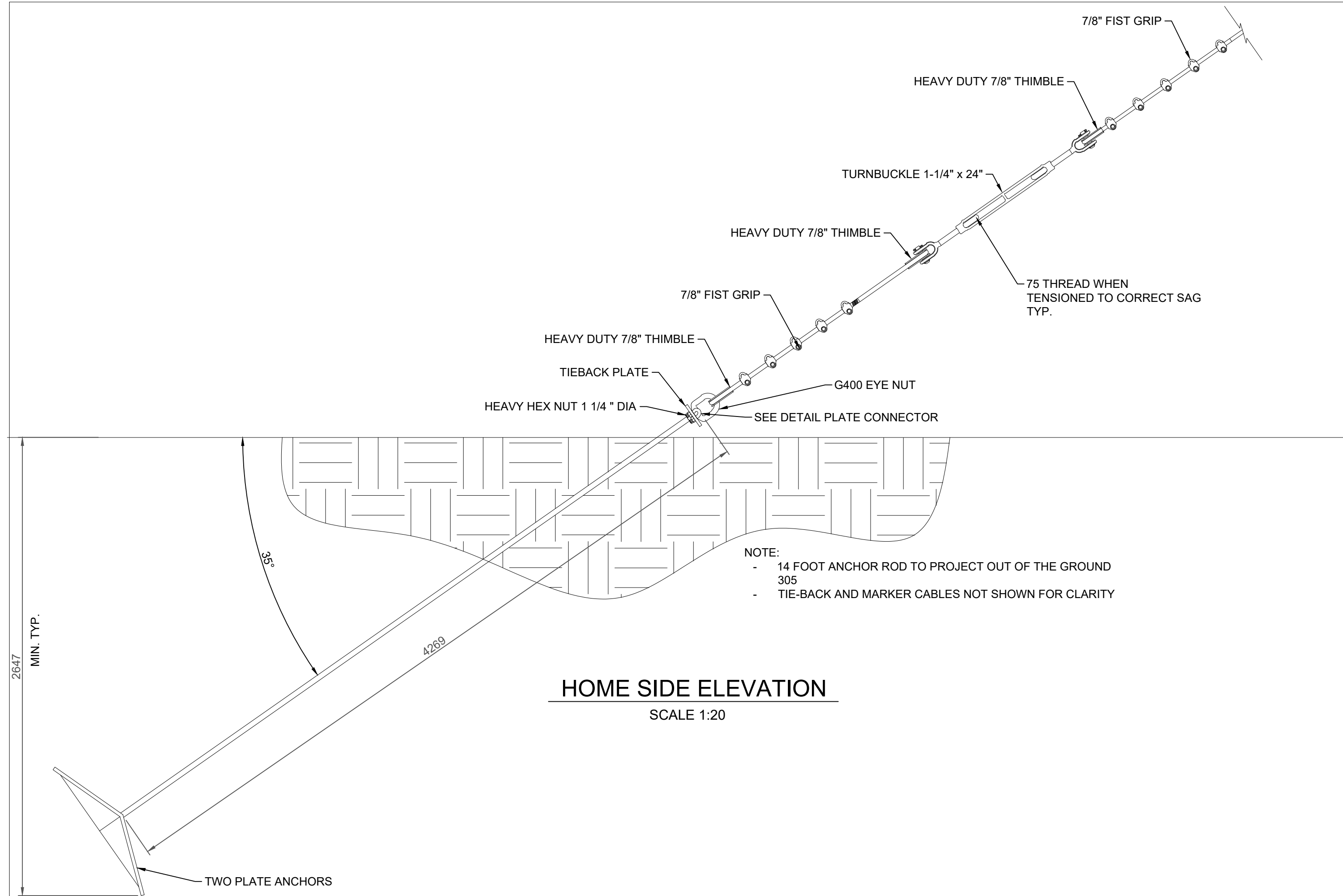


ESTIMATED HIGH WATER MARK 30754
WATER LEVEL SEPT 6, 1972: 29383

NEW DANGER SIGN

FOR BIDDING PURPOSES

- NOTES:**
- ALL DIMENSION IN MILLIMETERS UNLESS STATED OTHERWISE
 - CONTRACTOR TO VERIFY ALL DIMENSIONS PRIOR TO START OF WORK
 - ECCC WILL PLACE THIMBLE AROUND G-400 EYE NUT
 - CONTRACTOR RESPONSIBLE FOR SPARE PARTS REQUIRED TO REPLACE DAMAGED DURING CONSTRUCTION PARTS
 - CONTRACTOR RESPONSIBLE TO PROVIDE ALL WORK/EQUIPMENT REQUIRED TO HAVE FUNCTIONAL CABLEWAY AS INTENDED IN THIS PROJECT



Revision	Description	Date
0	ISSUED FOR TENDER	2022-08

**CABLEWAY UPGRADES & REPAIRS
TELKWA RIVER 08EE020**

Location: TELKWA RIVER BELOW TSAI CREEK
Emplacement: BRITISH COLUMBIA

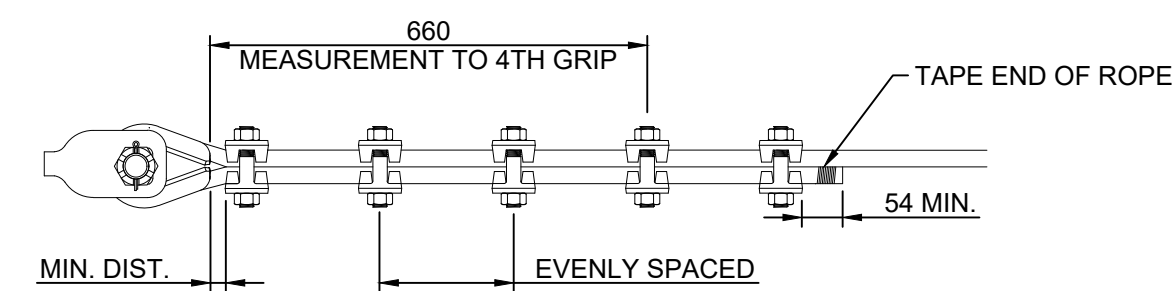
Designed by: ECCC
Drawn by: ECCC
Approved by: ECCC
ECCC Project Manager: ECCC
Administrateur de Projets ECCC: ECCC
Drawing title: TITRE DU DESSIN

PLATE ANCHOR AND ROPE ATTACHMENTS WITH DETAILS

Project no./No. du projet	Drawing no./No. du dessin	Revision no.
2022-01	DWG-03	0

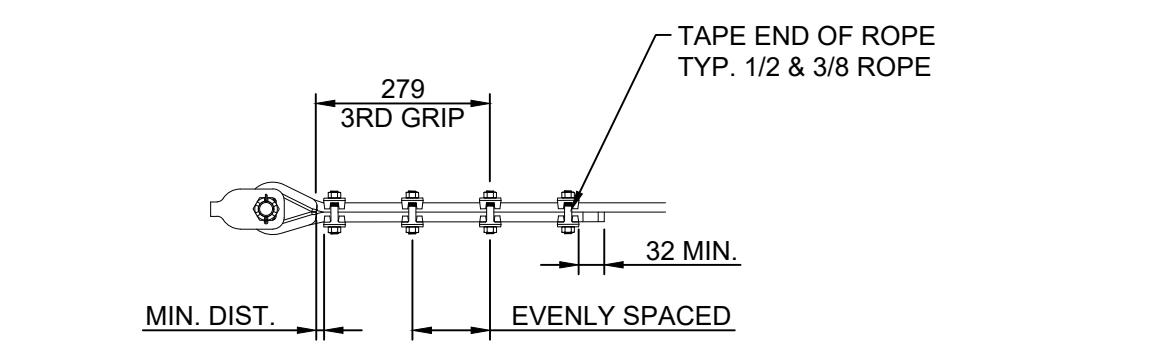
FOR BIDDING PURPOSES

- NOTES:
- ALL DIMENSION IN MILLIMETERS UNLESS STATED OTHERWISE
 - CONTRACTOR TO VERIFY ALL DIMENSIONS PRIOR TO START OF WORK
 - CONTRACTOR RESPONSIBLE FOR SPARE PARTS REQUIRED TO REPLACE DAMAGED DURING CONSTRUCTION PARTS
 - CONTRACTOR RESPONSIBLE TO PROVIDE ALL WORK/EQUIPMENT REQUIRED TO HAVE FUNCTIONAL CABLEWAY AS INTENDED IN THIS PROJECT



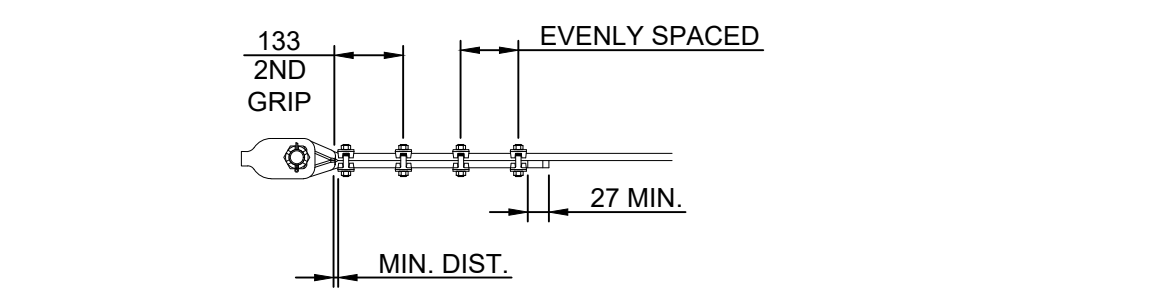
7/8 INCH FIST GRIP SPACING

SCALE 1:10



1/2 INCH FIST GRIP SPACING

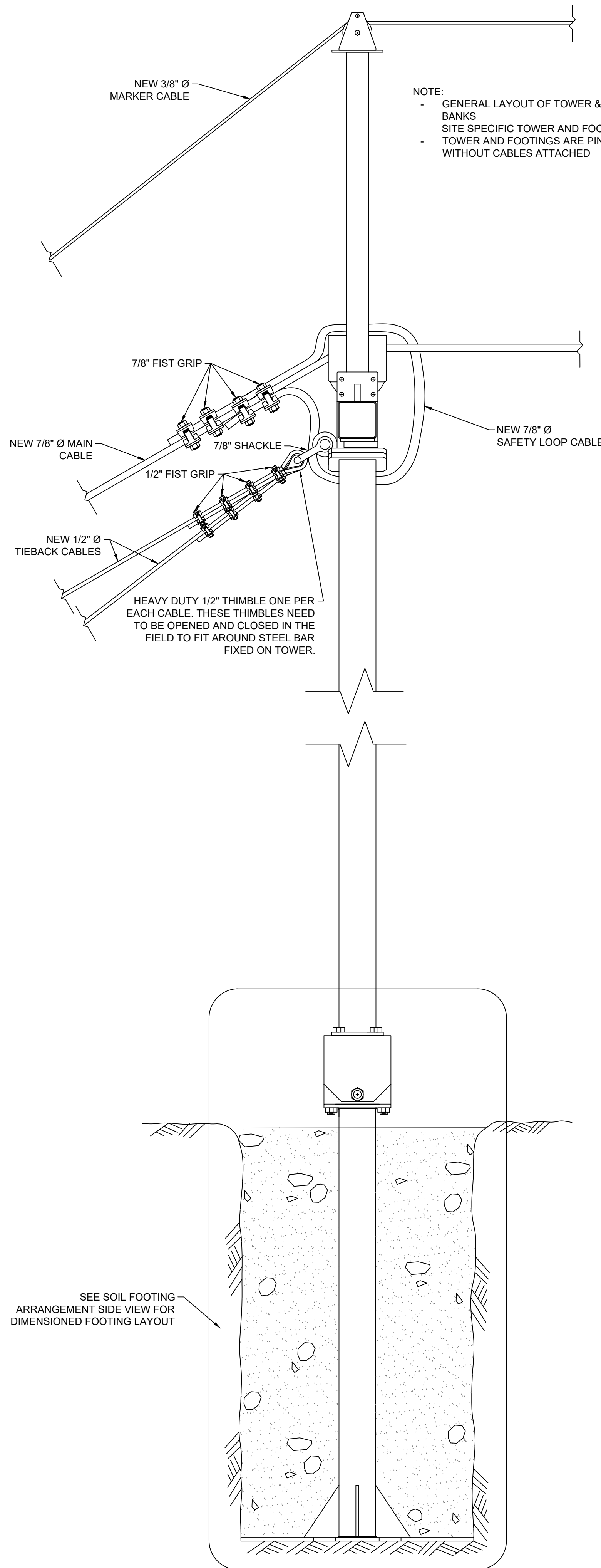
SCALE 1:10



3/8 INCH FIST GRIP SPACING

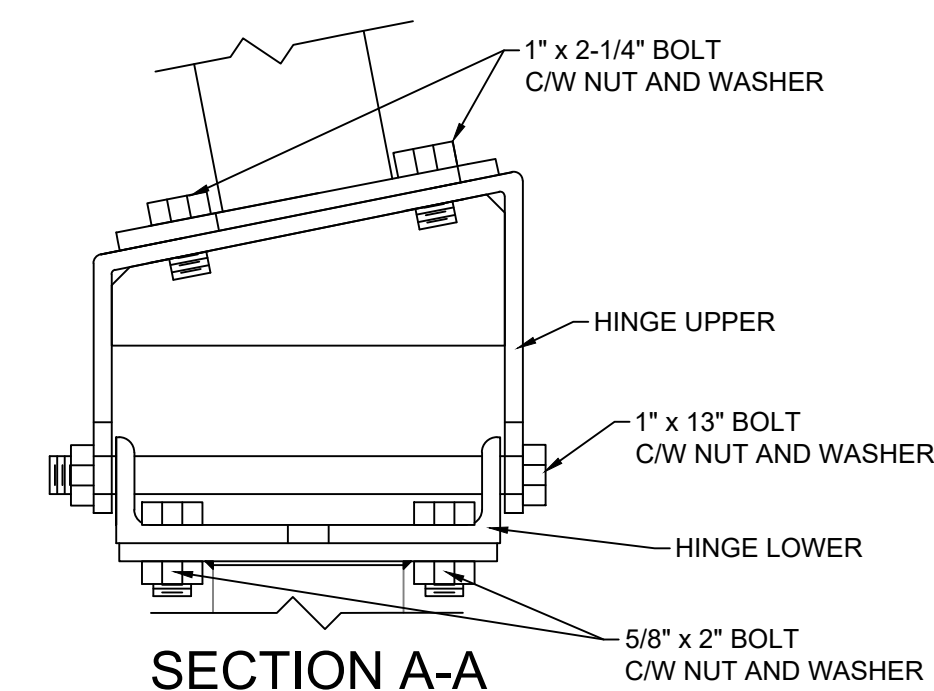
SCALE 1:10

NOTE: MEASUREMENTS TO NTH GRIP ARE TO CONFORM WITH CROSBY CATALOGUE SPECIFICATIONS. TO DETERMINE SPACING BETWEEN ALL GRIPS FOR EACH FIGURE, SUBTRACT MIN. DIST. FROM MEASUREMENT TO NTH GRIP AND DIVIDE BY TOTAL NUMBER OF CLAMPS MINUS ONE (EVEN SPACING)

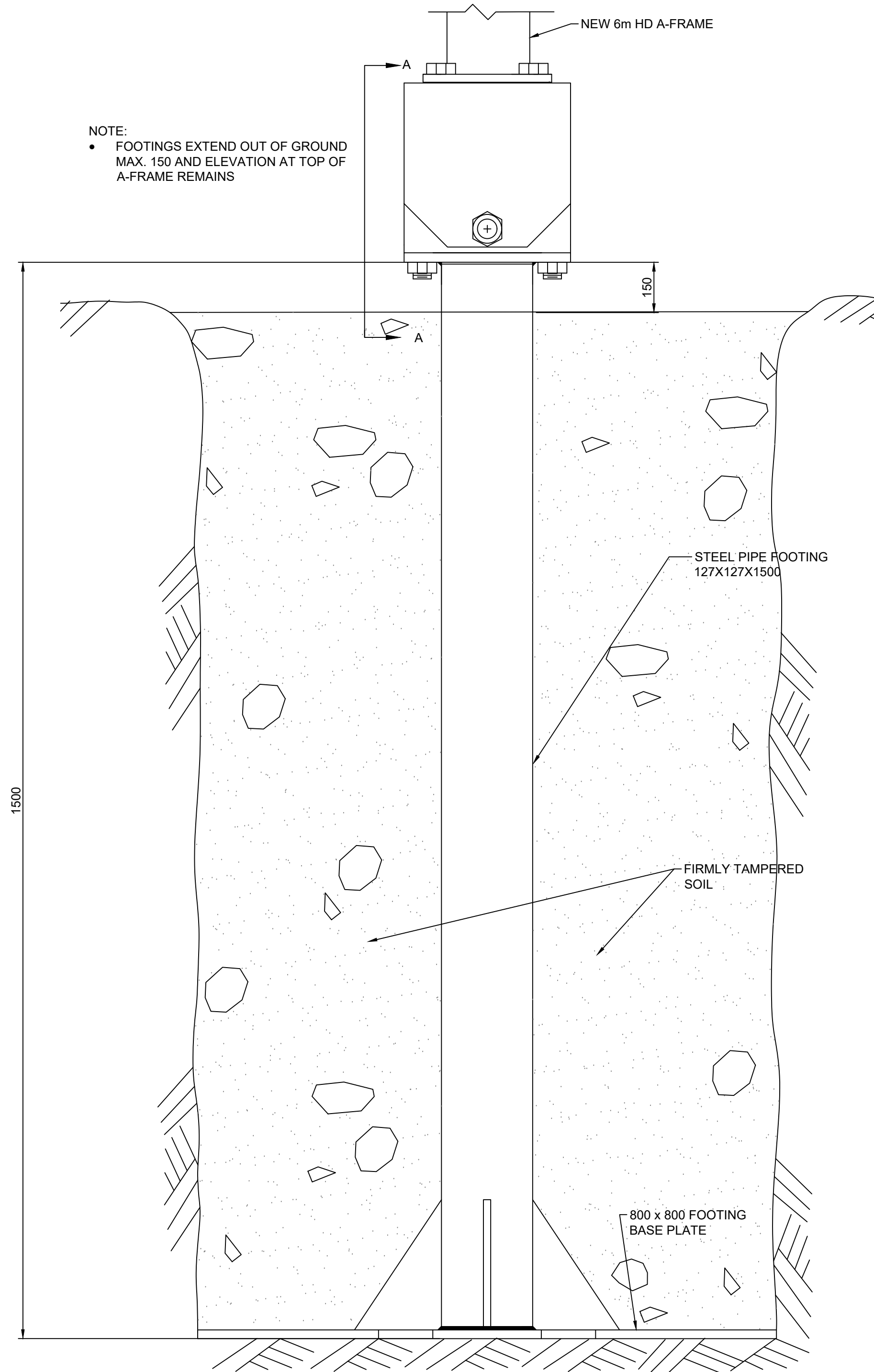


- NOTE:
- GENERAL LAYOUT OF TOWER & FOOTING SHOWN REPRESENTING BOTH BANKS
 - SITE SPECIFIC TOWER AND FOOTING DIMENSIONS MAY VARY
 - TOWER AND FOOTINGS ARE PIN CONNECTED AND ARE FREE TO ROTATE WITHOUT CABLES ATTACHED

TOWER
SCALE 1:10



SECTION A-A
SCALE 1:5



- NOTE:
- FOOTINGS EXTEND OUT OF GROUND MAX. 150 AND ELEVATION AT TOP OF A-FRAME REMAINS

SOIL FOOTING ARRANGEMENT
SIDE VIEW
SCALE 1:5

SEE SOIL FOOTING ARRANGEMENT SIDE VIEW FOR DIMENSIONED FOOTING LAYOUT

0	ISSUED FOR TENDER	2022-08
Revision	Description	Date

Project
**CABLEWAY UPGRADES & REPAIRS
TELKWA RIVER 08EE020**

Location
**TELKWA RIVER BELOW
TSAI CREEK
BRITISH COLUMBIA**

Designed by ECCC	Conçu par
Drawn by ECCC	Dessiné par
Approved by ECCC	Approuvé par
ECCC Project Manager	Administrateur de Projets ECCC
ECCC	ECCC
Drawing title	Titre du dessin

STEEL FOOTINGS AND ROPE ATTACHMENTS

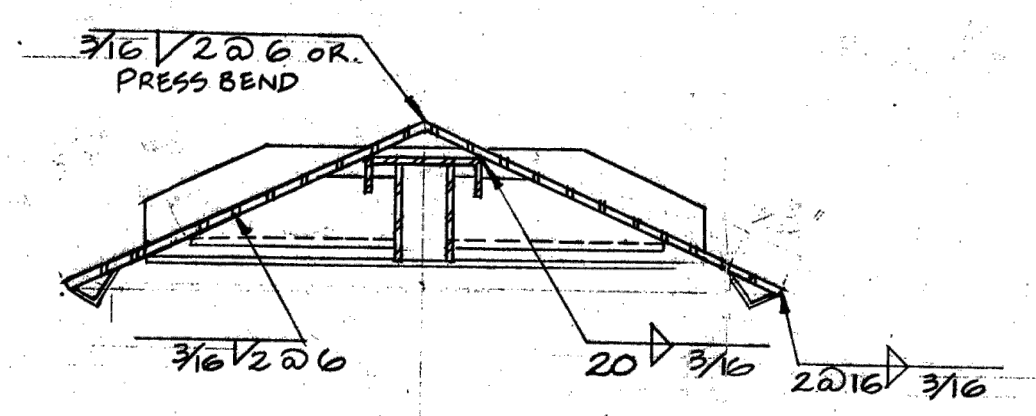
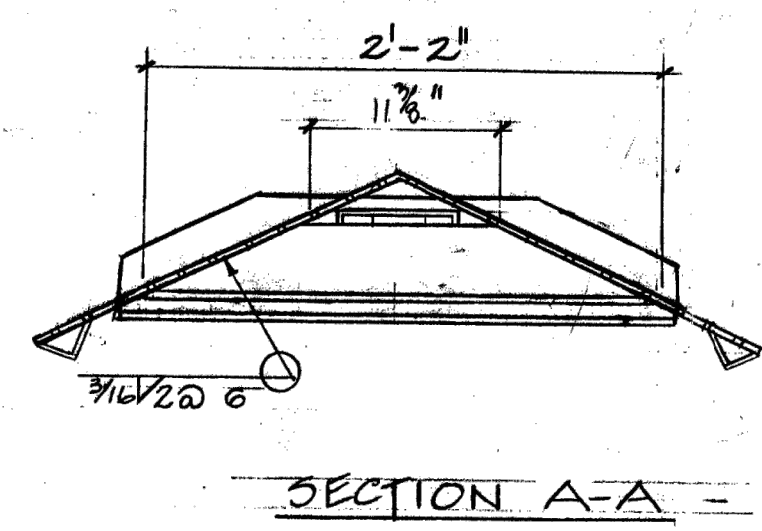
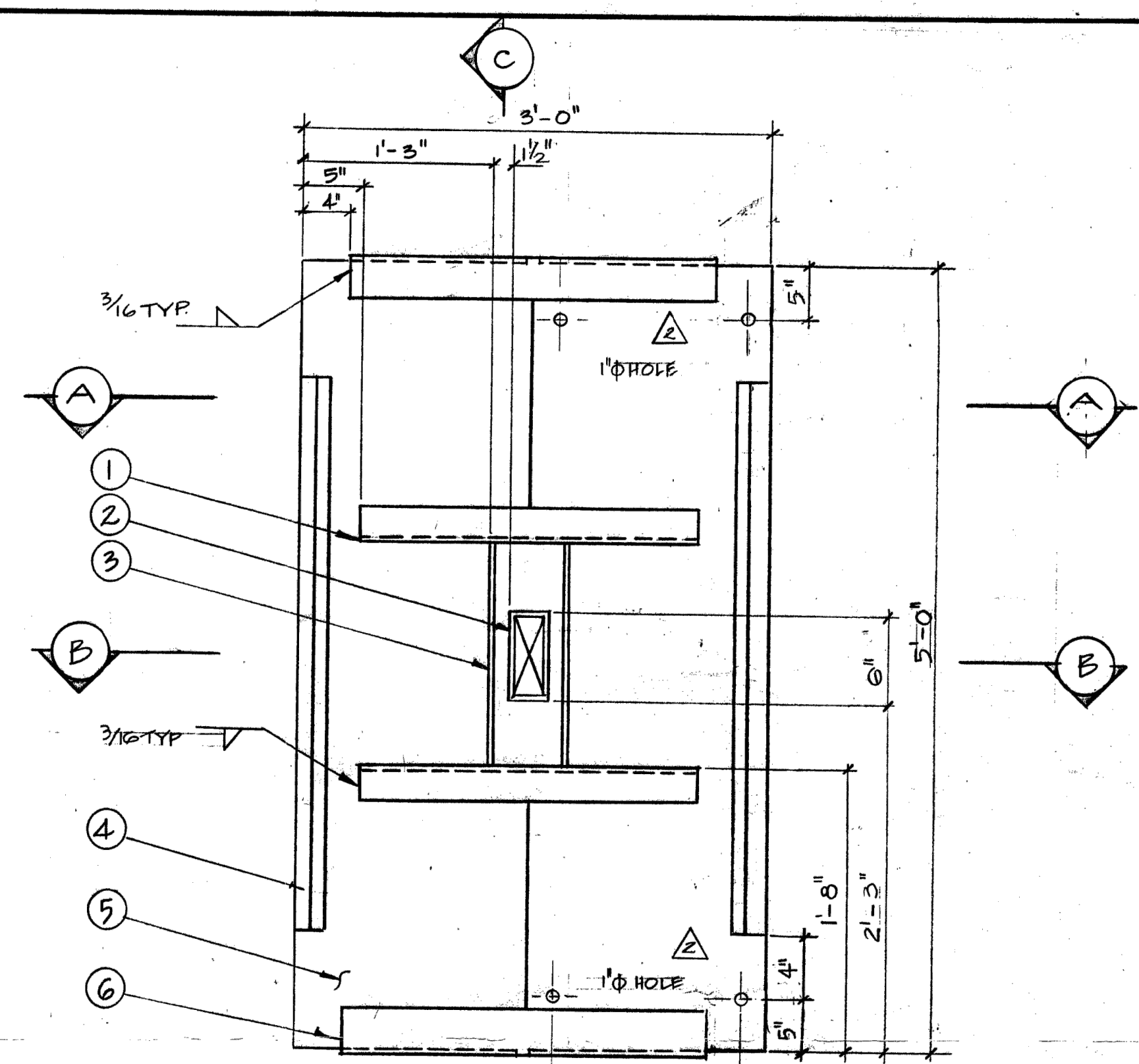
Project no./No. du projet	Drawing no./No. du dessin	Revision no.
2022-01	DWG-04	0

2812-R3

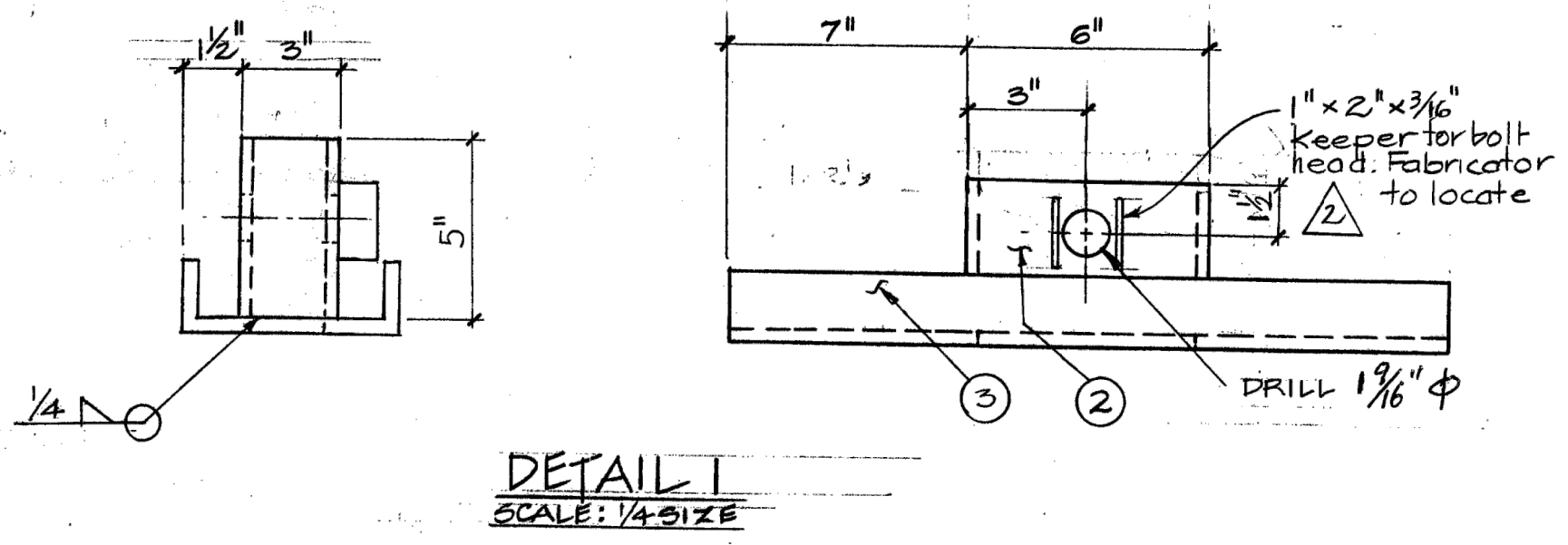
FOR BIDDING PURPOSES

NOTES:
ANCHORS SHOWN ARE SAME AS IN-SITU ANCHORS AND ANCHORS TO BE INSTALLED

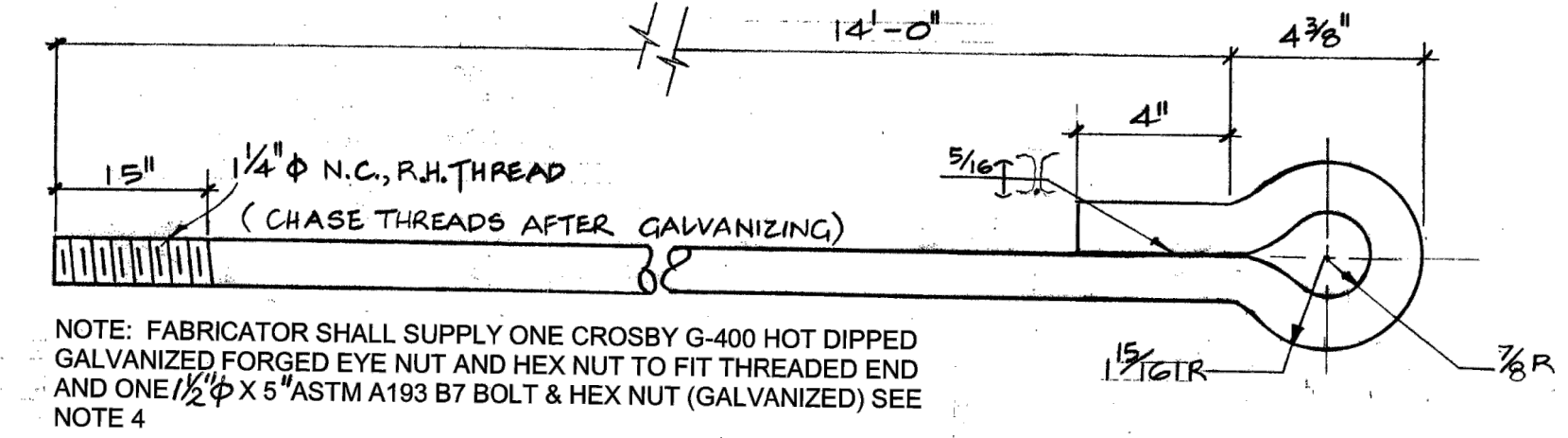
35-2812-R3
35-2812-R2



SECTION B-B

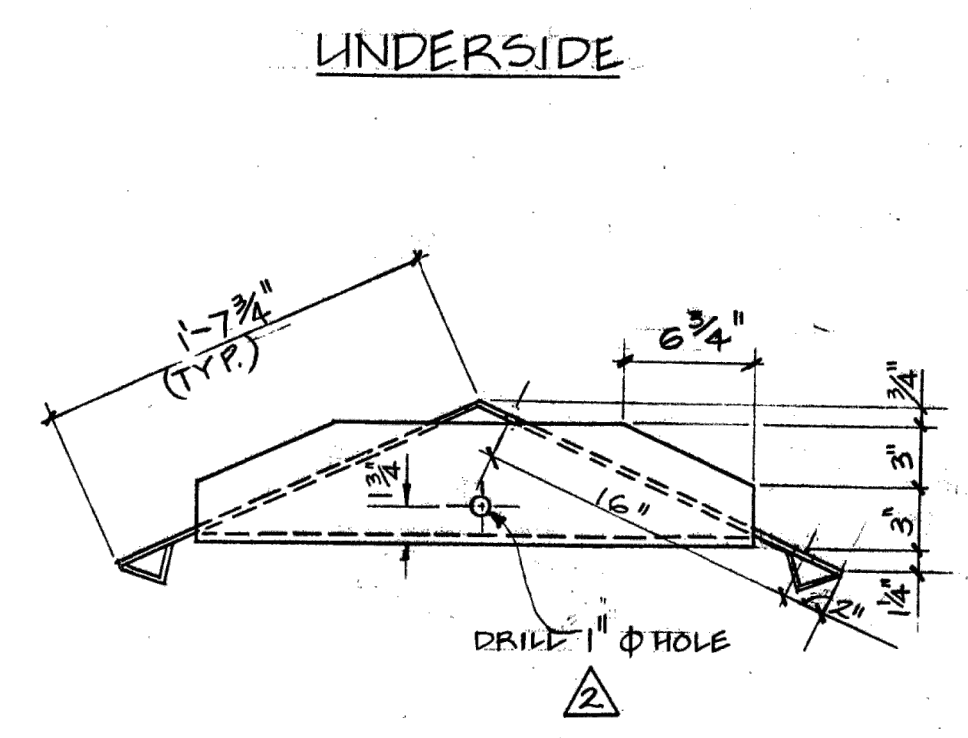


DETAIL 1
SCALE: 1/4" = 1'-0"

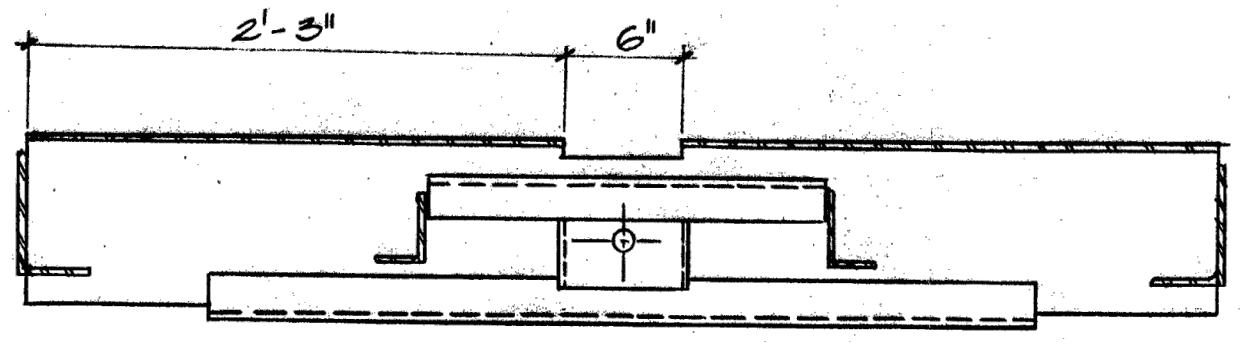


DETAIL 2
SCALE: 1/4" = 1'-0"

NOTE: FABRICATOR SHALL SUPPLY ONE CROSBY G-400 HOT DIPPED GALVANIZED FORGED EYE NUT AND HEX NUT TO FIT THREADED END AND ONE 1/2" x 5" ASTM A193 B7 BOLT & HEX NUT (GALVANIZED) SEE NOTE 4



END



SECTION C-C

* NOTE
ALL SECTION CUTS TAKEN THROUGH TOP SIDE OF ANCHOR

BILL OF MATERIALS		
ITEM	QUANTITY	DESCRIPTION
1	2	3/16" x 2 1/2" x 1/4" ANGLE 2'-2" LONG
2	1	6" x 5" x 3/16" RECTANGULAR TUBE SECTION SEE DETAIL 1
3	1	STANDARD C6X13 CHANNEL, 1'-5" LONG
4	2	2" x 2" x 1/4" ANGLE, 5'-0" LONG
5	2	3/16" phi, 1'-7 3/4" x 5'-0"
6	2	6" x 5/16" x 1/4" ANGLE, 2'-4" LONG
7	1	1/4" phi ROD SEE DETAIL 2
8	1	1/2" phi x 5" BOLT (SEE NOTE 4) # NLPT

- GENERAL NOTES
- ALL PARTS TO BE GALVANIZED AFTER FABRICATION.
 - ANCHOR PLATE TO BE G40.12-44W STEEL, ANCHOR ROD TO BE CSA G40.21-44W OR EQUIVALENT.
 - ALL WELDS TO USE E70 XX ELECTRODES
 - USE ASTM A193 B7 BOLT CONNECTOR (1 1/2" x 5") FOR ROD TO PLATE.

DESIGNED BY ECCC		CONCEPT BY ECCC		DRAWN BY ECCC		APPROVED BY ECCC		ECCC PROJECT MANAGER ECCC		ADMINISTRATEUR DE PROJETS ECCC		Dwg. No. 2812-R3	
DEPT. OF THE ENVIRONMENT WATER SURVEY OF CANADA, VANCOUVER, B.C.		Scale 1/2" = 1'-0" EXCEPT AS NOTED.		Sheet 1 of 1		Station No.		Dwg. No. 2812-R3		35-2812-R2		Station No.	
STEEL ANCHOR PLATE		CABLEWAYS		FABRICATION DETAILS									

Dwg. No.	Title	Dwg. No.	Title
	REFERENCE		REFERENCE

No.	Remarks	By	Date	Chkd.	App.	Drawing	Tracing
1	GENERAL NOTES NO. 2 CHANGED TO G40.21-44W 22 JAN '80						
2	3/16" HOLE WAS 3/16" DIA. DIMENSION WAS 2 1/4" TWO 1" DIA. HOLES ADDED	V.L.	JUNE '79			Survey	
3	RI ANGLES & PLATES REVISED	E.B.	AP '78			Design	
4							
5							
6							
7							
8							
9							
10							
11							
12							
13							
14							
15							
16							
17							
18							
19							
20							
21							
22							
23							
24							
25							
26							
27							
28							
29							
30							
31							
32							
33							
34							
35							
36							
37							
38							
39							
40							
41							
42							
43							
44							
45							
46							
47							
48							
49							
50							
51							
52							
53							
54							
55							
56							
57							
58							
59							
60							
61							
62							
63							
64							
65							
66							
67							
68							
69							
70							
71							
72							
73							
74							
75							
76							
77							
78							
79							
80							
81							
82							
83							
84							
85							
86							
87							
88							
89							
90							
91							
92							
93							
94							
95							
96							
97							
98							
99							
100							

Destroy all prints bearing previous number

STEEL PLATE ANCHOR DETAILS

FOR BIDDING PURPOSES

BILLS OF MATERIAL

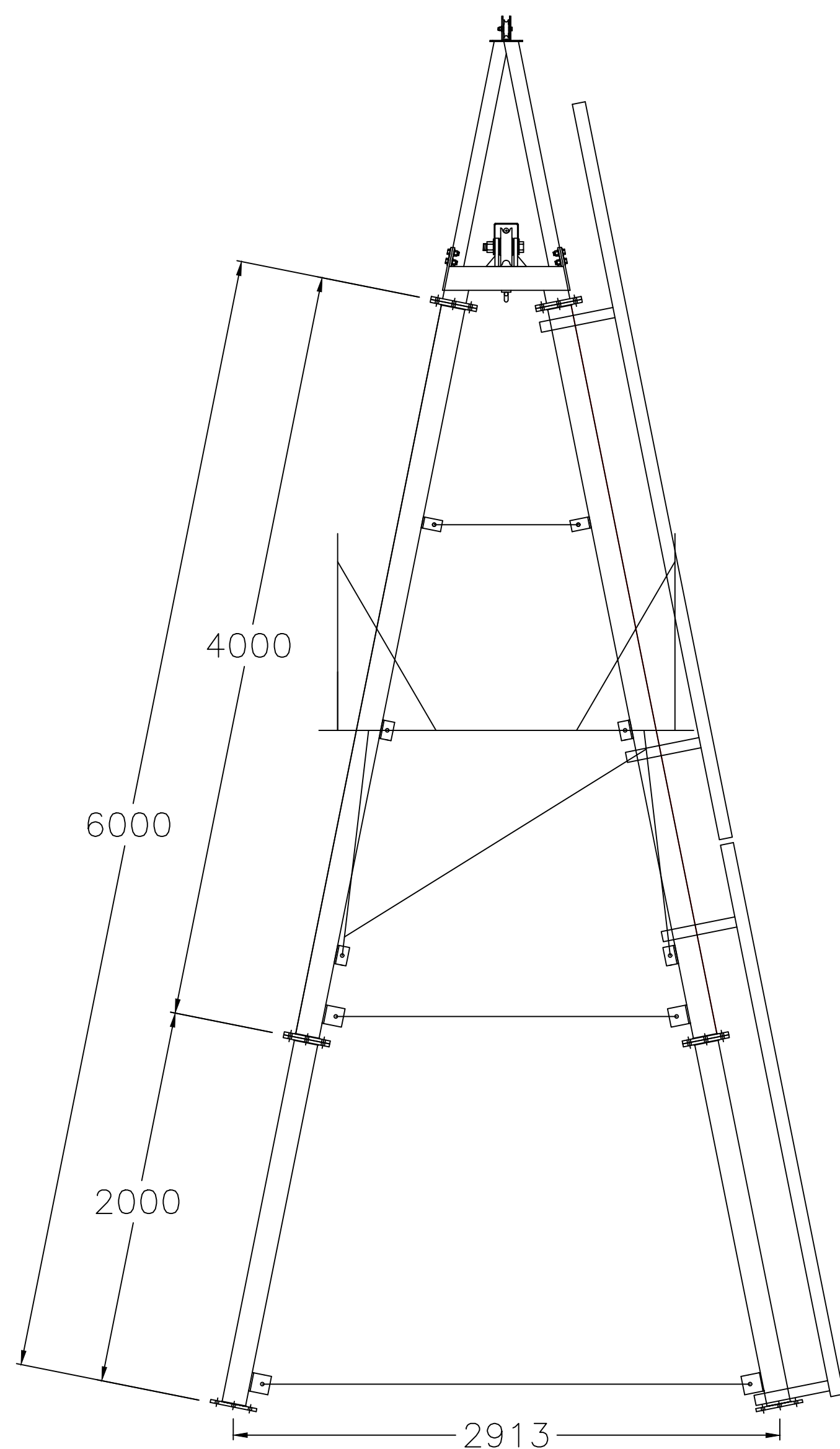
A COMPLETE 6 METRE A-FRAME ASSEMBLY
CONSISTS OF THE FOLLOWING:

QTY	DESCRIPTION	DWG No.	SUPPLIER
1	A-FRAME TOP ASSEMBLY	3136-4	CONTRACTOR
1	4 METRE LEG ASSEMBLY	3136-5	CONTRACTOR
1	2 METRE LEG ASSEMBLY	3136-5	CONTRACTOR
1	1.9 METRE HORIZONTAL BRACE ASSEMBLY	3136-6	CONTRACTOR
1	2.7 METRE HORIZONTAL BRACE ASSEMBLY	3136-6	CONTRACTOR
1	PLATFORM ASSEMBLY	3136-9	CONTRACTOR
1	CAR HOOK ASSEMBLY LEG	3136-10	CONTRACTOR
4	LADDER BRACKET ASSEMBLY	3136-10	CONTRACTOR
1	4m LADDER	3136-10	OTHER
1	3m LADDER		* W.S.C.

EST. W.T. 718.1 kg

NOTES:

- ALL PARTS TO BE HOT-DIPPED GALVANIZED C.S.A. G-164
- ALL BOLTS & NUTS TO BE M16 A325M TYPE 2 GALVANIZED
- ALL STEEL SHALL CONFORM TO C.S.A. G40.21M GRADE 350W GALVANIZED
- ALL DIMENSIONS IN MILLIMETERS UNLESS OTHERWISE NOTED



6 METRE A-FRAME

EXACT HEIGHT TO CENTRE OF 25Ø WIRE ROPE IN MAIN CABLE SHEAVE = 6.274 METRES (WITHOUT FOOT PIECE)

0	ISSUED FOR TENDER	2022-08
---	-------------------	---------

Revision	Description	Date
----------	-------------	------

Project

CABLEWAY UPGRADES &
REPAIRS
TELKWA RIVER 08EE020

Location

TELKWA RIVER BELOW
TSAI CREEK
BRITISH COLUMBIA

Designed by
ECCC

Drawn by
ECCC

Approved by
ECCC

ECCC Project Manager
ECCC

Drawing title

NEW HOME-SIDE AND
FAR-SIDE HD A-FRAME

Project no./No. du projet	Drawing no./No. du dessin	Revision no.
---------------------------	---------------------------	--------------

2022-01 DWG-07 0