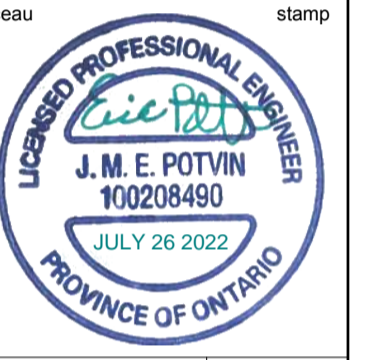


Not for construction

Contractor to verify all dimensions & conditions on site and immediately notify the engineer of all discrepancies.



THE UNDERGROUND FEATURES AND INFORMATION THAT APPEAR ON THE DRAWINGS WERE OBTAINED FROM THE PUBLIC UTILITY COMPANIES AND/OR FROM THE CITY EACH RESPECTIVELY.

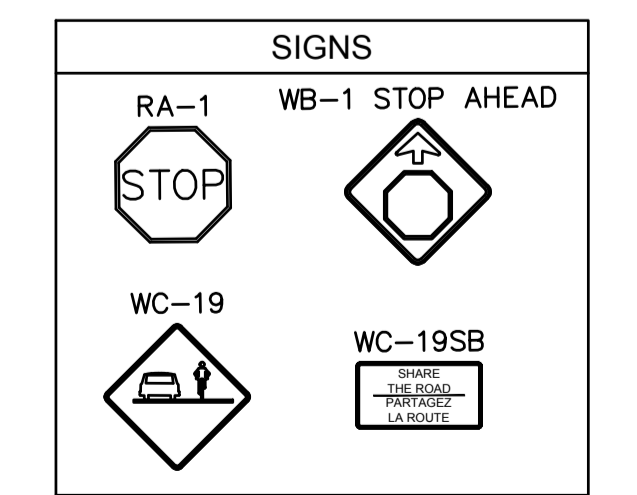
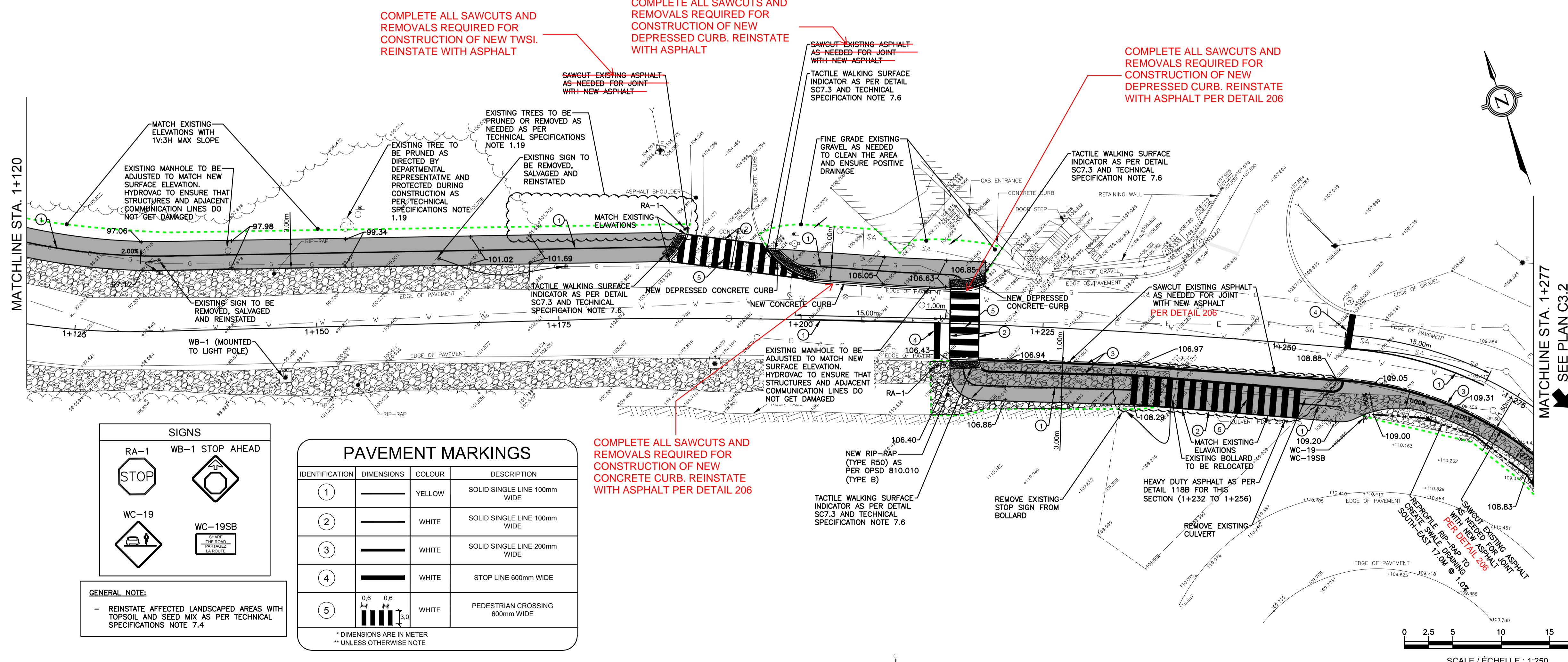
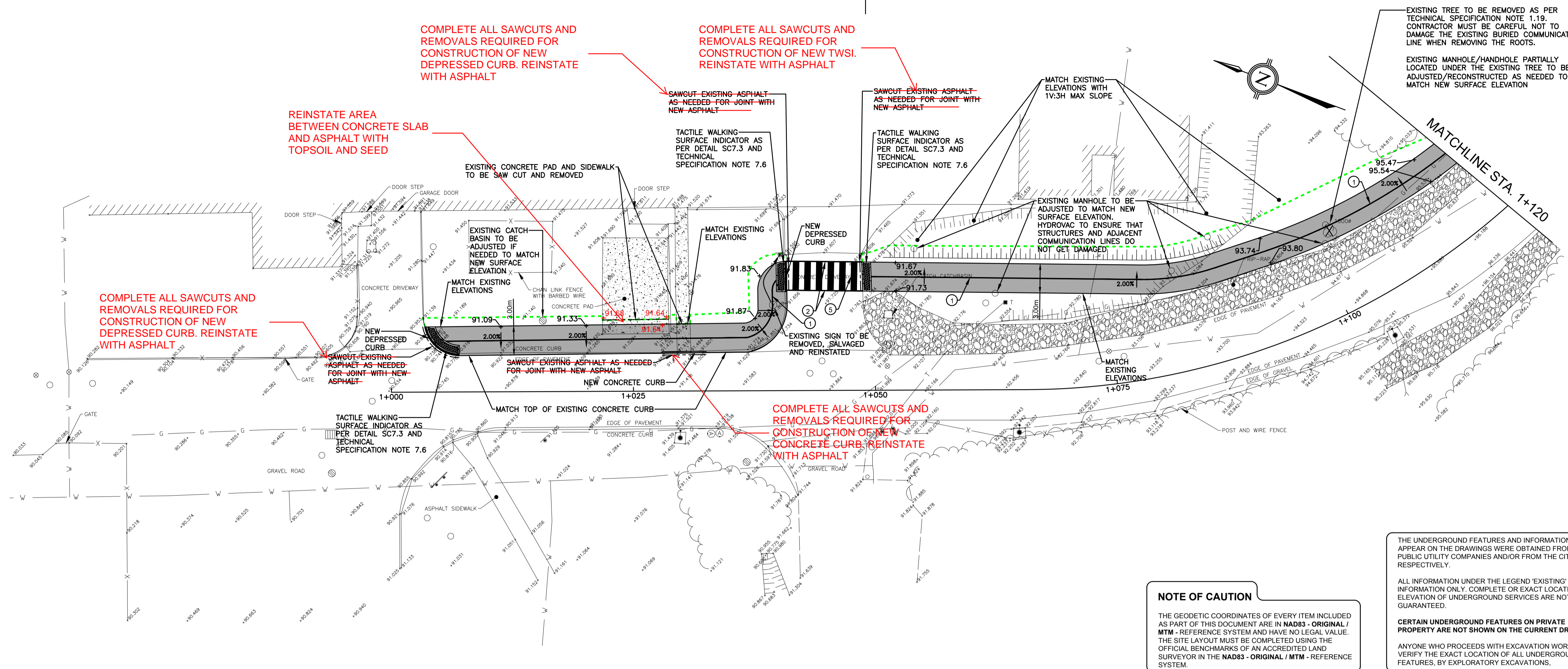
ALL INFORMATION UNDER THE LEGEND "EXISTING" IS FOR INFORMATION ONLY. COMPLETE OR EXACT LOCATION AND ELEVATION OF UNDERGROUND SERVICES ARE NOT GUARANTEED.

CERTAIN UNDERGROUND FEATURES ON PRIVATE PROPERTY ARE NOT SHOWN ON THE CURRENT DRAWING.

ANYONE WHO PROCEEDS WITH EXCAVATION WORK SHALL VERIFY THE EXACT LOCATION OF ALL UNDERGROUND FEATURES, BY EXPLORATORY EXCAVATIONS.

**NOTE OF CAUTION**

THE GEODETIC COORDINATES OF EVERY ITEM INCLUDED AS PART OF THIS DOCUMENT ARE IN NAD83 - ORIGINAL / NTM - REFERENCE SYSTEM AND HAVE NO LEGAL VALUE. THE SITE LAYOUT MUST BE COMPLETED USING THE OFFICIAL BENCHMARKS OF AN ACCREDITED LAND SURVEYOR IN THE NAD83 - ORIGINAL / NTM - REFERENCE SYSTEM.



**GENERAL NOTE:**

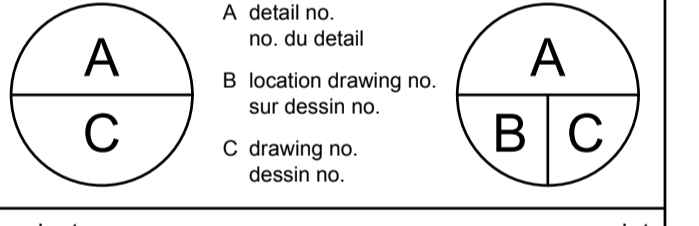
- REINSTATE AFFECTED LANDSCAPED AREAS WITH TOPSOIL AND SEED MIX AS PER TECHNICAL SPECIFICATIONS NOTE 7.4

**PAVEMENT MARKINGS**

IDENTIFICATION	DIMENSIONS	COLOUR	DESCRIPTION
1	—	YELLOW	SOLID SINGLE LINE 100mm WIDE
2	—	WHITE	SOLID SINGLE LINE 100mm WIDE
3	—	WHITE	SOLID SINGLE LINE 200mm WIDE
4	—	WHITE	STOP LINE 600mm WIDE
5	0.6 x 0.6 x 3.0	WHITE	PEDESTRIAN CROSSING 600mm WIDE

\* DIMENSIONS ARE IN METER  
\*\* UNLESS OTHERWISE NOTE

revisions	description	date
2	ISSUED FOR ADDENDUM 1	22/08/25
1	ISSUED FOR TENDER	22/07/26



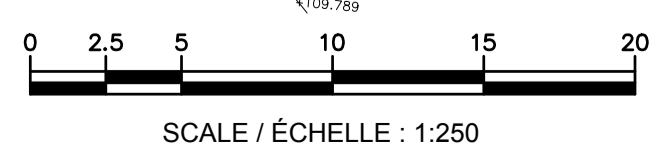
project description: WALKWAY TO UPPER TERRACE

drawing description: GEOMETRY AND GRADING PLAN

Designed By	E. POTVIN	Conçu par	
Date	2021/06/11	(yyyy/mm/dd)	
Drawn By	J.-P. PHARAND	Dessiné par	
Date	2021/06/11	(yyyy/mm/dd)	
Reviewed By	G. DOUCETTE	Examiné par	
Date	2021/06/11	(yyyy/mm/dd)	
Approved By	H. BISSON	Approuvé par	
Date	2021/06/11	(yyyy/mm/dd)	
Tender	JOHN FLECK	Soumission	
Project Manager		Administrateur de projets	
Project no.		No. du projet	

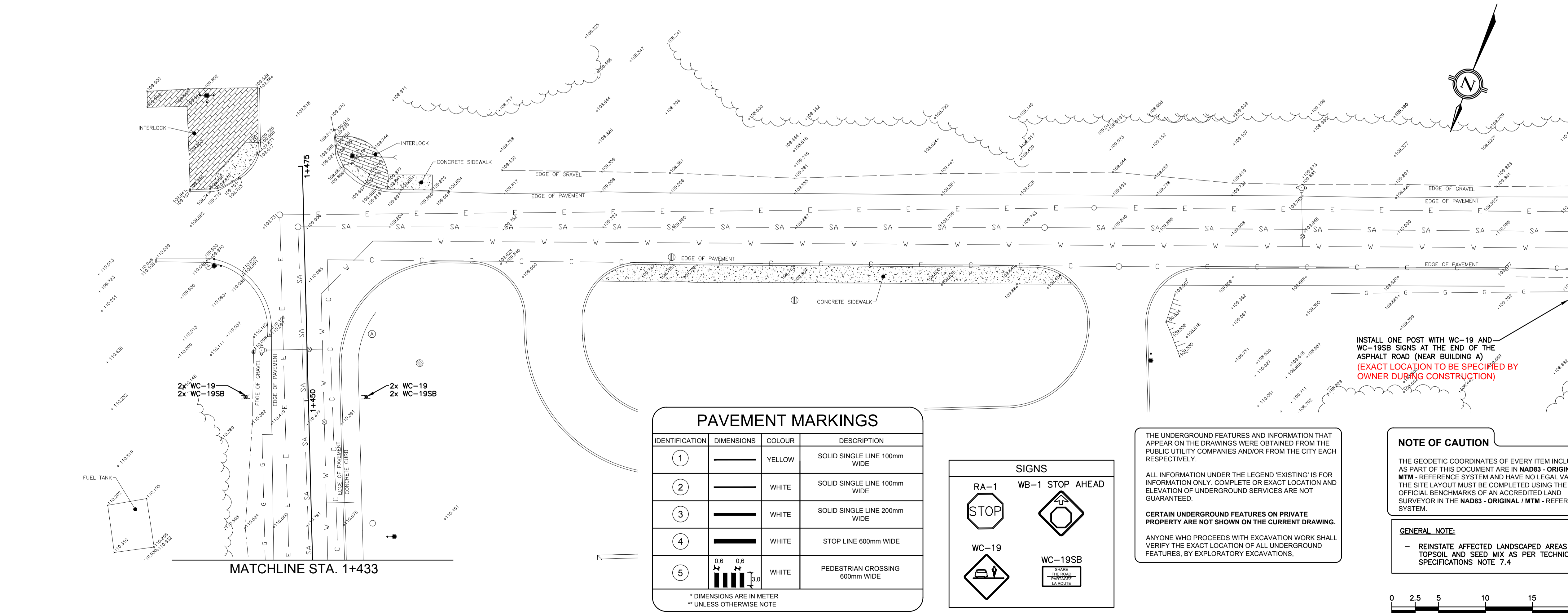
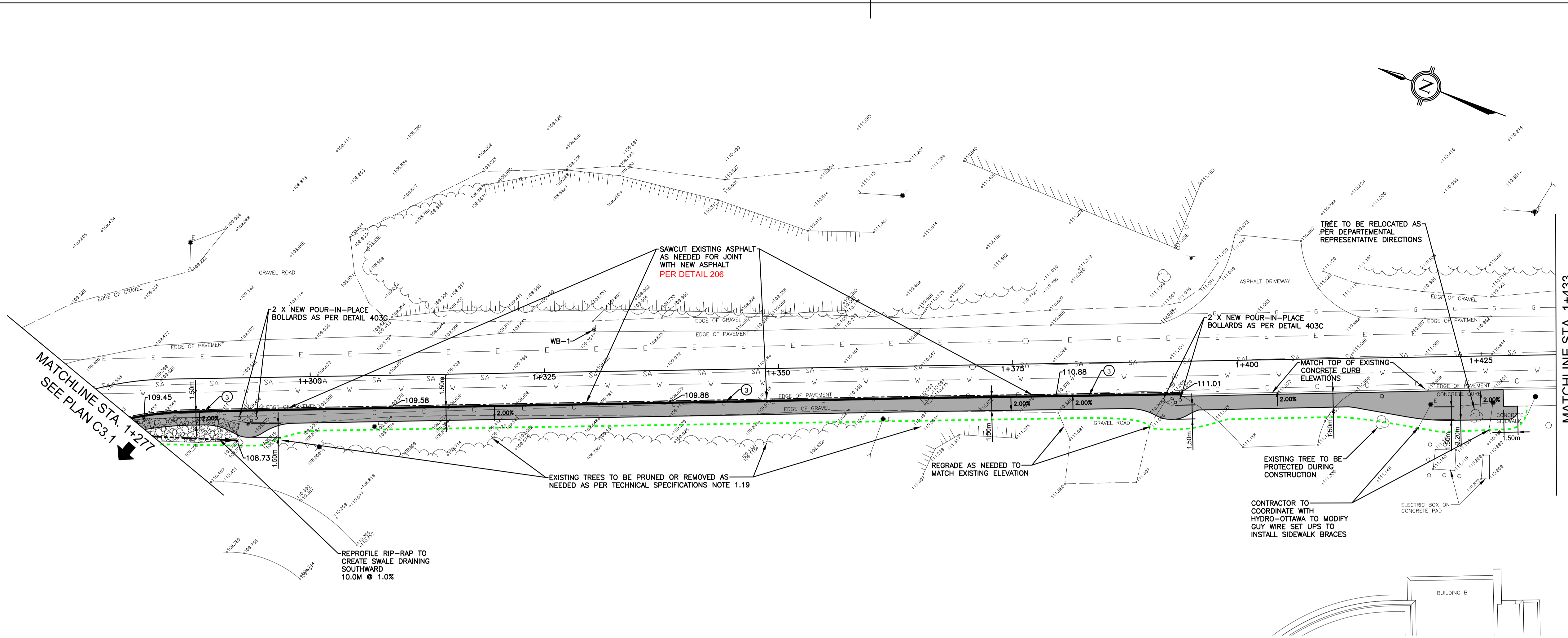
A001125

Drawing no. **C3.1** No. du dessin



Not for construction

Contractor to verify all dimensions & conditions on site and immediately notify the engineer of all discrepancies.



2	ISSUED FOR ADDENDUM 1	22/08/25
1	ISSUED FOR TENDER	22/07/26

revisions	description	date
A	A detail no. no. du detail	A
B	B location drawing no. sur dessin no.	B
C	C drawing no. dessin no.	C

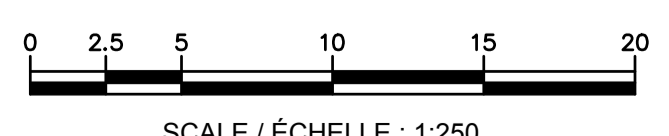
project project

WALKWAY TO UPPER TERRACE

drawing dessin

GEOMETRY AND GRADING PLAN

Designed By	E. POTVIN	Conçu par
Date	2021/06/11	(yyyy/mm/dd)
Drawn By	J.-P. PHARAND	Dessiné par
Date	2021/06/11	(yyyy/mm/dd)
Reviewed By	G. DOUCETTE	Examiné par
Date	2021/06/11	(yyyy/mm/dd)
Approved By	H. BISSON	Approuvé par
Date	2021/06/11	(yyyy/mm/dd)
Tender	JOHN FLECK	Soumission
Project Manager	Administrateur de projets	
Project no.	A001125	No. du projet
Drawing no.	C3.2	No. du dessin



Not for construction

Contractor to verify all dimensions & conditions on site and immediately notify the engineer of all discrepancies.



2 ISSUED FOR ADDENDUM 1 22/08/25

1 ISSUED FOR TENDER 22/07/26

revisions	description	date
2	ISSUED FOR ADDENDUM 1	22/08/25
1	ISSUED FOR TENDER	22/07/26

A	A detail no. no. du detail	A
B	B location drawing no. sur dessin no.	B
C	C drawing no. dessin no.	C

project project

WALKWAY TO UPPER TERRACE

drawing dessin

DETAILS PLAN

Designed By	E. POTVIN	Conçu par
Date	2021/06/11	(yyyy/mm/dd)
Drawn By	J.-P. PHARAND	Dessiné par
Date	2021/06/11	(yyyy/mm/dd)
Reviewed By	G. DOUCETTE	Examiné par
Date	2021/06/11	(yyyy/mm/dd)
Approved By	H. BISSON	Approuvé par
Date	2021/06/11	(yyyy/mm/dd)
Tender	JOHN FLECK	Soumission

Project Manager Administrateur de projets

Project No. No. du projet

A001125

Drawing No. No. du dessin

C4.2

**TREE PROTECTION REQUIREMENTS:**

- PRIOR TO ANY WORK ACTIVITY WITHIN THE CRITICAL ROOT ZONE (CRZ - 10 X DIAMETER) OF A TREE, TREE PROTECTION FENCING MUST BE INSTALLED SURROUNDING THE CRITICAL ROOT ZONE, AND REMAIN IN PLACE UNTIL THE WORK IS COMPLETE.
- UNLESS PLANS ARE APPROVED BY CITY FORESTRY STAFF, FOR WORK WITHIN THE CRZ:
  - DO NOT PLACE ANY MATERIAL OR EQUIPMENT - INCLUDING OUTHOUSES;
  - DO NOT ATTACH ANY SIGNS, NOTICES OR POSTERS TO ANY TREE;
  - DO NOT RAISE OR LOWER THE EXISTING GRADE;
  - TUNNEL OR SORE WHEN DIGGING;
  - DO NOT DAMAGE THE ROOT SYSTEM, TRUNK, OR BRANCHES OR ANY TREE;
  - ENSURE THAT EXHAUST FUMES FROM ALL EQUIPMENT ARE NOT DIRECTED TOWARD ANY TREE CANOPY;
  - DO NOT EXTEND HARD SURFACE OR SIGNIFICANTLY CHANGE LANDSCAPING
- TREE PROTECTION FENCING MUST BE AT LEAST 1.2M IN HEIGHT, AND CONSTRUCTED OF RIGID OR FRAMED MATERIALS (E.G. MODULOC - STEEL, PLYWOOD HOARDING, OR SNOW FENCE ON A 2"x4" WOOD FRAME) WITH POSTS 2.4M APART, SUCH THAT THE FENCE LOCATION CANNOT BE ALTERED. ALL SUPPORTS AND BRACING MUST BE PLACED OUTSIDE OF THE CRZ, AND INSTALLATION MUST MINIMIZE DAMAGE TO EXISTING ROOTS. (SEE DETAIL)
- THE LOCATION OF THE TREE PROTECTION FENCING MUST BE DETERMINED BY AN ARBORIST AND DETAILED ON ANY ASSOCIATED PLANS FOR THE SITE (E.G. TREE CONSERVATION REPORT, TREE INFORMATION REPORT, ETC). THE PLAN AND CONSTRUCTED FENCING MUST BE APPROVED BY CITY FORESTRY STAFF PRIOR TO THE COMMENCEMENT OF WORK.
- IF THE FENCED TREE PROTECTION AREA MUST BE REDUCED TO FACILITATE CONSTRUCTION, MITIGATION MEASURES MUST BE PRESCRIBED BY AN ARBORIST AND APPROVED BY CITY FORESTRY STAFF. THESE MAY INCLUDE THE PLACEMENT OF PLYWOOD, WOOD CHIPS, OR STEEL PLATING OVER THE ROOTS FOR PROTECTION OR THE PROPER PRUNING AND CARE OF ROOTS WHERE ENCOUNTERED.

THE CITY'S TREE PROTECTION BY-LAW, 2020-340 PROTECTS BOTH CITY-OWNED TREES, CITY-WIDE, AND PRIVATELY-OWNED TREES WITHIN THE URBAN AREA. PLEASE REFER TO WWW.OTTAWA.CA/TREEBYLAW FOR MORE INFORMATION ON HOW THE TREE BY-LAW APPLIES.

ACCESSIBLE FORMATS AND COMMUNICATION SUPPORTS ARE AVAILABLE, UPON REQUEST

**Ottawa**

**TREE PROTECTION SPECIFICATION**

TO BE IMPLEMENTED FOR RETAINED TREES, BOTH ON SITE AND ON ADJACENT SITES, PRIOR TO ANY TREE REMOVAL OR SITE WORKS AND MAINTAINED FOR THE DURATION OF WORK ACTIVITIES ON SITE.

SCALE: NTS

DATE: MARCH 2021

DRAWING NO.: 1 of 1

**NOTES:**

- The thickness of the rip-rap layer shall be at least 1.5 times the rip-rap mean diameter.
- All dimensions are in millimetres unless otherwise shown.

ONTARIO PROVINCIAL STANDARD DRAWING

Nov 2018 Rev 3

**GENERAL RIP-RAP LAYOUT FOR SEWER AND CULVERT OUTLETS**

OPSD 810.010

**TYPICAL DETAIL - BOLLARD ANCHORED TO ROCK**

NTS

403C  
C-4.2

**NOTES:**

- TOPS OF TWSI'S (TACTILE WALKING SURFACE INDICATOR) SHALL BE ALIGNED & LEVEL WITH THE ADJACENT CONCRETE SURFACE & INSTALLATION IN WET CONCRETE SHALL BE EFFECTIVE IN PERMANENTLY SECURING THE TWSI IN PLACE ONCE DRY.
- FOR MONOLITHIC SIDEWALKS, TWSI SHALL BE 300 TO 350mm BACK FROM THE CURB FACE.

N.T.S.

**Ottawa**

**TWSI DETAIL**

DATE: MARCH 2015

REV: MARCH 2016

DATE: MARCH 2016

DWG. No.: SC7.3

**TYPICAL SECTION - TRANSITION BETWEEN EXISTING AND PROPOSED PAVEMENT**

AUGURE INTS

206