

Pêches et Océans
Canada

Fisheries and Oceans
Canada

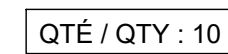
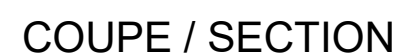
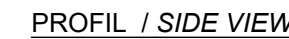
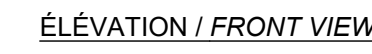
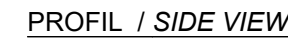
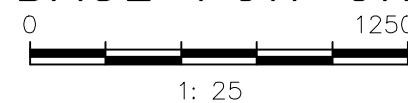
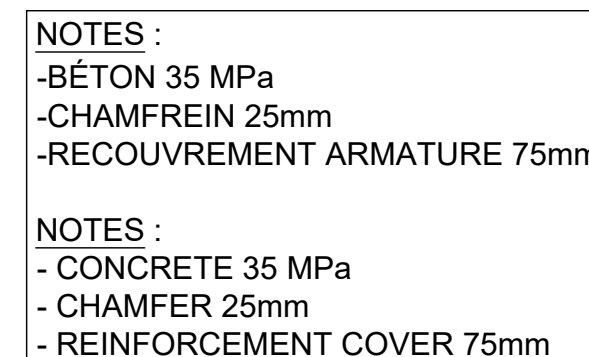
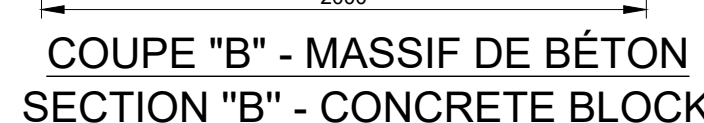
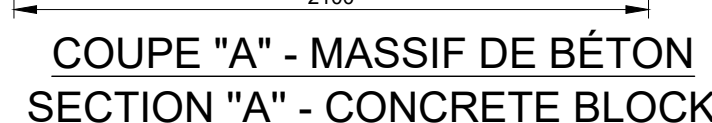
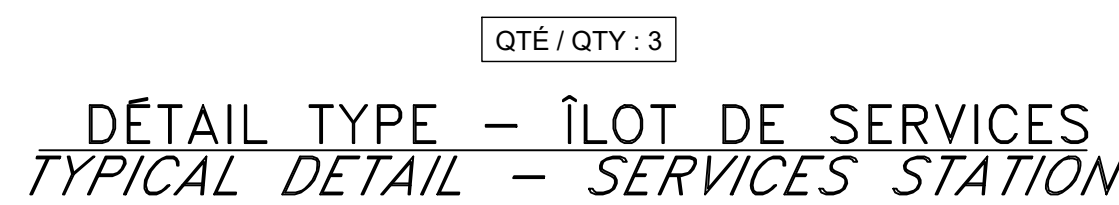
Ports pour petits bateaux
Région du Québec

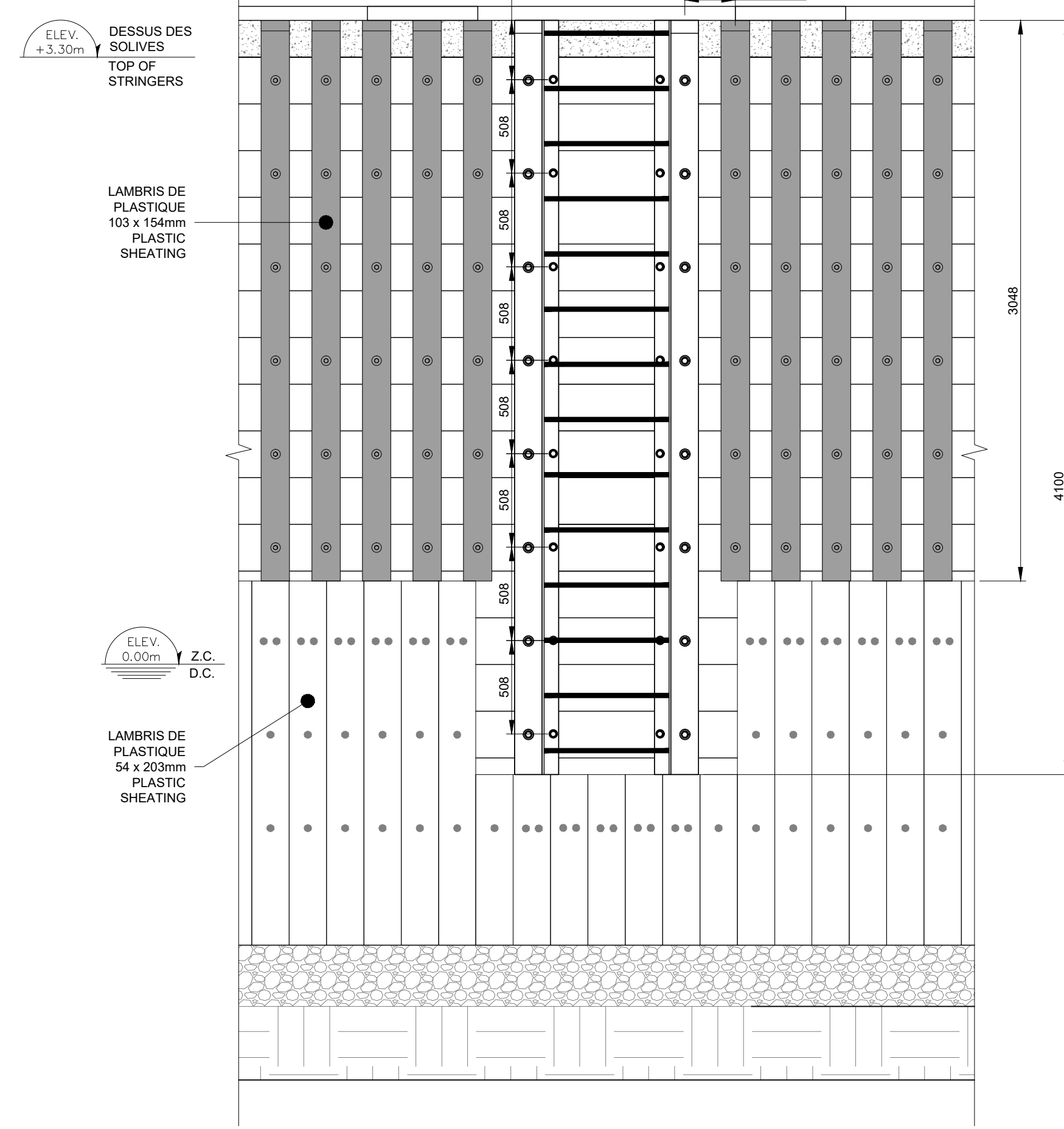
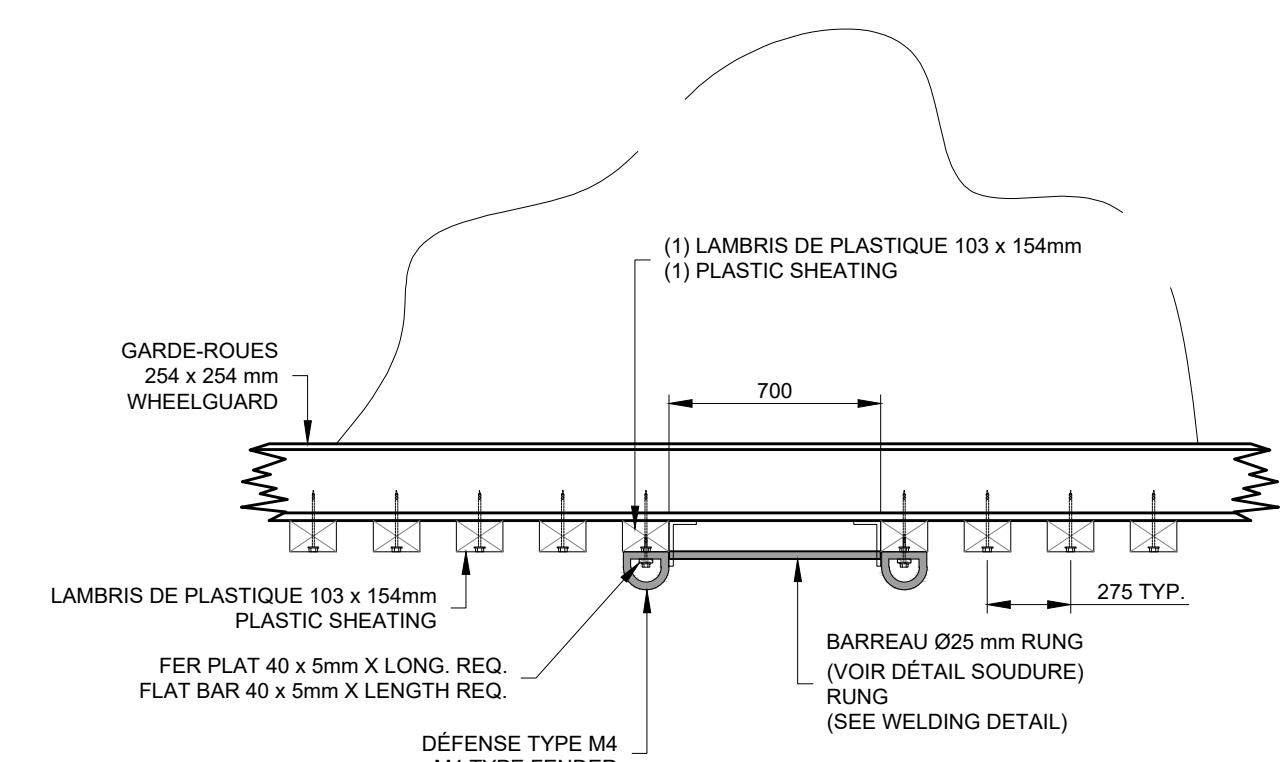
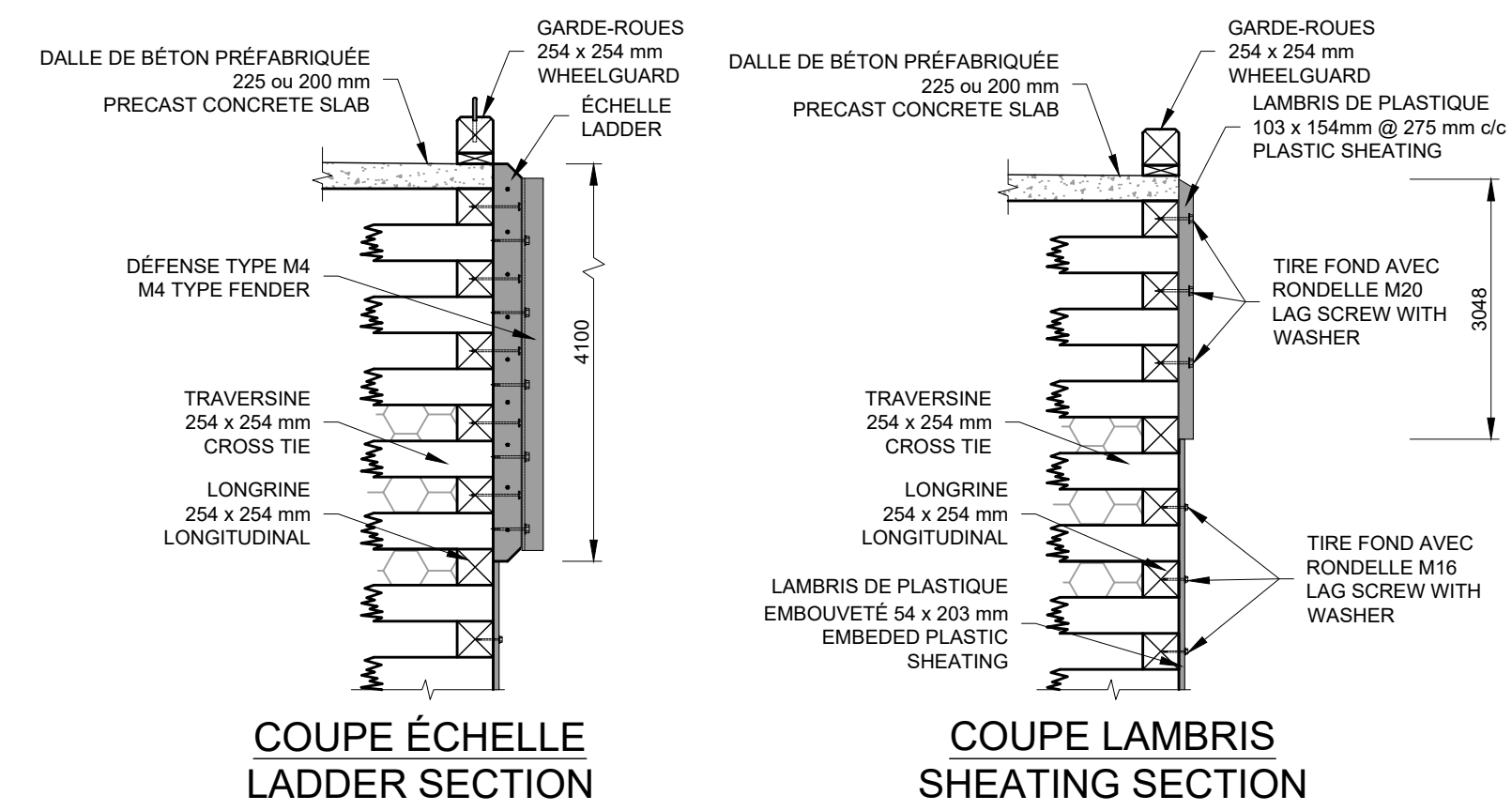
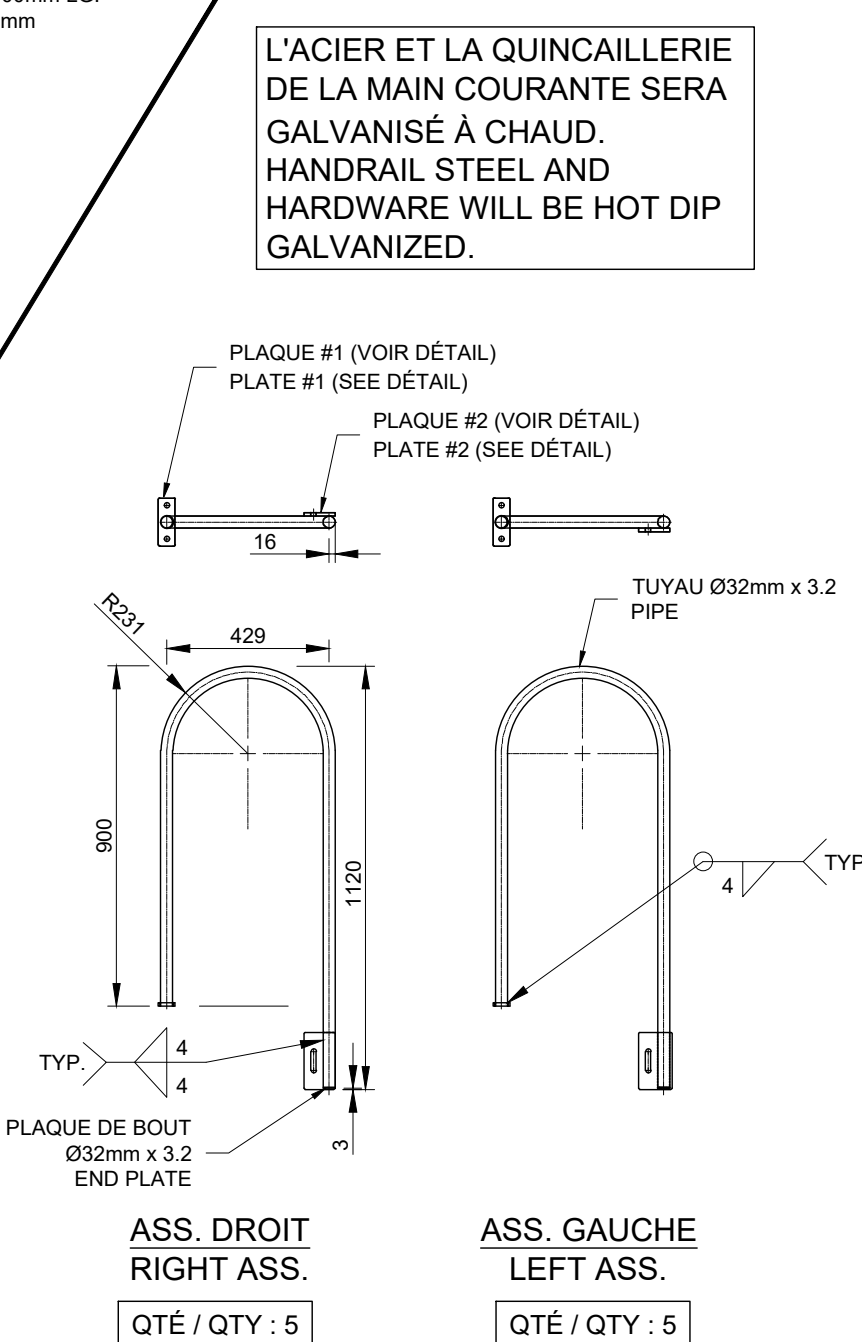
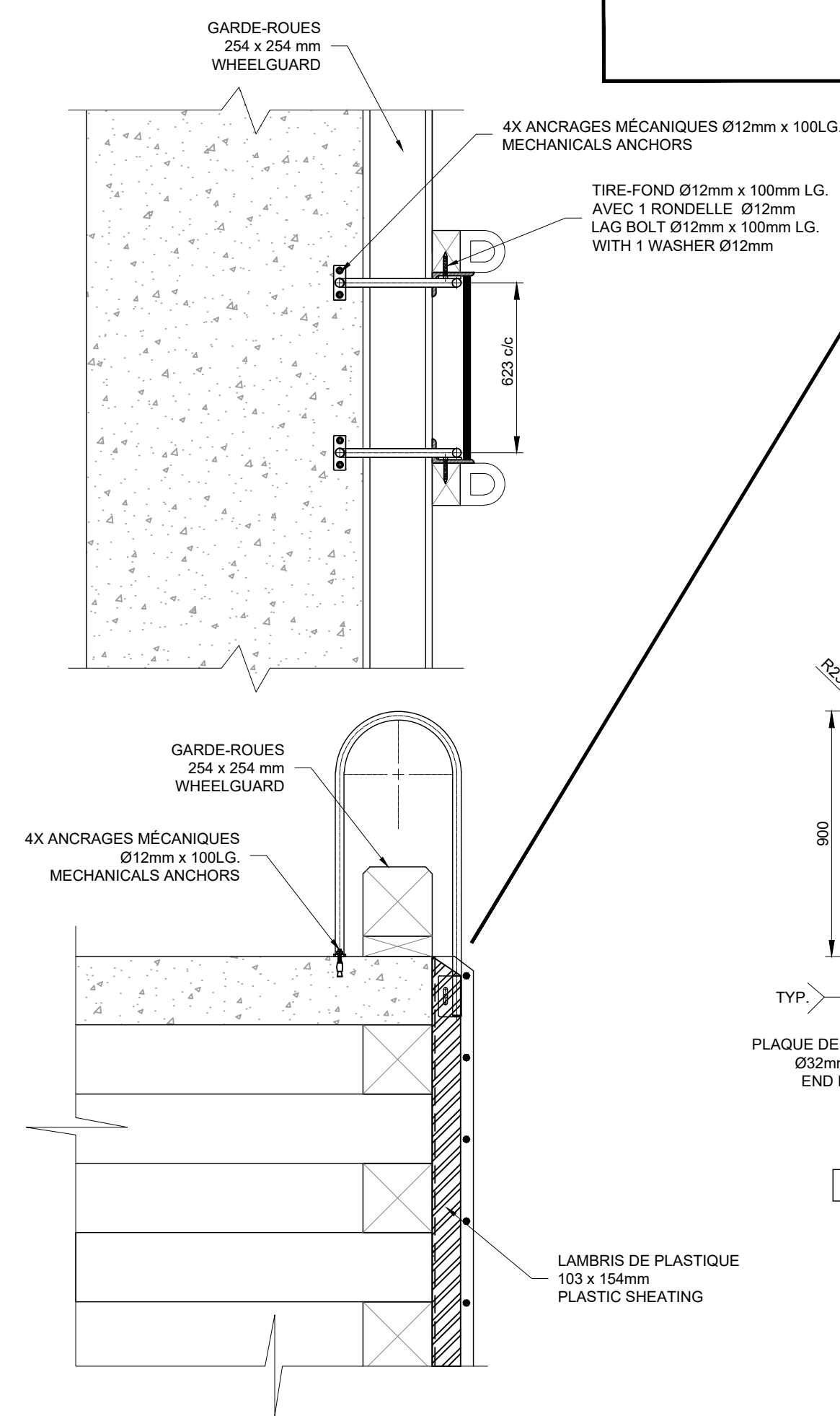
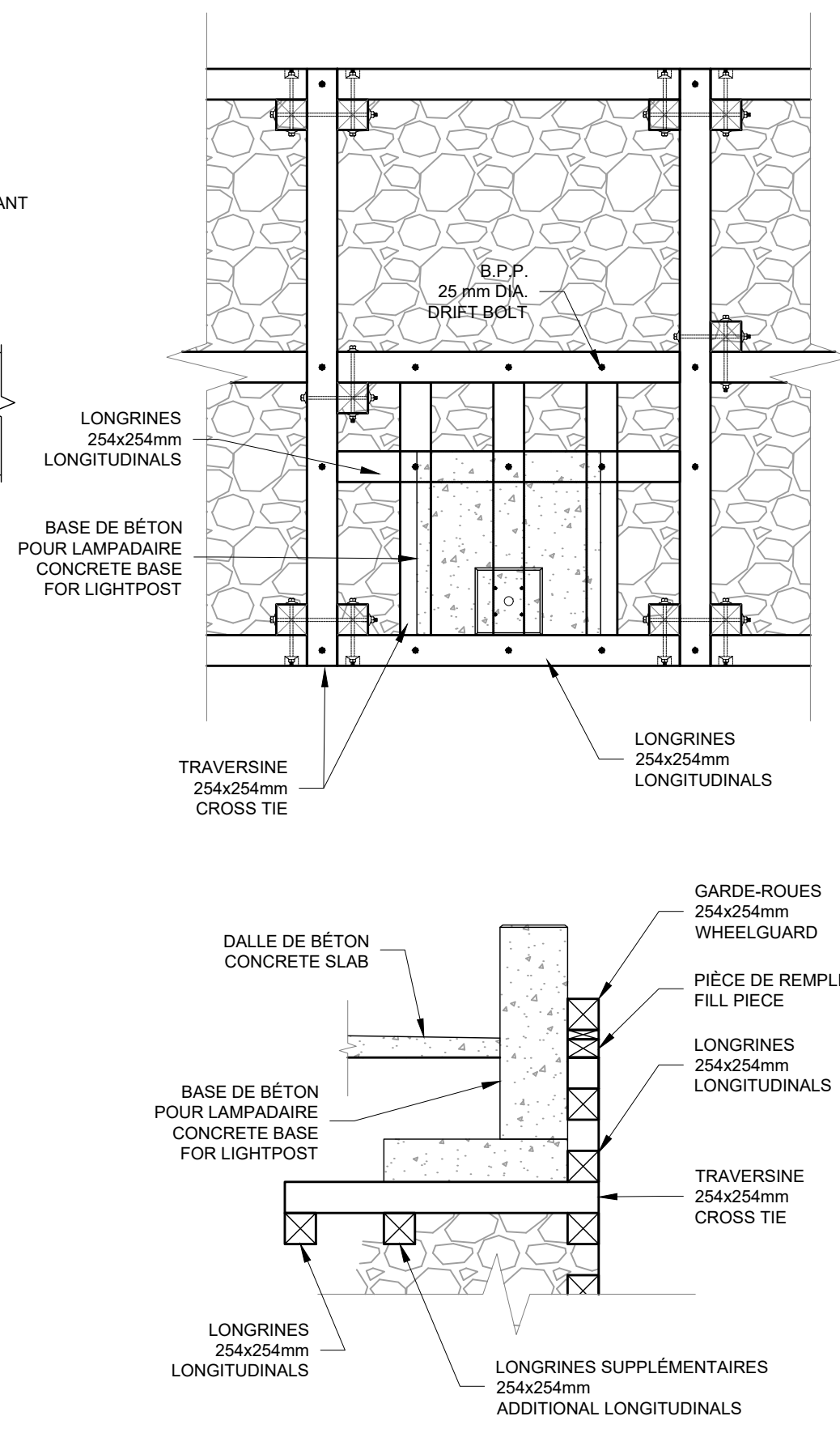
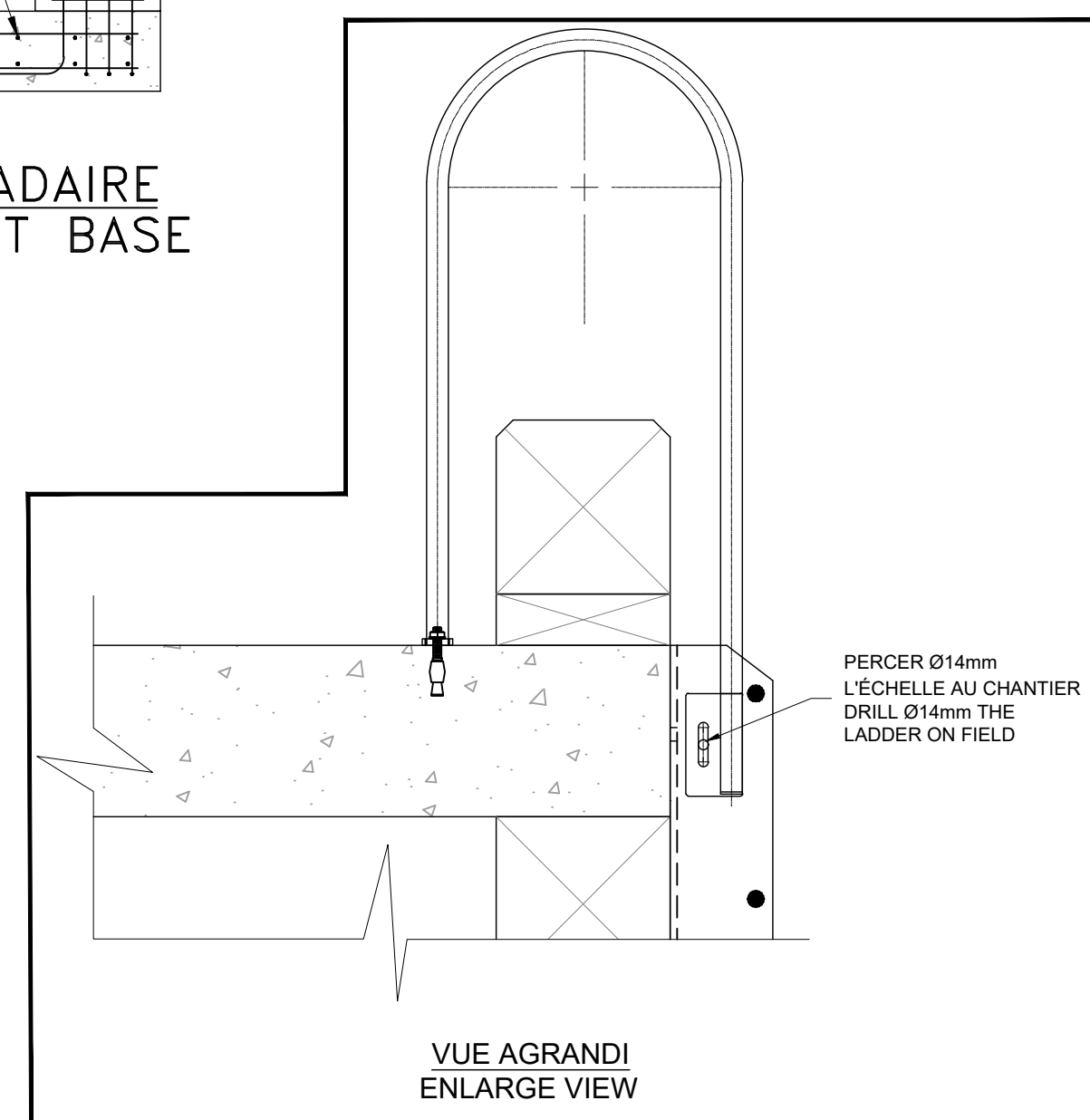
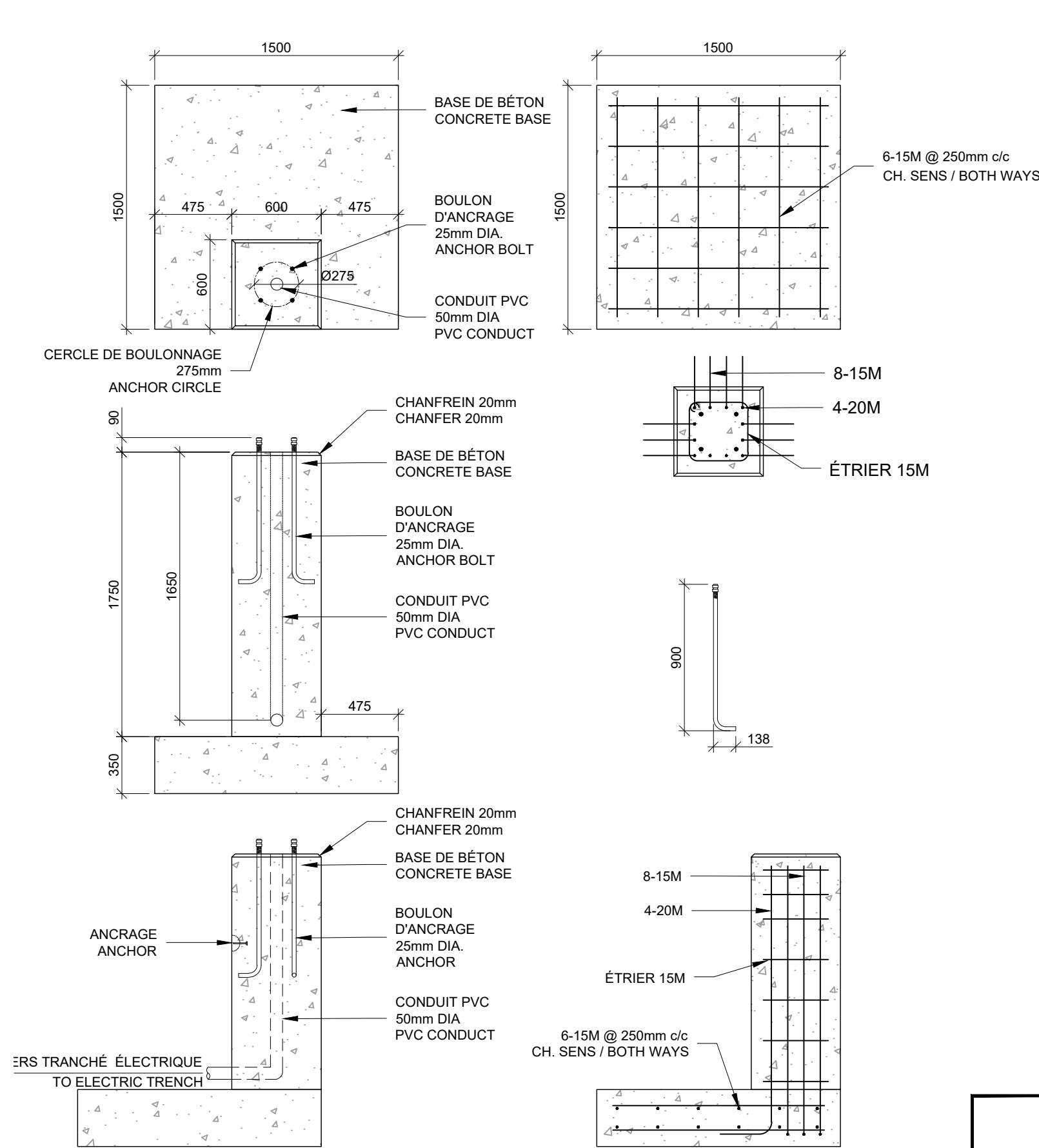
ST-GODEFROI
REVITALISATION DU HAVRE
HARBOR REVITALIZATION

QUAI NOUVEAU
VUES EN ÉLEVATION ET DÉTAILS TYPES
NEW WHARF
ELEVATION VIEWS AND TYPICAL DETAILS

Dessiné par: Y GINGRAS ing. 2021.05.12
 Dessiné par: L. MALLET 2021.05.12
 Vérifié par: 2021.05.12
 Approuvé par: 2021.05.12

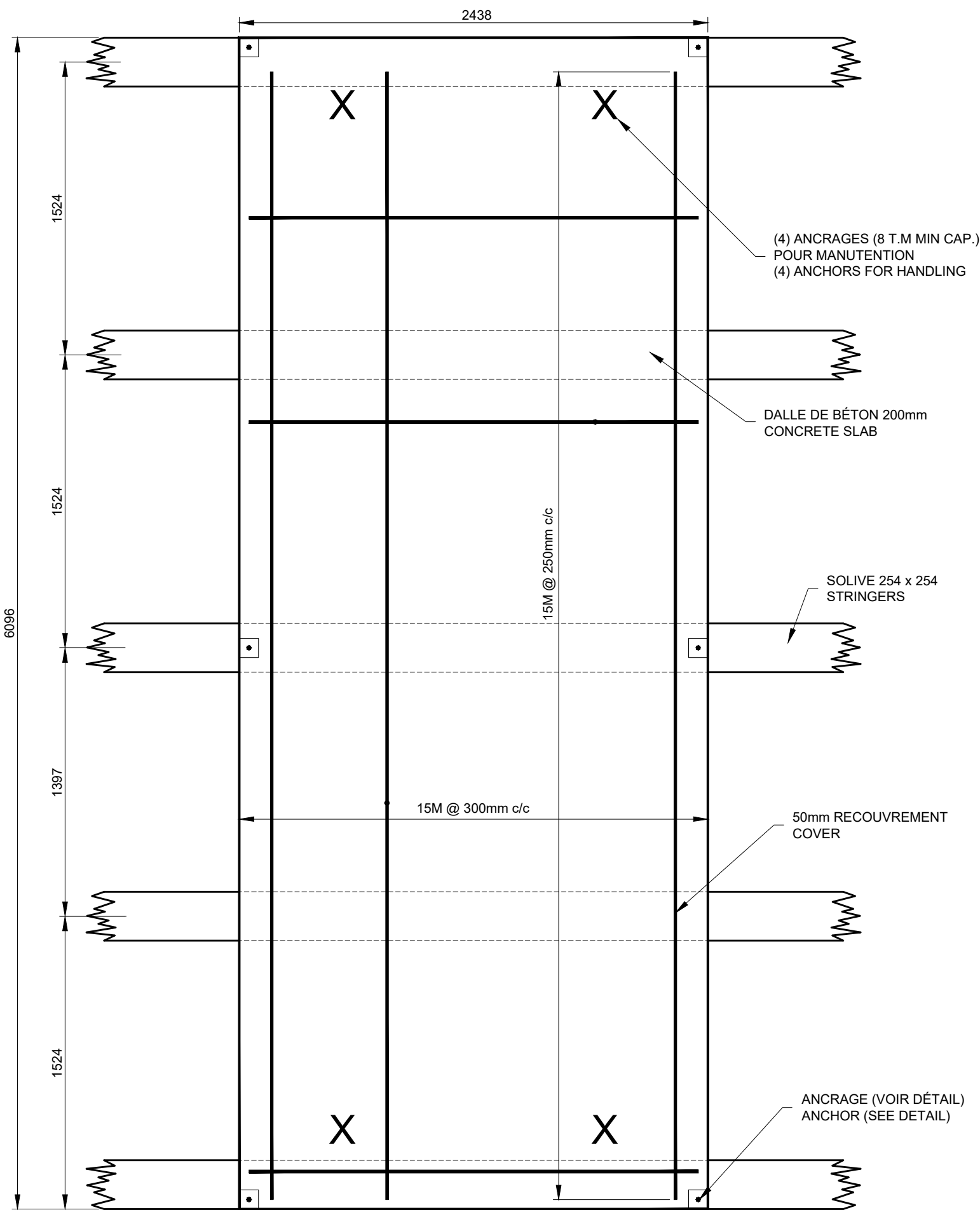
No. dossier: 100000716
 No. dessin: 100000716
 No. feuille: 11/15





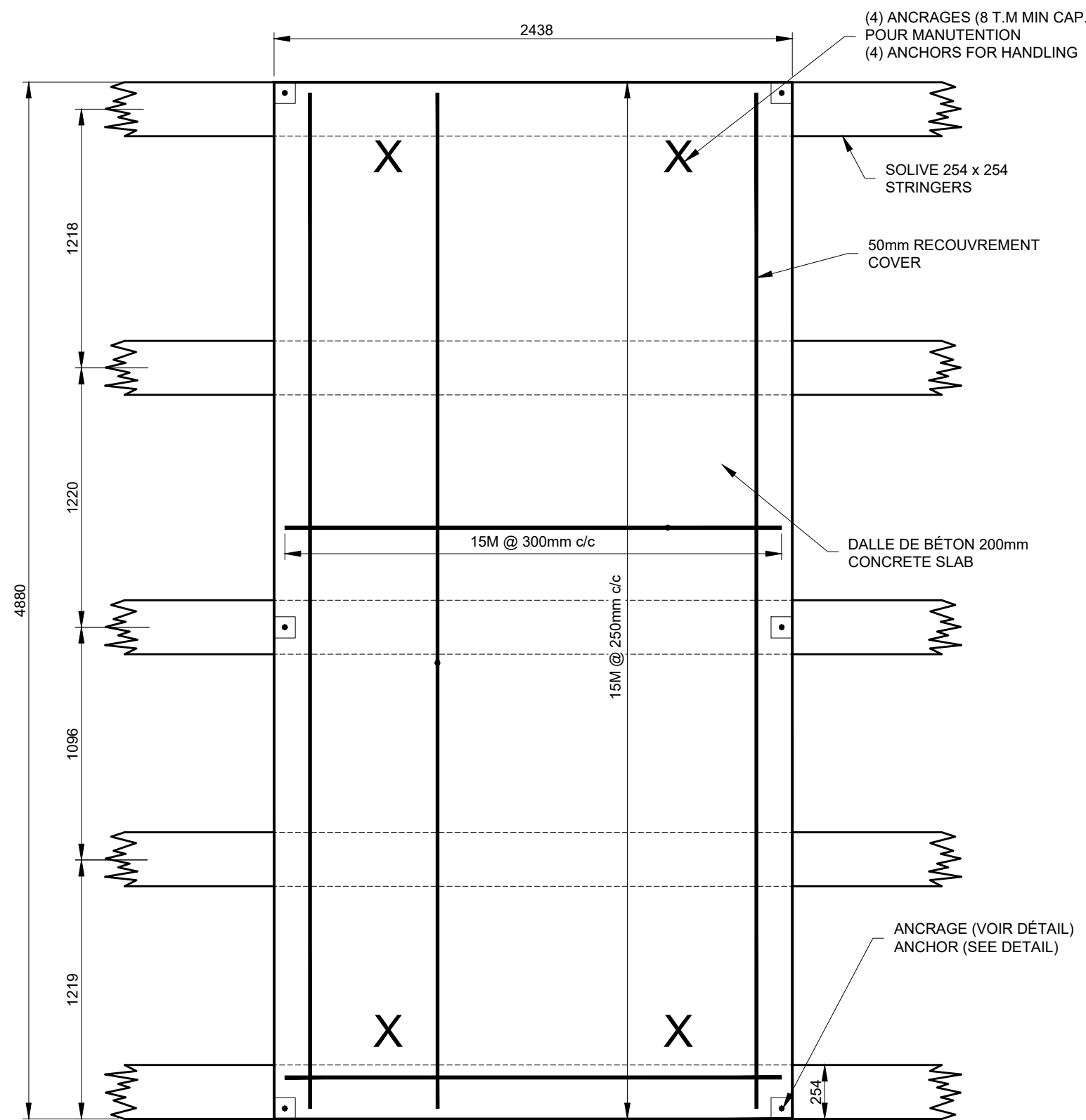


Port de pêche de Québec
Région du Québec



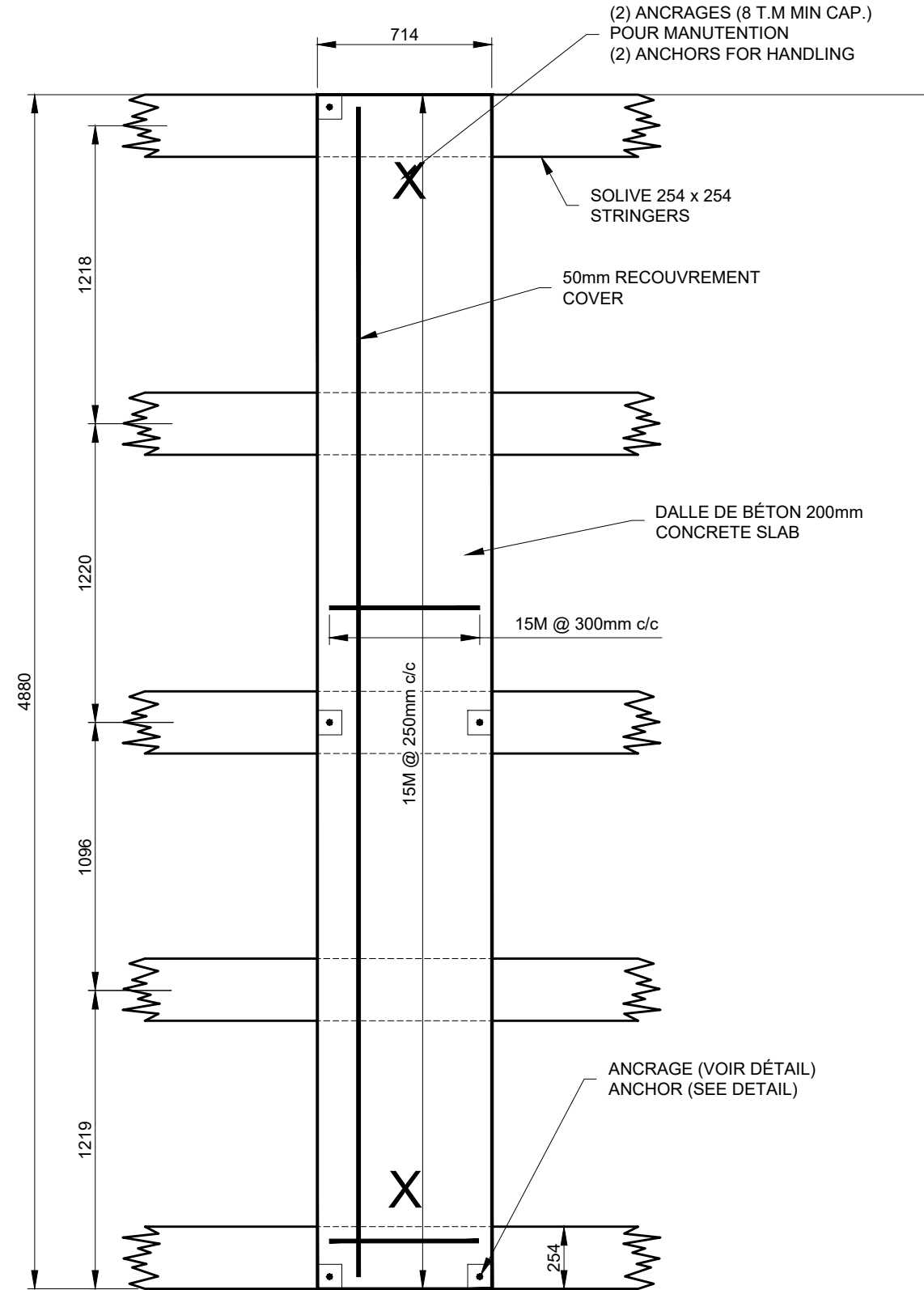
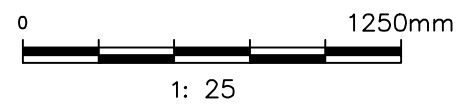
QTÉ / QTY: 9

DALLE #1 PRÉFABRIQUÉE
#1 PRECAST SLAB



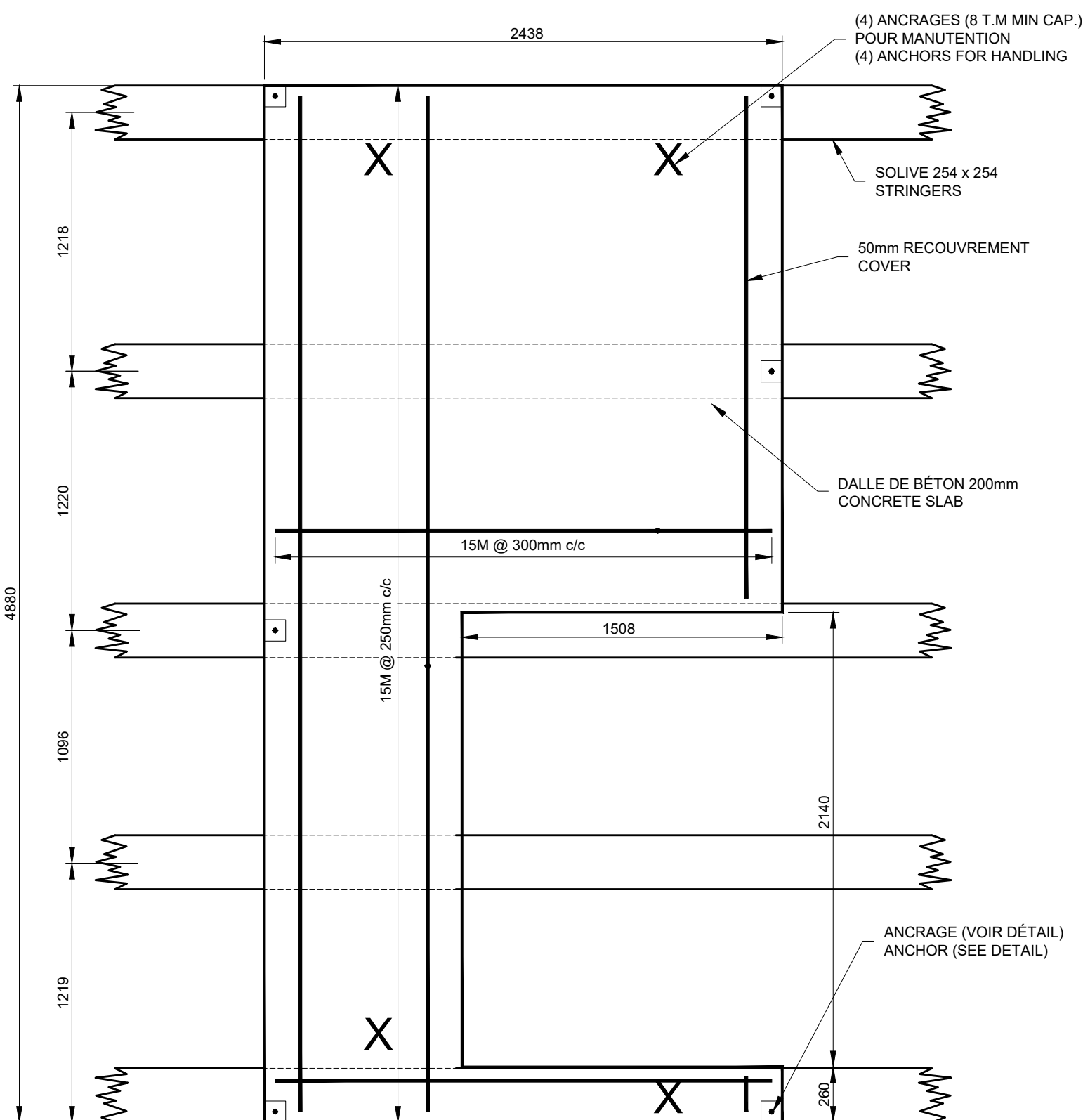
QTÉ / QTY: 24

DALLE #2 PRÉFABRIQUÉE
#2 PRECAST SLAB



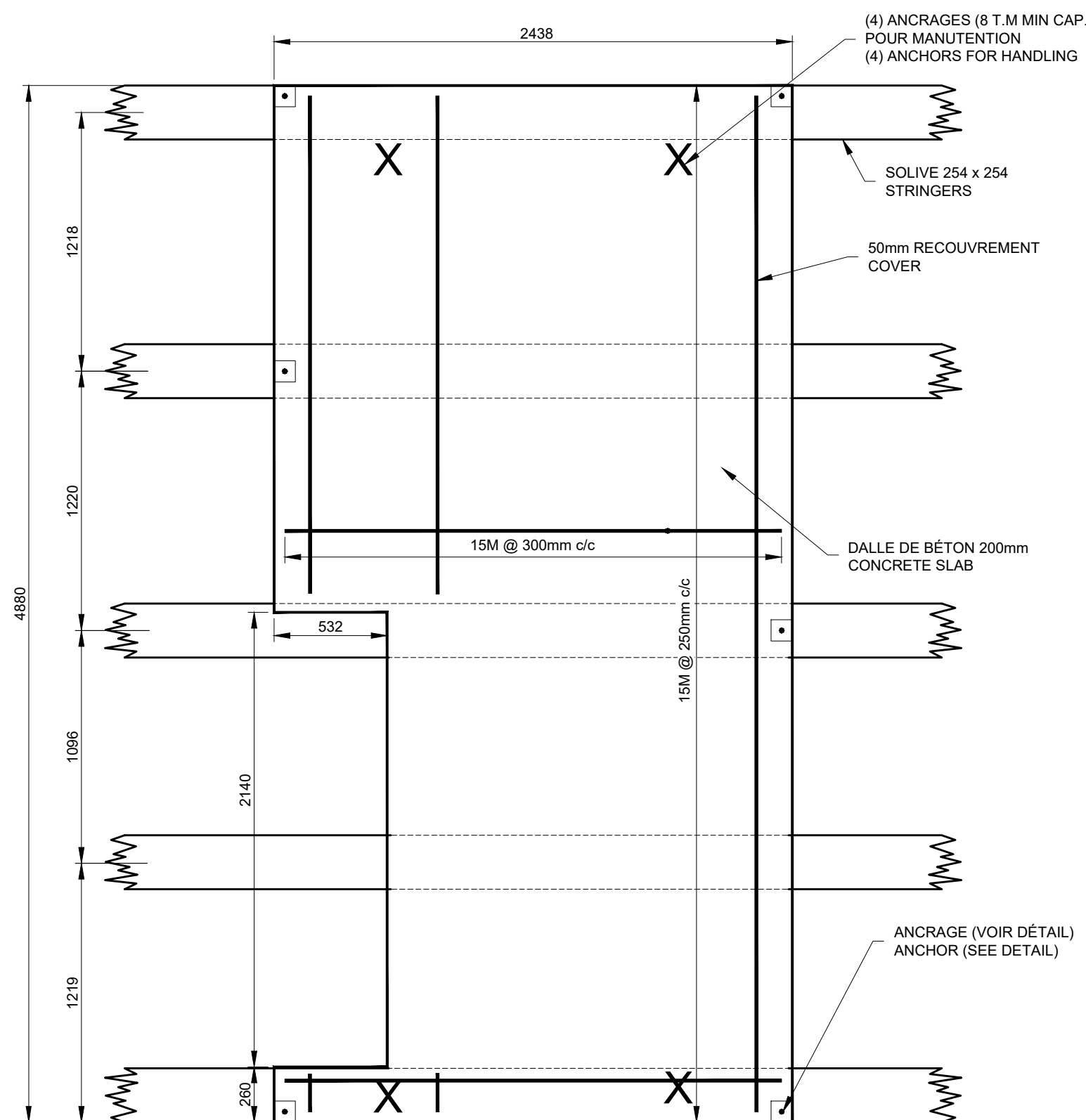
QTÉ / QTY: 1

DALLE #3 PRÉFABRIQUÉE
#3 PRECAST SLAB



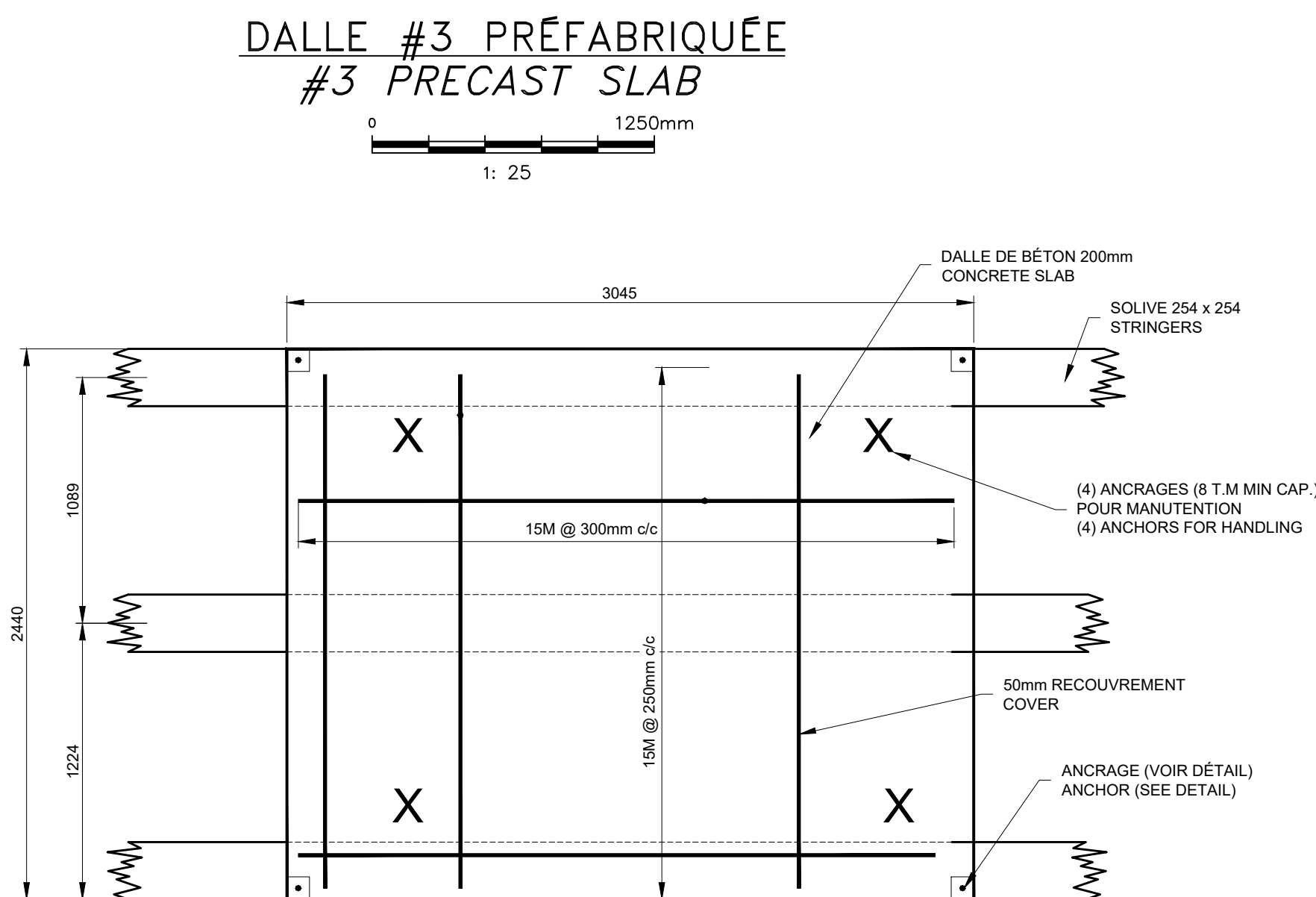
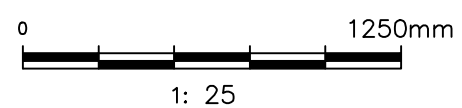
QTÉ / QTY: 1

DALLE #4 PRÉFABRIQUÉE
#4 PRECAST SLAB



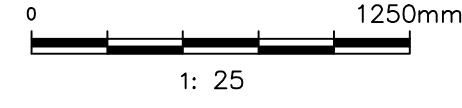
QTÉ / QTY: 1

DALLE #5 PRÉFABRIQUÉE
#5 PRECAST SLAB



QTÉ / QTY: 1

DALLE #6 PRÉFABRIQUÉE
#6 PRECAST SLAB



POUR SOUMISSION / FOR TENDER

Révision Description

A: Numéro du détail
B: Feuille sur laquelle le détail est référencé
C: Feuille sur laquelle le détail est dessiné

Toute modification doit être rapportée à:

Dossier: ST-GODEFROI

REVITALISATION DU HAVRE

HARBOUR REVITALIZATION

Dessiné par: DÉTAILS DALLES BÉTON PRÉFABRIQUÉES

CONÇU PAR: Y GINGRAS ing.

DATE: 2021.05.12

VERIFIÉ PAR: L. MALLET

DATE: 2021.05.12

APPROUVÉ PAR:

DATE:

NO. DOSSIER: 100000716

INDIQUÉE

PPB21-3814-M01-02

14/15