

NATIONAL RESEARCH COUNCIL CANADA MONTREAL ROAD CAMPUS Ottawa, Ontario, Canada

PREPARED BY:
 REAL PROPERTY PLANNING AND MANAGEMENT
 ENGINEERING SERVICES (RPPM)
 1200 MONTREAL ROAD, M-19 (RM 340),
 OTTAWA, ONTARIO, CANADA K1A 0R6

PROJECT:
 PROJECT NO. = 6159
 BUILDING S-77
 3RD FLOOR SELF-GENERATING AUTOCLAVES

GENERAL NOTES

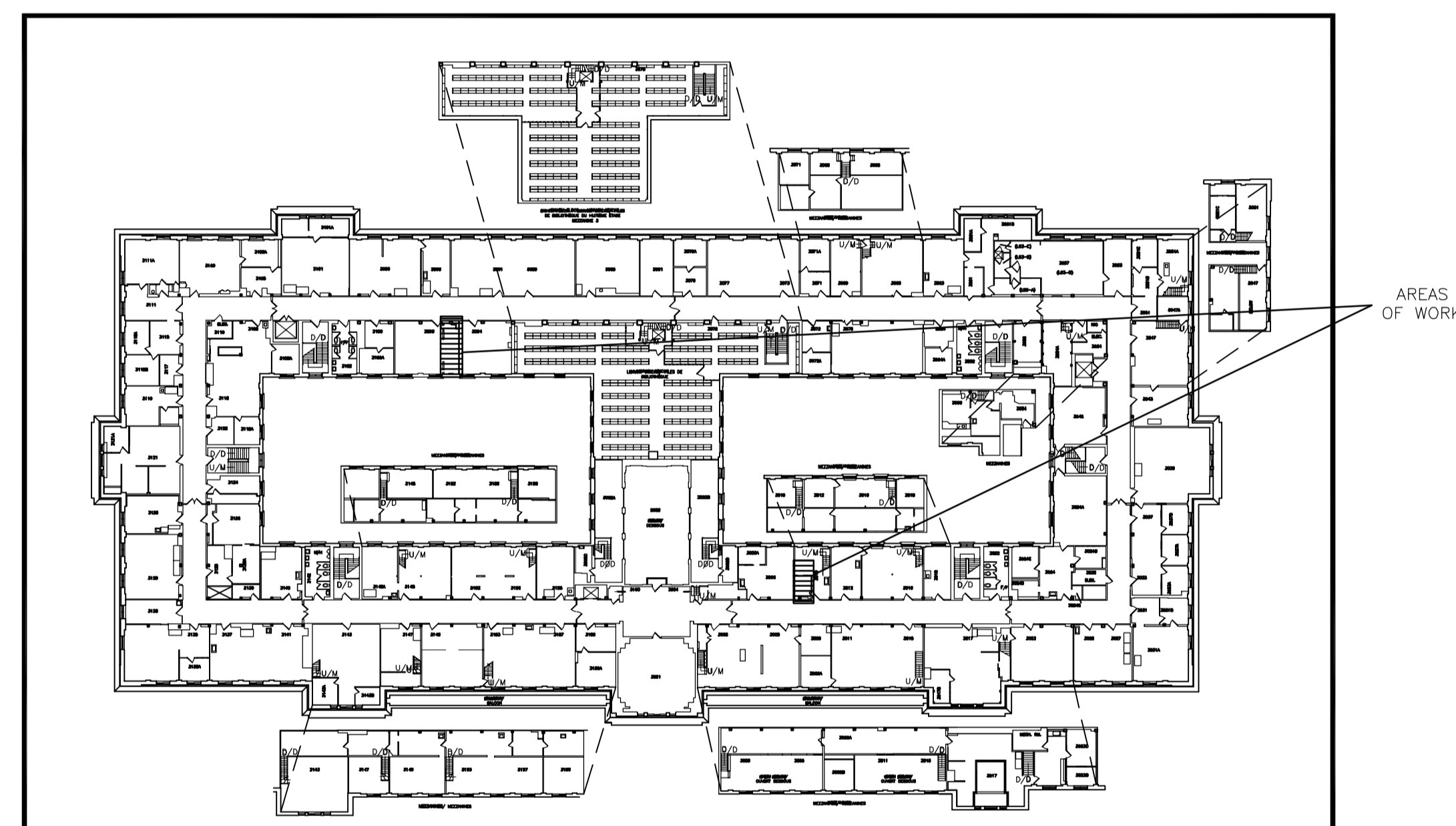
- CONTRACTOR TO VERIFY ALL DIMENSIONS AND CLEARANCES ON SITE PRIOR TO CONSTRUCTION AND REPORT ANY DISCREPANCIES AND/OR OMISSIONS TO DEPARTMENTAL REPRESENTATIVE.
- CONTRACTOR MUST VISIT THE SITE AND FULLY FAMILIARIZE THEMSELVES WITH THE SCOPE OF THE WORK PRIOR TO PROJECT COMMENCEMENT.
- ALL TRADES TO COORDINATE WORK ON SITE, WITH APPROVAL OF DEPARTMENTAL REPRESENTATIVE TO AVOID ANY CONFLICTS AND/OR INTERFERENCE.
- ANY AND ALL REQUIRED SHUTDOWNS SHALL BE COORDINATED WITH DEPARTMENTAL REPRESENTATIVE.
- INSTALLATION OF ALL SYSTEMS SHALL BE IN ACCORDANCE WITH APPLICABLE CODES AND STANDARDS.
- CONTRACTOR TO BE RESPONSIBLE FOR REINSTATEMENT AND REPAIR OF ANY DAMAGE CAUSED BY WORK.
- CONTRACTOR SHALL PREVENT THE SPREAD OF DUST AND DEBRIS BEYOND AREA OF WORK AND CLEAN ALL SURFACES AT COMPLETION.

ABBREVIATIONS:

AFF.	ABOVE FINISHED FLOOR	EPV	EXISTING PIPE VENT	GA.	GALV	GALVANIZED	REINF.	REINFORCING
AL.	ALUMINUM	EPVA	EXISTING PIPE VENT ACID		GPSBD	GYPSPUM BOARD	REQ'D	REQUIRED
A/V	AIR/VAPOUR	EPV#2	EXISTING PIPE VENT NITROGEN		G.C.	GENERAL CONTRACTOR	R.O.	ROUGH OPENING
APPROX.	APPROXIMATELY	EX	EXISTING		HORZ	HORIZONTAL	SIM	SIMILAR
CEIL.	CEILING	EW	EXISTING GUY WIRES		I.D.	INSIDE DIAMETER	SPEC	SPECIFICATIONS
CONC.	CONCRETE	ELAD	EXISTING LADDER		INCL	INCLUDING	SQ	SQUARE
CONT.	CONTINUOUS	EX.SHR	EXISTING EMERGENCY SHOWER STATION		ALV.	INSULATION	S.O.	STAINLESS STEEL
CONST.	CONSTRUCTION	E.E.W	EXISTING EYE WASH STATION		INT.	INTERIOR	STRCT	STRUCTURAL
COMP.	COMPLETELY	ERC/EH	EXISTING ROOF CURB / EXHAUST		MIN.	MINIMUM	SUS	SUSPENDED
C/W	COMPLETE WITH	ERD	EXISTING ROOF DRAIN		mm	MILLIMETRE	T&G	TONGUE & GROOVE
DIA.	DIAMETER	EXP	EXPANSION		N.I.C.	NOT IN CONTRACT	T&B	TOP & BOTTOM
DIAG.	DIAGONAL	EXT.	EXTERIOR		O.C.	ON CENTER	T/F	TOP OF FRAME
DWG.	DRAWING	E.W.	EYE WASH		O.D.	OUTSIDE DIAMETER	T/S	TOP OF STEEL
E.A.P.	EXISTING ACCESS PANEL	FIN	FINISH		O.F.	OPPOSITE FRAME	TYP	TYPICAL
E.F.D.	EXISTING FLOOR DRAIN	F.EXT	FIRE EXTINGUISHER		OPP.	OPPOSITE	U/S	UNDERSIDE
E.F.P.	EXISTING FLOOR PLATES	F.R.	FIRE RATED		POLY.	POLYETHYLENE	VERT	VERTICAL

DRAWING SHEET LIST:

COVER SHEET	6159-G00	- COVER SHEET - GENERAL DRAWING LIST - PROJECT INFO - KEY PLANS
ARCHITECTURAL, AND ELECTRICAL	6159-G01	- ARCHITECTURAL PLAN - ELECTRICAL SINGLE LINE DIAGRAM AND FLOOR PLAN
MECHANICAL	6159-M01	- RM. 3010 MECHANICAL PLANS: DEMOLITION AND NEW WORK
	6159-M02	- RM. 3096 MECHANICAL PLANS: DEMOLITION AND NEW WORK - EQUIPMENT SCHEDULE LEGEND AND DETAILS

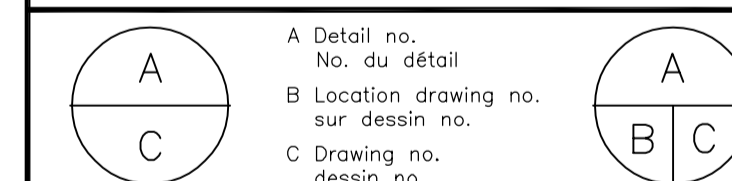


1 KEY PLAN LOCATION - S77 BUILDING
 G00 SCALE = N.T.S.

KEY PLAN PLAN CLÉ

0	DD MM YYYY	XXXX	???
No.	Date	Revision	By: / Par:

Date vérifiée sur le terrain et les conditions de travail pour être la même
 o Vérifier toutes les dimensions et l'état des lieux et en assumer la responsabilité



project ROOMS 3010 AND 3096 SELF-GENERATING AUTOCLAVES projet

SUSSEX CAMPUS (S77)

- COVER SHEET
 - GENERAL DRAWING LIST
 - PROJECT INFO
 - KEY PLANS

designed SF/CE/KL conçu date JUNE 2022 date

drawn SF. dessiné scale AS INDICATED échelle

checked A.S. vérifié sheet 1 of/de 4 feuille

approved A.L.S. approuvé W.O.no. D.T.no.

dwg.no. 6159-G00 dessin no.



11



12



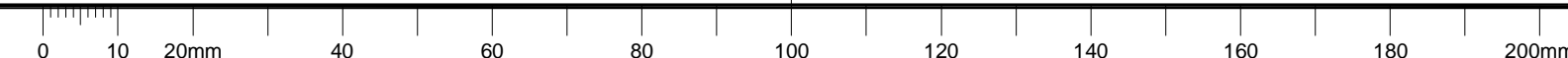
13



14

2 MISC. PICS - ROOMS 3010 AND 3096
 G00 N.T.S.

C

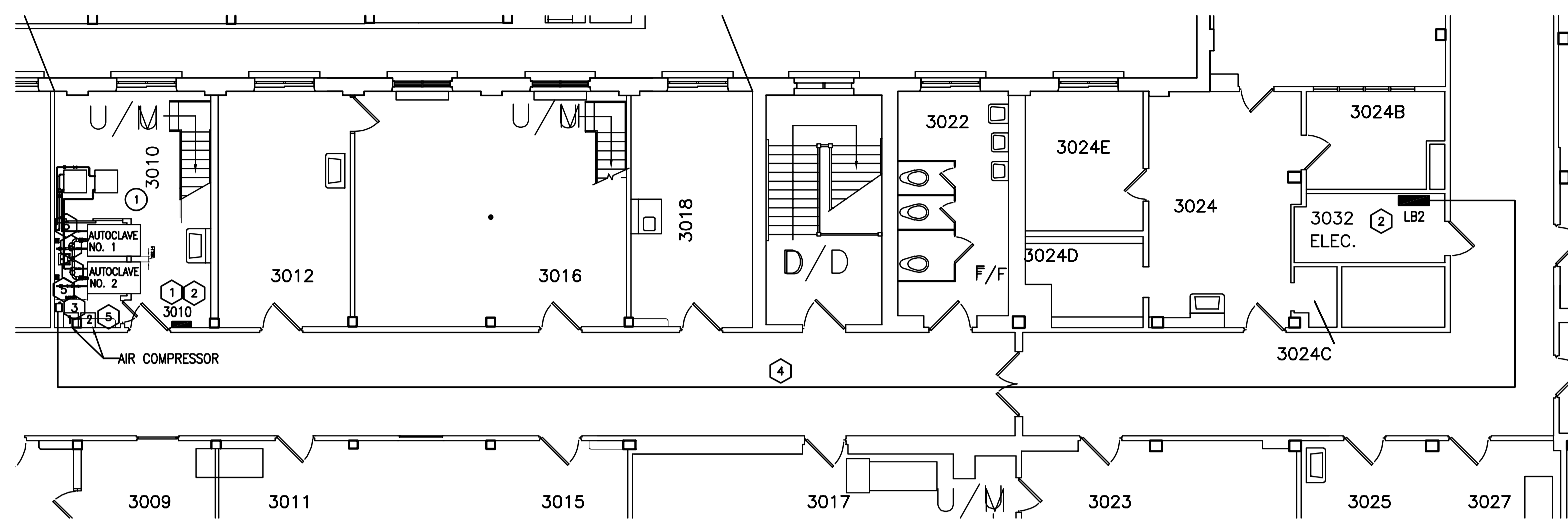


GENERAL NOTES

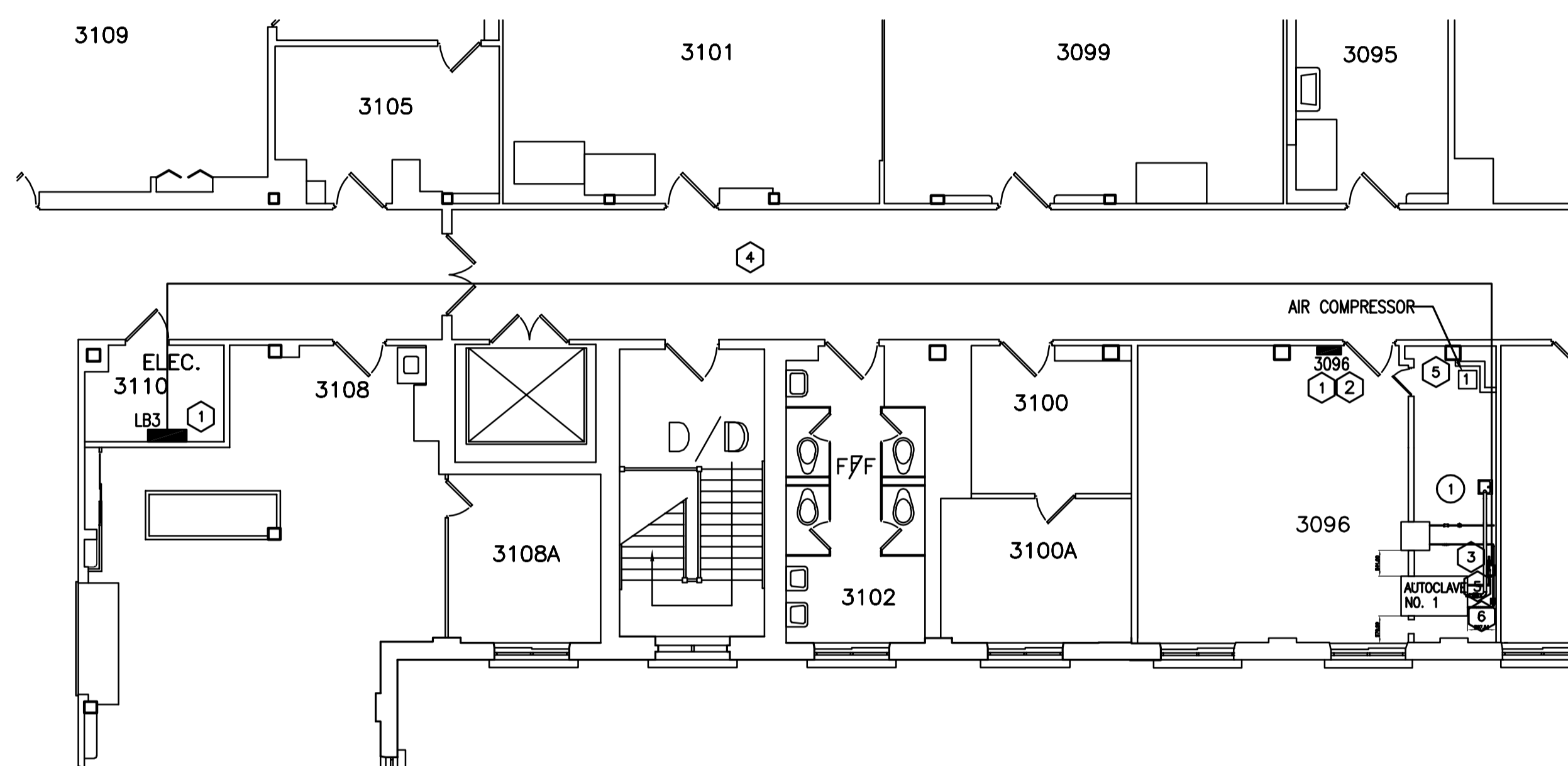
- CONTRACTOR TO VERIFY ALL DIMENSIONS AND CLEARANCES ON SITE PRIOR TO CONSTRUCTION AND REPORT ANY DISCREPANCIES AND/OR OMISSIONS TO DEPARTMENTAL REPRESENTATIVE.
- CONTRACTORS MUST VISIT THE SITE AND FULLY FAMILIARIZE THEMSELVES WITH THE SCOPE OF THE WORK PRIOR TO PROJECT COMMENCEMENT.
- ALL TRADES TO COORDINATE WORK ON SITE, WITH APPROVAL OF DEPARTMENTAL REPRESENTATIVE TO AVOID ANY CONFLICTS AND/OR INTERFERENCE.
- ANY AND ALL REQUIRED SHUTDOWNS SHALL BE COORDINATED WITH DEPARTMENTAL REPRESENTATIVE.
- INSTALLATION OF ALL SYSTEMS SHALL BE IN ACCORDANCE WITH APPLICABLE CODES AND STANDARDS.
- CONTRACTOR TO BE RESPONSIBLE FOR REINSTATEMENT AND REPAIR OF ANY DAMAGE CAUSED BY WORK.
- CONTRACTOR SHALL PREVENT THE SPREAD OF DUST AND DEBRIS BEYOND AREA OF WORK AND CLEAN ALL SURFACES AT COMPLETION.

KEY PLAN

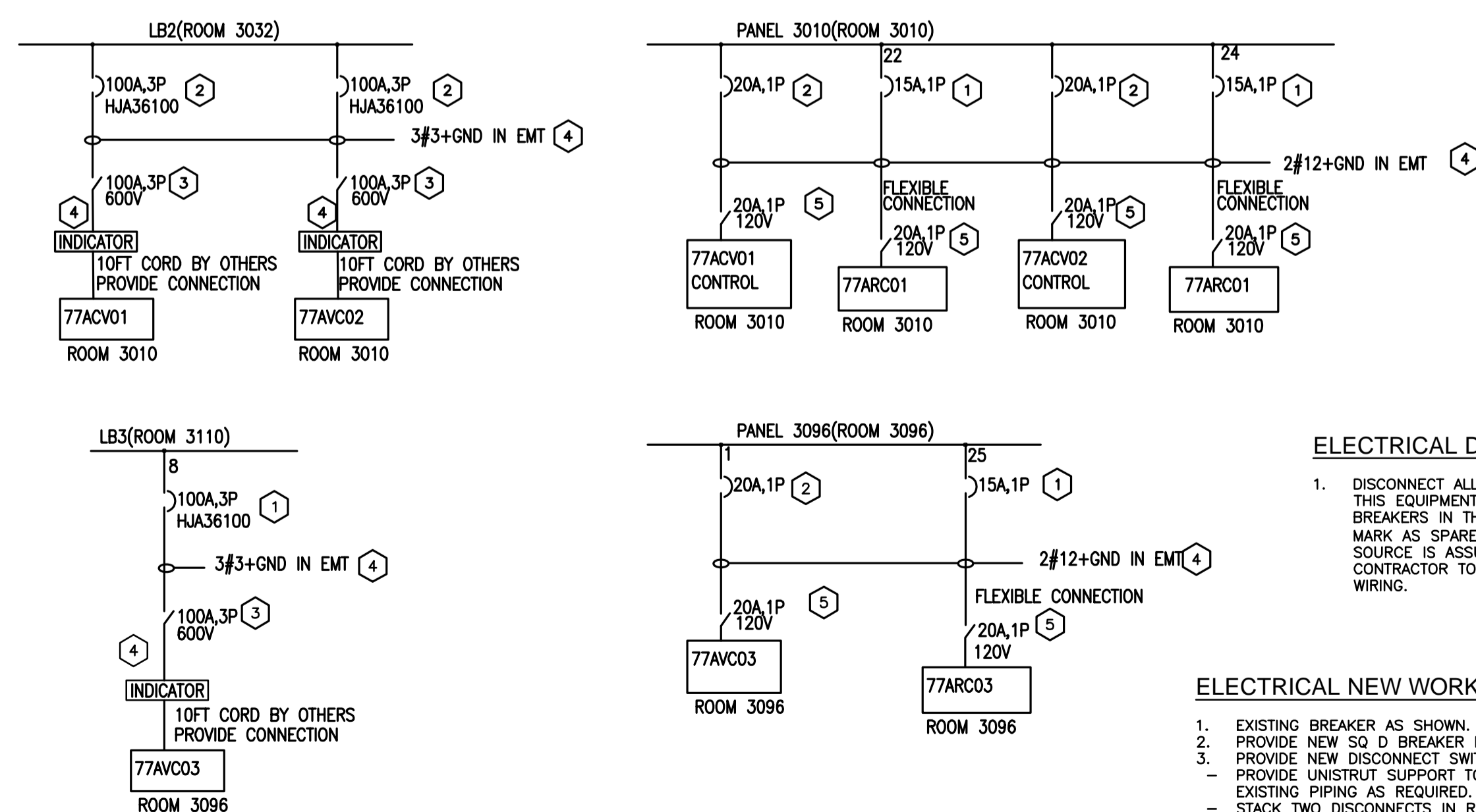
PLAN CLÉ



1
G01
3010 FLOOR PLAN
SCALE = 1:50



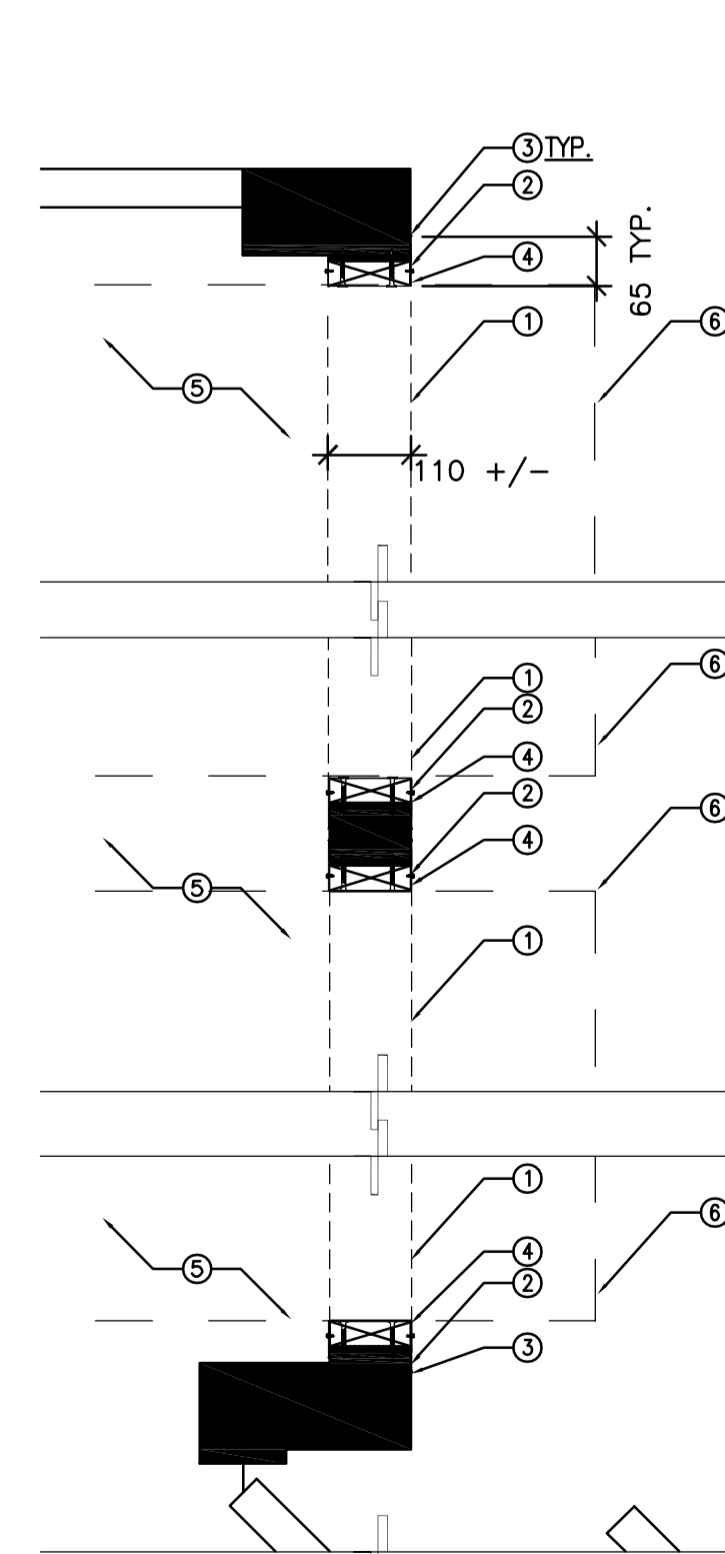
2
G01
3096 FLOOR PLAN
SCALE = 1:50



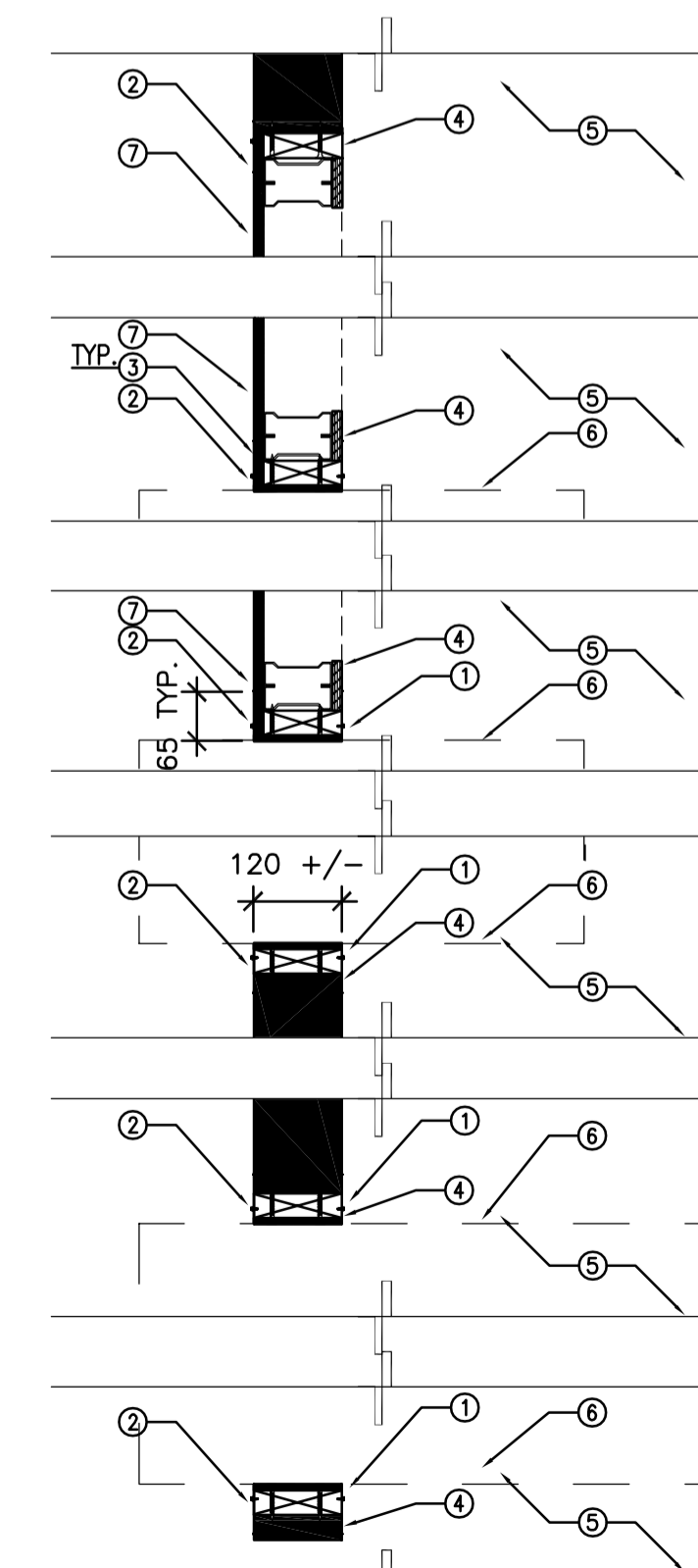
3
G01
SINGLE LINE DIAGRAM
SCALE =

- ELECTRICAL DEMOLITION NOTES:**
- DISCONNECT ALL ELECTRICAL SERVICES FROM THIS EQUIPMENT BACK TO SOURCE, LEAVE BREAKERS IN THE PANELS AND CLEARLY MARK AS SPARES (IF NOT BEING REUSED). SOURCE IS ASSUMED INSIDE SAME ROOM, CONTRACTOR TO TRACE THE EXISTING WIRING.

- ELECTRICAL NEW WORK NOTES:**
- EXISTING BREAKER AS SHOWN.
 - PROVIDE NEW SQ D BREAKER IN EXISTING PANEL.
 - PROVIDE NEW DISCONNECT SWITCH.
 - PROVIDE UNISTRUT SUPPORT TO OFFSET SWITCH FROM EXISTING PIPING AS REQUIRED.
 - STACK TWO DISCONNECTS IN ROOM 3010.
 - FINAL LOCATION AS PER SITE DIRECTION BY NRC.
 - PROVIDE NEW WIRING AND CONNECTION.
 - PROVIDE SURFACE MOUNT MOTOR RATED TOGGLE SWITCH ON WALL.
 - INSTALL INDICATOR PANEL SUPPLIED BY MANUFACTURER ON BACK WALL OF AUTOCLAVE.



4
G01
PLAN DETAIL @ AUTOCLAVE OPENINGS - ROOM 3010
SCALE = 1:10



5
G01
PLAN DETAIL @ AUTOCLAVE OPENINGS - ROOM 3096
SCALE = 1:10

ARCHITECTURAL DRAWING NOTES - SHEET G01
THESE NOTES APPLY TO DRAWING SHEET G01 ONLY

- DEMOTES EXISTING OPENING WHERE AUTOCLAVES HAVE BEEN REMOVED. REFER TO MECHANICAL DRAWINGS FOR MORE INFORMATION. WHERE EQUIPMENT HAS BEEN REMOVED, REPAIR ADJACENT AREAS TO SOUND MATERIAL AND MAKE READY FOR INFILL FRAMING.
- NEW 16 GAUGE, 304 MILL FINISHED STAINLESS STEEL WRAP-AROUND FRAME. FRAME TO BE BUTT JOINTED AND FASTENED TO SUBSTRATE WITH BI-METALLIC TYPE 304 SCREWS.
- NEW CLEAR CAULK AT ALL CONNECTIONS.
- BLOCKING AS REQUIRED TO PROVIDE STABLE SUBSTRATE FOR FRAMING.
- INFILL ALL PENETRATIONS, HOLES OR DAMAGE WHERE DUCTS/PIPES OR HANGERS HAVE BEEN REMOVED. FINISH TO MATCH ADJACENT SURFACES.
- NEW AUTOCLAVE. REFER TO MECHANICAL DRAWINGS AND SPECIFICATIONS FOR MORE INFORMATION.
- 13mm GYPSUM BOARD ON 64mm STEEL STUDS @600 o.c. TAPE, SAND AND MAKE READY FOR NEW PAINT FINISH: SEMI-GLOSS WHITE P1: SHERMAN WILLIAMS SW 7014 'EIDER WHITE'. SELECTION TO BE BASED ON ONE COLOUR. MIN THREE COATS TO MPI GLOSS LEVEL 2. BRUSH AND ROLLER APPLICATION ONLY. SUPPLY AND INSTALL NEW BASE TO MATCH EXISTING ADJACENT.

NOTE:

- CONTRACTOR TO REFER TO ALL DISCIPLINE'S DRAWINGS AND SPECIFICATIONS FOR EXTENT OF EQUIPMENT AND ALL ASSOCIATED ELEMENTS BEING REMOVED.
- COORDINATE ALL OPENINGS: NEW, EXISTING TO BE ENLARGED OR EXISTING TO BE FILLED WITH ALL DISCIPLINE'S DRAWINGS AND SPECIFICATIONS.
- AFTER ALL EQUIPMENT HAS BEEN REMOVED AND PRIOR TO NEW EQUIPMENT BEING INSTALLED, THE INTERIOR OF THE MECHANICAL SPACES ARE TO BEING THOROUGHLY CLEANED AND THE WALLS MADE READY TO RECEIVE NEW PAINT FINISH: SEMI-GLOSS WHITE P1: SHERMAN WILLIAMS SW 7014 'EIDER WHITE'. SELECTION TO BE BASED ON ONE COLOUR. MIN THREE COATS TO MPI GLOSS LEVEL 2. BRUSH AND ROLLER APPLICATION ONLY.

No.	Date	Revision	By:	Per:

Date Printed DD MM YYYY Date imprimée

- Verify all dimensions and site conditions and be responsible for same
- Vérifier toutes les dimensions et l'état des lieux et en assumer la responsabilité

A	A Detail no.	A
C	No. du détail	B
	B Location drawing no.	C
	sur dessin no.	
	C Drawing no.	
	dessin no.	

project ROOMS 3010 AND 3096 SELF-GENERATING AUTOCLAVES

SUSSEX ROAD CAMPUS

drawing ELECTRICAL SINGLE LINE DIAGRAM AND FLOOR PLAN ARCHITECTURAL PLAN

designed	conçu	date	date
KXL/CE		JULY/2022	
drawn	dessiné	scale	échelle
KXL/CE		AS NOTED	
checked	vérifié	sheet	feuille
		2 of/de 4	
approved	approuvé	W.O.no.	D.T.no.
ALS			

dwg.no. 6159-G01 dessin no.

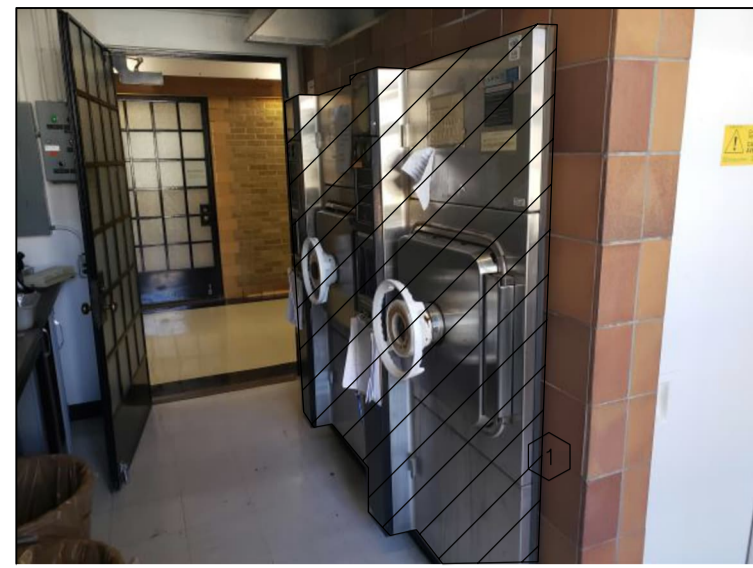


PHOTO NO.1 – EXISTING AUTOCLAVES AND PIPING REMOVAL (1)

1 MO1 SCALE = NTS

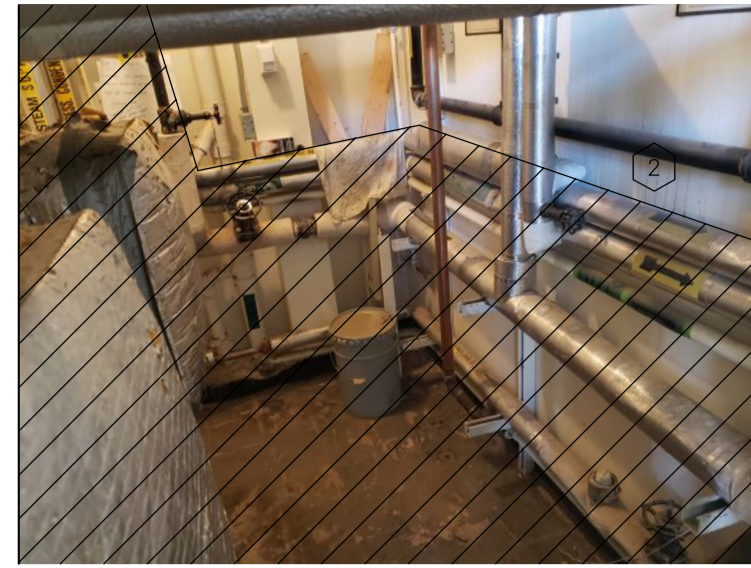


PHOTO NO.2 – EXISTING AUTOCLAVES AND PIPING REMOVAL (2)

2 MO1 SCALE = NTS



PHOTO NO.3 – EXISTING AUTOCLAVES AND PIPING REMOVAL (3)

3 MO1 SCALE = NTS

DEMOLITION NOTES:

- REMOVE EXISTING AUTOCLAVES, ELECTRICAL, AND CONTROLS COMPONENTS TO BE REMOVED BY DIVISION 26. DISPOSE OF ALL EQUIPMENT OFFSITE.
- REMOVE ENTIRE LENGTH OF STEAM SUPPLY, DRAIN PIPING, ACCESSORIES AND SUPPORTS IN THE AUTOCLAVES ROOM. CAP ALL MECHANICAL RELATED SERVICES. KEEP EXISTING DOMESTIC COLD WATER SUPPLY LINE.

LINE	DESCRIPTION
—	INDICATES NEW
—	INDICATES EXISTING (TO REMAIN)
---	INDICATES DEMOLISHED/ REMOVED
DCW	DOMESTIC COLD WATER
DRA	DRAIN PIPING
CA	COMPRESSED AIR

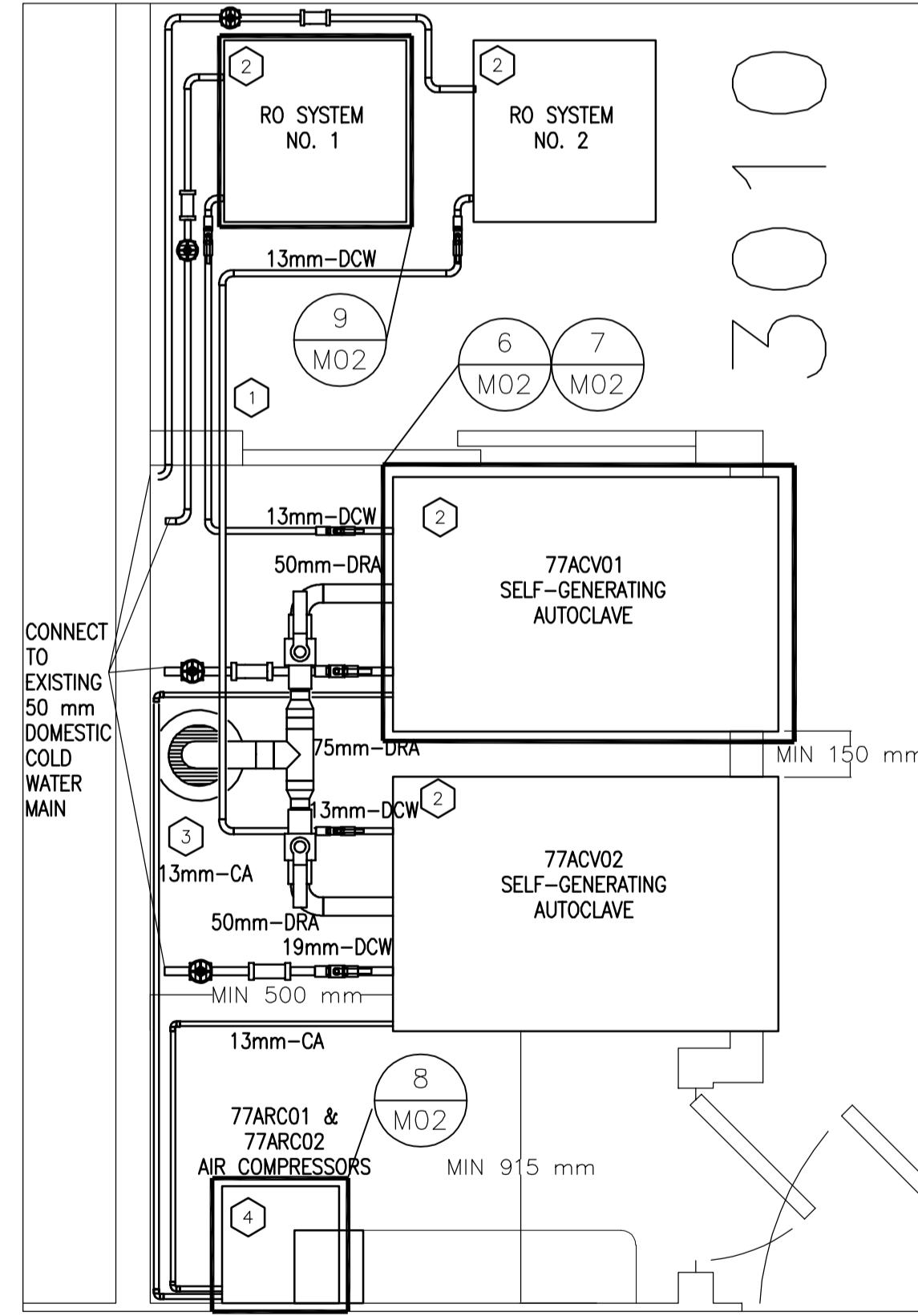
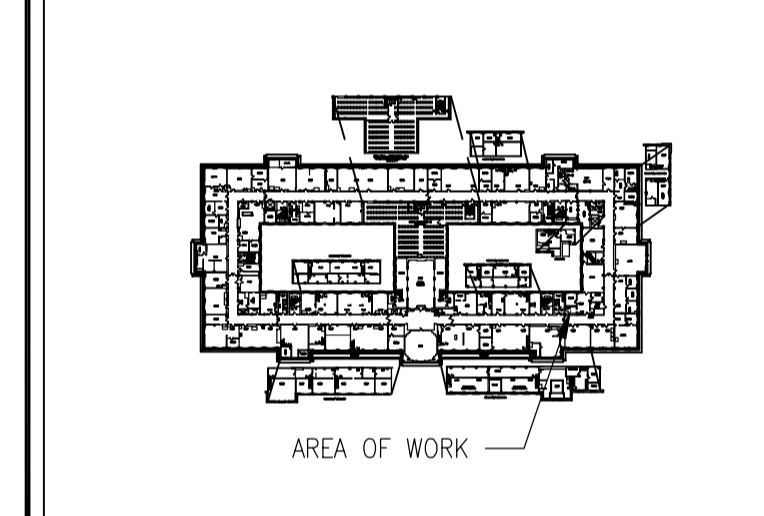
SYMBOL	DESCRIPTION
	VALVE
	VALVE – VERTICAL
	GATE VALVE
	BALL VALVE
	PRESSURE REDUCING VALVE
	2-WAY CONTROL VALVE – PNEUMATIC
	2-WAY CONTROL VALVE – DCC
	3-WAY CONTROL VALVE – PNEUMATIC
	3-WAY CONTROL VALVE – DCC
	BUTTERFLY VALVE
	CIRCUIT BALANCING VALVE
	PLUG VALVE
	ALARM VALVE
	LOCK SHIELD VALVE
	GLOBE VALVE
	CHECK VALVE
	SAFETY RELIEF VALVE
	DRAIN VALVE
	PRESSURE TRANSDUCING VALVE
	STRAINER
	WATER SHUTOFF VALVE
	PUMP
	STEAM TRAP
	CLEANOUT
	CLEANOUT – FLOOR
	THERMOMETER
	PRESSURE GAUGE
	PIPE UP
	PIPE DOWN
	SANITARY TRAP
	PETCOKE PLUG
	UNION
	CAP
	FLOOR DRAIN
	REDUCER – CONCENTRIC
	REDUCER – ECCENTRIC
	AIR VENT
	VACUUM BREAKER
	FLOW METER
	PRESSURE SENSOR (DCC)



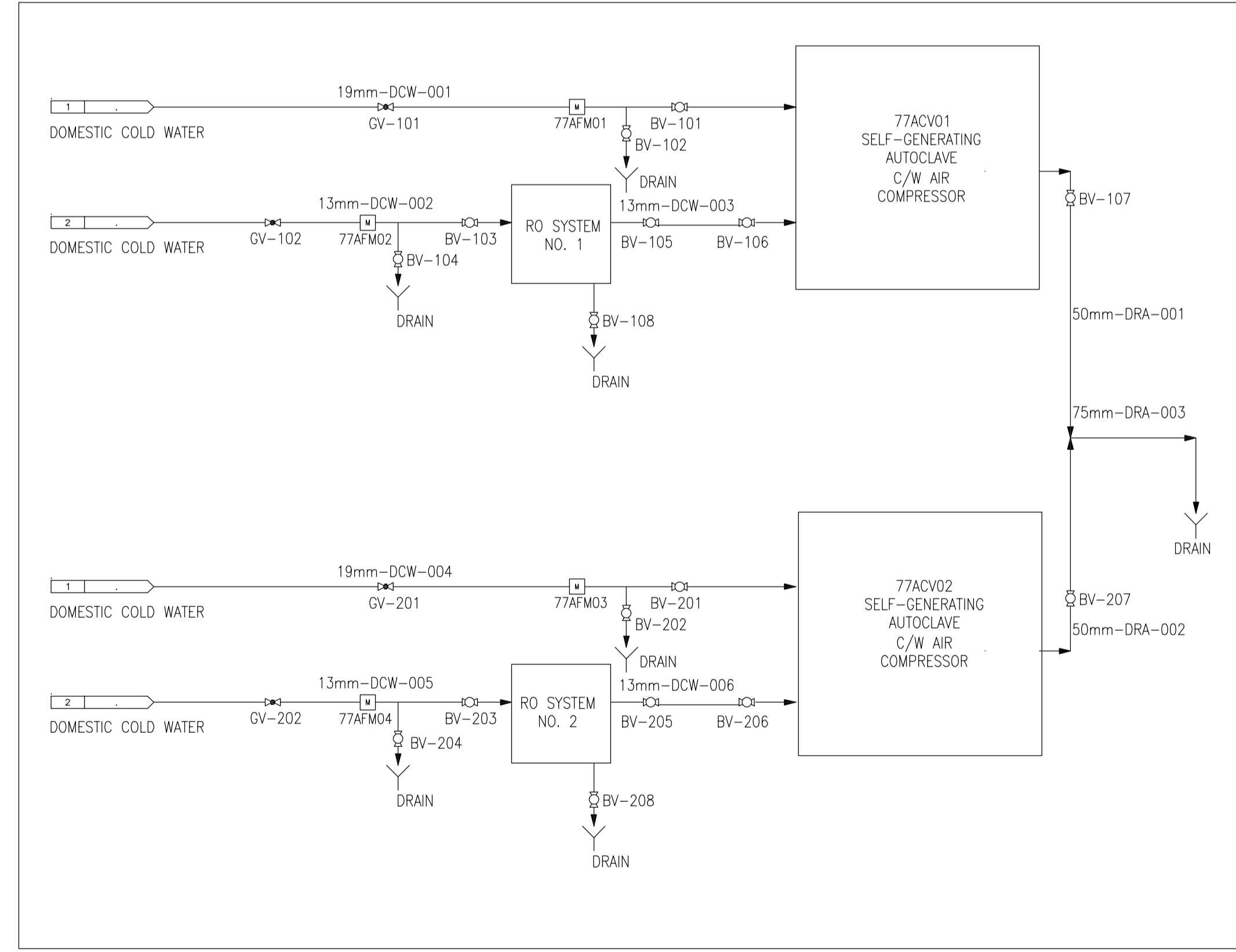
GENERAL NOTES

- CONTRACTOR TO VERIFY ALL DIMENSIONS AND CLEARANCES ON SITE PRIOR TO CONSTRUCTION AND REPORT ANY DISCREPANCIES AND/OR OMISSIONS TO DEPARTMENTAL REPRESENTATIVE.
- CONTRACTOR MUST VISIT THE SITE AND FULLY FAMILIARIZE THEMSELVES WITH THE SCOPE OF THE WORK PRIOR TO PROJECT COMMENCEMENT.
- ALL TRADES TO COORDINATE WORK ON SITE, WITH APPROVAL OF DEPARTMENTAL REPRESENTATIVE TO AVOID ANY CONFLICTS AND/OR INTERFERENCE.
- ANY AND ALL REQUIRED SHUTDOWNS SHALL BE COORDINATED WITH DEPARTMENTAL REPRESENTATIVE.
- INSTALLATION OF ALL SYSTEMS SHALL BE IN ACCORDANCE WITH APPLICABLE CODES AND STANDARDS.
- CONTRACTOR TO BE RESPONSIBLE FOR REINSTATEMENT AND REPAIR OF ANY DAMAGE CAUSED BY WORK.
- CONTRACTOR SHALL PREVENT THE SPREAD OF DUST AND DEBRIS BEYOND AREA OF WORK AND CLEAN ALL SURFACES AT COMPLETION.

KEY PLAN PLAN CLÉ



4 FLOOR PLAN – NEW WORK
SCALE = 1:20



5 PIPING AND INSTRUMENTATION DIAGRAM – NEW WORK
SCALE = NTS

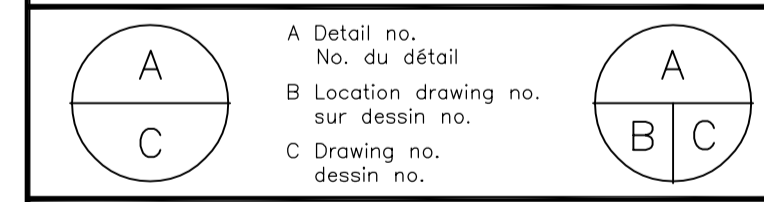
UNIT	MANUFACTURER	MODEL	LOCATION	INTERIOR CHAMBER DIMENSIONS	WEIGHT	ELECTRICAL	
				mm x mm x mm		Kg	V/PH/Hz
77ACV01	TUTTNAUER	5596-EP-V-CS	3010	508 x 508 x 965	725	208/3/60	84
77ACV02	TUTTNAUER	5596-EP-V-CS	3010	508 x 508 x 965	725	208/3/60	84
77ACV03	TUTTNAUER	5596-EP-V-CS	3096	508 x 508 x 965	725	208/3/60	84

UNIT	MANUFACTURER	MODEL	LOCATION	CONNECTIONS	FLOW RANGE	MAX WORKING PRESSURE	OPERATING TEMPERATURE
					L/MIN	kPa	°C
77AFM01	FLOMEC	TM05	3010	13mm NPT	3.8 – 38	153	0 – 60
77AFM02	FLOMEC	TM07	3010	19mm NPT	7.6 – 76	153	0 – 60
77AFM03	FLOMEC	TM05	3010	13mm NPT	3.8 – 38	153	0 – 60
77AFM04	FLOMEC	TM07	3010	19mm NPT	7.6 – 76	153	0 – 60
77AFM05	FLOMEC	TM05	3096	13mm NPT	3.8 – 38	153	0 – 60
77AFM06	FLOMEC	TM07	3096	19mm NPT	7.6 – 76	153	0 – 60

- NEW WORK NOTES:**
- PATCH, SEAL, AND MAKE GOOD ALL OPENINGS RELATED TO REMOVED AUTOCLAVES SYSTEM, INCLUDING BUT NOT LIMITED TO STEAM PIPING, AND CONDENSATE PIPING. PATCHING AND SEALING SHALL MATCH EXISTING WALLS. COORDINATE WITH ARCHITECTURAL TRADE TO MAKE GOOD ALL FINISHES IN THE MECHANICAL ROOM AFFECTED BY THE WORK.
 - PROVIDE NEW SELF-GENERATING AUTO-CLAVE WITH INTERIOR CHAMBER MINIMUM DIMENSIONS OF 500mm X 500mm X 950mm AND STAINLESS STEEL ELECTRIC STEAM GENERATOR C/W AIR COMPRESSOR AND RO SYSTEM SUPPLIED BY MANUFACTURER. REFER TO DETAILS 6/M02, 7/M02, 8/M02, AND 9/M02.
 - CONNECT TO EXISTING DRAINAGE SYSTEM. FUNNEL DRAIN TO BE 2 PIPE DIAMETER LARGER TO ACCEPT ALL REQUIRED DRAINS AND NOT TO IMPEDE ON REQUIRED DRAINAGE SLOPE. NEW PIPING SHALL BE RUNNING ALONG FLOOR AT A 2.5% TOWARDS EXISTING FLOOR DRAIN.
 - PROVIDE NEW GALVANIZED METAL SHELVING 400 mm x 400 mm x 1400 mm FOR THE AIR COMPRESSORS. 14 GAUGE. REFER TO DETAIL 8/M02.
 - PROVIDE ALL PIPING, VALVES, SENSORS, ACCESSORIES AND SUPPORTS AS PER DETAIL 5/M01. INSTALL IN ACCORDANCE WITH APPROVED SCHEDULE OF WORK AND COORDINATE INSTALLATION WITH ELECTRICAL AND STRUCTURAL TRADES.
 - REVIEW ALL DRAWINGS AND CHECK DIMENSIONS PRIOR TO IMPLEMENTING THE WORK. REPORT ANY DISCREPANCIES TO THE DEPARTMENTAL REPRESENTATIVE FOR CLARIFICATION BEFORE PROCEEDING.

0	DD MM YYYY	XXXX	???
No.	Date	Revision	By: Par:
Date Printed	DD MM YYYY	Date Imprimée	

- Verify all dimensions and site conditions and be responsible for same
- Vérifier toutes les dimensions et l'état des lieux et en assumer la responsabilité



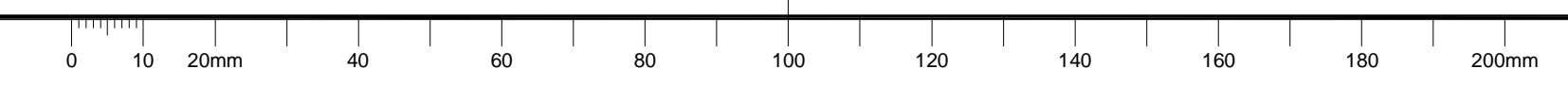
project ROOMS 3010 AND 3096 SELF-GENERATING AUTOCLAVES

SUSSEX BUILDING

drawing MECHANICAL DEMOLITION AND NEW WORK (1 OF 2)

designed	S.F.	conçu	date	MAY/2022	date
drawn	S.F.	dessiné	scale	AS INDICATED	échelle
checked	A.S.	vérifié	sheet	3 of/de 4	feuille
approved	ALS.	approuvé	W.O.no.		D.T.no.

dwg.no. 6159-M01 dessin.no.



GENERAL NOTES

- CONTRACTOR TO VERIFY ALL DIMENSIONS AND CLEARANCES ON SITE PRIOR TO CONSTRUCTION AND REPORT ANY DISCREPANCIES AND/OR OMISSIONS TO DEPARTMENTAL REPRESENTATIVE.
- CONTRACTOR MUST VISIT THE SITE AND FULLY FAMILIARIZE THEMSELVES WITH THE SCOPE OF THE WORK PRIOR TO PROJECT COMMENCEMENT.
- ALL TRADES TO COORDINATE WORK ON SITE, WITH APPROVAL OF DEPARTMENTAL REPRESENTATIVE TO AVOID ANY CONFLICTS AND/OR INTERFERENCE.
- ANY AND ALL REQUIRED SHUTDOWNS SHALL BE COORDINATED WITH DEPARTMENTAL REPRESENTATIVE.
- INSTALLATION OF ALL SYSTEMS SHALL BE IN ACCORDANCE WITH APPLICABLE CODES AND STANDARDS.
- CONTRACTOR TO BE RESPONSIBLE FOR REINSTATEMENT AND REPAIR OF ANY DAMAGE CAUSED BY WORK.
- CONTRACTOR SHALL PREVENT THE SPREAD OF DUST AND DEBRIS BEYOND AREA OF WORK AND CLEAN ALL SURFACES AT COMPLETION.

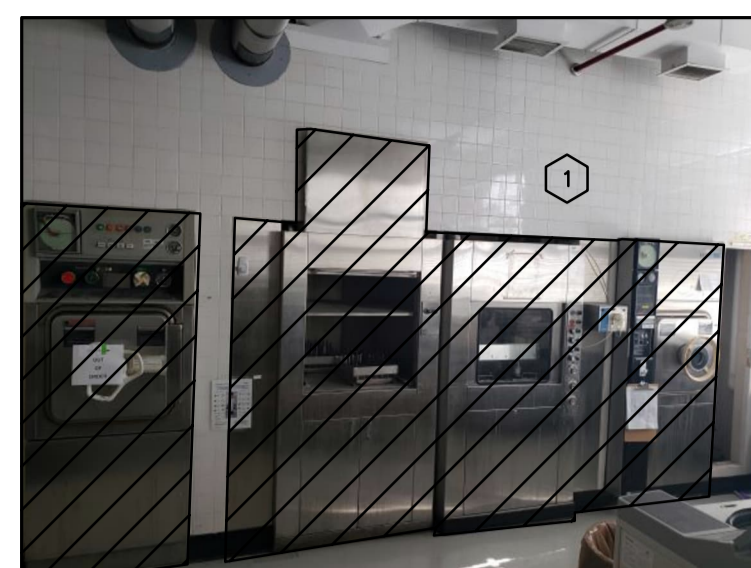


PHOTO NO.1 - EXISTING AUTOCLAVES AND PIPING REMOVAL (1)

1 MO2 SCALE = NTS

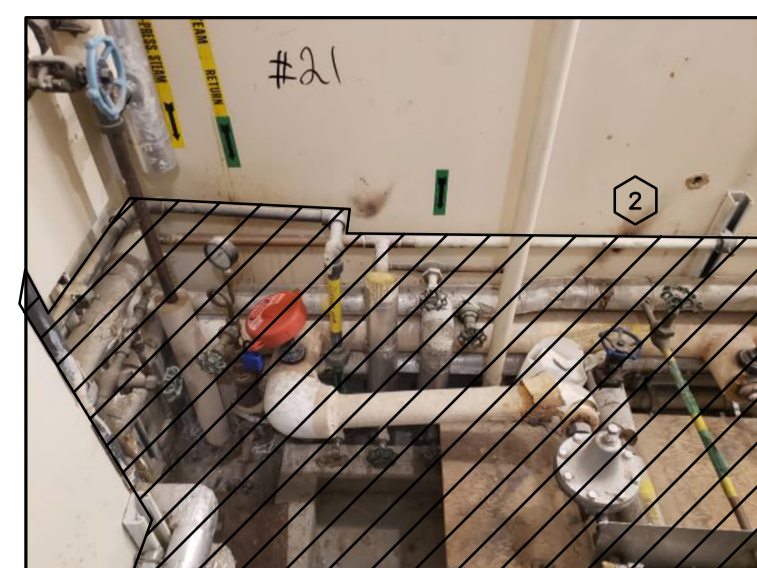


PHOTO NO.2 - EXISTING AUTOCLAVES AND PIPING REMOVAL (2)

2 MO2 SCALE = NTS

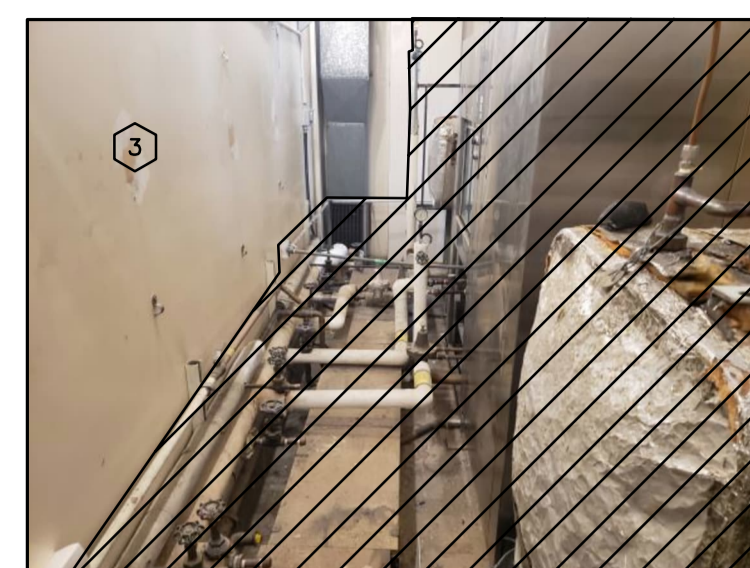
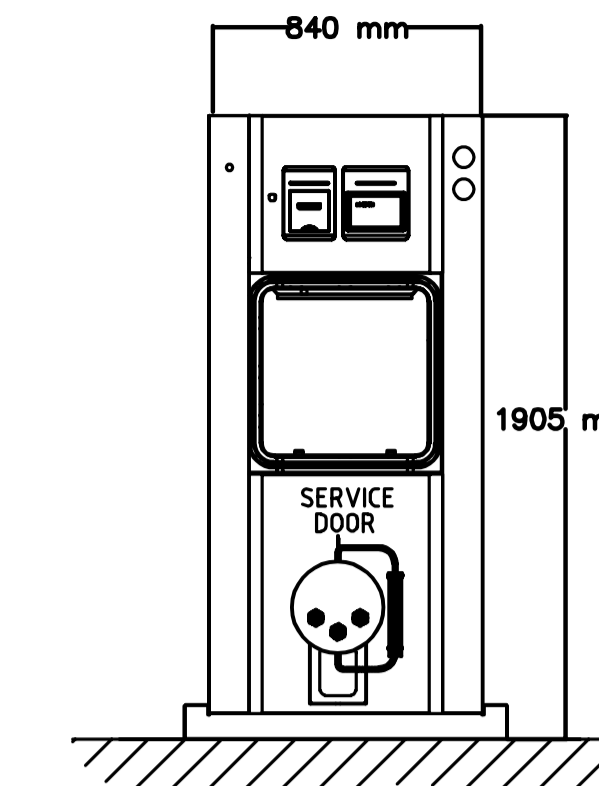


PHOTO NO.3 - EXISTING AUTOCLAVES AND PIPING REMOVAL (3)

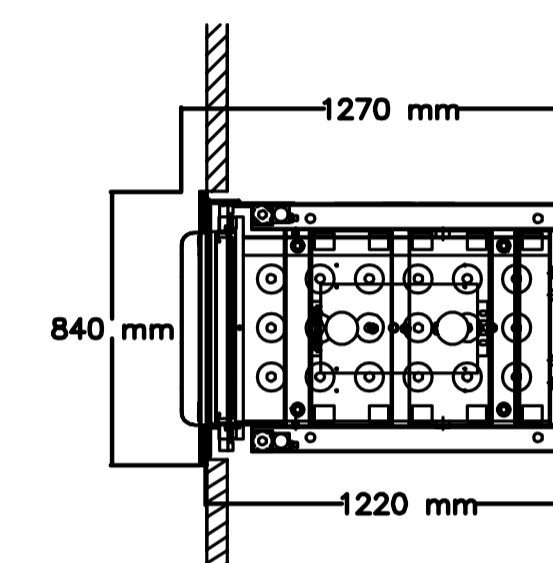
3 MO2 SCALE = NTS

DEMOLITION NOTES:

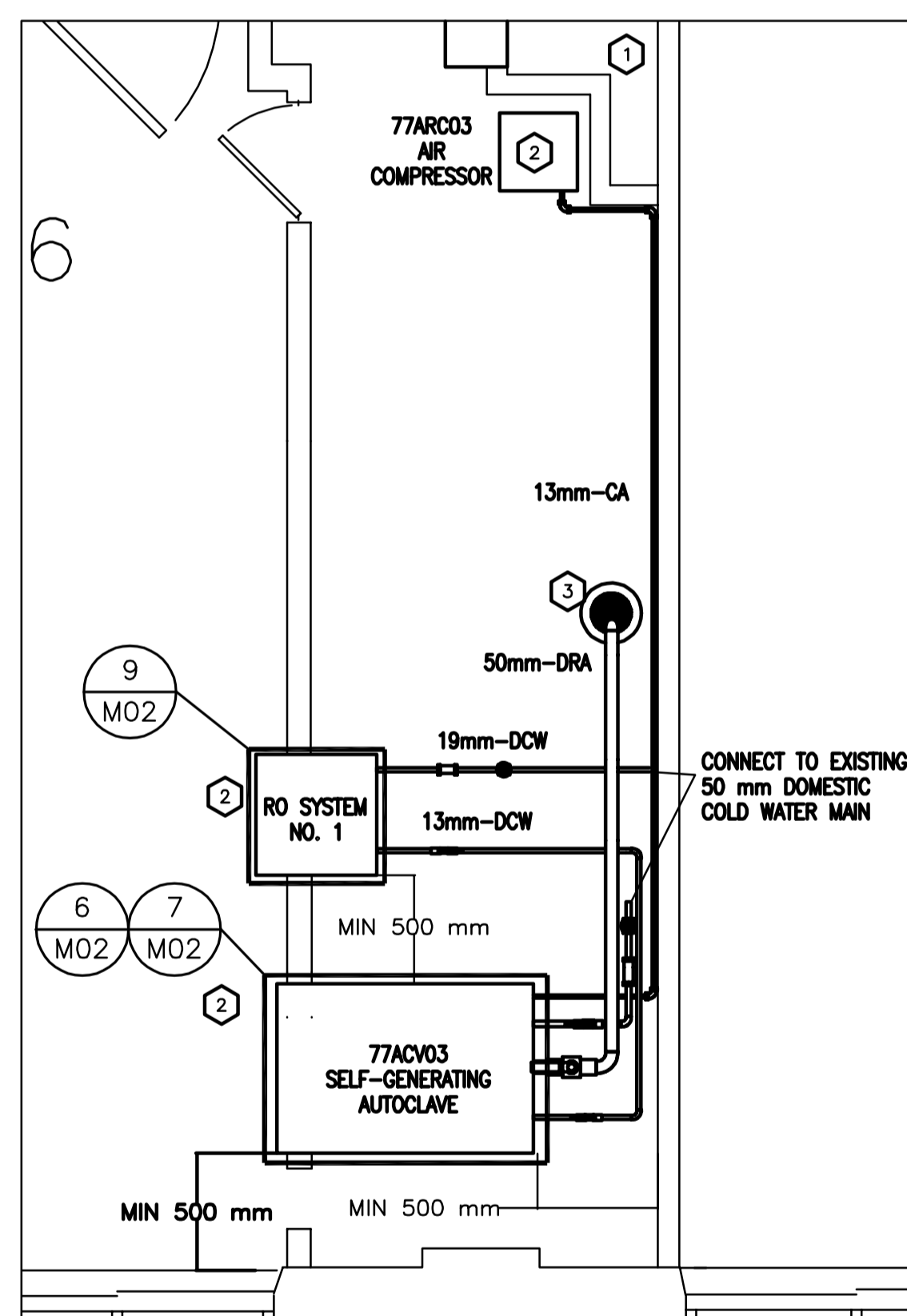
- REMOVE EXISTING AUTOCLAVES, ELECTRICAL, AND CONTROLS COMPONENTS TO BE REMOVED BY ELECTRICAL TRADE. DISPOSE OF ALL EQUIPMENT OFFSITE.
- REMOVE ENTIRE LENGTH OF STEAM SUPPLY, DRAIN PIPING, ACCESSORIES AND SUPPORTS IN THE AUTOCLAVES ROOM. CAP ALL MECHANICAL RELATED SERVICES. KEEP EXISTING DOMESTIC COLD WATER SUPPLY LINE.



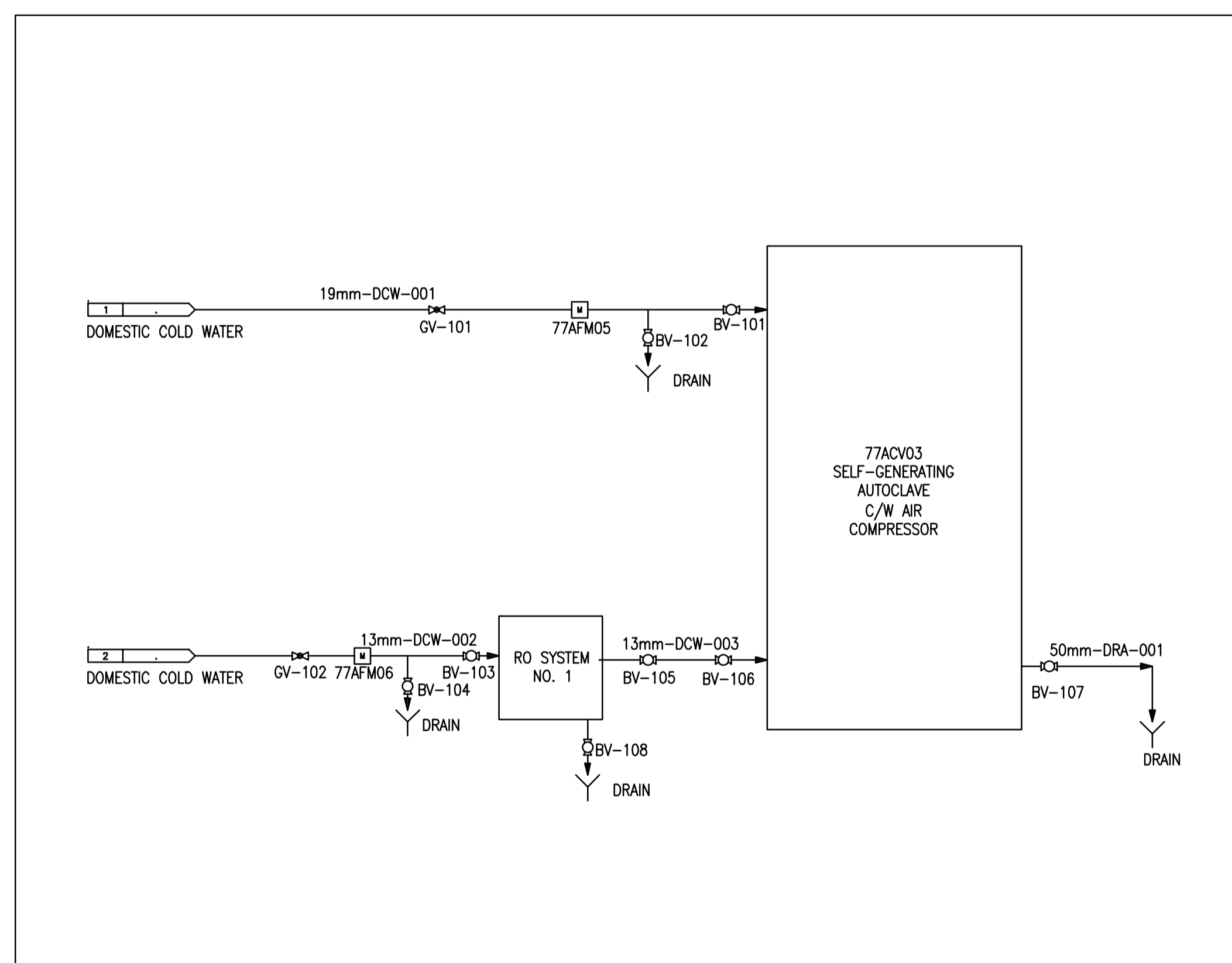
6 AUTOCLAVE ELEVATION VIEW DETAIL
SCALE = NTS



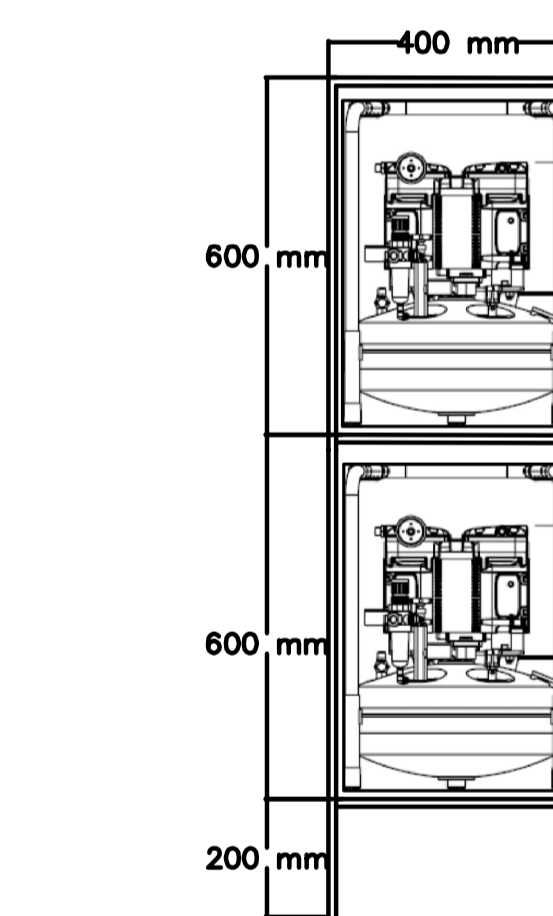
7 AUTOCLAVE PLAN VIEW DETAIL
SCALE = NTS



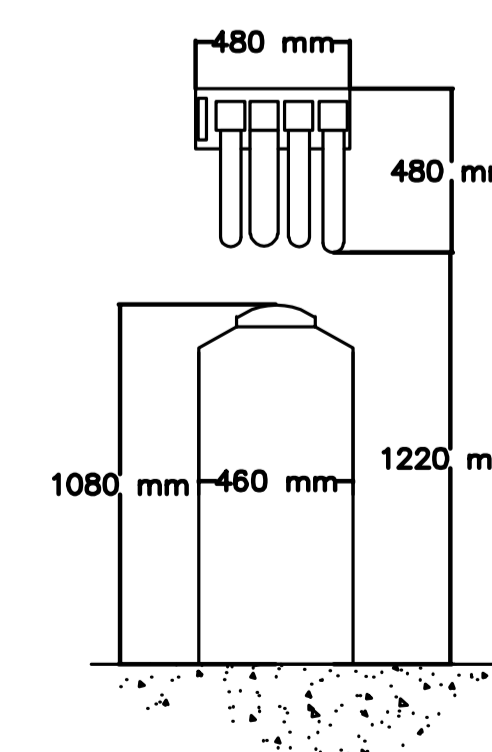
4 FLOOR PLAN - NEW WORK
SCALE = 1:20



5 PIPING AND INSTRUMENTATION DIAGRAM - NEW WORK
SCALE = NTS

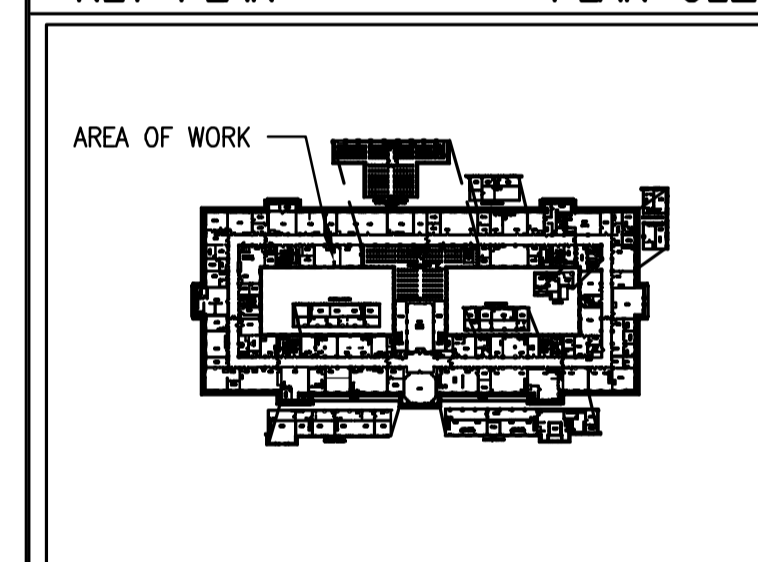


8 COMPRESSORS SHELVE DETAIL
SCALE = NTS



9 RO/DI SYSTEM DETAIL
SCALE = NTS

KEY PLAN PLAN CLÉ



0	DD MM YYYY	XXXX	???
No.	Date	Revision	By: Par:
Date Printed	DD MM YYYY	Date imprimée	

- Verify all dimensions and site conditions and be responsible for same
- Vérifier toutes les dimensions et l'état des lieux et en assumer la responsabilité

A	A Detail no. / No. du détail	A
B	B Location drawing no. / sur dessin no.	B
C	C Drawing no. / dessin no.	C

project / projet
ROOMS 3010 AND 3096 SELF-GENERATING AUTOCLAVES
 SUSSEX BUILDING
 drawing / dessin
MECHANICAL DEMOLITION AND NEW WORK (2 OF 2)

designed / conçu	S.F.	date	MAY/2022	date
drawn / dessiné	S.F.	scale	AS INDICATED	échelle
checked / vérifié	A.S.	sheet	4 of/de 4	feuille
approved / approuvé	ALS.	W.O.no.		D.T.no.

dwg.no. / dessin no.
6159-M02