



RETURN BIDS TO:

RETOURNER LES SOUMISSIONS À:

Bid Receiving Public Works and Government
Services Canada/Réception des soumissions Travaux
publics et Services gouvernementaux Canada
1713 Bedford Row
Halifax, N.S./Halifax, (N.É.)
Halifax
Nova Scotia
B3J 1T3
Bid Fax: (902) 496-5016

Revision to a Request for a Standing Offer

Révision à une demande d'offre à commandes

Regional Individual Standing Offer (RISO)

Offre à commandes individuelle régionale (OCIR)

The referenced document is hereby revised; unless
otherwise indicated, all other terms and conditions of
the Offer remain the same.

Ce document est par la présente révisé; sauf
indication contraire, les modalités de l'offre demeurent
les mêmes.

Comments - Commentaires

Vendor/Firm Name and Address

Raison sociale et adresse du
fournisseur/de l'entrepreneur

Issuing Office - Bureau de distribution

Atlantic Region Acquisitions/Région de l'Atlantique
Acquisitions
1713 Bedford Row
Halifax, N.S./Halifax, (N.É.)
Halifax
Nova Scot
B3J 1T3

Title - Sujet Black & Grey Water Flush-HMCS Ships Rinçage du système des eaux-vannes à bord des navires canadiens de Sa Majesté		
Solicitation No. - N° de l'invitation W3554-226336/A		Date 2022-09-16
Client Reference No. - N° de référence du client W3554-22-6336		Amendment No. - N° modif. 002
File No. - N° de dossier HAL-2-89008 (512)	CCC No./N° CCC - FMS No./N° VME	
GETS Reference No. - N° de référence de SEAG PW-\$HAL-512-11568		
Date of Original Request for Standing Offer		2022-08-29
Date de la demande de l'offre à commandes originale		
Solicitation Closes - L'invitation prend fin at - à 02:00 PM Atlantic Daylight Saving Time ADT on - le 2022-09-22 Heure Avancée de l'Atlantique HAA		
Address Enquiries to: - Adresser toutes questions à: Wadden, Dale		Buyer Id - Id de l'acheteur hal512
Telephone No. - N° de téléphone (782) 641-6472 ()		FAX No. - N° de FAX (902) 496-5016
Delivery Required - Livraison exigée		
Destination - of Goods, Services, and Construction: Destination - des biens, services et construction:		
Security - Sécurité This revision does not change the security requirements of the Offer. Cette révision ne change pas les besoins en matière de sécurité de la présente offre.		

Instructions: See Herein

Instructions: Voir aux présentes

Acknowledgement copy required	Yes - Oui	No - Non
Accusé de réception requis	<input type="checkbox"/>	<input type="checkbox"/>
The Offeror hereby acknowledges this revision to its Offer. Le proposant constate, par la présente, cette révision à son offre.		
Signature	Date	
Name and title of person authorized to sign on behalf of offeror. (type or print) Nom et titre de la personne autorisée à signer au nom du proposant. (taper ou écrire en caractères d'imprimerie)		
For the Minister - Pour le Ministre		

Solicitation amendment 002 is undertaken to:

- A. provide responses to questions received during the solicitation period;
- B. Adjust Technical specification amendments
- C. Adjust Solicitation document amendments

=====

A. Questions & Answers

Question 1:

7.16 and Annex A 3.2 refer to Confined Space work. Please confirm there is no confined space work required within this scope.

Response 1:

Confirmed. There is no requirement for confined space within this scope of work.

Question 2:

On Page 4 at the bottom of 2.1, there is a note about Delete 60 days, Insert 90 days. What does this refer to?

Response 2:

Refers to bid validation period:

The **2006** Standard Instructions - Request for Standing Offers - Goods or Services - Competitive Requirements, are incorporated by reference into and form part of the RFSO.

Subsection 5.4 of Standard instructions-goods and services-competitive requirements.
``Offers will remain open for acceptance for a period of not less than 60 days from the closing date of the RFSO, unless specified otherwise in the RFSO.``

Delete: 60 days

Insert: 90 days

Question 3:

Under Insurance requirement (Page 50) paragraph P indicates the CGL policy must have a watercraft exclusion.

- This is why we carry a Ship Repairers Liability policy. A CGL policy has a watercraft exclusion and underwriters won't amend it to include incidental repair operations. The watercraft exclusion is the entire reason you have to get a separate SRL policy.

We do cover the requirement given we carry a \$10,000,000 SRL, but not in the manner they are asking for.

Can we remove the requirement for the duplicate watercraft exclusion

Response 3:

Under Annex "E" 2. Commercial General Liability Insurance, line P.

We are removing the requirement for Contractors to carry duplicate watercraft exclusions in both the ship repairs liability insurance and comprehensive general liability insurance.

See : Solicitation Document Amendments

Question 4:

As per 4.1.2.1 Mandatory Technical Criteria line A.

1.A. In lieu of "Bidders shall provide four detailed examples of the firms experience", would it be deemed acceptable to amend as "Bidders shall provide four,(4),detailed examples of its or Project Management teams experience and skill set in providing similar black/grey water System Flushing Services onboard Ships, Submarines, or Auxiliary vessels

1.B in lieu of "in the last 6 years of similar size, scope, and complexity." would it be deemed acceptable "in the last 10 years of similar size, scope, and complexity.

Response 4:

Bidders shall provide four,(4),detailed examples of its or Project Management teams experience and skill set in providing similar black/grey water System Flushing Services onboard Ships, Submarines, or Auxiliary vessels, in the last ten (10) years, of similar size, scope, and complexity.

Question 5:

The attached JI 17/065 only describes the work to complete the decontamination and the hydro test, not the system flush with chemicals. Is there a separate document now or is there a piece missing from this JI?

Response 5:

Please see below generic job instruction (JI16/011) under Technical Specification Amendments

B. Technical Specification Amendments

As per Response 5:

Insert the below Job Instruction JI 16/011 under Annex “A” (Statement of Work)



Fleet Maintenance
Facility Cape Scott

Notification:
Order:
Sub Order:
Mech Eng JI: 16/011
Rev/Amend: -

NOTE

*This is a generic job instruction to be used on all Halifax class ships
with EC 20070065 installed.*

MECHANICAL ENGINEERING JOB INSTRUCTION (JI)
FOR
PRE-DOCKING PRESERVATION OF BLACK AND GREY WATER SYSTEM

APPLICABLE TO

HALIFAX CLASS

LOCATION

Various

ORIGINATOR: Tom Rex

PHONE: (902) 427-3805

APPROVED BY: Liam Jeffery
WCS Mech/Eng

DATE: March 3, 2016

PURPOSE/BACKGROUND: This JI provides guidance to flush and preserve the Black Water system as well as designated sections of the Grey Water system on Halifax class ships in preparation for Docking Work Period (DWP).

This JI is written for Canadian Patrol Frigates that have EC 20070065 installed showing the new configuration of the heads and wash places.

CROSS REFERENCE: NIL

NEI NUMBER: E-27-952-000

REFERENCES:

A.--	C-27-890-000/MS-002	Sewage Treatment Plant Model 15 MX3-1
B.--	C-27-952-000/ME-F01,	Acid Flushing Procedure – Black Water Collection System
C.--	C-27-952-000/MS-001	Operating and Maintenance Instructions for Vacuum Sewage Collection System
D.--	D-23-003-005/SF-002	Painting specification for HMC Ships
E.--	MARLANTORD 66-3	Lockout/Tag Out Program
F.--	MARLANTORD 66-7	Procedure for cleaning and working on sanitary tanks/systems
G.--	E3-4.6.09	FMFCS-Management System Work Instructions for Chemical Flush Procedure
H.--	CAL-D27-952-000-01	Grey Water Collection System Diagram, 2012-07-20
I.--	CAL-D27-952-000-02	Black Water Collection System Diagram, 2012-07-20

ANNEX(ES):

- | | |
|------|---|
| A.-- | Material Safety Data Sheet – Chemical Cleaner Phosphoric Acid-75 |
| B.-- | Black Water Manifold Disconnect and Removal and return line connection points - Illustration. |

DESCRIPTION OF WORK REQUIRED:

REMARKS:

The CONTRACTOR shall carry out the following work:		
1.00	<u>GENERAL</u>	
1.01	Prior to the start of the flush, Ship's Staff (SS) shall provide a single point of contact to coordinate operation of the Black and Grey Water system. The CONTRACTOR shall provide the SS single point of contact with a copy of this JI, complete with the MSDS.	
1.02	During the conduct of this JI, SS shall provide access to various ships compartments as required to complete the flush.	
1.03	The contractor is to supply the labour, tools, equipment and materials necessary to perform the work in this JI.	
1.04	All of the Black Water collection ejector pumps are to be Lockout - Tag Out in accordance with Ref. E.	
1.05	Remove the interface valve 905 for Part C of the flush Ref. I. Sheet 1.	
1.05.1	The Greywater Collection tanks are prone to over-filling when isolated from the Blackwater Collection system, and should be regularly monitored by SS during Blackwater Collection system flush.	
1.06	The work in this JI is conducted in 5 parts:	
1.06.1	Part A - Grey Water system flush – Designated Sections Only;	
1.06.2	Part B - Black Water Vacuum Collection system, Port Forward Zone;	
1.06.3	Part C - Black Water Vacuum Collection system, Starboard Forward and Aft Zone;	
1.06.4	Part D - Cleaning of black and grey water tanks, IAW Ref. F.; and	
1.06.5	Part E - Preservation of associated Valves, Pumps and Sewage Treatment Equipment.	
NOTE		
The Grey Water system flush is carried out prior to the Black Water system flush.		
1.07	Operation of the Black and Grey Water Collection system shall be in accordance with C-27-952-000/MS-001.	

DESCRIPTION OF WORK REQUIRED:

REMARKS:

- 2.00 PART A - GREY WATER COLLECTION SYSTEM FLUSH - DESIGNATED SECTIONS ONLY
- 2.01 Prior to commencing grey water flush, SS to ensure that all galley / servery sinks and dishwashers are marked out of bounds.
- 2.02 The designated sections of the Grey Water system to be flushed are listed in Table 1, below. Note that the grease traps accesses are through the deck in the compartments and locations noted in the table but they are illustrated in the reference drawing as deckhead piping items on the deck below.

TABLE 1 – GREY WATER DESIGNATED SECTIONS		
COMPARTMENT	LOCATION	EQUIPMENT
CO's Servery	1 Deck, FR 22, S	Sink, garburator. Grease trap (#60 at Ref. H.)
Wardroom Servery	2 Deck, FR 22, P	Sink, garburator, dishwasher. Grease trap (#61 at Ref. H.)
Dishwashing Compartment	3 Deck, FR 19, C/L	Sink, dishwasher. Grease traps (#62 and #63 at Ref. H.)
Galley	3 Deck, FR 24 – 25, S	Sink, garburator, dishwasher. Grease traps (#64, #65 and #98 at Ref. H.)
C&PO's Servery	3 Deck, FR 28, S	Sink, garburator, dishwasher. Grease trap (#66 at Ref. H.)

- 2.03 Before conducting chemical flush, rinse all sinks and associated piping with fresh water to ensure no clogs or leaks are present.
- 2.04 Cover grease trap access plates with plastic and secure with tape to prevent spillage of flushing solution. Do **NOT** open covers during flushing procedure.
- 2.05 All grey water drains from galley / servery sinks, dishwashers and garburators are to be rinsed with Phosphoric Acid-75 diluted to 40% phosphoric acid and heated to 100°F -0/+5°F.
- 2.06 Flush each drain with a minimum of 1 gal of cleaning solution, leave for 10 minutes, then rinse with a minimum of 4 gal of fresh water.
- 2.07 After rinsing, inspect and mechanically clean, by pressure washing, all grease traps in situ as required.

DESCRIPTION OF WORK REQUIRED:

REMARKS:

2.08	When cleaning is complete, pump the Grey water tank to as low a level as possible.	
3.00	<u>PREPARATIONS FOR BLACK WATER VACUUM COLLECTION SYSTEM FLUSH</u>	
	CAUTION	
	The Black Water system contains methane gas and residual human waste products. All work on this system shall be carried out with proper Personal Protective Equipment (PPE). As a minimum, workers shall wear rubber gloves, safety boots, face shields, disposable coveralls, and respirator equipment available for use as conditions dictate. Contact FMFCS Safety Dept. for instructions on proper procedures for the handling of methane gas and human waste products. Immediately clean up any leaks and spills of residue human waste products using chlorinated water to a concentration of 100 parts per million (ppm) or General Purpose Cleaner CGSB STD2-GP-107. When doubt exists on the use on cleaning products consult FMFCS Safety Office.	
	CAUTION	
	The Flushing solution contains Phosphoric acid. Personal Protective Equipment (PPE) is to be worn at any time while handling or using the acid. See ref B for list of required PPE for working with acids and caustics.	
3.01	During work on the Blackwater Collection System adjacent work areas and equipment shall be protected from contamination and exposure from methane gas and residual human waste products.	
3.02	Prior to commencing the Black Water Vacuum collection system flush, clean vacuum toilets and sea heads as follows:	
3.03	The CO's/SO's Washplace vacuum toilet; 1 Deck, FR 18 and the Sea Head vacuum toilet; 1 Deck, FR 19 are not included in the flushing of the Blackwater Collection system.	
3.04	Prior to the start of the Blackwater Collection System flush SS shall add one cup of flushing solution provided by the CONTRACTOR to the CO's/SO's Washplace vacuum toilet and the Sea Head Vacuum toilet and let stand for 10 min. Flush each toilet four times to remove any residual matter in the collection piping. (Ref. I. Sheet 1).	
3.05	Prior to commencement of the system flush SS shall flush each of the 30 toilets in TABLE 2, four times to remove any residual matter in the collection piping.	

DESCRIPTION OF WORK REQUIRED:

REMARKS:

TABLE 2 – VACUUM TOILETS		
COMPARTMENT	LOCATION	QTY
ADR Head	2 Deck, FR 46, P	1
CPO's Heads and WP	2 Deck, FR 39, S	2
Female CPO's Heads and WP	2 Deck, FR 39, S	2
Admin & Reception Area (Sick Bay Complex Bathroom)	2 Deck, FR 36, P	1
Officer's WP & Heads	2 Deck, FR 34, C/L	3
Female Officer's WP & Heads	2 Deck, FR 18, P	1
Crew's WP & Heads No. 1	2 Deck, FR 8, P	2
Crew's WP & Heads No. 2	3 Deck, FR 12, P	2
Crew's Lounge Heads	3 Deck, FR 20.5, P	2
C & PO's Lounge Heads	3 Deck, FR 34, P	3
PO's WP & Heads	3 Deck, FR 43, C/L	3
Female PO's WP & Heads	3 Deck, FR 43, C/L	1
Crew's WP No. 3 & Heads No. 3	3 Deck, FR 47, P	3
Crew's WP & Heads No. 4	3 Deck, FR 51, P	2
Crew's WP & Heads No. 5	3 Deck, FR 53.75, S	2

3.06	Clean the affected vacuum toilets using General Purpose Cleaner CGSB STD 2-GP-107M or FMFCS Safety Office approved alternative.
3.07	Drain the affected vacuum toilets of all liquid and isolate each vacuum toilet from the system.
3.08	Cover all drained toilets with six-mil plastic sheet and clearly mark <u>"OUT OF BOUNDS"</u> .
3.09	For the duration of the flush all vacuum toilets shall be locked shut and urinals shall be covered and clearly marked <u>"OUT OF BOUNDS"</u> , with SS assistance.
3.10	The SS single point of contact shall arrange for the following internal communication to be broadcast every half-hour: "All shipboard washroom facilities are Out of Bounds for the duration of the Blackwater Collection System Flush"

DESCRIPTION OF WORK REQUIRED:

REMARKS:

3.11	SS single point of contact shall provide the ashore location of alternate washrooms shall ensure the availability of the alternate washroom for the duration of the flush.	
3.12	SS single point of contact shall shut down the Blackwater system prior to commencement of flush.	
3.13	Isolate the Black Water collection system from the collection tank eductors in the sewage treatment compartment at valves 52, 54, 56. Disconnect the manifold between valves 52, 54, 56 to the Port and Stbd inlet flange connections within the sewage treatment compartment. See annex B illustration.	
3.13.1	Disconnect the pipe hangers holding the educator manifold.	
3.13.2	Cover all exposed piping with six-mil plastic and secure with tape.	
3.13.3	Close the gauge and pressure switch isolation valves 46, 47, 135 in the sewage treatment plant; 4 Deck, Fr 44, C/L; See illustration in annex B.	
4.00	<u>PART B - BLACK WATER FLUSH (PORT FORWARD ZONE)</u>	
4.01	Prepare Part B Port Forward Zone piping for the flush in accordance with the following instructions and drawings;	
4.01.1	Open valve 24 located in the AAMR; 4 Deck, FR 42, Port; Ref. I. Sheet 3.	
4.01.2	Open valve 20 located in the FAMR; 4 Deck, FR 21, Port; Ref. I. Sheet 3.	
4.01.3	Open valve 35 located in Port Passageway; 3 Deck, FR 12, Port; Ref. I. Sheet 2.	
4.01.4	Close valve 25 to the Grey Water Tank located in the FER; 4 Deck, FR 26, Port; Ref. I. Sheet 3.	
4.01.5	Disconnect affected toilets at the rubber elbows. Remove the urinal interface valves and connect the flushing headers into the collection piping.	
4.01.6	Cover all exposed piping with 6-mil plastic and secure with tape.	
4.01.7	Disconnect the sickbay vacuum interface valve, item 14 in the stores office; 3 Deck, FR 36, Port; Ref. I. Sheet 2. Connect the flushing header into the collection piping. Store the sickbay vacuum, interface valve, item 14, clear of the work area and protect from damage.	

DESCRIPTION OF WORK REQUIRED:

REMARKS:

4.01.8	Cover all exposed piping with 6-mil plastic and secure with tape.	
4.01.9	Tie in for the Port Fwd flush return lines at the Port manifold flange connection, See illustration in annex B.	
4.01.10	The CONTRACTOR shall transport the eductor manifold to the Contractor's shop and clean as piping in accordance with "Black Water System Flushing Instructions" para 8.0.	
4.02	Flush Part B in accordance with "Black Water System Flushing Instructions" para 8.0	
5.00	<u>PART C - BLACK WATER FLUSH (FWD STBD and AFT)</u>	
5.01	Prepare the Part C Forward Starboard and Aft piping for the flush in accordance with the following drawings and instructions;	
5.01.1	Open valve 159 in Crew's Laundry; 4 Deck, FR 43, Port; Ref. I. Sheet 3.	
5.01.2	Open valve 31 in AAMR; 4 Deck, FR 43, Stbd; Ref. I. Sheet 3.	
5.01.3	Open valve 160 in the Sewage Treatment Compartment; 4 Deck, FR 43, Stbd; Ref. I. Sheet 3.	
5.01.4	Open two valves 906, 907 in the CPO's & P1's WP & Heads; 2 Deck, FR 39/40, Stbd (the two valves are adjacent to the washer and dryer at an elevation of 4 feet from the deck) Ref. I. Sheet 2.	
5.01.5	Close valve 28 to Greywater tank in the Sewage Treatment Compartment; 5 Deck, FR 25, Stbd; Ref. I. Sheet 3.	
5.01.6	Close valve 116 suction to Greywater tank in the Sewage Treatment Compartment; 5 Deck, FR 43, Stbd; Ref. I. Sheet 3.	
5.01.7	Close valve 117 to Greywater tank in the Sewage Treatment Compartment; 5 Deck, FR 43, Stbd; Ref. I. Sheet 3.	
5.01.8	Tie in for Stbd Fwd and Aft flush return lines at the manifold flange IAW illustration in annex B.	
5.01.9	Disconnect affected toilets listed in Table 1 at the rubber elbows. Remove the urinal interface valves and connect the flushing headers into the collection piping.	
5.01.10	Cover all exposed piping with 6-mil plastic and secure with tape.	
5.02	Flush Part C in accordance with "Black Water System Flushing Instructions" para 8.0	

DESCRIPTION OF WORK REQUIRED:

REMARKS:

5.03	On completion of all flushing required for Part B and Part C:	
5.03.1	Return the manifold to the ship and reinstall using new gaskets;	
5.03.2	Reconnect the pipe hangers;	
5.03.3	Reinstall the sickbay vacuum interface valve 14 in the stores office; 3 Deck, FR 36, Port; Ref. I. Sheet 2; using new gaskets;	
5.03.4	Reinstall all the urinal interface valves using new gaskets and reconnect all the vacuum toilets; and	
5.03.5	Remove plastic covering.	
6.00	<u>PART D - CLEANING OF BLACK AND GREY WATER TANKS</u>	
6.01	Upon completion of the above flushing procedures the Black Water tanks (Sewage Treatment Tank and Quiet Medium Tank) shall be cleaned and pumped IAW the appropriate sections of Ref. F.	
6.02	All Grey Water tanks shall be rinsed and pumped IAW the appropriate sections of Ref. F.	
7.00	<u>PART E - PRESERVATION OF VALVES, PUMPS AND SEWAGE TREATMENT EQUIPMENT</u>	
7.01	To preserve the remainder of the system the following work shall be carried out:	
7.02	Clean seawater intake strainer for the sewage treatment plant IAW Ref. A, figure 4-4.;	
7.03	Open, inspect and clean the book cells of the sewage treatment plant IAW Ref. A, figure 4-17;	
7.04	Check oil levels in Macerator Pumps. If required replace oil IAW Ref. A, figure 4-5. Oil shall conform to Mil-L-2104C; and	
7.05	Paint any disturbed areas IAW Ref. D.	

DESCRIPTION OF WORK REQUIRED:

REMARKS:

8.00	<u>BLACK WATER SYSTEM FLUSHING INSTRUCTIONS</u>	
All personnel involved in flush are to follow additional requirements as provided in REF G.		
8.01	<p>Prior to the Blackwater flush each section shall be pressure tested with fresh water. Test pressure shall be 50 psi.</p> <p>NOTE: Blackwater Collection System working and test pressures are:</p> <ul style="list-style-type: none">• Working pressure 2.5 BAR (36.26 PSI)• Test pressure – 3.4 BAR (49.31 PSI)• Maximum Temperature – 57 C	
8.02	Inspect piping for leaks. Repair any section of piping found to be leaking using temporary repair methods.	
8.03	Immediately clean up the area of leaks and spills of residual human waste products using chlorinated water to a concentration of 100 ppm or general purpose cleaner CGSB STD 2-GP-107.	
8.04	Deanco Phosphoric Acid-75 is a highly caustic chemical consisting of 60-80% phosphoric acid. Handling of Deanco Phosphoric Acid-75 shall be IAW MSDS attached.	
8.05	Flushing solution consists of Phosphoric Acid-75 diluted to 40% phosphoric acid and heated to 100°F –0/+5°F. Introduce into the Blackwater system collection piping and circulate, with a change of direction of the flushing solution every two hours. After the change in direction let the solution lay stagnate for 15 mins. Continue for 8 hours maximum.	
8.06	During the flushing procedure monitor system to ensure no defects/leaks occur. Repair as required.	
8.07	After each circuit flush and prior to the final hook up examine adjacent openings for corrosion, defects and prove the adjacent pipe clear.	
8.08	On completion of each flush remove all flushing solution. Flush the Blackwater system until all traces of the flushing solution are removed. CONTRACTOR shall record.	R
8.09	A Hazardous Material Disposal Company shall be contracted to properly dispose of all flushing solution used during flush.	

DESCRIPTION OF WORK REQUIRED:

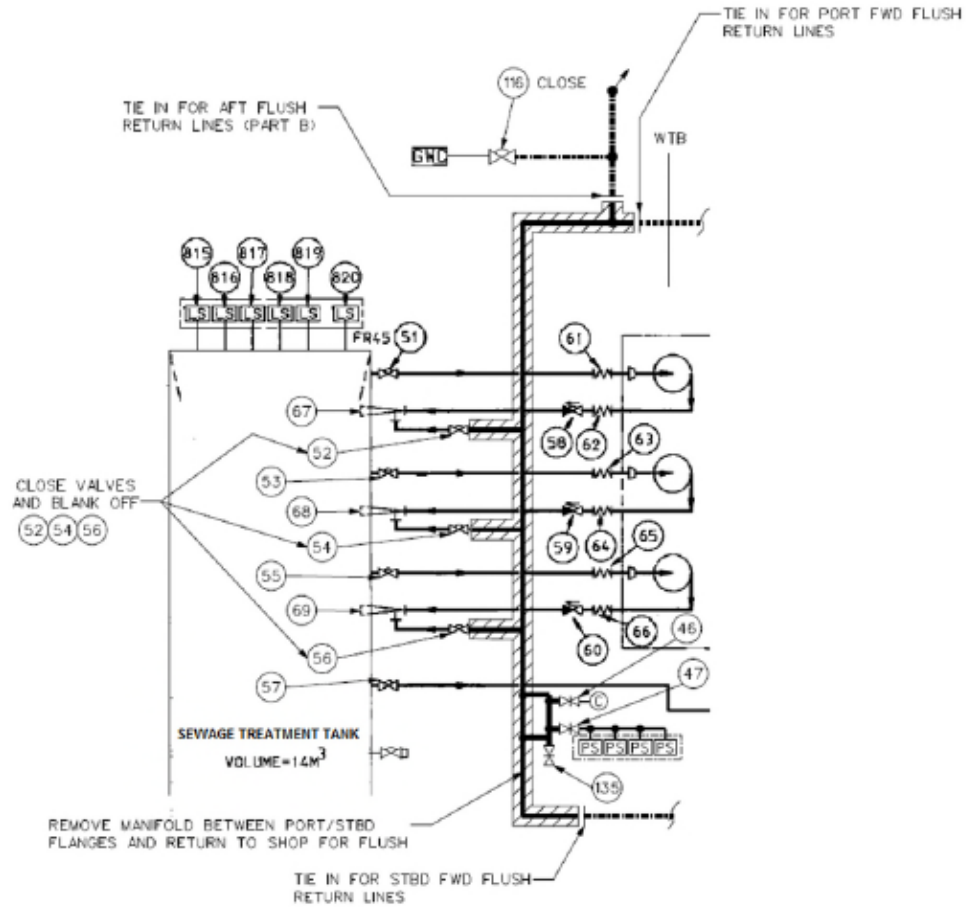
REMARKS:

9.00	<u>INSPECTIONS AND TRIALS</u>	R
9.01	Prior to start of flush and upon completion inspect piping internally at three locations. CONTRACTOR with SS in attendance shall accept/reject and record the locations and the results of the flush on a Contractor form including: location, description, date, name and signature.	
9.02	Upon completion of flush, the Black and Grey water system is to remain isolated and <u>OUT OF BOUNDS</u> for the DWP.	
10.00	<u>COMPLETION ACTION</u>	
10.01	CONTRACTOR is to provide a copy of the flush report for circuit flushed, duration, and cleanliness of circuit for inclusion in the job folder.	

ANNEX A
MSDS

ANNEX B

Mech/Eng Generic JI 16/011



C. Solicitation Document Amendments

As per Response 2:

Insert the following paragraph Under Part 2 , 2.1 Standard Instructions, please insert:

The 2003 (2022-03-29) Standard Instructions - Goods or Services - Competitive Requirements, are incorporated by reference into and form part of the bid solicitation.

As per Response 3:

Annex “E” Section 2.P. delete below

~~—P. Amendment to the Watercraft Exclusion to extend to incidental repair operations on board watercraft.~~

Insert the following paragraph under the Annex “E” Section 2.P.

P. Amendment to the Watercraft Exclusion to extend to incidental repair operations on board watercraft. This endorsement is only necessary if the Contractor will be doing work on a watercraft.

As per Response 4:

delete below paragraph under 4.1.2.1 Technical Mandatory Criteria , Line A

~~Bidders shall provide four, (4), detailed examples of the firms experience in providing similar Blackwater System Flushing Services onboard Ships, Submarines, or Auxiliary vessels, in the last four (4) years, of similar size, scope, and complexity.~~

Insert the following paragraph under 4.1.2.1 Line A. “Technical Mandatory Criteria”

Bidders shall provide four,(4),detailed examples of its or Project Management teams experience and skill set in providing similar black/grey water System Flushing Services onboard Ships, Submarines, or Auxiliary vessels, in the last ten (10) years, of similar size, scope, and complexity.

All terms and conditions remain the same.