

Parks Canada

Strategic Asset  
Management,  
Western and Northern  
Region

Parcs Canada

Gestion Stratégique  
des Biens,  
Région de l'Ouest et  
du Nord

Canada

# GOVERNMENT OF CANADA

## WASKESIU STORM WATER DRAINAGE PHASE II

### DRAWING INDEX

01 KEY PLAN  
02 LOCATION PLAN  
03 PLAN & PROFILE  
04 PLAN & PROFILE  
05 EXISTING SITE PLAN  
06 PROPOSED SITE PLAN  
07 GRADING PLAN

08 STORM WATER INTAKE MANHOLE  
SECTIONS & DETAILS  
09 INTAKE MANHOLE KIOSK  
SECTIONS & DETAILS  
10 MISCELLANEOUS DETAILS  
11 ELECTRICAL SITE PLAN & DETAILS  
12 ELECTRICAL DETAILS





GRID NORTH  
UNIVERSAL TRANSVERSE MERCATOR  
NAD83 ZONE 13

ASSOCIATION OF PROFESSIONAL ENGINEERS  
& GEOSCIENTISTS OF SASKATCHEWAN  
CERTIFICATE OF AUTHORIZATION

BCL ENGINEERING LTD.

NUMBER C312

PERMISSION TO CONSULT HELD BY:  
DISCIPLINE SASK. REG. No. SIGNATURE  
MUNICIPAL 16532

NOTES

1. LOCATION OF ALL EXISTING UTILITIES SHOWN FOR INFORMATION PURPOSES ONLY; CONTRACTOR RESPONSIBLE FOR LOCATING AND PROTECTING ALL EXISTING UTILITIES FROM DAMAGE.
2. ALL STORM FORCE MAINS TO BE INSULATED UNLESS OTHERWISE NOTED.

1	2022-09-28	ISSUED FOR ADDENDUM	K.M.N.	T.J.P.L.
0	2022-06-27	ISSUED FOR 75% REVIEW	T.J.P.L.	T.J.P.L.
No.	Date	Description	Drawn by Dessiné par	Approved Approuvé

Revision / Revision

A  
B

Detail number  
Sheet number

A Numéro de detail  
B Numéro de la feuille

Linear dimensions  
in millimetres

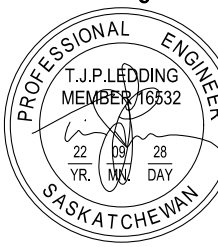
Dimensions linéaires  
en millimètres

Nom de l'expert-conseil



**BCL**  
ENGINEERING LTD.

Eng. Stamp  
Sceau de l'ingénieur



Parks Canada  
Strategic Asset  
Management,  
Western and Northern  
Region

Parks Canada  
Gestion Stratégique  
des Biens,  
Région de l'Ouest et  
du Nord

Canada

Consultant's Name

BCL ENGINEERING LTD.

Project title/Titre du projet

WASKESIU STORM  
WATER DRAINAGE  
PHASE II

Drawing title/Titre du dessin

KEY PLAN

Surveyed by/Arpenté par G.A.BULLEE	Drawn by/Dessiné par K.M.NIEDZIELSKI	Date 2022-09-28
Designed by/Concept par T.J.P.LEDDING	Reviewed by/Revisé par T.J.MAGUS	Scale/Echelle 1:7500

Client Acceptance/Acceptation du client	Approved by/Approuvé par
Date	Date

Project No./N° du projet 013.37	Asset No./N° du bien --	Sheet No./ N° de la feuille 01 of 12
------------------------------------	----------------------------	--

Drawing Set No./N° de série du dessin







GRID NORTH  
UNIVERSAL TRANSVERSE MERCATOR  
NAD83 ZONE 13

ASSOCIATION OF PROFESSIONAL ENGINEERS  
& GEOSCIENTISTS OF SASKATCHEWAN  
CERTIFICATE OF AUTHORIZATION

BCL ENGINEERING LTD.

NUMBER C312  
PERMISSION TO CONSULT HELD BY:  
DISCIPLINE SASK. REG. No. SIGNATURE  
MUNICIPAL 16532

NOTES

1. LOCATION OF ALL EXISTING UTILITIES SHOWN FOR INFORMATION PURPOSES ONLY; CONTRACTOR RESPONSIBLE FOR LOCATING AND PROTECTING ALL EXISTING UTILITIES FROM DAMAGE.
2. ALL STORM FORCE MAINS TO BE INSULATED UNLESS OTHERWISE NOTED.

1	2022-09-28	ISSUED FOR ADDENDUM	K.M.N.	T.J.P.L.
0	2022-06-27	ISSUED FOR 75% REVIEW	T.J.P.L.	T.J.P.L.
No.	Date	Description	Drawn by Dessiné par	Approved Approuvé

Revision / Révision

A  
B

Detail number  
Sheet number

A Numéro de détail  
B Numéro de la feuille

Linear dimensions  
in millimetres

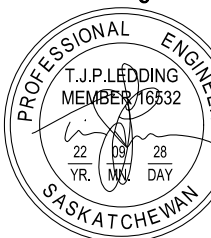
Dimensions linéaires  
en millimètres

Nom de l'expert-conseil



**BCL**  
ENGINEERING LTD.

Eng. Stamp  
Sceau de l'ingénieur



Parks Canada  
Strategic Asset  
Management,  
Western and Northern  
Region

Parcs Canada  
Gestion Stratégique  
des Biens,  
Région de l'Ouest et  
du Nord

Canada

Consultant's Name

BCL ENGINEERING LTD.

Project title/Titre du projet

WASKESIU STORM  
WATER DRAINAGE  
PHASE II

Drawing title/Titre du dessin

LOCATION PLAN

Surveyed by/Arpenté par G.A.BULLEE	Drawn by/Dessiné par K.M.NIEDZIELSKI	Date 2022-09-28
Designed by/Concept par T.J.P.LEDDING	Reviewed by/Revisé par T.J.MAGUS	Scale/Echelle 1:750

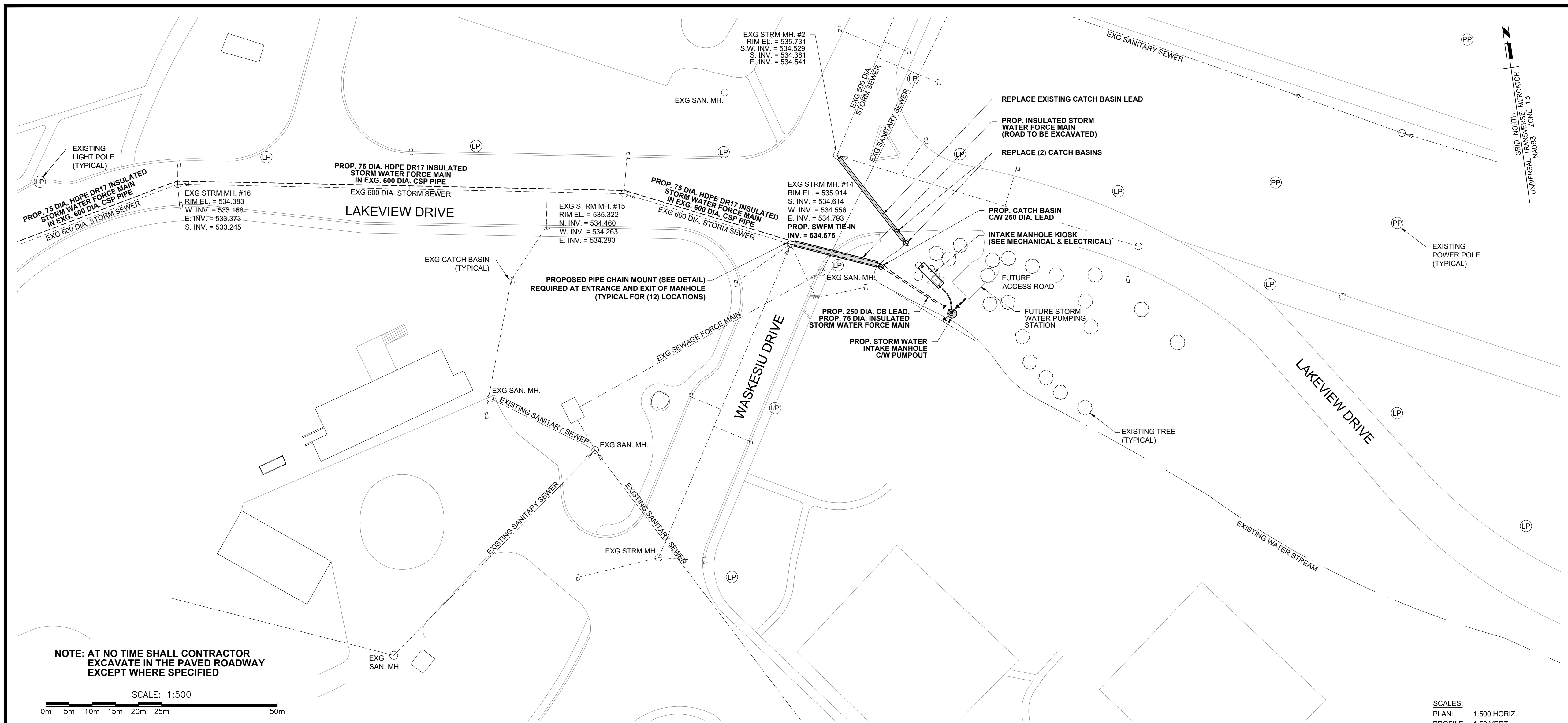
Client Acceptance/Acceptation du client	Approved by/Approuvé par
Date	Date

Project No./N° du projet 013.37	Asset No./N° du bien --	Sheet No./N° de la feuille 02 of 12
------------------------------------	----------------------------	--

Drawing Set No./N° de série du dessin







ASSOCIATION OF PROFESSIONAL ENGINEERS  
& GEOSCIENTISTS OF SASKATCHEWAN  
CERTIFICATE OF AUTHORIZATION

BCL ENGINEERING LTD.

NUMBER C312

PERMISSION TO CONSULT HELD BY:  
DISCIPLINE SASK. REG. No. SIGNATURE  
MUNICIPAL 16532

#### NOTES

1. LOCATION OF ALL EXISTING UTILITIES SHOWN FOR INFORMATION PURPOSES ONLY; CONTRACTOR RESPONSIBLE FOR LOCATING AND PROTECTING ALL EXISTING UTILITIES FROM DAMAGE.
2. ALL STORM FORCE MAINS TO BE INSULATED UNLESS OTHERWISE NOTED.

1	2022-09-28	ISSUED FOR ADDENDUM	K.M.N.	T.J.P.L.
0	2022-06-27	ISSUED FOR 75% REVIEW	T.J.P.L.	T.J.P.L.
No.	Date	Description	Drawn by Dessiné par	Approved Approuvé

Revision / Revision

A  
B

Detail number  
Sheet number

A Numéro de détail  
B Numéro de la feuille

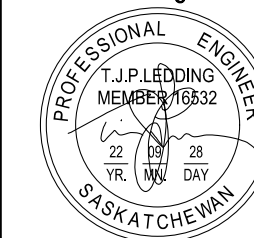
Linear dimensions  
in millimetres

Dimensions linéaires  
en millimètres

Nom de l'expert-conseil

**BCL**  
ENGINEERING LTD.

Eng. Stamp  
Sceau de l'ingénieur



Parks Canada

Parcs Canada

Strategic Asset  
Management,  
Western and Northern  
Region

Gestion Stratégique  
des Biens,  
Région de l'Ouest et  
du Nord

# Canada

Consultant's Name

BCL ENGINEERING LTD.

Project title/Titre du projet

## WASKESIU STORM WATER DRAINAGE PHASE II

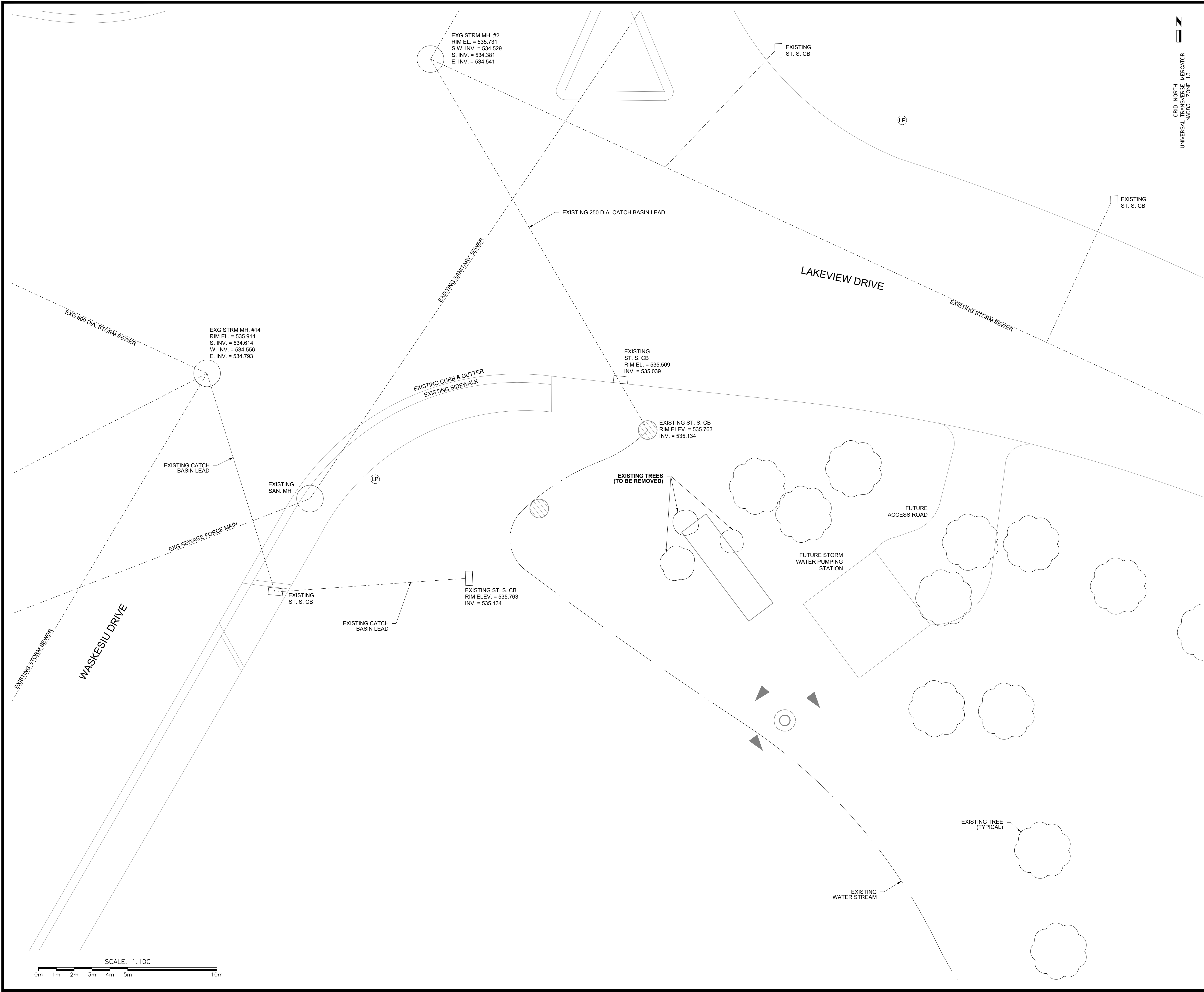
Drawing title/Titre du dessin

### STORM WATER FORCE MAIN PLAN & PROFILE

Surveyed by/Arpenté par G.A.BULLEE	Drawn by/Dessiné par K.M.NIEDZIELSKI	Date 2022-09-28
Designed by/Conçue par T.J.P.LEDDING	Reviewed by/Revisé par T.J.MAGUS	Scale/Echelle 1:500

Client Acceptance/Acceptation du client	Approved by/Approuvé par
Date	Date

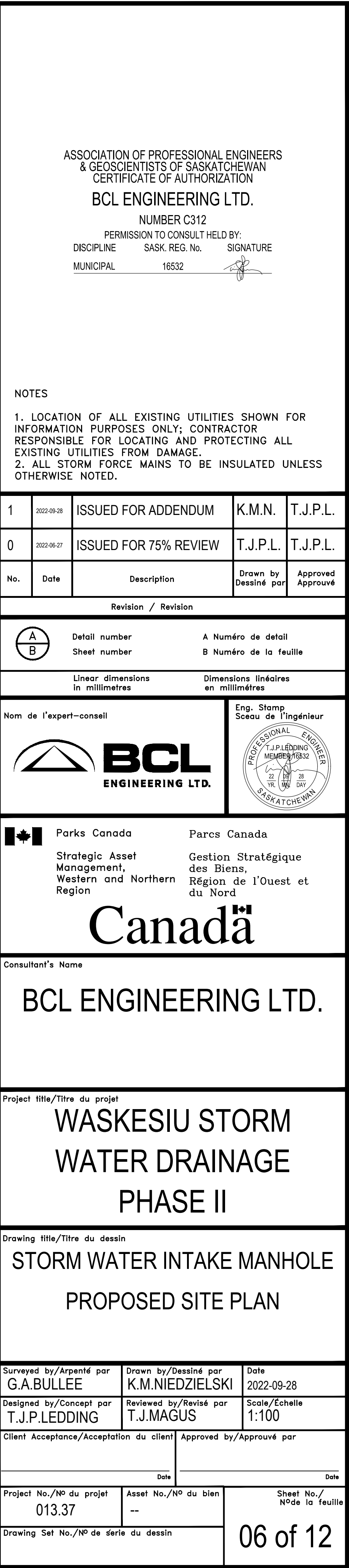
Project No./N° du projet 013.37	Asset No./N° du bien --	Sheet No./ N° de la feuille 04 of 12
------------------------------------	----------------------------	--



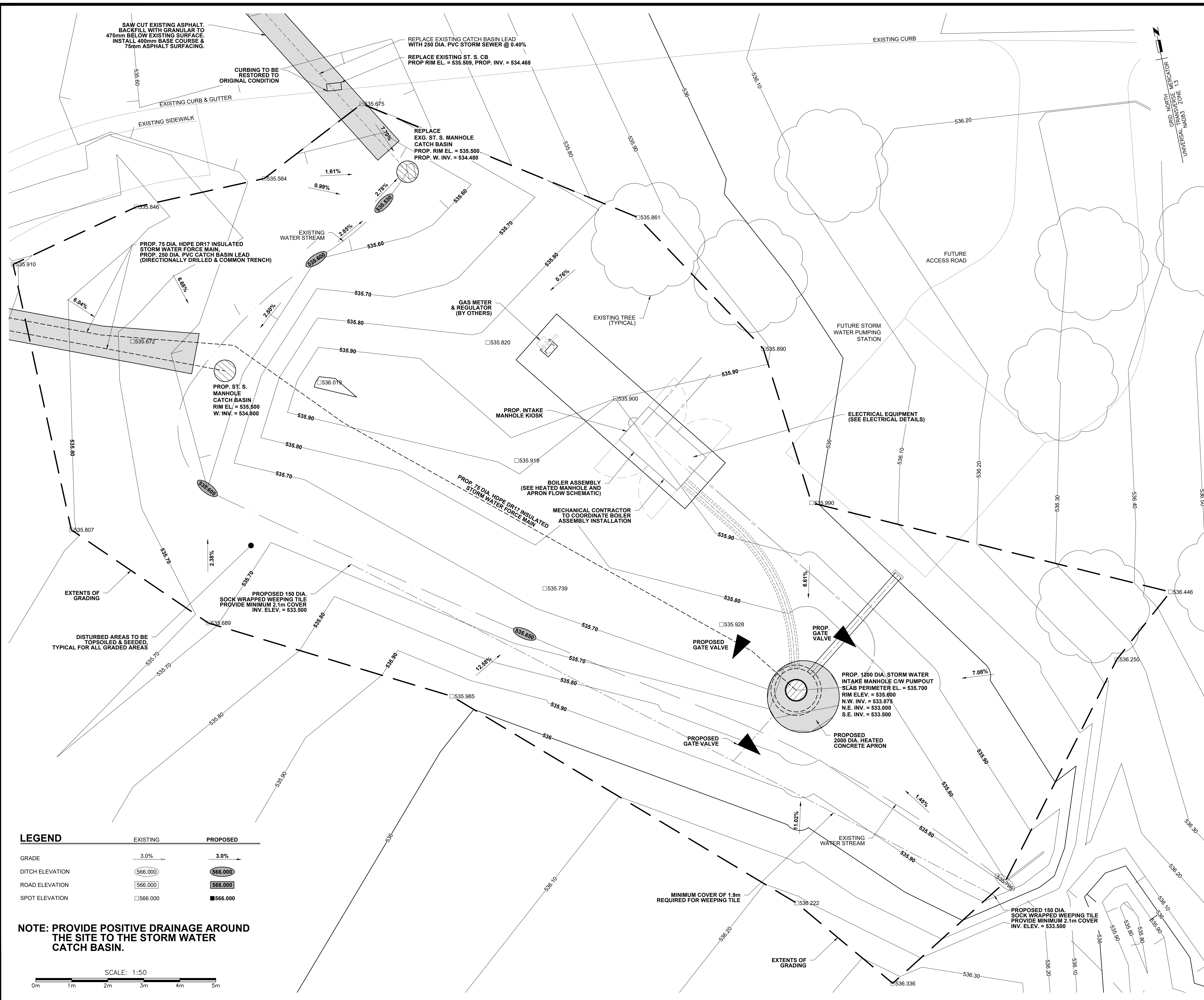
ASSOCIATION OF PROFESSIONAL ENGINEERS  
& GEOSCIENTISTS OF SASKATCHEWAN  
CERTIFICATE OF AUTHORIZATION  
**BCL ENGINEERING LTD.**  
NUMBER C312  
PERMISSION TO CONSULT HELD BY:  
DISCIPLINE    SASK. REG. No.    SIGNATURE  
MUNICIPAL    16532

NOTES  
1. LOCATION OF ALL EXISTING UTILITIES SHOWN FOR INFORMATION PURPOSES ONLY; CONTRACTOR RESPONSIBLE FOR LOCATING AND PROTECTING ALL EXISTING UTILITIES FROM DAMAGE.  
2. ALL STORM FORCE MAINS TO BE INSULATED UNLESS OTHERWISE NOTED.

1	2022-09-28	ISSUED FOR ADDENDUM	K.M.N.	T.J.P.L.
0	2022-06-27	ISSUED FOR 75% REVIEW	T.J.P.L.	T.J.P.L.
No.	Date	Description	Drawn by Dessiné par	Approved Approuvé
Revision / Revision				
<div><div>A</div><div>B</div></div>		Detail number Sheet number	A Numéro de détail B Numéro de la feuille	
Linear dimensions in millimetres		Dimensions linéaires en millimètres		
Nom de l'expert-conseil 			Eng. Stamp Sceau de l'ingénieur 	
Parks Canada Strategic Asset Management, Western and Northern Region		Parcs Canada Gestion Stratégique des Biens, Région de l'Ouest et du Nord		
<div>Canada</div>				
Consultant's Name <b>BCL ENGINEERING LTD.</b>				
Project title/Titre du projet <b>WASKESIU STORM WATER DRAINAGE PHASE II</b>				
Drawing title/Titre du dessin <b>STORM WATER INTAKE MANHOLE EXISTING SITE PLAN</b>				
Surveyed by/Arpenté par <b>G.A.BULLEE</b>		Drawn by/Dessiné par <b>K.M.NIEDZIELSKI</b>		Date 2022-09-28
Designed by/Concept par <b>T.J.P.LEDDING</b>		Reviewed by/Revisé par <b>T.J.MAGUS</b>		Scale/Échelle 1:100
Client Acceptance/Acceptation du client			Approved by/Approuvé par	
Date			Date	
Project No./Nº du projet 013.37		Asset No./Nº du bien --		Sheet No./Nº de la feuille <b>05 of 12</b>
Drawing Set No./Nº de série du dessin				







ASSOCIATION OF PROFESSIONAL ENGINEERS  
& GEOSCIENTISTS OF SASKATCHEWAN  
CERTIFICATE OF AUTHORIZATION

**BCL ENGINEERING LTD.**

NUMBER C312

PERMISSION TO CONSULT HELD BY:

DISCIPLINE	SASK. REG. No.	SIGNATURE
MUNICIPAL	16532	

NOTES

1. LOCATION OF ALL EXISTING UTILITIES SHOWN FOR INFORMATION PURPOSES ONLY; CONTRACTOR RESPONSIBLE FOR LOCATING AND PROTECTING ALL EXISTING UTILITIES FROM DAMAGE.

2. ALL STORM FORCE MAINS TO BE INSULATED UNLESS OTHERWISE NOTED.

1	2022-09-28	ISSUED FOR ADDENDUM	K.M.N.	T.J.P.L.
0	2022-08-27	ISSUED FOR 75% REVIEW	T.J.P.L.	T.J.P.L.

No.	Date	Description	Drawn by Dessiné par	Approved Approuvé
Revision / Révision				
<div><div>A</div><div>B</div></div>	Detail number Sheet number	A Numéro de détail B Numéro de la feuille		
Linear dimensions in millimetres		Dimensions linéaires en millimètres		

**BCL**  
ENGINEERING LTD.

Eng. Stamp  
Sceau de l'ingénieur

Parks Canada  
Strategic Asset  
Management,  
Western and Northern  
Region

Parcs Canada  
Gestion Stratégique  
des Biens,  
Région de l'Ouest et  
du Nord

Consultant's Name

**BCL ENGINEERING LTD.**

Project title/Titre du projet

**WASKESIU STORM  
WATER DRAINAGE  
PHASE II**

Drawing title/Titre du dessin

**STORM WATER INTAKE MANHOLE  
GRADING PLAN**

Surveyed by/Arpenté par <b>G.A.BULLEE</b>	Drawn by/Dessiné par <b>K.M.NIEDZIELSKI</b>	Date <b>2022-09-28</b>
Designed by/Concept par <b>T.J.P.LEDDING</b>	Reviewed by/Revisé par <b>T.J.MAGUS</b>	Scale/Echelle <b>1:50</b>

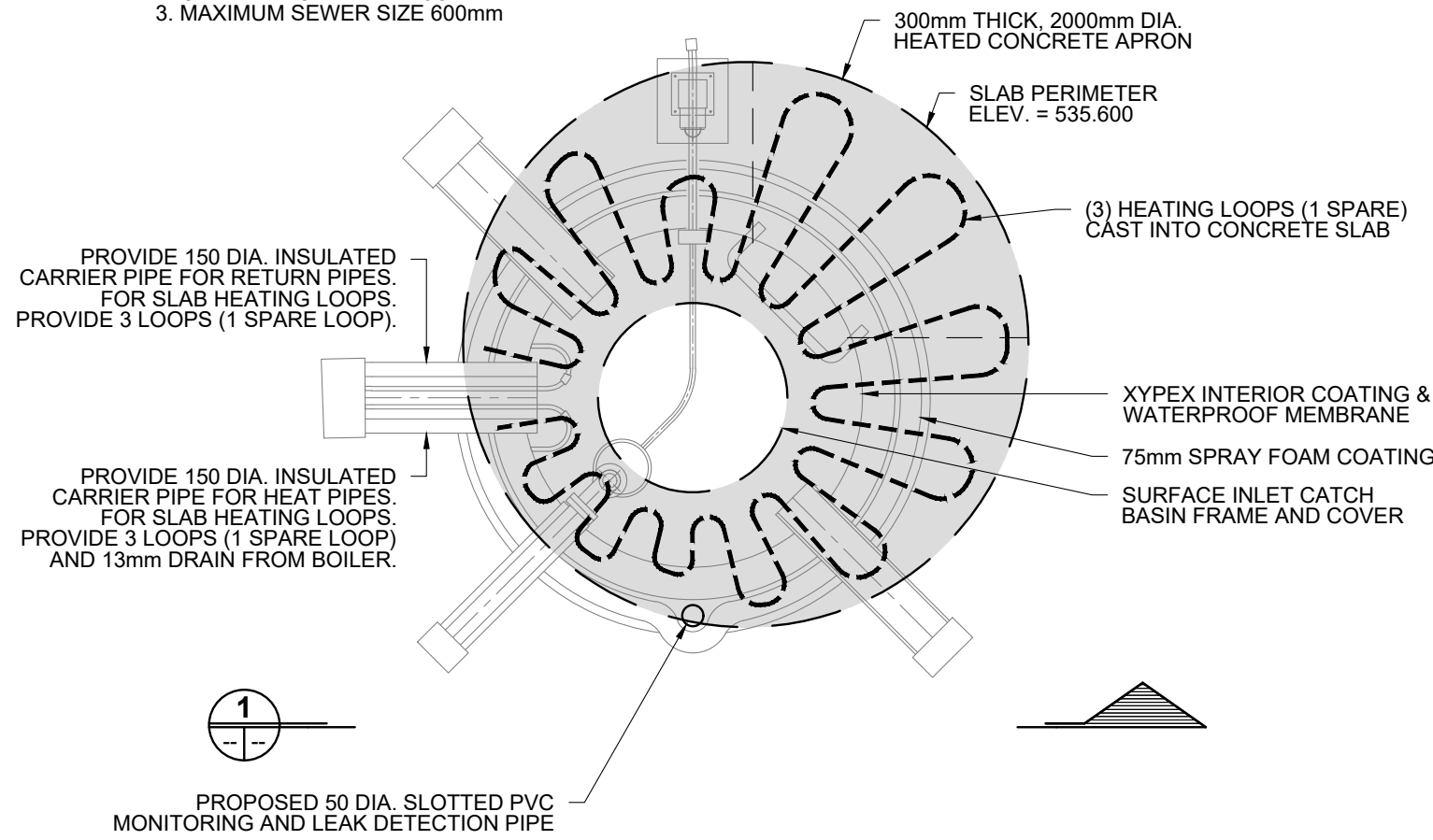
Client Acceptance/Acceptation du client	Approved by/Approuvé par
Date	Date

Project No./No du projet <b>013.37</b>	Asset No./No du bien <b>--</b>	Sheet No./ N° de la feuille <b>07 of 12</b>
Drawing Set No./N° de série du dessin		

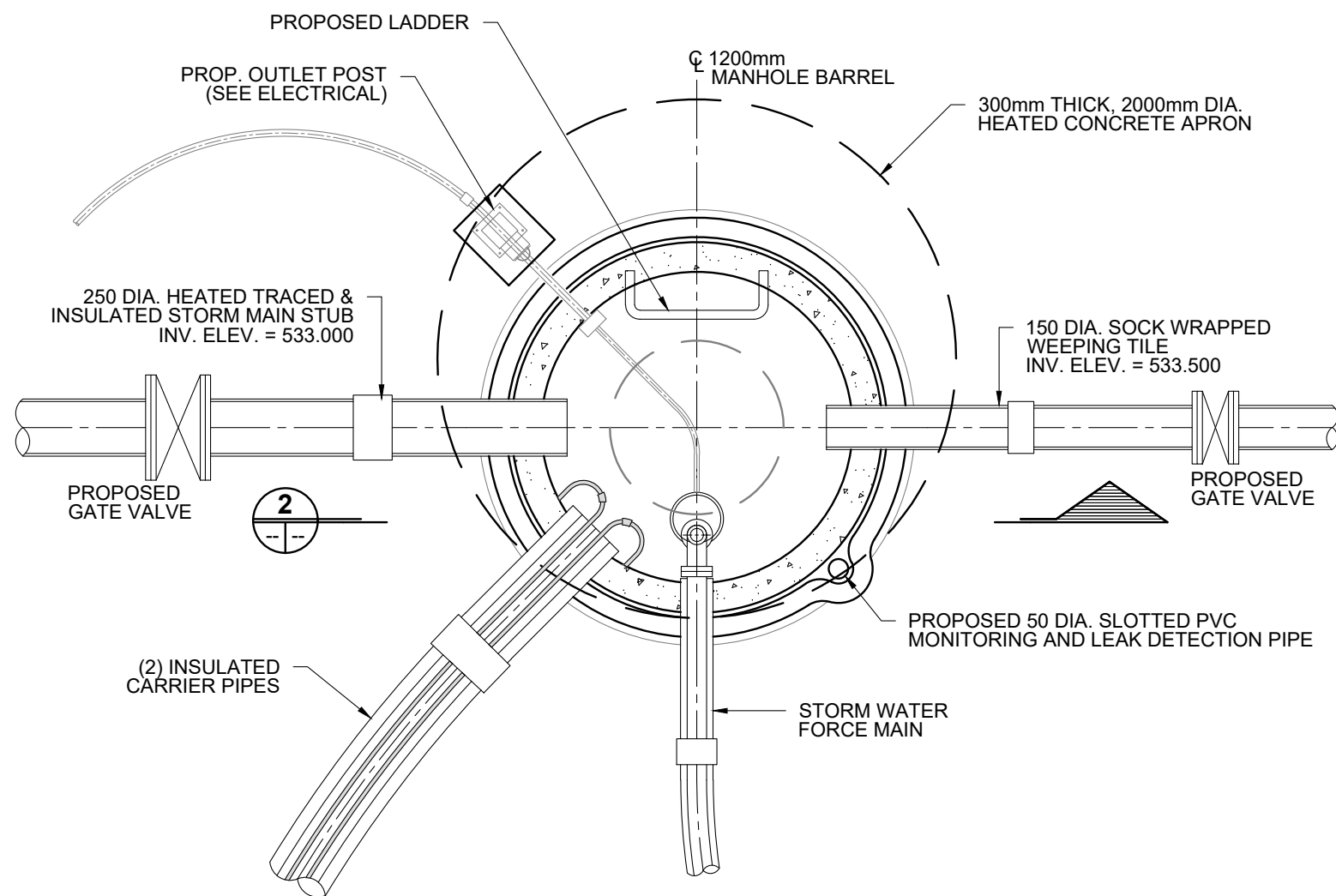


NOTES:

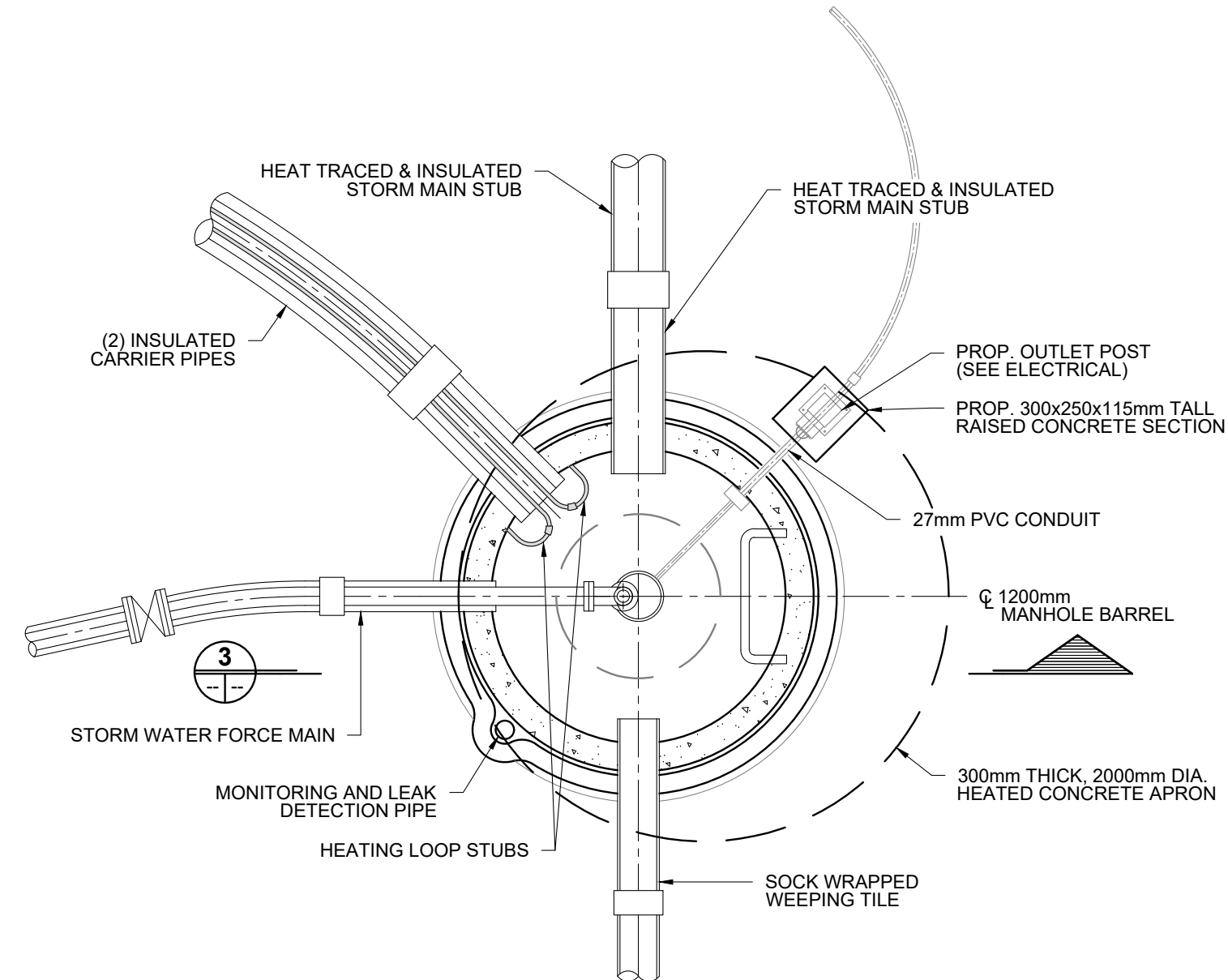
1. ALL PIPE STUBS TO BE INSTALLED AT FACTORY.
2. MANHOLE TOP TO BE SET AS DIRECTED BY ENGINEER.
3. CEMENT MORTAR ALL JOINTS.
4. MAXIMUM SEWER SIZE 600mm



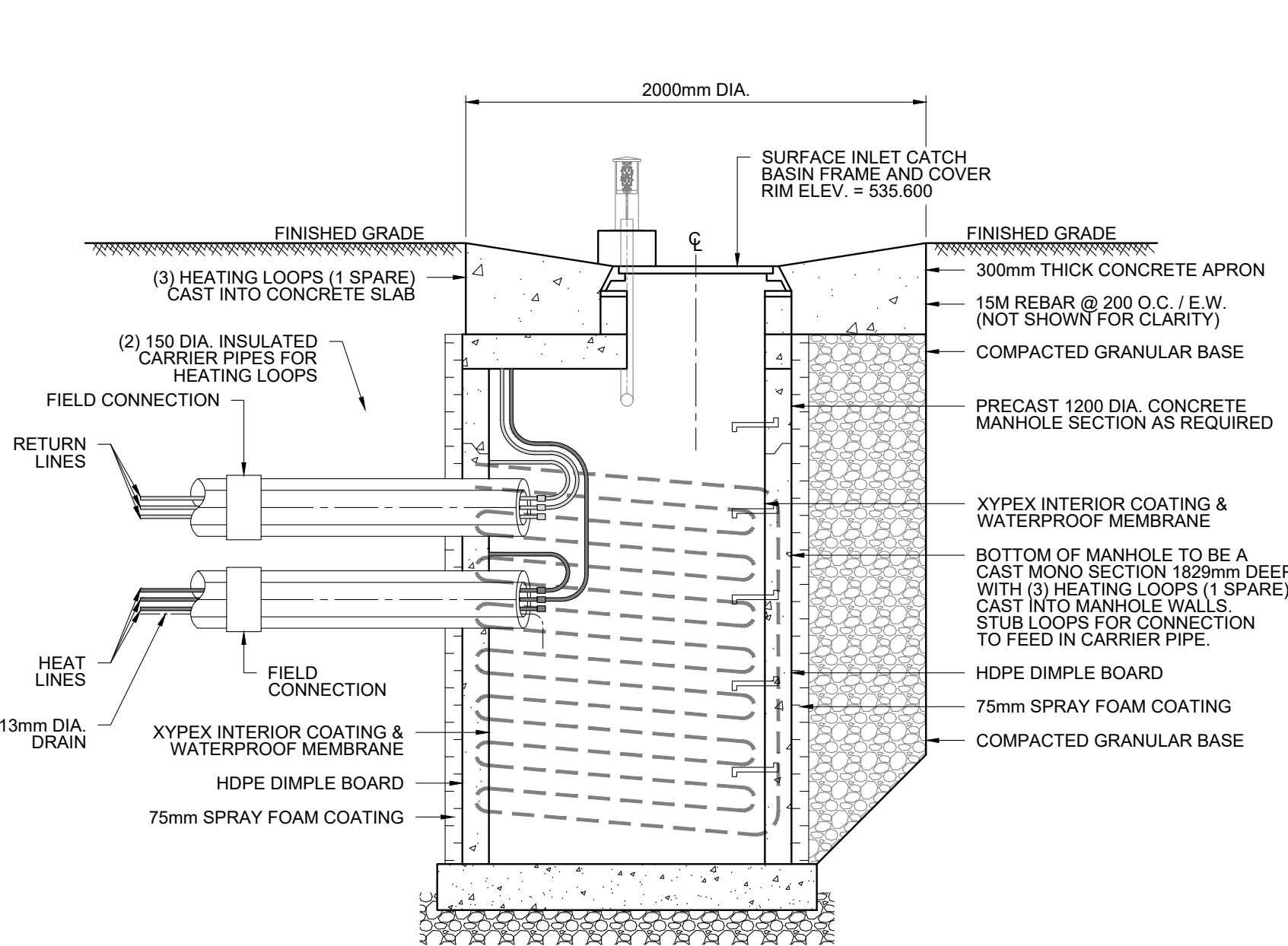
**STORM WATER INTAKE  
MANHOLE C/W PUMPOUT**  
SCALE 1:25



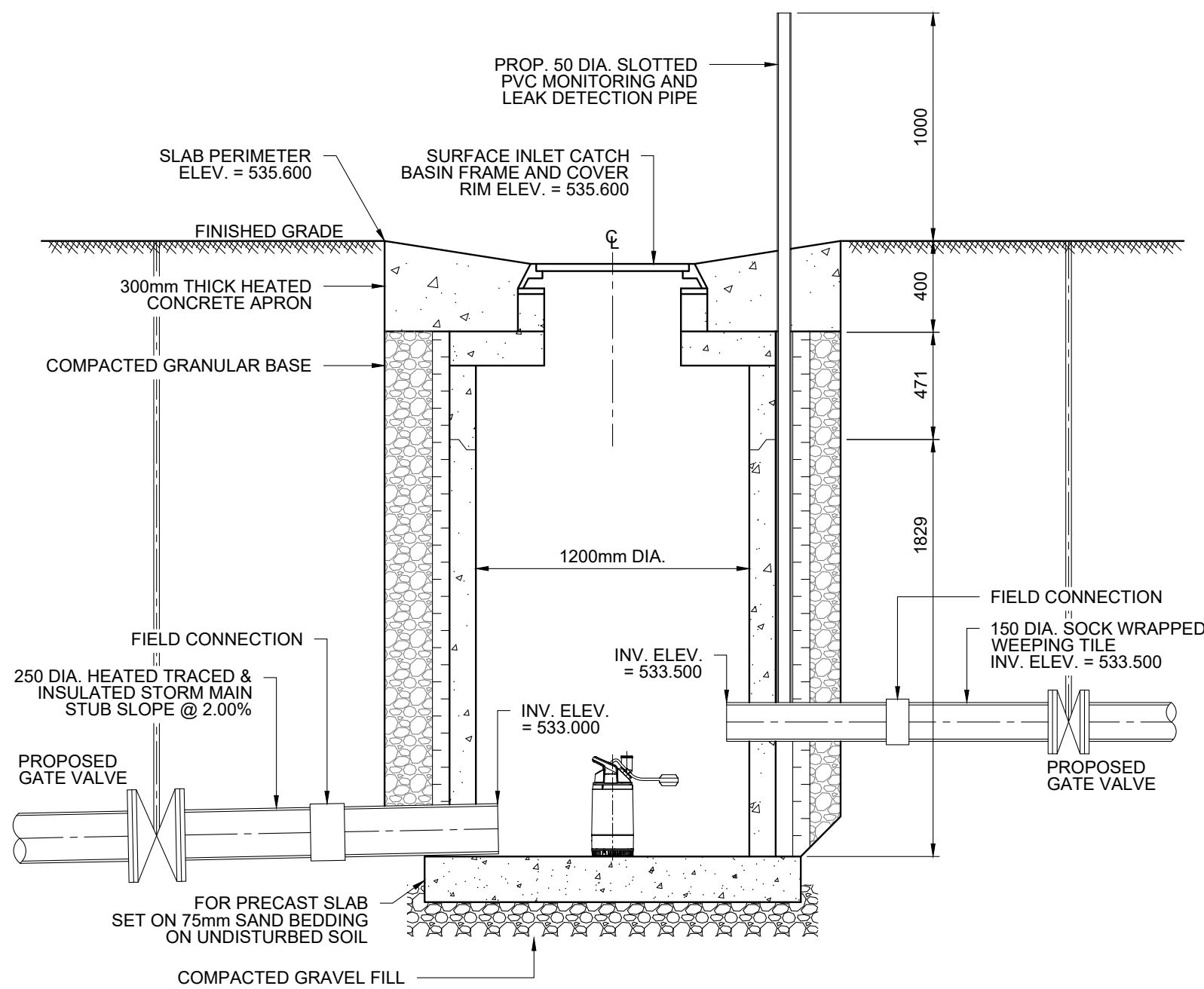
**STORM WATER INTAKE  
MANHOLE C/W PUMPOUT**  
SCALE 1:25



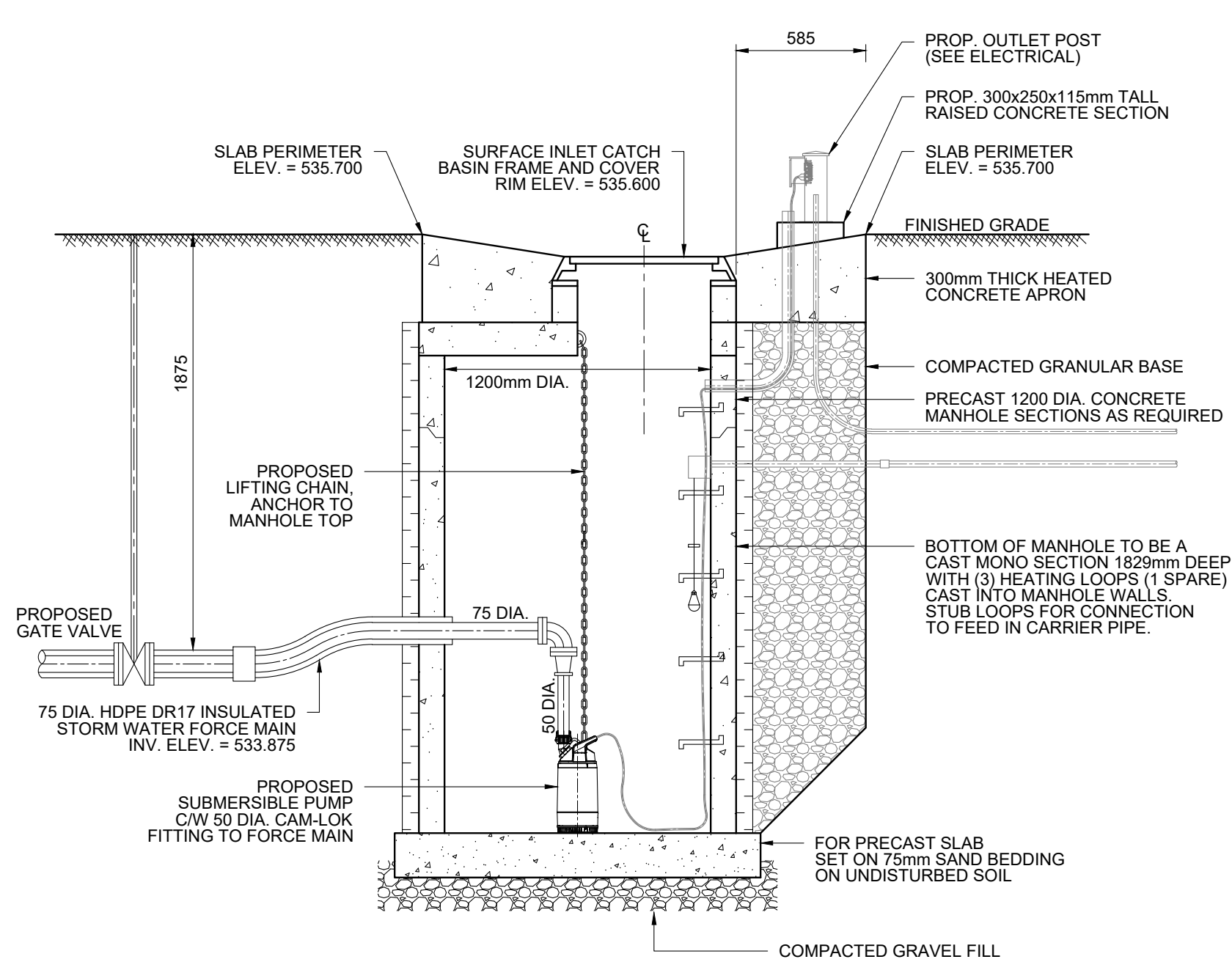
**STORM WATER INTAKE  
MANHOLE C/W PUMPOUT**  
SCALE 1:25



**SECTION 1**  
SCALE 1:25



**SECTION 2**  
SCALE 1:25



**SECTION 3**  
SCALE 1:25

ASSOCIATION OF PROFESSIONAL ENGINEERS  
& GEOSCIENTISTS OF SASKATCHEWAN  
CERTIFICATE OF AUTHORIZATION

BCL ENGINEERING LTD.

NUMBER C312  
PERMISSION TO CONSULT HELD BY:  
DISCIPLINE SASK. REG. No. SIGNATURE  
MUNICIPAL 16532

NOTES

1. LOCATION OF ALL EXISTING UTILITIES SHOWN FOR INFORMATION PURPOSES ONLY; CONTRACTOR RESPONSIBLE FOR LOCATING AND PROTECTING ALL EXISTING UTILITIES FROM DAMAGE.
2. ALL STORM FORCE MAINS TO BE INSULATED UNLESS OTHERWISE NOTED.

1	2022-09-28	ISSUED FOR ADDENDUM	K.M.N.	T.J.P.L.
0	2022-08-27	ISSUED FOR 75% REVIEW	T.J.P.L.	T.J.P.L.
No.	Date	Description	Drawn by Dessiné par	Approved Approuvé

Revision / Révision				
A	Detail number Sheet number	A Numéro de détail B Numéro de la feuille		
Linear dimensions in millimetres		Dimensions linéaires en millimètres		

Nom de l'expert-conseil	Eng. Stamp Sceau de l'ingénieur

	Parks Canada	Parcs Canada
Strategic Asset Management, Western and Northern Region	Gestion Stratégique des Biens, Région de l'Ouest et du Nord	

Canada

Consultant's Name  
**BCL ENGINEERING LTD.**

Project title/Titre du projet  
**WASKESIU STORM  
WATER DRAINAGE  
PHASE II**

Drawing title/Titre du dessin  
**STORM WATER INTAKE MANHOLE  
SECTIONS & DETAILS**

Surveyed by/Arpenté par G.A.BULLEE	Drawn by/Dessiné par K.M.NIEDZIELSKI	Date 2022-09-28
Designed by/Concept par T.J.P.LEDDING	Reviewed by/Revisé par T.J.MAGUS	Scale/Échelle AS SHOWN

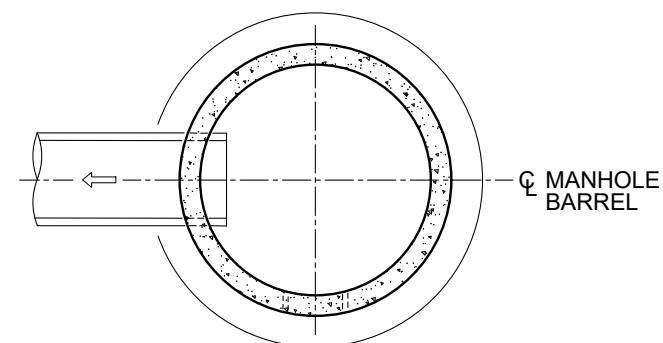
Client Acceptance/Acceptation du client	Approved by/Approuvé par
Date	Date

Project No./N° du projet 013.37	Asset No./N° du bien --	Sheet No./ N° de la feuille 08 of 12
------------------------------------	----------------------------	--

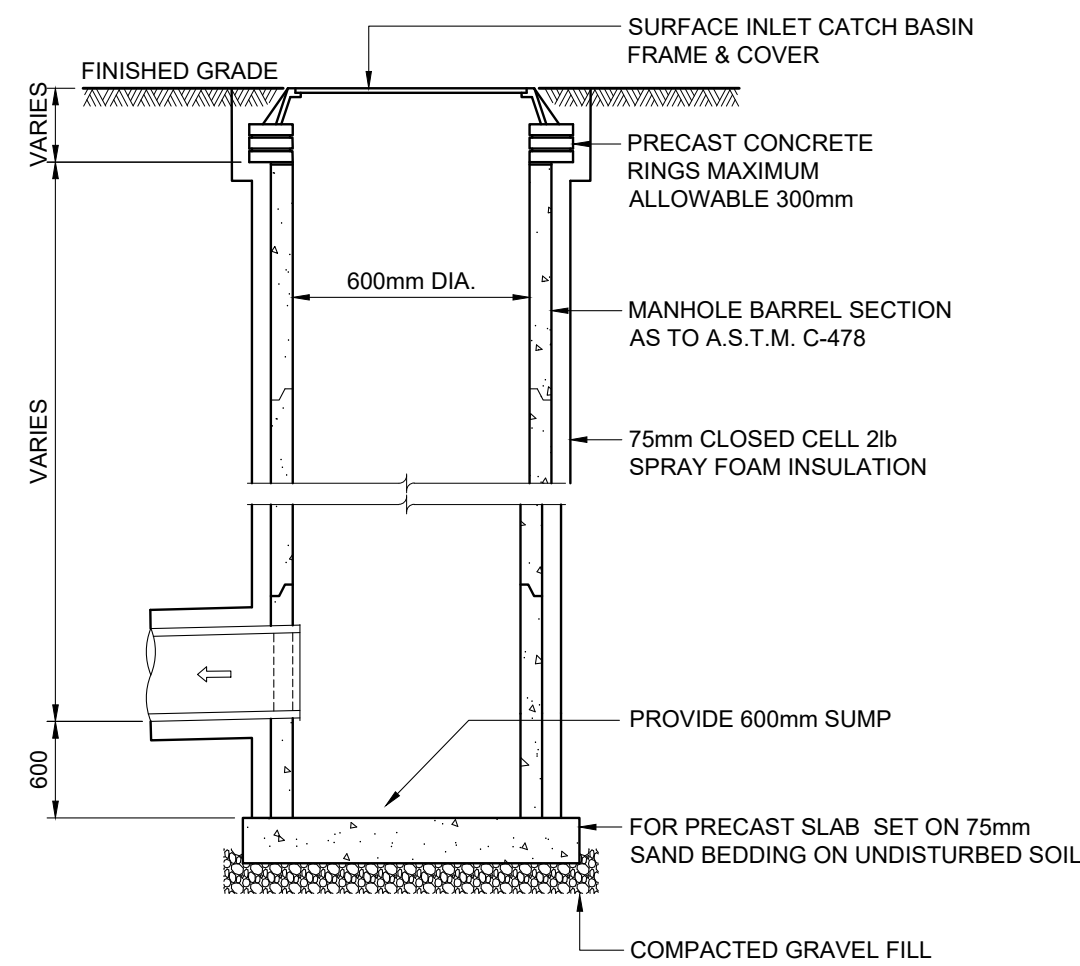






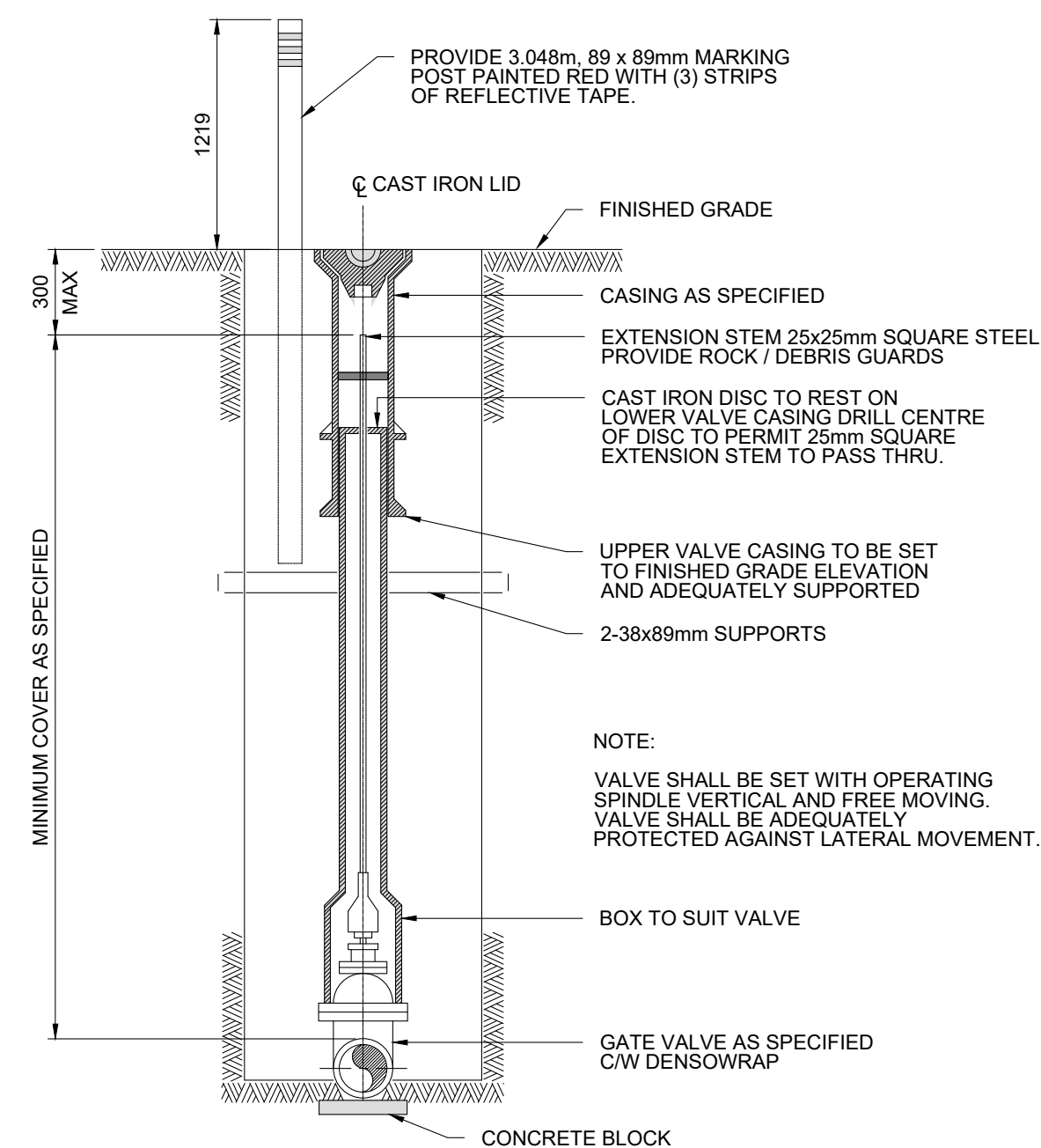


PLAN

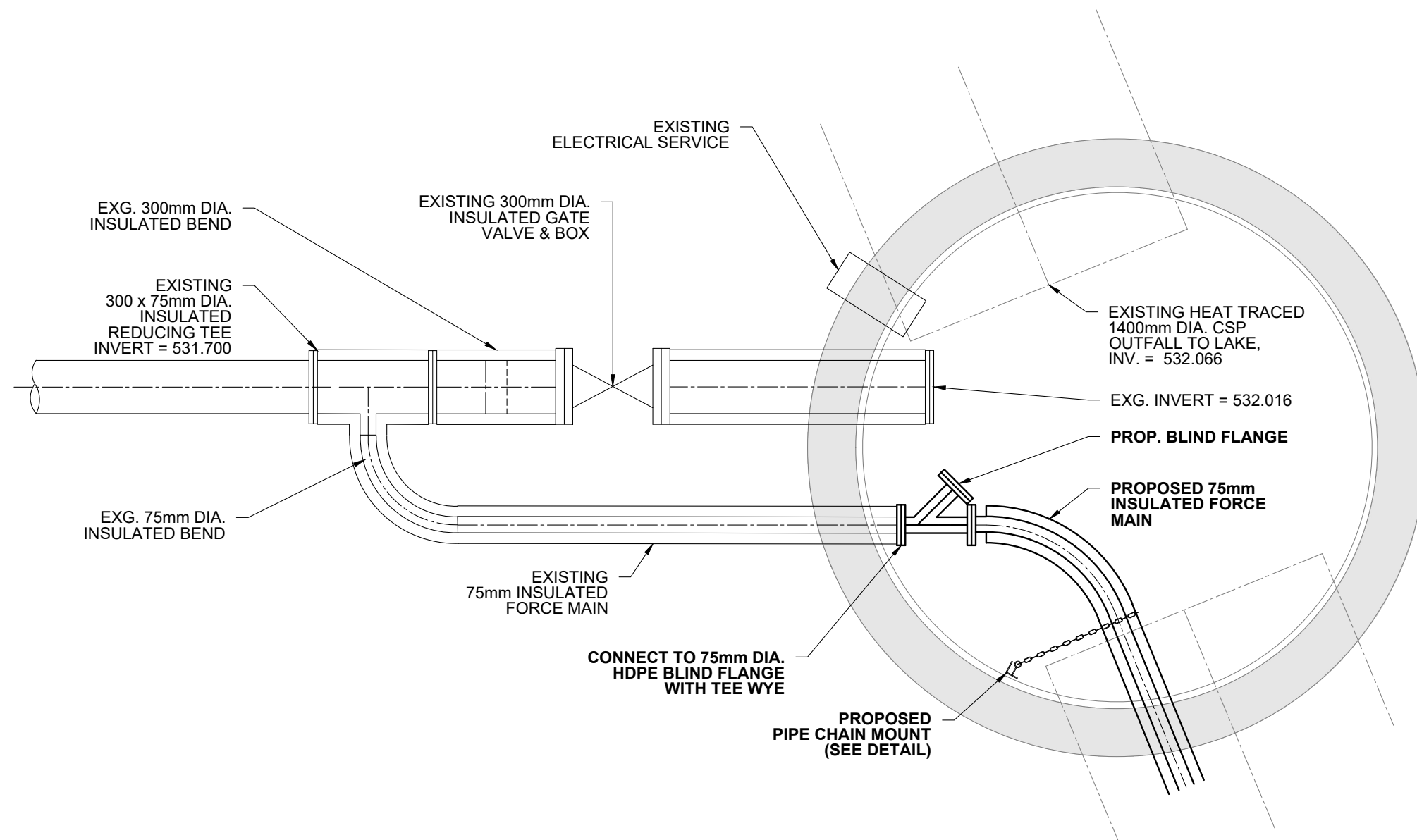


TYPE 2 CATCH BASIN  
SCALE N.T.S.

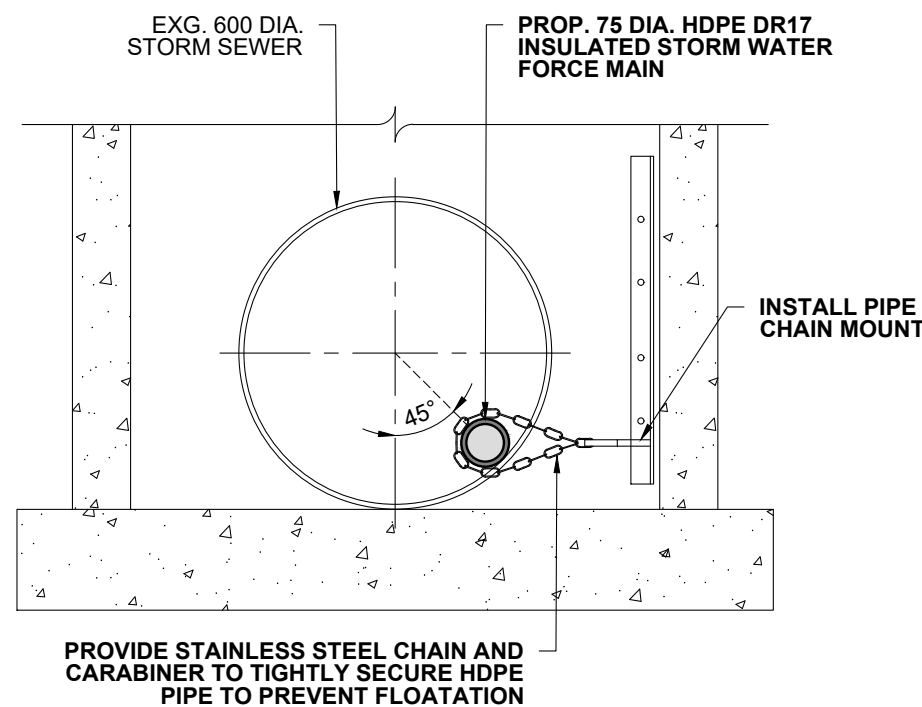
- NOTES:
- (2) CATCH BASINS REQUIRED.
  - MANHOLE TOP TO BE SET AS DIRECTED BY ENGINEER.
  - CEMENT MORTAR ALL JOINTS.



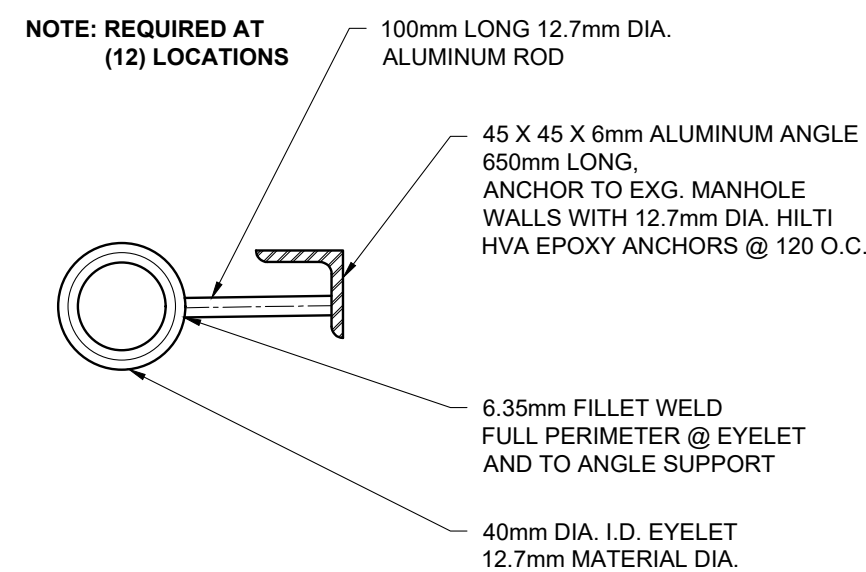
GATE VALVE INSTALLATION  
SCALE N.T.S.



PLAN - EXISTING OUTFALL MANHOLE  
SCALE 1:25

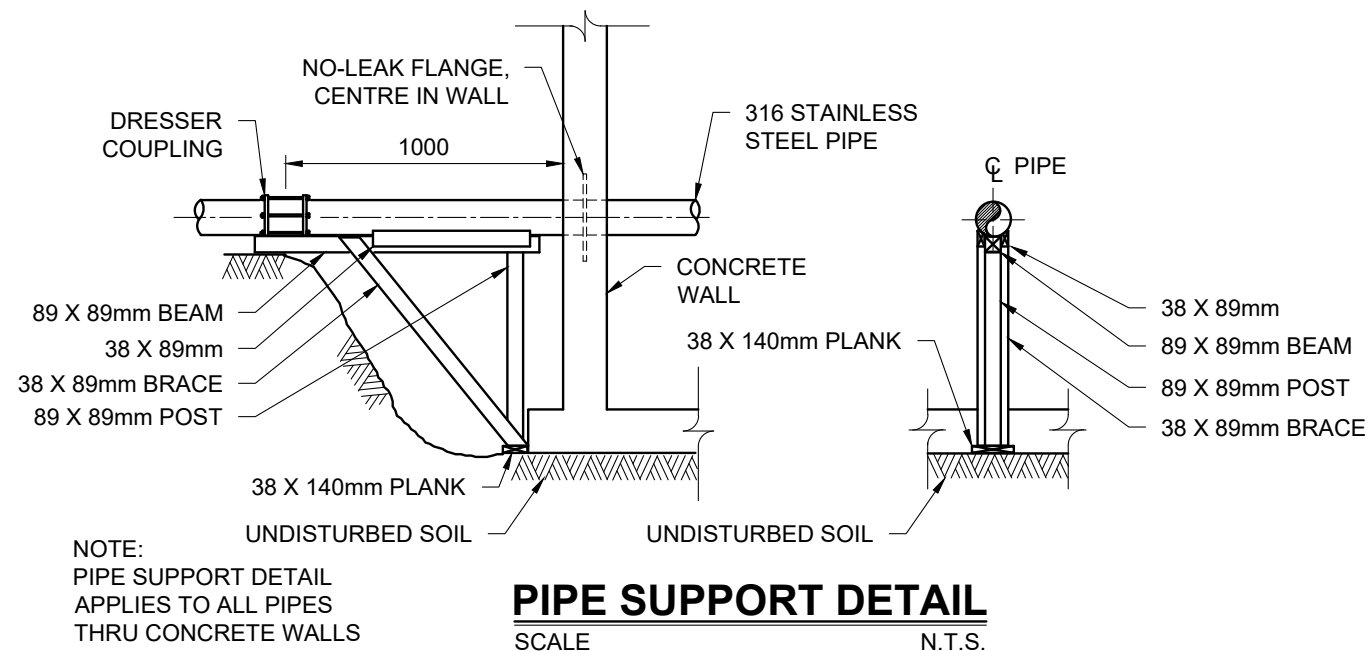


PIPE CHAIN MOUNT - SECTION  
SCALE N.T.S.

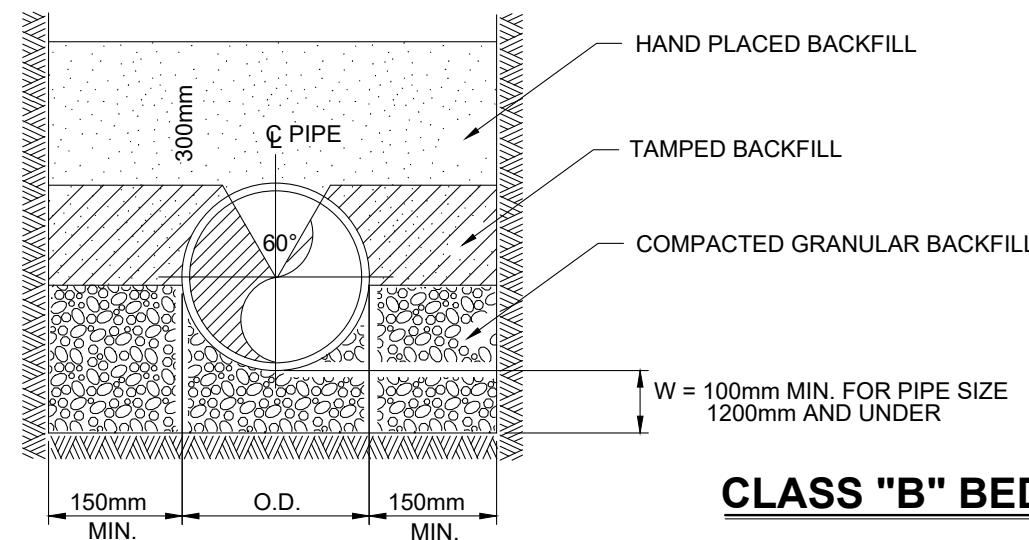


PIPE CHAIN MOUNT  
SCALE N.T.S.

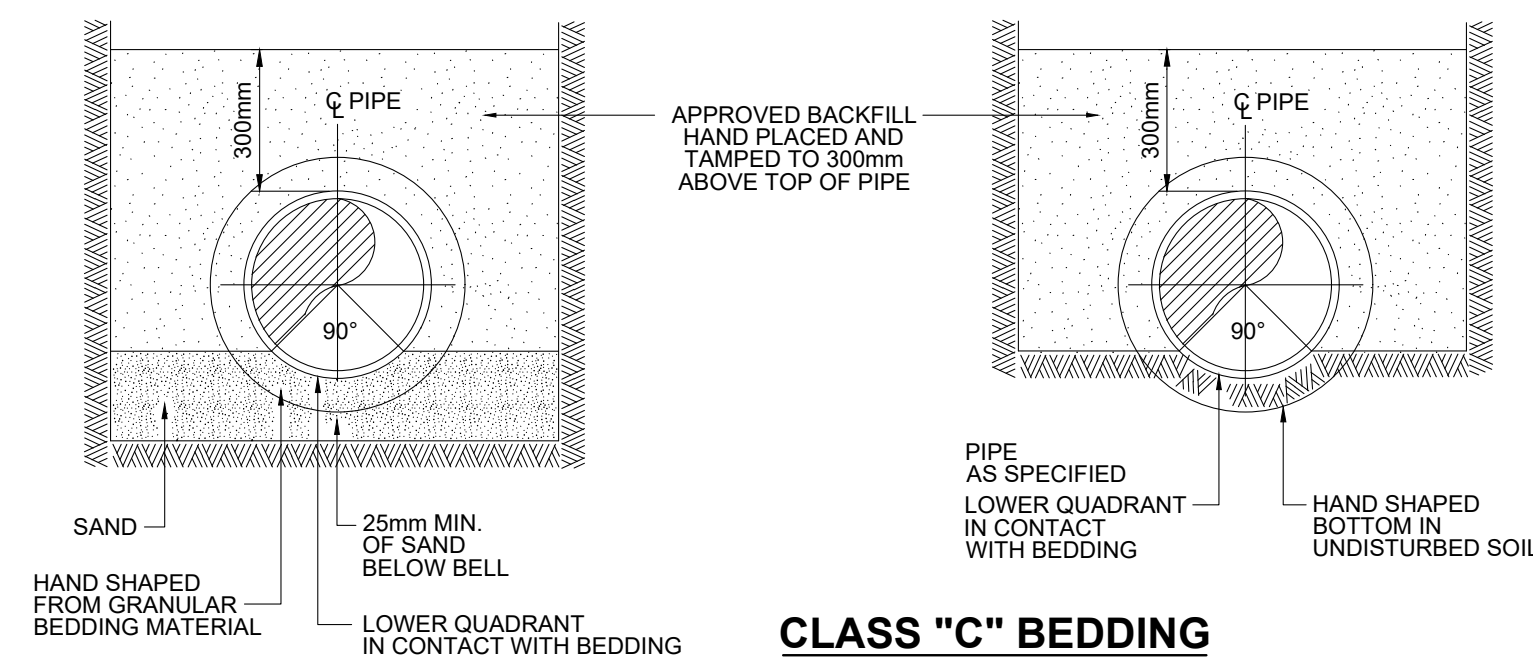
NOTE: ALL ALUMINUM ITEMS SHALL BE ALUMINUM ALLOY 6061



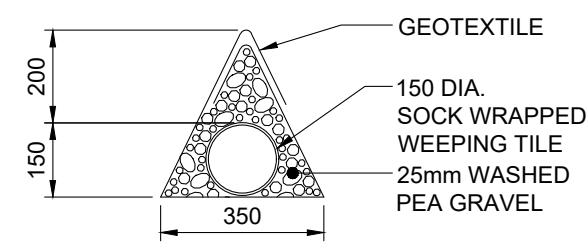
PIPE SUPPORT DETAIL  
SCALE N.T.S.



CLASS "B" BEDDING



CLASS "C" BEDDING



WEeping TILE DETAIL  
SCALE N.T.S.

ASSOCIATION OF PROFESSIONAL ENGINEERS  
& GEOSCIENTISTS OF SASKATCHEWAN  
CERTIFICATE OF AUTHORIZATION

BCL ENGINEERING LTD.

NUMBER C312  
PERMISSION TO CONSULT HELD BY:  
DISCIPLINE SASK. REG. No. SIGNATURE  
MUNICIPAL 16532

NOTES

- LOCATION OF ALL EXISTING UTILITIES SHOWN FOR INFORMATION PURPOSES ONLY; CONTRACTOR RESPONSIBLE FOR LOCATING AND PROTECTING ALL EXISTING UTILITIES FROM DAMAGE.
- ALL STORM FORCE MAINS TO BE INSULATED UNLESS OTHERWISE NOTED.

1	2022-09-28	ISSUED FOR ADDENDUM	K.M.N.	T.J.P.L.
0	2022-06-27	ISSUED FOR 75% REVIEW	T.J.P.L.	T.J.P.L.
No.	Date	Description	Drawn by Dessiné par	Approved Approuvé

Revision / Revision				
A B	Detail number	A Numéro de détail		
	Sheet number	B Numéro de la feuille		
Linear dimensions in millimetres		Dimensions linéaires en millimètres		

Nom de l'expert-conseil

Eng. Stamp  
Sceau de l'ingénieur

Parks Canada  
Strategic Asset  
Management,  
Western and Northern  
Region

Parcs Canada  
Gestion Stratégique  
des Biens,  
Région de l'Ouest et  
du Nord

# Canada

Consultant's Name  
**BCL ENGINEERING LTD.**

Project title/Titre du projet  
**WASKESIU STORM  
WATER DRAINAGE  
PHASE II**

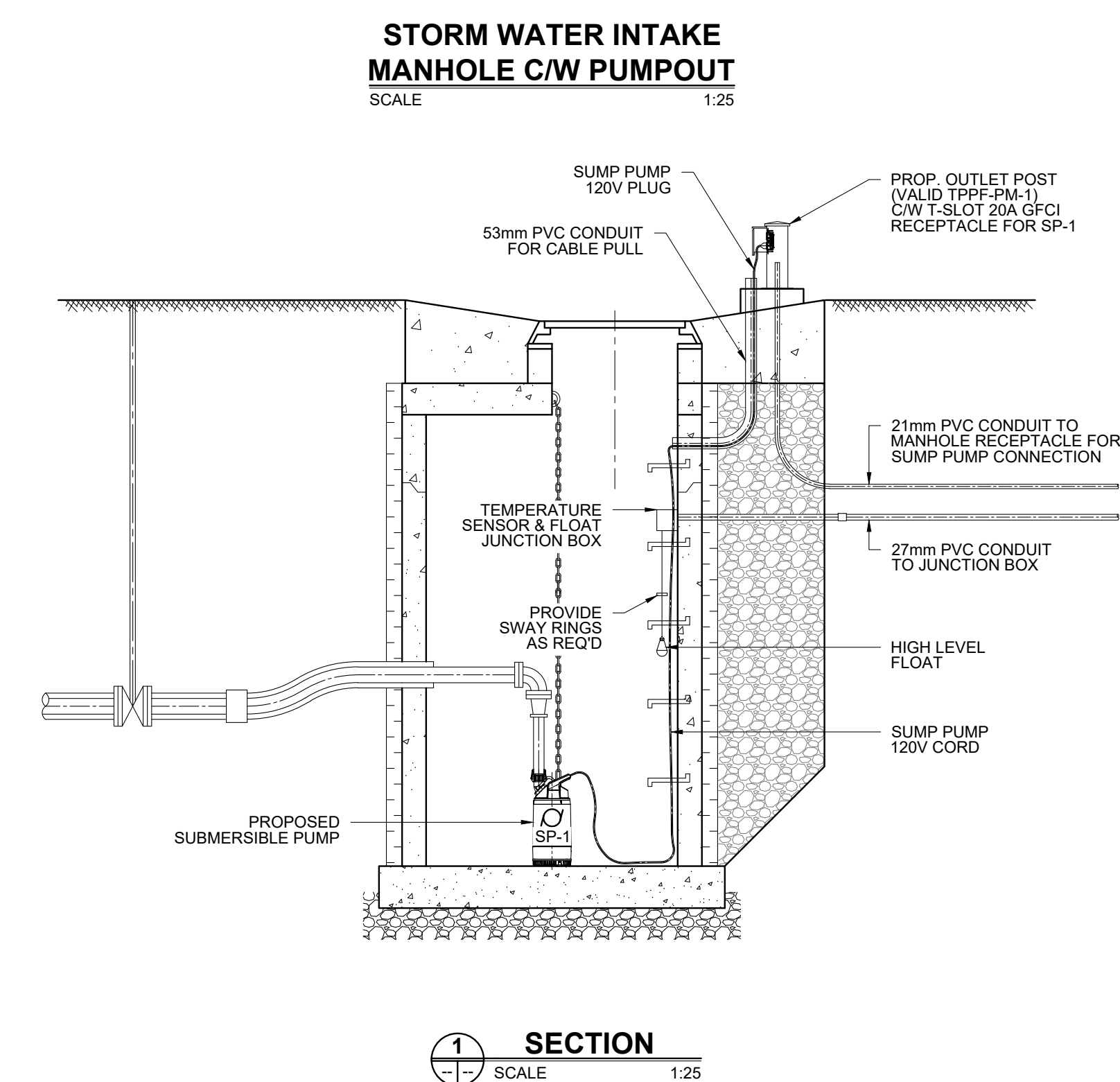
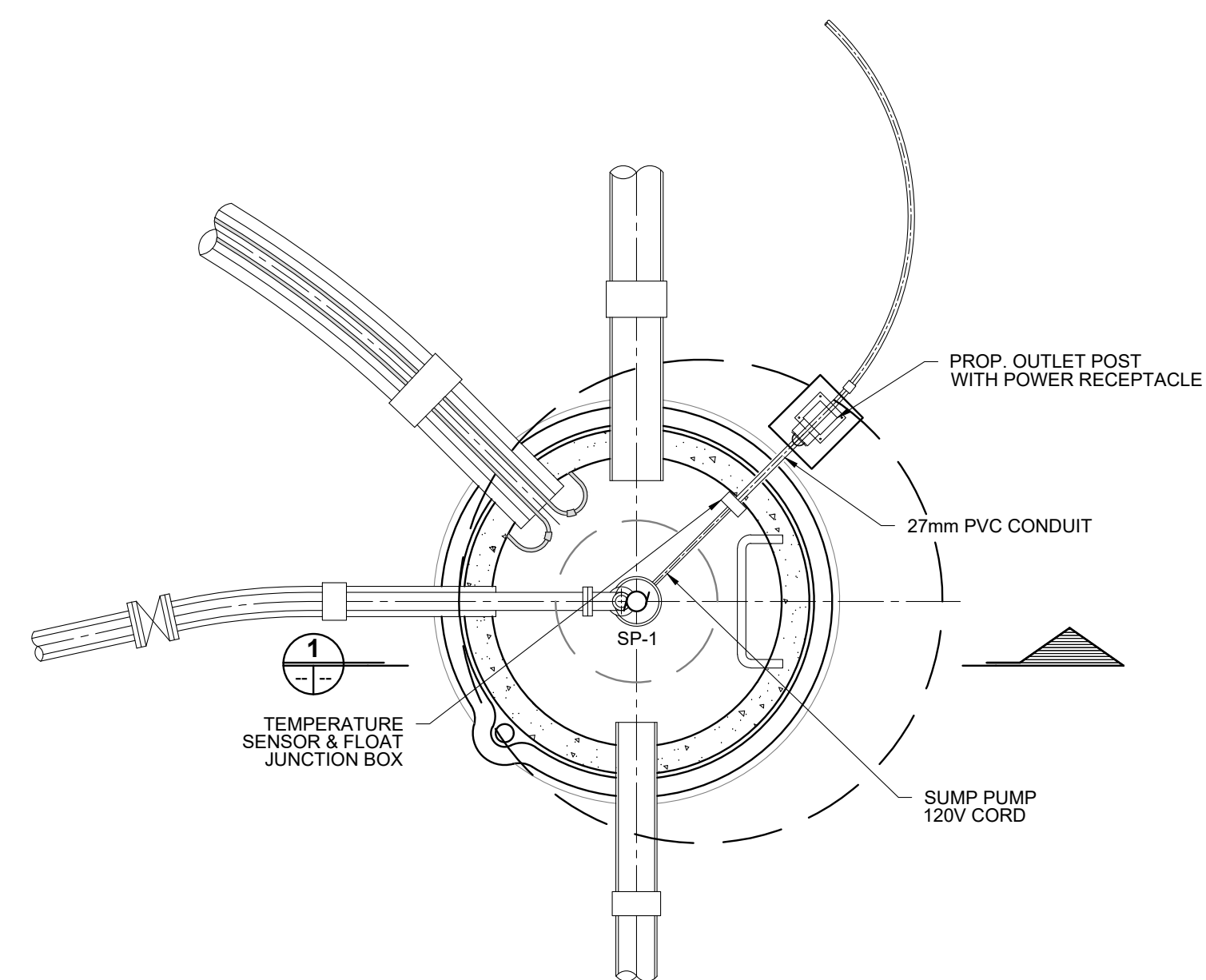
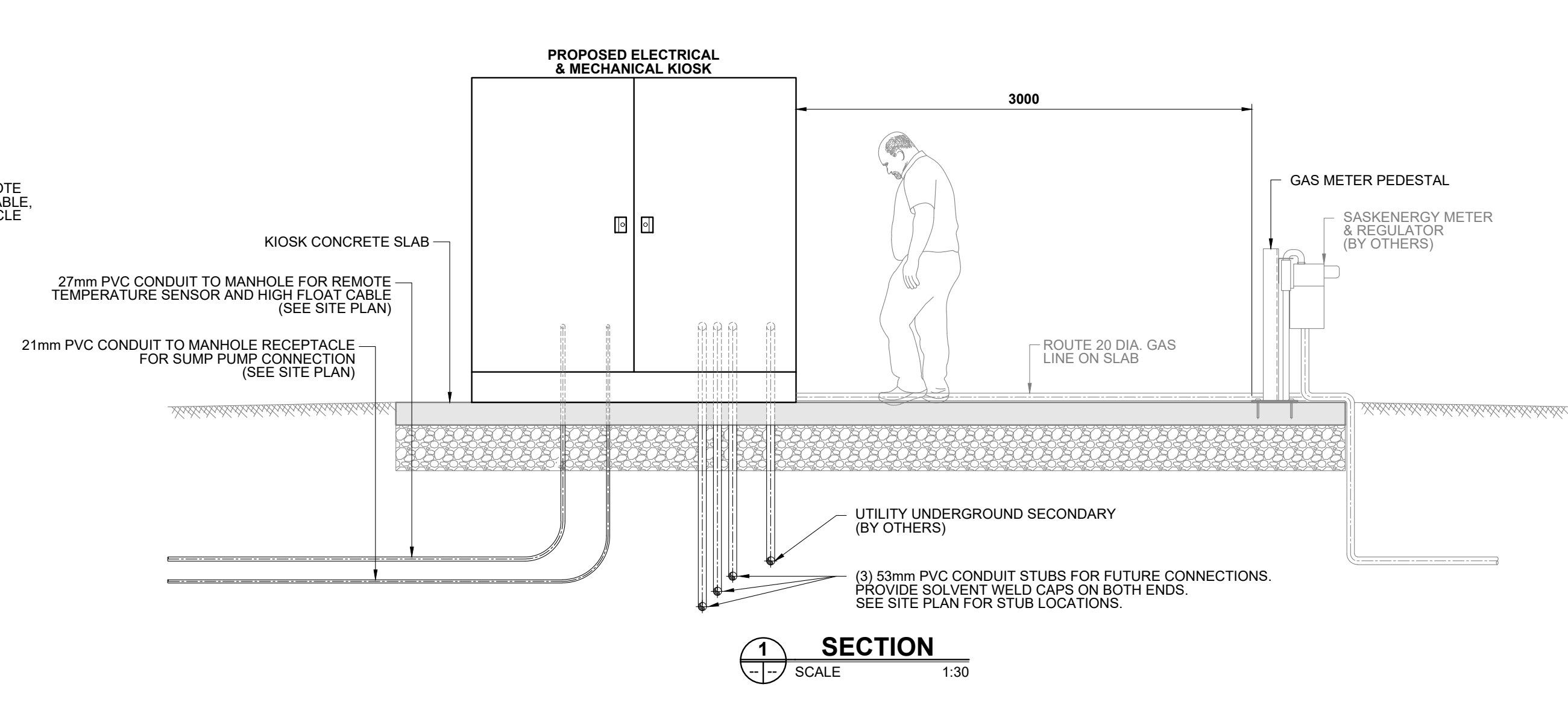
Drawing title/Titre du dessin  
**MISCELLANEOUS DETAILS**

Surveyed by/Arpenté par <b>G.A.BULLEE</b>	Drawn by/Dessiné par <b>K.M.NIEDZIELSKI</b>	Date <b>2022-09-28</b>
Designed by/Concept par <b>T.J.P.LEDDING</b>	Reviewed by/Revisé par <b>T.J.MAGUS</b>	Scale/Echelle <b>AS SHOWN</b>

Client Acceptance/Acceptation du client	Approved by/Approuvé par
Date	Date

Project No./N° du projet <b>013.37</b>	Asset No./N° du bien <b>--</b>	Sheet No./ N° de la feuille <b>10 of 12</b>
---	-----------------------------------	---

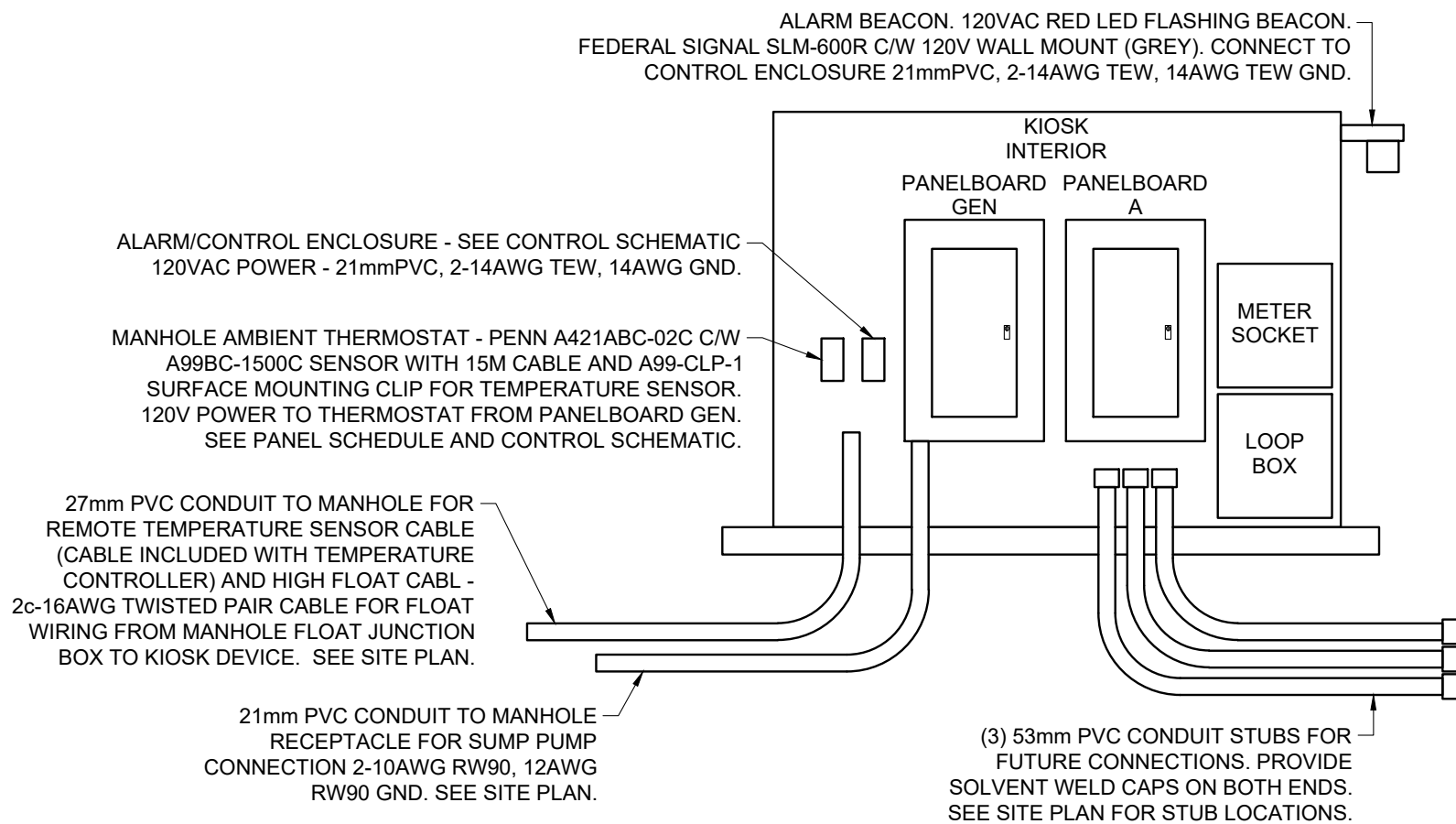




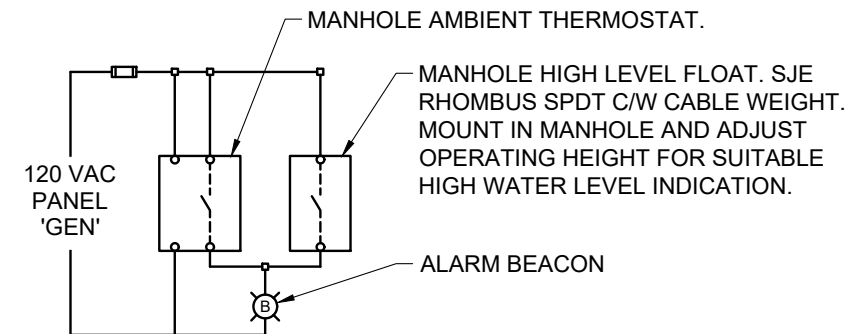
Project No./Nº du projet 013.37		Asset No./Nº du bien --	Sheet No./ Nº de la feuille 11 of 12
Drawing Set No./Nº de série du dessin			



A										
Location: Kiosk		Voltage(L-L): 208			Phase: Three		Wire: Four		Interrupt Rating: 22kA	
Mount: Surface		Bus Ampacity(A): 200			200A, 3P Main			Bolt-on Breakers		
Circuit Description	Load (VA)	Circuit Breaker Amp	Pole	Cct	PH	Circuit Breaker Cct	Pole	Amp	Load (VA)	Circuit Description
				1	A	2	2P	30	2,000	PANELBOARD 'GEN'
				3	B	4			2,000	
				5	C	6				
				7	A	8				
				9	B	10				
				11	C	12				
				13	A	14				
				15	B	16				
				17	C	18				
				19	A	20				
				21	B	22				
				23	C	24				
				25	A	26				
				27	B	28				
				29	C	30				
Panel SPD (across both sides)				31	A	32				Panel SPD (across both sides)
				33	B	34				
				35	C	36				
				37	A	38				
				39	B	40				
				41	C	42				
Total Load (kVA): 4,000			Connected Amps: 11							

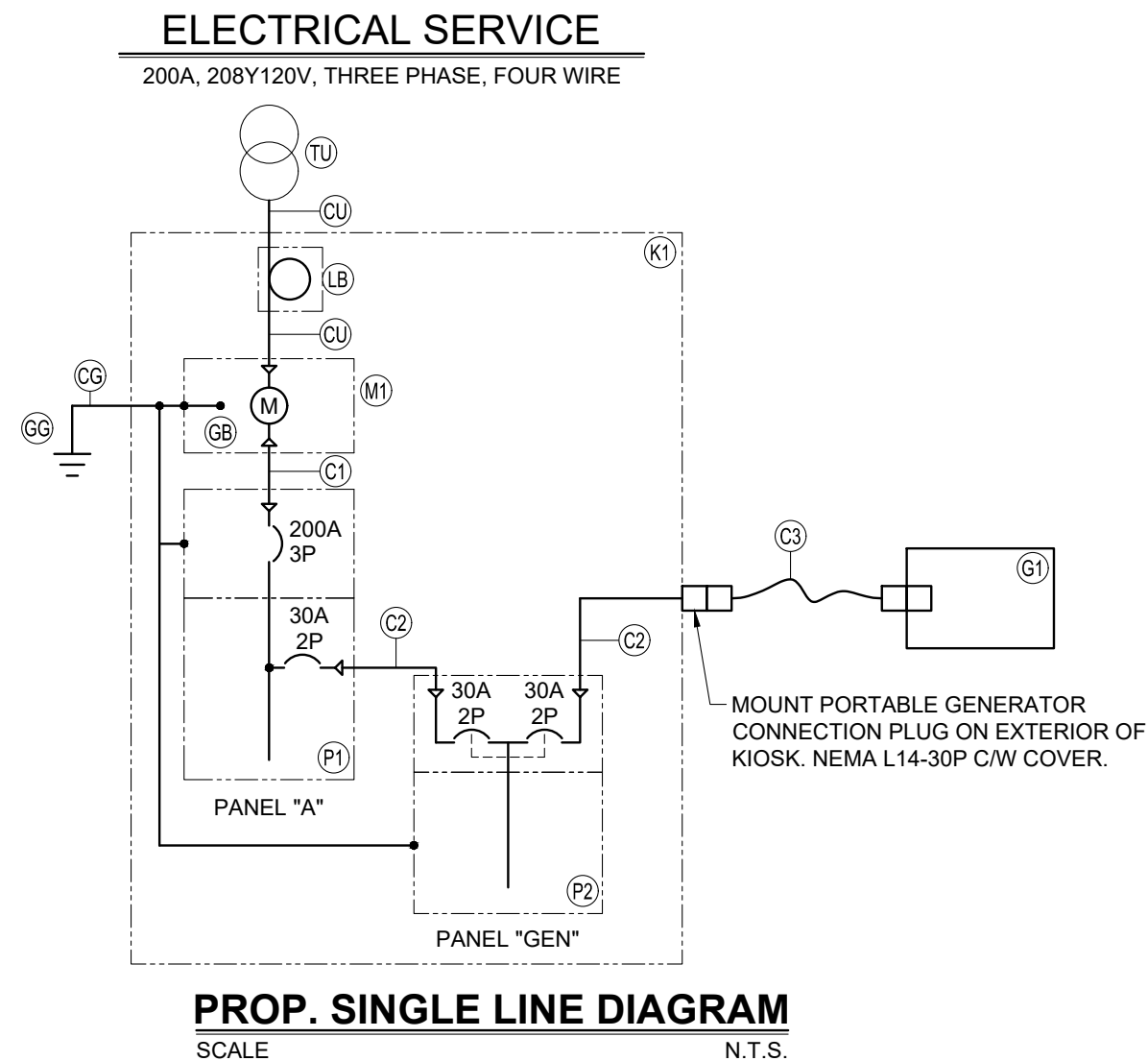


**PROPOSED ELECTRICAL EQUIPMENT ELEVATION**  
SCALE N.T.S.



**PROPOSED CONTROL SCHEMATIC**  
SCALE N.T.S.

GEN													
Location: Kiosk		Voltage(L-L): 240			Phase: Single			Wire: Three			Interrupt Rating: 10kA		
Mount: Surface		Bus Ampacity(A): 30						Generator Transfer Main			Push-on Breakers		
Circuit Description		Load (VA)	Circuit Breaker			PH	Circuit Breaker			Load (VA)	Circuit Description		
			Amp	Pole	Cct		Cct	Pole	Amp				
Manhole Sump Pump Receptacle Boiler System and P1, P2		1,500	20A	1P	1	L1	2	1P	15A	400	Kiosk Lighting and Receptacles		
		500	15A	1P	3	L2	4	1P	15A	750	Kiosk Electrical Heater		
					5	L1	6	1P	15A	750	Kiosk Boiler Heater and Fan		
					7	L2	8	1P	15A	50	Indicating Light Control Power		
					9	L1	10						
					11	L2	12						
					13	L1	14						
					15	L2	16						
					17	L1	18						
					19	L2	20						
					21	L1	22						
					23	L2	24						
					25	L1	26						
					27	L2	28						
					29	L1	30						
					31	L2	32						
Panel SPD (across both sides)					33	L1	34				Panel SPD (across both sides)		
					35	L2	36						
					37	L1	38						
					39	L2	40						
Total Load (kVA): 3,950			Connected Amps: 16										



## LEGEND

- CIRCUIT BREAKER
- SWITCH
- LOCKABLE FIELD DISCONNECT
- STAB TYPE DISCONNECT
- CONTACT - NORMALLY OPEN
- CONTACT - NORMALLY CLOSED
- CABLE CONNECTION
- THERMAL OVERLOAD
- MAGNETIC OVERLOAD
- CURRENT TRANSFORMER
- POTENTIAL TRANSFORMER
- POWER METER
- TRANSFORMER
- GROUND
- MOTOR

## ABBREVIATIONS

- 1P ONE POLE
- 2P TWO POLE
- 3P THREE POLE
- A AMPERE
- AC ALTERNATING CURRENT
- AF BREAKER AMPERAGE FRAME RATING
- AFF ABOVE FINISHED FLOOR
- AIC AMPERE INTERRUPTING CAPACITY
- AT BREAKER AMPERAGE TRIP SETTING
- AWG AMERICAN WIRE GAUGE
- °C DEGREES CELSIUS
- CEC CANADIAN ELECTRICAL CODE
- CT CURRENT TRANSFORMER
- CU COPPER
- DC DIRECT CURRENT
- EMT ELECTRIC METALLIC TUBING
- EX EXPLOSION PROOF
- ETM ELAPSED TIME METER
- FLA FULL LOAD AMPERES
- FVR FULL VOLTAGE REVERSING MOTOR STARTER
- FVNR FULL VOLTAGE NON REVERSING MOTOR STARTER
- GFCI GROUND FAULT CIRCUIT INTERRUPTER
- GND GROUND
- HP HORSEPOWER
- HOA HAND-OFF-AUTO SELECTOR SWITCH
- KA KILO AMPERE
- KVA KILOWATT AMPERE
- KW KILOWATT
- LSI LONG, SHORT AND INST. ADJ. TRIP
- m METRES
- mA MILLIAMPERES
- mm MILLIMETRES
- MDS MAIN DISTRIBUTION SECTION
- MCC MOTOR CONTROL CENTRE
- N/A NOT APPLICABLE
- NOM NOMINAL
- NTS NOT TO SCALE
- PB PUSHBUTTON
- POT POTENTIOMETER
- PTT PUSH TO TEST
- RPM REVOLUTIONS PER MINUTE
- RGS GALVANIZED RIGID STEEL CONDUIT
- RVAT REDUCED VOLTAGE AUTOTRANSFORMER STARTER
- RWPH RAW WATER PUMP HOUSE
- ↑ ELECTRICAL PHASE
- TYP TYPICAL
- SPD SURGE PROTECTIVE DEVICE
- SPS SEWAGE PUMPING STATION
- SLD SINGLE LINE DIAGRAM
- UVG UNDERGROUND
- VFD VARIABLE SPEED ALTERNATING CURRENT DRIVE
- W WATT
- WP WEATHERPROOF
- WTP WATER TREATMENT PLANT
- WWTW WASTE WATER TREATMENT PLANT
- WYE

## ALARM/CONTROL ECLOSURE NOTES

- ENCLOSURE TO BE BUILT BY A CSA APPROVED PANEL BUILDER.
- PROVIDE SPRING TERMINALS C/W WIRE FERRULES FOR ALL CONNECTIONS.
- PROVIDE CONTROL PANEL DRAWINGS.

## KEYNOTES

- C1 4-4/0AWG R90, 3AWG GND, PVC CONDUIT (230A - CEC TBL 2 @ 75°C)
- C2 3-10AWG R90, 12AWG GND, PVC CONDUIT (35A - CEC TBL 2 @ 75°C)
- C3 3-10AWG+GND SJOW - 5M LENGTH C/W L14-30R AND L14-30P CONNECTORS (35A - CEC TBL 2 @ 75°C)
- CG 3AWG BARE COPPER EQUIPOTENTIAL GROUND CONDUCTOR
- CU UTILITY SECONDARY FEED - UNDERGROUND CONDUCTORS. PROVIDE 78mmRGS CONDUIT FROM 1m UNDERGROUND TO LOOP BOX AND FROM LOOP BOX TO METER SOCKET. PROVIDE PVC SLIP SLEEVES 25mm LARGER THAN O/D OF CONDUIT.
- GB 3AWG BARE COPPER SYSTEM BOND JUMPER. CONFIRM LOCATION OF SYSTEM BOND JUMPER WITH CONFIGURATION SUPPLIED BY UTILITY. REFER TO UTILITY INFORMATION FOR SYSTEM BOND JUMPER DETAILS.
- GG GROUND GRID. 3 COPPER PLATED GROUND RODS IN TRIANGULAR FORMATION. SPACE GROUND RODS 3 METERS APART. GROUND RODS SHALL BE 19mm BY 6000mm. CONNECT ALL GROUND RODS WITH 3 AWG BARE COPPER GROUND CABLE. ALL CONNECTIONS SHALL BE MECHANICALLY CRIMPED.
- G1 7,000W PORTABLE INVERTER GENERATOR - 120/240V, C/W L14-30R CONNECTION. HONDA ULTRA QUIET EU7000isCT1 OR APPROVED EQUAL.
- K1 KIOSK ENCLOSURE - ALUMINUM DOUBLE-SIDED, DOUBLE-DOOR KIOSK. VALID MANUFACTURING DDS484848 - PC113 PARKS GREEN. COMPLETE WITH METER WINDOW, INSULATION, DOOR SWITCHES, LIGHTS, HEATERS, THERMOSTATS AND COMPLETE ELECTRICAL INTEGRATION. PROVIDE A COOLING FAN AND THERMOSTAT FOR THE BOILER COMPARTMENT IN ADDITION TO THE HEATER AND THERMOSTAT IN THAT COMPARTMENT. VALID MANUFACTURING TO INSTALL ALL EQUIPMENT IN KIOSK AS SHOWN OR INDICATED ON THE DRAWINGS AND SPECIFICATIONS. VALID MANUFACTURING TO CONFIRM ENCLOSURE SIZING. INSTALL METER SOCKET AND METER WINDOW TO SASKPOWER REQUIREMENTS. INTEGRATE LOOP BOX, METER SOCKETS AND PANELBOARDS. BOILER EQUIPMENT TO BE INSTALLED BY OTHERS.
- LB CABLE LOOP BOX - 305mm x 305mm x 150mm DEEP. PROVISION FOR UTILITY SEAL AS PER UTILITY REQUIREMENTS. LOOP BOX SHALL BE BONDED AS PER CODE REQUIREMENTS. INSTALLED 450mm ABOVE FINISHED GRADE, OR AS PER UTILITY REQUIREMENTS.
- M1 UTILITY POWER METER. MOUNT OUTSIDE BUILDING AS PER UTILITY REQUIREMENTS.
- P1 SCHNEIDER SQ D NO COMBINATION PANELBOARD, OR APPROVED EQUAL. 200A, 208Y120V, THREE PHASE, FOUR WIRE. SEE PANEL SCHEDULE FOR BREAKER COUNT, PANEL SIZE, INTERRUPT RATINGS AND SPD INSTALLATION.
- P2 SCHNEIDER HOMELINE GENERATOR PANEL - 30A, 240/120V SINGLE PHASE, THREE WIRE, 20 SPACES, 38 CIRCUITS. SEE PANEL SCHEDULE FOR BREAKER COUNT AND SPD INSTALLATION. MODEL CHGP3038 OR APPROVED EQUAL.
- TU UTILITY TRANSFORMER

## ELECTRICAL INSTALLATION NOTES

- ENSURE CLEARANCE REQUIREMENTS AROUND ALL ELECTRICAL EQUIPMENT, AS PER CEC AND THESE DRAWINGS AND SPECIFICATIONS.
- UNLESS INDICATED IN THE EQUIPMENT SCHEDULE, WIRING METHOD OF THE PROJECT SHALL BE PVC CONDUIT AND RW90 COPPER WIRING.
- RUN CONDUIT SQUARE TO STRUCTURES. GROUP CONDUIT RUNS WHERE POSSIBLE.
- SEAL AROUND ALL CONDUIT PENETRATIONS.
- SEAL THE BASES OF THE KIOSK TO CONCRETE PAD WITH POLYURETHANE SEALANT TO PREVENT RODENT ENTRY.
- ALL LOW VOLTAGE CONTROL WIRING SHALL BE IN SEPARATE CONDUITS FROM AC POWER CONDUITS.
- PROVIDE 300mm SEPARATION BETWEEN POWER AND CONTROL CONDUITS.
- DO NOT FASTEN CONDUITS TO MECHANICAL PIPING OR EQUIPMENT. COORDINATE SHARED MOUNTING POINTS IF EQUIPMENT CAN BE INDEPENDENTLY SERVICED.
- ALL UNDERGROUND ELECTRICAL CONDUITS TO BE BURIED 1000mm MINIMUM DEPTH.

ASSOCIATION OF PROFESSIONAL ENGINEERS  
& GEOSCIENTISTS OF SASKATCHEWAN  
CERTIFICATE OF AUTHORIZATION  
**BCL ENGINEERING LTD.**

NUMBER C0312  
PERMISSION TO CONSULT HELD BY:  
DISCIPLINE SASK. REG. No. SIGNATURE  
ELECTRICAL 46479

## NOTES

- LOCATION OF ALL EXISTING UTILITIES SHOWN FOR INFORMATION PURPOSES ONLY; CONTRACTOR RESPONSIBLE FOR LOCATING AND PROTECTING ALL EXISTING UTILITIES FROM DAMAGE.
- ALL STORM FORCE MAINS TO BE INSULATED UNLESS OTHERWISE NOTED.

1	2022-09-28	ISSUED FOR ADDENDUM	K.M.N.	S.K.J.
0	2022-08-27	ISSUED FOR 75% REVIEW	T.J.P.L.	T.J.P.L.
No.	Date	Description	Drawn by Dessiné par	Approved Approuvé

Revision / Revision

<div><div>A</div><div>B</div></div>	Detail number Sheet number	A Numéro de detail B Numéro de la feuille
Linear dimensions in millimetres		Dimensions linéaires en millimètres

Nom de l'expert-conseil

Eng. Stamp  
Sceau de l'ingénieur

Parks Canada

Strategic Asset  
Management,  
Western and Northern  
Region

Parcs Canada

Gestion Stratégique  
des Biens,  
Région de l'Ouest et  
du Nord

Canada

Consultant's Name  
**BCL ENGINEERING LTD.**

Project title/Titre du projet  
**WASKESIU STORM  
WATER DRAINAGE  
PHASE II**

Drawing title/Titre du dessin  
**STORM WATER INTAKE MANHOLE  
ELECTRICAL DETAILS**

Surveyed by/Arpenté par G.A.BULLEE	Drawn by/Dessiné par K.M.NIEDZIELSKI	Date 2022-09-28
Designed by/Concept par S.K.JESCHKE	Reviewed by/Revisé par T.J.P.LEDDING	Scale/Echelle AS SHOWN

Client Acceptance/Acceptation du client	Approved by/Approuvé par
Date	Date

Project No./N° du projet 013.37	Asset No./N° du bien --	Sheet No./N° de la feuille 12 of 12
Drawing Set No./N° de série du dessin		