



RETURN BIDS TO:

RETOURNER LES SOUMISSIONS À:

Bid Receiving - PWGSC / Réception des soumissions -
TPSGC

11 Laurier St. / 11, rue Laurier

Place du Portage, Phase III

Core 0B2 / Noyau 0B2

Gatineau

Quebec

K1A 0S5

Bid Fax: (819) 997-9776

**SOLICITATION AMENDMENT
MODIFICATION DE L'INVITATION**

The referenced document is hereby revised; unless otherwise
indicated, all other terms and conditions of the Solicitation
remain the same.

Ce document est par la présente révisé; sauf indication contraire,
les modalités de l'invitation demeurent les mêmes.

Comments - Commentaires

Vendor/Firm Name and Address

Raison sociale et adresse du
fournisseur/de l'entrepreneur

Issuing Office - Bureau de distribution

In-Service Support Marine / Soutien en Service
Maritime

11 Laurier St. / 11, rue Laurier

Place du Portage, Phase III

6C2

Gatineau

Quebec

K1A 0S5

Title - Sujet NETE 3 Naval Engineering Test Establishment (NETE) 3	
Solicitation No. - N° de l'invitation W8482-217850/F	Amendment No. - N° modif. 003
Client Reference No. - N° de référence du client W8482-217850	Date 2022-10-13
GETS Reference No. - N° de référence de SEAG PW-\$ISM-027-28782	
File No. - N° de dossier 027ism.W8482-217850	CCC No./N° CCC - FMS No./N° VME
Solicitation Closes - L'invitation prend fin at - à 05:00 PM Eastern Standard Time EST on - le 2022-11-18 Heure Normale du l'Est HNE	
F.O.B. - F.A.B. Plant-Usine: <input type="checkbox"/> Destination: <input type="checkbox"/> Other-Autre: <input type="checkbox"/>	
Address Enquiries to: - Adresser toutes questions à: Beaumier, Julie	Buyer Id - Id de l'acheteur 027ism
Telephone No. - N° de téléphone (613) 851-9981 ()	FAX No. - N° de FAX () -
Destination - of Goods, Services, and Construction: Destination - des biens, services et construction:	

Instructions: See Herein

Instructions: Voir aux présentes

Delivery Required - Livraison exigée	Delivery Offered - Livraison proposée
Vendor/Firm Name and Address Raison sociale et adresse du fournisseur/de l'entrepreneur	
Telephone No. - N° de téléphone Facsimile No. - N° de télécopieur	
Name and title of person authorized to sign on behalf of Vendor/Firm (type or print) Nom et titre de la personne autorisée à signer au nom du fournisseur/ de l'entrepreneur (taper ou écrire en caractères d'imprimerie)	
Signature	Date

Amendment 003

This amendment 003 is raised to:

- A. provide the slide deck presentation from the bidder's conference held virtually on Thursday September 22nd 2022;
 - B. provide notes and questions/responses during the site visit held on Saturday September 24th, 2022 at the NETE facility in LaSalle;
 - C. modify the RFP, and;
 - D. respond to questions from Industry.
-

- A. See attachment below for the slide deck presentation from the bidder's conference held on September 22nd, 2022
-

- B. Notes and questions/responses during the site visit at the NETE facility in LaSalle on September 24th, 2022:

Stop	Location
1	START IN CAFETERIA
2	INSTRUMENTATION
3	SALT FOG AND ENVIRONMENTAL CHAMBERS
4	MPTA
5	VIBRATION TABLE
6	SHOCK TEST
7	WELDSHOP AND MACHINESHOP
8	ENVIRONMENTAL TEST AREA 1ST FLOOR
9	DIESEL TEST CELL
10	HYDROSTATIC TESTING (OLD GTTC)
11	SUBMARINE ESCAPE SYSTEM
12	NORTH WING OFFICES
13	INFORMATION SYSTEMS (ICS) SERVER ROOM
14	CCS LAB
15	2ND FLOOR OFFICES
16	METROLOGY
17	CHEMISTRY LAB

2- INSTRUMENTATION

- Measurement and Instrumentation of most tests performed at NETE.
- Calibration of sensors and Test equipment
- Design of custom data acquisition, solutions, systems and sensors.
- Design of various test cells and their Control Systems (SES, LBTS, etc.)
- Micro Electronic and software design.
- Validation and testing of various DND electronic systems.
- Testing and data acquisition software and hardware development.

Questions:

Q. What amount of documents in this room is owned by Canada? Was it brought by the Incumbent and, if so, will the Incumbent bring them with him after the contract?

R. All documentation belongs to DND and will stay at the NETE facility, however, most of the information is currently kept electronically.

Q. Are the calibration standards kept in this room?

R. Most of the documentation are currently kept electronically.

GENERAL SHOP

- Shop build in 1953 with original purpose to test steam pumps after repair and overhaul and to carry out other investigation and testing
- Front offices built in late 1990's and houses offices for Engineers, Subject Matter Experts?, technologists and Project Managers supporting NETE tasks and as well as the instrumentation, chemistry and metrology labs
- New wings completed in 2017 under a major recap project to modernize NETE to support the current and future RCN T&E requirements.
 - Derelict East and West Wings were demolished and rebuilt to add useable workshop, laboratory and office space. The new Wings added approximately 2,800 m2 of space.

3a - SALT FOG

- Test conducted following the MIL-STD-810G, Method 509 standard;
- Equipment installed in the chamber @ 35 degree C;
- Atomize Salt solution for 24 hrs continuously follow by 24 hrs drying at ambient condition, then repeat the same injection for 24 hrs and drying at ambient condition for 24 hrs;
- Equipment functional test is to be conducted at the end of the test; and
- Inspection of the equipment for sign of corrosion or salt deposit.

3b - ENVIRONMENTAL CHAMBERS

- Test conducted following the MIL-STD-810G, Method 501 and 502 standard;
- Chamber temperature range : -73 C to 190 C;
- Chamber Humidity range: 10% - 98%;
- High temperature test, Operational and Storage mode are conducted;
- Low temperature test, Operational and Storage mode are conducted;
- Any other temperature test required are conducted as needed.

Question:

Q. How does the usage for all the equipment for DND work?

R. The usage rate of the equipment is variable based on the DND Client needs on relevant tasks at any given time. Royal Canadian Navy (RCN) requirements will always take priority over any potential usage of excess capacity. Canada will not quantify any potential excess capacity opportunities at this point in time. Any new task, external or internal, requires approval from CO NETE.

For the purpose of bid submissions, potential bidders should assume that no excess capacity exists.

4-MultiPurpose Test Area (MPTA)

- Climate controlled flexible test space
- Secured with Alarm System and restricted access so good for high value equipment and CG

Question

Q. What kind of test is perform in this area?

R. No reoccurring tests are performed in this area.

5 - VIBRATION TABLE

- Test conducted following the MIL-STD-167-1A standard and CFTO D-03-003-019/SG-001;
- Test conducted in three orientations, Vertical, Athwartship; fore-aft. The frequency range is from 4 Hz to 33 Hz;
- In each orientation, three test will be conducted. Exploratory (15 seconds per frequency); Variable (15 min per frequency) and Endurance test (2 hrs. if only one prominence frequency is selected, or 40 minutes at each prominence frequency if more than one frequency are selected);
- The Exploratory and variable test are used to select the prominence frequency (resonance frequency);
- Instrumentation is installed on the equipment to monitor the response of the equipment, special attention to the base, top and center; and
- Functional test to the equipment is conducted prior the test and after each orientation. The equipment shall be in operation condition during the entire test.

Questions:

Q. Is the replacement of the vibration table part of the NETE 3 contract?

R. No, procurement of a replacement vibration table is not factored in NETE 3. It will be replaced via a Government of Canada, Request for Proposal.

Q. Will the contractor be responsible for the installation of the new vibration table?

R. Yes, once the equipment is procured, the NETE contractor will be responsible for the installation of the new vibration table. A task will be issued to perform the work required. It is likely that this will be completed under the current NETE 2 contract prior to NETE 3 contract award.

6a – Medium Weight Shock Test (MWST)

- Test conducted following the MIL-DTL-901E standard and the CFTO D-03-003-007/SG-000;
- Shock test conducted to equipment weight from 250 lbs to 4000-4500 lbs depending on fixtures;
- Hammer head weighing 3000 lbs & arm 1500 lbs;
- Equipment installed on the fixtures and mounted on the Anvil table. Max weight above the anvil table is 7000 lbs;
- Anvil plate mounted on a base plate, installed on reaction mass (concrete weighing 90 000 lbs);
- Equipment tested in accordance with the grades: Grade A: Essential for the safety and continued combat capabilities. Grade B: Items whose operation is not essential for the safety and combat capability of the ship, but which could become a hazard to personnel operating or to grade A equipment;
- Grade A equipment will required 3 impacts per orientation; Grade B will required 2 impacts per orientation;
- Orientation selected based in the installation of the equipment on board ship. Restricted, Vertical axis specified, Unrestricted;
- Hammer high selected based on the total weight above the anvil plate;
- Data acquisition system to capture the energy transmitted during the impact is used during the test. Sensors location are installed in the equipment and fixture;
- High speed video recording is used as requested to visualize the impact in case of any failure; and
- Functional test to the equipment are conducted prior the test and after each impact. Grade A equipment shall withstand the shock test. Grade B equipment shall withstand the shock test without creating a hazard to personnel operating or manning grade A equipment.

6b – Light Weight Shock Test (LWST)

- Test conducted following the MIL-DTL-901E standard and the CFTO D-03-003-007/SG-000;
- Shock test conducted to equipment weight up to 250 lbs ;
- Equipment installed on the fixtures and mounted on the Anvil plate. The maximum weight on the Anvil plate is 550 lbs;
- Equipment size are limited to the dimensions of the fixtures and anvil plate;
- Equipment tested in accordance with the grades: Grade A: Essential for the safety and continued combat capabilities. Grade B: Items whose operation is not essential for the safety and combat capability of the ship, but which could become a hazard to personnel operating or to grade A equipment;
- Equipment will required up to 3 impacts per orientation;
- Orientations are Vertical, Athwartship and Fore-Aft;
- Hammer high selected based on the standard;
- Data acquisition system to capture the energy transmitted during the impact is used during the test. Sensor location are installed in the equipment and fixture;
- High speed video recording is used as requested to visualize the impact in case of any failure; and
- Functional test to the equipment are conducted prior the test and after each impact. Grade A equipment shall withstand the shock test. Grade B equipment shall withstand the shock test without creating a hazard to personnel operating or manning grade A equipment

7 – WELD AND MACHINESHOP

- Fully equipped weld and machine shop to support fabrication for test and evaluation activities and maintenance
 - Test rigs
 - Shock and vibration fixtures and interface plates
 - Machine shop is equipped with a CNC boring mill and lathe, drill presses, milling machines and vertical and horizontal band saws.
 - Various welding processes; GMAW, SMAW, FCAW, TIG

8- ENVIRONMENTAL TEST AREA (ETA) 1st FLOOR

- The Environmental Test Area (ETA) is a space for testing and evaluating marine environmental protection equipment for Navy ships in a controlled environment.
- We typically evaluate system performance against manufacturer claims and test according to IMO and other environmental regulations.
- The ETA has 2 floors, independent climate control, protected sewer for discharges, stack to vent emissions, electrical power supply, calibrated monitors displaying time, temperature and relative humidity, spill kits, and a shower/eye rinse station for health and safety purposes.
- Test rigs are assembled for specific equipment as required and include tanks, circulation pumps, power meter, and instrumented pipe work to measure flow rates, pressures, temperatures and pH, data is monitored and recorded by a Data Acquisition System (DAS)
- Level 1 is dedicated to testing liquid waste treatment systems:
 - Oily water/bilge separators
 - Currently we are evaluating Oily Water Separators (OWS) for potential use onboard Halifax Class ships (JOWA & RWO – coalescer/filter systems)
 - We have tested performance of systems with different technologies (chemical separation, electrocoagulation)
 - Sewage Treatment System (new!)
 - DVZ-JZR-100 'Biomaster' Microbiological Reactor Sewage Treatment Plant
 - Same system installed on AOPS.
 - Process where activated microorganisms (bacteria) feed off each other, and remove suspended solids creating a sludge of active bacteria, which keeps the treatment process active, and produces clean effluent that can be safely discharged overboard according to IMO MEPC regulations.
 - We are investigation options for testing with synthetic sewage influent (instead of real sewage).
- Level 2 is dedicated to testing solid waste treatment systems:
 - Currently we are testing a newly acquired Solid Waste Processing System that is being installed on Halifax Class ships; Waste Processing Technologies (WPT) Model WP02 MIL
 - Aim is to gain knowledge and expertise with operations, assess safety protocols, maintenance activities and troubleshooting requirements.
 - System will extend endurance for long deployments with minimal port visits, and operations in special areas by reducing the quantity of garbage stored onboard.
 - Two main components include a Waste Processing Unit and Main Control Cabinet.
 - The processing chamber contains a dual rotor (hammer and blades) capable of processing cardboard, paper, plastic, food, glass and metal.
 - Waste is heated to pasteurization temperature; processed waste (output) is dry and free of pathogens and bacteria.
 - Capacity to process up to 200 liters of waste per cycle.
 - Volume reduction ranges between 60-90% depending on waste input.

Questions:

Q. How much work is performed for Canadian Coast Guard (CCG)?

R. This can vary significantly. In FY20/21, there was one task created in support of CCG for a value of approximately \$50k. Potential bidders should note that there is no guaranteed throughput coming from CCG and that any task created in support of CCG must be done on a non-interference basis with the requirements of the RCN.

Q. Is there work performed on smaller ships?

R. Note that any equipment, system, or platform currently used or under consideration to be used by the RCN can potentially be a candidate for NETE work on future task. The nature of this work must be linked to either expert Test and Evaluation or Independent Verification and Validation. NETE is not an In-Service Support contractor for the RCN. Smaller RCN ships are currently maintained under the MWAV or AJISS contracts.

9- DIESEL TEST CELL

- First commissioned in June 1998
- Dynamometer Capacity up to 2100kW (Schenck D2100e)
- Custom built (in-house) Data Acquisition and Control System (DACS)
- Fully equipped with all supporting services (Fuel, Exhaust, Service Water and etc.)
- Currently support 3 type of diesel engines:
 - Halifax Class diesel-generator engine, MWM TBD 602 V16 K (tested 100+);
 - Kingston Class diesel-generator engine, Wartsila UD-23, (tested 6); and
 - Victoria Class diesel-generator engine, Paxman Valenta 16RPA200SZ (commissioning completed).

Questions

Q. Where are the different diesel test sets stored and maintained?

R. All diesel sets are stored and maintained on site in LaSalle.

Q. Will there be work to be performed on the Light Armoured Vehicle (LAV) as well as the Leopard?

R. No work is currently being performed on the LAV. Future work agreements are not yet finalized.

Q. Is NETE 2 currently working on tasks coming from 202 Workshop?

R. No, NETE 2 is currently not working on tasks for 202 Workshop.

Q. Where is the equipment located outside of NETE?

R. Any equipment that is outside the LaSalle facility are defined by the DND clients within the individual tasks. All pertinent locations that involve core business functions are listed in SOW Appendix 4.

Q. Who is maintaining the infrastructure outside of this building?

R. Assistant Deputy Minister (Infrastructure & Environment) (ADM (IE))

10 – HYDROSTATIC TESTING (OLD GTTC)

- Former gas turbine test cell for GE T-64 turbo-prop engines used on Buffalo SAR aircraft. Is currently the NETE hydrostatic testing area.
- NETE can perform hydrostatic pressurization / burst tests up to 30,000psi. Within the test cell we have access to all NETE's instrumentation capability including strain, pressure and temperature measurement as well as high speed video capture.
- Examples of testing performed in the test cell are as follows:

Corroded Hydraulic Start System (HSS) Piping:

- NETE recently conducted burst pressure tests of Hydraulic Start System (HSS) piping in order to quantify the risk associated with wall thickness losses due to extreme corrosion;
- A series of samples were fabricated from representative pipe material with wall thickness losses up to 50% simulated by machining.
- Burst pressures have ranged from ~15,000 psi (for 50% wall pipe) to 29,850psi (no burst) for a full wall thickness pipe;
- Test results supported ongoing risk assessment and helped lift some of the restrictions put in place limiting the use of the HSS and restricting access of Ships Staff to affected spaces during engine start up.

Periscope Tube Testing:

- To determine the effect of a manufacturing defect on a Victoria Class periscope tube, NETE fabricated and hydrostatically burst tested 6 replicas of the lower 3ft of the periscope tube.
- The defect was expected to have a direct impact on a safety feature of the periscope tube assembly;
- Each sample was fully instrumented for strain, temperature and pressure to quantify defect influence on periscope tube design limits; and
- Results cannot be shared at this time however they will be used to determine if the tube can be accepted as is from the OEM or if repairs/replacement are required.

11 – Submarine Escape System (SES)

- The NETE Submarine Escape System (SES) Test Bed is a unique facility that is fully automated and simulates all phases of a tower escape from a disabled submarine, including the flood, compression and ascent in real time.
- The SES Test Bed is rated from 10 to 350 msw, and can also replicate raised compartment pressures up to 5 bar.
- Fully instrumented, and is able to conduct complete escape cycles at less than 10 minute intervals. The SES Test Bed can be used to evaluate the performance of escape components (i.e. escape suits, BIBS components) through a number of measured parameters, such as pressure, air flow, hood water level and temperature.
- Can also be used to determine the capacity of a submarine escape system itself (i.e. Built-in-Breathing System or BIBS).

Question:

Q. How many technicians and technologists are cross trained?

R. The breakdown of minimal thresholds to be met for business continuity requirements are detailed in SOW Appendix 4. Canada does not impose cross training restrictions beyond this minimal thresholds requirement.

12 – NW OFFICES – NO REAL COMMENTS

13-ICS LAB

- Combined with the adjacent space in E2-09 and a subset of the equipment in the SPR (E1-09), the facility houses representations of systems and networks used on ships, submarines and the RCN network operating centres that support them;
- It is a unique and strategic capability that provides the RCN with a means to perform comprehensive testing and risk reduction;
- Major clients are Technical Authority/LCMMs in MEPM and the major shipbuilding PMOs;
- The equipment represents systems and networks that are either in-service or that are under development;
- We aim to achieve a high level of testing fidelity by incorporating Type-1 cryptographic equipment, WAN emulation and other low level configuration so make the systems as close as possible to production. This includes having connections to national testing labs in Tunney's Pasture and Carling Campus for enterprise level systems and services;
- Personnel from the ICS group access the test systems remotely and securely, addressing the scope of approximately 20 NETE Tasks.

14 - CCS LAB

- Support to Combat System Equipment Test & Evaluation (e.g. control systems, communications, navigation equipment, sensors),
- Electronics work for Assembly and testing of prototype and customized data acquisition systems (including in the enclosed section)
- Support to Ship Signature Ranging T&E activities (e.g. infrared), equipment maintenance and calibration, field trial preparations.

15- 2nd FLOOR OFFICES

Questions:

Q. Where are the manager(s) located?

R. The front offices built in late 1990's and houses offices for Engineers, SME, technologists and Project Managers supporting NETE tasks. These are located on the floors above the instrumentation, chemistry and metrology labs

Q. How many engineers allocated per cubicle?

R. This information is considered commercially sensitive and will not be released.

Q. Can you provide the previous 5 years utilisation, how many hours by labour category?

R. This information is considered commercially sensitive and will not be released. The breakdown of minimal thresholds to be met for business continuity requirements are detailed in SOW Appendix 4.

Q. Where is the location for the different positions?

R. The breakdown of minimal thresholds to be met for business continuity requirements are detailed in SOW Appendix 4.

16 – METROLOGY

- Carryout calibration of test equipment
- Support task and testing activities by taking precise mechanical measurements
- Work with Calibration Program Management Solution (CPMS, formally TEMMIS) for some calibrations

17 – CHEMISTRY

- The Chemistry Lab specializes in the analysis of fuel and oil samples, but also conducts quite a bit of analysis on coolant and water samples.
- The lab supports several tasks, one of the largest is the Oil Coolant Condition Analysis Program (OCCAP) where we verify that the contract lab for the OCCAP program is conducting the analysis properly by doing blind check samples on a batch of oils and coolants from certain systems on board ship each quarter from alternating coasts.
- There is a fuel collection program during ship deployment that the lab supports where we send approximately a dozen fuel cans for the ship to collect fuel samples at every pickup (port, truck, Replenishment at Sea (RAS)) to then ship back for analysis and insertion into our fuel trends database.
- The lab also conducts an annual verification/calibration on the Dieso Filtration Test Kit (DFTK), Kittiwake Oil Test Centre (OTC), and Bacharach leak detector kits utilized for oil, fuel, and refrigerant leak detection analysis respectively.
- The lab supports the testing of Oily Water Separators (OWS) where we make the synthetic bilge mix and conduct analyses on the influent and effluent samples.
- We conduct the Rain and Salt Fog tests using the Salt Fog/Rain chamber when required by a task.
- We are the subject matter experts when it comes to conducting the Chemical Biological Radiological and Nuclear (CBRN) testing with respect to leakage rate verification of the High Efficiency Particulate Absolute (HEPA) and gas filters both in-house (HEPA only) and onboard ship, as well as gas emissions testing both in-house and onboard ship.

CAFETERIA

Questions

Q. Can you provide an assessment on the future requirement for the Royal Canadian Navy and where it is really heading?

R. Canada cannot provide any definite guarantees of future realities. NETE must remain flexible in adapting to emerging demands. Given the typical project lifecycles of major capital projects, the ones that are expected to provide the most impact to the current model during the course of NETE 3 are the Canadian Surface Combatant project and the new Canadian Submarine Replacement Project.

Q. Is the NETE facility set up to perform nuclear work/testing?

R. At this point in time, there is no work or testing being conducted at NETE linked to nuclear nor is there a future plan to do so. If the RCN were to consider expert T&E or IV&V for nuclear systems in the future, NETE may be asked to adapt to this potential requirement.

C. Modification to the RFP

In the RFP section 5.1.3 and 7.5 Independence, Restrictions on Bidding, and Confidentiality.

Delete: Paragraph 7 in it's entirety

Insert:

7) The Contractor must safeguard all third party proprietary or confidential information, which may be provided to the Contractor during the performance of the Contract, to the same degree as the Contractor safeguards its own similar information, and sign the applicable Non-Disclosure Agreement provided at **Annex E**. The Contractor should disclose same only to those Contractor personnel or Team Members who have a need-to-know for the purposes of the Contractor's performance of the Contract, unless the Contractor obtains the prior written authorization of the Contracting Authority for any further disclosure, and at a minimum the Contractor must have each entity and person to whom any proprietary or confidential information is to be disclosed sign the applicable Non-Disclosure Agreement provided at **Annex E** before starting Work on any task under the Contract.

In the Basis of Payment Annex C:

Delete: Section 3 Work Element 3 in it's entirety

Insert:

3. Work Element 3

- 3.1 In consideration of the performance of its obligation under the Contract, for Work Element 3, the Contractor will be paid the firm annual price per Contract year identified in the Table below, based on the total number of hours charged to Canada for all categories of labour for Work Elements 1 and 2 for that Contract year.
- 3.2 During the first Contract year, the Work Element 3 payment will be made on the basis of Low Throughput. The throughput will be adjusted at the beginning of the following Contract year based on the actual throughput of the first Contract year. Thereafter, the Work Element 3 payment will be made on the basis of the level of throughput for the prior Contract year, and adjusted at the beginning of the following Contract year, if necessary. Payment will be made monthly, subject to invoice, as progress payments, subject to adjustment thereafter as specified above.
- 3.3 Notwithstanding the above, the Contractor will not be paid any amount for Work Element 3 until the Contractor has successfully met Article 7.6 of the RFP. Once the Contractor has successfully met 100% of the NETE core services positions identified at SOW Appendix 4 and 90% of the remaining position (Combat Systems, Information systems and Marine Systems), the Work Element 3 payment will be reduced by 5% to a maximum of 25% of the Work Element 3 amount, for each skill and knowledge requirements not met and until such time as each is met to the satisfaction of Canada.
- 3.4 The above rate must be inclusive of all direct and indirect costs including profit. Customs duties are excluded and Applicable Taxes are extra.

Table 2 – Management Fee (Work Element 3)

N° de l'invitation - Solicitation No.
W8482-217850/F
N° de réf. du client - Client Ref. No.
W8482-217850

N° de la modif - Amd. No.
003
File No. - N° du dossier
027ism.W8482-217850

Id de l'acheteur - Buyer ID
027ism
N° CCC / CCC No./ N° VME - FMS

Work Element 3 Costs	Year 1	Year 2	Year 3	Year 4	Year 5
Low Through Put Up to 300,000 Hours	\$	\$	\$TBD	\$TBD	\$TBD
Medium Through Put 300,000 to 500,000 Hours	N/A	\$	\$TBD	\$TBD	\$TBD
High Through Put Over 500,000 Hours	N/A	\$	\$TBD	\$TBD	\$TBD

In the Statement of Work Annex B:

Delete: 47.6 in its entirety

Insert: 47.6 The reports required are the following:

47.6.1. Task Budget and Status Report: For each individual task, a monthly status report must be submitted to the DND Task PM. This report must detail the progress made on the task to date, actual costs as invoiced on the latest progress claim, and the projected cost and schedule at completion of the task with any explanations of variances from that originally stated in the Task Description. The report must indicate estimated expenditures by fiscal year. The report must be submitted monthly until completion of the task and must be distributed to the DND Task PM. If requested, a copy of the report must be made available to the TA.

47.6.2 Contract Budget and Status Report: Concurrent with the submission of the monthly progress claim, the Contractor must submit a report summarizing the status of all active tasks under the Contract. This report must detail the task number, description, the current authorized budget and completion date, the current projected budget and completion date, and the amount expended to date.

In the NETE Business Continuity – Minimum Requirements SOW Appendix 4

Delete : ID 1 in its entirety

Insert: ID 1

1	Knowledge of Operational Test and Evaluation and Operational Analysis of Live Firings (Missiles and Torpedoes)	Minimum 8 individuals including at least one Naval or Military Systems Specialist in addition to 7 individuals with any combination of Senior Engineer and Senior IM/IT Specialist or Naval/Military Systems Specialist.	Location Halifax
---	----------------------------------------------------------------------------------------------------------------	--------------------------------------------------------------------------------------------------------------------------------------------------------------------------------------------------------------------------	------------------

Delete: ID 9 in its entirety

Insert: ID 9

N° de l'invitation - Solicitation No.
W8482-217850/F
N° de réf. du client - Client Ref. No.
W8482-217850

N° de la modif - Amd. No.
003
File No. - N° du dossier
027ism.W8482-217850

Id de l'acheteur - Buyer ID
027ism
N° CCC / CCC No./ N° VME - FMS

9	Knowledge of Naval Doctrine including development of tactics, requirements, concepts, software algorithms and solutions for Threat Evaluation, Engageability Assessment and Effector Management in the context of naval warfare operations, defence and security applications	Senior Engineer or Advanced Naval Warfare / Military Operations Specialist	Location Halifax
---	-------------------------------------------------------------------------------------------------------------------------------------------------------------------------------------------------------------------------------------------------------------------------------	----------------------------------------------------------------------------	------------------

Delete: ID 38 in its entirety

Insert: ID 38

38	Knowledge of network architecture, design, security, zoning, firewalls, secure interfaces between networks/systems	Senior IM/IT Specialist or Advanced IT Specialist	
----	--------------------------------------------------------------------------------------------------------------------	---------------------------------------------------	--

Delete: ID 45 in its entirety

Insert: ID 45

45	Knowledge of SAP Enterprise Information Systems including HANA, Plant Maintenance, Inventory Management/Master Record, Web Intelligence, Business Objects (BOBJ) for reports, KPIs, dashboards and analytics	Advanced IT Specialist	
----	--------------------------------------------------------------------------------------------------------------------------------------------------------------------------------------------------------------	------------------------	--

Delete: ID 60 in its entirety

Insert: ID 60

60	Knowledge of ship anti-biofouling systems operation, testing and evaluation	Intermediate Engineer or Intermediate Applied Science Specialist	Location NETE LaSalle
----	-----------------------------------------------------------------------------	------------------------------------------------------------------	-----------------------

At Annex G:

Delete: Annex G in its entirety

Insert: Annex G (see attachment)

D. Questions from the Industry:

Q.7 Minimum Guaranteed Throughput (MGT) Article 7.34 Para 3 (p.43 of 93)

In determining MGT, this states that "This amount must be based on the ratio of the current population of individuals qualified against all categories with the exception of the categories of General Labour and Clerical Support." As per the Financial Evaluation section (p. 86 of 93), a Clerical Support Labour Category has not been identified. Could Canada clarify which labour categories are to be excluded for purposes of MGT determination?

R.7 Only General Labour is excluded for purposes of MGT determination. The Clerical Support Labour is not used at this point.

Q.8 Basis of Payment – Work Element 3 Annex C Para 3.2 (p. 79 of 93)

This states that "During the first Contract year, the Work Element 3 payment will be made on the basis of Low Throughput, and will be adjusted, if necessary, at the beginning of the following Contract year. Thereafter, the Work Element 3 payment will be made on the basis of the level of throughput for the prior Contract year, and adjusted at the beginning of the following Contract year, if necessary." Could Canada confirm whether it intends to retroactively adjust the Work Element 3 payment for the first Contract year, based on the actual Throughput achieved during the first Contract year, upon completion of the first Contract year, if necessary? Or does Canada intend to use the actual Throughput of the first Contract year to set the Work Element 3 payment for the second Contract year, without retroactively adjusting the payments made in the first Contract year? If the latter case applies, could Canada confirm that there is still a need to have Bidders provide proposed Work Element 3 costs for Medium and High Throughput in Year 1, as per Table 2 of page 50 of 93, since the selected bidder will be paid in accordance with the Low Throughput cost proposal in Year 1, with no subsequent adjustments? To avoid any undue manipulation of Work Element 3 cost proposals by Bidders that could potentially be detrimental to Canada's interests in terms of the Bidder's commitment to fulfilling requirements under Work Element 3 of the Contract, would Canada consider requiring financial bids to include Low, Medium and High Throughput amounts which bear proportional relationships to each other?

R.8 Corrections have been made, please see modification in the Basis of Payment above and in Annex G.

Q.9 Mandatory Technical Criteria Evaluation M5.5 (p. 75 of 93)

The evaluation plan for Mandatory Requirement M5, Management Team Experience, lists the Quality System Manager as M5.2 and Facility Manager as M5.3. However, R.6 Additional Management Team Experience (p. 84 of 93) reverses the order with Facility Manager (R.6b) referring to M5.2 and Quality Systems Manager (R.6c) referring to M5.3. Further, R.6c evaluates up to five (5) additional years of experience, but the point rating would suggest that it should be up to three (3) additional years of experience, the same as for R.6b. Could Canada clarify the Rated Requirements for the Quality Systems Manager and Facility Manager in R.6?

R.9 Corrections have been made, please see Annex G.

Q.10 Mandatory Technical Criteria Evaluation M5.5 (p.77 of 93)

The experience requirement for the Combat Systems Manager under the Senior Engineer category is: *"have a minimum of eight (8) years of work experience in an engineering field related to operation, maintenance and testing of naval marine systems, with at least three (3) years of the eight (8) in the last five (5) years prior to bid closing."* Could Canada review this requirement and confirm that the work

experience for the Combat Systems Manager should be in an engineering field related to naval combat systems?

R. 10 Correction has been made, please see Annex G.

Q. 11 Point-Rated Technical Evaluation Criteria R.5 (p.83 of 93)

R.5 asks for a plan to demonstrate how each of the three (3) Work Elements of NETE's operations will be managed from Contract Effective Date. The Evaluation Plan states that the plan related to the three (3) Work Elements should be no more than ten (10) pages. The Statement of Work provides significant detail for the work to be done under each of the Work Elements. A maximum plan size for R.5 of 10 pages per Work Element would better enable the Bidder to properly address each Work Element of the SOW and would provide Canada with a better degree of assurance that Bidders have properly considered each Work Element. Would Canada consider requiring a 10-page maximum for each of the three Work Element plans?

R.11 Modification has been made, please see Annex G.

Q.12 Financial Evaluation, Financial Evaluation Section 3.1.1 Para 2 (p. 87 of 93)

This states that "An EXCEL Spreadsheet will be provided, upon request to the Contracting Authority, for validation of hourly rates." Could Canada provide bidders with said Spreadsheet?

R.12 Yes, the spreadsheet can be provided upon request to the Contracting Authority.

Q.13 Performance Measurement SOW Clause 47.6 (p.37 of 78)

Sub-clauses under SOW Clause 47.6 are incorrectly numbered as 46.6.1 and 46.6.2. Could Canada confirm this and correct as necessary?

R.13 Correction has been made, please see amendment above.

Q.14. NETE Business Continuity – Minimum Requirements SOW Appendix 4

The Labour Category requirement for Skill & Knowledge Requirement No. 1, Knowledge of Operational Test and Evaluation and Operational Analysis of Live Firings (Missiles and Torpedoes), asks for a "minimum of 8 individuals including at least one Naval or Military Systems Specialist in addition to 7 individuals with any combination of Senior Engineer and Senior IM/IT Specialist." Could Canada confirm that if the Bidder proposes more than one Naval or Military Systems Specialist, then the remainder of the 8 positions would have to be Senior Engineer or Senior IM/IT Specialist? For example, if the Bidder proposed 3 Naval or Military Systems Specialists, then the remaining 5 positions would have to be any combination of Senior Engineer or Senior IM/IT Specialist. Canada may wish to consider the following description under "Labour Category": *"minimum of 8 individuals including at least one Naval/Military Systems Specialist in addition to 7 individuals with any combination of Senior Engineer, Senior IM/IT Specialist or Naval/Military Systems Specialist."*

R.14 Modification has been made, please see amendment above.

Q.15 It is our interpretation that personnel must be identified to accommodate the 85 stated Skill Requirements as presented in SOW Appendix 4, in the quantities identified. As an example, Skill Requirement #1 indicates a requirement for 8 personnel of various labour categories. As such, up to 8 CVs have to be provided to fully accommodate this requirement – specifically one Naval or Military Systems Specialist and 7 individuals with any combination of Senior Engineer and Senior IM/IT Specialist.

It is also our understanding that a CV can be applied to only one of the 85 Skill Requirements. Using Skill Requirement #1 as an example, the 8 resumes provided must not be used to demonstrate compliance with any other Skill Requirement.

Question: A fully compliant response to Rated Requirement #3 requires the identification of 153 unique resources that will need to be approved within one of the 25 Labour Categories. Please confirm.

R.15 For R3, the stated breakdown of CVs to be submitted is accurate. However, given that this is a rated criterion and not a mandatory, it is not a matter of compliance vs non-compliance. All information stated in SOW Appendix 4 including specifications in the Skill/Knowledge description itself and in the additional information column will be used to assess the CVs being presented against the scoring descriptions of a given category as per the example provided in Annex G Para 2:

For point rated criteria R3, R4, R5, and R7, the descriptions [in Table 2 – Point Rated Technical Evaluation Criteria] will be used to determine the amount of points allotted to the rated criteria above. If an evaluator is hesitating between two word description categories, a score of the midpoint between categories is permissible. The word pictures will be applied considering the complete picture of the scored element. For example, in R3 (1) the score of the word picture will be multiplied by 115 factoring in all overall requirements holistically. Ex: Good = 60% therefore 0.60×115 points = 69 points allotted to the element.

Q.16 R3 states the scoring will be broken down in the 4 listed services for a total of 295 points

1. NETE core services -115 points
2. Combat Systems - 60 points
3. Information Systems – 60 points
4. Marine Systems – 60 points

In SOW - Appendix 4 states the requirement of 85 requirements are broken down into 5 sections:

Requirement for NETE core services - Based on NETE Business Continuity Plan Requirements
Field: Combat Systems
Field: Information Systems (IS)
Field: Marine Systems
Field: Test support and material management

Can you please confirm how the points will be allocated?

R. 16 The points have been re-allocated to include the field: Test support and material management. Please see Annex G.

Q.17 In SOW – Appendix 3 lists the mandatory requirements for each of the 25 Labour Categories Requirement. In SOW – Appendix 4 the following labour categories are not listed in the Appendix 3:

ID#9 - Labour Category – Advance Naval Doctrine Specialist
ID#38 - Labour Category – Advanced ITSEC Specialist
ID#45 - Labour Category – Advance IT SAP Specialist

R.17 Correction has been made, please see amendment above.

Q.18 SOW – Appendix 4 – ID#60 states “ *Intermediate Engineer or Applied Science Specialist*”
Please confirm that the level for the Applied Science Specialist is an intermediate level.

R.18 Correction has been made, please see amendment above.

Q.19 R.6 Additional Management Team Experience (c) states Quality Systems Manager “*In excess of Mandatory Requirement M.5.3.1, three (3) points will be awarded per year of experience up to a maximum of five (5) additional years*” for 9 points

Please confirm if this requirement should read “*three (3) points will be awarded per year of experience up to a maximum of **three (3)** additional years* for 9 points” OR
three (3) points will be awarded per year of experience up to a maximum of five (5) additional years” for **15** points

R.19 Corrections have been made, please see Annex G.

Q.20 Amendment 002 Section 3.1

Section IV - Additional Information of the Bid Submission

The amendment replaced all of Section 3.1 to remove Section IV, Additional Information, of the Bid submission. Request for Proposal (RFP) Article 5.2.5, Additional Information Required with the Bid, requests a list of Bidder Team Members. Could Canada confirm that this information is still required and if the information can be submitted as part of Section III, Certifications?

R.20 Yes, this information is still required and must be provided as part of Section III, Certifications.

Q.21 Point-Rated Technical Evaluation Criteria R.2 (p. 81 of 93)

Corporate Technical Experience The evaluation plan for R.2, Corporate Technical Experience, allows up to three (3) projects performed by the bidder within the last eight (8) years to demonstrate experience in a sub-function. The evaluation plan states that “The project(s) only need to be sufficiently described to clearly show corporate experience associated to a specific subfunction and the project’s description must be limited to half a page”. Could Canada confirm that the summary for each project may be up to half a page, so if three projects are used for one sub-function a total of 1½ pages is allowed?

R.21 Yes, each project may be up to half a page each, so if three projects are used for one sub-function a total of 1½ pages is allowed.

Q.22 SOW – Appendix 4 ID 9 (p. 67 of 78)

This requirement addresses Knowledge of Naval Doctrine including development of tactics, requirements, concepts, software algorithms and solutions for Threat Evaluation, Engageability Assessment and Effector Management in the context of naval warfare operations, defence and security applications. The requirement asks for a person qualified as a Senior Engineer or Advanced Naval Doctrine Specialist.

N° de l'invitation - Solicitation No.

W8482-217850/F

N° de réf. du client - Client Ref. No.

W8482-217850

N° de la modif - Amd. No.

003

File No. - N° du dossier

027ism.W8482-217850

Id de l'acheteur - Buyer ID

027ism

N° CCC / CCC No./ N° VME - FMS

There is no Advanced Naval Doctrine Specialist in the contract labour categories in SOW Appendix 3, (p. 48 of 78). Could Canada confirm that an individual qualified as an Advanced Naval Warfare/Military Operations Specialist would fulfill this Skill/Knowledge Requirement?

R.22 Corrections have been made, please see amendment above.

All other terms and conditions remain unchanged.

N° de l'invitation - Solicitation No.
W8482-217850/F
N° de réf. du client - Client Ref. No.
W8482-217850

N° de la modif - Amd. No.
File No. - N° du dossier
027ism.W8482-217850

Id de l'acheteur - Buyer ID
027ism
N° CCC / CCC No./ N° VME - FMS

ANNEX G

Technical and Financial Evaluation Criteria

1. Mandatory Technical Criteria Evaluation
2. Point Rated Technical Evaluation Criteria
3. Financial Evaluation

Appendix I Resume Format (Curriculum Vitae (CV))

N° de l'invitation - Solicitation No.
W8482-217850/F
N° de réf. du client - Client Ref. No.
W8482-217850

N° de la modif - Amd. No.
File No. - N° du dossier
027ism.W8482-217850

Id de l'acheteur - Buyer ID
027ism
N° CCC / CCC No./ N° VME - FMS

Definition of Bidder Team Members for evaluation of Experience

For the purposes of Evaluation of Experience for Mandatory Technical Criteria M3 Corporate Experience and the Point Rated criteria, any member of the Bidder's Team can be used to meet the mandatory and point rated technical evaluation criteria. The Bidder Team includes the Bidder and any subcontractors named in the Bid. The Bidder must fully disclose the names and roles of each member of the Bidder's Team and may submit experience obtained by each named member of the Bidder's Team to fulfil the evaluation requirements. The Bidder must, upon request from the Contracting Authority, provide the written confirmation from each subcontractor that is a member of the Bidder's Team named in the bid, that such named subcontractor has a written commitment with the Bidder to enter into a subcontract to perform work pursuant to the terms of the Bidder's Bid and this RFP.

EXAMPLE

A bidder having a bidder team consisting of members X, Y and Z. If a bid solicitation requires: (a) that one of the bidder team members have 3 years of experience providing maintenance service, and (b) that one of the bidder team members have 2 years of experience integrating hardware with complex networks, then each of these two requirements can be met by a different member of the bidder team. However, for a single criterion, such as the requirement for 3 years of experience providing maintenance services, the bidder cannot indicate that each of members X, Y and Z has one year of experience, totaling 3 years. Such a response would be declared non-responsive.

N° de l'invitation - Solicitation No.

W8482-217850/F

N° de réf. du client - Client Ref. No.

W8482-217850

N° de la modif - Amd. No.

File No. - N° du dossier

027ism.W8482-217850

Id de l'acheteur - Buyer ID

027ism

N° CCC / CCC No./ N° VME - FMS

1. Mandatory Technical Criteria Evaluation

The Phased Bid Compliance Process will apply to all mandatory technical criteria.

The Bidder (Bidder Team Members) must comply with ALL mandatory technical criteria and requirements as outlined in the Table 1 below. Proposals failing to meet the mandatory technical evaluation criteria will be considered non-compliant and excluded from further consideration.

In order to facilitate the evaluation, the Bidder should refer to the supporting documents within their technical proposal, with the exact page number(s) and paragraph number(s) where the required substantiation can be found.

Bidders are advised that only listing experience without providing any supporting documents/information to describe responsibilities, duties and relevance to the requirements, or simply repeating the statement contained in the RFP, is not sufficient for the purpose of this evaluation. The bidder must provide complete details as to where (city/country), when (year), and how (through which activities/responsibilities), the stated qualifications/experience were obtained.

N° de l'invitation - Solicitation No.
W8482-217850/F
N° de réf. du client - Client Ref. No.
W8482-217850

N° de la modif - Amd. No.
File No. - N° du dossier
027ism.W8482-217850

Id de l'acheteur - Buyer ID
027ism
N° CCC / CCC No./ N° VME - FMS

Table 1 - Mandatory Technical Evaluation Criteria

Item Number	Mandatory Technical Evaluation Criteria	Proposal Pages #
M1 Canadian Corporation	<p>The Bidders must be a Canadian Corporation in accordance with Section 89 of the Canadian Income Tax Act.</p> <p>Evidence Required:</p> <p>The Bidder must provide a proof of Canadian business registration, partnership agreement or article(s) of incorporation.</p>	
M2 Corporate Experience	<p>The Bidder must have experience in managing at least one (1) service contract within Canada, valued at \$20M or more within the last five (5) years, prior to the bid closing date.</p> <p>Evidence Required:</p> <p>The Bidder must submit a summary providing contract details, including contract number, contract award date, contract value and scope of work.</p>	
M3 Corporate Experience	<p>The Bidder must have experience conducting Test and Evaluation (T&E) and Independent Verification and Validation (IV&V) work on complex equipment. The Bidder must have carried out a combination of at least five (5) T&E and IV&V projects or tasks for a combined total value of at least \$5M, within the past five (5) years, prior to bid closing date.</p> <p>Evidence Required:</p> <p>The Bidder must provide a description of:</p> <ol style="list-style-type: none">1) T&E and IV&V services; and2) Five (5) projects or task summaries for T&E and IV&V work carried out, including the value of each project or task and the start and end date for each project or task.	
M4 Quality Management System	<p>The Bidder must operate a Quality Management System compliant with the most recent ISO 9001 standard.</p> <p>Evidence Required:</p> <p>The Bidder must provide a copy of its current Certificate(s) of Registration for the ISO 9001 Quality Management System.</p>	

<p>M5 Management Team Experience</p>	<p>The Bidder must propose resources for the Key Personnel of the Management Team for each of the required category of personnel listed below:</p> <ol style="list-style-type: none"> 1. Site Manager 2. Quality System Manager 3. Facility Manager 4. Marine Systems Section Head Manager 5. Combat Systems Section Head Manager 6. Information & Communication Systems Manager <p>Qualifications for each of the Key Personnel are described in the tables below: Technical Mandatory Resources Requirements.</p> <p>Evidence Required: The Bidder must provide a detailed Curriculum Vitae using Appendix I with one (1) unique qualified candidate for each of the required category of personnel. The Bidder must include proof of certification and details for the qualifications or education being claimed. Examples of adequate substantiation include the name of the person, the name of the project (if applicable), the name of the company, period, and description of the work, location of the work, for each claim of experience or copies or evidence of qualifications, certificates, or degrees.</p> <p>Bidders must provide specific dates for each period of qualifying continuous service. Each period of continuous service will be counted separately. One (1) month of qualifying service is defined as one complete calendar month. Any partial months of qualifying service may be credited. A partial month is defined as the month at the beginning or end of the qualifying period. To obtain one (1) month's qualifying credit, the sum of the total days of service for the partial months must be between 28 days and 55 days (inclusive), and to obtain two (2) months qualifying credit, the sum of the total days of service for the partial months must be equal to 56 days or greater. Less than 28 days will receive no credit for qualifying service.</p> <p>Experience gained during formal education will not be considered work experience. All requirements for work experience must be obtained in a legitimate work environment as opposed to an educational setting.</p> <p>Co-op terms are considered work experience provided they are related to the required services.</p> <p>The proposed individual must be an employee of the Bidder, or have entered into an agreement with the Bidder to become an employee of the Bidder for the purpose of any Contract that results from this RFP, and the Bidder must supply evidence of this upon request of the Contracting Authority.</p>	
-----------------------------------------------------	-----------------------------------------------------------------------------------------------------------------------------------------------------------------------------------------------------------------------------------------------------------------------------------------------------------------------------------------------------------------------------------------------------------------------------------------------------------------------------------------------------------------------------------------------------------------------------------------------------------------------------------------------------------------------------------------------------------------------------------------------------------------------------------------------------------------------------------------------------------------------------------------------------------------------------------------------------------------------------------------------------------------------------------------------------------------------------------------------------------------------------------------------------------------------------------------------------------------------------------------------------------------------------------------------------------------------------------------------------------------------------------------------------------------------------------------------------------------------------------------------------------------------------------------------------------------------------------------------------------------------------------------------------------------------------------------------------------------------------------------------------------------------------------------------------------------------------------------------------------------------------------------------------------------------------------------------------------------------------------------------------------------------------------------------------------------------------------------------------------------------------------------------------------------------------------------------------------------------------------------------------------------------------------------------------------------------------------------------------------------------------------------------------------------------------------------------------------------------------------------------------------------------------------------------------------------------------------------------------------------------	--

N° de l'invitation - Solicitation No.
W8482-217850/F
N° de réf. du client - Client Ref. No.
W8482-217850

N° de la modif - Amd. No.
File No. - N° du dossier
027ism.W8482-217850

Id de l'acheteur - Buyer ID
027ism
N° CCC / CCC No./ N° VME - FMS

Technical Mandatory Resource Requirements

1. Site Manager	
Description of the requirement	Proposal Pages #
The Bidder's proposed Site Manager must meet each of the following criteria:	
1. have at least five (5) years experience, prior to bid closing, in a managerial capacity applicable to a technical organization of similar size and complexity as NETE;	
2. have at least five (5) years, prior to bid closing, experience with project management; and	
3. have at least five (5) years, prior to bid closing, experience with or in the Defence Industry.	

2. Quality System Manager	
Description of the requirement	Proposal Pages #
The Bidder's proposed Quality System Manager must meet the following criterion:	
1. have experience being responsible for the implementation and operation of a Quality Management System to the ISO 9001:2015 standard or recognized equivalent for a five (5)-year period in the past eight (8) years, prior to bid closing.	

3. Facility Manager	
Description of the requirement	Proposal Pages #
The Bidder's proposed Facility Manager must meet the following criterion:	
1. have at least five (5) years of experience, prior to bid closing, in the management and supervision of facility maintenance and support activities of similar size and complexity to that of NETE;	

N° de l'invitation - Solicitation No.
W8482-217850/F
N° de réf. du client - Client Ref. No.
W8482-217850

N° de la modif - Amd. No.
File No. - N° du dossier
027ism.W8482-217850

Id de l'acheteur - Buyer ID
027ism
N° CCC / CCC No./ N° VME - FMS

4. Marine Systems Section Head Manager	
Description of the requirement	Proposal Pages #
The Bidder's proposed Marine Systems Section Head Manager must meet each of the criteria listed for one of the Naval System Specialist – OR - Senior Engineer categories:	
<u>Naval System Specialist</u>	
1. have a minimum of eight (8) years of work experience in each of operation, maintenance and testing of naval marine systems, with at least three (3) years of the eight (8) in the last five (5) years prior to bid closing;	
2. have a minimum of three (3) years, prior to bid closing, of supervisory experience within the last ten (10) years	
3. have a university undergraduate degree or a diploma in a related field from a three (3) year college or technical institute program.	
4. have military training through any Canadian Armed Forces Classification, including but not limited to Naval Technical Officer, Naval Warfare Officer, Pilot, Air Navigator, Air Traffic/Weapons Controller, Military Engineer, Communications & Electrical Engineer and Clearance Diver; or equivalent.	
- OR -	
<u>Senior Engineer</u>	
1. have a minimum of eight (8) years of work experience in an engineering field related to operation, maintenance and testing of naval marine systems, with at least three (3) years of the eight (8) in the last five (5) years prior to bid closing;	
2. have a minimum of three (3) years, prior to bid closing, of supervisory experience within the last ten (10) years and	
3. have an undergraduate degree in engineering, or eligibility for registration as a professional engineer in any province in Canada.	

N° de l'invitation - Solicitation No.
W8482-217850/F
N° de réf. du client - Client Ref. No.
W8482-217850

N° de la modif - Amd. No.
File No. - N° du dossier
027ism.W8482-217850

Id de l'acheteur - Buyer ID
027ism
N° CCC / CCC No./ N° VME - FMS

5. Combat Systems Section Head Manager	
Description of the requirement	Proposal Pages #
The Bidder's proposed Combat Systems Section Head Manager candidate must meet each of the criteria listed for one of the Naval System Specialist – OR - Senior Engineer categories:	
<u>Naval System Specialist</u>	
1. have a minimum of eight (8) years of work experience in each of operation, maintenance and testing of naval marine systems , with at least three (3) years of the eight (8) in the last five (5) years;	
2. have a minimum of three (3) years of supervisory experience within the last ten (10) years;	
3. have a university undergraduate degree or a diploma in a related field from a three (3) year college or technical institute program.	
4. have military training through any Canadian Armed Forces Classification, including but not limited to Naval Technical Officer, Naval Warfare Officer, Pilot, Air Navigator, Air Traffic/Weapons Controller, Military Engineer, Communications & Electrical Engineer and Clearance Diver; or equivalent.	
- OR -	
<u>Senior Engineer</u>	
1. have a minimum of eight (8) years of work experience in an engineering field related to operation, maintenance and testing of naval combat systems, with at least three (3) years of the eight (8) in the last five (5) years prior to bid closing;	
2. have a minimum of three (3) years of supervisory experience in total within the last ten (10) years; and	
3. have an undergraduate degree in engineering, or eligibility for registration as a professional engineer in any province in Canada.	

6. Information & Communication Systems Manager	
Description of the requirement	Proposal Pages #
The Bidder's proposed Information & Communication Systems Manager must meet each of the criteria listed for one of the Senior IT/IM Specialist – OR - Senior Engineer categories:	
Senior IM/IT Specialist	
The Senior IT/IM Specialist must meet one (1) of the five (5) groups of criteria:	
1 a) have three (3) years of work experience in a related IM/IT support field within the last six (6) years prior to bid closing; and b) have a university post graduate degree in computer engineering or computer science; or	
2 a) have five (5) years of work experience in a related IM/IT support field within the last seven (7) years prior to bid closing; and b) have a university undergraduate degree in computer engineering or computer science; or	
3 a) have six (6) years of work experience in a related IM/IT support field within the last then (10) years prior to bid closing; and b) have two (2) year College level certificate in computer science or equivalent; or	
4 a) have six (6) years or work experience in a related IM/IT support field within the last ten (10) years prior to bid closing; and b) have successful completion of an IM/IT course with a minimum of six hundred (600) hours of instruction and assignments; or	
5 a) have ten (10) years of work experience in a related IM/IT support field within the last fifteen (15) years prior to bid closing.	
- OR -	
Senior Engineer	
1. have (8) years of experience in an engineering field of which five (5) years have been within the last ten years prior to bid closing;	
2. have a minimum of three (3) years of supervisory experience within the last ten (10) years and	
3. Have an undergraduate degree in engineering, or eligibility for registration as a professional engineer in any province in Canada.	

2. Point-Rated Technical Evaluation Criteria

This solicitation contains point-rated requirements as outlined in Table 2 – Point Rated Technical Evaluation Criteria below. Bidders must achieve a minimum score of 40% for each criteria and a minimum of 600 points out of 1000 overall on their point-rated criteria. Bids that do not have the minimum scores will be declared non-responsive and will be given no further consideration.

Two (2) decimal places will be maintained through the calculations. Scores will be rounded up to two (2) decimals places.

Rating Guideline for Point Rated Criteria R3, R4, R5, and R7.

For point rated criteria R3, R4, R5, and R7, the descriptions below will be used to determine the amount of points allotted to the rated criteria above. If an evaluator is hesitating between two word description categories, a score of the midpoint between categories is permissible. The word pictures will be applied considering the complete picture of the scored element.

For example, in R3 (1) the score of the word picture will be multiplied by 115 factoring in all overall requirements holistically. Ex: Good = 60% therefore 0.60×115 points = 69 points allotted to the element.

Points	Quality	Explanation
100%	Excellent	The proposal fully meets all requirements. There are no apparent weaknesses in the solution that would affect the successful achievement of the work associated with this criteria element. The perceived risks to NETE business continuity are negligible.
80%	Very Good	The proposal adequately all requirements. There are minor weaknesses in the solution which are unlikely to adversely affect the successful achievement of the work associated with this criteria element. The perceived risks to NETE business continuity are low.
60%	Good	The proposal meets most of the requirements. There are minor deficiencies in the solution which may affect the successful achievement of the work associated with this criteria element or the evidence provided is either weak or lacking. These weaknesses have a moderate chance of affecting the successful achievement of the work associated with this criteria element. The identified weaknesses are correctable, but may potentially affect the successful achievement of the work associated with this criteria element. These weaknesses introduce medium risks that may adversely affect NETE's business continuity.
40%	Satisfactory	The proposal meets most of the requirements with some notable deficiencies or insufficient evidence presented regarding how the requirements will be met. There is a high level of perceived risks in the solution which may be a challenge to overcome, and which will likely affect the successful achievement of the work associated with this criteria element. These weaknesses introduce high risks that may adversely affect NETE's business continuity.
20%	Inadequate	The proposal falls below a minimum acceptable level. There are weaknesses in the solution which would be difficult to resolve and present intolerable risk levels to the successful completion of business outcomes.
0%	Poor	The proposal falls significantly below the minimum acceptable level. There are weaknesses in the solution which are unlikely to be resolved and which will significantly affect the successful achievement of the work associated with this criteria element. These weaknesses will adversely affect the project schedule, cost or scope.

No.	Technical Criteria	Max Points
R.1 Organization Approach	<p>The Bidder should provide an organizational chart demonstrating, supported by a description and any amplifying remarks, depicting their proposed organization of the NETE workforce to as described at Section 4, Article 37 of the SOW.</p> <p>This chart should include each of the following elements:</p> <ul style="list-style-type: none"> a. Management Team including: <ul style="list-style-type: none"> • Site Manager /2 • Facility Manager /2 • Quality Systems Manager /2 • Marine Systems Manager /2 • Combat Systems Manager /2 • Information and Communication Systems Manager /2 b. Managerial functions and support activities including: <ul style="list-style-type: none"> ▪ Human Resources /2 • Accounting / Financial /2 • General Administration /2 c. Include a description of the organizational approach for the Managers and the support activities including how to integrate teams working in different functional and geographical areas /2 	/20

<p>R.2 Corporate Technical Experience</p>	<p>Corporate Technical Experience</p> <p>The Bidder should demonstrate its corporate experience in each of the sub-functions for each of the nine (9) Test & Evaluation Functions described at Section 2, Article 9 of the SOW.</p> <p>For each sub-function, the corporate experience should be demonstrated by providing a summary of at least one (1), but up to three (3) project(s) performed by the Bidder within the last eight (8) years. The project(s) only need to be sufficiently described to clearly show corporate experience associated to a specific sub-function and the project's description must be limited to half a page.</p> <p>Submitting the same project to fulfil multiple a sub-function in a function is permissible, however, may be considered as a lack of breadth or depth of experience and be factored into the scoring.</p> <p>For this Rated Requirement, providing employees' resumes will not be considered an acceptable form of demonstrating corporate experience.</p> <p>Two (2) points per year of corporate experience will be awarded, up to eight (8) points per sub-function.</p> <p>Functions:</p> <ul style="list-style-type: none"> a. Evaluation of the ability of materiel to meet DND requirements – 7 sub-functions at SOW 9.1.1 b. Conduct and development of trials – 4 sub-functions at SOW 9.1.2 c. Evaluation of Design Changes – 3 sub-functions at SOW 9.1.3 d. Conduct of Equipment, Systems and Software Audits / IV&V – 5 sub-functions at SOW 9.1.4 e. Data Recording, Reduction and Analysis – 5 sub-functions at SOW 9.1.5 f. Problem Investigation and Analysis – 6 sub-functions s at SOW 9.1.6 g. Support to designated Ranges – 3 sub-functions at SOW 9.1.7 h. Support to Innovation Projects – 1 sub-function at SOW 9.1.8 i. Support of Materiel Processes – 2 sub-functions at SOW 9.1.9 	<p>/56</p> <p>/32</p> <p>/24</p> <p>/40</p> <p>/40</p> <p>/48</p> <p>/24</p> <p>/8</p> <p><u>/16</u></p> <p>288</p>
-------------------------------------------------------------	-----------------------------------------------------------------------------------------------------------------------------------------------------------------------------------------------------------------------------------------------------------------------------------------------------------------------------------------------------------------------------------------------------------------------------------------------------------------------------------------------------------------------------------------------------------------------------------------------------------------------------------------------------------------------------------------------------------------------------------------------------------------------------------------------------------------------------------------------------------------------------------------------------------------------------------------------------------------------------------------------------------------------------------------------------------------------------------------------------------------------------------------------------------------------------------------------------------------------------------------------------------------------------------------------------------------------------------------------------------------------------------------------------------------------------------------------------------------------------------------------------------------------------------------------------------------------------------------------------------------------------------------------------------------------------------------------------------------------------------------------------------------------------------------------------------------------------------------------------------------------------------------------------------------------------------------------------------------------------	-------------------------------------------------------------------------------------------------------------------------------------------------------------------------------------------

<p>R.3 Business Continuity Resources</p>	<p>The Bidder should propose at least one (1) additional resource for each of the requirements listed in SOW Appendix 4, up to the total number required for each skill/knowledge requirement. These additional resources are to address NETE's business continuity requirements and represent the minimum expected initial workforce at the Contract Effective Date.</p> <p>For this requirement, the bidder will demonstrate its compliance by providing a series of Curriculum Vitae (CV) using the form at Appendix I.</p> <p>The Bidder will demonstrate how it will fulfil each additional resource requirement by providing a spreadsheet that maps which CV is being applied to which requirement.</p> <p>The rating guideline will be applied based on the overall ability to address the overall requirements in each business continuity requirement area as follows:</p> <ol style="list-style-type: none"> 1. NETE core services 2. Combat Systems 3. Information Systems 4. Marine Systems 5. Test support and material management <p>Each CV provided may only be utilized against one additional resource requirement.</p> <p>The content of each CV should demonstrate how that additional resource fulfils the applicable prerequisites stated in SOW Appendix 4.</p> <p>Resources proposed for Mandatory Core Resources are not eligible to be used as additional resources for this point rated criteria.</p>	<p>/115</p> <p>/55</p> <p>/55</p> <p>/55</p> <p>/15</p> <p>/295</p>
<p>R.4 Transition Plans</p>	<p>The Bidder should provide detailed Transition Plans as defined in Section 4, Article 49 of the SOW.</p> <p>The rating guideline will be applied based on the overall ability to address the overall requirements in each plan as follows:</p> <ol style="list-style-type: none"> a. Human Resources and Transition Staffing Plan b. Personnel, Site and Information Security Plan c. Capital and Materiel Acquisition, Control and Custody Plan d. Health and Safety, Environmental and Fire Protection Plan e. Quality Management System Plan <p>Each transition plan should be no more than ten (10) pages.</p>	<p>/100</p> <p>/10</p> <p>/10</p> <p>/10</p> <p>/10</p> <p>/140</p>

R.5 Management of the three (3) Work Elements	<p>The Bidder should propose a plan which should demonstrate how each of the three (3) Work Element of NETE's operations will be managed from Contract Effective Date onward in a manner that will maximize business operations at NETE.</p> <p>The plan should address the following Elements:</p> <ul style="list-style-type: none">a. WE1 – Contractor ready to accept, conduct and deliver T&E work on Contract Effective Date (SOW Section 2);b. WE2 – Contractor ready to implement Maintenance & Support Plan on Contract Effective Date (SOW Section 3);c. WE3 – Contractor ready to manage all aspects of NETE operations on Contract Effective Date (SOW Section 4). <p>The plan should include a proposed breakdown for each of the following elements:</p> <ul style="list-style-type: none">• staffing and training• knowledge transfer• change management• scheduling• communications and reporting <p>The plan related to the three (3) Work Elements should be no more than ten (10) pages for each of the three (3) Work Elements for a total of 30 pages.</p>	<p>/50</p> <p>/50</p> <p><u>/50</u></p> <p>/150</p>
------------------------------------------------------	----------------------------------------------------------------------------------------------------------------------------------------------------------------------------------------------------------------------------------------------------------------------------------------------------------------------------------------------------------------------------------------------------------------------------------------------------------------------------------------------------------------------------------------------------------------------------------------------------------------------------------------------------------------------------------------------------------------------------------------------------------------------------------------------------------------------------------------------------------------------------------------------------------------------------------------------------------------------------------------------------------------------------------------------------------------------------------------------------------------------------------------------------------------------------------	---------------------------------------------------------------------------------

<p>R.6 Additional Management Team Experience</p>	<p>The Bidder should demonstrate the Management Team experience over and above the minimum required in the CVs provided in response to M5 Management Team Experience.</p> <p>a. Site Manager In excess of Mandatory Requirement M.5.1.1, up to three (3) points will be awarded per year of experience up to a maximum of three (3) additional years.</p> <p>In excess of Mandatory Requirement M.5.1.2, up to three (3) points will be awarded per year of experience up to a maximum of three (3) additional years.</p> <p>In excess of Mandatory Requirement M.5.1.3, up to three (3) points will be awarded per year of experience up to a maximum of three (3) additional years.</p> <p>b. Quality Systems Manager In excess of Mandatory Requirement M.5.2.1, three (3) points will be awarded per year of experience up to a maximum of three (3) additional years.</p> <p>c. Facility Manager In excess of Mandatory Requirement M.5.3.1, three (3) points will be awarded per year of experience up to a maximum of three (3) additional years.</p> <p>d. Marine Systems Manager In excess of Mandatory Requirement M.5.4.1, one (1) point will be awarded per year of work experience up to a maximum of five (5) additional years.</p> <p>In excess of Mandatory Requirement M.5.4.2, one (1) point will be awarded per year of supervisory experience up to a maximum of five (5) additional years.</p> <p>e. Combat Systems Manager In excess of Mandatory Requirement M.5.5.1, one (1) point will be awarded per year of work experience up to a maximum of five (5) additional years.</p> <p>In excess of Mandatory Requirement M.5.5.2, one (1) point will be awarded per year of supervisory experience up to a maximum of five (5) additional years.</p> <p>f. Information & Communication Systems Manager In excess of Mandatory Requirement M.5.6.1, one (1) point will be awarded per year of work experience up to a maximum of five (5) additional years.</p> <p>In excess of Mandatory Requirement M.5.6.2, one (1) point will be awarded per year of supervisory experience up to a maximum of five (5) additional years.</p>	<p>/9</p> <p>/9</p> <p>/9</p> <p>/9</p> <p>/5</p> <p>/5</p> <p>/5</p> <p>/5</p> <p><u>/5</u></p> <p><u>/75</u></p>
--------------------------------------------------	------------------------------------------------------------------------------------------------------------------------------------------------------------------------------------------------------------------------------------------------------------------------------------------------------------------------------------------------------------------------------------------------------------------------------------------------------------------------------------------------------------------------------------------------------------------------------------------------------------------------------------------------------------------------------------------------------------------------------------------------------------------------------------------------------------------------------------------------------------------------------------------------------------------------------------------------------------------------------------------------------------------------------------------------------------------------------------------------------------------------------------------------------------------------------------------------------------------------------------------------------------------------------------------------------------------------------------------------------------------------------------------------------------------------------------------------------------------------------------------------------------------------------------------------------------------------------------------------------------------------------------------------------------------------------------------------------------------------------------------------------------------------------------------------------------------------------------------------------------------------------------------------------------------------------------------------------------------------------------------------------------------------------------------------------------------------------------------------------------------------------------------------------------------------------------	--------------------------------------------------------------------------------------------------------------------

N° de l'invitation - Solicitation No.

W8482-217850/F

N° de réf. du client - Client Ref. No.

W8482-217850

N° de la modif - Amd. No.

File No. - N° du dossier

027ism.W8482-217850

Id de l'acheteur - Buyer ID

027ism

N° CCC / CCC No./ N° VME - FMS

R.7 Incentive Plan	<p>The Bidder should propose an Incentive Plan which meets the requirements set out in the SOW at Article 47. The proposed Incentive Plan may take the form of a scoring scheme, formula, matrix, chart, etc. or any combination thereof. It should address the following performance measures:</p> <ol style="list-style-type: none">1. Cost2. Schedule3. Quality4. Overall Performance <p>The Incentive Plan should be no more than ten (10) pages.</p>	<p>/8</p> <p>/8</p> <p>/8</p> <p><u>/8</u></p> <p>/32</p>
--------------------	-----------------------------------------------------------------------------------------------------------------------------------------------------------------------------------------------------------------------------------------------------------------------------------------------------------------------------------------------------------------------------------------------------------------------------------------------------------------------------------------------------------	------------------------------------------------------------------

3. Financial Evaluation

Bidders must provide their Financial Bid by completing the Attachment 1 to Part 4 – Financial Bid Presentation Sheet. The Financial Bid must include each of the following two Financial Elements:

1. Bidders must provide All-Inclusive Hourly Labour Rate for each personnel category in accordance with the Labour Categories Requirement specified in SOW Appendix 3 for the first two (2) years of the initial contract period. The All-Inclusive Hourly Labour Rate is for Work performed by the Contractor and must include the cost of direct labour, overhead, general and administrative costs (G&A) and profit. The All-Inclusive Hourly Labour Rate must include no more than two (2) decimal places.
2. Bidders must provide Management Fee, the firm Annual Management Fee for the first two (2) years of the initial five (5) year contract period. The Management Fee includes, as a minimum, the following resources: Site Manager, Quality System Manager, Facility Manager, Health and Safety, Hazardous Materiel and Environmental Specialist(s), the three (3) Section Head Managers (Marine Systems Section Head Manager, Combat Systems Section Head Manager and Information & Communication Systems Manager) and any additional support resources the Bidder deems necessary. These resources must not charge any of their time to Work Elements 1 or 2, their efforts must be covered under Work Element 3.

The submitted rates for the specific Financial Elements will be firm for the first two (2) years of the contract period and will be in effect at Contract Award.

1.1 Financial Element Evaluation Methodology

3.1.1 All-Inclusive Hourly Labour Rates for Work Element 1 & 2.

Bidders must submit all-Inclusive Hourly Labour Rates for each labour category to a maximum of two decimal places in Table 2 below.

To reduce the likelihood of unusually low Labour rates, Canada requires the Bidder to provide All-Inclusive Hourly Labour Rate for each Labour Categories that will meet specific criteria when compared to the more senior Labour Category average (mean) rate just above in their respective Category Group. The average for each Labour Category will be calculated using the two (2) years of All-Inclusive Hourly Rates submitted in Table 3 below. Meeting these criteria will be mandatory. The following Category Groups have been created on for the purposes of the evaluation:

Category Groups	Labour Categories
Group A	<ul style="list-style-type: none"> • Senior Applied Science Specialist • Intermediate Applied Science Specialist • Junior Applied Science Specialist • Entry Level Applied Science Specialist
Group B	<ul style="list-style-type: none"> • Senior Engineer • Intermediate Engineer • Junior Engineer • Entry Level Engineer
Group C	<ul style="list-style-type: none"> • Senior IM/IT Specialist • Intermediate IM/IT Specialist • Junior IM/IT Specialist • Entry Level IM/IT Specialist

N° de l'invitation - Solicitation No.
W8482-217850/F
N° de réf. du client - Client Ref. No.
W8482-217850

N° de la modif - Amd. No.
File No. - N° du dossier
027ism.W8482-217850

Id de l'acheteur - Buyer ID
027ism
N° CCC / CCC No./ N° VME - FMS

Group D	<ul style="list-style-type: none">• Technician• Entry Level Technician
Group E	<ul style="list-style-type: none">• Technologist• Entry Level Technologist
Group F	<ul style="list-style-type: none">• General Labour• IT Tester• Network Administrator• Trade Categories• Advance IT Specialist• Advance Naval Warfare/Military Operations Specialist• Naval/Military Systems Specialist• CO-OP Student• Technical Specialist

1. Criteria for Category Group A to Group E inclusively:

The Bidder must have an average (mean) rate for the second Labour Category in the Category Group within -10 % and -35% of the average (mean) rate of the more senior Labour Category in the same Category Group. The Bidder must also have an average (mean) rate for the third Labour Category in the Category Group within -10% and -35% of the average (mean) rate of the second Labour Category in the Category Group and so on and so forth for all the labour category in the same group.

For example:

For Group A, the Bidder must have an average (mean) rate for the Intermediate Applied Science Specialist that will be within -10% and -35% of the average (mean) rate of Senior Applied Science Specialist.

The Bidder must have an average (mean) rate for the Junior Applied Science Specialist that will be within -10% and -35% of the average (mean) rate of Intermediate Applied Science Specialist.

The Bidder must have an average (mean) rate for the Entry Level Applied Science Specialist that will be within -10% and -35% of the average (mean) rate of the Junior Applied Science Specialist.

2. Criteria for Category Group F

The Labour Rate for CO-OP Student and General Labour must be the lowest rates for Category Group F. There is no rule regarding which one should be the lowest as long as the other Labour rates in that Category Group F are higher.

(An EXCEL Spreadsheet will be provided, upon request to the Contracting Authority, for validation of hourly rates.) The Bidder is responsible to review and confirm that all rates are accurate.

The weighting provided in Table 3 below is based on estimation for future year demands and is used for information purposes only and is not binding on Canada.

N° de l'invitation - Solicitation No.
W8482-217850/F
N° de réf. du client - Client Ref. No.
W8482-217850

N° de la modif - Amd. No.
File No. - N° du dossier
027ism.W8482-217850

Id de l'acheteur - Buyer ID
027ism
N° CCC / CCC No./ N° VME - FMS

Table 3 Financial Bid Presentation Sheet

Code	Labour Categories	Estimated hours per year	Year 1 firm All-Inclusive Hourly Rate	Year 2 firm All-Inclusive Hourly Rate	(Estimated hours X Rate Year 1) + (Estimated hours X Rate Year 2)
1	Senior Applied Science Specialist	16000	\$	\$	
2	Intermediate Applied Science Specialist	6000	\$	\$	
3	Junior Applied Science Specialist	4000	\$	\$	
4	Entry level Applied Science Specialist	2000	\$	\$	
5	Senior Engineer	120000	\$	\$	
6	Intermediate Engineer	40000	\$	\$	
7	Junior Engineer	20000	\$	\$	
8	Entry Level Engineer	10000	\$	\$	
9	IT Tester	10000	\$	\$	
10	Advance Naval Warfare/Military Operations Specialist	10000	\$	\$	
11	Naval/Military Systems Specialist	50000	\$	\$	
12	Network Administrator	10000	\$	\$	
13	Advanced IT Specialist	20000	\$	\$	
14	Senior IM/IT Specialist	80000	\$	\$	
15	Intermediate IM/IT Specialist	40000	\$	\$	

N° de l'invitation - Solicitation No.
W8482-217850/F
N° de réf. du client - Client Ref. No.
W8482-217850

N° de la modif - Amd. No.
File No. - N° du dossier
027ism.W8482-217850

Id de l'acheteur - Buyer ID
027ism
N° CCC / CCC No./ N° VME - FMS

16	Junior IM/IT Specialist	20000	\$	\$	
17	Entry Level IM/IT Specialist	10000	\$	\$	
18	Technical Specialist	10000	\$	\$	
19	Technician	10000	\$	\$	
20	Entry Level Technician	2000	\$	\$	
21	Technologist	50000	\$	\$	
22	Entry Level Technologist	10000	\$	\$	
23	Trade Categories	20000	\$	\$	
24	General Labour	20000	\$	\$	
25	CO-OP Student	10000	\$	\$	
Total for evaluation purpose:					

3.1.2 Management Fee for Work Element 3

Bidders must submit three firm fixed prices in Table 4 below based on the total numbers of hours charged to Work Element 1 and Work Element 2 work (Through Put) for the Period of the Contract.

Table 4 Management Fee for Work Element 3

Management Fee	Year 1	Year 2
Low Throughput (LT) Up to 300,000 Hours	\$	\$
Medium Throughput (MT) 300,000 to 500,000 Hours	N/A	\$
High Throughput (HT) Over 500,000 Hours	N/A	\$

The formula to determine the Management Fee price for evaluation purposes is the following:

$$(LT1) + [(LT2 \times 0.1) + (MT2 \times 0.45) + (HT2 \times 0.45)] = \text{Evaluation price for Management Fee}$$

N° de l'invitation - Solicitation No.

W8482-217850/F

N° de réf. du client - Client Ref. No.

W8482-217850

N° de la modif - Amd. No.

File No. - N° du dossier

027ism.W8482-217850

Id de l'acheteur - Buyer ID

027ism

N° CCC / CCC No./ N° VME - FMS

Total Evaluation Price of Bid = Total for All-Inclusive Hourly Labor rates + Evaluation price for Management Fee.

N° de l'invitation - Solicitation No.
W8482-217850/F
N° de réf. du client - Client Ref. No.
W8482-217850

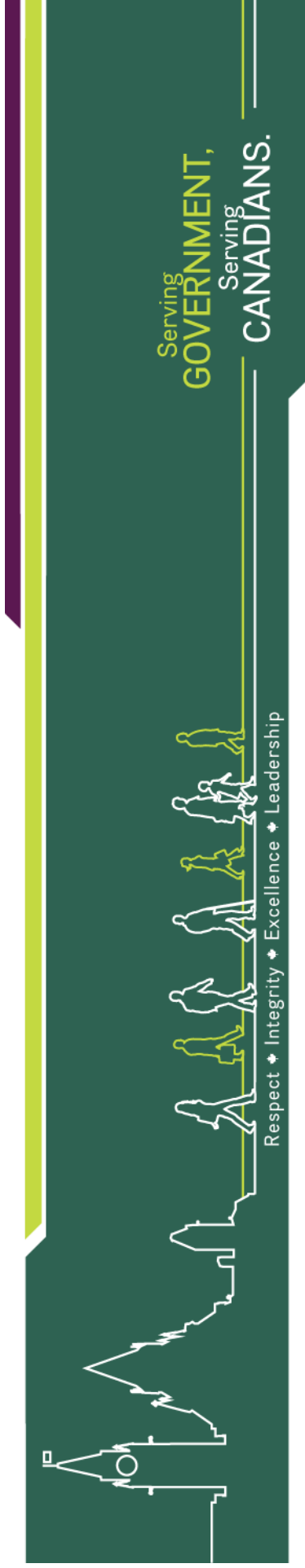
N° de la modif - Amd. No.
File No. - N° du dossier
027ism.W8482-217850

Id de l'acheteur - Buyer ID
027ism
N° CCC / CCC No./ N° VME - FMS

Appendix I

FORMAT FOR RESUME

NETE Contract Evaluation Plan	
Function Title: Corresponding Function Title (ex. Site Manager) from the SOW or Skill/Knowledge requirement from Appendix 4 of the SOW	
Proposed Candidate: (Name of employed individual or letter of intent attached)	
Labour Category: (that the Candidate will meet iaw requirements of SOW Appendix 3)	
Requirements Management Team requirements or Skill/Knowledge requirements	Demonstrated Compliance Explain HOW the candidate meets Experience, Education and Qualification(s) requirements
Experience Provide experience chronologically Month-Year: Sept 2000 – present Title: Project Manager, Company #1, Description of roles, responsibilities with emphasis on Naval Engineering discipline(s), T&E experience, etc. -	
Education Year Degree / Diploma Institution -	
Qualification(s) Ex: - Security Classification: NATO Secret - P.Eng., Province - Microsoft Certified System Engineer - Project Management Professional (PMP)	



Bidder's Conference

Naval Engineering Test Establishment (NETE) 3 Support Contract Renewal

Presented to: Industry
Presented by: NETE 3 Project Team
22 September 2022



Public Works and
Government Services
Canada

Travaux publics et
Services gouvernementaux
Canada

Canada

Preamble

- Discussions held today will not form part of the RFP, nor are discussions to be interpreted as negotiations. The Request for Proposal takes precedence in the event of conflicting information during this presentation.
- Any questions posed today will be answered to the best of our ability. Answers to all questions will be handled through the formal Q&A process and will be made official through a solicitation amendment available to all Bidders via CanadaBuys.canada.ca
- Only questions answered through the formal process are to be taken as official answers. Any questions answered outside of this process are not official or binding in any way.

Agenda

Item	Objective	Speaker
Opening Remarks	<ul style="list-style-type: none">• Project Team Introductions• Industry Introductions• Objectives	Julie/All
Procurement Overview	<ul style="list-style-type: none">• Provide an overview of NETE	Cdr Bard/ Julie
Site Visit	<ul style="list-style-type: none">• Instructions on the Site Visit	Cdr Bard
Closing	<ul style="list-style-type: none">• Thank you	

NETE 3 Project Team

- Department of National Defence (DND)
 - Project Manager: Cdr Frédéric Bard
 - Procurement Authority: Roberto Petrocco
- Public Services and Procurement Canada (PSPC/PWGC)
 - Contracting Authority: Julie Beaumier
- Innovation Science and Economic Development Canada (ISED)
 - ISED Representative: Philippe Richer
- Fairness Monitor (FM)
 - Samson & Associates: Ted Pender

Fairness Monitor

- A Fairness Monitor (FM) is an independent third-party, holding a professional designation/accreditation, engaged to observe a Departmental activity, to render an impartial opinion and attest to whether decisions taken by the Department are fair, open, and transparent.
- The FM's role is to attest to the fairness, openness and transparency of the monitored activity.
 - Directly informs the Contracting Authority (CA) of any issues/potential fairness deficiencies that arise.
- All solicitation documents are shared with the FM before they are released to Industry.
- All bidder communication is shared with the FM.
- The FM attends all dealings with bidders including industry days, site visits, debriefings, etc.

Industry Introductions

- Canada requests one participant from each supplier to introduce themselves and/or their team

Please state the:

- Name of company
- Names of individuals



Objectives

- Provide an overview of the procurement;
- Facilitate the opportunity for industry to clarify information provided in the Request for Proposal (RFP) package; and
- Provide instructions for the mandatory site visit at the NETE facility in LaSalle, QC.



Overview: NETE Mandate

- To provide 4th Line engineering services and field testing in support of naval materiel for the Canadian Armed Forces (CAF).
 - Specifically, NETE provides:
 - Expert Test & Evaluation (T&E) Services and
 - Independent Verification and Validation (IV&V)
- to the RCN, Director General Maritime Equipment Program Management



Overview: NETE Core Services

1. Assessment of equipment/systems/software performance vs requirements
2. Assistance to the conduct and development of trials
3. Evaluation of Design Changes
4. Independent verification and validation (IV&V) of equipment/systems/software
5. Data recording, reduction and analysis
6. Problem investigation & analysis
7. Support to Ranges
8. Support of Innovation Projects
9. IV&V of Materiel, Acquisition & Support (MA&S) processes

Overview: GOCO Model

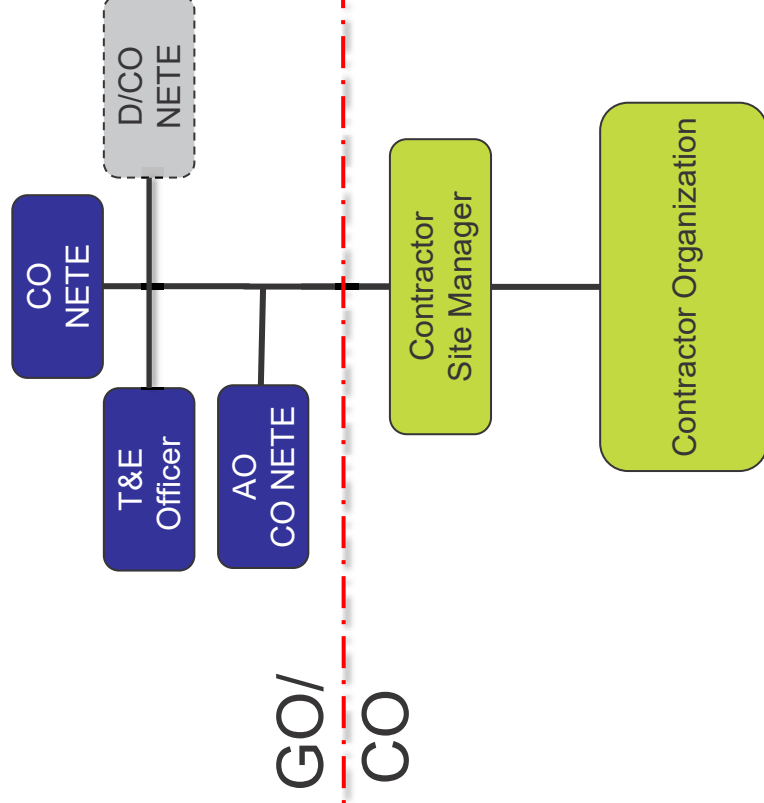
- **NETE** has functioned as a Government-Owned-Contractor-Operated (GOCO) organization since 1953
- **DND**
 - NETE is a military field unit under ADM(Mat)
 - DND owns all Intellectual Property (IP) and physical assets
 - CO NETE acts as Technical Authority on support contract
 - Long-term, performance-based, guaranteed-throughput contract
- **Contractor**
 - Maintains & operates facility and provides T&E services
 - Contractually bound to remain independent
 - No bidding on “Buy & Sell Canada” for similar DND work
 - No subcontracting to other contractors that have other DND work
 - All employees sign Non-Disclosure Agreements (NDA)

Overview: GOCO Model (cont'd)

- **Key Principles**
 - Independence
 - Long-term, performance-incentivized, relational type contract
 - Embedded contractors (trusted relationship)
 - Task-based and deliverable-oriented
 - User Pay and Cost Recovery
- **Benefits**
 - Ability to closely support DND oversight functions
 - Customer focused
 - Effective & efficient
 - Agile and responsive
 - Limited Military / Public Service personnel Full Time Equivalents (FTEs)

Overview

NETE Organization



Contract Requirements

CURRENT

- NETE 2 Contract
 - *Awarded:* October 2009
 - *Expires:* September 2024
 - *Total period:* 15 years.

FUTURE

- NETE 3 Contract duration
 - *Total period:* 20 yrs.
 - *Initial period:* 5 years
 - *Option period:* up to 15 years awarded in one or more year periods. Canada intends to maintain a 5 year contract period.

Task-based contracting vehicle for the provision of Engineering, Testing & Evaluation Services on an “as and when requested basis”.

NETE 3 Requirements: Key Personnel

Management Team	
Site Manager	On-site representative and the principal point of contact.
Quality System Manager	Maintains NETE's ISO 9001 certification through its Quality System.
Facility Manager	Maintains and supports the facility and immovable assets.
Health and Safety/ Hazardous Material / Environmental Specialist(s)	Manages health and safety, hazardous material and environmental programs.
Section Head Managers:	
Marine Systems	Qualified as a Naval Systems Specialist or as a Senior Engineer.
Combat Systems	Qualified as a Naval Systems Specialist or as a Senior Engineer.
Information & Communication Systems	Qualified as a Senior Engineer or a Senior IM/IT Specialist.
Labour Categories	
Include but are not limited to:	Engineers, Technicians, Technologists, IT Testers, Network Administrators, IM and IT Security Specialists, Naval System Specialists and Environmental Scientists/Specialists. Key fields of interest include, but are not limited to: marine platform systems, naval combat systems, information & communication systems, operational analysis, modeling and simulation, shock, vibration & environmental testing, data acquisition and analytics.

NETE 3 Requirements: Independence

- Free of actual or perceived conflict of interests
- Cannot be involved in any type of work for which NETE could be called upon to conduct IV&V
- Confidentiality agreements to ensure no unfair advantage in the pursuit of GoC contracts
- Cannot reject legitimate NETE work to avoid actual or potential conflict of interest
- Independence-related clauses and associated Non-Disclosure Agreements in the RFP.

NETE 3 Requirements: Security

- Access to Controlled Goods
- Access to unclassified military data subject to Technical Data Control Regulations
- Access to PROTECTED and CLASSIFIED information systems
- Access to Restricted Areas
- Access to information up to NATO SECRET and TOP SECRET
- Personnel Security Screening up to TOP SECRET
- Safeguard COMSEC information

Promoting Indigenous Business

- New government-wide initiative to promote Indigenous Business.
 - Each procurement needs to demonstrate meaningful Indigenous considerations, advancing reconciliation and an awareness of historic and Modern Treaties that may be relevant to the procurement.
- An amendment to the NETE 3 RFP will be issued.
 - [Reference: Indigenous business and federal procurement \(sac-isc.gc.ca\)](https://www.sac-isc.gc.ca)

Questions

- All enquiries must be submitted in writing to the Contracting Authority no later than fourteen (14) calendar days before the bid closing date. Enquiries received after that time may not be answered.
- Please make enquiries (one) 1 question per paragraph
- Enquiries will be answered through the formal solicitation amendment process.

Questions

?



Site Visit

- Agenda
- Instructions for the site visit
- Questions

Site Visit: General

- As noted in the RFP, the Site Visit is mandatory. Bidders will be required to sign an attendance sheet.
- Please note that any information provided during the visit is not binding on Canada and bidders are reminded to use the formal Q&A process to seek answers to questions. The questions and answers will be published on CanadaBuys.canada.ca
- Visitors must provide their own safety equipment.

Site Visit: Agenda

Saturday, September 24th, 2022

- 9:45 – 10:00 – Attendees will be processed through security (ID required) and will be escorted to the cafeteria.
- 10:00 – 11:00 – Tour of NETE facility with all the participants
- 11:00 – 11:15 – Question period
- 11:15 – 11:30 – Departure of all the participants

Please note that attendees will be escorted during their site visit.
The escort will not answer any questions.

Site Visit: Instructions

- **Address:** [9401 Wanklyn Street, LaSalle, Quebec](#)
- **Parking:** It is recommended that attendees park on the street (free).
- **Safety Equipment:** Canada will not be supplying any safety equipment to attendees. Attendees are required to wear safety glasses and closed toed shoes (no heels) during the tour.
- Attendees may bring paper and writing instruments.
- For security reasons, cell phones, cameras and electronic devices **will not be authorized** in the facility during the site visit.



Site Visit: Questions

?

Closing Remarks

- Thank you

