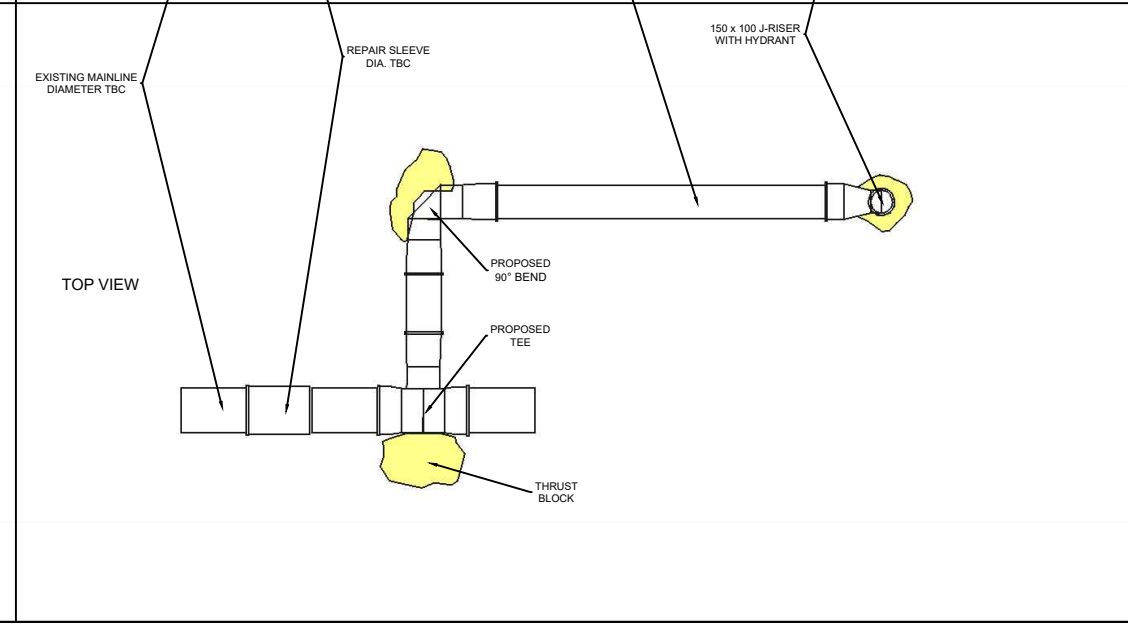
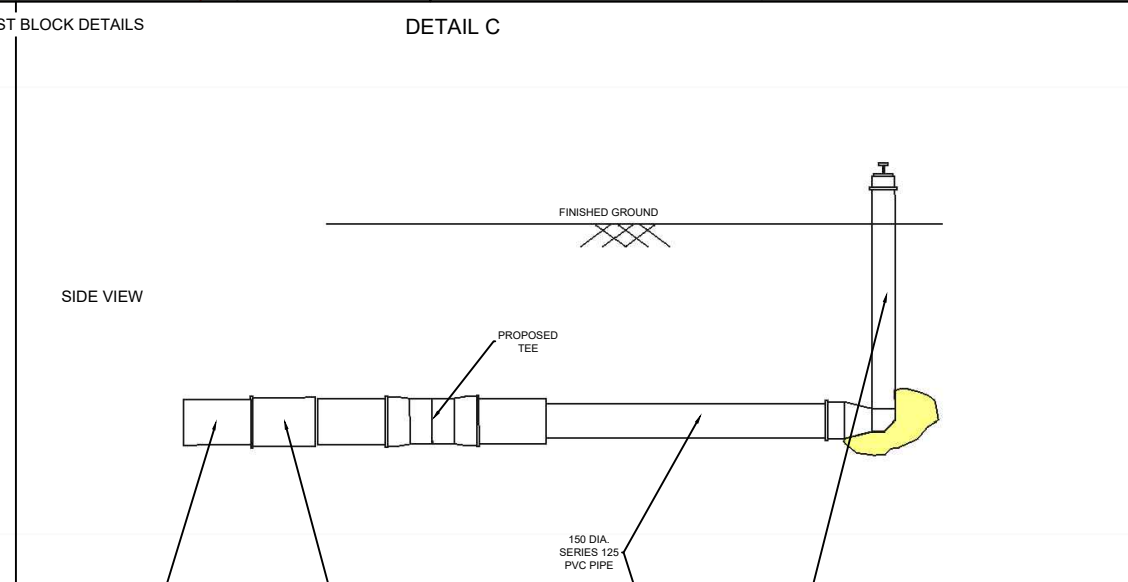
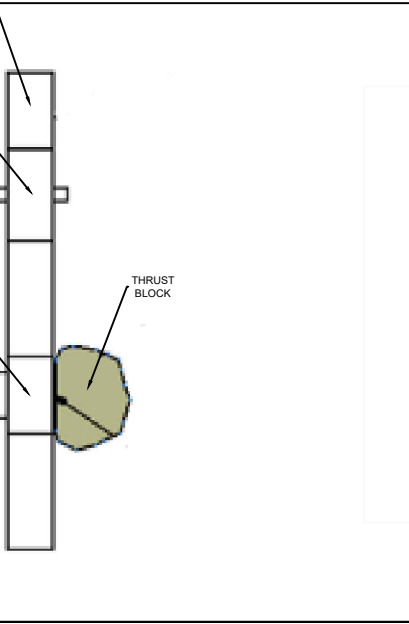
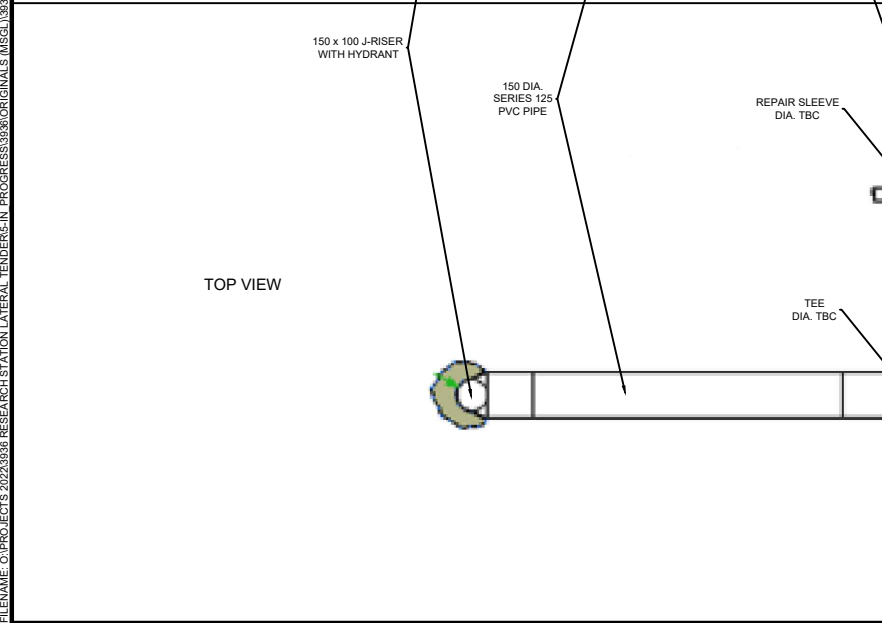
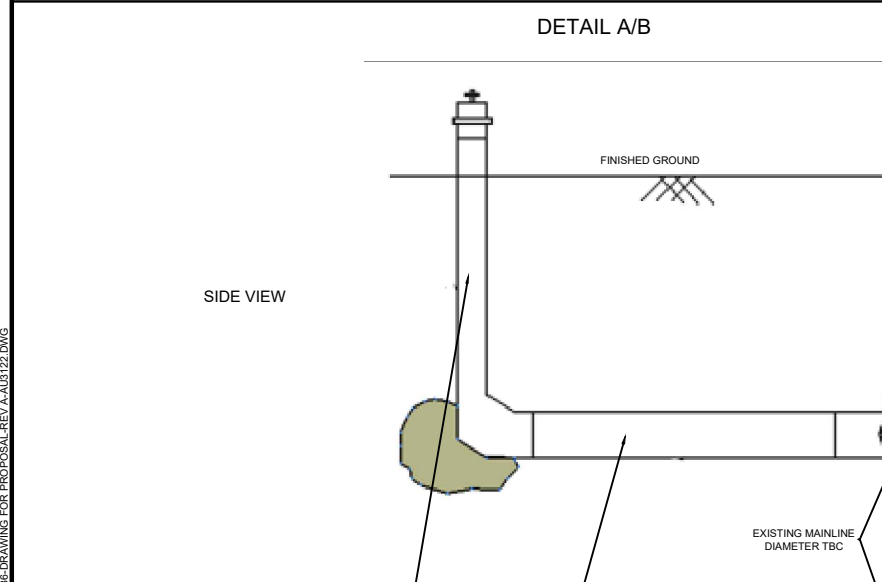
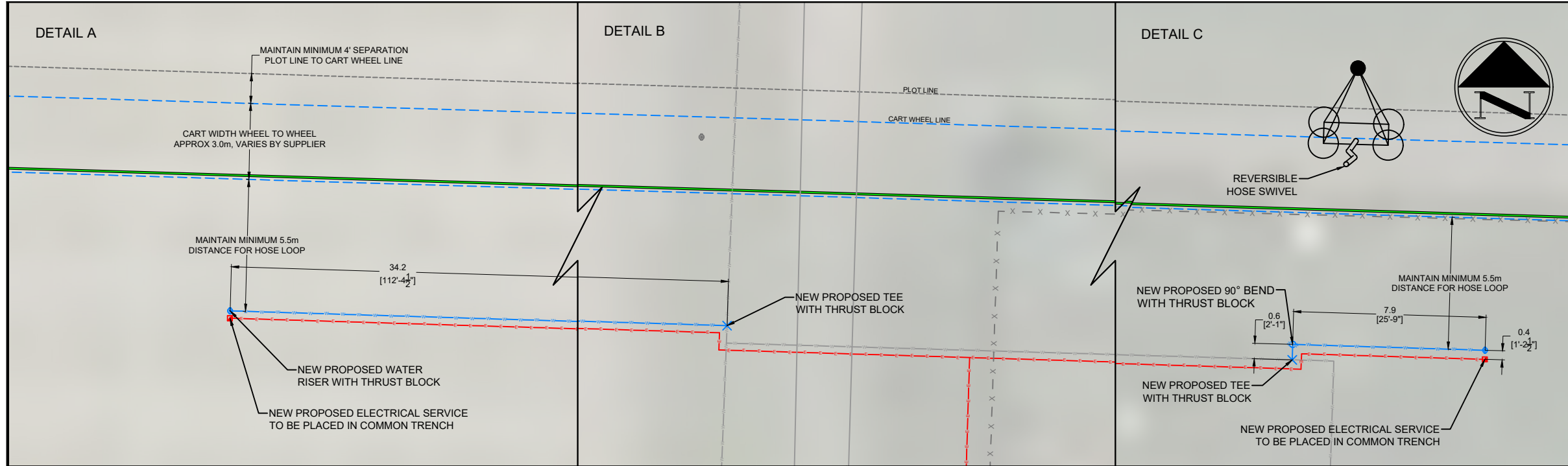


PLOT DATE: August 31, 2022 3:07:40 PM  
 SAVE DATE: August 31, 2022 11:38:54 AM  
 USERNAME: C:\PROJECTS\2022\888\RESEARCH STATION LATERAL - IRRIGATION\PROGRESS\3936\ORIGINALS\ISSUES\3936.DWG FOR PROPOSAL REV A AUG 22.DWG

- VERTICAL BENDS ARE TO BE ANCHORED BY CONCRETE FOR THRUST RESISTANCE BY DEAD WEIGHT.
- ALL CONCRETE THRUST BLOCKS SHALL EXTEND INTO UNDISTURBED SOIL. THRUST BLOCKS IN SOFT UNSTABLE SOILS WILL REQUIRE REMOVAL OF NATIVE SOILS AND REPLACEMENT WITH COMPACTABLE FILL OF SUFFICIENT STABILITY TO RESIST THRUST
- THRUST BLOCKS SHALL BE OF CONCRETE OBTAINING A COMPRESSIVE STRENGTH OF AT LEAST 20 MPa @ 28 DAYS. CEMENT TO BE 50 (SULPHATE RESISTANT).
- ALL CONCRETE SHALL BE KEPT CLEAR OF BELLS AND SHALL CONTACT THE PIPE. USE A MINIMUM OF 6 mil POLYETHYLENE BETWEEN CONCRETE AND ALL FITTING SURFACES.
- CONTRACTOR TO ARRANGE FOR LOCATES TO VERIFY EXCAVATION AREA CLEAR OF UTILITY CONFLICT.
- CONTRACTOR TO VERIFY EXISTING WATERLINE LOCATION IN FIELD, AND DIAMETER FROM DESIGN PLANS

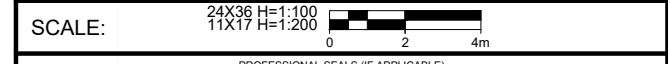


R#	YY/MM/DD	DESCRIPTION	DRN	CHK	APP

REVISION

#	YY/MM/DD	DESCRIPTION	DRN	CHK	APP

ISSUE



PROFESSIONAL SEALS (IF APPLICABLE)

**AAFC RESEARCH CENTRE**  
 ROT U HISTORICAL PLOTS - PROPOSED IRRIGATION  
 S.W. 1/4 SEC. 3-9-21-W4M  
 LETHBRIDGE, ALBERTA  
 DETAILS

PROJECT NUMBER	SUBSET	DRAWING NUMBER	REVISION
<b>3936</b>		<b>#3936-2</b>	
SHEET OF TOTAL SHEETS			
<b>2 OF 2</b>			