

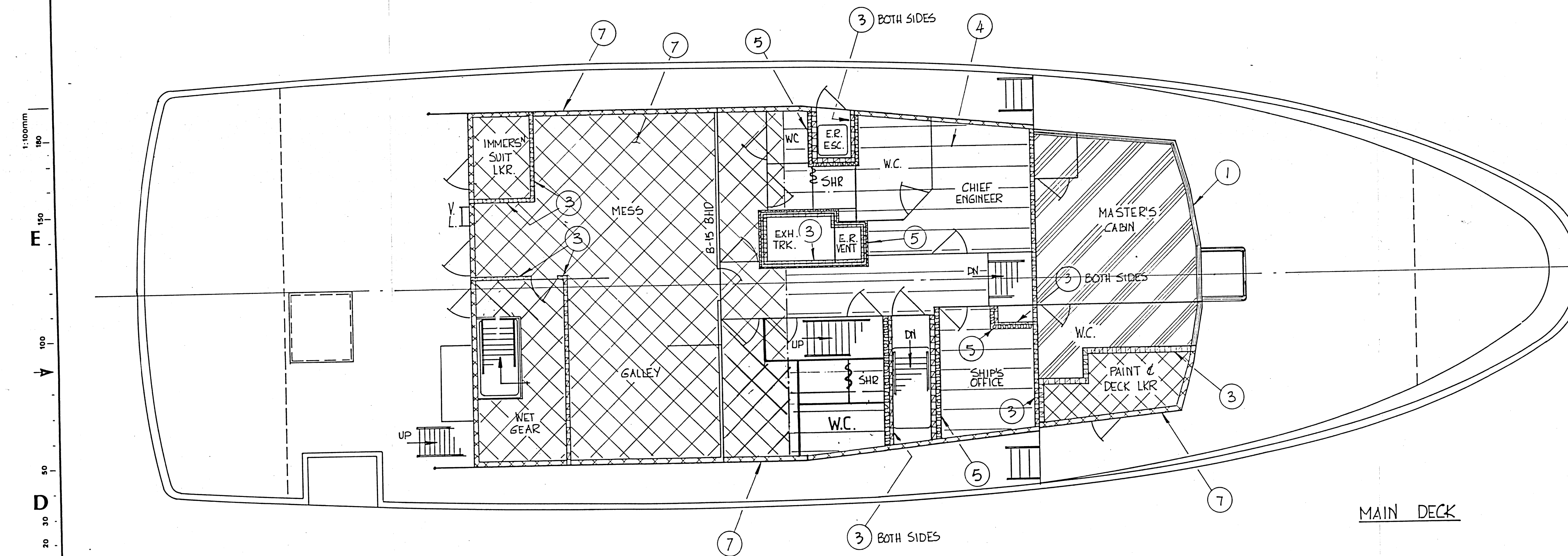
PROFILE

MATERIAL LIST

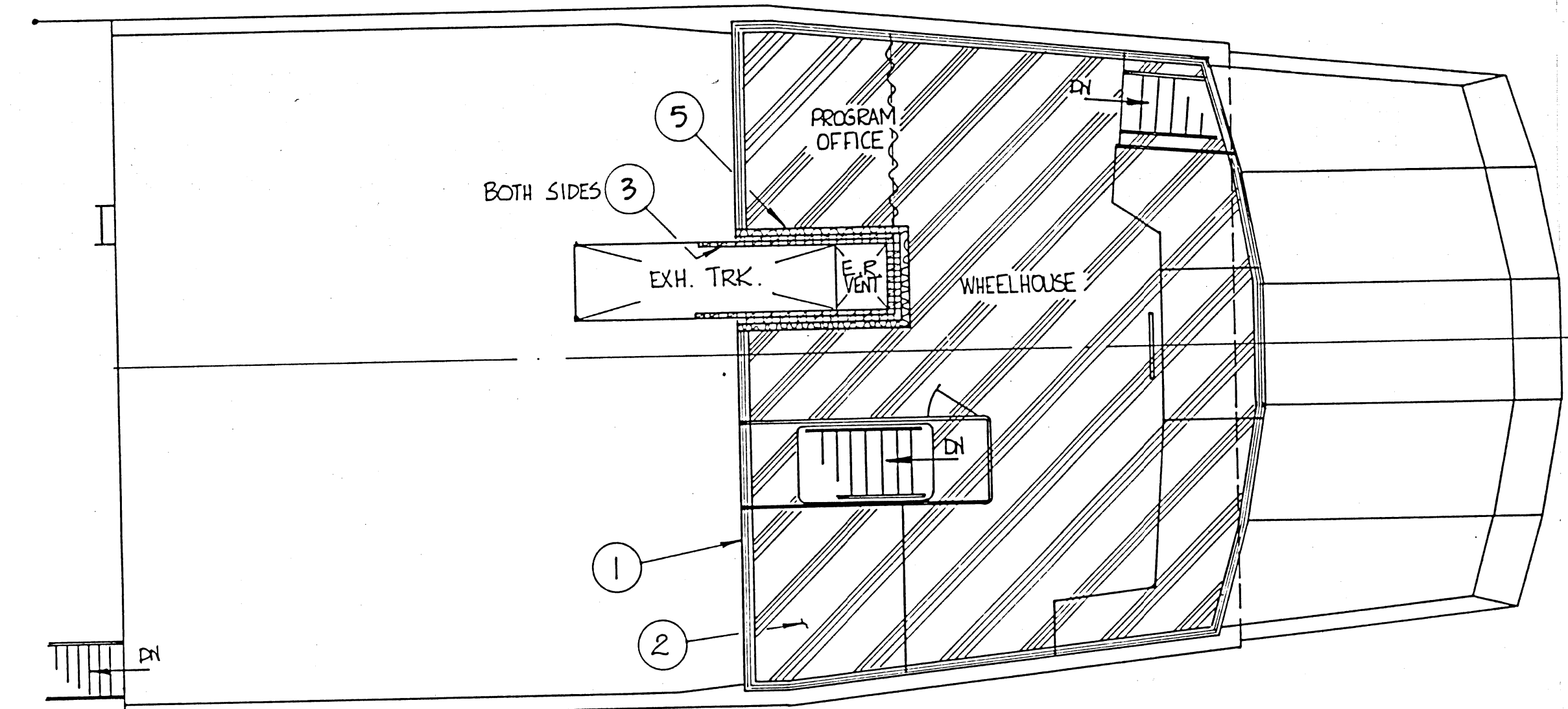
IDENT. NO.	ITEM	DESCRIPTION	THICKNESS
1	THERMAL INSULATION - BLKDS	AF 530 FIBERGLAS (SEMI-RIGID)	75mm / 50mm OVER STIFFENER FACES
2	THERMAL INSULATION - DECKHEADS	AF 530 FIBERGLAS (SEMI-RIGID)	75mm / 50mm OVER STIFFENER FACES
3	FIRE INSULATION - ALUM BULKHEADS	ALBI-CLAD (SPRAY ON)	5mm (DRY)
4	FIRE INSULATION - ALUM DECKHEADS	ALBI-CLAD (SPRAY ON)	5mm (DRY)
5	ACOUSTIC INSULATION - BLKDS ACCOM. SIDE	MINERAL WOOL OR AF 530 FIBERGLAS	25 - 37mm
6	ACOUSTIC INSULATION - E.R. SIDE	MINERAL WOOL OR AF 530 FIBERGLAS FACED W/ 2mm SIL OVER DUBBED SHIP PL	75 - 100mm
7	FIRE AND THERMAL INSULATION	ALBI-CLAD (SPRAY ON) / AF 530 FIBERGLAS (SEMI-RIGID)	5mm (DRY) - 75/50mm OVER STIFFENER FACES
8	ACOUSTIC INSULATION BELOW DECKS	MINERAL WOOL OR AF 530 FIBERGLAS FACED W/ PERF. AL (MIN OPEN AREA 20%)	75 - 100mm
9	ANTI-CONDENSATION INSULATION	ALBI-CLAD - SPRAY ON	AS RECOMMENDED BY MANUFACTURER

Materials/Parts List

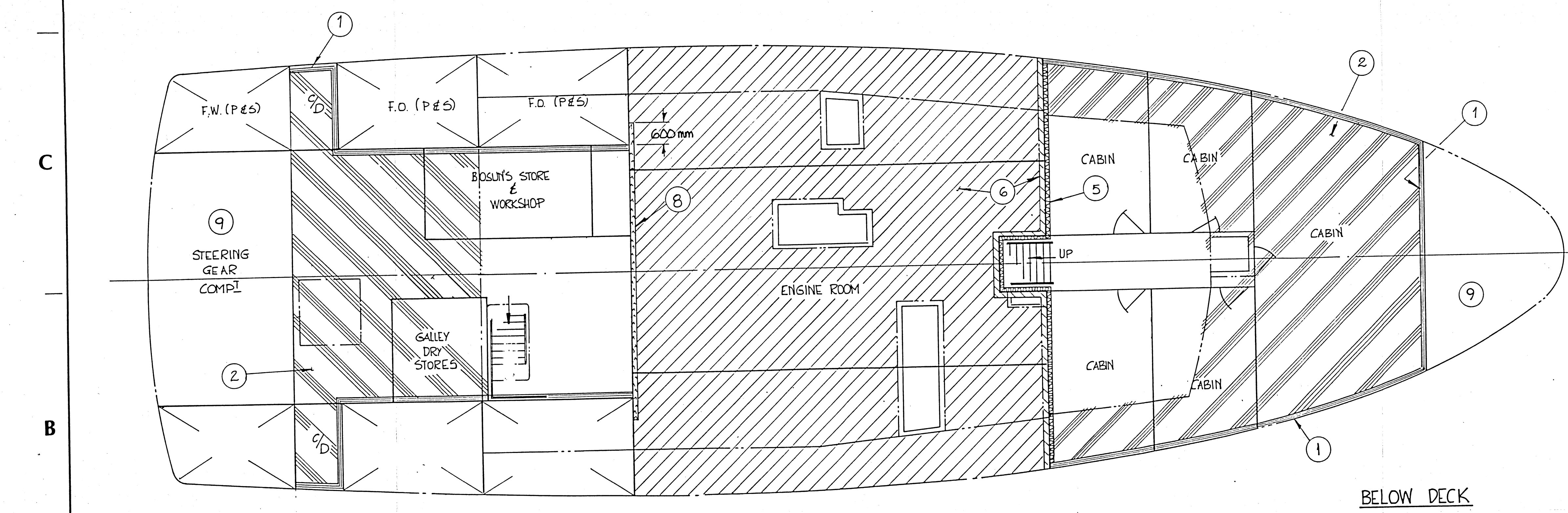
Nº	Quantity	Description
1		



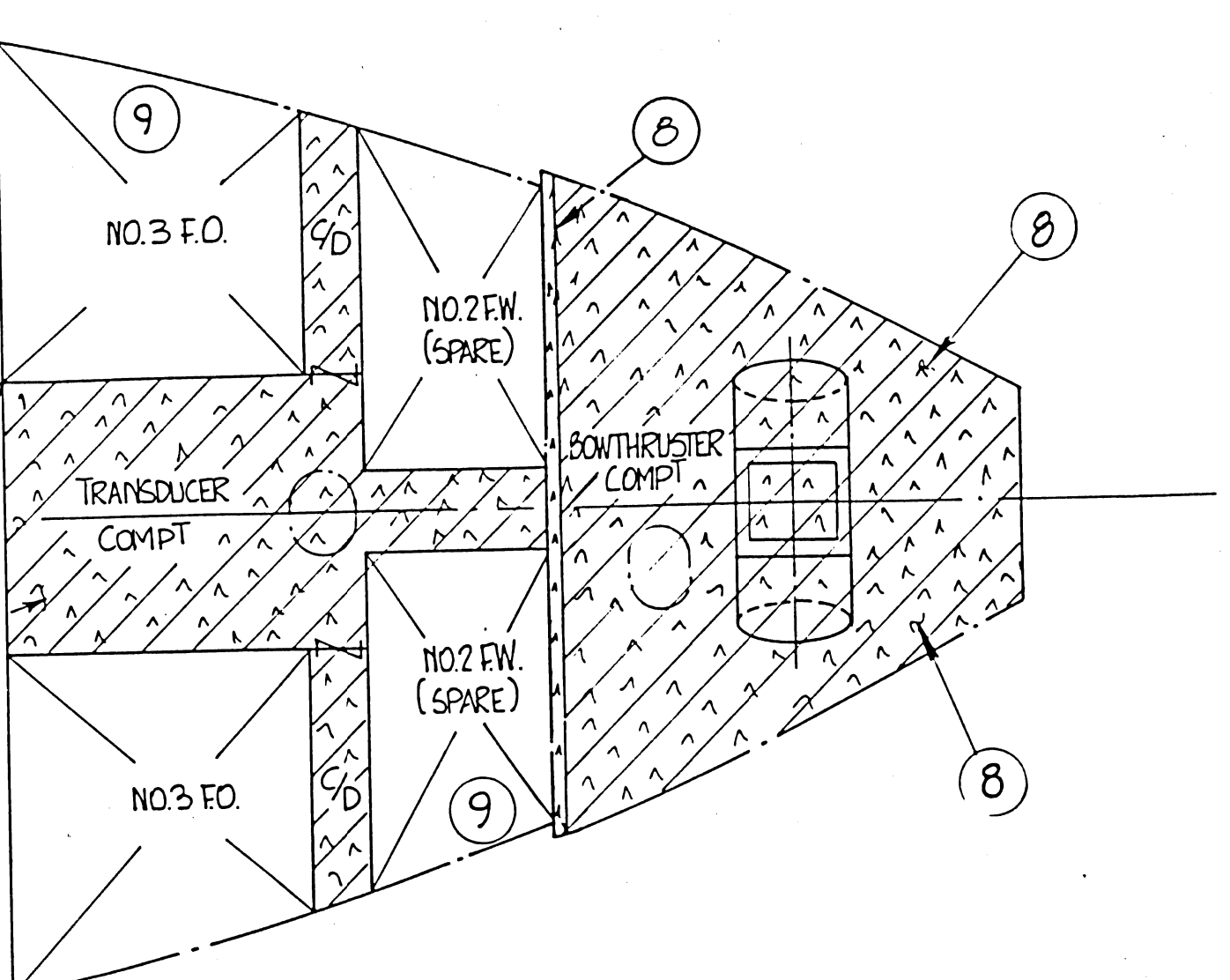
MAIN DECK



WHEELHOUSE / DECKHOUSE TOP



BELOW DECK



LEGEND:

1. [Pattern]	THERMAL INSULATION (BLKDS)	5. [Pattern]	ACOUSTIC INSULATION (BLKDS)
2. [Pattern]	THERMAL INSULATION (DECKHEADS)	6. [Pattern]	ACOUSTIC INSULATION (DECKHEADS)
3. [Pattern]	FIRE INSULATION (ALUM. BHD.)	7. [Pattern]	FIRE AND THERMAL INSULATION
4. [Pattern]	FIRE INSULATION (ALUM. DECKHEADS)	8. [Pattern]	ACOUSTIC INSULATION (BELOW DECKS)

Revisions

Nº	Remarks	Check	Date

Reference Drawings

Nº	Title	Drawing number

Government of Canada Fisheries and Oceans
 Ship Branch Ottawa

PROJECT
FPV. ARROW POST

DRAWING
INSULATION PLAN

date JULY/92 scale N.T.S. dwg no H93-58
 drawn by B.S. checked by R.C. sheet 1 of 1
 revision no. B.

MIKEMETAL
 PRODUCTS and SHIPBUILDING LTD.

PETERS HATHFIELD LTD.
 NAVAL ARCHITECTS and MARINE CONSULTANTS