

H

G

F

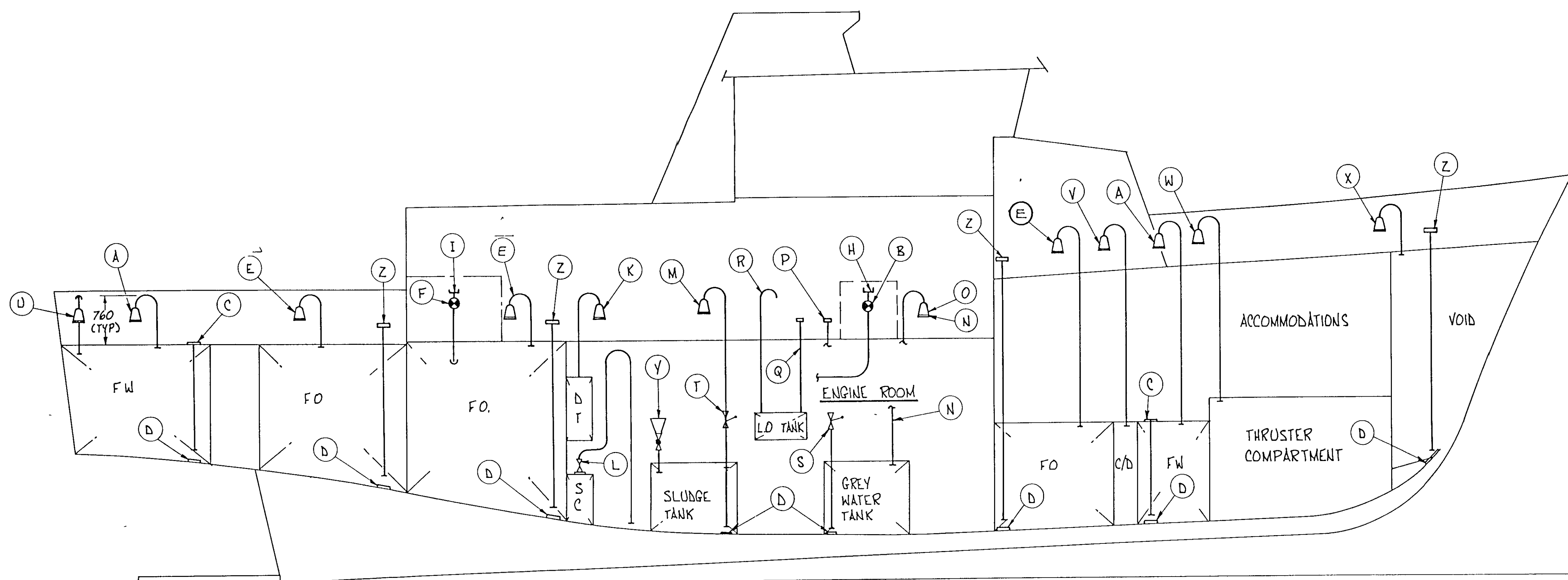
E

D

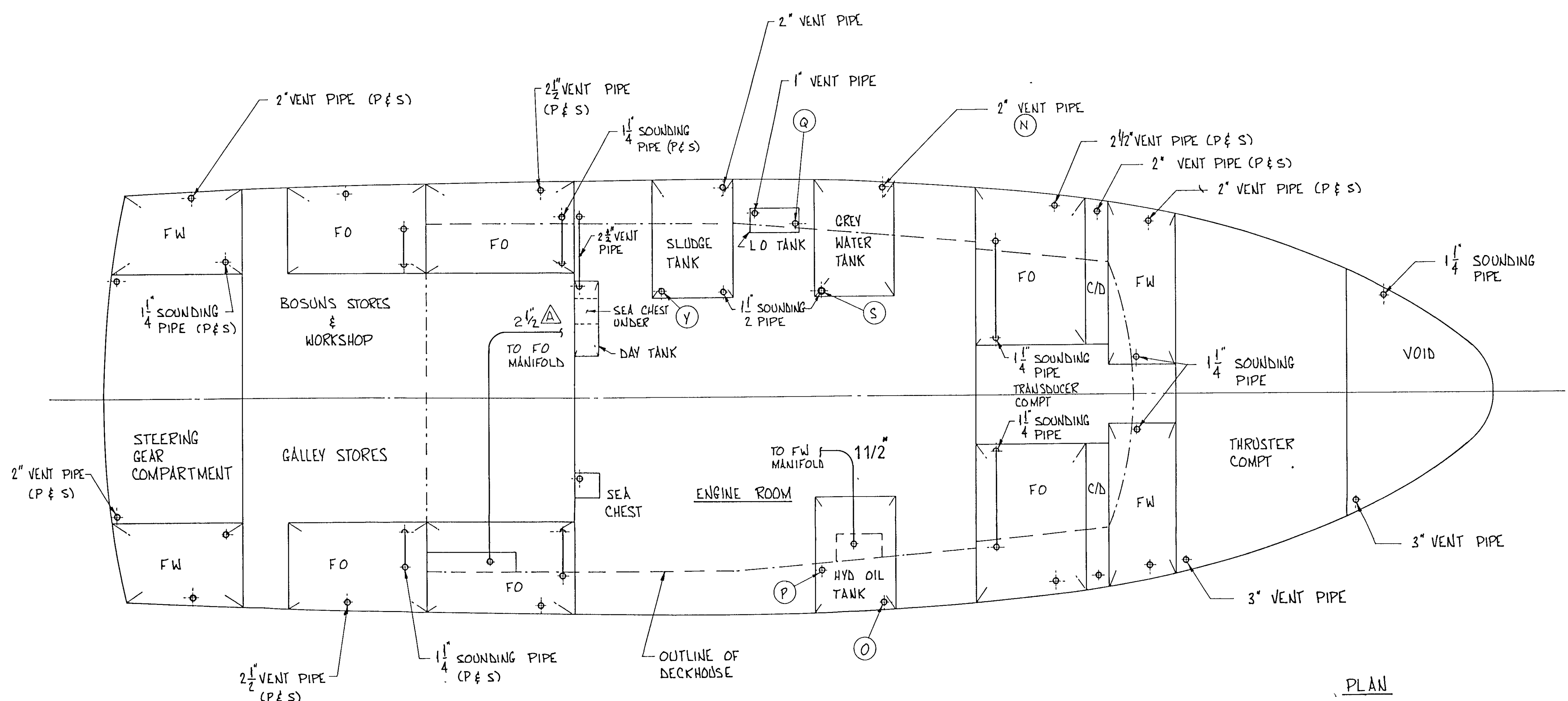
C

B

A



PROFILE



PLAN

IDENT	NO OFF	ITEM	DESCRIPTION	SIZE (IN)	MATERIAL	RATING	REMARKS	
A	4	FW TANK VENT TERMINAL	BALL CHECK, FLANGED	2	BRONZE, B62		C/W INSECT SCREEN	
B	1	FW TANK LOADING VALVE	GATE, FLANGED	2	CAST STEEL	ISO #		
C	4	FW TANK SOUNDING PLUG	SCREW IN FLUSH TYPE	1 1/4	BRONZE, B62			
D	13	SOUNDING PIPE STRIKE PLATE			STEEL		4" DIA x 1/4 THK PLATE	
E	6	FO TANK VENT TERMINAL	BALL CHECK, FLANGED	2 1/2	BRONZE, B62		C/W SST FLASH SCREEN	
F	1	FO TANK LOADING VALVE	GATE, SCREWED	2 1/2	CAST STEEL	ISO #		
G		NOT ALLOCATED						
H	1	FW QUICK CONNECT COUPLING	KAMLOK OR EQUAL	2	BRONZE, B62		C/W GASKETTED CAP & KEEP CHAIN	
I	1	FO QUICK CONNECT COUPLING	KAMLOK OR EQUAL	2 1/2	BRONZE, B62		C/W GASKETTED CAP & KEEP CHAIN	
J		NOT ALLOCATED						
K	1	DAY TANK VENT TERMINAL	BALL CHECK, FLANGED	2 1/2	BRONZE, B62		C/W SST FLASH SCREEN	
L	2	SEA CHEST S/D VALVE	GATE, SCREWED	1/2	BRONZE, B62	ISO #	ANTI-SYPHON HOLE AT TOP OF VENT	
M	1	SLUDGE TANK VENT TERMINAL	BALL CHECK, FLANGED	2	BRONZE, B62		C/W SST FLASH SCREEN	
N	1	GREY WATER TANK VENT TERMINAL	BALL CHECK, FLANGED	2	BRONZE, B62			
O	1	HYD OIL VENT TERMINAL	BALL CHECK, FLANGED	2	BRONZE, B62		C/W SST FLASH SCREEN	
P	1	HYD OIL FILL CAP	SCREW CAP, 12" STAND PIPE	1 1/4	BRONZE, B62		C/W FILTER	
Q	1	LO FILL CAP	SCREW CAP, 12" STAND PIPE	1	STEEL		C/W FILTER	
R	1	LO TANK VENT TERMINAL	GOOSENECK VENT	1	STEEL		C/W SST FLASH SCREEN	
S	1	GREY WATER SOUNDING VALVE	SCREW TYPE, WEIGHTED COCK	1 1/2	BRONZE, B62		LOCATED IN ER ON 24" STAND PIPE	
T	1	SLUDGE TANK SOUNDING VALVE	SCREW TYPE, WEIGHTED COCK	1 1/2	BRONZE, B62		LOCATED IN ER ON 24" STAND PIPE	
U	2	SG COMPARTMENT VENT TERMINAL	BALL CHECK, FLANGED	2	BRONZE, B62			
V	2	TRANSODOR COMPT VENT TERMINAL	BALL CHECK, FLANGED	2	BRONZE, B62			
W	1	BOW THRUSTER VENT TERMINAL	BALL CHECK, FLANGED	3	BRONZE, B62			
X	1	FORE PEAK VENT TERMINAL	BALL CHECK, FLANGED	3	BRONZE, B62			
Y	1	SLUDGE TANK FILL VALVE	BALL VALVE	3/4	BRONZE, B62		C/W SHEET METAL FUNNEL & MESH FILTER	
Z	7	SOUNDING CAPS	SCREW CAP, 12" STAND PIPE	1 1/4	BRONZE, B62		C/W KEEP CHAIN	

Materials/Parts List

NO	Quantity	Description
1		

Government of Canada Fisheries and Oceans
 Ship Branch Ottawa
 PROJECT FPV ARROW POST
 DRAWING VENT, FILL & SOUNDING DIAGRAM
 date JULY/92 scale NTS dwg no H93-38
 drawn by RH checked by RC sheet 1 of 1
 revision no B

HIKEMETAL PRODUCTS and SHIPBUILDING LTD
PETERS HATFIELD LTD
 NAVAL ARCHITECTS AND MARINE CONSULTANTS