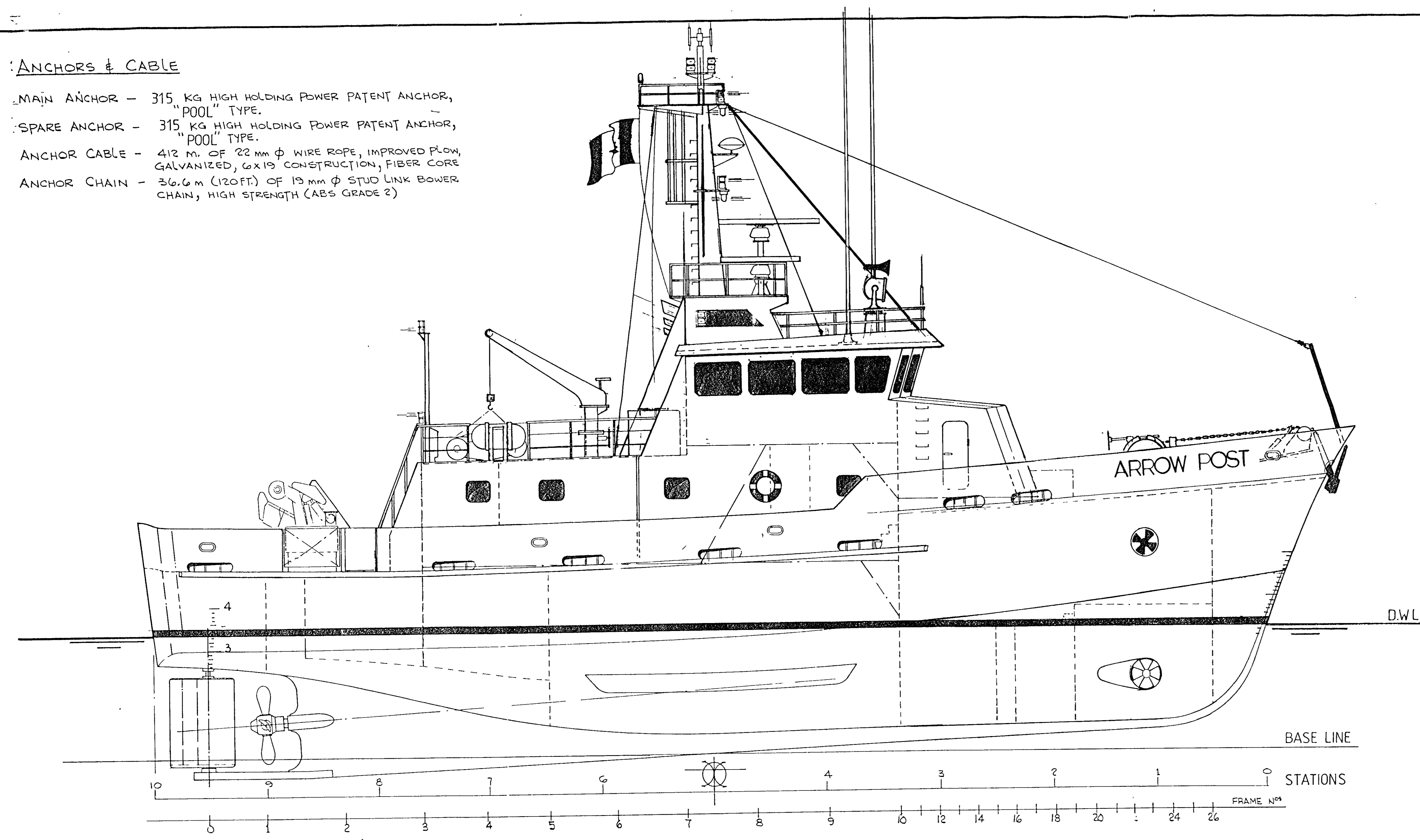


ANCHORS & CABLE

- MAIN ANCHOR - 315 KG HIGH HOLDING POWER PATENT ANCHOR, "POOL" TYPE.
- SPARE ANCHOR - 315 KG HIGH HOLDING POWER PATENT ANCHOR, "POOL" TYPE.
- ANCHOR CABLE - 412 M. OF 22 MM Ø WIRE ROPE, IMPROVED FLOW, GALVANIZED, 6X19 CONSTRUCTION, FIBER CORE
- ANCHOR CHAIN - 36.6 M (120 FT) OF 19 MM Ø STUD LINK BOWER CHAIN, HIGH STRENGTH (ABS GRADE 2)



SERVICE

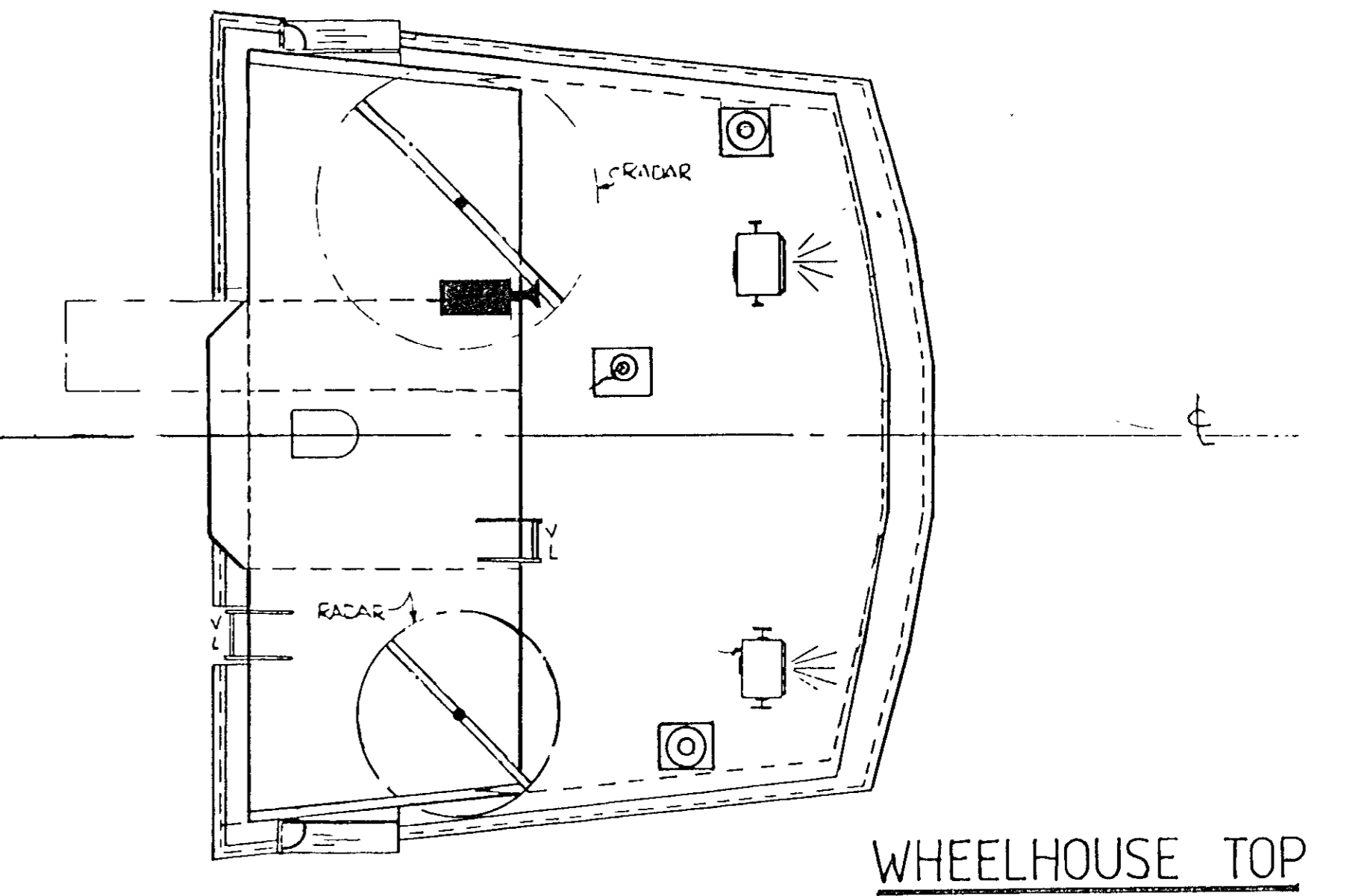
C.C.G.-S.S.B. HOME TRADE II. NON-PASSENGER.

CLASSIFICATION

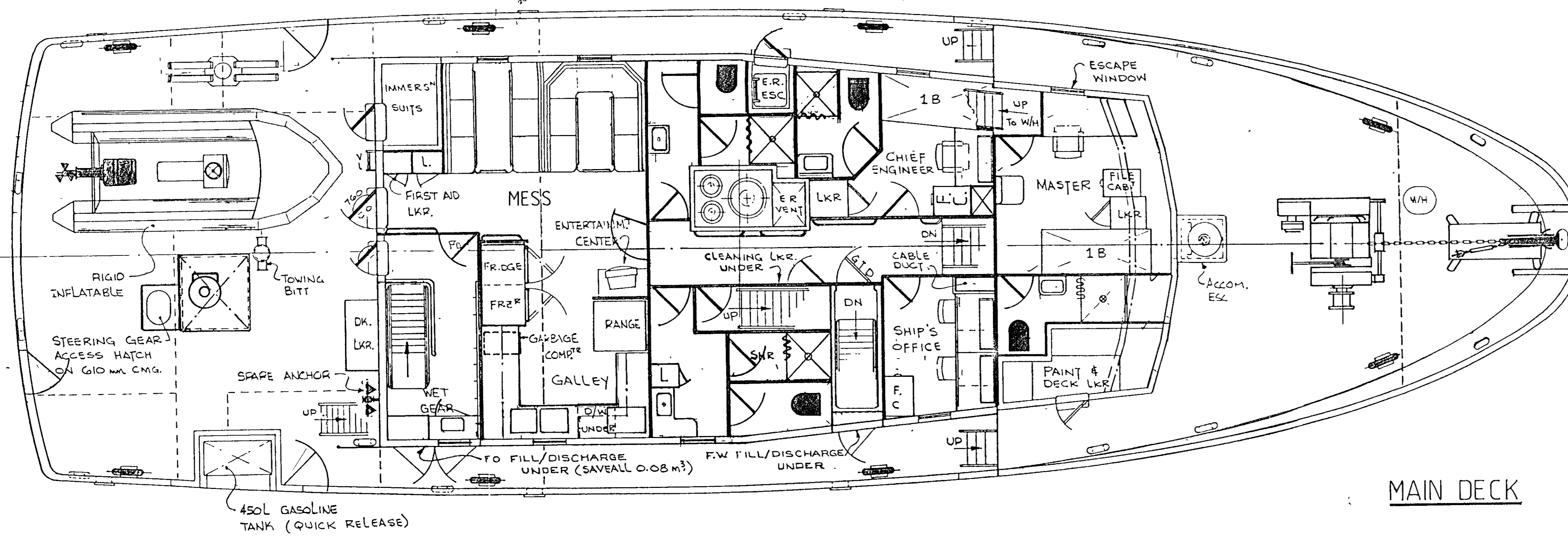
A.B.S. A1 FISHERIES PATROL VESSEL

PRINCIPAL PARTICULARS

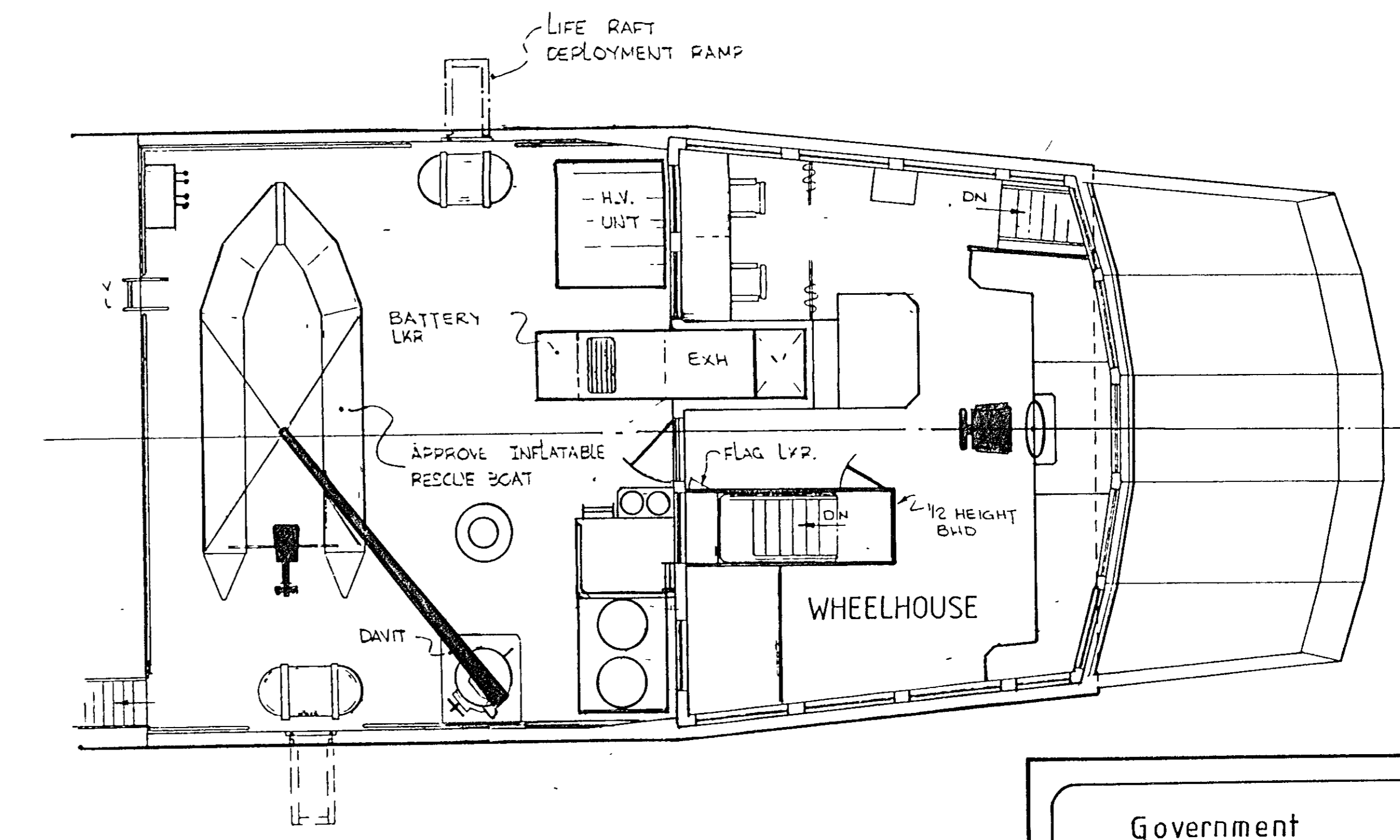
LENGTH OVERALL	28.97 m.
LENGTH B.P. (D.W.L.)	26.50 m.
BREADTH (MLD)	8.80 m.
DEPTH (MLD)	4.07 m.
DRAFT (MAX) D.W.L.	3.35 m.
POWER	955 K.W.
SPEED	12 KNOTS.
FUEL OIL	56,140 LITERS.
FRESH WATER	21,300 LITERS.
COMPLEMENT	6 CREW + 6 SUPERNUMERARY.
GROSS TONNAGE	239 TONS.



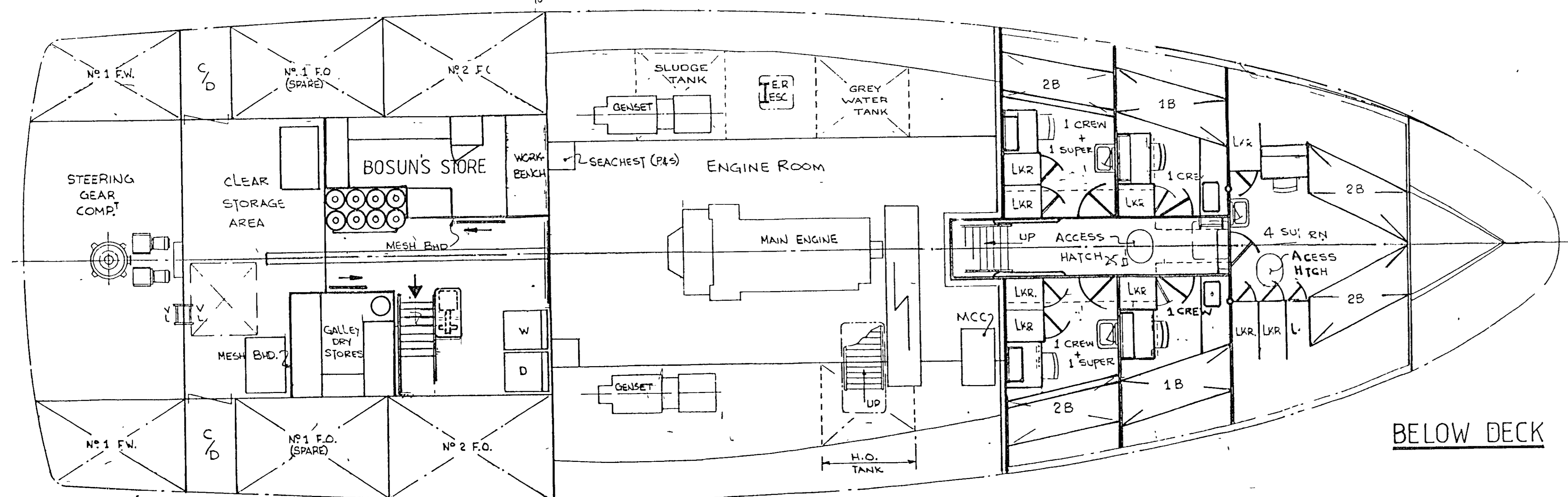
WHEELHOUSE TOP



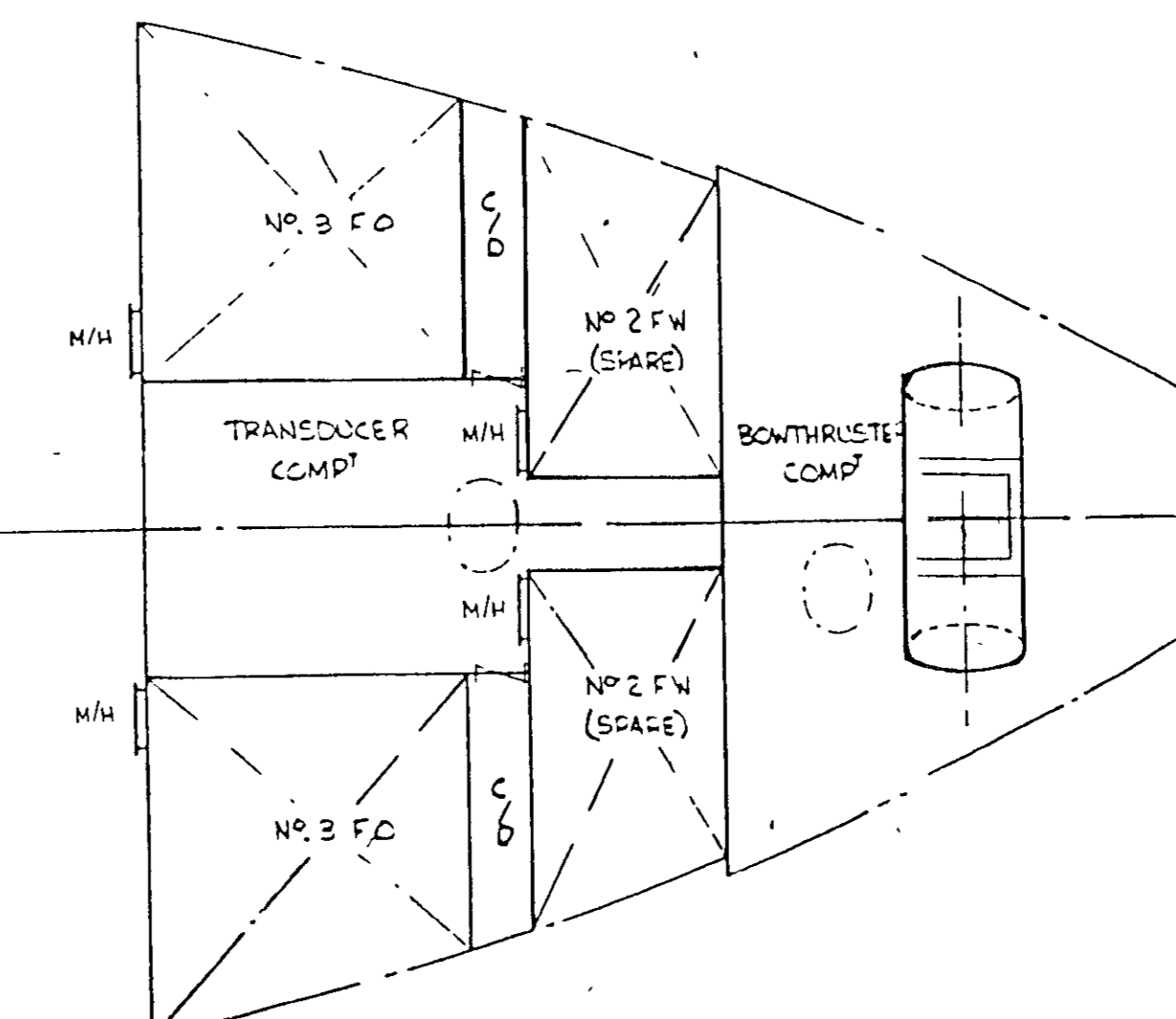
MAIN DECK



WHEELHOUSE / DECKHOUSE TOP



BELOW DECK



Government of Canada	Fisheries and Oceans	
Ship Branch	Ottawa	
PROJECT		
E.P.V. ARROW POST		
DRAWING		
GENERAL ARRANGEMENT		
date JULY/92	scale 1:50	drawing no H93-00
drawn by KK	checked by R.C.	sheet 1 of 1
		revision no. B

Canada

HIKEMETAL
PRODUCTS & SHIPBUILDERS LTD.

PETER S. HATFIELD LTD.
NAVAL ARCHITECTS AND MARINE CONSULTANTS.

PSA 56-01-94