

REFERENCE DRAWINGS			
NO.	DATE	DESCRIPTION	Drawn by / Dessiné par
3	2022/11/08	ISSUED WITH ADDENDUM 3	
2	2022/10/24	ISSUED WITH ADDENDUM 2	
1	2022/10/19	ISSUED FOR ADDENDUM 1	
0	2022/09/28	ISSUED FOR TENDER	

REVISIONS			
NO.	DATE	DESCRIPTION	Drawn by / Dessiné par
A		A Detail number	A Numero de detail
B		B Sheet number	B Sur feuille numero

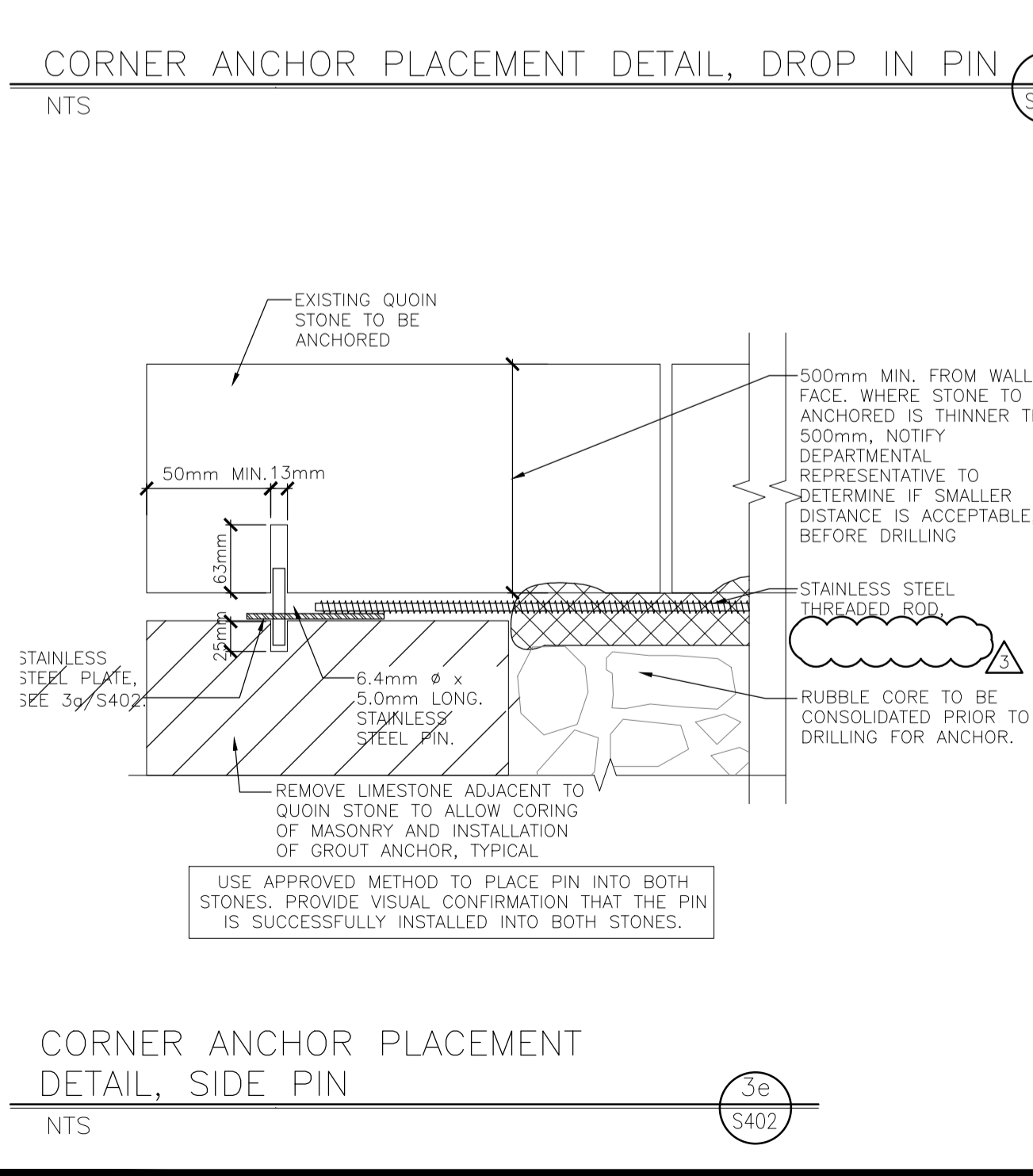
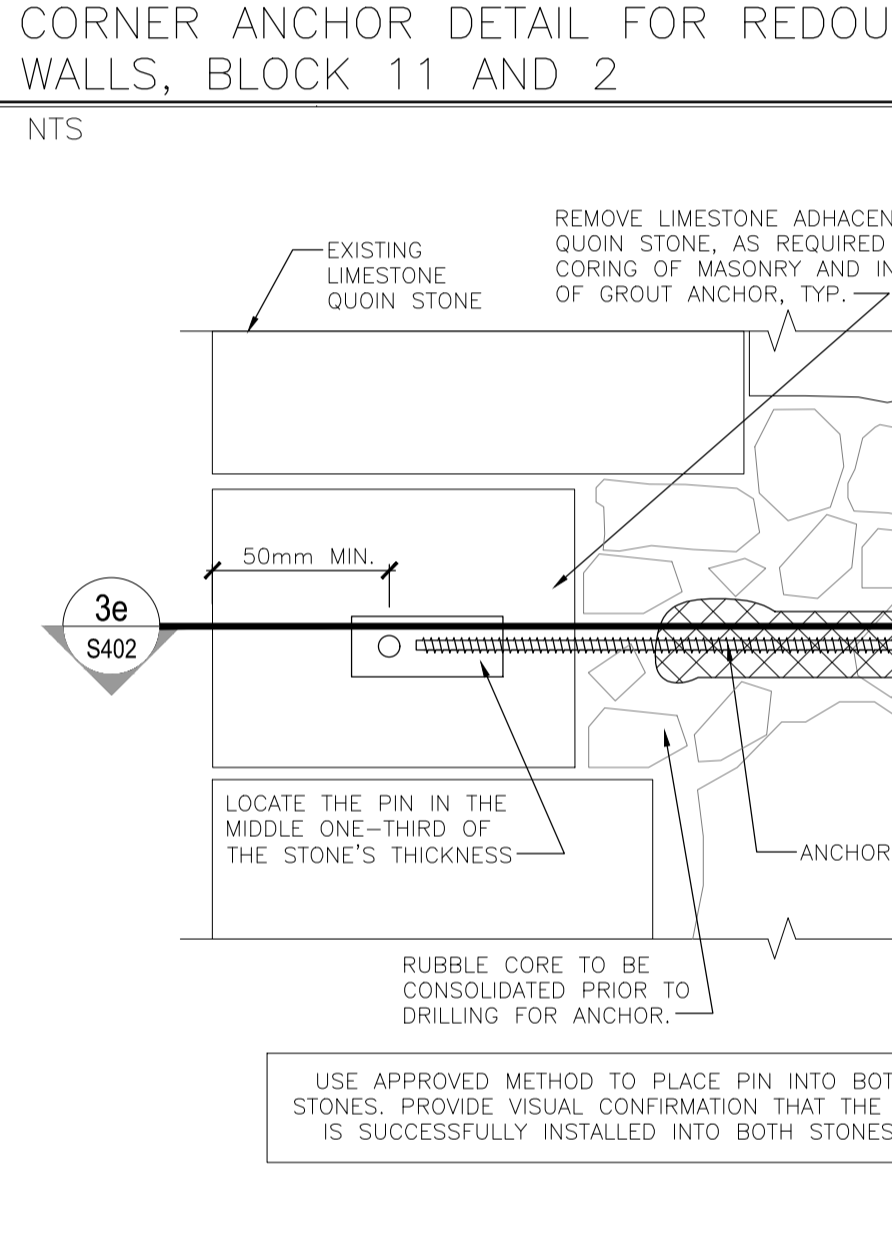
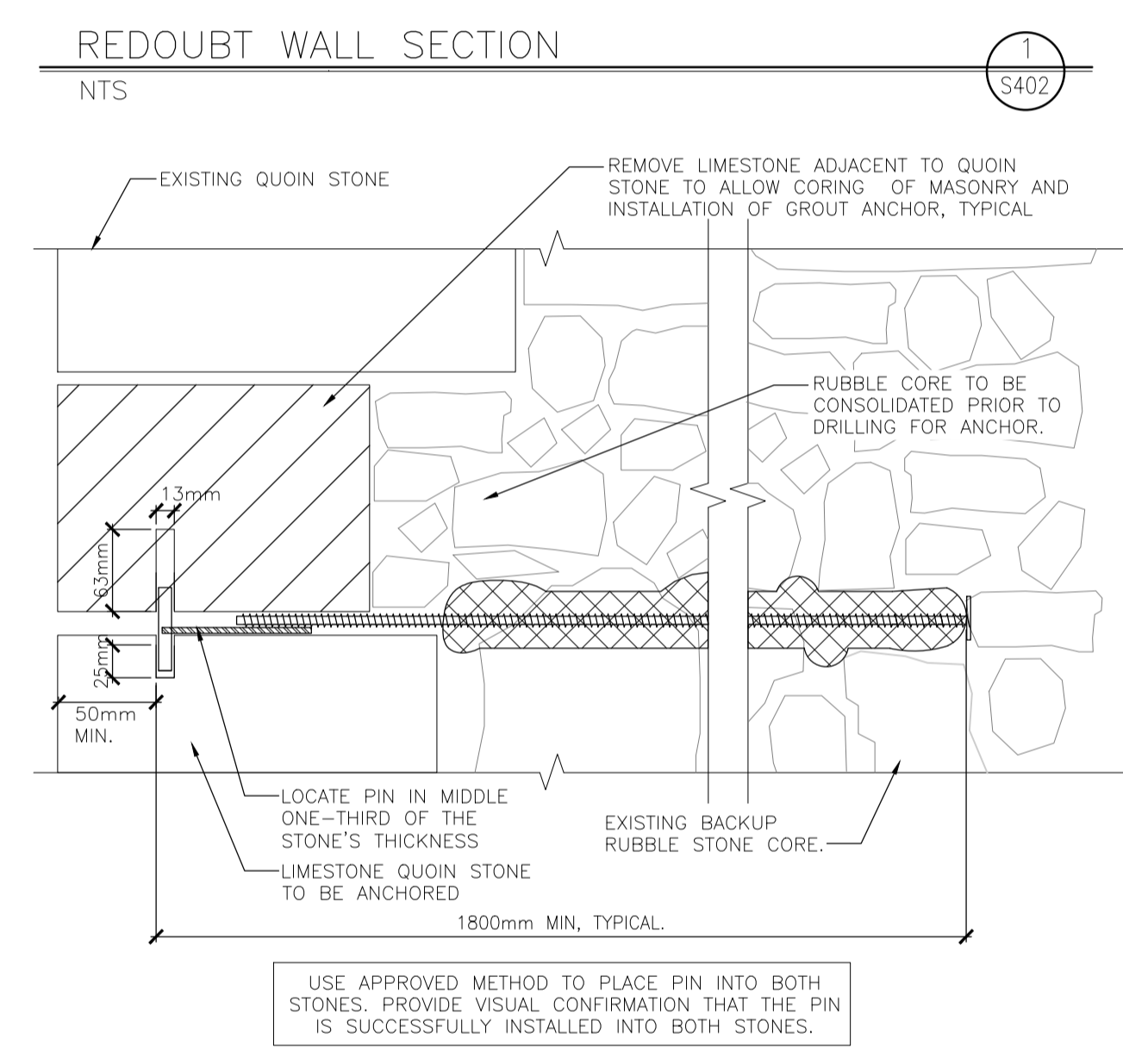
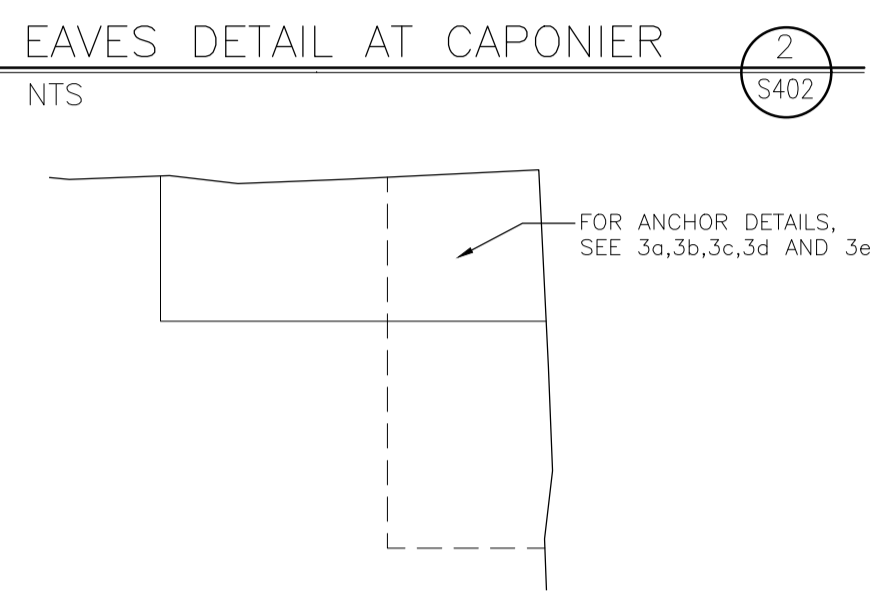
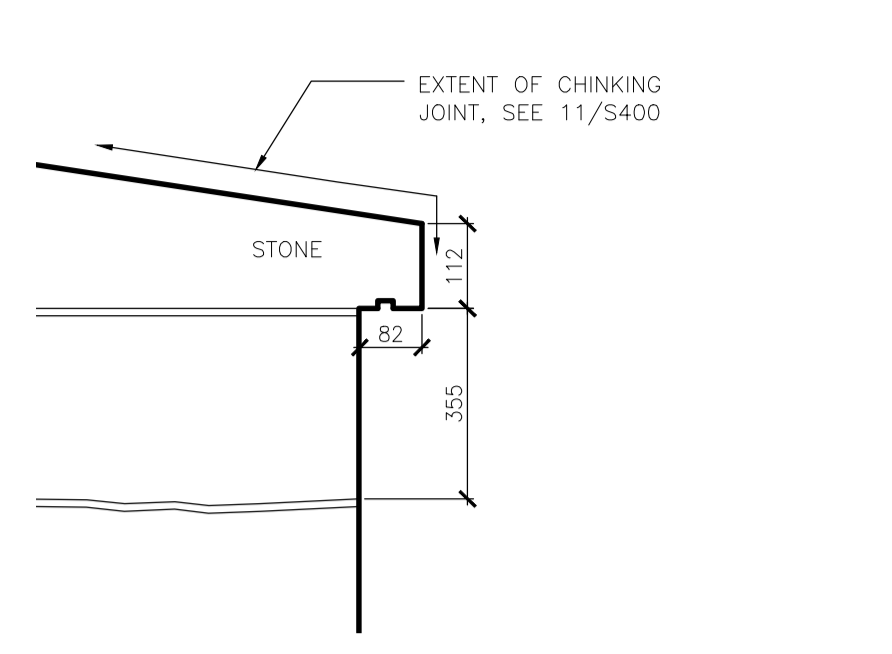
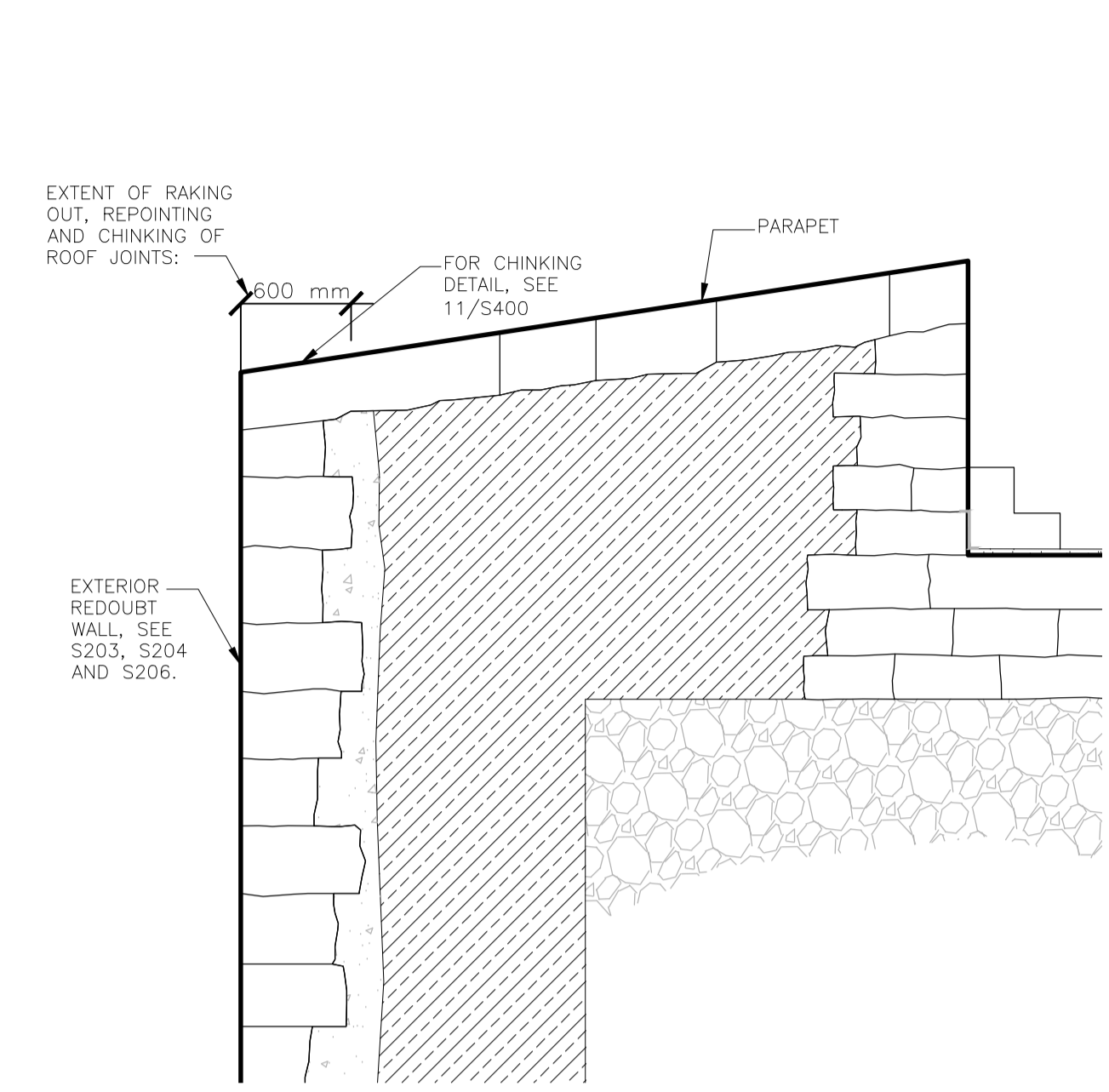
Linear dimensions in millimeters / Dimensions linéaires en millimètres

Project title / Titre du projet
FORT HENRY 2023 MASONRY REHABILITATION
REDOUBT BLOCKS 1,2 & 11

Drawing title / Titre du dessin
MASONRY REPAIR SECTIONS

Plot Scale / Echelle
1:1 (A1 Plot Size)

Drawn by/ Dessiné par	Date	
C.P.	2022/05/23	
Field Recording by / Relevé-Terminé par	Date	
N.M. & J.C.	2022/09/28	
Approved by / Approuvé par	Date	
J.C.	2022/09/28	
Checked by/ Vérifié par	Date	
J.C.	2022/09/28	
Project No./ No. du projet	Asset No.	Sheet No./ Feuille No.
22216		S402
Drawing Re No./No. du Dessin		
22216-S402-RO3		



NOTE: EACH SET OF TWO (2) GROUTED ANCHORS TO BE SPACED AT 1200mm o.c. EACH SET COMPRISES OF ONE (1) GROUTED ANCHOR IN EACH DIRECTION SPACED AT +/- 400mm o.c. UNLESS NOTED OR IDENTIFIED ON SITE BY THE DEPARTMENTAL REPRESENTATIVE.

ALL ANCHORS TO BE SPACED AT 1200mm c/c EACH DIRECTION UNLESS NOTED OR IDENTIFIED ON SITE BY THE DEPARTMENTAL REPRESENTATIVE. PROVIDE ±600mm BETWEEN ANCHORS IN OPPOSITE DIRECTIONS WHERE POSSIBLE.

ALL ANCHORS ARE TO BE INSTALLED INTO THE TOP OF THE QUIN STONES WITH A DROP IN PIN, AS DETAILED IN 3c/S402. IF THE ORIENTATION OF THE STONES DOES NOT ALLOW FOR THE SPECIFIED SPACING TO BE MAINTAINED, ANCHORS MAY BE INSTALLED WITH A SIDE PIN, AS DETAILED IN 3d/S402, AT THE DISCRETION OF THE DEPARTMENTAL REPRESENTATIVE.

WHEN ANCHORING, THERE IS A PRIMARY AND SECONDARY STONE TO BE ANCHORED. IF A SITUATION ARISES WHERE PINNING INTO THE SECONDARY STONE TO BE ANCHORED WILL CAUSE DAMAGE TO THE STONE, IT IS ACCEPTABLE TO ONLY ANCHOR TO THE PRIMARY STONE AT THE DISCRETION OF THE DEPARTMENTAL REPRESENTATIVE.

1. IDENTIFY PROPOSED LOCATION OF ANCHORS AND STONE REMOVALS TO DEPARTMENTAL REPRESENTATIVE PRIOR TO BEGINNING REMOVALS.
2. REMOVE SHADED LIMESTONE AS REQUIRED SUFFICIENT TO CORE HOLE INTO QUIN STONE, SEE 3b/S402.
3. PERFORM CONSOLIDATION, SEE GENERAL NOTES ON DRAWING S101.
4. DRILL 40mm CORE TO A MINIMUM DEPTH OF 1800mm. LOCATE THE CORE APPROXIMATELY 500mm FROM THE WALL FACE IN THE DIRECTION OF DRILLING, WHERE WINDOWS OR DOORS INTERFERE WITH THE SPECIFIED DEPTH, DRILL CORE TO A DEPTH 300mm SHORTER THAN THE DISTANCE TO THE FACE OF THE JAMB STONE. CONFIRM LENGTH WITH DEPARTMENTAL REPRESENTATIVE PRIOR TO DRILLING.
5. CORE THE STONES TO RECEIVE THE ANCHOR PIN AND INSTALL THE ANCHOR AS DETAILED. ADDITIONAL REMOVALS OF LIMESTONE MAY BE REQUIRED TO PLACE THE PIN PROPERLY.
6. RESET THE LIMESTONE AS DETAILED.

