



**RETURN BIDS TO:
RETOURNER LES SOUMISSIONS À:**

See Section 1, STANDARD REQUEST FOR BID
Voir Section 1, INVITATION À SOUMISSIONNER –
STANDARD

No of	
Page/	2
N° de page	

Date of Amendment – Date de modification January 17, 2023
Address inquiries to – Adresser toute demande de renseignement à : See Section 2, Article 4.1., STANDARD REQUEST FOR BID Voir Section 2, Article 4.1, INVITATION À SOUMISSIONNER – STANDARD
Destination See Section 2, Annex A, STANDARD REQUEST FOR BID Voir Section 2, Annexe A, INVITATION À SOUMISSIONNER – STANDARD

**STANDARD REQUEST FOR BID
INVITATION À SOUMISSIONNER - STANDARD**

The Bidder offers to provide to Canada the goods, services or both listed in the bid solicitation in accordance with the conditions set out in the bid solicitation and the prices set out in the bid.

This bid solicitation is issued in accordance with the conditions of the Supply Arrangement E60PQ-140003/PQ.

Le soumissionnaire offre de fournir au Canada les biens, services ou les deux énumérés dans la demande de soumissions aux conditions prévues dans la demande de soumissions et aux prix indiqués dans la soumission.

Cette demande de soumissions est émise conformément aux conditions de l'arrangement en matière d'approvisionnement E60PQ-140003/PQ.

Instructions:

Municipal taxes are not applicable.

Unless otherwise specified in the bid solicitation, all prices quoted must be net prices in Canadian funds including Canadian customs duties, excise taxes, must be FOB, including all delivery charges to destination(s) as indicated. The amount for Applicable Taxes is to be shown as a separate item.

Instructions:

Les taxes municipales ne s'appliquent pas.

Sauf indication contraire dans la demande de soumissions, tous les prix indiqués doivent être des prix nets, en dollars canadiens, comprenant les droits de douane canadiens, la taxe d'accise et doivent être FAB, y compris tous frais de livraison à la (aux) destination(s) indiqué(s). Le montant des taxes applicables doit apparaître séparément.

Solicitation No. - N° de la demande 5P420-22-0038/A PW-22-01011100 Supplier SA No. - N° de l'AMA de fournisseur : E60PQ-140003/___	Amendment No. - N° de modification 008
--	---

Supplier Name and Address – Nom et adresse du fournisseur Telephone No. - N° de téléphone Facsimile No. - N° de télécopieur
Name and title of person authorized to sign on behalf of supplier (type or print) Nom et titre de la personne autorisée à signer au nom du fournisseur (caractère d'impression) Signature : _____ Date : _____

Solicitation closes – La demande prend fin : at – à 14 :00 MST on – le 18 January 2023 See Section 1, STANDARD REQUEST FOR BID Voir Section 1, INVITATION À SOUMISSIONNER – STANDARD	File No. - N° de dossier 5P420-22-0038
---	--

Amendment 008

This amendment is raised to:

- Answer bidder questions;
- Amend Annex A;
- Amend Annex C; and
- Insert Annex D.

A. Questions and Answers

Q1. Can you please confirm if we could substitute the wood veneer returns with laminate returns?

A1. No, Parks Canada will not accept substitution of wood veneer with laminate options.

Q2. The drawings reference a 72" AFF panel height for the 5 POD station and comments "Add on by Client". Kindly advise if these 'Stacks' are to be included in our pricing and if so, where do we include them. The Panel matrix only indicates +/- 54"H panels. Please also clarify what "add on by client" means.

A2. Yes, the "add-on" was intended to be included but was missed in the original tender. Line items for the non-SA panels have been added to Category 1, 2, and 5 for pricing information. See changes to Annex A of the solicitation documents below and the inclusion of Annex D for Non-SA products.

Bidders submitting under Category 1, 2, and 5 MUST submit their bids in accordance with the **Requirement and Basis of Payment** included herein. Bids that are not submitted in accordance with this amendment will be deemed non-responsive to the solicitation requirements.

Q3. Annex C, Instruction to bidders, Cat 1a Requirements, Section 2 Panel Details, Item c Indicates Type of Power feed: Power Pole. However, the floor plans do not indicate Pac Pole, the drawings reference "Power Whip at Wall". Please confirm if type of power is top feed (Power pac pole) or base feed (power whip at wall).

A3. The selection included was incorrect. The power should be base feed (power whip at wall) as per the drawings.

Additional details provided in the change to Annex C below.

Bidders MUST submit their bids in accordance with the **Annex C - Floor Plans** included herein. Bids that are not submitted in accordance with this amendment will be deemed non-responsive to the solicitation requirements.

B. Amend Annex A - Requirement and Basis of Payment Product Categories: 1a, 2, and 5 Table 1

The "Requirement and Basis of Payment" at Annex A of solicitation 5P420-22-0038/A, titled "Office Furniture categories 1a, 2, 3, 4 and 5: Parks Canada Agency – Lake Louise, AB" is amended as included herein. Bidders MUST submit their bids in accordance with the "Requirement and Basis of Payment" included herein. Bids that are not submitted in accordance with this amendment will be deemed non-responsive to the solicitation requirements.

Under Product Categories: 1a, 2, and 5 Table 1 – Product Table

INSERT

NSA products (must not exceed 30% of the firm quantity by category)						
The Supplier signs, and certifies that all the NSA products offered will conform to all specifications and meet the testing requirements detailed at Annex D.						
Section A - IU REQUIREMENT				Section B – SUPPLIER'S BID		
#	NSA Product(s) Description	QTY	** Provide additional Information Yes/No	Supplier Part Number	Firm Unit Price \$	Extended Total [Qty x Price] \$
NSA.1	Panel Add-on 24" x 18" H no power c/o	3	No		\$	\$
NSA.2	Panel Add-on 48" x 18" H no power c/o	3	No		\$	\$
Product Total Sum of all items (1a + 2 + 5 + NSA)						\$

C. Amend Annex C – Floor Plan(s)

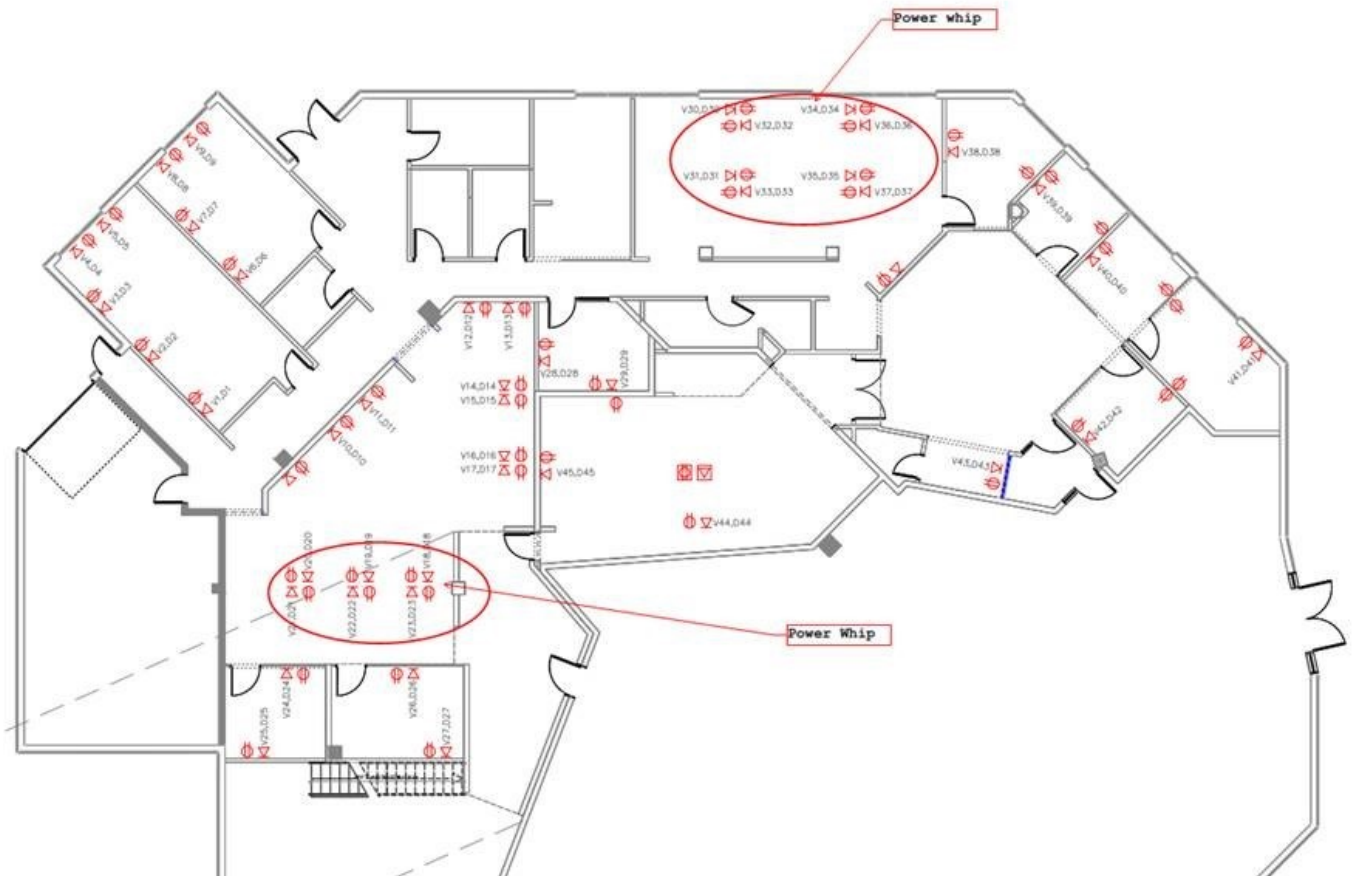
Floor Plan(s) at Annex C of solicitation 5P420-22-0038/A, titled “Office Furniture categories 1a, 2, 3, 4, and 5: Parks Canada Agency – Lake Louise, AB” is amended as included herein. Bidders **MUST** submit their bids in accordance with the “Floor Plan(s)” included herein. Bids that are not submitted in accordance with this amendment will be deemed non-responsive to the solicitation requirements.

DELETE

- c. Type of power feed : power pole.

INSERT

- c. Type of power feed : **power whip at wall. See reference image below:**



D. Insert Annex D – ADDITIONAL SPECIFICATIONS, CERTIFICATIONS

Bidders submitting under Categories: 1a, 2, and 5 are requested to submit a copy on Annex D with their bid package.

INSERT

ANNEX D
ADDITIONAL SPECIFICATIONS, CERTIFICATIONS

This Annex includes the additional Specifications, Certifications associated with NSA product (*if applicable*) forming part of the requirement.

1. Certifications

1.1 NSA Product Conformance (*Required precedent to Issuance of a contract*)

The Supplier certifies that all the NSA products offered will conform to all specifications indicated in Annex A and D of the RFB, and meet the testing and performance requirements found at ANNEX A-1 and A-2 of the Supply Arrangement, as applicable.

Supplier's Signature

Date

NSA Product Conformance Certification (*applies after contract award*)

The Supplier warrants that the NSA Product Conformance Certification submitted by the Supplier with its bid is accurate and complete. The Supplier must keep proper records and documentation relating to the NSA product conformance and the testing requirements in this Annex, as applicable. The Supplier must not, without obtaining the prior written consent of the SAA, dispose of any such records or documentation until the expiration of the Contract or the expiry date of the Warranty, whichever is later. All such records and documentation must at all times during the retention period be open to audit, inspection and examination by the representatives of Canada, who may make copies and take extracts.

In addition, the Supplier must provide representatives of the SAA access to all locations where any part of the Work is being performed at any time during working hours. Representatives of the SAA may examine and test the Work as they see fit. The Supplier must provide all assistance and access to facilities, test pieces, samples and documentation that the representatives of the SAA may reasonably require for the carrying out of the inspection, which may also include the submission of test reporting documentation as listed in Annex A and D. The Supplier must forward such test pieces, samples and/or documentation that may also include letters of certification from the laboratories to such person or location as the representatives of the SAA specifies.

ALL OTHER TERMS & CONDITIONS REMAIN UNCHANGED