

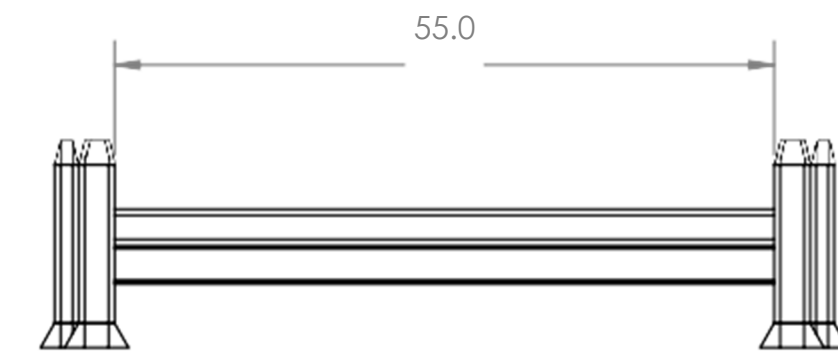
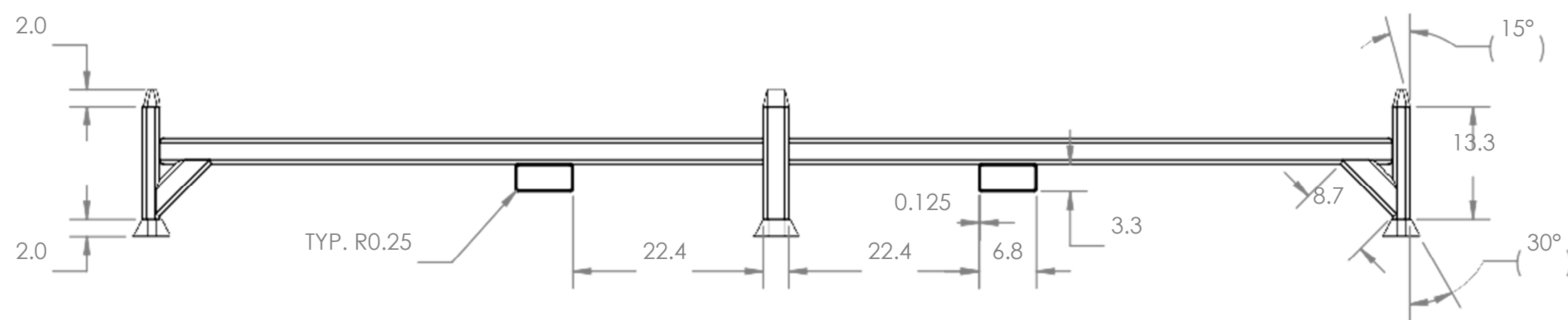
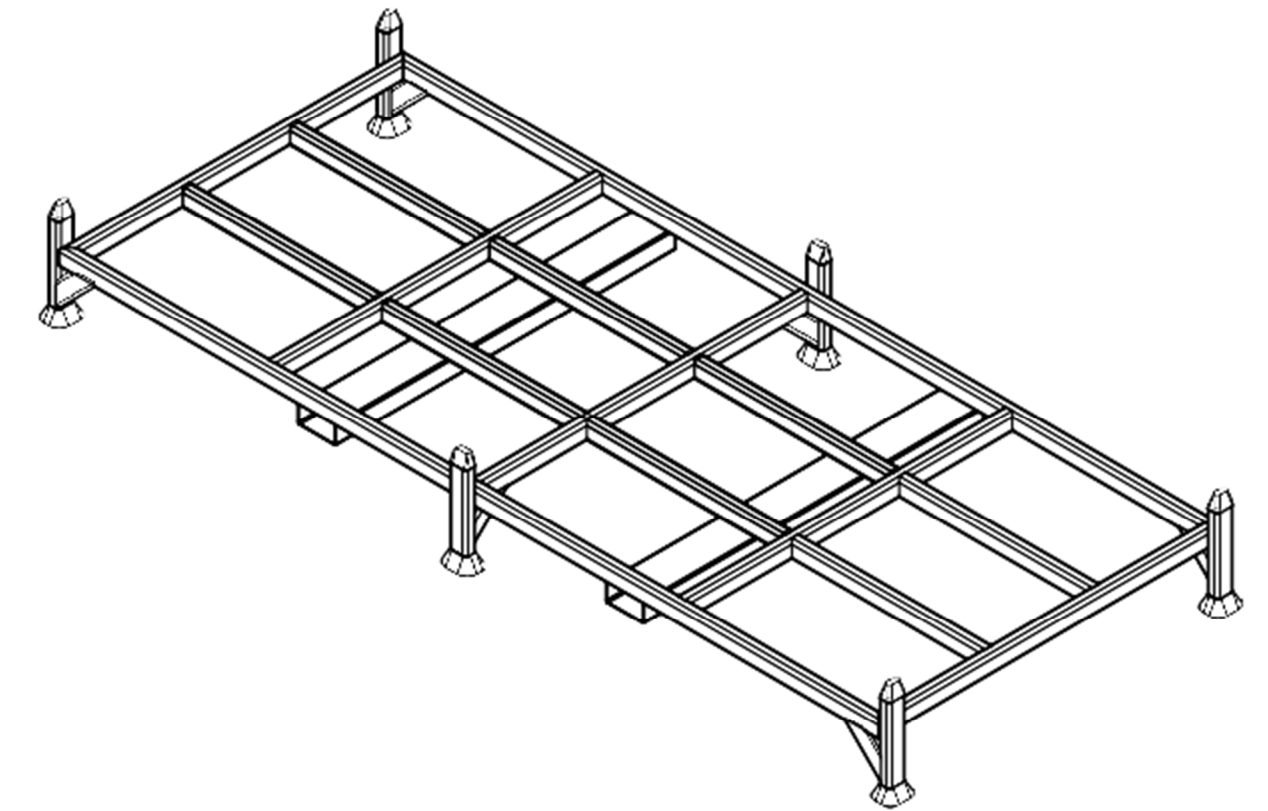
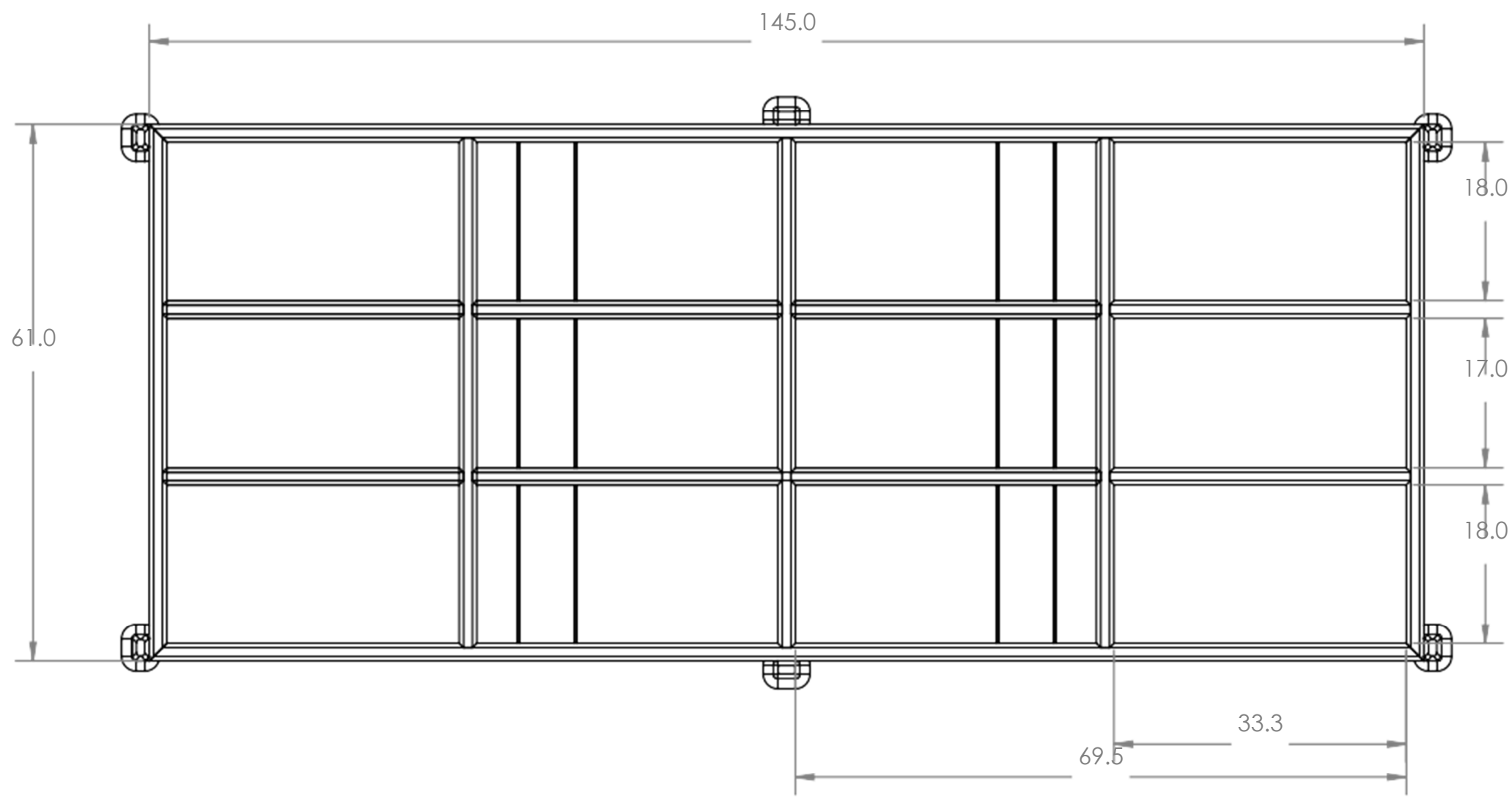


Royal Canadian Mounted Police
Gendarmerie Royale du Canada

Appendice 1 de l'annexe A

Palettes sur mesure pour clôtures de haute sécurité - Dessin

NOTA :
 - TOUS LES TUBES DOIVENT ÊTRE DE 3 PO SUR 2 PO ET ÊTRE RECT.
 - TOUTES LES PIÈCES DOIVENT ÊTRE JOINTES PAR DES SOUDURES
 - TOUS LES TUBES DOIVENT ÊTRE CENTRÉS SUR DES FACES PLANES
 - LES TUBES STABILISATEURS POUR LES TIGES VERTICALES DOIVENT ÊTRE À 45°



UNLESS OTHERWISE SPECIFIED:		NAME	SIGNATURE	DATE	PROJECT	
DIMENSIONS ARE IN INCHES		DRAWN		mm/dd/yyyy	High Security Fence	
TOLERANCES:		CHECKED				
ANGULAR: MACH. .1°		ENG APPR.			TITLE	
FRACTIONAL 1/32		MFG APPR.			Steel Skids for High Security Fence	
TWO PLACE DECIMAL .010"		Q.A.				
THREE PLACE DECIMAL .005"						
BREAK ALL SHARP EDGES .01" - .02"						
INTERPRET GEOMETRIC TOLERANCING PER:		PROPRIETARY AND CONFIDENTIAL				
MATERIAL		THE INFORMATION CONTAINED IN THIS DRAWING IS THE SOLE PROPERTY OF THE RCMP. ANY REPRODUCTION IN PART OR AS A WHOLE WITHOUT THE WRITTEN PERMISSION OF THE RCMP IS PROHIBITED.		SIZE	DWG. NO.	REV
AISI 1020				C	WO28068782	1
FINISH		SCALE: 1:24 WEIGHT: 724.29 lb		SHEET 1 OF 1		
DO NOT SCALE DRAWING						