

GENERAL:

- 1-ALL THE WORK MUST MEET THE REQUIREMENTS OF NBC 2010 LATEST EDITION.
- 2-ALL THE WORK MUST BE PERFORMED ACCORDING TO THE LATEST EDITION OF THE RESPECTIVE CORRESPONDING STANDARD.
- 3-ALL THE DIMENSIONS MARKED ± WILL HAVE TO BE INSPECTED ON THE SITE BY THE CONTRACTOR BEFORE THE BEGINNING OF THE WORK.
- 4-THE CONTRACTOR MUST VERIFY ALL THE DIMENSIONS, LEVELS AND CONDITIONS ON THE SITE AND NOTIFY THE ENGINEER OF ANY ERROR OR OMISSION BEFORE THE BEGINNING OF THE WORK.
- 5-BEFORE MANUFACTURING OF EACH PART BEGINS, THE CONTRACTOR MUST VERIFY ALL THE DIMENSIONS ON THE DRAWINGS AND ENSURE THEY MATCH. THE CONTRACTOR MUST ALSO CONDUCT SURVEYS AND TAKE MEASUREMENTS ON THE SITE SO THAT THE PARTS IT MANUFACTURES ARE A PERFECT MATCH WITH THE EQUIPMENT PARTS, STRUCTURAL PARTS OR OTHER NEIGHBOURING PARTS. NO ADDITIONAL COST WILL BE JUSTIFIABLE FOR A MODIFICATION DUE TO INTERFERENCE WITH ANY EXISTING ELEMENT WHATSOEVER.
- 6-THE CONTRACTOR MUST RESPECT THE CHARACTERISTICS, SPECIFICATIONS AND DEPLOYMENT PROCEDURES OF ALL THE PRODUCTS AND/OR MATERIALS SPECIFIED IN THE PLANS AND NOTIFY ITS REPRESENTATIVE OF ANY POTENTIAL PROBLEM IN ORDER TO TAKE THE CORRECTIVE ACTIONS TO OBTAIN THE EXPECTED FINAL RESULT.
- 7-THE APPLICATION AND DEPLOYMENT OF THE SPECIFIED PRODUCTS AND/OR MATERIALS MUST COMPLY WITH THE MANUFACTURER'S REQUIREMENTS.
- 8-DESPITE THE FACT THAT DIFFERENT PRODUCTS AND/OR MATERIALS HAVE BEEN SPECIFIED IN THE PLANS, THE CONTRACTOR IS SOLELY RESPONSIBLE FOR THEIR FINAL PERFORMANCE. THE CONTRACTOR MUST CONDUCT THE NECESSARY VERIFICATIONS (SUBSTRATUM, ENVIRONMENT, SITE CONDITIONS, ETC.) BEFORE UNDERTAKING THE WORK.
- 9-ALL THE MANUFACTURER'S PRODUCTS MUST BE DEPLOYED ACCORDING TO ITS RECOMMENDATIONS AND UNDER THE SUPERVISION OF THE MANUFACTURER OR ITS REPRESENTATIVE.

USE OF THE SITE:

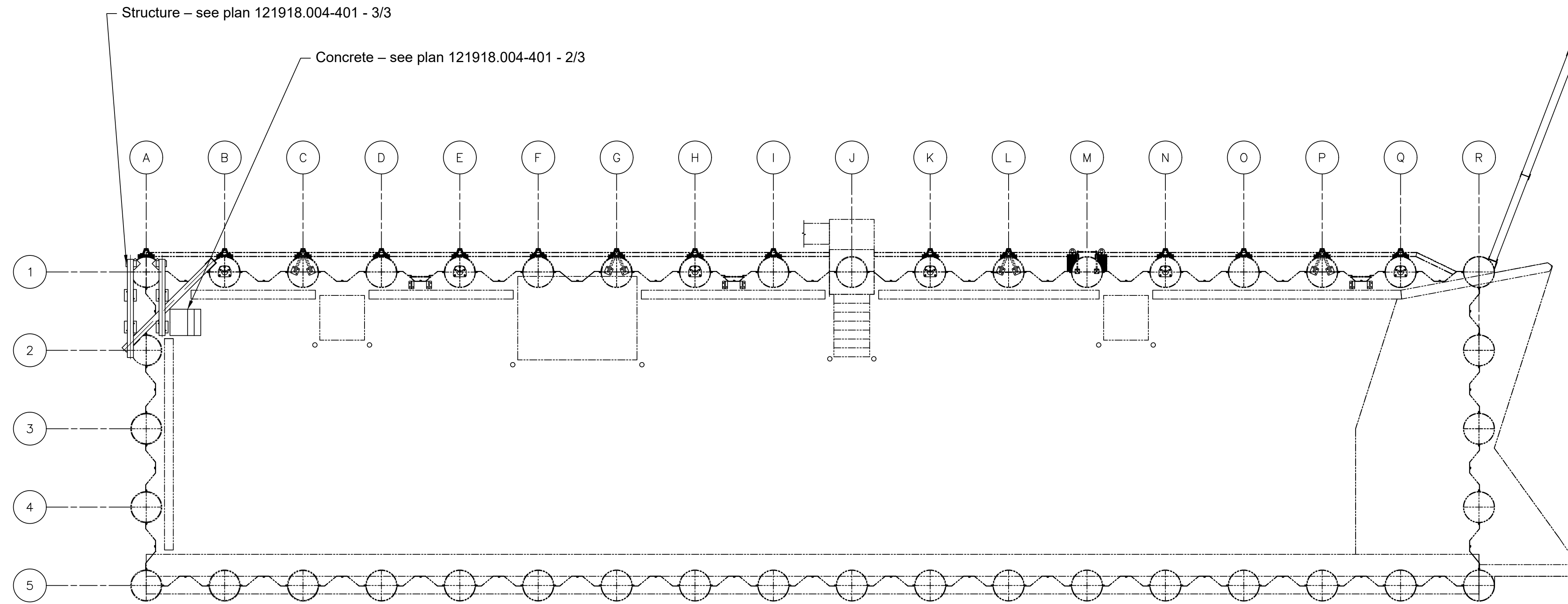
- 1- THE WORK SHALL BE PERFORMED IN A PLANT IN OPERATION AND, AS A GENERAL RULE, THE PRODUCTION ACTIVITIES SHALL HAVE PRIORITY OVER THE CONSTRUCTION ACTIVITIES. CONSEQUENTLY, THERE WILL BE NO COMPENSATION FOR LOSSES OF THE CONTRACTOR'S TIME. CERTAIN CONSTRUCTION ACTIVITIES WILL NECESSITATE DISTURBANCES IN NORMAL OPERATIONS, WHICH WILL HAVE TO BE PLANNED AND DISCUSSED IN ADVANCE WITH THE PROJECT LEADER.
- 2- THE SURFACES AND THE WORKS FOUND OUTSIDE THE WORK ZONES MUST BE RESTORED TO THE CONDITION IN WHICH THEY WERE FOUND BEFORE THE BEGINNING OF THE WORK OR IN ACCORDANCE WITH THE REQUIREMENTS FOR THE ADJACENT SURFACES.
- 3- ANY MATERIAL OR EXECUTION THAT WILL NOT COMPLY WITH THE REQUIREMENTS OF THE PLANS AND SPECIFICATIONS WILL BE REJECTED. THE WORK WILL HAVE TO BE REDONE BY THE CONTRACTOR AT NO ADDITIONAL COST FOR THE BUYER.
- 4- IF THE CONTRACTOR WISHES TO PROPOSE A DIFFERENT WORK METHOD THAT WOULD ALLOW REDUCTION OF THE INSTALLATION COSTS AND/OR LEAD TIMES, IT IS INVITED TO SUBMIT THIS METHOD WITH ITS BID FORM.
- 5- PRODUCE ALL THE USUAL WORK MENUS NECESSARY FOR THE COMPLETION OF THE WORK REQUIRED BY THE PLANS AND SPECIFICATIONS.
- 6- F THE SUPPLIER'S INTERPRETATION SUGGESTS A CONTRADICTION AMONG THE PLANS, SPECIFICATIONS AND/OR PURCHASE REQUISITION, THE SUPPLIER MUST CONSULT THE PROJECT LEADER BEFORE PERFORMING THE WORK.
- 7- REPAIR, AT THE CONTRACTOR'S EXPENSE, ANY WORK DAMAGED OR DISTURBED BY THE CONTRACTOR, TO THE PROJECT LEADER'S SATISFACTION.
- 8- GIVEN THE FACT THAT THE SPECIFICATIONS DO NOT NECESSARILY SPECIFY OR THE PLANS DO NOT NECESSARILY INDICATE ALL THE WORK AND EQUIPMENT, CONDUCT ALL THE SURVEYS AND INSPECTIONS NECESSARY ON THE SITE FOR THE COMPLETE ASSESSMENT OF THE SCOPE AND SUPPLY ALL THE MATERIALS AND EQUIPMENT NECESSARY AND INDISPENSABLE SO THAT THE WORK IS COMPLETE AND COMPLIANT WITH ALL THE TRADE REQUIREMENTS AND RESPONDS TO THE REAL INTENTION OF THE PLANS AND SPECIFICATIONS.

EXAMINATION OF THE PREMISES:

- 1- VISIT THE PREMISES WHERE THE WORK WILL BE EXECUTED TO BECOME FAMILIAR WITH EVERYTHING THAT COULD AFFECT IT. NO CLAIM CAUSED BY IGNORANCE OF LOCAL CONDITIONS WILL BE RECOGNIZED BY THE OWNER.

DEMOLITION:

- 1- THE CONTRACTOR MUST REMOVE FROM THE SITE ALL MATERIALS AFTER THEIR DEMOLITION AND/OR DISMANTLING AND WILL DISPOSE OF THEM AT THE LOCATION AGREED IN ADVANCE OR REMOVE THEM OFF SITE AT ITS EXPENSE.
- 2- THE DEMOLITION METHOD MUST BE PRESENTED FOR APPROVAL TO THE DESIGN ENGINEER AT LEAST 1 WEEK BEFORE THE BEGINNING OF THE WORK.



PLAN VIEW
1:25

FOR INFORMATION

ISSUED	REV.	DO	MM	YY	DATE	ISSUED FOR	BY	DRAWING #	TITLE	#	DESCRIPTIONS	INT.	DO	MM	YY	DATE	BY	APP	#	DESCRIPTIONS	INT.	DO	MM	YY	DATE	BY	APP

PROFESSIONAL SEAL



Norda Stelo Inc.
1015 Av. Wilfrid-Pelletier
Québec, Québec
Canada G1W 0C4
Phone: 418-654-8600
norda.com



PROJECT: LES ESCOUIMINS-PILOT DOCK
BREAKWATER DOCK ADDITION OF A PILOT TOWER

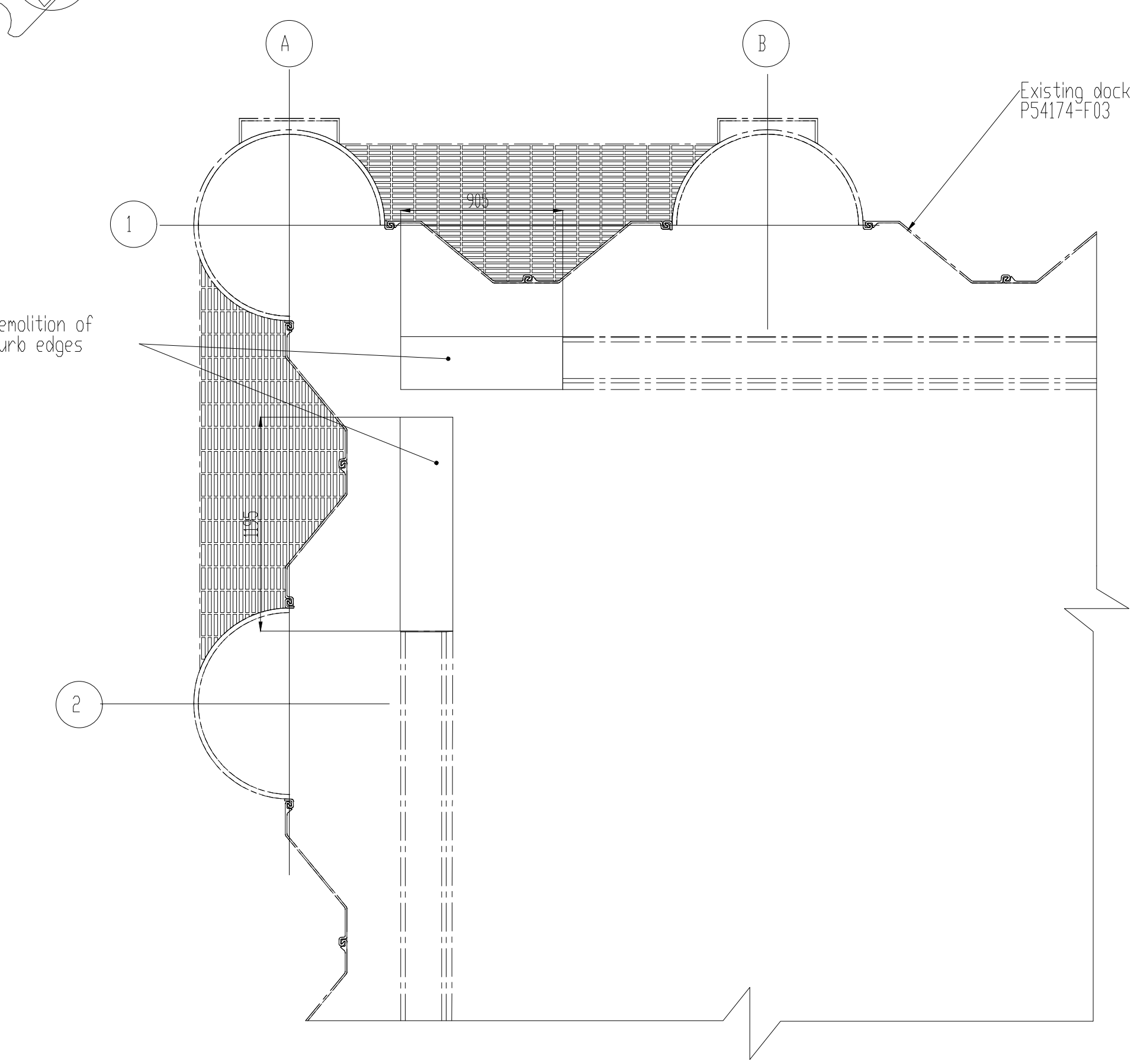
ENGINEERING

Designed by: -
Drawn by: FELOMAKI ELVINA
Verified by: -
Approved by: -

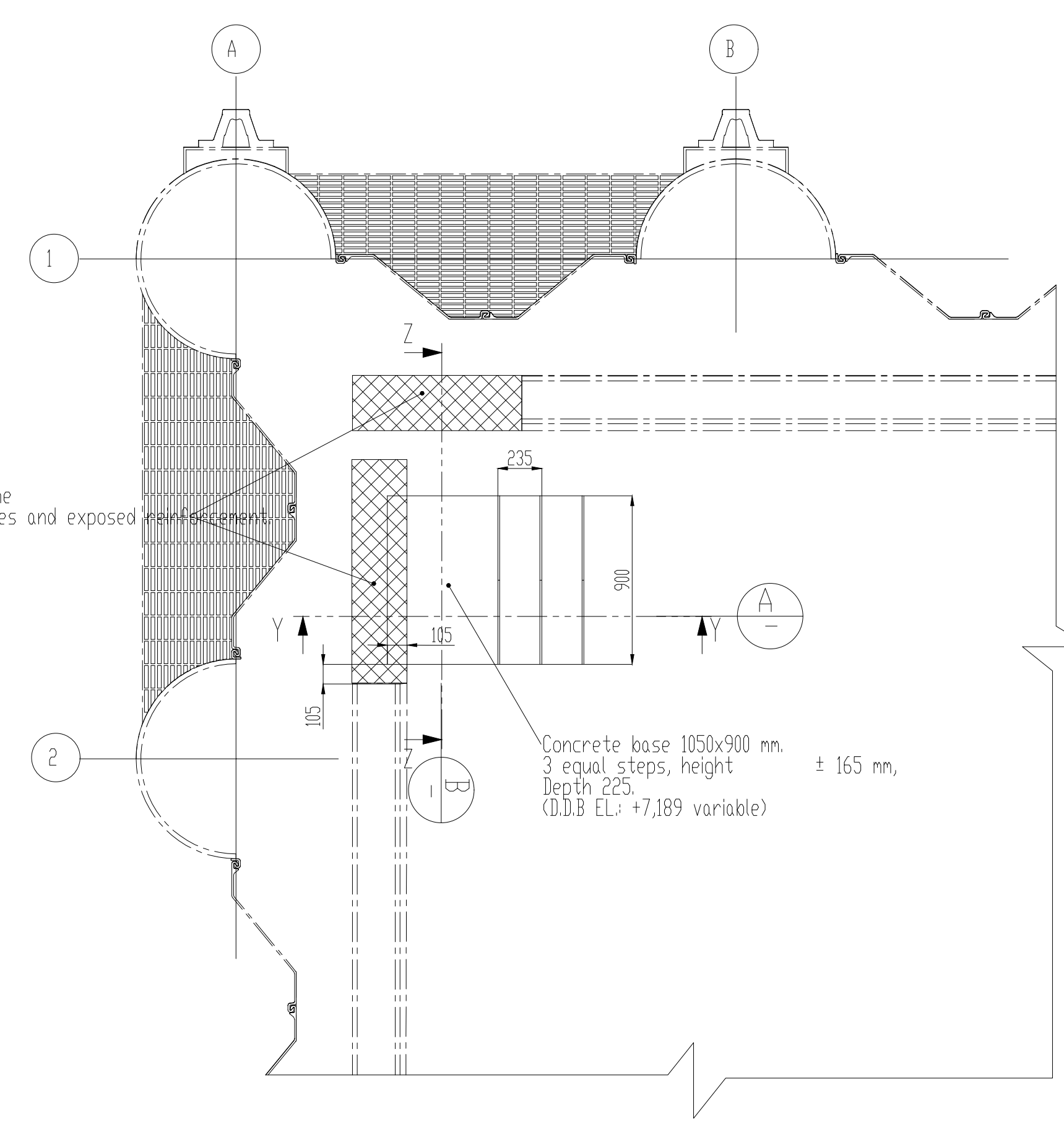
TITLE: LOCATION PLAN

Scale: 1:25
INIT. DATE

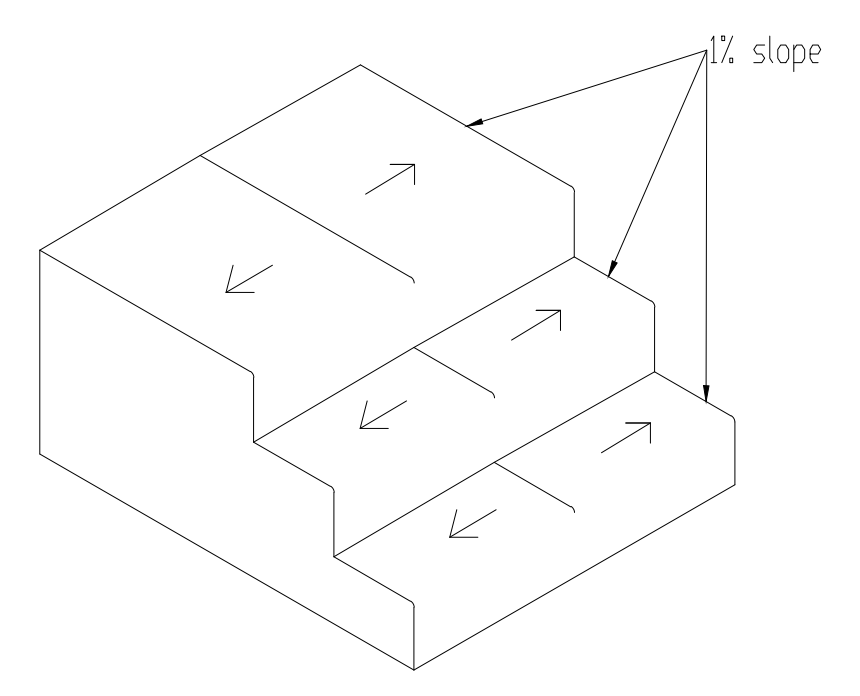
PROJECT # 121918.001
DRAWING # 121918.001-401
REV. 02
PAGE 1 of 3



DEMOLITION PLAN VIEW
1:25 AM

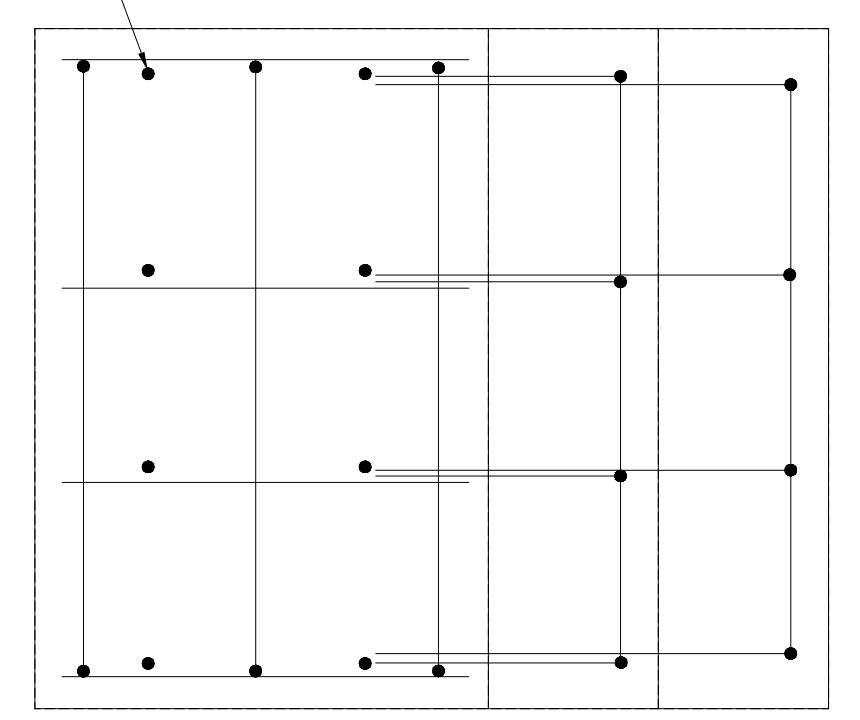
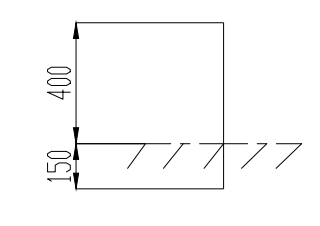


NEW CONCRETE PLAN VIEW
1:25 AM



Epoxy point to cover the demolished concrete zones and exposed reinforcement.

8- 15M chemical anchors with HILTI HY-200, 150 mm sag



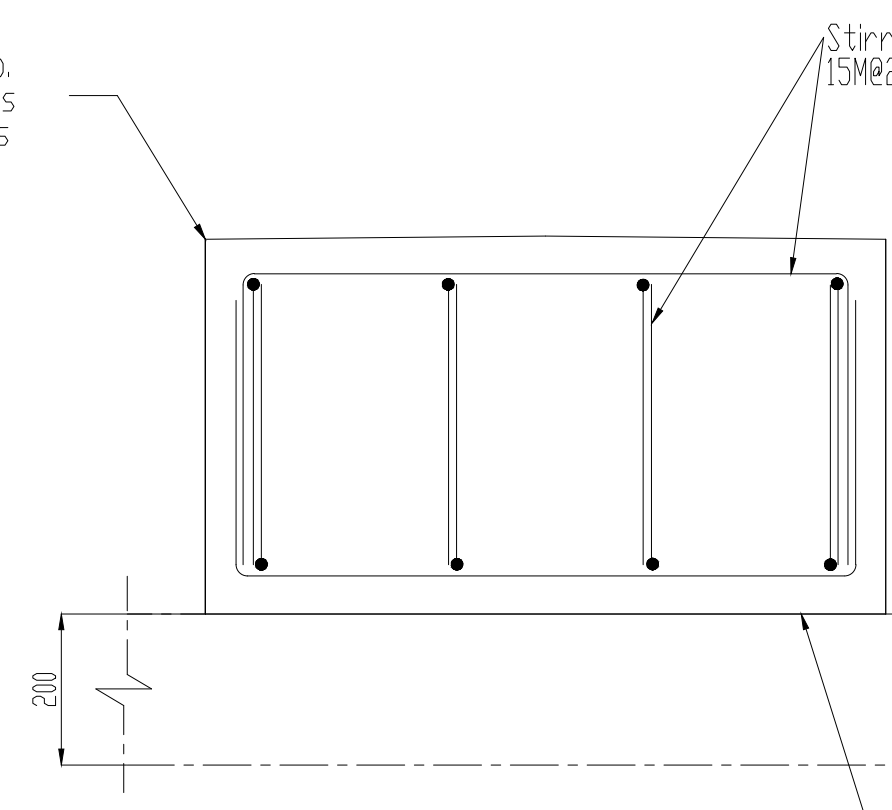
UPPER LEVEL REINFORCEMENT PLAN VIEW
1:10

- CONCRETE:**
- 1-CONCRETE WILL BE PLACED ACCORDING TO CAN/CSA A-23.1 LATEST EDITION.
 - 2-ALL CONCRETE WILL HAVE THE FOLLOWING CHARACTERISTICS:
 - EXPOSURE CLASS: C-1
 - 35 MPa FOR 56 DAYS, TYPE 2 CEMENT, GRANITE AGGREGATES 14 @ 20 mm
 - AIR CONTENT: 5 @ 8%
 - SUBSIDENCE AT UNLOADING POINT: 130 mm ± 30 mm
 - MAXIMUM WATER/BINDER RATIO: 0.4
 - 3-SURFACE PREPARATION:
 - ANY SURFACE INTENDED TO COME INTO CONTACT WITH NEW CONCRETE MUST BE FREE OF ANY TRACE OF DIRT, OIL, GREASE OR OTHER FOREIGN SUBSTANCES THAT COULD IMPEDE THE CONCRETE'S ADHERENCE. REMOVE ALTERED OR DETERIORATED CONCRETE. ENSURE THAT THE APPLICATION SURFACE IS ROUGH ENOUGH AND AT AN ADEQUATE TEMPERATURE.
 - 4-THE REINFORCING STEEL WILL BE CRENELLATED WITH HIGH ADHERENCE AND GRADE 400W IN ACCORDANCE WITH THE MOST RECENT EDITION OF CAN/CSA A23.1 & A23.2.
 - 5-COVERING OF THE REBAR MUST COMPLY WITH CAN/CSA A23.1 LATEST EDITION.
 - 50 mm (2") OTHER POURED CONCRETE (S.I.C.)
 - 75 mm (3") POURED CONCRETE ON GROUND. (S.I.C.)
 - 6-ALL SHARP EDGES WILL HAVE A CHAMFER OF 20 x 20 mm. (S.I.C.)
 - 7-ALL HOOKS MUST BE STANDARD ACCORDING TO CAN/CSA A-23.1 (S.I.C.) LATEST EDITION.
 - 8-CONCRETE FINISHING ON HORIZONTAL SURFACES WILL BE BRUSHED FINISH.

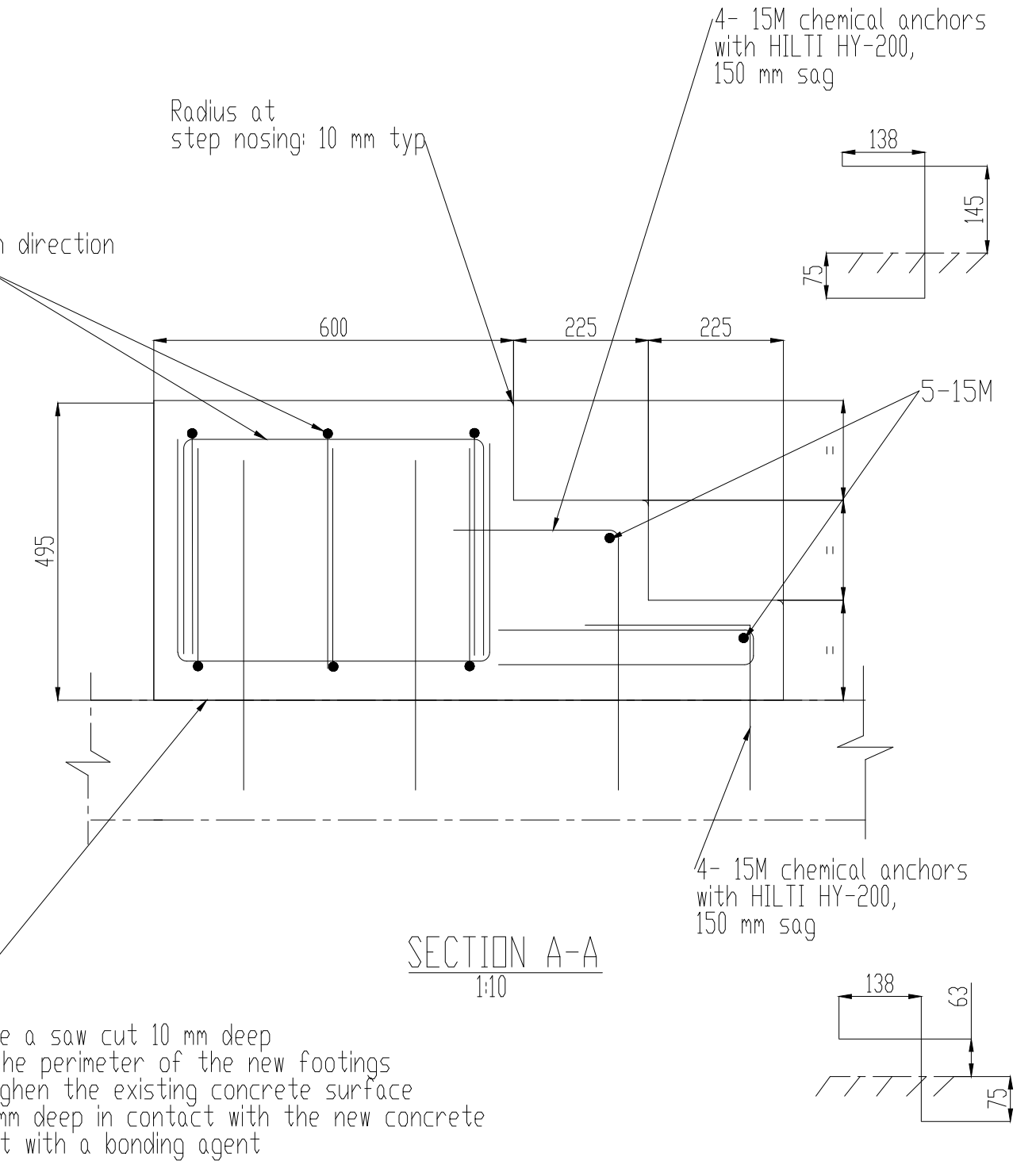
FORMWORK PERIOD AND CURING OF CONCRETE WORKS:

- 1-WALL: WAIT AT LEAST 48 HOURS BEFORE FORM REMOVAL AND ENSURE CURING OF THE WALLS BY WATERING THEM FOR AT LEAST 72 ADDITIONAL HOURS.
- 2-IN HOT OR COLD WEATHER, THE CONTRACTOR MUST FOLLOW THE RECOMMENDATIONS OF CAN/CSA A23.1 LATEST EDITION.
- 3-DO NOT USE FORMWORK TIES.
- 4-CURING IS ESSENTIAL FOR OPTIMIZATION OF THE PHYSICAL PROPERTIES OF CONCRETE AND REDUCTION OF PLASTIC SHRINKAGE.
- 5- THE CONTRACTOR MUST CURE THE CONCRETE (WATER-BASED MOIST CURING OR WATER-BASED CHEMICAL CURING) WITH A PRODUCT APPROVED BY THE DESIGN ENGINEER.

Chamfer 15x15 typ. On all sharp edges except for steps



SECTION B-B
1:10



SECTION A-A
1:10

FOR INFORMATION

Make a saw cut 10 mm deep on the perimeter of the new footings
 - Roughen the existing concrete surface
 - 20 mm deep in contact with the new concrete
 - Coat with a bonding agent

ISSUED	REV.	BY	DATE	ISSUED FOR	BY	DRAWING #	TITLE	DESCRIPTIONS	INT.	DR.	CHK.	APP.	BY	APP.	DATE	DESCRIPTIONS	REVISIONS

PROFESSIONAL SEAL



Norda SteLo Inc.
1005 Av. Vézina-Pelletier
Dorval, Québec
Canada H4V 2K4
Phone: 438-654-9600
nordastelo.com



ENGINEERING

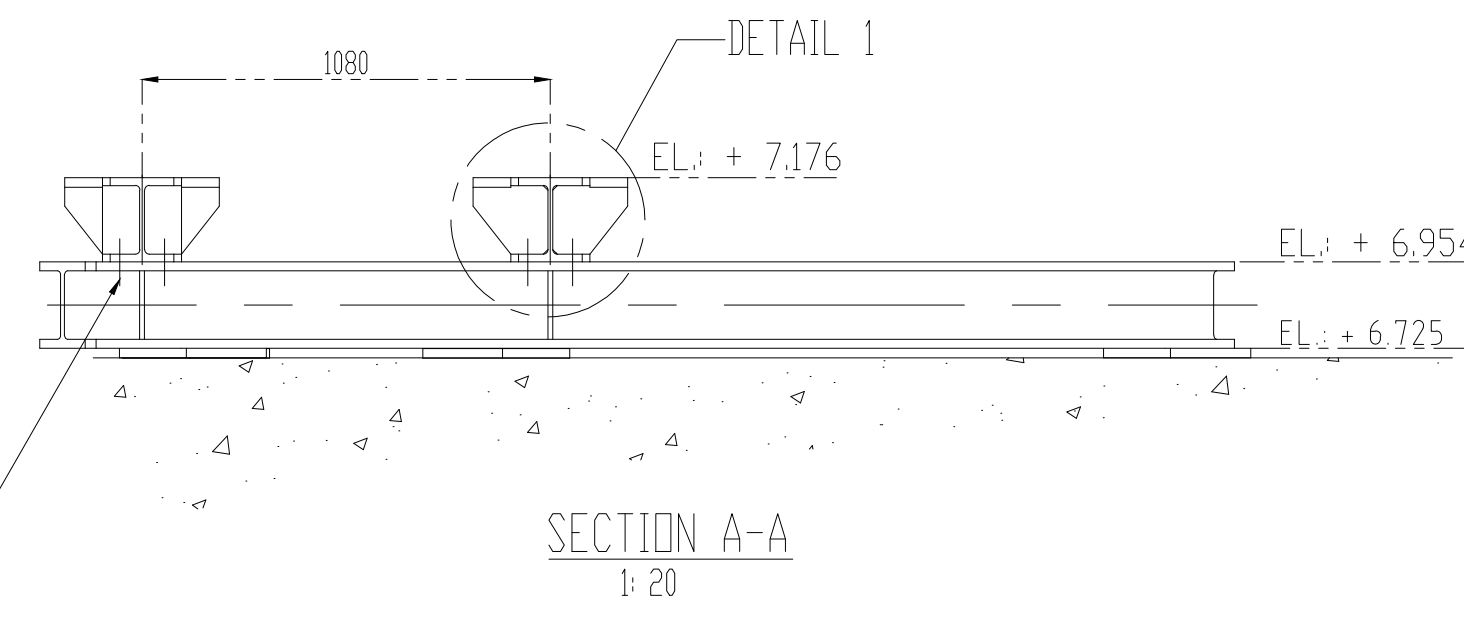
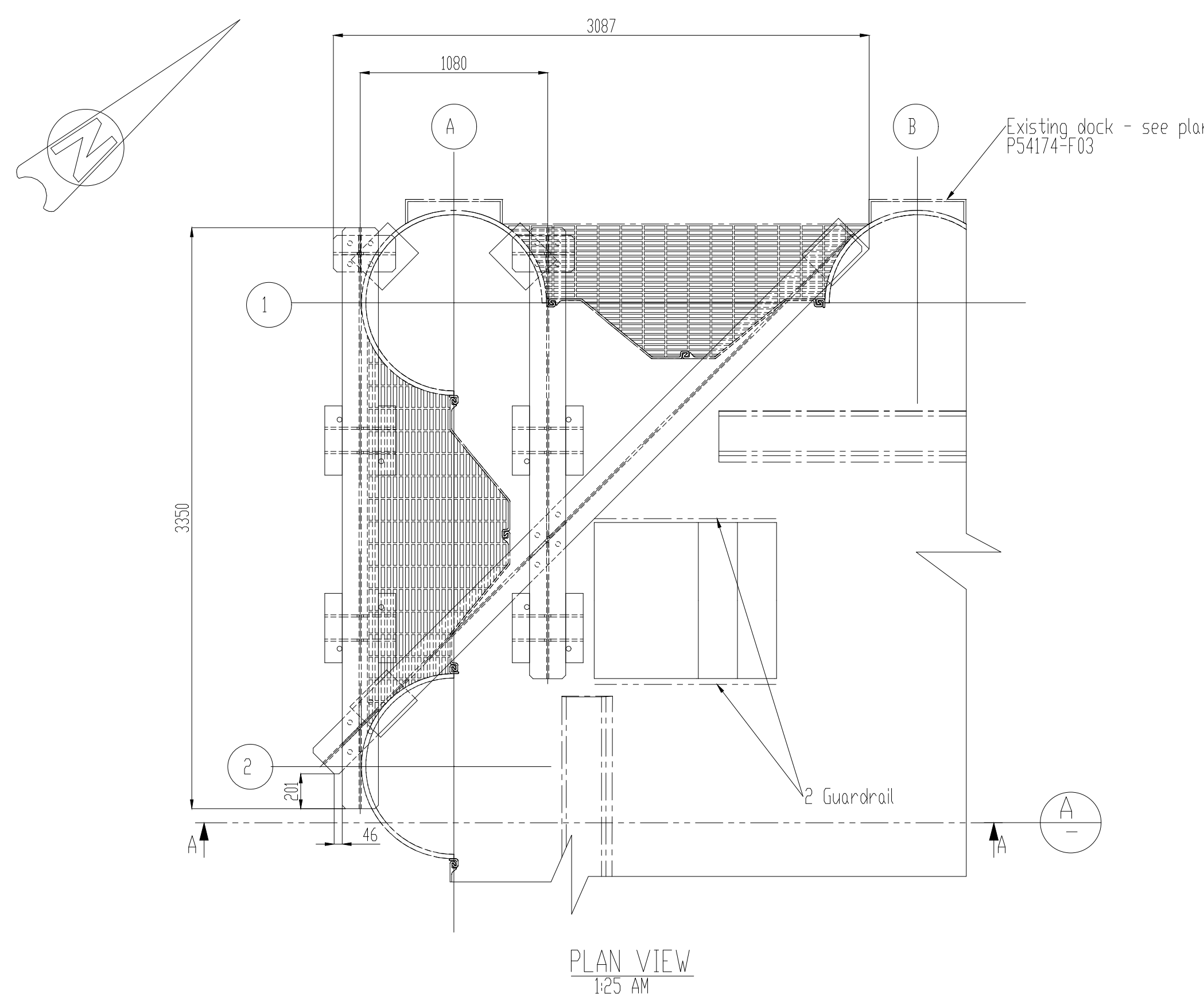
LES ESCADONS-PILOT DOCK
BREAKWATER DOCK
ADDITION OF A PILOT TOWER

Designed by: -
 Drawn by: FELDMAN ELVINA
 Verified by: -
 Approved by: -

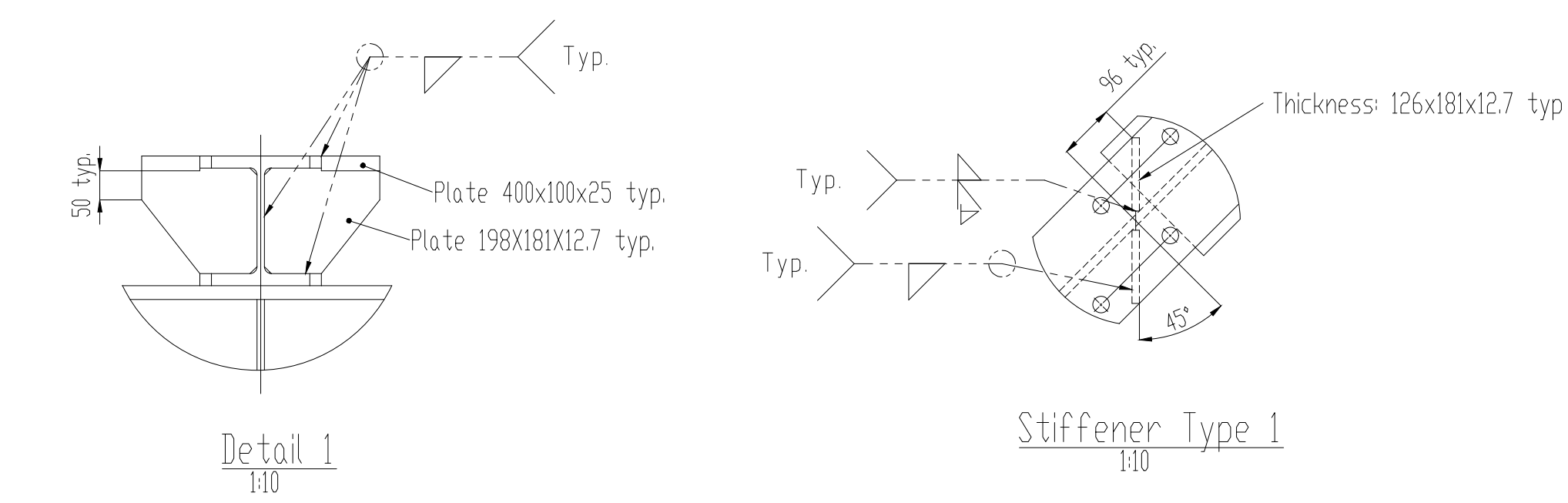
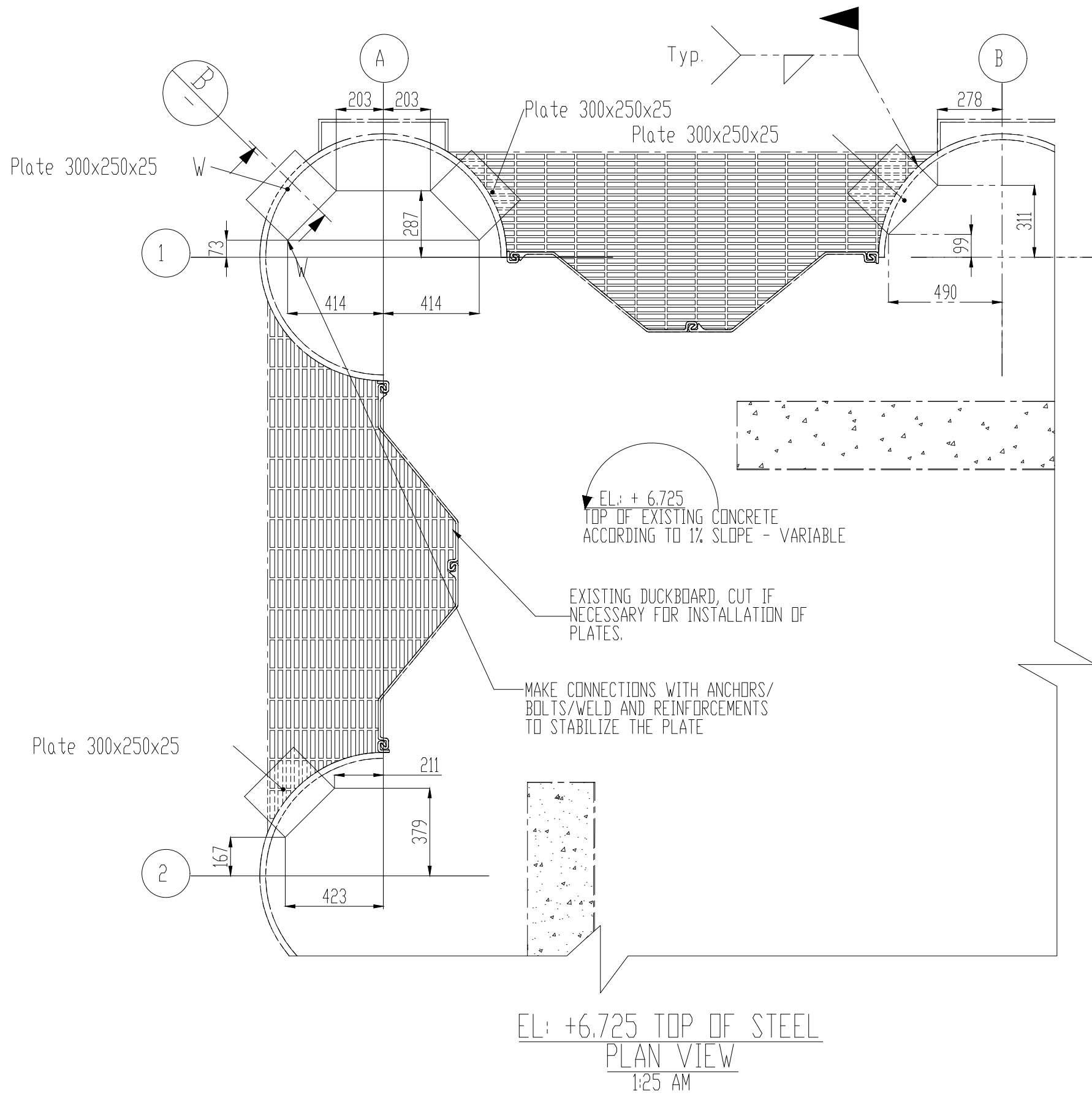
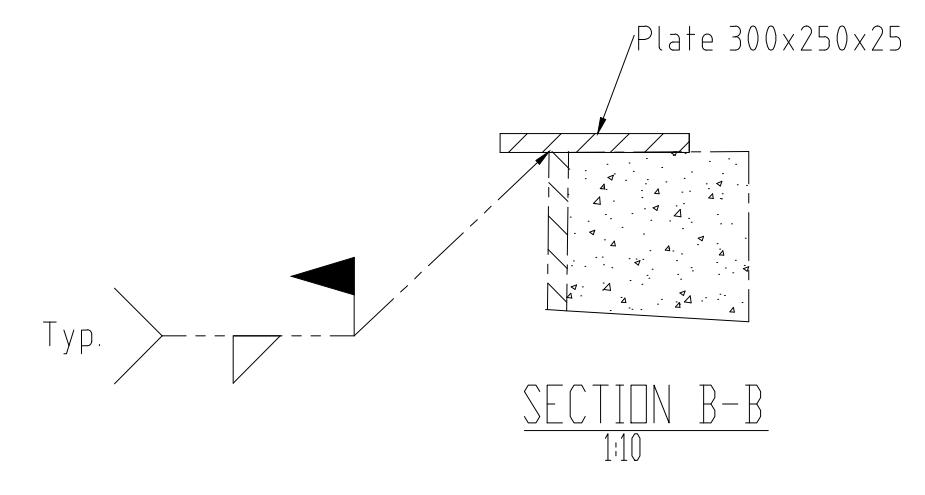
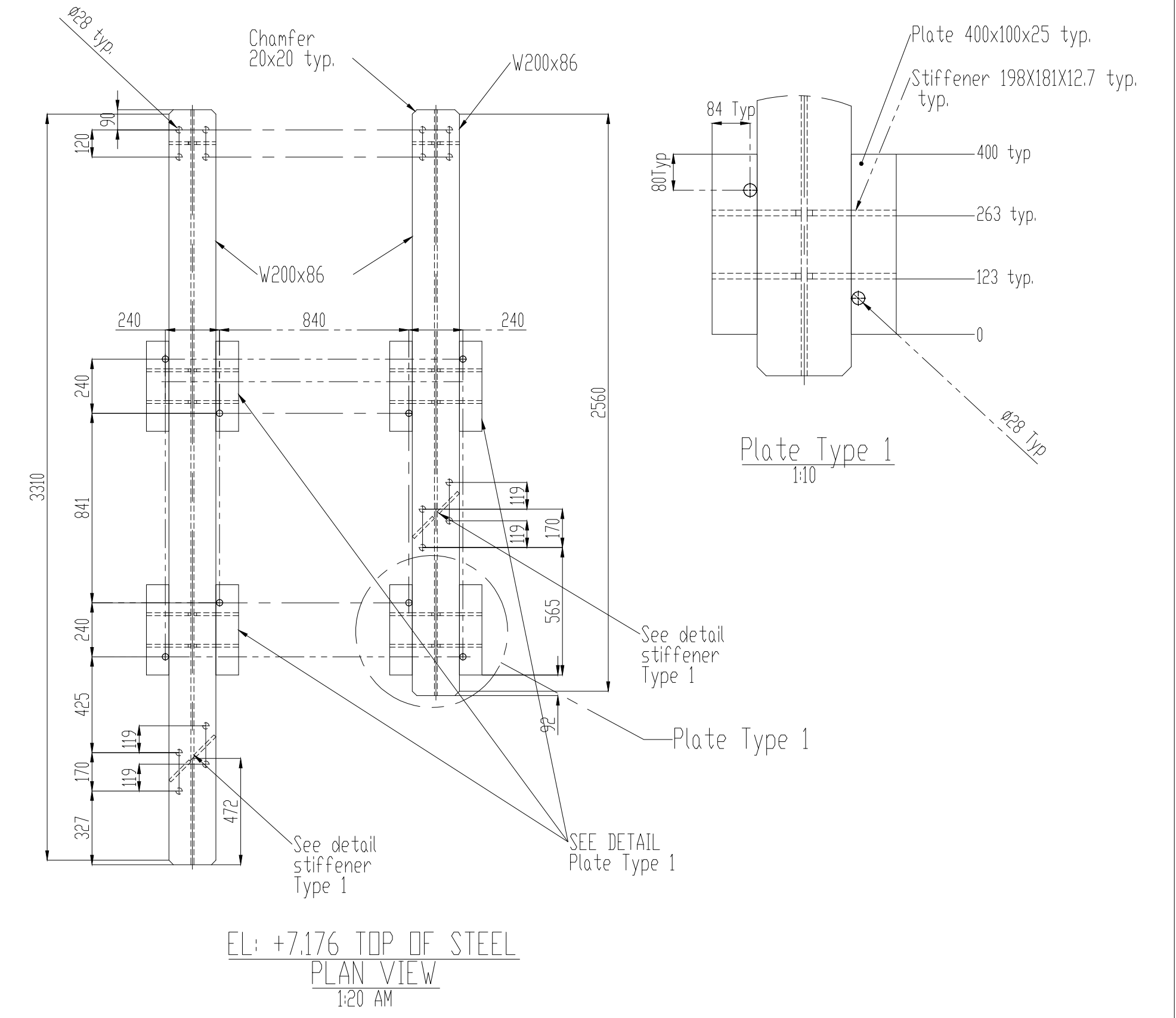
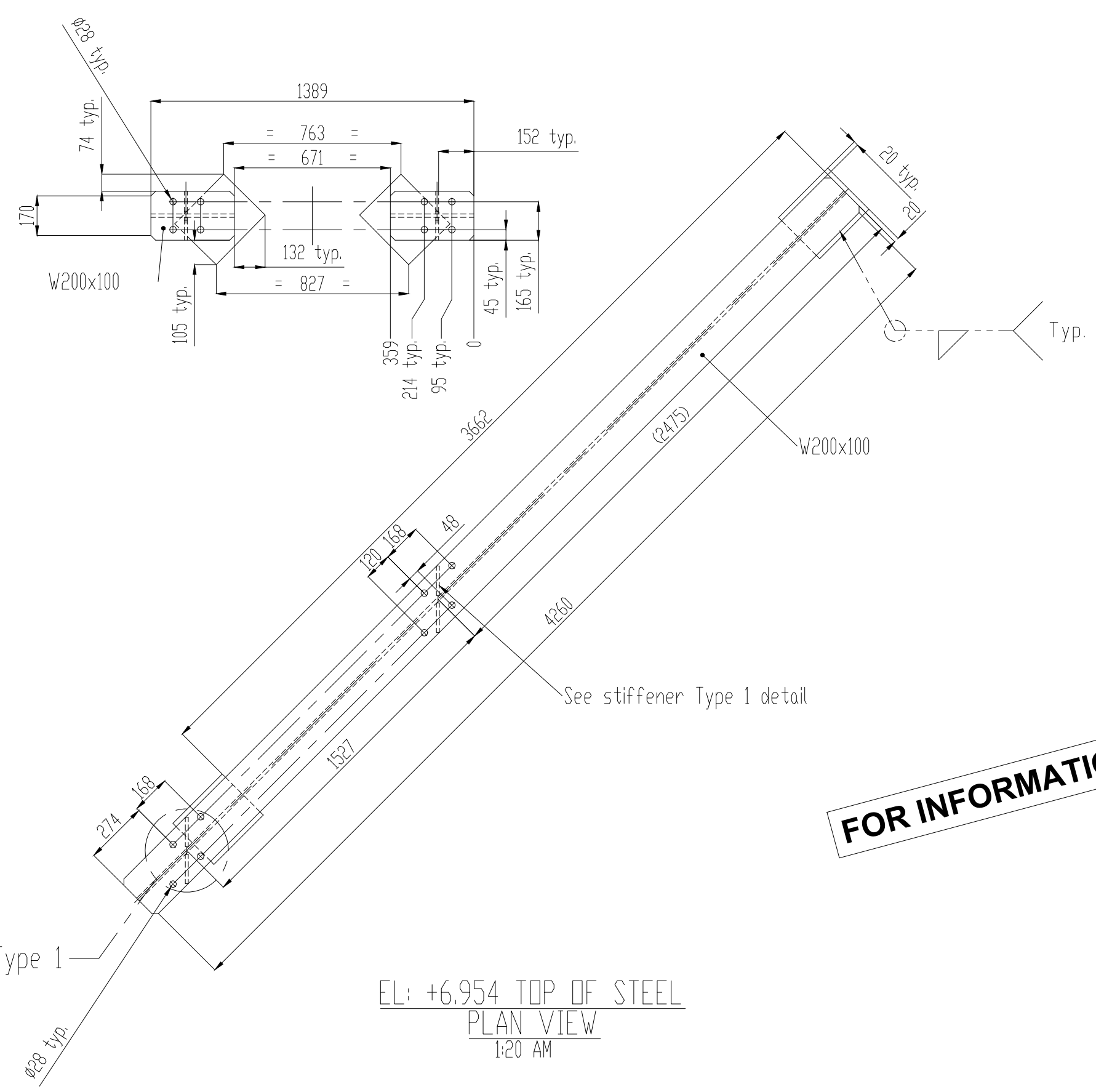
PROJECT # 121918.001
 DRAWING # 121918.001-401
 REV. 03
 PAGE 2-3

Scale: Variable
 DATE

DATE



Bolts 25 mm DIA. Galvanized with washer and nuts - Thread excluded from the typical shear axis



FOR INFORMATION

- STRUCTURAL STEEL:**
- 1-ALL STRUCTURAL STEEL WORK WILL COMPLY WITH THE LATEST EDITION OF CAN/CSA S16.
 - 2-THE STRUCTURAL STEEL WILL COMPLY WITH CAN/CSA G40.21-F04, GRADE 350 W (S1.C).
 - 3-THE GALVANIZED STEEL BOLTS, NUTS AND WASHERS WILL COMPLY WITH ASTM F325/ F3125M TYPE 1.
 - 4-THE WELDS MUST BE PRODUCED ACCORDING TO CAN/CSA W-59 AND 47.1 (LATEST EDITION).
 - 5-ALL SHARP EDGES MUST BE GROUND AFTER MANUFACTURING.
 - 6-BEFORE SHAPING ELEMENTS, INSPECT THE EXISTING STATE OF THE WORK AND NOTIFY THE ENGINEER OF ANY DIMENSIONAL VARIANCE OR POTENTIAL CONNECTION PROBLEM TO OBTAIN INSTRUCTIONS.
 - 7-BEFORE PROCEEDING TO MANUFACTURE STRUCTURAL STEEL, THE CONTRACTOR MUST PROVIDE THE SHOP DRAWINGS SIGNED AND SEALED BY AN ENGINEER IN GOOD STANDING, MEMBER OF THE ORDRE DES INGENIEURS DU QUEBEC. THE REVIEW OF THE SHOP DRAWINGS BY THE ENGINEER HAS THE SOLE OBJECTIVE OF ENSURING THEIR COMPLIANCE WITH THE GENERAL CONCEPT. THIS REVIEW DOES NOT MEAN THAT THE ENGINEER APPROVES THE DETAILED DESIGN ATTACHED TO THE SHOP DRAWINGS, FOR WHICH THE CONTRACTOR REMAINS RESPONSIBLE.
 - 8-THE CONTRACTOR WILL HAVE TO DO TOUCH-UPS ON THE GALVANIZED STEEL AFTER DISCOVERY OF DEFECTS, WELDING WORK OR OPENINGS NOTED. REPAIRS MUST BE PERFORMED IN COMPLIANCE WITH ASTM A-780. THE DRY FILM OF THE COATING CHOSEN MUST CONTAIN AT LEAST 92% METALLIC ZINC. THE PRODUCT MUST BE APPLIED ACCORDING TO THE MANUFACTURER'S RECOMMENDATIONS AND THE PART TO BE REPAIRED MUST BE SUITABLY PREPARED.
 - 9-CALCULATE THE ASSEMBLIES SO THAT THEY WITHSTAND THE STRESSES EXERTED BY THE UNIFORMLY DISTRIBUTED MAXIMUM LOAD THAT CAN BE SUPPORTED SAFELY BY THE BENDING GIRDS, IN CONDITION THEY ARE NOT SUBJECTED TO ANY CONCENTRATED LOAD.
 - 10-WELD INSPECTION:
 - 100% VISUAL INSPECTION;
 - SPLICES AND PLATES: 100% MAGNETIC PARTICLE INSPECTION
 - OTHER: 25% MAGNETIC PARTICLE INSPECTION

ISSUANCE REGISTER				REFERENCE DRAWING				REVISIONS				REVISIONS				PROFESSIONAL SEAL				<p>NORDA STELO</p> <p>Norda Stelo Inc. 105 Av. Vézina-Pelletier Dorval, Québec Canada H4V 2E4 Phone: 438-654-9600 nordastelo.com</p> <p>Administration des Laurentides</p> <p>LES ESCOUMINS-PILOT DOCK BREAKWATER DOCK ADDITION OF A PILOT TOWER</p> <p>ENGINEERING</p> <p>DESIGNED BY: -</p> <p>DRAWN BY: FELDMAN ELVINA</p> <p>VERIFIED BY: -</p> <p>APPROVED BY: -</p> <p>Scale: Variable</p>												
ISSUED	REV.	BY	DATE	ISSUED FOR	BY	DATE	TITLE	DESCRIPTION	INT.	DR.	APP.	BY	DATE	DESCRIPTION	INT.	DR.	APP.	BY	DATE	DESCRIPTION	INT.	DR.	APP.	BY	DATE	DESCRIPTION	INT.	DR.	APP.	BY	DATE	DESCRIPTION
				P54174-F26			Moorings bollards, lambs fenders and B fender with support - section and detail							03				ISSUED FOR INFORMATION - ENGLISH TRANSLATION														
				P54174-F03			Proposed breakwater, detailed plan view							02				ISSUED FOR SUBMISSION FOLLOWING CLIENT COMMENTS														
				P54174-F02			Proposed breakwater, plan view and definition of piles							01				ISSUED FOR SUBMISSION														