

TABLE OF CONTENTS

Section 1 – Invitation and Instructions to Bidders

Section 2 – Resulting Contract including a list of required goods and services

SECTION 1 – INVITATION AND INSTRUCTIONS TO BIDDERS

Step 1. For Tier 2 and Tier 3 only (If Tier 1, skip this step and proceed with step 2)

Step 2. Competitive or Non-Competitive

For competitive Requirements when only one bid is received:

A bid must comply with the requirements of the bid solicitation and meet all mandatory technical evaluation criteria to be declared responsive. The responsive bid with the lowest evaluated price will be recommended for award of a contract.

For Competitive Requirements when only one bid is received:

The Bidder must provide the following information AFTER bid closing, if requested to do so by Canada:

- One or more of the following price justifications:
 1. a current published price list indicating the percentage discount available to Canada; or
 2. a copy of paid invoices for the like quality and quantity of the goods, services or both sold to other customers; or
 3. a price breakdown showing the cost of direct labour, direct materials, purchased items, engineering and plant overheads, general and administrative overhead, transportation, etc., and profit; or
 4. any other supporting documentation as requested by Canada.

For Non-Competitive Requirements:

The Bidder must provide the following information WITH the bid:

- One or more of the following price justifications:
 1. a current published price list indicating the percentage discount available to Canada; or
 2. a copy of paid invoices for the like quality and quantity of the goods, services or both sold to other customers; or
 3. a price breakdown showing the cost of direct labour, direct materials, purchased items, engineering and plant overheads, general and administrative overhead, transportation, etc., and profit; or
 4. any other supporting documentation as requested by Canada.

Step 3. General or PSIB

For PSIB procurement:

Canadian Content:

The Supplier should propose conforming products(s) denoted as “Canadian Content” in the Supplier’s SA. Canada may preference all bids containing products(s) with this designation.

Terms of the RFB:

This RFB is issued pursuant to the Supplier’s Furniture for Workspaces Supply Arrangement (SA) that forms part of the series of SAs issued by PWGSC with the number E60PQ-140003/PQ. The terms and conditions in the Supplier’s SA apply to and form part of this RFB. Bidders who submit a bid agree to be bound by those terms and conditions as well as the terms and conditions in this RFB.

The WTCM is the Workspaces Terms and Conditions Manual that contains all terms and conditions in full text that form part of individual RFBs under this SA.

The Bidder must provide the following information WITH the bid:

- The information requested by Canada in Annex A herein.

The Bidder must also provide the information at article 4 below at the time indicated in article 3.

Security Requirement:

1. Conditions
 - a. the Bidder must hold a valid organization security (VOS) clearance as indicated in Annex B;
 - b. the Bidder's proposed individuals requiring access to classified or protected information, assets or sensitive work site(s) must meet the security requirement as indicated in Annex B.
2. For additional information on security requirements, bidders should refer to the Canadian Industrial Security Directorate (CISD), Industrial Program of Public Works and Government Services Canada (<http://ssi-iss.tpsgc-pwgsc.gc.ca/index-eng.html>) website.
3. The conditions in article 1 above must be met by the Bidder:

Before the award of a contract. Bidders are reminded to obtain the required security clearance promptly. Any delay in the award of a contract to allow the successful bidder to obtain the required clearance will be at the entire discretion of the Contracting Authority.
4. Bidders are to supply the following information, as a minimum, to demonstrate compliance with the Security Requirement.
 - a. The Bidder's valid VOS clearance number issued by CISD;
 - b. The name of all individuals who will require access to classified or protected information, assets or sensitive work sites. It is desirable to also include their date of birth, their middle name, and their security clearance number issued by CISD.

Bid Evaluation

An evaluation team composed of representatives of Canada will evaluate the bids.

RFB Issued by:	
Identified User's (IU) Department/Agency/Crown Corporation: Contact for this RFB:	See Section 2, article 4.1 below.
RFB Closing - Submit Bid: Bids must be submitted on the date and at the time indicated below.	
By no later than date and time:	[2023-04-17] [14:00] [EDT]
To e-mail address:	nc-solicitations-gd@hrsdcc.gc.ca
RFB Enquiries:	
Unless a different period is listed in the adjacent column, Bidders may submit enquires about the RFB to the Contracting Authority two business days prior to the RFB closing date. Enquiries received after the timeline indicated may not be answered.	<u> 3 </u> business days

SECTION 2 - RESULTING CONTRACT CLAUSES

1.	Terms and Conditions of the Contract	
	The terms and conditions of Parts 6B and 6C of the Supplier's SA within the series E60PQ-140003/PQ apply to and form part of this Contract.	
2.	Security Requirement (the checked article applies)	
2.1	The applicable security requirement(s) is (are) set out in the Security Requirement Check List attached as Annex B of this contract. The Contractor must fulfill the security requirements by meeting the terms below.	
a.	<input type="checkbox"/>	Contractor may be escorted; possession of security clearance not required. Contractor personnel MAY NOT ENTER NOR PERFORM WORK ON sites where PROTECTED or CLASSIFIED information or assets are kept, without an escort provided by the department or agency for which the work is being performed.
b.	<input checked="" type="checkbox"/>	Possession of security clearance(s) is required. The Contractor must meet the security clearance requirements contained in the clausing in Annex B herein.
c.	<input type="checkbox"/>	There is no security requirement associated with this contract.
3.	Requirement	
3.1	The Contractor must perform the Work listed in Annex A herein.	
4.	Authorities	
4.1	Contracting Authority (IU)	
	Name:	Azlyn Roslan
	Title:	Procurement Specialist
	Department/Agency/Crown Corporation:	Employment and Social Development Canada
	Address:	140 Promenade du Portage, Gatineau, QC
	Telephone No.:	<i>[To be completed at contract award]</i>
	E-mail address:	nc-solicitations-gd@hrsdcc.gc.ca
4.2	Project Authority <i>[To be completed at contract award]</i> <i>The Project Authority (PA) is the representative of the department or agency for whom the Work is being carried out under the Contract including the provision to approve the authority to proceed for delivery and installation and is responsible for all matters concerning the technical content of the Work under the Contract.</i> <i>In addition, the PA is also responsible for ensuring that the Supplier's employees and subcontractors requiring access to the site adhere to the allocated time for the Supplier to access the site to deliver and install the furniture in accordance with the master schedule held by the General Contractor (a representative of Canada or a service provider(s) under contract with the Government of Canada).</i>	
	Name:	
	Title:	
	Department/Agency/Crown Corporation:	
	Address:	
	Telephone No.:	
	E-mail address:	
4.3	Contractor's Representative	
	As set out in Annex A, Table 9 below.	
5.	Method of Payment	
	The checked box applies.	
	<input type="checkbox"/>	Single Payment
	<input checked="" type="checkbox"/>	Multiple Payment
6.	Invoicing	
	Further to the Invoicing terms of the WTCM document, the Contractor will deliver the original and one copy of the invoice to the following address for certification and payment:	
	Name of the organization and contact: <i>[To be completed at contract award]</i>	

	Address:
--	----------

**ANNEX A
REQUIREMENT and BASIS OF PAYMENT**

1. Category Selection

Combined Categories Rule:

For reasons of compatibility, the following categories will be combined for evaluation and contract award purposes:

The rule only applies to the categories below that are checked. The unchecked categories will be evaluated separately and may be awarded to multiple suppliers;

Category 1

Category 2

Category 5

*** Exception: when using the Cat 1, 2, 5 combined categories rule, IU's may calculate the percentage of NSA product allowed (as defined in their solicitation document) against the total quantity of the combined categories.**

Design Upgrade Rule:

The IU may exercise an option to upgrade products up to 20% of each Category product total before Applicable Taxes after contract award.

The Design Upgrade amount is used at the discretion of the Project Authority (PA) **prior to the manufacturing/ordering of the products**, the PA will provide the Contractor with a written notice of Canada's Design Upgrade choices for each of the product(s) to be upgraded. The Contractor will provide the pricing of the upgraded product(s) to a maximum of 20% of each Category Contract Price of Table 8. The Contracting Authority will issue an amendment to the contract with the Design Upgrades and pricing.

The Supplier certifies that all the Design Upgraded products offered will conform to all specifications and meet the testing requirements detailed in the Specifications of the Supply Arrangement.

Design Upgrade: is the process of replacing a product with a more innovative or enhanced version of the same product.

NSA:

NSA products can be incorporated in the RFB and must not exceed 30% of the firm quantity by category. NSA items must be added to the category that is most closely related and must be generic.

The requirement includes the following category (ies) of work:

a. Category 1 – Interconnecting Panels and Freestanding Systems

Category 1a – Interconnecting Panels (Refer to Annex C)

Category 1b – Supporting components and freestanding furniture

RULE: Metal Storage

Identified Users may procure metal storage products forming part of Category 1 when the metal storage products will be part of a requirement for a workstation(s)/work point(s). If this rule does not apply, Category 3 must be used for the metal storage products forming part of this category.

b. Category 2 – Freestanding Height Adjustable Desk / Table Products

c. Category 3 – Metal Filing and Storage Cabinets

Identifying the maximum height of the Personal Storage Towers, Wardrobes and Storage Cabinets is acceptable as per 6B. 4.1 of the SA (table 1 Additional product details)

d. Category 4 – Wood Veneer – Freestanding Products

e. Category 5 – Ancillary and Lighting Products

f. Category 6 - Support Space – Collaborative Furniture

RULE: Category 6 can be further subdivided by space or like product in order to increase or allow competition. Space is defined as a location available for a particular purpose such as a meeting room space or a collaborative space. Like products are defined as products with similar design and construction. If NSA products form part of the requirement, the IU must validate the 30% NSA prior to subdividing the category. NSA products can be added to any subdivide or in its own subdivide.

The IU must identify how Category 6 will be subdivided in the Product Table for Category 6.

g. NSA Product(s) – Category(ies): 3 & 6.

2. Product and Pricing Tables

INSTRUCTIONS TO BIDDERS: Bidders are to complete Sections B of the tables identified by the IU in this article as well as Tables 8 and 9. **Bidders must provide a complete product offering for each category, or CAT 6 sub-divide they wish to submit a bid in order to be compliant.**

Refer to article 6A.7 for instructions on how to submit products that are not approved in product listing.

In a resulting contract, the term “Bid” means the Supplier’s commitment, the term “Bidder” means “Contractor”.

Product Categories: 3 & 6

Table 1 – Product Table – Category 3, Category 6

Section A - IU REQUIREMENT				Section B – SUPPLIER’S BID			
#	GoCUID	Description of Product <i>(Additional product details may be inserted, if required as per 6B. 4.1 of the SA)</i>	QTY	** Provide additional Information Yes/No	Supplier Part Number	Firm Unit Price \$	Extended Total [Qty x Price] \$
1	3FLT5DXXPM36D18XXXK (CAT 3)	Lateral 5 drawer filing cabinet Finish: Painted metal (white) Dimensions: 36” L x 18” D With keyed lock Delivery: CSC Laval	1	Yes		\$	\$
1a	3FLT4DXXPM36D18XXXS (CAT 3)	4-drawer Secured Lateral Filing Cabinet 36” w x 18” d	12	Yes		\$	\$

		Finish: painted metal (white) Dimensions: 36" width x 18" depth x 51 1/8" height Secured Filing Cabinet Keyless with a digital lock With combination lock Delivery: CSC Laval					
2	3WHDHXXPM36D18HIXS (CAT 3)	Wardrobe 2 hinged doors Finish: Painted metal (white) Dimensions : 36 w x 18 d x 44 to 54 h Delivery: CSC Longueuil	4	Yes		\$	\$
3	3FLT4DXXPM36D18XXXS (CAT 3) Item removed – Item # 3 is not supposed to have a GoQUID number	Lateral 4 drawer filing cabinet Finish: Painted metal (white) Dimensions: 36" L x 18" D x 51 1/8" h With combination lock Delivery: CSC Laval and Thetford Mines	2	Yes		\$	\$
4	3FLT3DXXPM36D18XXXS (CAT 3)	Lateral 3 drawer filing cabinet Finish: Painted metal (white) Dimensions: 36" L x 18" D x 44 to 54 h With electronic lock on each of the 3 drawers Delivery: CSC Thetford Mines	4	Yes		\$	\$
5	6MTRXTRECL24L48WYYY (CAT 6)	Meeting Table Dimensions: L48xW24xH29 Fixed top, on casters with Lock Rectangular shape Material - laminate T or Y Legs - it doesn't matter Power/Data - No Modesty panel - YES Casters - YES Laminate finish Color: Maple Delivery: CSC Laval, CSC Pointe-Claire, CSC Sainte-Anne des Monts, CSC Longueuil	27	Yes		\$	\$
6	6MTRXTRELL24L48WYYY (CAT 6)	Meeting Table Dimensions: L48xW24xH29 Fixed top, on casters with Lock	1	Yes		\$	\$

		Rectangular shape Material - laminate Post legs Power/Data - Yes Modesty panel – NO Casters – YES Laminate finish Color: maple Delivery: CSC Laval					
7	6MTRFTRECL30L60WYYY (CAT 6)	Meeting Table Dimensions: L60xW30xH29 Flip Top size Rectangular shape Material - laminated T or Y - Legs Power/Data - No Modesty - NO Casters - YES Laminate finish Color: maple Delivery: CSC Laval	10	Yes		\$	\$
8	6MMTSMSQLL36L36WNNX (CAT 6)	Table for kitchen Dimensions: L36xW36xH29 Shape Square Material - laminated Post Legs = 4 black legs Power/Data - No Modesty - NON Casters - NO Laminate finish Color: maple Legs color: black Delivery: CSC Laval, CSC Sainte-Anne des Monts, CSC Complexe Guy Favreau Montréal East Tower, 6th Floor	4	Yes		\$	\$
9	6CCTVAROLL36XXXJNXX (CAT 6)	Coffee Table Dimensions: Diameter 36 x H 14-21 SIZE Variable Shape Round Material - Laminate Support - 4 post Legs Power/Data - NON Color: maple Delivery: CSC Laval	1	Yes		\$	\$
10	6MMTSMROPL30XXXWNNX (CAT 6)	Meeting Table Dimensions: Diameter30 x H29 Style Bistro Fixed height Shape Round Material - Laminate Support Pedestal Power/data - NON Modesty panel – Non Delivery: CSC Laval	1	Yes		\$	\$

11	6CCMVAROPL30XXXPNXX (CAT 6)	Collaborative Table Dimensions: Diameter 30 x H41-43 Style Bistro Size : Variable Shape Round Material - Laminate Support - Pedestal Poser/Data - NO Modesty panel – No Delivery: CSC Laval, CSC Pointe-Claire	2	Yes		\$	\$
12	6SMORBXXLU25G19LYNN (CAT 6)	Soft Seating / Modular Bench Dimensions: W25 to 39 x D>19 x H16 to 19 Size – Rectilinear bench Banquette with backrest bolster Material - upholstered Finish - Fabric Support – Legs Back Height - YES Modesty - NO Armrest – NO The Backrest of different color than the seat **Important: The backrest – Must have the same height as the three-seat seat back, as they will be placed together Delivery: CSC Laval	1	Yes		\$	\$
13	6SBBTHXXLUW5G19LMNN (CAT 6)	Banquette with backrest bolster / Three Seater Dimensions: W64 x D>19 x H16 to 20 Size - Three Seater Banquette with backrest bolster Material - upholstered Finish – Fabric Support – Legs Back Height – Mid back Modesty - NO Armrest – NO The Backrest of different color than the seat Important: The backrest – Must have the same height as the back of Modular Bench, as they will be placed together Delivery: CSC Laval	4	Yes		\$	\$

14	6KBSBHxxLY15XXXRONX (CAT 6)	Kitchenette chair/ Bar stool (without armrests) Dimensions - Seat depth>15 x Height 28 to 32 Armrest - NO Seat cushions - NO Material - Polymer Support - 4 Legs Bar Height This chair is for the round Bistro Style table 6CCMVAROPL30XXXPN XX **Rest foot Pied – YES Delivery: CSC Laval, CSC Pointe-Claire	4	Yes		\$	\$
15	6MTRXTRELL30L36WYYN (CAT 6)	Table for kitchen Dimensions: L36xW30xH29 Rectangular shape Material - laminated Post Legs = 4 black legs Fixed Top Power/Data - No Modesty - NON Casters - NO Laminate finish Table Color: maple Legs color : black Delivery: CSC Pointe-Claire, CSC Longueuil	12	Yes		\$	\$
16	6SLCWAXXWUXXXXMXXX (CAT 6)	Lounge Chairs – Soft Seating Soft seating Material - upholstered Rest area chair With armrest – 27” Wide Minimum Support - Swivel Height 27" Min The backrest and the Seat – have the same color Delivery: CSC Pointe-Claire, CSC Longueuil, CSC Complexe Guy Favreau Montréal East Tower, 6th Floor	7	Yes		\$	\$
17	6KBSBHxxSY15XXXRINX (CAT 6)	Kitchenette chair/ Bar stool (with armrests) Dimension - Seat depth>15 x Height 28 to 32 Height for a 42" counter Armrest - YES Seat cushions - NO Material - Polymer	2	Yes		\$	\$

		Support – Sled Base Bar Height Rest foot Pied – YES Delivery: CSC Complexe Guy Favreau Montréal East Tower, 6th Floor				
18	6KKCSAxxSY16XXXMINX (CAT 6)	Kitchenette chair / (Sled Base) Dimension - Seat depth >16 x Height 17 to 20 Armrest - YES Seat cushions - NO Material - Polymer Support – Sled Base Height Standard Color: White Delivery: CSC Complexe Guy Favreau Montréal East Tower, 6th Floor	2	Yes		\$

****Provide additional information:**

Canada is requesting bidders: to provide drawings and/or pictures including descriptive literature for these products with your bid submission.

NSA products

The Supplier signs, and certifies that all the NSA products offered will conform to all specifications and meet the testing requirements detailed at Annex D.

Section A - IU REQUIREMENT			Section B – SUPPLIER'S BID			
#	NON-SA Product(s)	QTY	** Provide additional Information Yes/No	Supplier Part Number	Firm Unit Price \$	Extended Total [Qty x Price] \$
19	3 white laminate top panels to cover the top of 3 filing cabinets measuring 30"x 18" (3FLT3DXXPM36D18XXXS) (CAT3) Delivery: CSC Thetford Mines	3	Yes		\$	\$
20	Modesty panel for Meeting and Training Table (CAT 6) 6MTRXTRELL24L48WYYY Dimensions of table: L48xW24xH29 (with locking casters) Height of the Modesty panel = Between 13 to 15" Length of modesty panels = for L48" tables 6MTRXTRECL24L48WYYY Delivery: CSC Laval, CSC Pointe-Claire, CSC Sainte-Anne des Monts, CSC Longueuil	27	Yes		\$	\$
21	Item removed Gredenza 48x24x34 (CAT 6) Furniture similar to CIUGdC : 6ZFHLXX24L48HSDSDKX Dimensions: Length 48 x Depth 24 x Height 34 Support – On casters Casters – Yes, locked Material – Laminate Color – Wood pattern/ Provide 2 colors of wood pattern laminate Left side = 1 drawer and a door Right side = 1 drawer and a door With keys – Yes Have a folding shelf on the right side (see photo as example) Ex. photo:	1	Yes		\$	\$

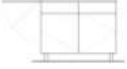


	<p>Sur roulettes avec tablettes rabatable et tiroirs 24"x48"x 34" de hauteur</p>  <p>avec roulette</p> <p>Delivery: CSC Complexe Guy Favreau Montréal East Tower, 6th Floor</p>				
22	<p>Table 18x60x29 (CAT 6) Furniture similar to CIUGdC: 6MMTMDRENL30L60WYNX (Different depth and certain features as well) Narrow table with back panels Length 60 x Depth 18 x Height (standard) 29 Support - Panels Rectangular shape Power/Data - NO Back panel - Yes Material - laminate Color - White <i>Ex. Photo</i></p>  <p>Delivery: CSC Complexe Guy Favreau Montreal East Tower, 6th Floor</p>	1	Yes	\$	\$
23	<p>Table 18x60x42 (CAT 6) Furniture similar to CIUGdC : 6MMTMDRENL30L60WYNX (Different Depth and Height, also certain features as well) Narrow table with end and front panels Length 60 x Depth 18 x Height 42" Support – Panels Shape - Rectangular Power/Data - NO Back Panels - YES Material - Laminate Color - White Support legs – YES <i>Ex. Photo</i></p>  <p>Delivery: CSC Complexe Guy Favreau Montreal East Tower, 6th Floor</p>	1	Yes	\$	\$

Table 2 – Delivery – Category 3, Category 6

Section A - IU REQUIREMENT				Section B – SUPPLIER'S BID	
Product Item # from Table 1	Location	Desired Date** (YYYY-MM-DD)	Desired Time: Normal Business Hours Or Outside Normal Business Hours *	Supplier will supply and deliver as per below**	Firm Lot Price \$
5, 8, 11, 12, 13, 14 & 20	CSC Laval 1041 boul. des Laurentides Laval QC H7G 1G8 Contact:	2023-12-15	Normal/Outside Normal	_____ : weeks <i>Standard Lead time is between 6-10 weeks for furniture delivery and installation.</i>	\$
1, 1a, 3, 6,7,9 & 10		2024-04-05	Normal/Outside Normal	_____ : weeks <i>Standard Lead time is between 6-10 weeks for furniture delivery and installation.</i>	\$
2, 5, 15, 16 & 20	CSC Longueuil 1195, chemin Du Tremblay, bureau 100, Longueuil QC J4N 1R4 Contact:	2023-06-15	Normal	_____ : weeks <i>Standard Lead time is between 6-10 weeks for furniture delivery and installation.</i>	\$
3	CSC Thetford Mines 350, boulevard Frontenac, Ouest, bureau 500	2023-08-31 (or as soon as possible)	Normal	_____ : weeks <i>Standard Lead time is between 6-10 weeks for furniture delivery and installation.</i>	\$
4 & 19	Thetford Mines QC G6G 6N7 Contact :	2023-08-31			
5, 11, 14, 15, 16 & 20	CSC Pointe-Claire 2400 promenade des sources, Pointe-Claire, QC, H9R 5W3 Contact:	2023-06-26	Normal	_____ : weeks <i>Standard Lead time is between 6-10 weeks for furniture delivery and installation.</i>	\$
5, 8 & 20	CSC Saint-Anne-des-Monts 169, Route du parc , Saint-Anne-des-Monts, Québec , G4V 3S5 Contact:	2023-06-05	Normal	_____ : weeks <i>Standard Lead time is between 6-10 weeks for furniture delivery and installation.</i>	\$

8,16,17,18, 21 , 22 & 23	CSC Complexe Guy Favreau Montreal, East Tower, 6th Floor et. 200 Boul René-Lévesque Ouest, Montréal, Québec, H2Z 1X4 Contact:	2023-04-14	Normal	_____ : weeks <i>Standard Lead time is between 6-10 weeks for furniture delivery and installation.</i>	\$
*Normal Business Hours 8:00 – 17:00, as per SA, Annex A, article 5 **The Project Authority (PA) will provide the supplier the authority to proceed prior to the finalized delivery date taking into consideration the delivery time provided by the supplier. Canada will not be responsible if the supplier chooses to proceed without the PA authorization.				Delivery Total:	\$

Table 3 – Installation – Category 3, Category 6

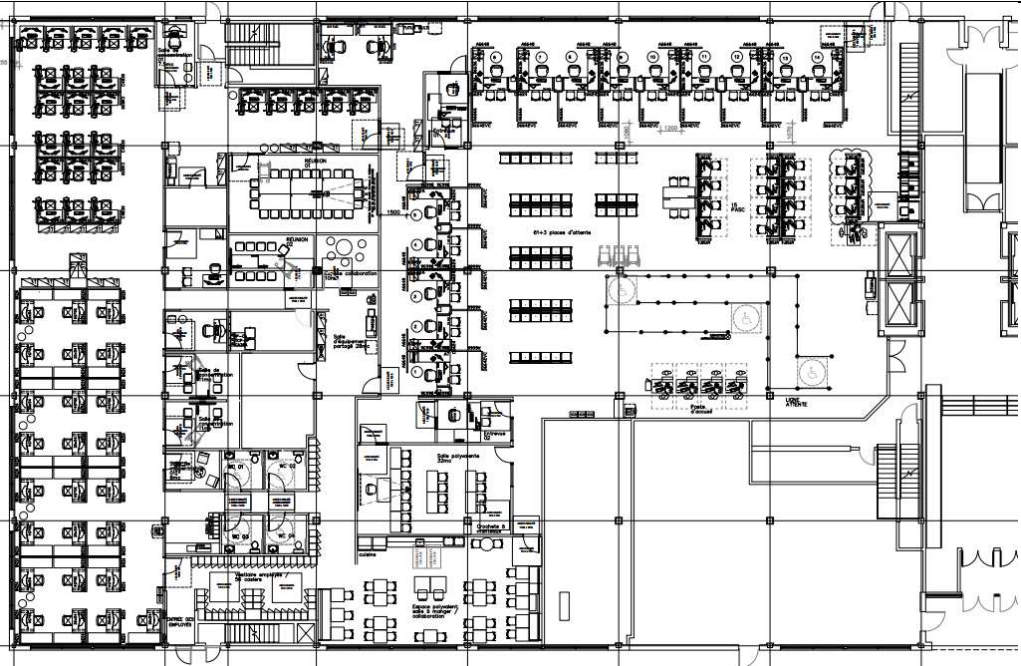
Section A - IU REQUIREMENT				Section B – SUPPLIER'S BID	
Product Item # from Table 1	Location	Desired Date** (YYYY-MM-DD)	Desired Time: Normal Business Hours Or Outside Normal Business Hours *	Supplier will install as per below**	Firm Lot Price \$
5, 8, 11, 12, 13, 14 & 20	CSC Laval 1041 boul. des Laurentides Laval QC H7G 1G8 Contact:	2023-12-15	Normal/Outside Normal	_____ : weeks from date of supply and delivery <i>Standard Lead time is between 6-10 weeks for furniture delivery and installation.</i>	\$
1, 1a, 3 , 6,7,9 & 10		2024-04-05	Normal/Outside Normal	_____ : weeks from date of supply and delivery <i>Standard Lead time is between 6-10 weeks for furniture delivery and installation.</i>	\$
2, 5, 15, 16 & 20	CSC Longueuil 1195, chemin Du Tremblay, bureau 100, Longueuil QC J4N 1R4 Contact:	2023-06-15	Normal	_____ : weeks from date of supply and delivery <i>Standard Lead time is between 6-10 weeks for furniture delivery and installation.</i>	\$
3	CSC Thetford Mines 350, boulevard Frontenac, Ouest, bureau 500 Thetford Mines QC G6G 6N7	As soon as possible	Normal	_____ : weeks from date of supply and delivery <i>Standard Lead time is between 6-10 weeks for furniture delivery and installation.</i>	\$
4 & 19	Contact :	2023-08-31			

5, 11, 14, 15, 16 & 20	CSC POINTE CLAIRE 2400 promenade des sources, Pointe-Claire, QC, H9R 5W3 Contact:	2023-06-26	Normal	_____ : weeks from date of supply and delivery <i>Standard Lead time is between 6-10 weeks for furniture delivery and installation.</i>	\$
5, 8 & 20	CSC Saint-Anne-des-Monts 169, Route du parc , Saint-Anne- des-Monts, Québec , G4V 3S5 Contact:	2023-06-05	Normal	_____ : weeks from date of supply and delivery <i>Standard Lead time is between 6-10 weeks for furniture delivery and installation.</i>	\$
8,16,17,18 & 21, 22, 23	CSC Complexe Guy Favreau Montreal East Tower, 6th Floor 200 Boul René-Lévesque Ouest, Montréal, Québec, H2Z 1X4 Contact:	2023-04-14	Normal	_____ : weeks from date of supply and delivery <i>Standard Lead time is between 6-10 weeks for furniture delivery and installation.</i>	\$
*Normal Business Hours 8:00 – 17:00, as per SA, Annex A, article 5 **The Project Authority (PA) will provide the supplier the authority to proceed prior to the finalized installation date taking into consideration the installation time provided by the supplier. Canada will not be responsible if the supplier chooses to proceed without the PA authorization.				Installation Total:	\$

Table 7 – Standard Finishes and Canada’s Facilities to Accommodate the Delivery and Certifications

7a. Category 3 & 6 - CSC Laval

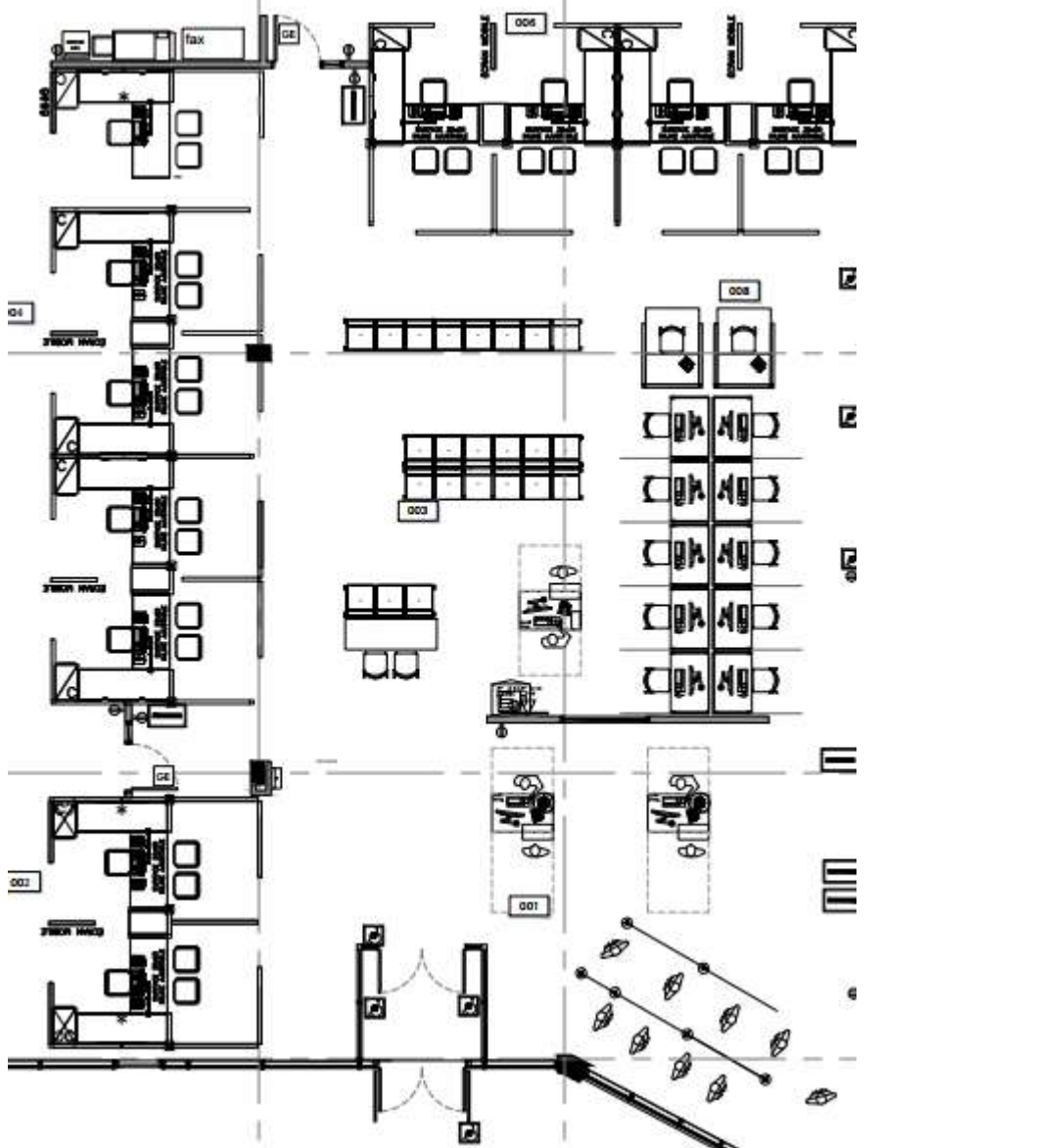
1.	Standard Finishes	
1.1	IU is to consult the Supplier’s Website identified in Part 6A of the SA to view the available finishes. Within ten business days of the contract award, the Project Authority will provide the Contractor with a written notice of Canada’s finish choices for each of the product(s) in Annex A. The Contractor will deliver the products corresponding to Canada’s choice of specific finishes(s). No additional charge will be applied to Canada.	
2.	Canada’s Facilities to Accommodate the Delivery <i>The Supplier’s employees and subcontractors requiring access to the site must adhere to the health and safety plans established for the site, in addition to any laws in effect in the jurisdiction where the work is being performed.</i> <i>During the period of the contract, a representative of Canada or a service provider(s) under contract with the Government of Canada may request the list of employees and subcontractors requiring access to the site to perform the work and their security statuses. Information must be provided in the timeframe prescribed in order to ensure that the supply, delivery and installation of the furniture aligns with the master schedule.</i>	
2.1	Loading Dock/Location	
A	Location	Service Canada, 1041 boul des Laurentides, Laval, QC, H7G 3G8
B	Dock	No
C	Lift	No
D	Door	1 double door at the citizens' entrance (60" x 80") 1 or 2 single doors for employee entry. (36"x80") Still to come, in anticipation of construction.

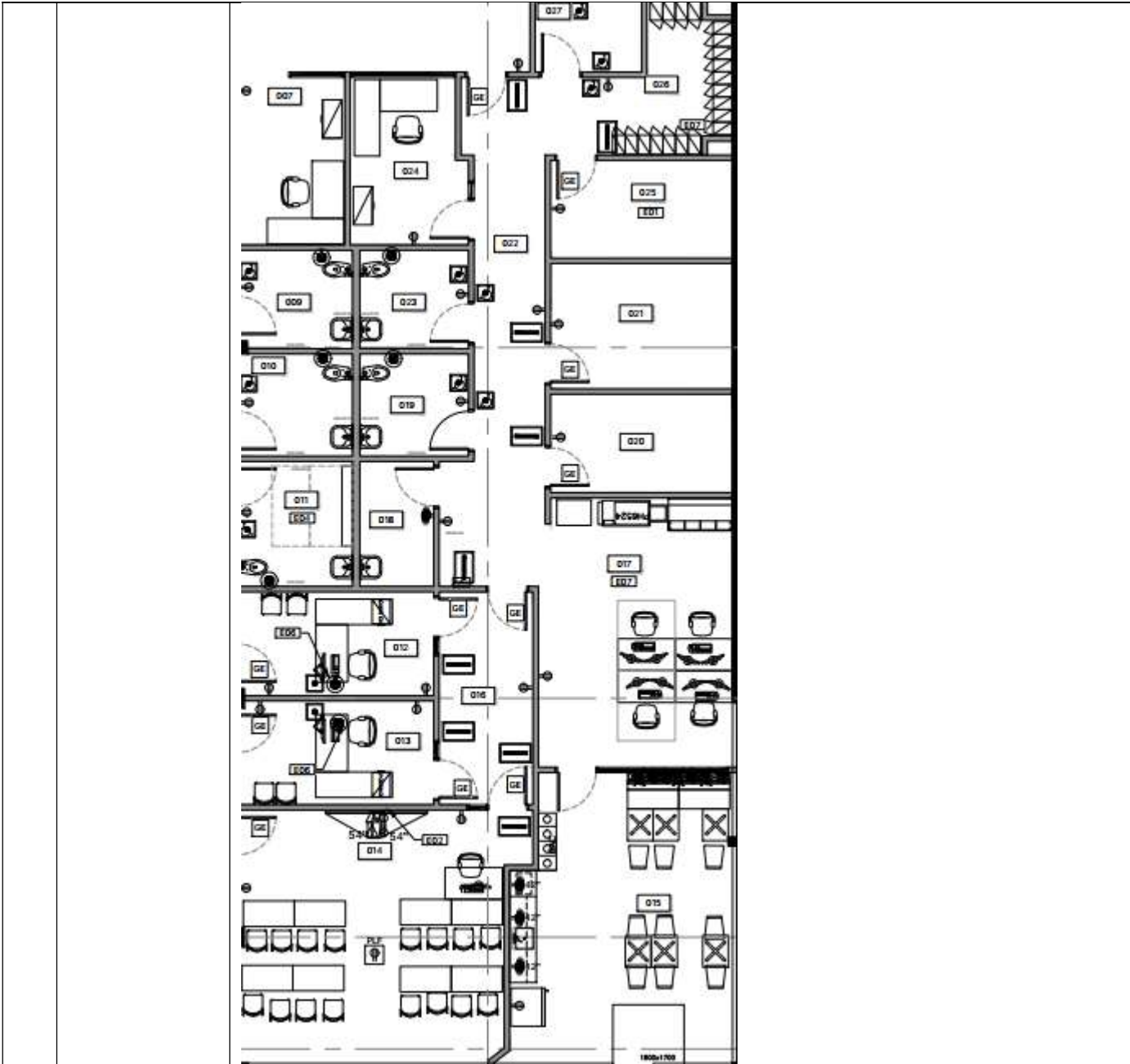
E	Freight Elevator	No
F	Other (specify, if any)	

3.	Continuance of Certifications
	<p>The Bidder certifies that by submitting a bid in response to the RFB, the Bidder, and any of the Bidder’s members if the Bidder is a Joint Venture, continues to comply with all of the following certifications listed in Parts 6A and 6B of the Bidder’s SA for Work Spaces.</p> <p>Canada may request copies of environmental certification(s) prior to contract award within a time period specified by the Identified User.</p>
3.1	Integrity Provisions
3.2	Federal Contractor’s Program for Employment Equity
3.4	Product Conformance
3.5	Price Certification (In accordance with the SA, Part 6B)

7b. Category 3 & 6 - CSC Longueuil

1.	Standard Finishes	
1.1	<p>IU is to consult the Supplier’s Website identified in Part 6A of the SA to view the available finishes.</p> <p>Within ten business days of the contract award, the Project Authority will provide the Contractor with a written notice of Canada’s finish choices for each of the product(s) in Annex A.</p> <p>The Contractor will deliver the products corresponding to Canada’s choice of specific finishes(s). No additional charge will be applied to Canada.</p>	
2.	Canada’s Facilities to Accommodate the Delivery	
	<p><i>The Supplier’s employees and subcontractors requiring access to the site must adhere to the health and safety plans established for the site, in addition to any laws in effect in the jurisdiction where the work is being performed.</i></p> <p><i>During the period of the contract, a representative of Canada or a service provider(s) under contract with the Government of Canada may request the list of employees and subcontractors requiring access to the site to perform the work and their security statuses. Information must be provided in the timeframe prescribed in order to ensure that the supply, delivery and installation of the furniture aligns with the master schedule.</i></p>	
2.1	Loading Dock/Location	
A	Location	1195, chemin Du Tremblay, bureau 100, Longueuil QC J4N 1R4
B	Dock	No
C	Lift	No
D	Door	<p>The double doors at the public entrance measures 71"</p> <p>The door that divides the Services / Processing sections measures 38".</p> <p>The corridor just after this door measures 40" and after, 53".</p>

		<p>The distance from the back door (employees) to the front office is 155 feet.</p>
<p>E</p>	<p>Freight Elevator</p>	<p>No</p>
<p>F</p>	<p>Other (specify, if any)</p>	 <p>The floor plan diagram illustrates the layout of an office building. It features several rows of desks and workstations, some labeled with 'TAX' and '006'. There are multiple restrooms, including a 'WOMEN' restroom and a 'MEN' restroom. A freight elevator is located in the lower right quadrant of the plan. The diagram also shows various corridors, doorways, and furniture like chairs and tables. A scale bar is visible in the bottom right corner of the plan.</p>



3.	<p>Continuance of Certifications</p> <p>The Bidder certifies that by submitting a bid in response to the RFB, the Bidder, and any of the Bidder’s members if the Bidder is a Joint Venture, continues to comply with all of the following certifications listed in Parts 6A and 6B of the Bidder’s SA for Work Spaces.</p> <p>Canada may request copies of environmental certification(s) prior to contract award within a time period specified by the Identified User.</p>
3.1	Integrity Provisions
3.2	Federal Contractor’s Program for Employment Equity
3.4	Product Conformance
3.5	Price Certification (In accordance with the SA, Part 6B)

7c. Category 3 – CSC Thetford Mines

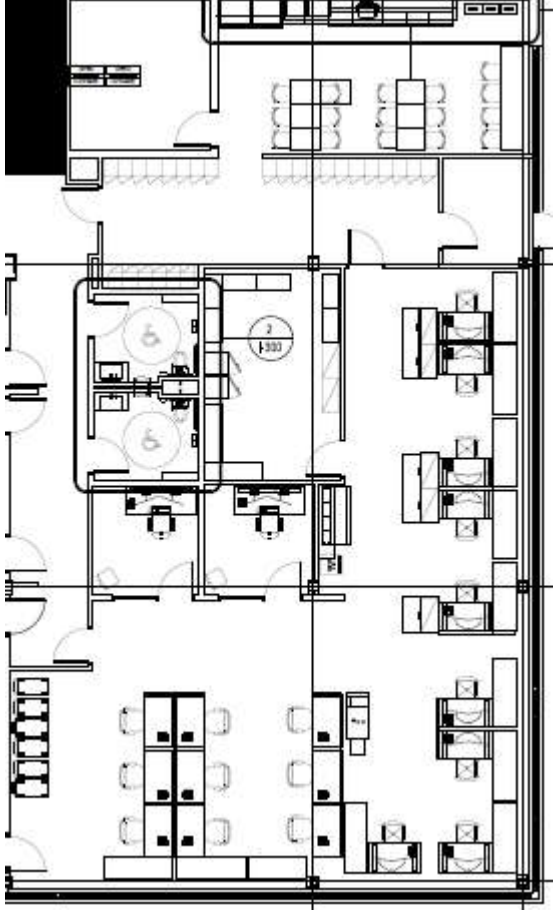
1.	Standard Finishes	
1. 1	<p>IU is to consult the Supplier's Website identified in Part 6A of the SA to view the available finishes.</p> <p>Within ten business days of the contract award, the Project Authority will provide the Contractor with a written notice of Canada's finish choices for each of the product(s) in Annex A.</p> <p>The Contractor will deliver the products corresponding to Canada's choice of specific finishes(s). No additional charge will be applied to Canada.</p>	
2.	Canada's Facilities to Accommodate the Delivery	
	<p><i>The Supplier's employees and subcontractors requiring access to the site must adhere to the health and safety plans established for the site, in addition to any laws in effect in the jurisdiction where the work is being performed.</i></p> <p><i>During the period of the contract, a representative of Canada or a service provider(s) under contract with the Government of Canada may request the list of employees and subcontractors requiring access to the site to perform the work and their security statuses. Information must be provided in the timeframe prescribed in order to ensure that the supply, delivery and installation of the furniture aligns with the master schedule.</i></p>	
2. 1	Loading Dock/Location	
A	Location	350, boul. Frontenac ouest , bureau 500 Thetford-Mines G6G 6N7
B	Dock	No
C	Lift	No
D	Door	<p>The double doors at the citizens' entrance measures 71".</p> <p>The door that divides the Citizen Services / Processing sections is 38".</p> <p>The corridor just after this door measures 40" and after that 53".</p> <p>The distance from the back door (employees) to the front interview office is 155 feet.</p>
E	Freight Elevator	No

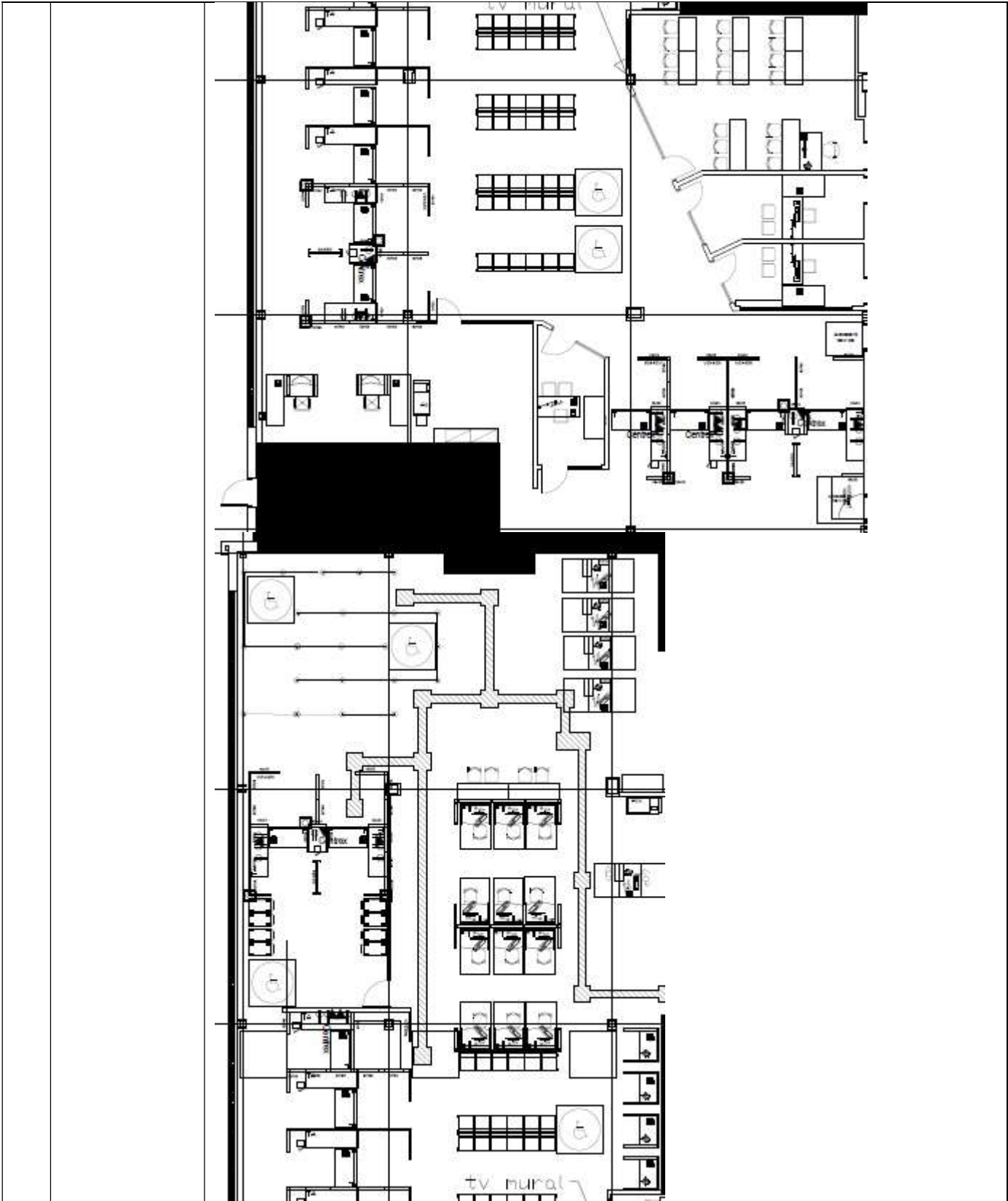
F Other (specify, if any)



3.	Continuance of Certifications
	<p>The Bidder certifies that by submitting a bid in response to the RFB, the Bidder, and any of the Bidder’s members if the Bidder is a Joint Venture, continues to comply with all of the following certifications listed in Parts 6A and 6B of the Bidder’s SA for Work Spaces.</p> <p>Canada may request copies of environmental certification(s) prior to contract award within a time period specified by the Identified User.</p>
3. 1	Integrity Provisions
3. 2	Federal Contractor’s Program for Employment Equity
3. 4	Product Conformance
3. 5	Price Certification (In accordance with the SA, Part 6B)

7d. Category 6 – CSC Pointe-Claire

1.	Standard Finishes	
1.1	<p>IU is to consult the Supplier’s Website identified in Part 6A of the SA to view the available finishes.</p> <p>Within ten business days of the contract award, the Project Authority will provide the Contractor with a written notice of Canada’s finish choices for each of the product(s) in Annex A.</p> <p>The Contractor will deliver the products corresponding to Canada’s choice of specific finishes(s). No additional charge will be applied to Canada.</p>	
2.	<p>Canada’s Facilities to Accommodate the Delivery</p> <p><i>The Supplier’s employees and subcontractors requiring access to the site must adhere to the health and safety plans established for the site, in addition to any laws in effect in the jurisdiction where the work is being performed.</i></p> <p><i>During the period of the contract, a representative of Canada or a service provider(s) under contract with the Government of Canada may request the list of employees and subcontractors requiring access to the site to perform the work and their security statuses. Information must be provided in the timeframe prescribed in order to ensure that the supply, delivery and installation of the furniture aligns with the master schedule.</i></p>	
2.1	Loading Dock/Location	
A	Location	2400 promenade des sources, Pointe-Claire, QC, H9R 5W3
B	Dock	No
C	Lift	No
D	Door	72” x 108” Double door (Front entrance) Single door (back-end) for movers
E	Freight Elevator	No
F	Other (specify, if any)	



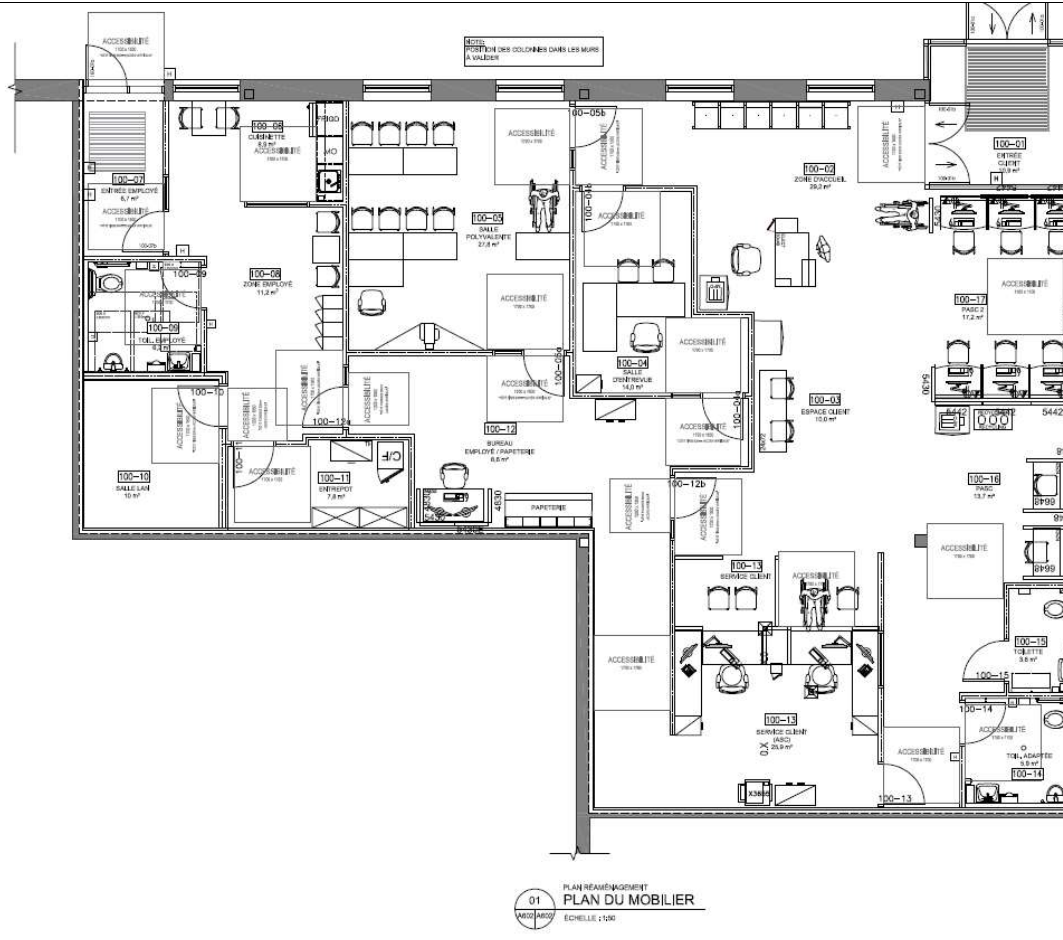
3. Continuance of Certifications

	<p>The Bidder certifies that by submitting a bid in response to the RFB, the Bidder, and any of the Bidder's members if the Bidder is a Joint Venture, continues to comply with all of the following certifications listed in Parts 6A and 6B of the Bidder's SA for Work Spaces.</p> <p>Canada may request copies of environmental certification(s) prior to contract award within a time period specified by the Identified User.</p>
3.1	Integrity Provisions
3.2	Federal Contractor's Program for Employment Equity
3.4	Product Conformance
3.5	Price Certification (In accordance with the SA, Part 6B)

7e. Category 6 – CSC Saint-Anne-des-Monts

1.	Standard Finishes	
1.1	<p>IU is to consult the Supplier's Website identified in Part 6A of the SA to view the available finishes.</p> <p>Within ten business days of the contract award, the Project Authority will provide the Contractor with a written notice of Canada's finish choices for each of the product(s) in Annex A.</p> <p>The Contractor will deliver the products corresponding to Canada's choice of specific finishes(s). No additional charge will be applied to Canada.</p>	
2.	Canada's Facilities to Accommodate the Delivery	
	<p><i>The Supplier's employees and subcontractors requiring access to the site must adhere to the health and safety plans established for the site, in addition to any laws in effect in the jurisdiction where the work is being performed.</i></p> <p><i>During the period of the contract, a representative of Canada or a service provider(s) under contract with the Government of Canada may request the list of employees and subcontractors requiring access to the site to perform the work and their security statuses. Information must be provided in the timeframe prescribed in order to ensure that the supply, delivery and installation of the furniture aligns with the master schedule.</i></p>	
2.1	Loading Dock/Location	
A	Location	169, Route du parc , Saint-Anne-des-Monts, Québec , G4V 3S5
B	Dock	No
C	Lift	No
D	Door	<p>Door width:</p> <p>Double doors (60" x 80")</p> <p>Single doors (36" x 80")</p>
E	Freight Elevator	No

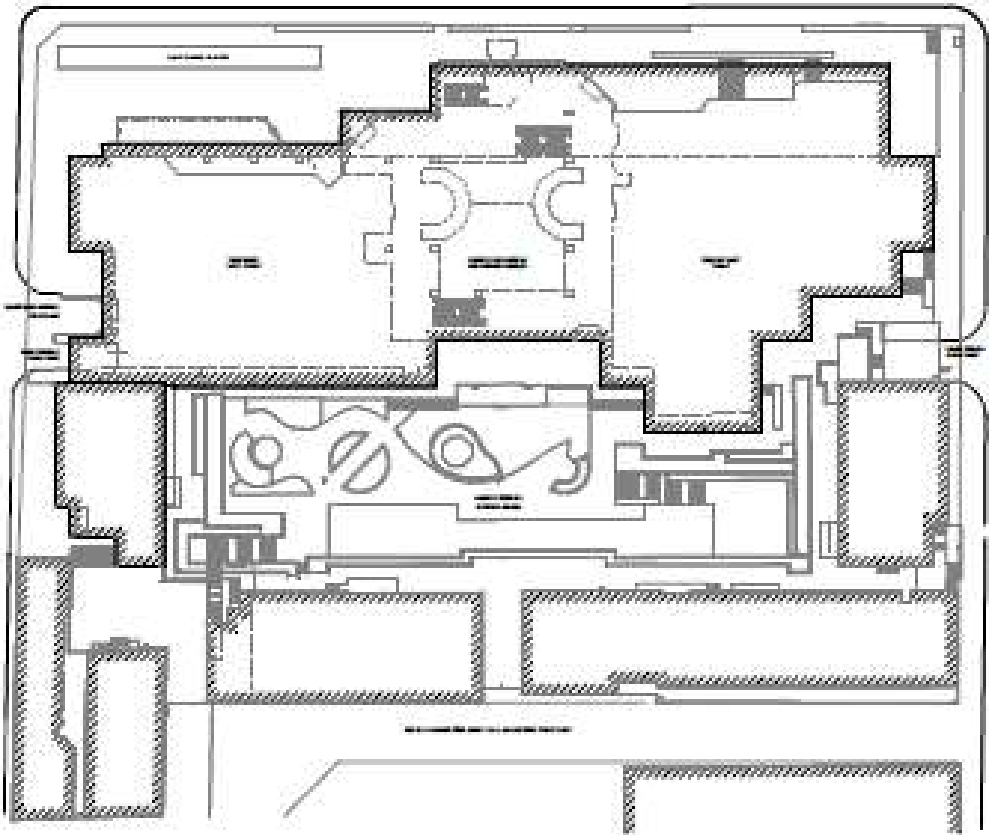
F Other (specify, if any)

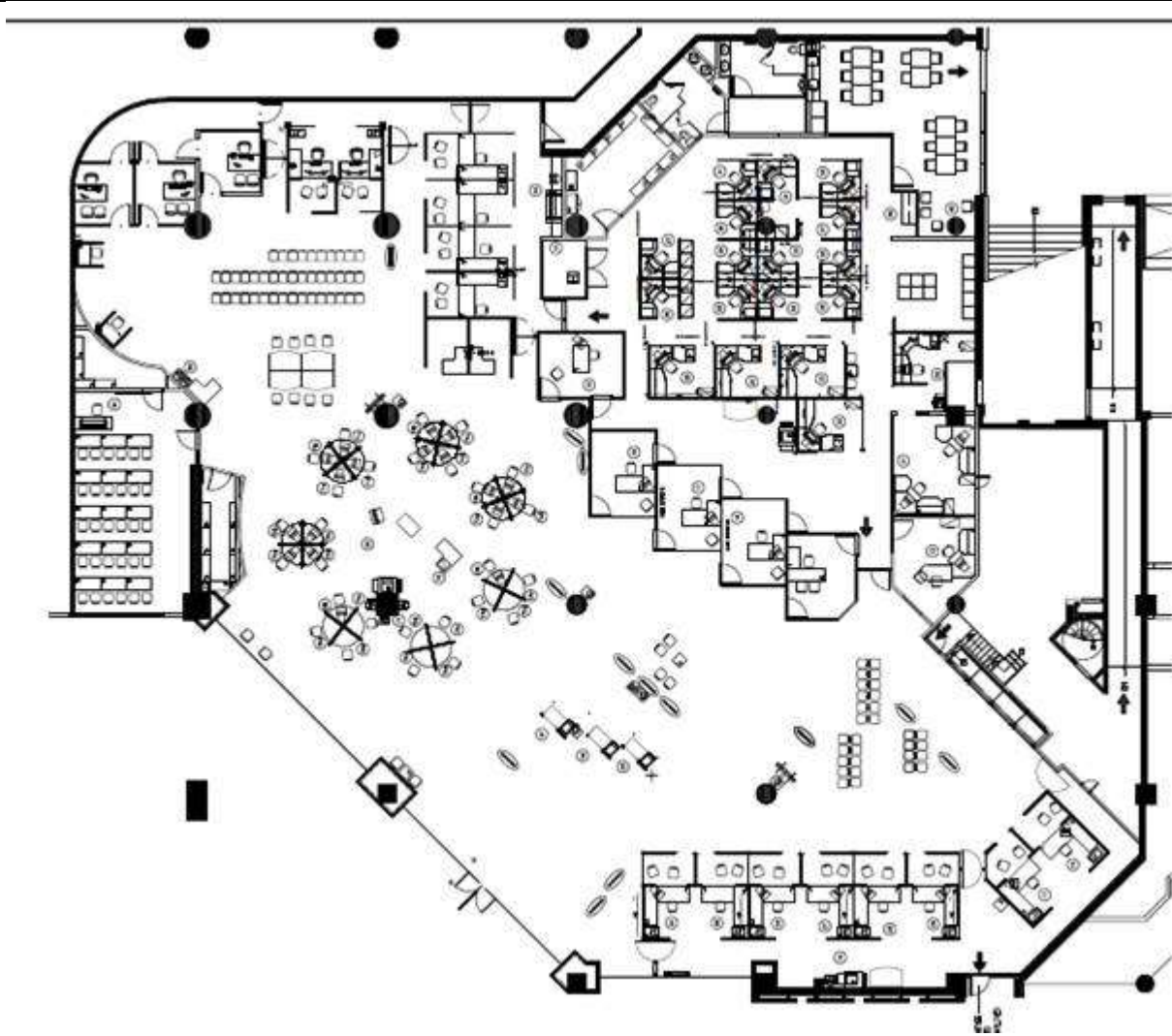


3.	Continuance of Certifications
	<p>The Bidder certifies that by submitting a bid in response to the RFB, the Bidder, and any of the Bidder’s members if the Bidder is a Joint Venture, continues to comply with all of the following certifications listed in Parts 6A and 6B of the Bidder’s SA for Work Spaces.</p> <p>Canada may request copies of environmental certification(s) prior to contract award within a time period specified by the Identified User.</p>
3.1	Integrity Provisions
3.2	Federal Contractor’s Program for Employment Equity
3.4	Product Conformance
3.5	Price Certification (In accordance with the SA, Part 6B)

7f. Category 6 – CSC Complex Guy Favreau Montreal East Tower, 6th Floor

1.	Standard Finishes
1.1	<p>IU is to consult the Supplier’s Website identified in Part 6A of the SA to view the available finishes.</p> <p>Within ten business days of the contract award, the Project Authority will provide the Contractor with a written notice of Canada’s finish choices for each of the product(s) in Annex A.</p> <p>The Contractor will deliver the products corresponding to Canada’s choice of specific finishes(s). No additional charge will be applied to Canada.</p>
2.	Canada’s Facilities to Accommodate the Delivery

	<p><i>The Supplier's employees and subcontractors requiring access to the site must adhere to the health and safety plans established for the site, in addition to any laws in effect in the jurisdiction where the work is being performed.</i></p> <p><i>During the period of the contract, a representative of Canada or a service provider(s) under contract with the Government of Canada may request the list of employees and subcontractors requiring access to the site to perform the work and their security statuses. Information must be provided in the timeframe prescribed in order to ensure that the supply, delivery and installation of the furniture aligns with the master schedule.</i></p>	
2.1	Loading Dock/Location	
A	Location	200 Boul René-Lévesque Ouest, Montréal, Québec, H2Z 1X4
B	Dock	Oui, camion maximum de 12'-6" de haut maximum allège et 45'-0" de longueur par la rue Jeanne-Mance, 1125
C	Lift	Yes
D	Door	<p>Basement doors and corridor (from dock to service lift: minimum 5' wide x 8' high. Distance from dock to service lift ±265'.</p> <p>There is 1 service lift. Door 3'6" x 7', inside size 8' wide x 7' deep.</p> <p>The service lift arrives at our premises on the work floors</p> <p>Distance between service lift door on floors and wall in front ±66".</p>
E	Freight Elevator	No
F	Other (specify, if any)	



3.	Continuance of Certifications
	<p>The Bidder certifies that by submitting a bid in response to the RFB, the Bidder, and any of the Bidder's members if the Bidder is a Joint Venture, continues to comply with all of the following certifications listed in Parts 6A and 6B of the Bidder's SA for Work Spaces.</p> <p>Canada may request copies of environmental certification(s) prior to contract award within a time period specified by the Identified User.</p>
3. 1	Integrity Provisions
3. 2	Federal Contractor's Program for Employment Equity
3. 4	Product Conformance
3. 5	Price Certification (In accordance with the SA, Part 6B)

Table 8 - Bid Evaluation and Contract Total

(Canada may complete if not completed by the Bidder)

1	Firm Product Total (Table 1)	\$
2	Firm Delivery Total (Table 2)	\$
3	Firm Installation Total (Table 3)	\$
4	Hardware Total as per article 1.5 of Annex A-1 of SA	\$
5	Total Evaluated (Bid) Price* (1 + 2 + 3 + 4)	\$
6	Contract Price (1 + 2 + 3 + 4)	\$
7	Applicable Tax(es)	\$
8	Total Estimated Cost (7 + 8)	\$

* Applicable taxes extra.

Table 9 – Bidder’s Authorized Representative

1.	Bidder’s Authorized Representative for the Bid and the Contract	
	Name:	Telephone:
		E-Mail:
		PBN:

**ANNEX B
SECURITY REQUIREMENTS**

The security requirements set out in the attached Security Requirements Check List (SRCL) and in the terms below apply to and form part of the Contract.

1. The Contractor must, at all times during the performance of the Contract, hold a valid Designated Organization Screening (DOS), issued by the Contract Security Program (CSP), Public Works and Government Services Canada (PWGSC).
2. The Contractor personnel requiring access to sensitive site(s) must EACH hold a valid RELIABILITY STATUS, granted or approved by the CSP, PWGSC.
3. Subcontracts which contain security requirements are NOT to be awarded without the prior written permission of the CSP, PWGSC.
4. The Contractor must comply with the provisions of the:
 - a) Security Requirements Check List and security guide (if applicable), attached at Annex B;
 - b) *Contract Security Manual* (Latest Edition).



Contract Number / Numéro du contrat PREQ 100022559
Security Classification / Classification de sécurité non-classifié

**SECURITY REQUIREMENTS CHECK LIST (SRCL)
LISTE DE VÉRIFICATION DES EXIGENCES RELATIVES À LA SÉCURITÉ (LVERS)**

PART A - CONTRACT INFORMATION / PARTIE A - INFORMATION CONTRACTUELLE		
1. Originating Government Department or Organization / Ministère ou organisme gouvernemental d'origine		2. Branch or Directorate / Direction générale ou Direction
3. a) Subcontract Number / Numéro du contrat de sous-traitance	3. b) Name and Address of Subcontractor / Nom et adresse du sous-traitant	
4. Brief Description of Work / Brève description du travail Achat, livraison et installation pour la CAT-3 de l'AMA : Classeurs et armoires de rangement métalliques, pour les projet PAL / SAL de Leval, Longueuil et Theford Mines		
5. a) Will the supplier require access to Controlled Goods? Le fournisseur aura-t-il accès à des marchandises contrôlées?		<input checked="" type="checkbox"/> No Non <input type="checkbox"/> Yes Oui
5. b) Will the supplier require access to unclassified military technical data subject to the provisions of the Technical Data Control Regulations? Le fournisseur aura-t-il accès à des données techniques militaires non classifiées qui sont assujetties aux dispositions du Règlement sur le contrôle des données techniques?		<input checked="" type="checkbox"/> No Non <input type="checkbox"/> Yes Oui
6. Indicate the type of access required / Indiquer le type d'accès requis		
6. a) Will the supplier and its employees require access to PROTECTED and/or CLASSIFIED information or assets? Le fournisseur ainsi que les employés auront-ils accès à des renseignements ou à des biens PROTÉGÉS et/ou CLASSIFIÉS? (Specify the level of access using the chart in Question 7. c.) (Préciser le niveau d'accès en utilisant le tableau qui se trouve à la question 7. c.)		<input checked="" type="checkbox"/> No Non <input type="checkbox"/> Yes Oui
6. b) Will the supplier and its employees (e.g. cleaners, maintenance personnel) require access to restricted access areas? No access to PROTECTED and/or CLASSIFIED information or assets is permitted. Le fournisseur et ses employés (p. ex. nettoyeurs, personnel d'entretien) auront-ils accès à des zones d'accès restreintes? L'accès à des renseignements ou à des biens PROTÉGÉS et/ou CLASSIFIÉS n'est pas autorisé.		<input type="checkbox"/> No Non <input checked="" type="checkbox"/> Yes Oui
6. c) Is this a commercial courier or delivery requirement with no overnight storage? S'agit-il d'un contrat de messagerie ou de livraison commerciale sans entreposage de nuit?		<input checked="" type="checkbox"/> No Non <input type="checkbox"/> Yes Oui
7. a) Indicate the type of information that the supplier will be required to access / Indiquer le type d'information auquel le fournisseur devra avoir accès		
Canada <input type="checkbox"/>	NATO / OTAN <input type="checkbox"/>	Foreign / Étranger <input type="checkbox"/>
7. b) Release restrictions / Restrictions relatives à la diffusion		
No release restrictions Aucune restriction relative à la diffusion <input type="checkbox"/>	All NATO countries Tous les pays de l'OTAN <input type="checkbox"/>	No release restrictions Aucune restriction relative à la diffusion <input type="checkbox"/>
Not releasable À ne pas diffuser <input type="checkbox"/>		
Restricted to: / Limité à: <input type="checkbox"/>	Restricted to: / Limité à: <input type="checkbox"/>	Restricted to: / Limité à: <input type="checkbox"/>
Specify country(ies): / Préciser le(s) pays:	Specify country(ies): / Préciser le(s) pays:	Specify country(ies): / Préciser le(s) pays:
7. c) Level of information / Niveau d'information		
PROTECTED A PROTÉGÉ A <input type="checkbox"/>	NATO UNCLASSIFIED NATO NON CLASSIFIÉ <input type="checkbox"/>	PROTECTED A PROTÉGÉ A <input type="checkbox"/>
PROTECTED B PROTÉGÉ B <input type="checkbox"/>	NATO RESTRICTED NATO DIFFUSION RESTREINTE <input type="checkbox"/>	PROTECTED B PROTÉGÉ B <input type="checkbox"/>
PROTECTED C PROTÉGÉ C <input type="checkbox"/>	NATO CONFIDENTIAL NATO CONFIDENTIEL <input type="checkbox"/>	PROTECTED C PROTÉGÉ C <input type="checkbox"/>
CONFIDENTIAL CONFIDENTIEL <input type="checkbox"/>	NATO SECRET NATO SECRET <input type="checkbox"/>	CONFIDENTIAL CONFIDENTIEL <input type="checkbox"/>
SECRET SECRET <input type="checkbox"/>	COSMIC TOP SECRET COSMIC TRÈS SECRET <input type="checkbox"/>	SECRET SECRET <input type="checkbox"/>
TOP SECRET TRÈS SECRET <input type="checkbox"/>		TOP SECRET TRÈS SECRET <input type="checkbox"/>
TOP SECRET (SIGINT) TRÈS SECRET (SIGINT) <input type="checkbox"/>		TOP SECRET (SIGINT) TRÈS SECRET (SIGINT) <input type="checkbox"/>

PART A (continued) / PARTIE A (suite)

8. Will the supplier require access to PROTECTED and/or CLASSIFIED COMSEC information or assets?
 Le fournisseur aura-t-il accès à des renseignements ou à des biens COMSEC désignés PROTÉGÉS et/ou CLASSIFIÉS? No / Non Yes / Oui

If Yes, indicate the level of sensitivity:
 Dans l'affirmative, indiquer le niveau de sensibilité :

9. Will the supplier require access to extremely sensitive INFOSEC information or assets?
 Le fournisseur aura-t-il accès à des renseignements ou à des biens INFOSEC de nature extrêmement délicate? No / Non Yes / Oui

Short Title(s) of material / Titre(s) abrégé(s) du matériel :
 Document Number / Numéro du document :

PART B - PERSONNEL (SUPPLIER) / PARTIE B - PERSONNEL (FOURNISSEUR)

10. a) Personnel security screening level required / Niveau de contrôle de la sécurité du personnel requis

- | | | | |
|---|---|---|--|
| <input checked="" type="checkbox"/> RELIABILITY STATUS
COTE DE FIABILITÉ | <input type="checkbox"/> CONFIDENTIAL
CONFIDENTIEL | <input type="checkbox"/> SECRET
SECRET | <input type="checkbox"/> TOP SECRET
TRÈS SECRET |
| <input type="checkbox"/> TOP SECRET - SIGINT
TRÈS SECRET - SIGINT | <input type="checkbox"/> NATO CONFIDENTIAL
NATO CONFIDENTIEL | <input type="checkbox"/> NATO SECRET
NATO SECRET | <input type="checkbox"/> COSMIC TOP SECRET
COSMIC TRÈS SECRET |
| <input type="checkbox"/> SITE ACCESS
ACCÈS AUX EMBLEMES | | | |

Special comments:
 Commentaires spéciaux : _____

NOTE: If multiple levels of screening are identified, a Security Classification Guide must be provided.
 REMARQUE : Si plusieurs niveaux de contrôle de sécurité sont requis, un guide de classification de la sécurité doit être fourni.

10. b) May unscreened personnel be used for portions of the work?
 Du personnel sans autorisation sécuritaire peut-il se voir confier des parties du travail? No / Non Yes / Oui

If Yes, will unscreened personnel be escorted?
 Dans l'affirmative, le personnel en question sera-t-il escorté? No / Non Yes / Oui

PART C - SAFEGUARDS (SUPPLIER) / PARTIE C - MESURES DE PROTECTION (FOURNISSEUR)**INFORMATION / ASSETS / RENSEIGNEMENTS / BIENS**

11. a) Will the supplier be required to receive and store PROTECTED and/or CLASSIFIED information or assets on its site or premises?
 Le fournisseur sera-t-il tenu de recevoir et d'entreposer sur place des renseignements ou des biens PROTÉGÉS et/ou CLASSIFIÉS? No / Non Yes / Oui

11. b) Will the supplier be required to safeguard COMSEC information or assets?
 Le fournisseur sera-t-il tenu de protéger des renseignements ou des biens COMSEC? No / Non Yes / Oui

PRODUCTION

11. c) Will the production (manufacture, and/or repair and/or modification) of PROTECTED and/or CLASSIFIED material or equipment occur at the supplier's site or premises?
 Les installations du fournisseur serviront-elles à la production (fabrication et/ou réparation et/ou modification) de matériel PROTÉGÉ et/ou CLASSIFIÉ? No / Non Yes / Oui

INFORMATION TECHNOLOGY (IT) MEDIA / SUPPORT RELATIF A LA TECHNOLOGIE DE L'INFORMATION (TI)

11. d) Will the supplier be required to use its IT systems to electronically process, produce or store PROTECTED and/or CLASSIFIED information or data?
 Le fournisseur sera-t-il tenu d'utiliser ses propres systèmes informatiques pour traiter, produire ou stocker électroniquement des renseignements ou des données PROTÉGÉS et/ou CLASSIFIÉS? No / Non Yes / Oui

11. e) Will there be an electronic link between the supplier's IT systems and the government department or agency?
 Disposera-t-on d'un lien électronique entre le système informatique du fournisseur et celui du ministère ou de l'agence gouvernementale? No / Non Yes / Oui

Contract Number / Numéro du contrat PREQ 100022559
Security Classification / Classification de sécurité non-classifié

PART C - (continued) / PARTIE C - (suite)

For users completing the form **manually** use the summary chart below to indicate the category(ies) and level(s) of safeguarding required at the supplier's site(s) or premises.
Les utilisateurs qui remplissent le formulaire **manuellement** doivent utiliser le tableau récapitulatif ci-dessous pour indiquer, pour chaque catégorie, les niveaux de sauvegarde requis aux installations du fournisseur.

For users completing the form **online** (via the Internet), the summary chart is automatically populated by your responses to previous questions.
Dans le cas des utilisateurs qui remplissent le formulaire **en ligne** (par Internet), les réponses aux questions précédentes sont automatiquement saisies dans le tableau récapitulatif.

SUMMARY CHART / TABLEAU RÉCAPITULATIF

Category / Catégorie	PROTECTED / PROTÉGÉ			CLASSIFIED / CLASSIFIÉ		NATO				COMSEC						
	A	B	C	CONFIDENTIAL / CONFIDENTIEL	SECRET	TOP SECRET / TRÈS SECRET	NATO RESTRICTED / NATO DIFFUSION RESTREINTE	NATO CONFIDENTIAL / NATO CONFIDENTIEL	NATO SECRET	COMSEC TOP SECRET / COMSEC TRÈS SECRET	PROTECTED / PROTÉGÉ			CONFIDENTIAL	SECRET	TOP SECRET / TRÈS SECRET
											A	B	C			
Information / Assets / renseignements / Biens																
Production																
IT Media / Support TI																
IT Link / Lien électronique																

12. a) Is the description of the work contained within this SRCL PROTECTED and/or CLASSIFIED?
La description du travail visé par la présente LVERS est-elle de nature PROTÉGÉE et/ou CLASSIFIÉE? No / Non Yes / Oui

If Yes, classify this form by annotating the top and bottom in the area entitled "Security Classification".
Dans l'affirmative, classifiez le présent formulaire en indiquant le niveau de sécurité dans la case intitulée « Classification de sécurité » au haut et au bas du formulaire.

12. b) Will the documentation attached to this SRCL be PROTECTED and/or CLASSIFIED?
La documentation associée à la présente LVERS sera-t-elle PROTÉGÉE et/ou CLASSIFIÉE? No / Non Yes / Oui

If Yes, classify this form by annotating the top and bottom in the area entitled "Security Classification" and indicate with attachments (e.g. SECRET with Attachments).
Dans l'affirmative, classifiez le présent formulaire en indiquant le niveau de sécurité dans la case intitulée « Classification de sécurité » au haut et au bas du formulaire et indiquez qu'il y a des pièces jointes (p. ex. SECRET avec des pièces jointes).



Contract Number / Numéro du contrat REQ 100022559
Security Classification / Classification de sécurité non-classifié

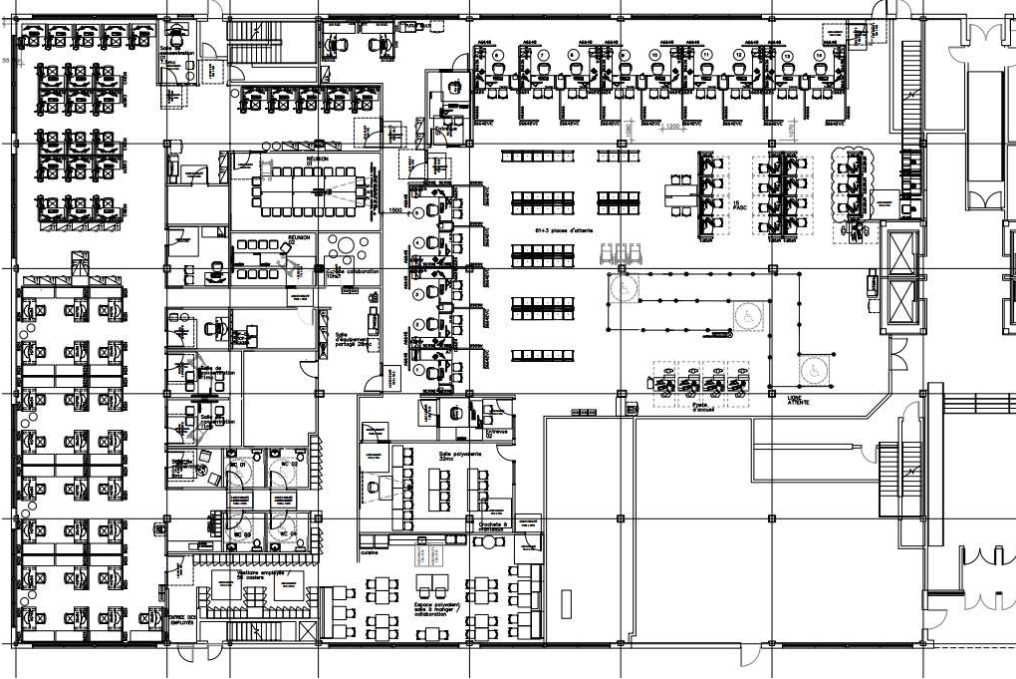
PART D - AUTHORIZATION / PARTIE D - AUTORISATION

13. Organization Project Authority / Chargé de projet de l'organisme			
Name (print) - Nom (en lettres moulées) Jacinte Ménard	Title - Titre Gestionnaire principale	Signature Menard, Jacinte	<small>Digitally signed by Menard, Jacinte DN: cn=JACINTE MENARD, ou=HRSDC, ou=HRSDC, ou=Service Canada, ou=Government of Canada Date: 2022.12.22 10:11:00-0500</small>
Telephone No. - N° de téléphone 438-334-8832	Facsimile No. - N° de télécopieur	E-mail address - Adresse courriel jacinte.j.menard@hrsdcc.gc.ca	Date
14. Organization Security Authority / Responsable de la sécurité de l'organisme			
Name (print) - Nom (en lettres moulées) Martine Lebrun	Title - Titre Gestionnaire de projet	Signature Lebrun, Martine	<small>Signature numérique de Lebrun, Martine Date: 2022.12.14 09:12:29 -0500</small>
Telephone No. - N° de téléphone 514-219-9116	Facsimile No. - N° de télécopieur	E-mail address - Adresse courriel martine.lebrun@servicecanada.gc.ca	Date
15. Are there additional instructions (e.g. Security Guide, Security Classification Guide) attached? Des instructions supplémentaires (p. ex. Guide de sécurité, Guide de classification de la sécurité) sont-elles jointes?			<input checked="" type="checkbox"/> No / <input type="checkbox"/> Yes Non / Oui
16. Procurement Officer / Agent d'approvisionnement			
Name (print) - Nom (en lettres moulées) Azlyn Roslan	Title - Titre Procurement Specialist	Signature Roslan, Azlyn	<small>Digitally signed by Roslan, Azlyn DN: cn=AZLYN ROSLAN, ou=HRSDC, ou=HRSDC, ou=Service Canada, ou=Government of Canada Date: 2022.12.22 10:11:00-0500</small>
Telephone No. - N° de téléphone 613-794-1696	Facsimile No. - N° de télécopieur	E-mail address - Adresse courriel azlyn.roslan@hrsdcc.gc.ca	Date
17. Contracting Security Authority / Autorité contractante en matière de sécurité			
APPROVED By Denis Lecompte at 9:00 am, Dec 22, 2022		Title - Titre Lecompte, Denis	Digitally signed by Lecompte, Denis Date: 2022.12.22 09:02:16 -05'00'
Telephone No. - N° de téléphone	Facsimile No. - N° de télécopieur	E-mail address - Adresse courriel	Date

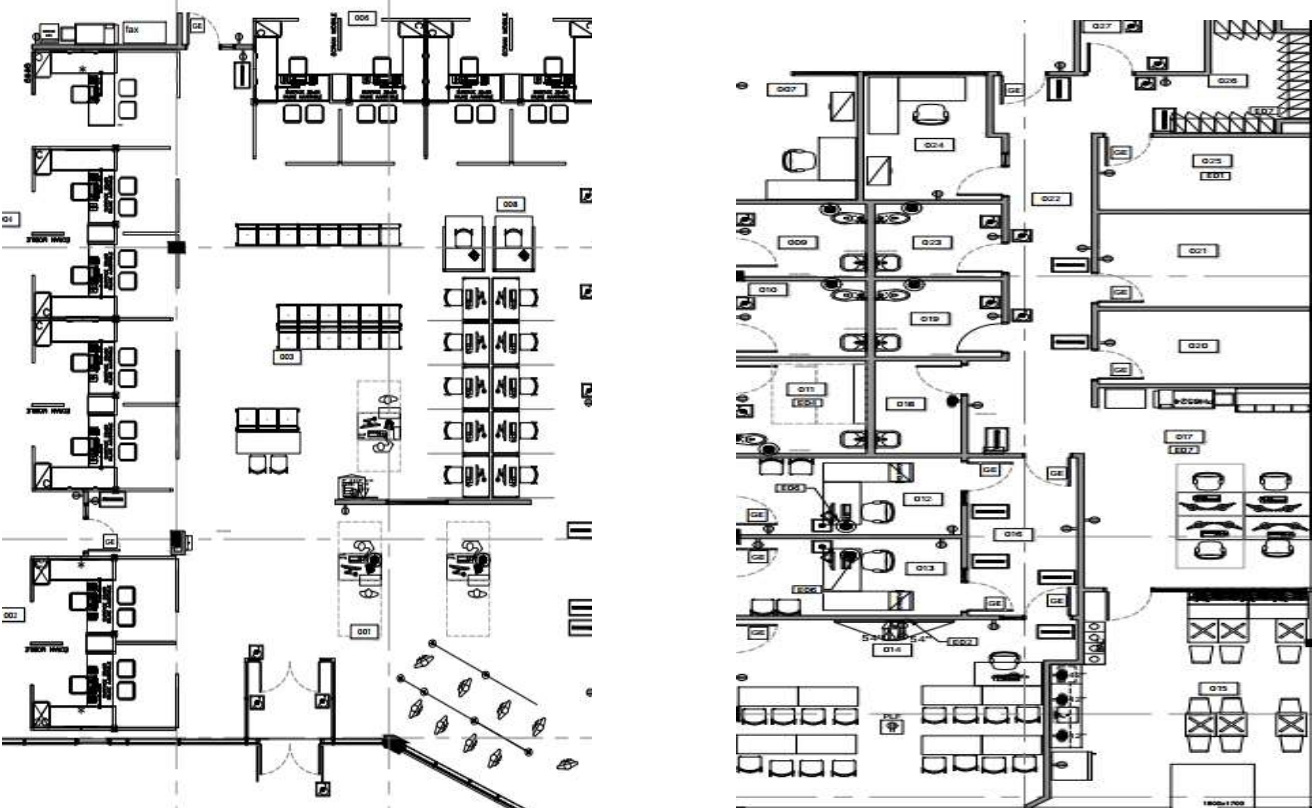
ANNEX C
FLOOR PLAN(S)

Please see attached floor plans:

a) CSC Laval



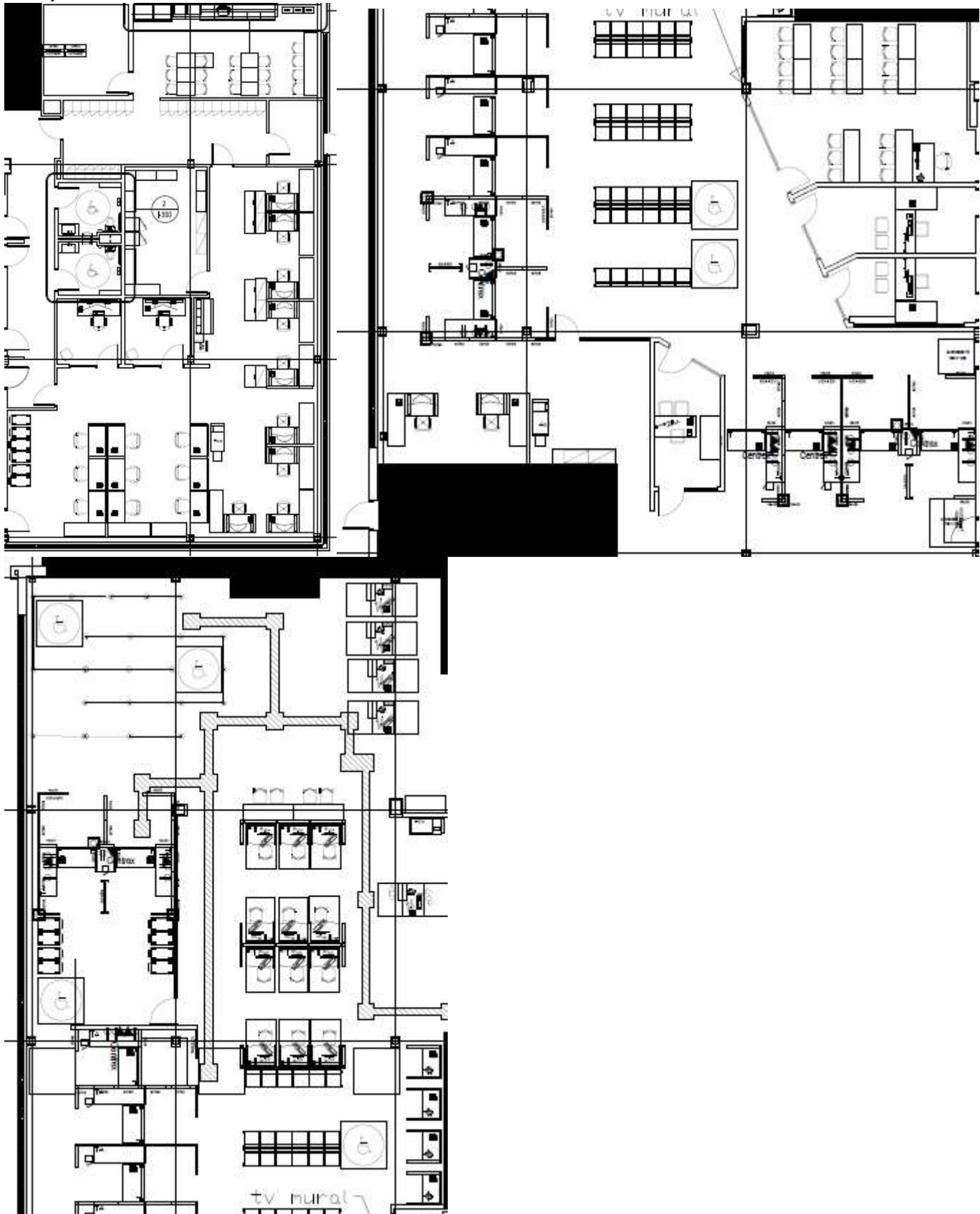
b) CSC Longueuil



c) CSC Thetford Mines



d) CSC Pointe-Claire





**ANNEX D
ADDITIONAL SPECIFICATIONS, CERTIFICATIONS**

This Annex includes the additional Specifications, Certifications associated with NSA product forming part of the requirement.

1. Certifications

1.1 NSA Product Conformance *(Required precedent to Issuance of a contract)*

The Supplier certifies that all the NSA products offered will conform to all specifications indicated in Annex A and D of the RFB, and meet the testing and performance requirements found at ANNEX A-1 and A-2 of the Supply Arrangement, as applicable.

Supplier's Signature

Date

NSA Product Conformance Certification *(applies after contract award)*

The Supplier warrants that the NSA Product Conformance Certification submitted by the Supplier with its bid is accurate and complete. The Supplier must keep proper records and documentation relating to the NSA product conformance and the testing requirements in this Annex, as applicable. The Supplier must not, without obtaining the prior written consent of the SAA, dispose of any such records or documentation until the expiration of the Contract or the expiry date of the Warranty, whichever is later. All such records and documentation must at all times during the retention period be open to audit, inspection and examination by the representatives of Canada, who may make copies and take extracts.

In addition, the Supplier must provide representatives of the SAA access to all locations where any part of the Work is being performed at any time during working hours. Representatives of the SAA may examine and test the Work as they see fit. The Supplier must provide all assistance and access to facilities, test pieces, samples and documentation that the representatives of the SAA may reasonably require for the carrying out of the inspection, which may also include the submission of test reporting documentation as listed in Annex A and D. The Supplier must forward such test pieces, samples and/or documentation that may also include letters of certification from the laboratories to such person or location as the representatives of the SAA specifies.