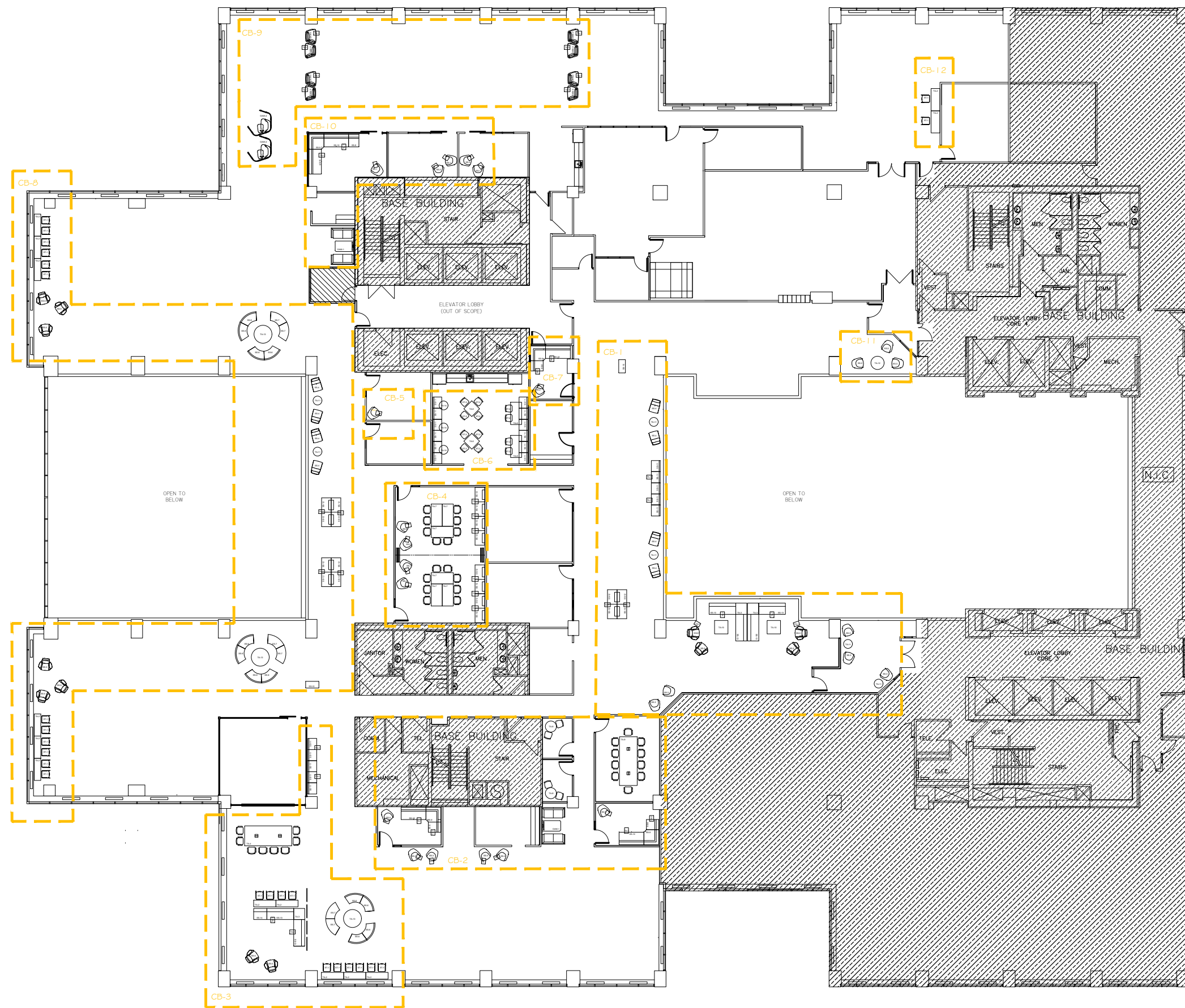


UNAUTHORIZED DISCLOSURE PROHIBITED

TYPICALS

SUPPLIED BEFORE MARCH 31 2024 AND  
 INSTALLATION BETWEEN APRIL 8 AUGUST 2024  
 (PENDING CONSTRUCTION)



revisions / date

Project / Projet

TC CANADA PLACE REFIT

9700 JASPER AVE.  
 EDMONTON, ALBERTA

Drawing / Dessin

COLLAB LAYOUT

Designed by / Conçu par

VALÉRIE THÉRIEN

Drawn by / Dessiné par

VALÉRIE THÉRIEN

Approved / Approuvé

Scale / Echelle / Date / Date

NTS / SEPT, 2023

Project number / No. du projet

ARTS-22-23-00678-05

Drawing number / No. du dessin / Page

N/A / 1 OF 3

# FURNITURE PARTS LIST - TOTALS

GOCUID	QTY	TAG	SIZE (HW)	DESCRIPTION
6CLTVAREXW7<36ONXX	42	TA-1	MAX 390 X 277 (W/D)	COLLABORATIVE TABLE, LAPTOP TABLE, RECTANGULAR WITH ROUNDED CORNERS, LAMINATE
6CNTCHREWLUW86G0UYYX	13	TA-2	1524X457 (W/D)	COLLABORATIVE TABLE, NARROW SIDE TABLE, RECTANGULAR, COUNTER HEIGHT, WATERFALL EDGE, LAMINATE
6MMTLGREOL54126WYXX	1	TA-4	3200X1372 (W/D)	MEETING ROOM TABLE, LARGE, RECTANGULAR WITH ROUNDED CORNERS, POST LEGS-COLUMNS, LAMINATE, POWER/DATA
6MMTSMQL36L36IWNXX	2	TA-5	914X914 (W/D)	MEETING ROOM TABLE, SMALL, SQUARE WITH ROUNDED CORNERS, POST LEGS, LAMINATE
6MMTSMRELL30L60WNNX	2	TA-6	1524X762 (W/D)	MEETING ROOM TABLE, SMALL, RECTANGULAR WITH ROUNDED CORNERS, POST LEGS, LAMINATE
6MTRTRRECL24L60WYYY	6	TA-7	1524X762 (W/D)	TRAINING ROOM TABLE, FLIP TOP, T LEGS, RECTANGULAR, LAMINATE, POWER/DATA, MODESTY PANEL AND LOCKING CASTERS
6MMTSMRPL30XXXWNNX	2	TA-8	762 dia.	TRAINING ROOM TABLE, SMALL, ROUND, PEDESTAL, LAMINATE, LOCKING CASTERS
6MMTLGREOL48132WYXX	1	TA-9	3353X1219 (W/D)	MEETING ROOM TABLE, LARGE, RECTANGULAR WITH ROUNDED CORNERS, POST LEGS-COLUMN, LAMINATE, POWER/DATA
6CCTVASQL36L36JNXX	2	TA-10	914X914 (W/D)	COLLABORATIVE TABLE, COFFEE TABLE, SQUARE, 4 POST LEGS, SOLID SURFACE
6CSTVAROPL24X00UNXX	6	TA-11	610 dia.	COLLABORATIVE TABLE, SIDE TABLE, ROUND, PEDESTAL, LAMINATE
6CCTVAROPL36X00UNXX	1	TA-12	914 dia.	COLLABORATIVE TABLE, COFFEE TABLE, ROUND, PEDESTAL, LAMINATE
6KBSChaSY1500POYY	24	ST-1	>15 (D)	KITCHENETTE SEATING-BAR STOOL, COUNTER HEIGHT POLYMER, SLED, WITHOUT ARMREST, SEAT CUSHION
6KKCSAwLY1600M0YY	12	ST-2	>16 (D)	KITCHENETTE SEATING, KITCHEN CHAIR, POLYMER, 4 LEGS, WITHOUT ARMREST, SEAT CUSHION
6STCWROXLU00000NXX	7	SS-1	N/A	SOFT SEATING, TABLET CHAIR WITH ARMREST-RIGHT UPHOLSTERED, LEGS WITH LOCKABLE CASTERS
6STCWLXLU00000NXX	6	SS-2	N/A	SOFT SEATING, TABLET CHAIR WITH ARMREST-LEFT, UPHOLSTERED, LEGS WITH LOCKABLE CASTERS
6SLCWA00WLU0000M0XX	12	SS-3	SEE MATRIX	SOFT SEATING, LOUNGE CHAIR WITH ARMREST-27" WIDE MINIMUM, UPHOLSTERED, SWIVEL
6SLC0A0XFLU0000M0XX	8	SS-4	SEE MATRIX	SOFT SEATING, LOUNGE CHAIR WITHOUT ARMREST-21" WIDE MINIMUM, UPHOLSTERED, FIXED/SLED BASE
6SLC0A0XFLU0000M0XX	12	SS-5	SEE MATRIX	SOFT SEATING, LOUNGE CHAIR WITH ARMREST-27" WIDE MINIMUM, UPHOLSTERED, FIXED/SLED BASE
6SMOCB0XLU37G19LYNN	12	SS-6	SEE MATRIX	SOFT SEATING, MODULAR BENCHING, CURVILINEAR BENCH, WITH BACK HEIGHT, UPHOLSTERED, LEGS, NO ARMRESTS
6SMOCB0XLU37G19LYNN	6	SS-7	SEE MATRIX	SOFT SEATING, MODULAR BENCHING, CURVILINEAR BENCH, WITHOUT BACK HEIGHT, UPHOLSTERED, LEGS, NO ARMRESTS
6SBBNXLUW1G19LMNN	4	SS-8	SEE MATRIX	SOFT SEATING, BANQUETTE WITH BACKREST BOLSTER, INDIVIDUAL, MID BACK, UPHOLSTERED, LEGS/SLED, NO ARMRESTS
6SBBTXLUW5G19LMNN	5	SS-10	SEE MATRIX	SOFT SEATING, BANQUETTE WITH BACKREST BOLSTER, THREE SEATER, MID BACK, UPHOLSTERED LEGS/SLED, NO ARMRESTS, POWER MODULE
6SBBNXLUW1G19LMNN	22	SS-11	SEE MATRIX	SOFT SEATING, BANQUETTE WITH BACKREST BOLSTER, INDIVIDUAL, MID BACK, UPHOLSTERED, LEGS, NO ARMRESTS
6SMORBZLU25G19LYNN	20	SS-12	SEE MATRIX	SOFT SEATING, MODULAR BENCHING, RECTILINEAR BENCH WITH BACK HEIGHT, LEGS
6SMORB0XLU25G19LYNN	6	SS-13	SEE MATRIX	SOFT SEATING, BANQUETTE WITH BACKREST BOLSTER, THREE SEATER, MID BACK, UPHOLSTERED, LEGS, POWER MODULE
6SMORB0XLU25G1GNNN	2	SS-15	SEE MATRIX	SOFT SEATING, MODULAR BENCHING, RECTILINEAR BECHN, WITHOUT BACK, UPHOLSTERED, LEGS,
6OGWFFSUXC2H47XYXX	2	OAW-1	2438 (DIA)	OPEN AREA WORKSPACE, GROUP WORK PODS, WITH SOFA AND WORK SURFACE, WITH POWER DATA

GOCUID	QTY	TAG	SIZE	DESCRIPTION
N/A	3	TA-3	762X762(W/D)	COLLABORATIVE TABLE, SIDE TABLE, SQUARE, LEGS, SOLID SURFACE
N/A	3	TA-13	1219 dia.	COLLABORATIVE TABLE, COFFEE TABLE, ROUND, PEDESTAL, LAMINATE
N/A	3	TA-14	610 dia.	COLLABORATIVE TABLE, ROUND, PEDESTAL OR FIXED TO BANQUETTE SS-11/COMBINED TO SS-11, LAMINATE
N/A	4	SS-9	SEE MATRIX	SOFT SEATING, BANQUETTE WITH BACKREST BOLSTER, INDIVIDUAL, CORNER 90 DEGREE, MID BACK, UPHOLSTERED, LEGS/SLED, NO ARMRESTS
N/A	1	SS-14	SEE MATRIX	SOFT SEATING, BANQUETTE WITH BACKREST BOLSTER, INDIVIDUAL, MID BACK, UPHOLSTERED, LEGS, NO ARMRESTS
N/A	2	OAW-2	SEE MATRIX	OPEN AREA WORKSPACE, INDIVIDUAL PRIVATE LOUNGE CHAIRS AND WORK SURFACE, TABLET ARM, FREE STANDING, LEGS
N/A	5	OAW-3	SEE MATRIX	OPEN AREA WORKSPACE, INDIVIDUAL PRIVATE LOUNGE CHAIRS AND WORK SURFACE, FREE STANDING, LEGS

**TA-1** TABLE: COLLABORATIVE TABLE, LAPTOP TABLE. DIMENSIONS: max 390 (W) x 277 (D). MATERIAL: LAMINATE. SUPPORT: post legs.

**TA-2** TABLE: COLLABORATIVE TABLE, NARROW SIDE TABLE. DIMENSIONS: max 1524 (W) x 457 (D). MATERIAL: LAMINATE. SUPPORT: post legs.

**TA-3** TABLE: COLLABORATIVE TABLE, SIDE TABLE. DIMENSIONS: max 762 (W) x 762 (D). MATERIAL: SOLID SURFACE. SUPPORT: post legs.

**TA-4** TABLE: MEETING AND TRAINING TABLE, MEETING TABLE. DIMENSIONS: max 3200 (W) x 1372 (D). MATERIAL: LAMINATE. SUPPORT: post legs-columns. POWER/DATA: yes.

**TA-5** TABLE: MEETING ROOM TABLE, MEETING TABLE. DIMENSIONS: max 914 (W) x 914 (D). MATERIAL: LAMINATE. SUPPORT: post legs.

**TA-6** TABLE: MEETING ROOM TABLE, MEETING TABLE. DIMENSIONS: max 1524 (W) x 762 (D). MATERIAL: LAMINATE. SUPPORT: post legs.

**TA-7** TABLE: MEETING AND TRAINING TABLE, TRAINING TABLE. DIMENSIONS: max 1524 (W) x 762 (D). MATERIAL: LAMINATE. SUPPORT: post legs. MODESTY PANEL: yes.

**TA-8** TABLE: TRAINING ROOM TABLE, SMALL, ROUND, PEDESTAL, LAMINATE, LOCKING CASTERS. DIMENSIONS: 762 dia. MATERIAL: LAMINATE. SUPPORT: pedestal.

**TA-9** TABLE: MEETING ROOM TABLE, LARGE, RECTANGULAR WITH ROUNDED CORNERS, POST LEGS-COLUMN, LAMINATE, POWER/DATA. DIMENSIONS: max 3353 (W) x 1219 (D). MATERIAL: LAMINATE. SUPPORT: post legs-columns. POWER/DATA: yes.

**TA-10** TABLE: COLLABORATIVE TABLE, COFFEE TABLE, SQUARE, 4 POST LEGS, SOLID SURFACE. DIMENSIONS: 914 (W) x 914 (D). MATERIAL: SOLID SURFACE. SUPPORT: post legs.

**TA-11** TABLE: COLLABORATIVE TABLE, SIDE TABLE, ROUND, PEDESTAL, LAMINATE. DIMENSIONS: 610 dia. MATERIAL: LAMINATE. SUPPORT: pedestal.

**TA-12** TABLE: COLLABORATIVE TABLE, COFFEE TABLE, ROUND, PEDESTAL, LAMINATE. DIMENSIONS: 914 dia. MATERIAL: LAMINATE. SUPPORT: pedestal.

**TA-13** TABLE: COLLABORATIVE TABLE, COFFEE TABLE. DIMENSIONS: max 1219 (W) x 1219 (D). MATERIAL: LAMINATE. SUPPORT: pedestal.

**TA-14** TABLE: COLLABORATIVE TABLE, COFFEE TABLE. DIMENSIONS: max 610 (W) x 610 (D). MATERIAL: LAMINATE. SUPPORT: pedestal.

**ST-1** KITCHENETTE SEATING-BAR STOOL, COUNTER HEIGHT POLYMER, SLED, WITHOUT ARMREST, SEAT CUSHION. SEAT HEIGHT: 19". SEAT WIDTH: >15 (D).

**ST-2** KITCHENETTE SEATING, KITCHEN CHAIR, POLYMER, 4 LEGS, WITHOUT ARMREST, SEAT CUSHION. SEAT HEIGHT: 19". SEAT WIDTH: >16 (D).

**SS-1** SOFT SEATING, TABLET CHAIR WITH ARMREST-RIGHT UPHOLSTERED, LEGS WITH LOCKABLE CASTERS. SEAT HEIGHT: 19". SEAT WIDTH: >16 (D).

**SS-2** SOFT SEATING, TABLET CHAIR WITH ARMREST-LEFT, UPHOLSTERED, LEGS WITH LOCKABLE CASTERS. SEAT HEIGHT: 19". SEAT WIDTH: >16 (D).

**SS-3** SOFT SEATING, LOUNGE CHAIR WITH ARMREST-27" WIDE MINIMUM, UPHOLSTERED, SWIVEL. SEAT HEIGHT: 19". SEAT WIDTH: >16 (D).

**SS-4** SOFT SEATING, LOUNGE CHAIR WITHOUT ARMREST-21" WIDE MINIMUM, UPHOLSTERED, FIXED/SLED BASE. SEAT HEIGHT: 19". SEAT WIDTH: >16 (D).

**SS-5** SOFT SEATING, LOUNGE CHAIR WITH ARMREST-27" WIDE MINIMUM, UPHOLSTERED, FIXED/SLED BASE. SEAT HEIGHT: 19". SEAT WIDTH: >16 (D).

**SS-6** SOFT SEATING, MODULAR BENCHING, CURVILINEAR BENCH, WITH BACK HEIGHT, UPHOLSTERED, LEGS, NO ARMRESTS. SEAT HEIGHT: 19". SEAT WIDTH: >16 (D).

**SS-7** SOFT SEATING, MODULAR BENCHING, CURVILINEAR BENCH, WITHOUT BACK HEIGHT, UPHOLSTERED, LEGS, NO ARMRESTS. SEAT HEIGHT: 19". SEAT WIDTH: >16 (D).

**SS-8** SOFT SEATING, BANQUETTE WITH BACKREST BOLSTER, INDIVIDUAL, MID BACK, UPHOLSTERED, LEGS/SLED, NO ARMRESTS. SEAT HEIGHT: 19". SEAT WIDTH: >16 (D).

**SS-9** SOFT SEATING, BANQUETTE WITH BACKREST BOLSTER, INDIVIDUAL, CORNER 90 DEGREE, MID BACK, UPHOLSTERED, LEGS/SLED, NO ARMRESTS. SEAT HEIGHT: 19". SEAT WIDTH: >16 (D).

**SS-10** SOFT SEATING, BANQUETTE WITH BACKREST BOLSTER, THREE SEATER, MID BACK, UPHOLSTERED LEGS/SLED, NO ARMRESTS, POWER MODULE. SEAT HEIGHT: 19". SEAT WIDTH: >16 (D).

**SS-11** SOFT SEATING, BANQUETTE WITH BACKREST BOLSTER, INDIVIDUAL, MID BACK, UPHOLSTERED, LEGS, NO ARMRESTS. SEAT HEIGHT: 19". SEAT WIDTH: >16 (D).

**SS-12** SOFT SEATING, MODULAR BENCHING, RECTILINEAR BENCH WITH BACK HEIGHT, LEGS. SEAT HEIGHT: 19". SEAT WIDTH: >16 (D).

**SS-13** SOFT SEATING, BANQUETTE WITH BACKREST BOLSTER, THREE SEATER, MID BACK, UPHOLSTERED, LEGS, POWER MODULE. SEAT HEIGHT: 19". SEAT WIDTH: >16 (D).

**SS-14** SOFT SEATING, MODULAR BENCHING, RECTILINEAR BENCH, WITHOUT BACK, UPHOLSTERED, LEGS. SEAT HEIGHT: 19". SEAT WIDTH: >16 (D).

**SS-15** SOFT SEATING, MODULAR BENCHING, RECTILINEAR BENCH, WITHOUT BACK, UPHOLSTERED, LEGS. SEAT HEIGHT: 19". SEAT WIDTH: >16 (D).

**OAW-1** OPEN AREA WORKSPACE, GROUP WORK PODS, WITH SOFA AND WORK SURFACE, WITH POWER DATA. DIA: 2438.

**OAW-2** OPEN AREA WORKSPACE, INDIVIDUAL PRIVATE LOUNGE CHAIRS AND WORK SURFACE, TABLET ARM, FREE STANDING, LEGS. DIA: 40".

**OAW-3** OPEN AREA WORKSPACE, INDIVIDUAL PRIVATE LOUNGE CHAIRS AND WORK SURFACE, FREE STANDING, LEGS. DIA: 40".

NOT IN CONTRACT



TASK CHAIR

UNAUTHORIZED DISCLOSURE PROHIBITED

SUPPLIED BEFORE MARCH 31 2024 AND INSTALLATION BETWEEN APRIL 8 AUGUST 2024 (PENDING CONSTRUCTION)

revisions	date
Project	Project
TC CANADA PLACE REFIT	
9700 JASPER AVE. EDMONTON, ALBERTA	
Drawing	Design
COLLAB MATRIX	
Designed by	Conçu par
VALÉRIE THÉRIEN	
Drawn by	Designé par
VALÉRIE THÉRIEN	
Approved	Approuvé
Scale	Echelle
NTS	
Date	Date
SEPT, 2023	
Project number	No. du projet
ARTS-22-23-00678-05	
Drawing number	No. du dessin
N/A	
Page	Page
2 OF 3	