

--	--

Canada 

RETURN BIDS TO:

RETOURNER LES SOUMISSIONS À:

See Section 1.

Voir Section 1.

STANDARD REQUEST FOR BID

INVITATION À SOUMISSIONNER - STANDARD

The Bidder offers to provide to Canada the goods, services or both listed in the bid solicitation in accordance with the conditions set out in the bid solicitation and the prices set out in the bid.

This bid solicitation is issued in accordance with the conditions of the Supply Arrangement E60PQ-140003/PQ.

Le soumissionnaire offre de fournir au Canada les biens, services ou les deux énumérés dans la demande de soumissions aux conditions prévues dans la demande de soumissions et aux prix indiqués dans la soumission.

Cette demande de soumissions est émise conformément aux conditions de l'arrangement en matière d'approvisionnement E60PQ-140003/PQ.

<p>Solicitation No. - N° de la demande : 100025200</p> <p>Supplier SA No. - N° de l'AMA de fournisseur : E60PQ-140003/C</p>	<p>Amendment No. - N° de modification</p>
---	---

<p>Solicitation closes – La demande prend fin :</p> <p>at – à See Section 1 Voir Section 1</p> <p>on – le See Section 1 Voir Section 1</p>	<p>File No. - N° de dossier</p>
---	---------------------------------

Canada 

TABLE OF CONTENTS

Section 1 – Invitation and Instructions to Bidders
 Section 2 – Resulting Contract including a list of required goods and services

SECTION 1 – INVITATION AND INSTRUCTIONS TO BIDDERS**Step 1. For Tier 2 and Tier 3 only (If Tier 1, skip this step and proceed with step 2)**

Is this a Manufacturer Product Specific Procurement? **(No)**.

Step 2. Competitive or Non-Competitive

A bid must comply with the requirements of the bid solicitation and meet all mandatory technical evaluation criteria to be declared responsive. The responsive bid with the lowest evaluated price will be recommended for award of a contract.

Canada will assess bids and award contracts on a per category basis. For administrative purposes, in the event a same bidder wins more than one category, Canada may issue a single contract containing the categories won by the same bidder.

For Competitive Requirements when only one bid is received:

The Bidder must provide the following information AFTER bid closing, if requested to do so by Canada:

- One or more of the following price justifications:
 1. a current published price list indicating the percentage discount available to Canada; or
 2. a copy of paid invoices for the like quality and quantity of the goods, services or both sold to other customers; or
 3. a price breakdown showing the cost of direct labour, direct materials, purchased items, engineering and plant overheads, general and administrative overhead, transportation, etc., and profit; or
 4. any other supporting documentation as requested by Canada.

Step 3. General or PSIB**Terms of the RFB:**

This RFB is issued pursuant to the Supplier's Furniture for Workspaces Supply Arrangement (SA) that forms part of the series of SAs issued by PWGSC with the number E60PQ-140003/PQ. The terms and conditions in the Supplier's SA apply

Date of Solicitation – Date de la demande	
January 30, 2024	
Address inquiries to – Adresser toute demande de renseignement à :	
See Section 2, Article 4.1. Voir Section 2, Article 4.1	
Destination	
See Section 2, Annex A. Voir Section 2, Annexe A.	
Instructions:	
Municipal taxes are not applicable.	
Unless otherwise specified in the bid solicitation, all prices quoted must be net prices in Canadian funds including Canadian customs duties, excise taxes, must be FOB, including all delivery charges to destination(s) as indicated. The amount for Applicable Taxes is to be shown as a separate item.	
Instructions:	
Les taxes municipales ne s'appliquent pas.	
Sauf indication contraire dans la demande de soumissions, tous les prix indiqués doivent être des prix nets, en dollars canadiens, comprenant les droits de douane canadiens, la taxe d'accise et doivent être FAB, y compris tous frais de livraison à la (aux) destination(s) indiqué(s). Le montant des taxes applicables doit apparaître séparément.	
Supplier Name and Address – Nom et adresse du fournisseur	
Telephone No. - N° de téléphone	
Facsimile No. - N° de télécopieur	
Name and title of person authorized to sign on behalf of supplier (type or print)	
Nom et titre de la personne autorisée à signer au nom du fournisseur (caractère d'impression)	
Signature : _____ Date : _____	

to and form part of this RFB. Bidders who submit a bid agree to be bound by those terms and conditions as well as the terms and conditions in this RFB.

The WTCM is the Workspaces Terms and Conditions Manual that contains all terms and conditions in full text that form part of individual RFBs under this SA.

The Bidder must provide the following information WITH the bid:

- The information requested by Canada in Annex A herein.

Security Requirement: There is no security requirement applicable to the Contract.

Bid Evaluation: An evaluation team composed of representatives of Canada will evaluate the bids.

RFB Issued by:	
Identified User's (IU) Department/Agency/Crown Corporation: Contact for this RFB:	See Section 2, article 4.1 below.
RFB Closing - Submit Bid:	
Bids must be submitted on the date and at the time indicated below.	
By no later than date and time:	[February 19, 2024] [14:00][EST]
To e-mail address:	[NC-SOLICITATIONS-GD@hrsdcc-rhdcc.gc.ca]
RFB Enquiries	
Unless a different period is listed in the adjacent column, Bidders may submit enquires about the RFB to the Contracting Authority two business days prior to the RFB closing date. Enquiries received after the timeline indicated may not be answered.	[February 13, 2024] [14:00][EST]

SECTION 2 - RESULTING CONTRACT CLAUSES

SECTION 2 - RESULTING CONTRACT CLAUSES

1.	Terms and Conditions of the Contract	
	The terms and conditions of Parts 6B and 6C of the Supplier's SA within the series E60PQ-140001/C apply to and form part of this Contract.	
2.	Security Requirement (the checked article applies)	
2.1	The applicable security requirement(s) is (are) set out in the Security Requirement Check List attached as Annex B of this contract. The Contractor must fulfill the security requirements by meeting the terms below.	
a.	<input type="checkbox"/>	Contractor may be escorted; possession of security clearance not required. Contractor personnel MAY NOT ENTER NOR PERFORM WORK ON sites where PROTECTED or CLASSIFIED information or assets are kept, without an escort provided by the department or agency for which the work is being performed.
b.	<input type="checkbox"/>	Possession of security clearance(s) is required. The Contractor must meet the security clearance requirements contained in the clausing in Annex B herein.
c.	<input checked="" type="checkbox"/>	There is no security requirement associated with this contract.
3.	Requirement	
3.1	The Contractor must perform the Work listed in Annex A herein.	
4.	Authorities	
4.1	Contracting Authority (IU)	
	Name:	Kimberly Hutchings
	Title:	Procurement Specialist
	Department/Agency/Crown Corporation:	Employment and Social Development Canada
	Address:	140 Promenade du Portage, Gatineau, QC
	Telephone No.:	<i>[To be completed at contract award]</i>
	E-mail address:	NC-SOLICITATIONS-GD@hrsdc-rhdcc.gc.ca
4.2	Project Authority <i>[To be completed at contract award]</i> <i>The Project Authority (PA) is the representative of the department or agency for whom the Work is being carried out under the Contract including the provision to approve the authority to proceed for delivery and installation and is responsible for all matters concerning the technical content of the Work under the Contract.</i> <i>In addition, the PA is also responsible for ensuring that the Supplier's employees and subcontractors requiring access to the site adhere to the allocated time for the Supplier to access the site to deliver and install the furniture in accordance with the master schedule held by the General Contractor (a representative of Canada or a service provider(s) under contract with the Government of Canada).</i>	
	Name:	
	Title:	
	Department/Agency/Crown Corporation:	
	Address:	
	Telephone No.:	
	E-mail address:	
4.3	Contractor's Representative	
	As set out in Annex A, Table 9 below.	
5.	Method of Payment	
	The checked box applies. If the Contractor's SA indicates acceptance for payment by credit card, that method may be used in conjunction with the following.	
	<input type="checkbox"/>	Single Payment
	<input type="checkbox"/>	Multiple Payment
6.	Invoicing	

Further to the Invoicing terms of the WTCM document, the Contractor will deliver the original and one copy of the invoice to the following address for certification and payment:
Name of the organization and contact: <i>[To be completed at contract award]</i>
Address: <i>[To be completed at contract award]</i>

ANNEX A
REQUIREMENT and BASIS OF PAYMENT

1. Category Selection

Design Upgrade Rule:

The IU may exercise an option to upgrade products up to 20% of each Category product total before Applicable Taxes after contract award.

The Design Upgrade amount is used at the discretion of the Project Authority (PA) **prior to the manufacturing/ordering of the products**, the PA will provide the Contractor with a written notice of Canada's Design Upgrade choices for each of the product(s) to be upgraded. The Contractor will provide the pricing of the upgraded product(s) to a maximum of 20% of each Category Contract Price of Table 8. The Contracting Authority will issue an amendment to the contract with the Design Upgrades and pricing.

The Supplier certifies that all the Design Upgraded products offered will conform to all specifications and meet the testing requirements detailed in the Specifications of the Supply Arrangement.

Design Upgrade: is the process of replacing a product with a more innovative or enhanced version of the same product.

NSA:

NSA products can be incorporated in the RFB and must not exceed 30% of the firm quantity by category. NSA items must be added to the category that is most closely related and must be generic.

The requirement includes the following category (ies) of work :

a. Category 1 – Interconnecting Panels and Freestanding Systems

Category 1a – Interconnecting Panels (Refer to Annex C)

Category 1b – Supporting components and freestanding furniture

RULE: Metal Storage

Identified Users may procure metal storage products forming part of Category 1 when the metal storage products will be part of a requirement for a workstation(s)/work point(s). If this rule does not apply, Category 3 must be used for the metal storage products forming part of this category.

b. Category 2 – Freestanding Height Adjustable Desk / Table Products

c. Category 3 – Metal Filing and Storage Cabinets

Identifying the maximum height of the Personal Storage Towers, Wardrobes and Storage Cabinets is acceptable as per 6B. 4.1 of the SA (table 1 Additional product details)

d. Category 4 – Wood Veneer – Freestanding Products

e. Category 5 – Ancillary and Lighting Products

f. Category 6 - Support Space – Collaborative Furniture

RULE: Category 6 can be further subdivided by space or like product in order to increase or allow competition. Space is defined as a location available for a particular purpose such as a meeting room space or a collaborative space. Like products are defined as products with similar design and construction. If NSA products form part of the requirement, the IU must validate the 30% NSA prior to subdividing the category. NSA products can be added to any subdivide or in its own subdivide.

The IU must identify how Category 6 will be subdivided in the Product Table for Category 6.

g. NSA Product(s) – Category(ies): 1a

2. Product and Pricing Tables

Site Inspection Date: To be coordinated with Project Authority after contract award. (Refer to Annex A article 4 of the SA for Site Inspection and Documentation instructions.)

INSTRUCTIONS TO BIDDERS: Bidders are to complete Sections B of the tables identified by the IU in this article as well as Tables 5 and 6. Bidders must provide a complete product offering for each category, or CAT 6 sub-divide they wish to submit a bid in order to be compliant.

****Refer to article 6A.7 for instructions on how to submit products that are not approved in product listing.****

In a resulting contract, the term "Bid" means the Supplier's commitment, the term "Bidder" means "Contractor".

Product Category: 1A

Table 1 – Product Table

Section A - IU REQUIREMENT				Section B – SUPPLIER'S BID			
#	GoCUID	Description of Product <i>(Additional product details may be inserted, if required as per 6B. 4.1 of the SA)</i>	QTY	** Provide additional Information Yes/No	Supplier Part Number	Firm Unit Price \$	Extended Total [Qty x Price] \$
1	No GoCUID	Base Height Power: Non-Powered Lower Element 1: Fabric Lower Element 2: Fabric Width: 24" Height: 28"-38"	1	Yes		\$	\$
2	No GoCUID	Base Height Power: Non-Powered Lower Element 1: Plastic Laminate Lower Element 2: Plastic Laminate Width: 24" Height: 28"-38"	3	Yes		\$	\$
3	No GoCUID	Base Height Power: Powered outlets below work surface Lower Element 1: Cut-outs for power and data, fabric Lower Element 2: Fabric Width: 24" Height: 28"-38"	2	Yes		\$	\$
4	No GoCUID	Base Height Power: Non-Powered Lower Element 1: Fabric Lower Element 2: Fabric Width: 30" Height: 28"-38"	3	Yes		\$	\$
5	No GoCUID	Base Height Power: Non-Powered Lower Element 1: Plastic Laminate Lower Element 2: Plastic Laminate Width: 30" Height: 28"-38"	3	Yes		\$	\$
6	No GoCUID	Base Height Power: Powered outlets below work surface Lower Element 1: Cut-outs for power and data, fabric Lower Element 2: Fabric Width: 30" Height: 28"-38"	3	Yes		\$	\$
7	No GoCUID	Base Height Power: Powered outlets below work surface	2	Yes		\$	\$

		Lower Element 1: Cut-outs for power and data, fabric Lower Element 2: Cut-outs for power and data, fabric Width: 30" Height: 28"-38"					
8	No GoCUID	Base Height Power: Non-Powered Lower Element 1: Fabric Lower Element 2: Fabric Width: 36" Height: 28"-38"	1	Yes		\$	\$
9	No GoCUID	Base Height Power: Powered outlets below work surface Lower Element 1: Cut-outs for power and data, fabric Lower Element 2: Cut-outs for power and data, fabric Width: 36" Height: 28"-38"	2	Yes		\$	\$
10	No GoCUID	Base Height Power: Non-Powered Lower Element 1: Plastic Laminate Lower Element 2: Plastic Laminate Width: 42" Height: 28"-38"	3	Yes		\$	\$
11	No GoCUID	Base Height Power: Powered outlets below work surface Lower Element 1: Cut-outs for power and data, fabric Lower Element 2: Cut-outs for power and data, fabric Width: 42" Height: 28"-38"	7	Yes		\$	\$
12	No GoCUID	Base Height Power: Powered outlets below work surface Lower Element 1: Cut-outs for power and data, fabric Lower Element 2: Fabric Width: 48" Height: 28"-38"	2	Yes		\$	\$
13	No GoCUID	Base Height Power: Non-Powered Lower Element 1: Plastic Laminate Lower Element 2: Plastic Laminate Width: 54" Height: 28"-38"	2	Yes		\$	\$
14	No GoCUID	Seated Privacy Height Add On Power: Non-Powered Lower Element 1: Fabric Lower Element 2: Fabric Upper Element 1: Fabric	3	Yes		\$	\$

		Upper Element 2: Fabric Width: 30" Height: 50"-54"					
15	No GoCUID	Seated Privacy Height Add On Power: Powered outlets below work surface Lower Element 1: Cut-outs for power and data, fabric Lower Element 2: Fabric Upper Element 1: Fabric Upper Element 2: Fabric Width: 24" Height: 50"-54"	2	Yes		\$	\$
16	No GoCUID	Seated Privacy Height Add On Power: Powered outlets below work surface Lower Element 1: Cut-outs for power and data, fabric Lower Element 2: Fabric Upper Element 1: Fabric Upper Element 2: Fabric Width: 30" Height: 50"-54"	3	Yes		\$	\$
17	No GoCUID	Seated Privacy Height Add On Power: Powered outlets below work surface Lower Element 1: Cut-outs for power and data, fabric Lower Element 2: Fabric Upper Element 1: Fabric Upper Element 2: Fabric Width: 48" Height: 50"-54"	2	Yes		\$	\$
18	No GoCUID	Seated Privacy Height Add On Power: Powered outlets below work surface Lower Element 1: Plastic laminate Lower Element 2: Plastic laminate Upper Element 1: Cut-outs for power and data, fabric Upper Element 2: Fabric Width: 42" Height: 50"-54"	7	Yes		\$	\$

Additional information:

Canada is requesting bidders to provide drawings and/or pictures including descriptive literature for these products with your bid submission.

See Appendix C and Floor Plans

NSA products <i>(must not exceed 30% of the firm quantity by category)</i>						
The Supplier signs, and certifies that all the NSA products offered will conform to all specifications and meet the testing requirements detailed at Annex D.						
Section A - IU REQUIREMENT			Section B – SUPPLIER'S BID			
#	NON-SA Product(s)	QTY	** Provide additional Information Yes/No	Supplier Part Number	Firm Unit Price \$	Extended Total [Qty x Price] \$
1	Power Pole Ceiling height is 9'10". Two power poles to accommodate seated privacy height and 2 power poles to accommodate standing privacy height.	4	Yes		\$	\$
2	12" Panel Required in the Service Stations (107) to support sliding privacy door and POS cut-out.	3	Yes			
3	12"x30" shelf Required in the Service Stations (107) to support sliding privacy door and POS cut-out.	1	Yes		\$	\$
4	Sliding Door Sliding privacy door situated between service stations. Must span a 63" space.	1	Yes		\$	\$
5	Panel Topper 42" long Required to achieve standing privacy height. Glazed glass insert. No Power.	3	Yes		\$	\$
6	Panel Topper 54" long Required to achieve standing privacy height. Fabric. No Power.	2	Yes		\$	\$
7	Panel Topper 30" long Required to achieve standing privacy height. Glazed glass insert. No Power.	3	Yes		\$	\$
8	Panel Topper 30" long Required to achieve standing privacy height. Fabric. Data and electrical cut-out required on powered lower panel.	2	Yes		\$	\$
9	Panel Topper 36" long Required to achieve standing privacy height. Fabric. No Power.	1	Yes		\$	\$
10	Panel Topper 36" long Required to achieve standing privacy height. Fabric. Data and electrical cut-out required on powered lower panel.	2	Yes		\$	\$
11	Panel Topper 24" long	1	Yes		\$	\$

	Required to achieve standing privacy height.					
<p>Additional Information: Canada is requesting bidders: to provide drawings and/or pictures including descriptive literature for these products with your bid submission. See Appendix C and floor plans.</p>				Product Total		\$

Table 2 - Delivery

Section A - IU REQUIREMENT				Section B – SUPPLIER’S BID	
Product Item # from Table 1A & 1B	Location	Desired Date** (YYYY-MM-DD)	Desired Time: Normal Business Hours Or Outside Normal Business Hours *	Supplier will supply and deliver as per below**	Firm Lot Price \$
Table 1A- Item #1-#18 Table 1B- Item #1-#11	11 – 279 Broadway St Yorkton SK S3N 4B2	2024-03-18	[NORMAL]	_____ : weeks <i>Standard Lead time is between 6-10 weeks for furniture delivery and installation.</i>	\$
<p>*Normal Business Hours 8:00 – 17:00, as per SA, Annex A, article 5</p> <p>**The Project Authority (PA) will provide the supplier the authority to proceed prior to the finalized delivery date taking into consideration the delivery time provided by the supplier. Canada will not be responsible if the supplier chooses to proceed without the PA authorization.</p>				Delivery Total:	\$

Table 3 – Installation

Section A - IU REQUIREMENT				Section B – SUPPLIER’S BID	
Product Item # from Table 1	Location	Desired Date** (YYYY-MM-DD)	Desired Time: Normal Business Hours Or Outside Normal Business Hours *	Supplier will install as per below**	Firm Lot Price \$
Table 1A- Item #1-#18 Table 1B- Item #1-#11	11 – 279 Broadway St Yorkton SK S3N 4B2	2024-03-18	[Normal]	_____ : weeks from date of supply and delivery <i>Standard Lead time is between 6-10 weeks for furniture delivery and installation.</i>	\$
<p>*Normal Business Hours 8:00 – 17:00, as per SA, Annex A, article 5</p> <p>**The Project Authority (PA) will provide the supplier the authority to proceed prior to the finalized installation date taking into consideration the installation time provided by the supplier. Canada will not be responsible if the supplier chooses to proceed without the PA authorization.</p> <p><i>Add more rows if necessary.</i></p>				Installation Total:	\$

Table 4 – Standard Finishes and Canada’s Facilities to Accommodate the Delivery and Certifications

1.	Standard Finishes	
1.1	<p>IU is to consult the Supplier’s Website identified in Part 6A of the SA to view the available finishes.</p> <p>Within ten business days of the contract award, the Project Authority will provide the Contractor with a written notice of Canada’s finish choices for each of the product(s) in Annex A.</p> <p>The Contractor will deliver the products corresponding to Canada’s choice of specific finishes(s). No additional charge will be applied to Canada.</p>	
2.	<p>Canada’s Facilities to Accommodate the Delivery</p> <p><i>The Supplier’s employees and subcontractors requiring access to the site must adhere to the health and safety plans established for the site, in addition to any laws in effect in the jurisdiction where the work is being performed.</i></p> <p><i>During the period of the contract, a representative of Canada or a service provider(s) under contract with the Government of Canada may request the list of employees and subcontractors requiring access to the site to perform the work and their security statuses. Information must be provided in the timeframe prescribed in order to ensure that the supply, delivery and installation of the furniture aligns with the master schedule.</i></p>	
2.1	Loading Dock/Location	
A	Location	11 – 279 Broadway St Yorkton SK S3N 4B2
B	Dock	None
C	Lift	Does not exist
D	Door	Standard building door approx. 36”
E	Freight Elevator	None
F	Other (specify, if any)	
3.	Continuance of Certifications	
	<p>The Bidder certifies that by submitting a bid in response to the RFB, the Bidder, and any of the Bidder’s members if the Bidder is a Joint Venture, continues to comply with all of the following certifications listed in Parts 6A and 6B of the Bidder’s SA for Work Spaces.</p> <p>Canada may request copies of environmental certification(s) prior to contract award within a time period specified by the Identified User.</p>	
3.1	Integrity Provisions	
3.2	Federal Contractor’s Program for Employment Equity	
3.4	Product Conformance	
3.5	Price Certification (In accordance with the SA, Part 6B)	

Table 5 - Bid Evaluation and Contract Total*(Canada may complete if not completed by the Bidder)*

1	Firm Product Total (Table 1)	\$
2	Firm Delivery Total (Table 2)	\$
3	Firm Installation Total (Table 3)	\$
4	Hardware Total as per article 1.5 of Annex A-1 of SA <i>(if Applicable)</i>	\$
5	Total Evaluated (Bid) Price* (1 + 2 + 3 + 4) <i>[to be removed at contract award]</i>	\$
6	Contract Price(1 + 2 + 3 + 4): <i>[applicable at contract award only]</i>	\$
7	Applicable Tax(es): <i>[applicable at contract award only]</i>	\$
8	Total Estimated Cost (6 + 7): <i>[applicable at contract award only]</i>	\$

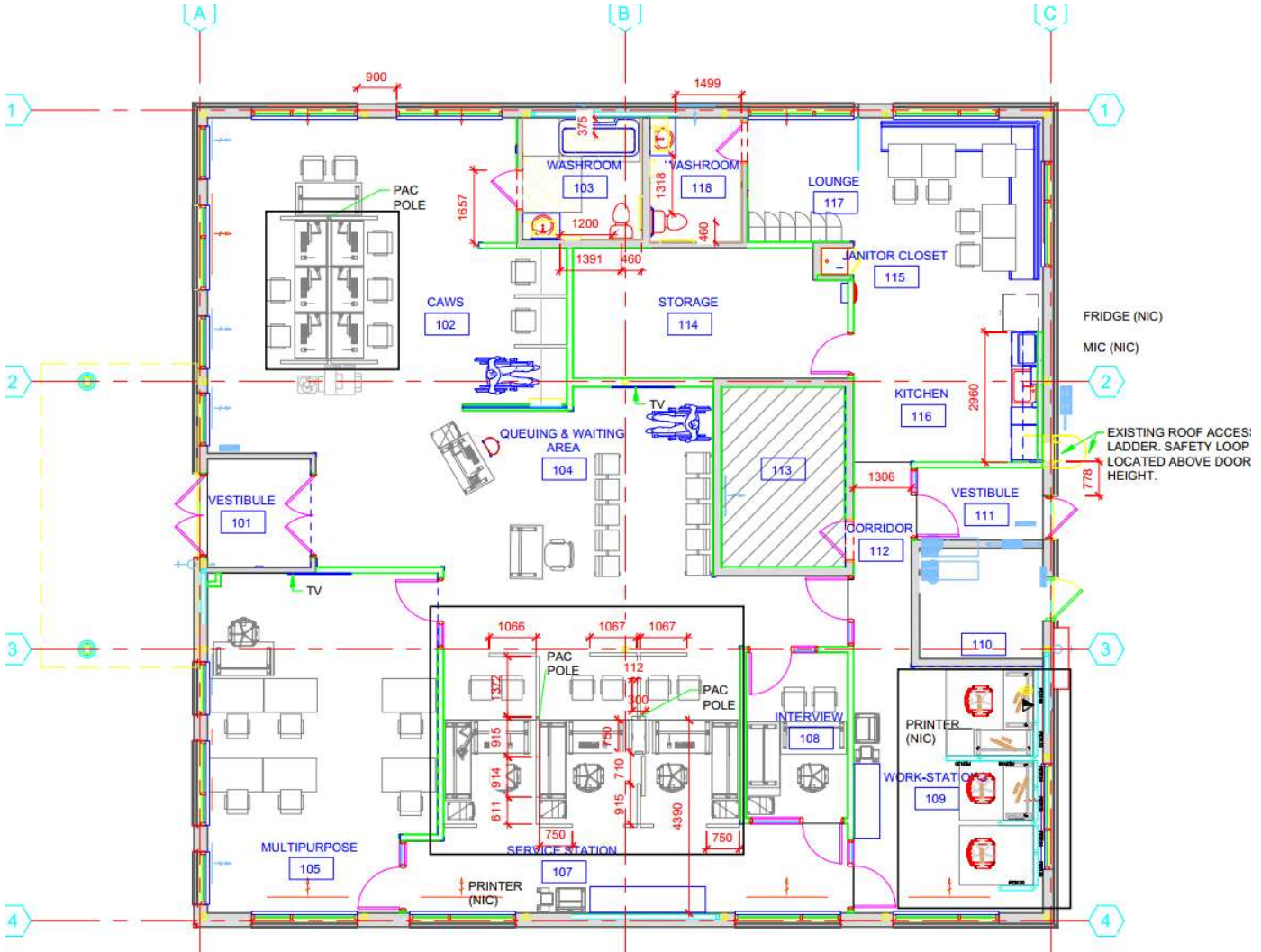
* Applicable taxes extra.

Table 6 – Bidder’s Authorized Representative

1.	Bidder’s Authorized Representative for the Bid and the Contract	
	Name:	Telephone:
		E-Mail:
		PBN:

ANNEX "A" - FLOORPLANS

FLOORPLAN #1:



FLOORPLAN #2:

CAWS AREA (102)								
Seated Privacy Height	Panel Length	Quantity	No Power	Below Surface Power	Above Surface Power	Lower Element	Upper Element	Comments:
	42"	7	0	7	0	Laminate	Fabric	*Data and electrical cut-out required on powered lower panel.
WORK-STATIONS (109)								
Seated Privacy Height	Panel Length	Quantity	No Power	Below Surface Power	Above Surface Power	Lower Element	Upper Element	Comments:
	30"	6	3	3	0	Fabric	Fabric	*Data and electrical cut-out required on powered lower panel.
	24"	2		2	0	Fabric	Fabric	*Data and electrical cut-out required on powered lower panel.
	48"	2		2		Fabric	Fabric	*Data and electrical cut-out required on powered lower panel.
SERVICE STATIONS (107)								
Standing Privacy Height	Panel Length	Quantity	No Power	Below Surface Power	Above Surface Power	Lower Element	Upper Element	Comments:
	42"	3	3			Laminate	NSA	Public side
	54"	2	2			Laminate	NSA	Public side
	30"	5	3	2		Fabric	NSA	Staff Side. *Data and electrical cut-out required on powered lower panel.
	36"	2	1	2		Fabric	NSA	Staff Side. *Data and electrical cut-out required on powered lower panel.
	24"	3	3			Laminate	None	Public Modesty
	24"	1	1			Fabric	NSA	Staff side
NON-SA ITEMS								