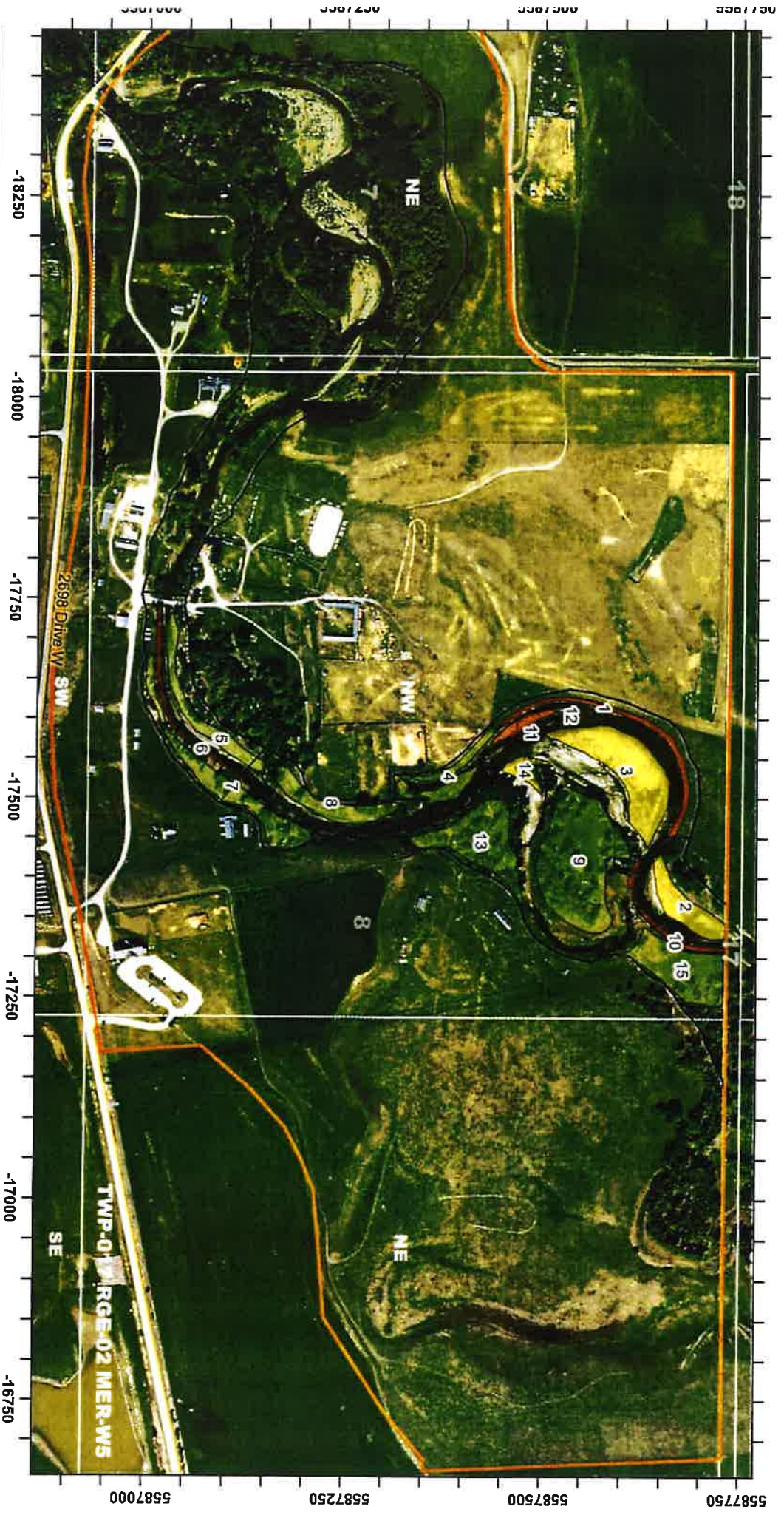


# Appendix A

## Figures



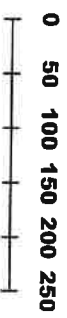
Exclude Polygons 1,2,3,10,15  
from scope. Exclude Rows 1  
and 3 from scope.

**Figure 2**

**Parks Canada  
BAR U Historic Site  
Restoration Plan**

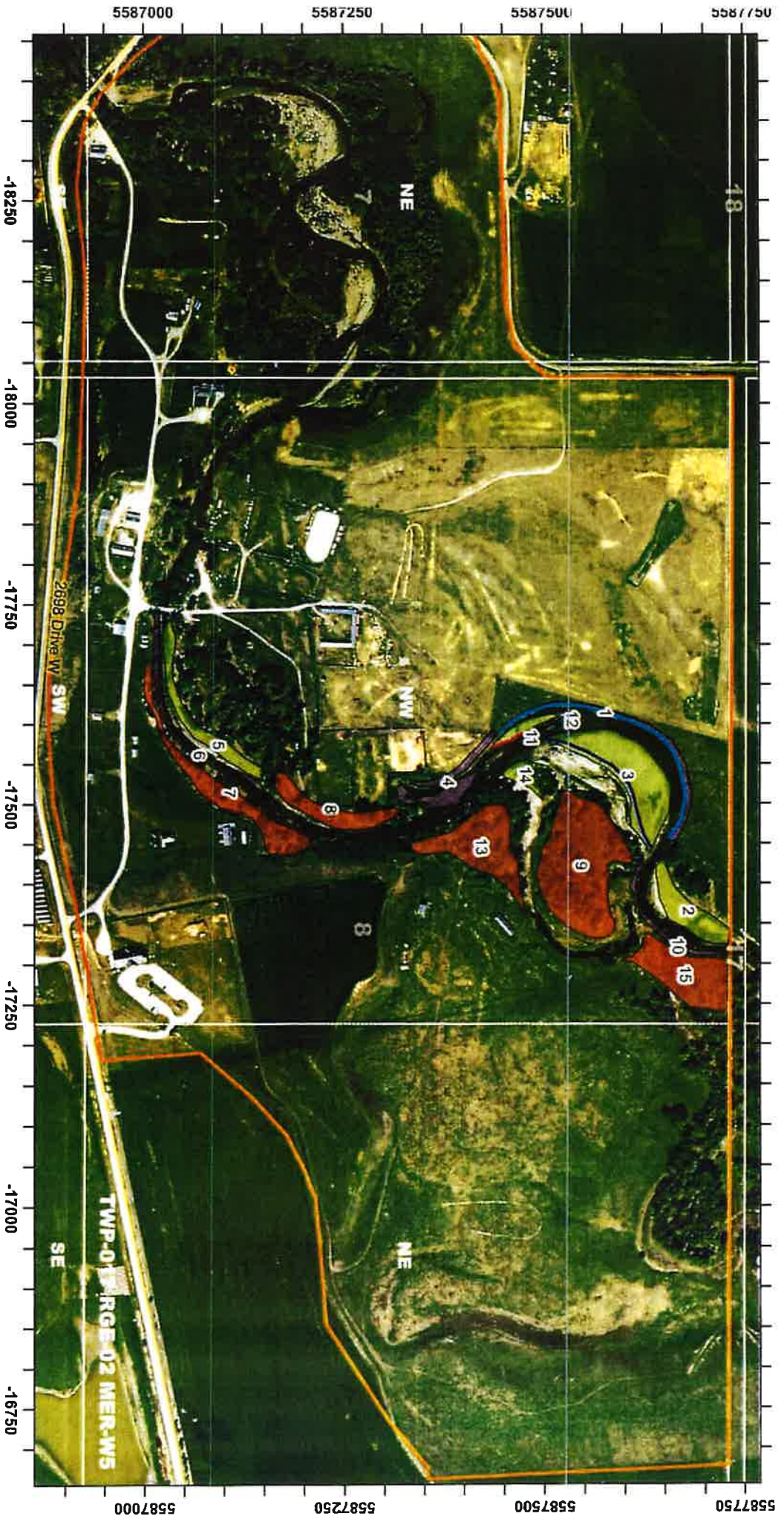
Riparian Restoration Plan:  
Priority of Restoration

Scale: 1: 7,000



ESRI World Imagery- Sources: Esri, DigitalGlobe, GeoEye, i-cubed, USDA FSA, USGS, AEX, Getmapping, Aerogrid, IGN, IGP, swisstopo, and the GIS User Community

Coordinate System: NAD83 / Albers 3TM ref merid 114 W



Exclude Polygons 1,2,3,10,15 from scope. Exclude Rows 1 and 3 from scope.

**Figure 3**

Parks Canada  
 BAR U Historic Site  
 Restoration Plan  
 Riparian Restoration Plan:  
 Restoration Activity

Scale: 1 : 7,000



ESRI World Imagery- Sources: Esri, DigitalGlobe, GeoEye, IGN, USDA FSA, USGS, AEX, Getmapping, Aerotrid, IGN, IGP, swisstopo, and the GIS User Community  
 Coordinate System: NAD83 / Alberta 3TM ref merid 114 W