






# Lethbridge Research Centre




## Irrigation Layout - Main Yard




**Pipeline Amenity Irrigation**

-  Manhole, Irrigation
-  Hydrant, Irrigation
-  Sprinkler, Irrigation; Sprinkler, Irrigation (Fixed)
-  Valve, Irrigation
-  Box, Irrigation

**Irrigation**

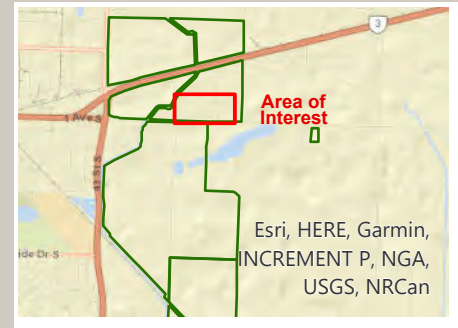
-  Pipeline, Irrigation



0510203040  
  
 Meters

**Sources:**  
 AAFC Assets Database  
 - Administrative Boundary  
 Progressive West Consulting  
 - Proposed Pathway and Offset  
 ESRI Basemaps  
 - Imagery  
 - Streets

**Disclaimer:**  
 User assumes all responsibility for use, interpretation, and application of information contained on this map.

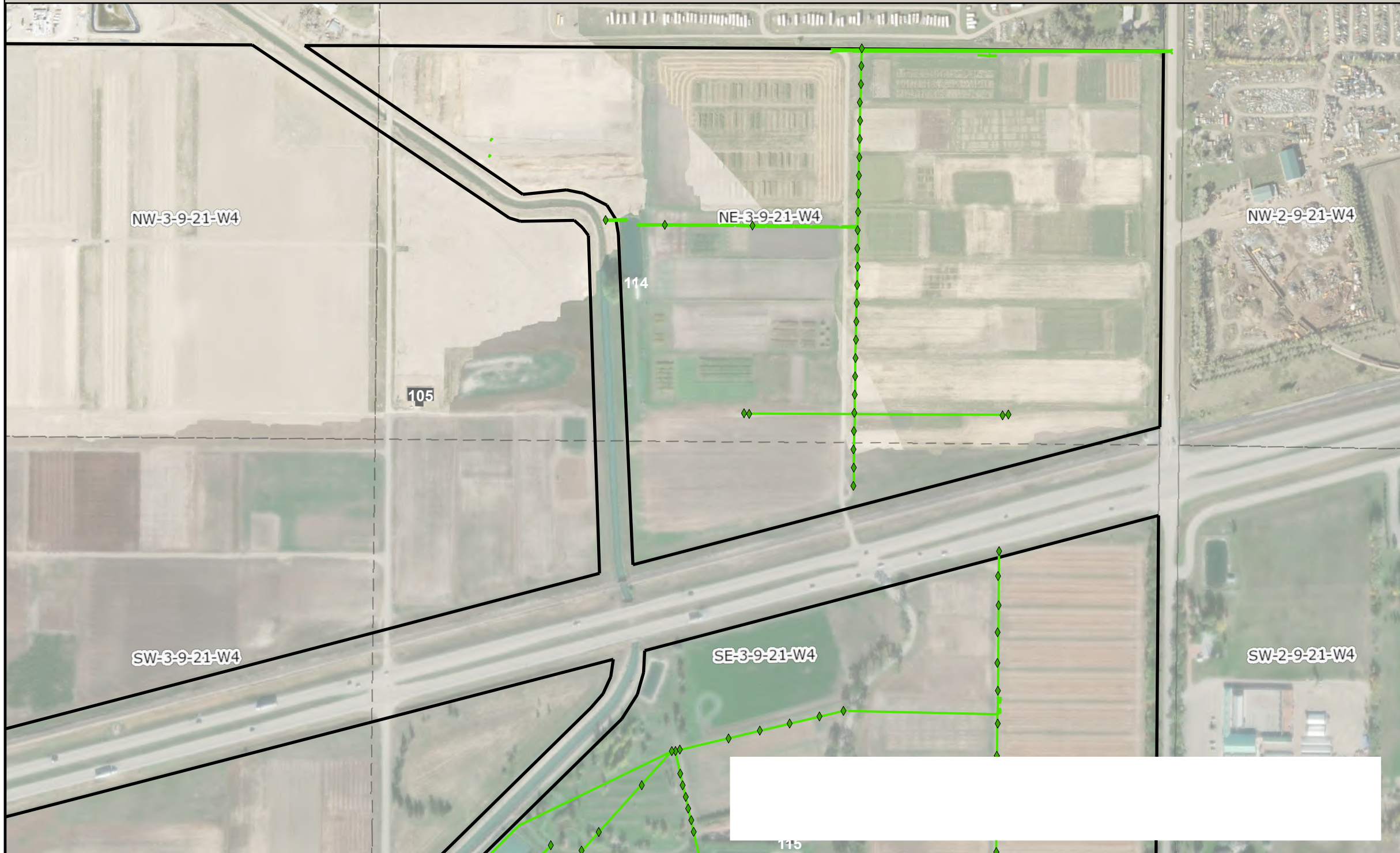









# Lethbridge Research Centre




## Irrigation Layout - North



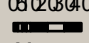
**Pipeline Amenity Irrigation**

-  Manhole, Irrigation
-  Hydrant, Irrigation
-  Sprinkler, Irrigation; Sprinkler, Irrigation (Fixed)
-  Valve, Irrigation
-  Box, Irrigation

**Irrigation**

-  Pipeline, Irrigation



  
 Meters

**Sources:**

- AAFC Assets Database
- Administrative Boundary

Progressive West Consulting

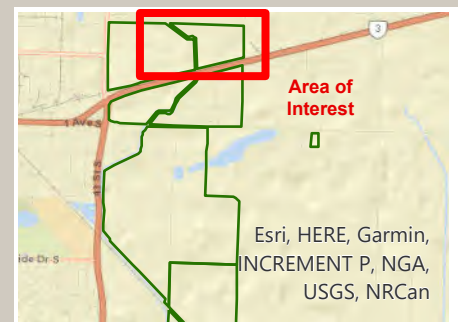
- Proposed Pathway and Offset

ESRI Basemaps

- Imagery
- Streets

**Disclaimer:**

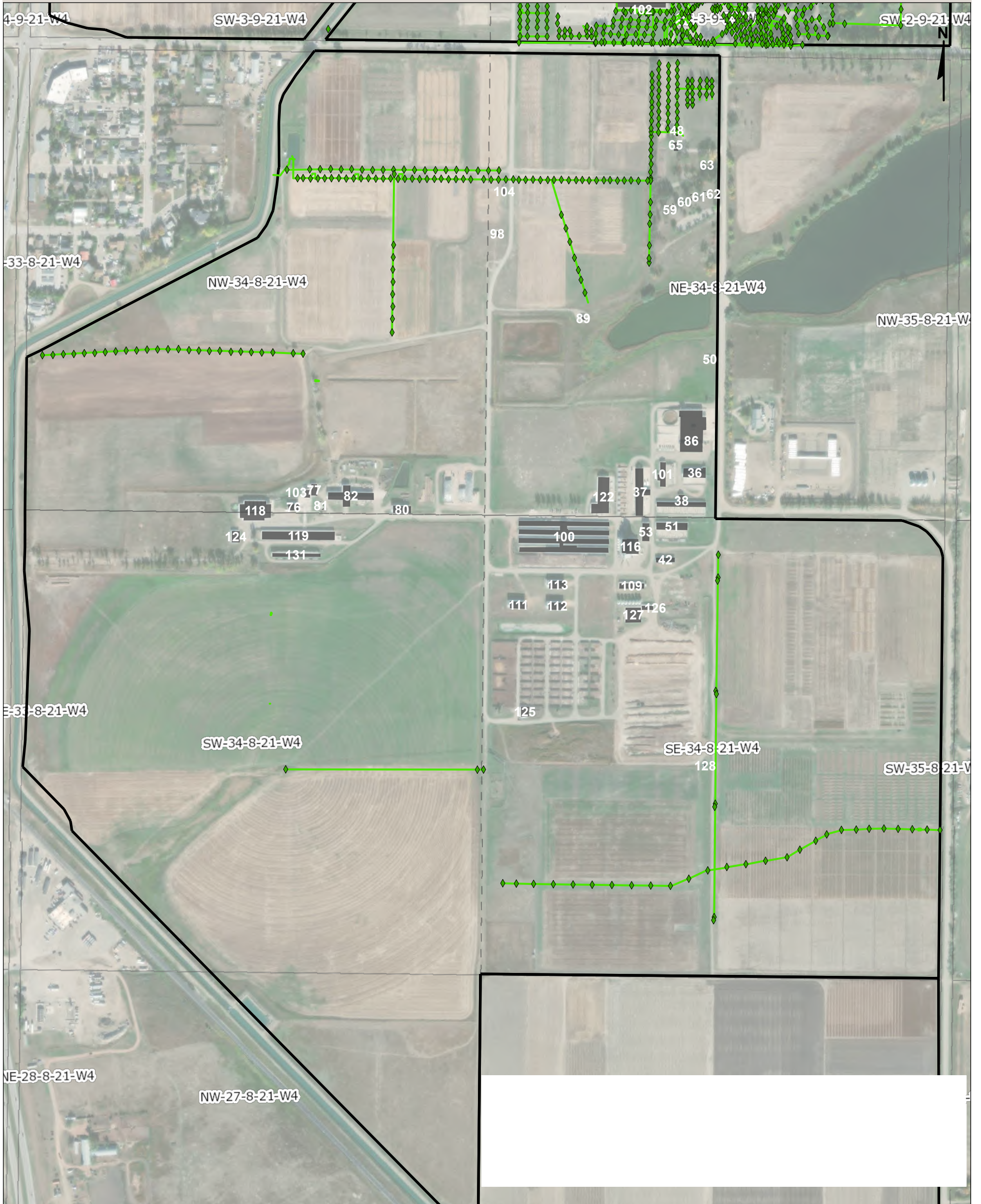
User assumes all responsibility for use, interpretation, and application of information contained on this map.







## Irrigation Layout - South



- Legend**
- Building
  - Demolished Building
  - Pipeline Amenity Irrigation**
  - Manhole, Irrigation
  - Hydrant, Irrigation
  - Sprinkler, Irrigation; Sprinkler, Irrigation (Fixed)
  - Valve, Irrigation
  - Box, Irrigation
  - Pipeline, Irrigation
  - Administrative Area

**Sources:**  
 AAFC Assets Database  
 - Land Parcels  
 - Administrative Boundaries  
 - Canada Land Parcels (Twp/Rge)  
 Note: Land Titles as of Jan. 2021

ESRI Basemaps  
 - Imagery  
 - Streets

**Disclaimer:**  
 User assumes all responsibility for use, interpretation, and application of information contained on this map.

