

ITEM	DESCRIPTION	QTY	REV	ISSY
1	MAIN RAKE	1	AD-1034-S	
2	TELESCOPIC BOOMS	2	AD-1036-S	
3	HOOK AND COUNTERWEIGHT	2	AD-772	
4	BOOM CARRIAGE COMPLETE	2	AD-582	
5	DRIVE WHEELS	2	AB-1313-S	
6	DRIVE SHAFT	1	101-1024-007/23-1007	
7	CONTROL VALVE	1	AC-5398-S	
8	CONTROL VALVE PRESSING	2	20-581-11	
9	CONTROL VALVE	1	SP-F4-H-P	
10	FRESHWATER STEEL WAVE	1	BRAND B-50	
11	WINDMILL	1	BRAND B-50	
12	WINDMILL HOUSING	1	FILE 19	
13	WINDMILL HOUSING	1	FILE 19	
14	WINDMILL HOUSING	1	FILE 19	
15	WINDMILL HOUSING	1	FILE 19	
16	WINDMILL HOUSING	1	FILE 19	
17	WINDMILL HOUSING	1	FILE 19	
18	WINDMILL HOUSING	1	FILE 19	
19	WINDMILL HOUSING	1	FILE 19	
20	WINDMILL HOUSING	1	FILE 19	
21	WINDMILL HOUSING	1	FILE 19	
22	WINDMILL HOUSING	1	FILE 19	
23	WINDMILL HOUSING	1	FILE 19	
24	WINDMILL HOUSING	1	FILE 19	
25	WINDMILL HOUSING	1	FILE 19	
26	WINDMILL HOUSING	1	FILE 19	
27	WINDMILL HOUSING	1	FILE 19	
28	WINDMILL HOUSING	1	FILE 19	
29	WINDMILL HOUSING	1	FILE 19	
30	WINDMILL HOUSING	1	FILE 19	
31	WINDMILL HOUSING	1	FILE 19	
32	WINDMILL HOUSING	1	FILE 19	
33	WINDMILL HOUSING	1	FILE 19	
34	WINDMILL HOUSING	1	FILE 19	
35	WINDMILL HOUSING	1	FILE 19	
36	WINDMILL HOUSING	1	FILE 19	
37	WINDMILL HOUSING	1	FILE 19	
38	WINDMILL HOUSING	1	FILE 19	
39	WINDMILL HOUSING	1	FILE 19	
40	WINDMILL HOUSING	1	FILE 19	
41	WINDMILL HOUSING	1	FILE 19	
42	WINDMILL HOUSING	1	FILE 19	
43	WINDMILL HOUSING	1	FILE 19	
44	WINDMILL HOUSING	1	FILE 19	
45	WINDMILL HOUSING	1	FILE 19	
46	WINDMILL HOUSING	1	FILE 19	
47	WINDMILL HOUSING	1	FILE 19	
48	WINDMILL HOUSING	1	FILE 19	
49	WINDMILL HOUSING	1	FILE 19	
50	WINDMILL HOUSING	1	FILE 19	
51	WINDMILL HOUSING	1	FILE 19	
52	WINDMILL HOUSING	1	FILE 19	
53	WINDMILL HOUSING	1	FILE 19	
54	WINDMILL HOUSING	1	FILE 19	
55	WINDMILL HOUSING	1	FILE 19	
56	WINDMILL HOUSING	1	FILE 19	
57	WINDMILL HOUSING	1	FILE 19	
58	WINDMILL HOUSING	1	FILE 19	
59	WINDMILL HOUSING	1	FILE 19	
60	WINDMILL HOUSING	1	FILE 19	
61	WINDMILL HOUSING	1	FILE 19	
62	WINDMILL HOUSING	1	FILE 19	
63	WINDMILL HOUSING	1	FILE 19	
64	WINDMILL HOUSING	1	FILE 19	
65	WINDMILL HOUSING	1	FILE 19	
66	WINDMILL HOUSING	1	FILE 19	
67	WINDMILL HOUSING	1	FILE 19	
68	WINDMILL HOUSING	1	FILE 19	
69	WINDMILL HOUSING	1	FILE 19	
70	WINDMILL HOUSING	1	FILE 19	
71	WINDMILL HOUSING	1	FILE 19	
72	WINDMILL HOUSING	1	FILE 19	
73	WINDMILL HOUSING	1	FILE 19	
74	WINDMILL HOUSING	1	FILE 19	
75	WINDMILL HOUSING	1	FILE 19	
76	WINDMILL HOUSING	1	FILE 19	
77	WINDMILL HOUSING	1	FILE 19	
78	WINDMILL HOUSING	1	FILE 19	
79	WINDMILL HOUSING	1	FILE 19	
80	WINDMILL HOUSING	1	FILE 19	
81	WINDMILL HOUSING	1	FILE 19	
82	WINDMILL HOUSING	1	FILE 19	
83	WINDMILL HOUSING	1	FILE 19	
84	WINDMILL HOUSING	1	FILE 19	
85	WINDMILL HOUSING	1	FILE 19	
86	WINDMILL HOUSING	1	FILE 19	
87	WINDMILL HOUSING	1	FILE 19	
88	WINDMILL HOUSING	1	FILE 19	
89	WINDMILL HOUSING	1	FILE 19	
90	WINDMILL HOUSING	1	FILE 19	
91	WINDMILL HOUSING	1	FILE 19	
92	WINDMILL HOUSING	1	FILE 19	
93	WINDMILL HOUSING	1	FILE 19	
94	WINDMILL HOUSING	1	FILE 19	
95	WINDMILL HOUSING	1	FILE 19	
96	WINDMILL HOUSING	1	FILE 19	
97	WINDMILL HOUSING	1	FILE 19	
98	WINDMILL HOUSING	1	FILE 19	
99	WINDMILL HOUSING	1	FILE 19	
100	WINDMILL HOUSING	1	FILE 19	

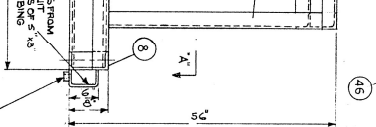
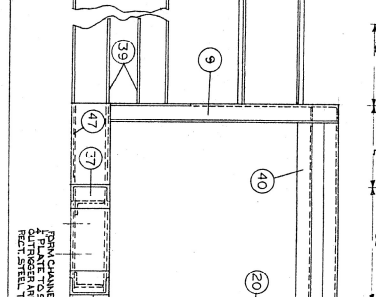
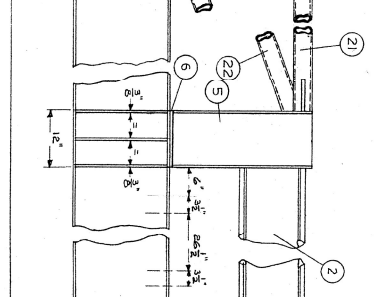
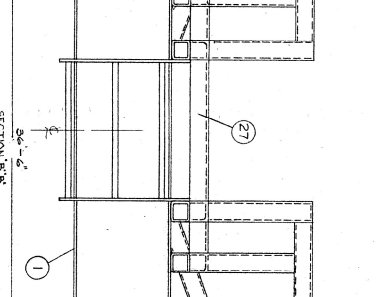
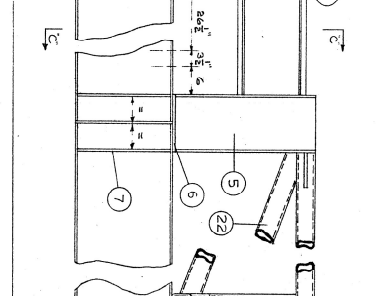
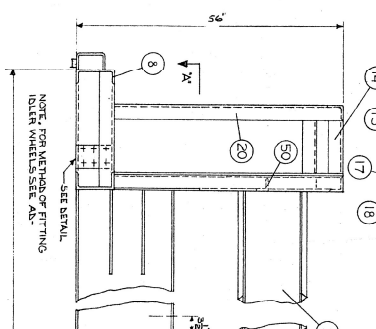
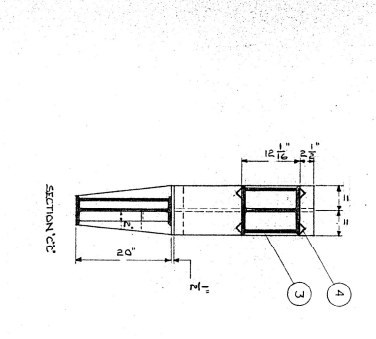
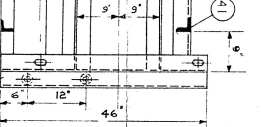
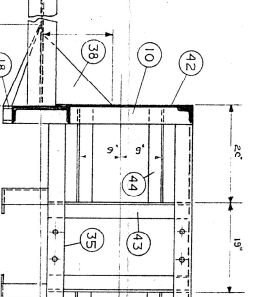
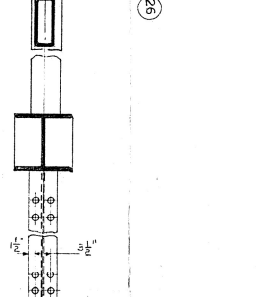
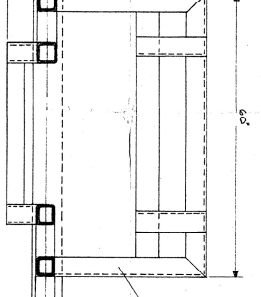
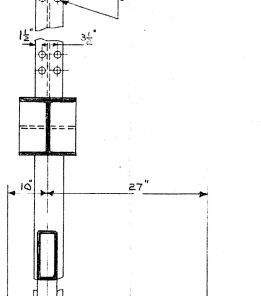
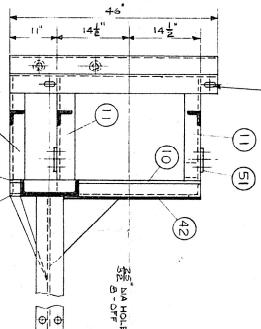
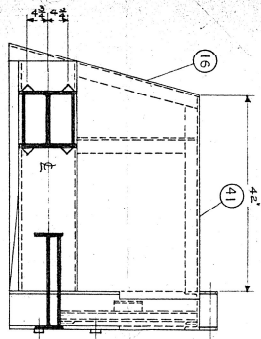
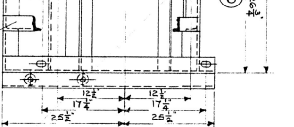
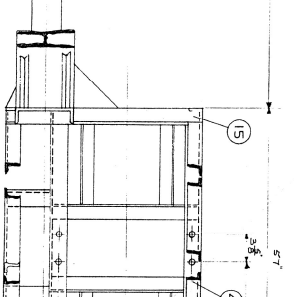
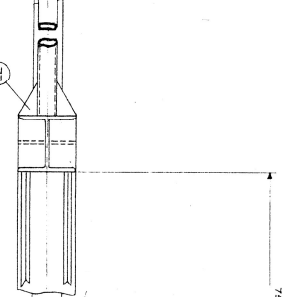
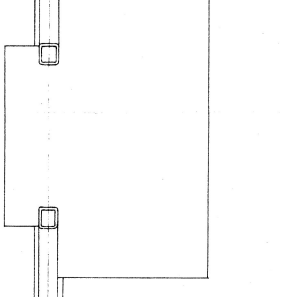
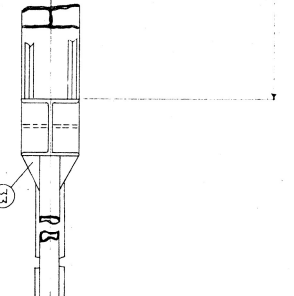
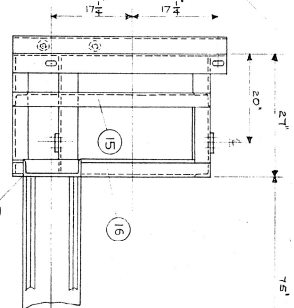
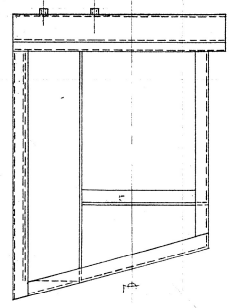
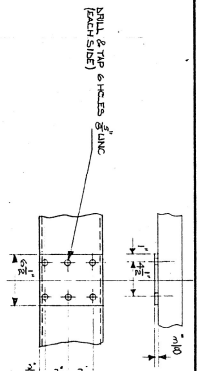
NOTE: FOR DIAGRAM OF HYDRAULIC CONNECTIONS, SEE AC-748-S.

TRENT-SEVERN WATERWAYS  
CONTROL DAM STOP LOG LIFTER  
SERIAL NUMBER 7748 / 1/2 / 3/4 / 5/8

**ATLAS**  
**POLAR**  
COMPANY LIMITED

OCT 1981

AD-1035-S



CONTROL DAM STOP LOG/LIFTER  
 DETAIL OF MAIN MEMBER  
 FROM AND SECTION MAIN MEMBERS

ATLAS  
 POLAR  
 COMPANY, INC.

AD-1034S

NOTE: ① FOR COMPLETE CUTTING LIST SEE AB-  
 ② TOTAL WEIGHT 8900 LBS.

7% BRASS LINER  
 4" DIA. TUBING  
 4" DIA. TUBING  
 4" DIA. TUBING

PERM CHANNELS FROM  
 MAIN DAM AND 5" x 5"  
 RECT. STEEL TUBING

NOTE: FOR METHOD OF FITTING  
 IDLER WHEELS SEE AB-

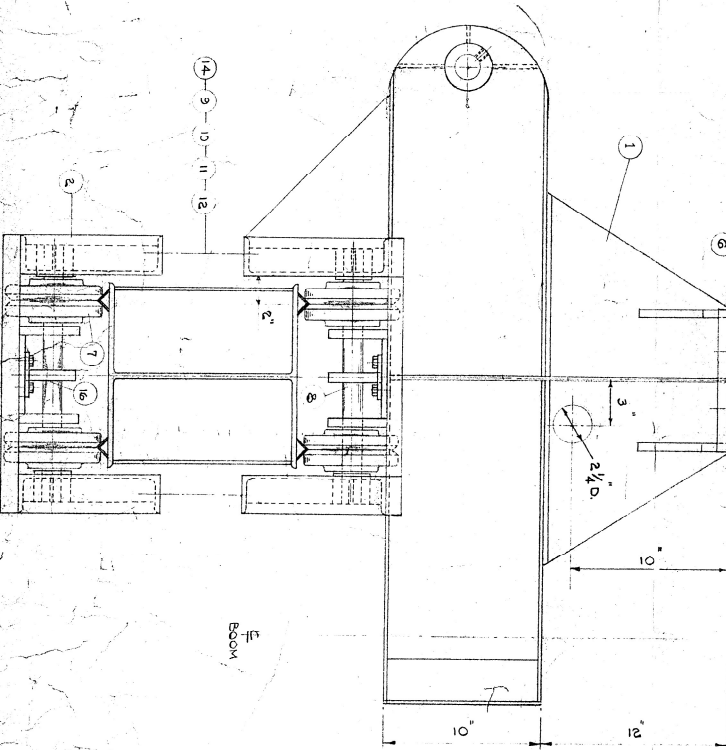
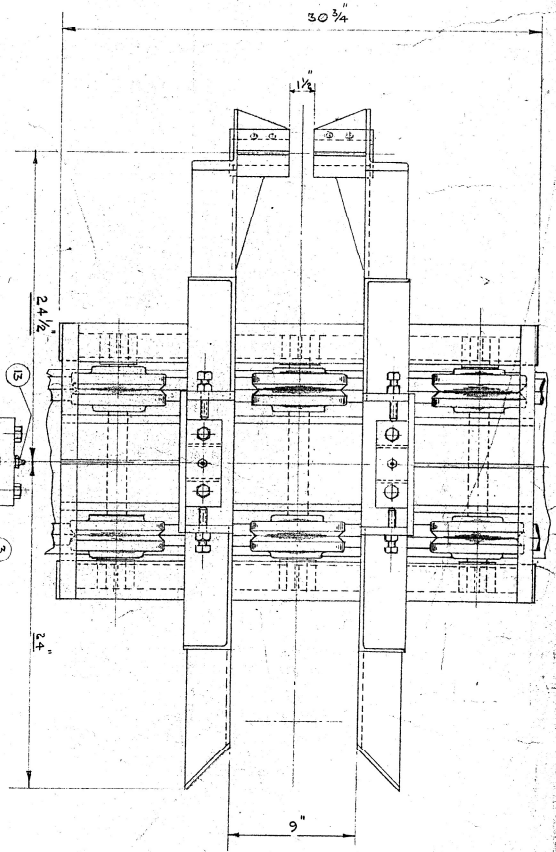
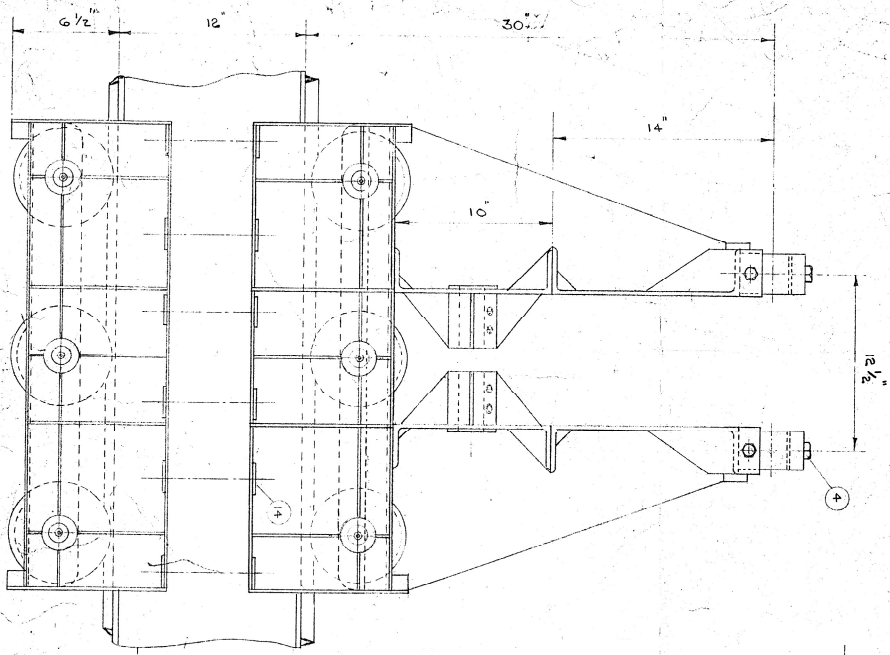
HOLES FOR WHEEL AXLE  
 BEARINGS 1/2"

NOTE: CUT CERAMIC PORHYDRALIC  
 PRESSURE POSITION TO BE DETERMINED  
 AT CONSTRUCTION

1/2" DIA HOLES FOR HOLD DOWN PINS  
 2 HOLES PER 15" TO 24" SPAN

SEE 3/8" DIA HOLES  
 3" OFF

7% BRASS LINER  
 4" DIA. TUBING  
 4" DIA. TUBING



ITEM NO.	DESCRIPTION	QTY	REMARKS
1	TOP HALF BOOM CARRIAGE	1	AD-554
2	BOTTOM HALF BOOM CARRIAGE	1	AD-554
3	BEARINGS SMF 205532	4	18-384-1000-1000-1000-1000
4	BOLTS H.T. 3/4" UNC x 5 1/2" Lg. 9-3	4	AD-552
5	SET SCREWS 3/4" UNC x 5" Lg.	4	"
6	NUTS 3/4" UNC	4	"
7	GROOVED WHEELS	2	AD-550
8	1 1/2" DIA. SHAFT	1	AD-305
9	THROD ROD 7/8" UNC x 10" Lg.	1	AD-745
10	NUTS STD. 7/8" UNC	2	AD-552
11	NUTS TAPER. 7/8" UNC	2	"
12	WASHER 7/8" FLAT	2	"
13	STRAIGHT GREASE NIPPLE	2	"
14	TAPER WASHER 7/8" BORE	2	"
15	THRUST WASHER 1 1/2" BORE	2	"
16	LOOKING BAR FOR SHAFT	2	"
17	ACTUATING BRACKET	1	AD-558

3 DIM. 2 1/2" WAS 23"  
 2 IMPROVED TO BECOME STD UNIT  
 ISSUE: revision  
 DIM. STOP LOG LIFTER  
 BOOM CARRIAGE 2-OFF PER UNIT  
 ARRANGEMENT & PARTS LIST  
 PART NO.